

Week Ending 01st June 2012

The ASX seems to have attained some directionality about it with some interesting new possibilities looking good for the coming weeks. A number of new opportunities have presented themselves for the coming week.

Of the 14 open positions, 7 have moved enough that the Trailing Stops are between the current price and the entry and are acting as profit traps, most of the other stops have moved towards the entry prices and thus are reducing the open risk in the transactions.

Have a great week all

Australian Stock Exchange: - Currency – AUD\$

Entries:

Exits:

The colour coding we are currently using is as follows:

Amended orders or stops

Retained Orders or stops – no change

New working orders

Immediate action required

Short Sell

Open Positions

Stops:	Old	Action	New
--------	-----	--------	-----

Amended

Alumina	AWC	1.071	Amend	1.017
Ampella Mining	AMX	0.971	Amend	0.915
Aquarius Platinum	AQP	1948	Amend	1.698
Aquila Resources	AQA	4.487	Amend	3.817
BHP Billiton Ltd	BHP	34.57	Amend	34.23
Fairfax Media	FXJ	0.70	Amend	0.693
Mount Gibson Iron	MGX	1.087	Amend	1.007

Paladin Energy	PDN	1.416	Amend	1.38
----------------	-----	-------	-------	------

Retained

Aditya Birla	ABY	0.623	Retain	0.623
Australia Infrastructure	AIX	2.128	Retain	2.128
Leighton Holdings	LEI	19.53	Retain	19.53
OZ Minerals Ltd	OZL	8.864	Retain	8.864
Ramsay Health Care	RHC	19.93	Amend	19.93
Telecom Corp of N.Z.	TEL	1.885	Retain	1.885

Cancelled Orders

APA Group

Working Orders

Commodity	Code	Direction	Entry	Stop
-----------	------	-----------	-------	------

Amended

Qantas Airways	QAN	Sell	1.391	1.489
----------------	-----	------	-------	-------

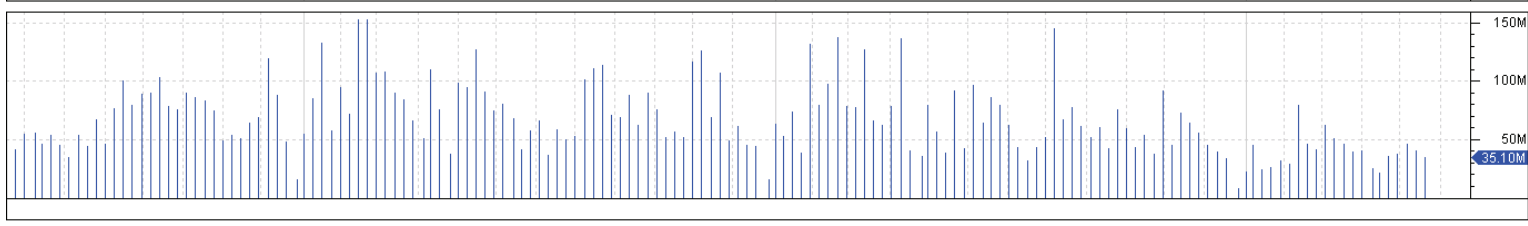
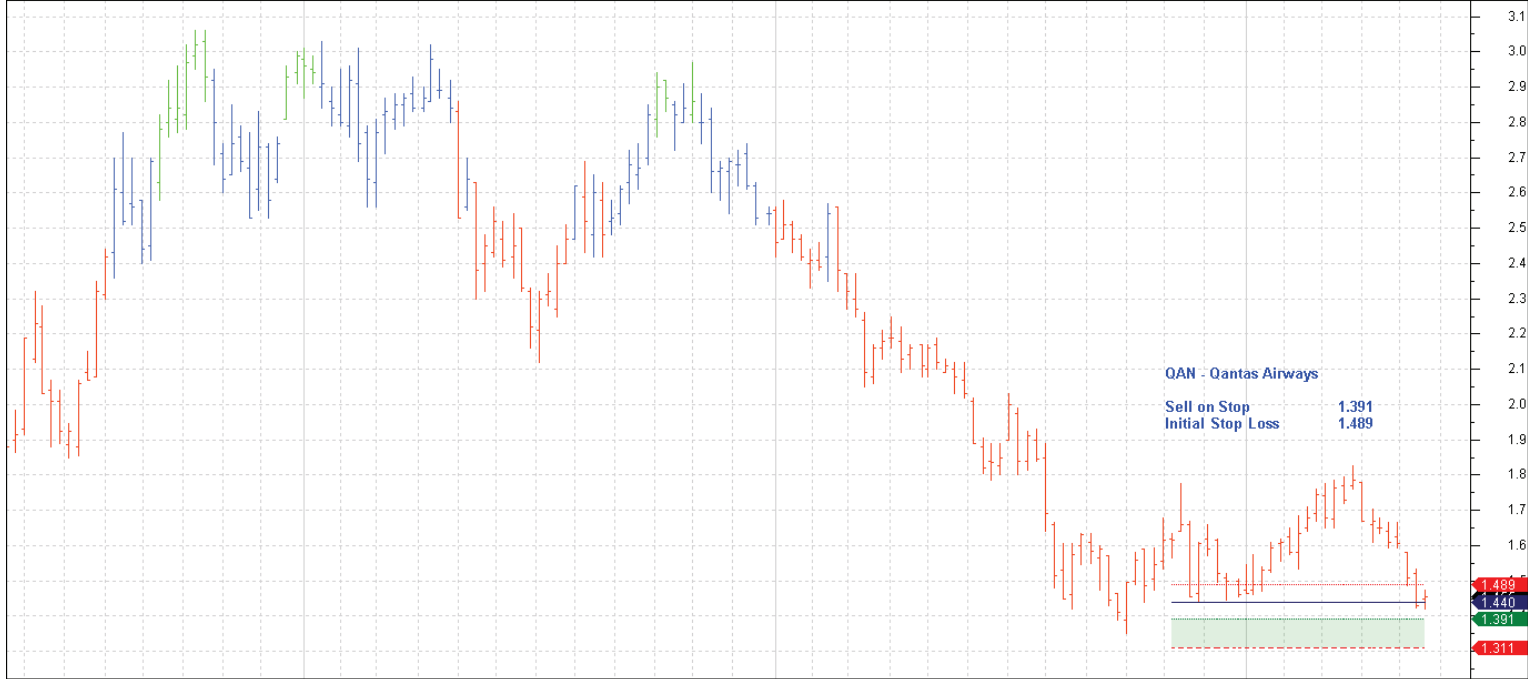
Retained

New

Sonic Health Care	SHL	Buy	13.00	12.52
Seven West Media	SWM	Sell	2.208	2.772
TPG Telecom Ltd	TPM	Sell	1.665	1.773

Charts

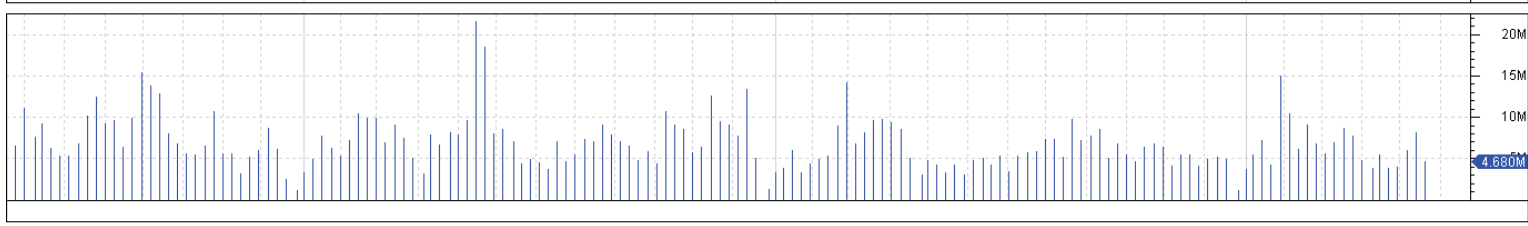
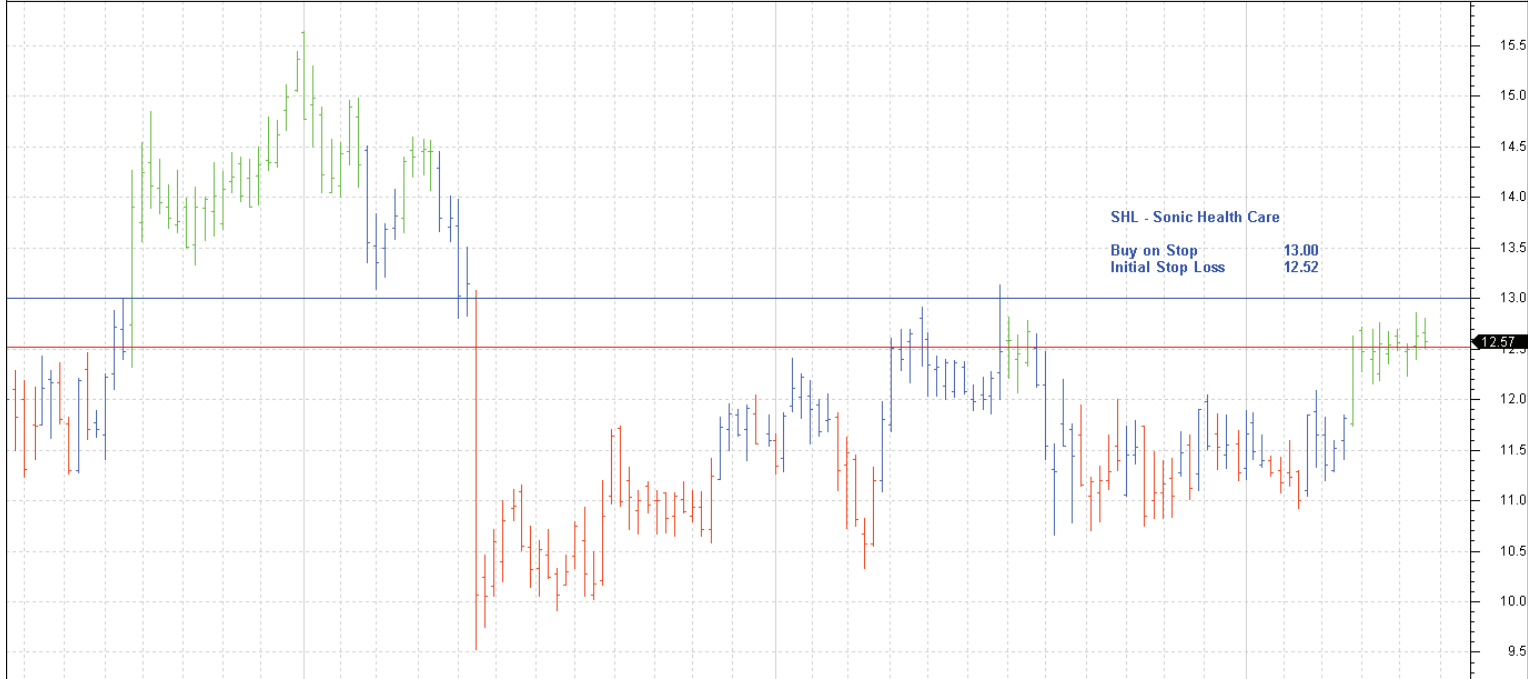
QAN Weekly CI=1.45500 O=1.45000 H=1.47500 L=1.42000 +0.02500 +1.75% QAN Weekly LW-DIPC(1.5,5,34) QAN Weekly LW-MCS(31-10-2011,1.44,5,C,C) Ma=1.31100 Mi=1.39100 S=1.44000 I=1.48900 25-05-2012



y Jun Jul Aug Sep Oct Nov Dec Jan Feb Mar Apr May Jun 2009 2010 2011 2012

@ BullSystems www.bullsystems.com

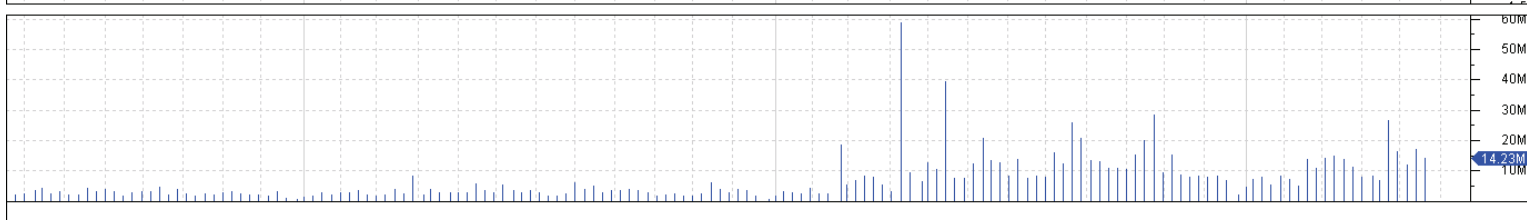
SHL Weekly CI=12.57000 O=12.66000 H=12.80000 L=12.51000 -0.06000 -0.48% SHL Weekly LW-DIPC(1.5,5,34) 25-05-2012



y Jun Jul Aug Sep Oct Nov Dec Jan Feb Mar Apr May Jun 2009 2010 2011 2012

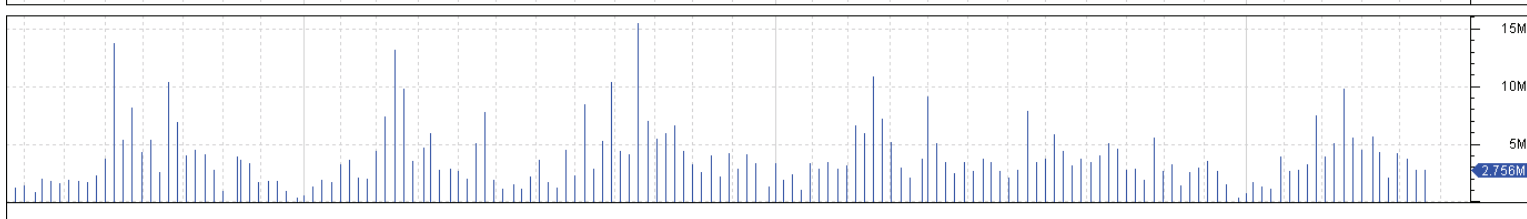
@ BullSystems www.bullsystems.com

SWM Weekly CI=2.49000 O=2.56000 H=2.61000 L=2.47000 -0.07000 -2.73% SWM Weekly LW-DIPC(1.5,5,34) SWM Weekly LW-MCS(25-07-2011,2.49,5,C,C) Ma=1.87100 Mi=2.20800 S=2.49000 I=2.77200 25-05-2012



y Jun Jul Aug Sep Oct Nov Dec Jan Feb Mar Apr May Jun Jul Aug Sep Oct Nov Dec Jan Feb Mar Apr May Jun
2009 2010 2011 2012
© BullSystems www.bullsystems.com

TPM Weekly CI=1.73000 O=1.72500 H=1.82500 L=1.67000 -0.02000 -1.14% TPM Weekly LW-DIPC(1.5,5,34) TPM Weekly LW-MCS(26-03-2012,1.719,5,C,C) Ma=1.55500 Mi=1.66500 S=1.71900 I=1.77300 25-05-2012



y Jun Jul Aug Sep Oct Nov Dec Jan Feb Mar Apr May Jun Jul Aug Sep Oct Nov Dec Jan Feb Mar Apr May Jun
2009 2010 2011 2012
© BullSystems www.bullsystems.com