



Fairfax Media	FXJ	0.693	Retain	0.693
Leighton Holdings	LEI	19.53	Retain	19.53
Mount Gibson Iron	MGX	1.007	Retain	1.007
OZ Minerals Ltd	OZL	8.864	Retain	8.864
Paladin Energy	PDN	1.38	Retain	1.38
Ramsay Health Care	RHC	19.93	Retain	19.93

## Cancelled Orders

Sonic Health Care

## Working Orders

Commodity	Code	Direction	Entry	Stop
-----------	------	-----------	-------	------

## Amended

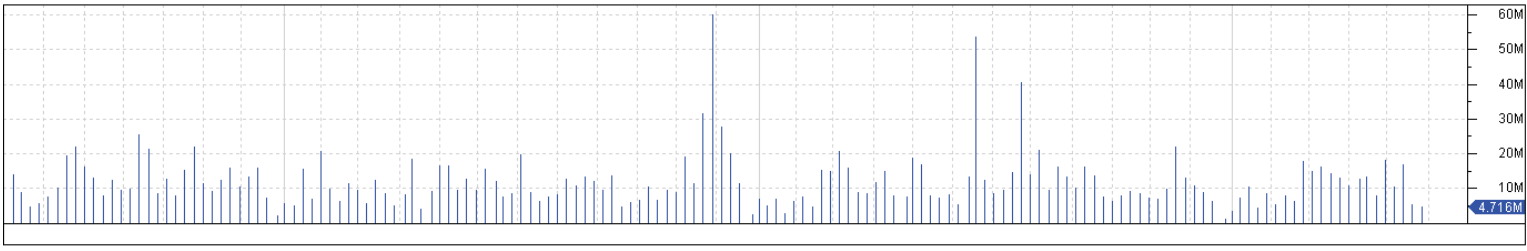
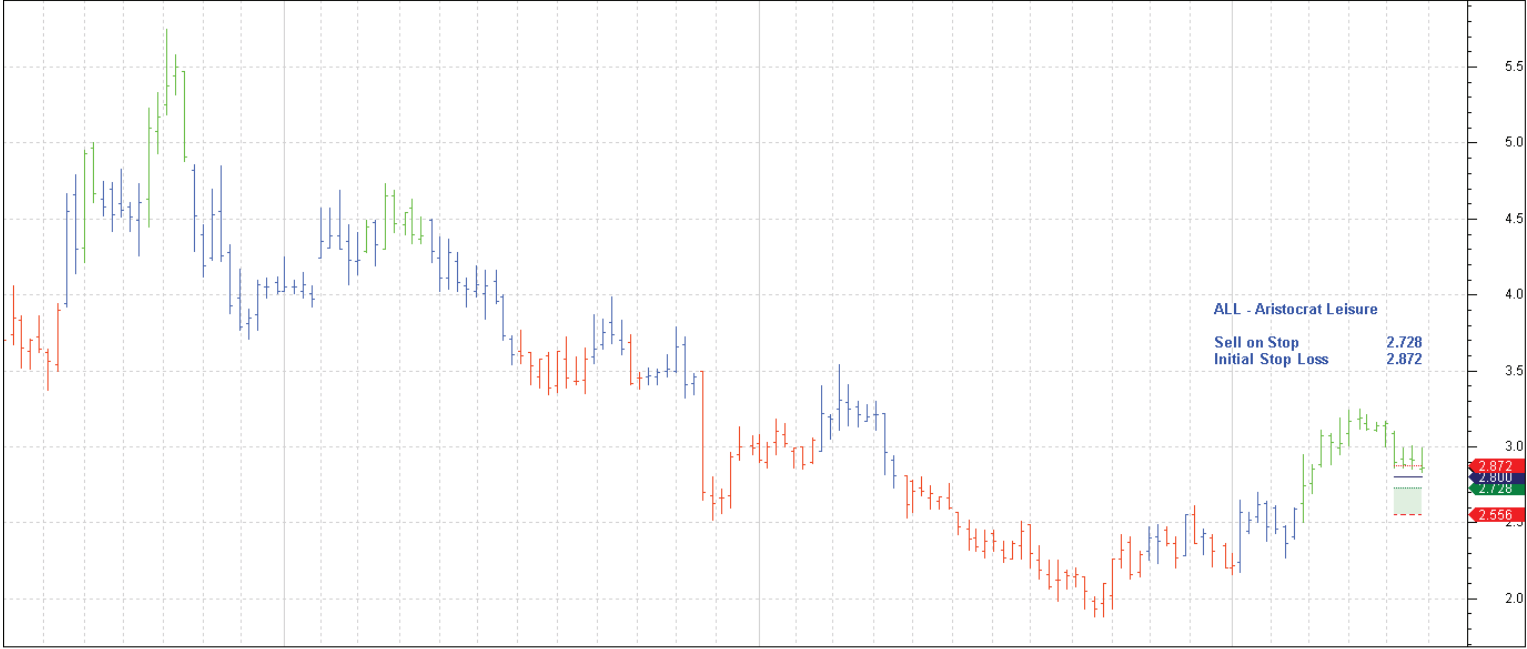
Qantas Airways	QAN	Sell	1.397	1.483
Seven West Media	SWM	Sell	2.237	2.61
TPG Telecom Ltd	TPM	Sell	1.662	1.776

## Retained

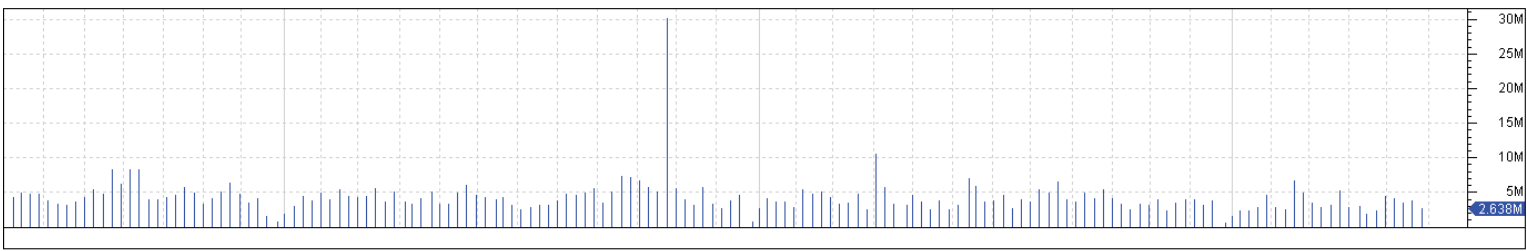
## New

Aristocrat Leisure	ALL	Sell	2.728	2.872
ASX Limited	ASX	Sell	28.36	29.64
CSL Limited	CSL	Buy	38.74	37.20
Energy World Corp	EWC	Sell	0.369	0.451
Fleetwood Corp	FWD	Sell	11.31	11.95
Oceanagold Corp	OGC	Sell	1.685	1.889
QBE Insurance	QBE	Sell	11.85	12.41
SAI Global	SAI	Sell	4.473	4.727

## Charts

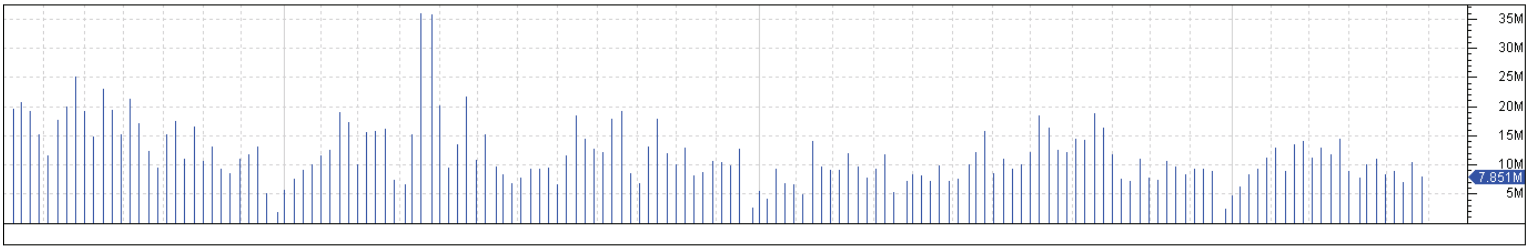
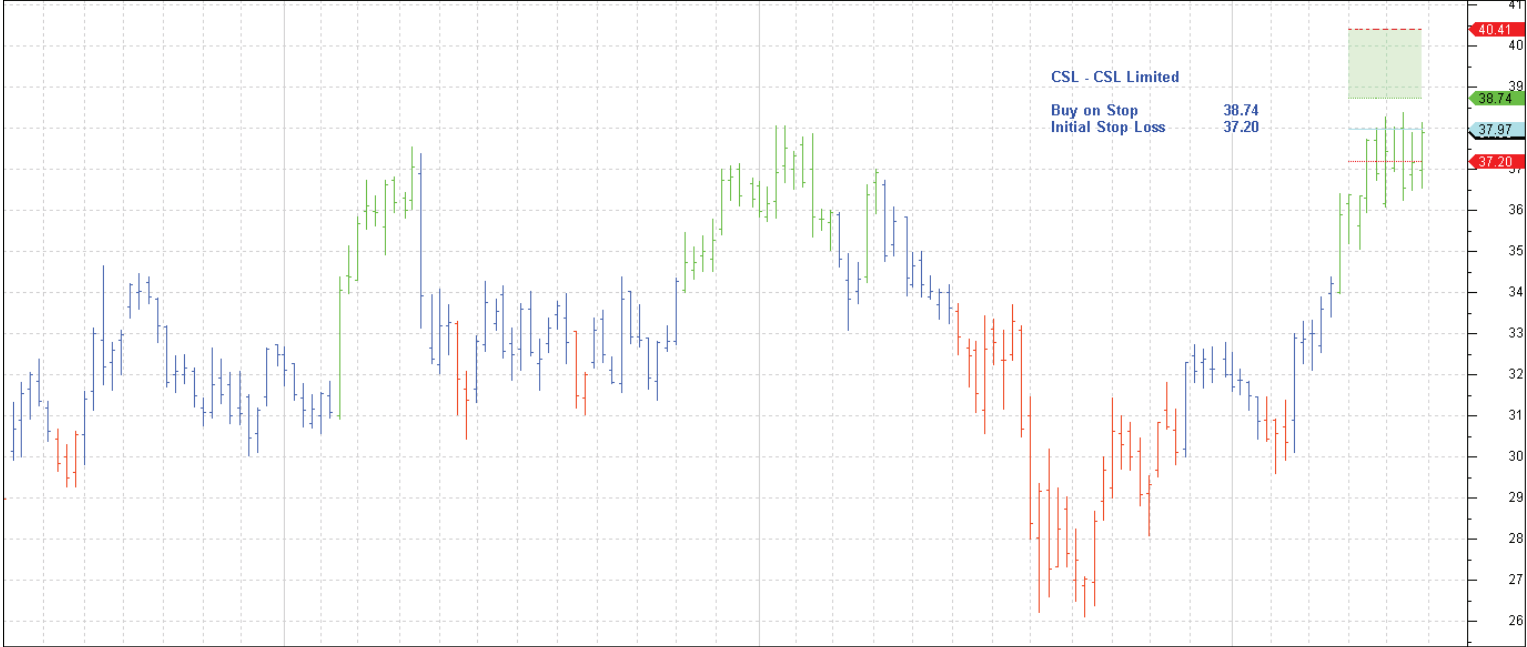


Jun 2009	Jul	Aug	Sep	Oct	Nov	Dec	Jan 2010	Feb	Mar	Apr	May	Jun	Jul	Aug	Sep	Oct	Nov	Dec	Jan 2011	Feb	Mar	Apr	May	Jun	Jul	Aug	Sep	Oct	Nov	Dec	Jan 2012	Feb	Mar	Apr	May	Jun
----------	-----	-----	-----	-----	-----	-----	----------	-----	-----	-----	-----	-----	-----	-----	-----	-----	-----	-----	----------	-----	-----	-----	-----	-----	-----	-----	-----	-----	-----	-----	----------	-----	-----	-----	-----	-----



Jun 2009	Jul	Aug	Sep	Oct	Nov	Dec	Jan 2010	Feb	Mar	Apr	May	Jun	Jul	Aug	Sep	Oct	Nov	Dec	Jan 2011	Feb	Mar	Apr	May	Jun	Jul	Aug	Sep	Oct	Nov	Dec	Jan 2012	Feb	Mar	Apr	May	Jun
----------	-----	-----	-----	-----	-----	-----	----------	-----	-----	-----	-----	-----	-----	-----	-----	-----	-----	-----	----------	-----	-----	-----	-----	-----	-----	-----	-----	-----	-----	-----	----------	-----	-----	-----	-----	-----

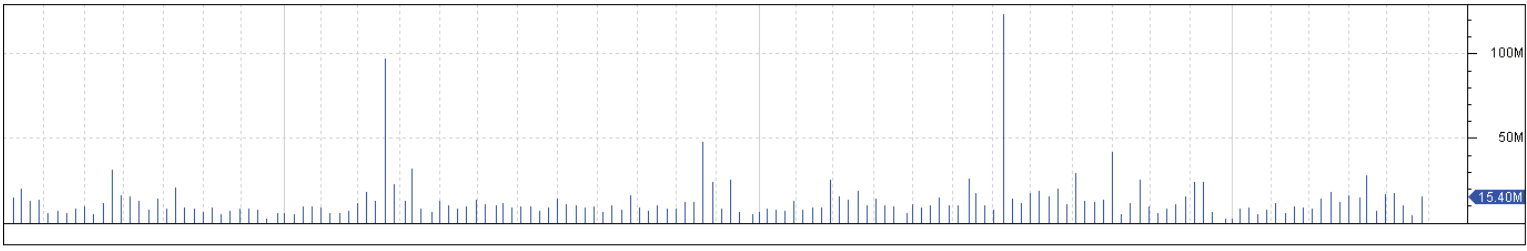
CSL Weekly CI=37.8900 O=36.9900 H=38.1500 L=36.5500 +0.7100 +1.91% CSL Weekly LW-DIPC(1.5,5,34) CSL Weekly LW-MCL(26-03-2012,37.97,5,C,C) Ma=40.4140 Mi=38.73600 I=37.204 01-06-2012



Jun 2009 Jul Aug Sep Oct Nov Dec 2010 Jan Feb Mar Apr May Jun Jul Aug Sep Oct Nov Dec 2011 Jan Feb Mar Apr May Jun Jul Aug Sep Oct Nov Dec 2012

© BullSystems www.bullsystems.com

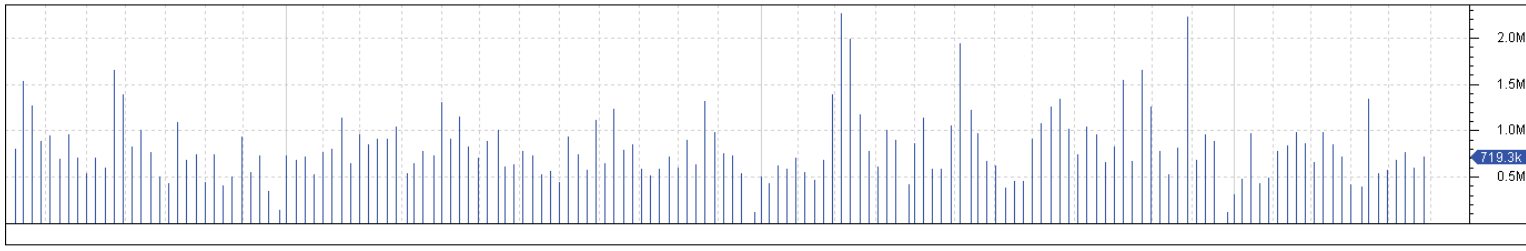
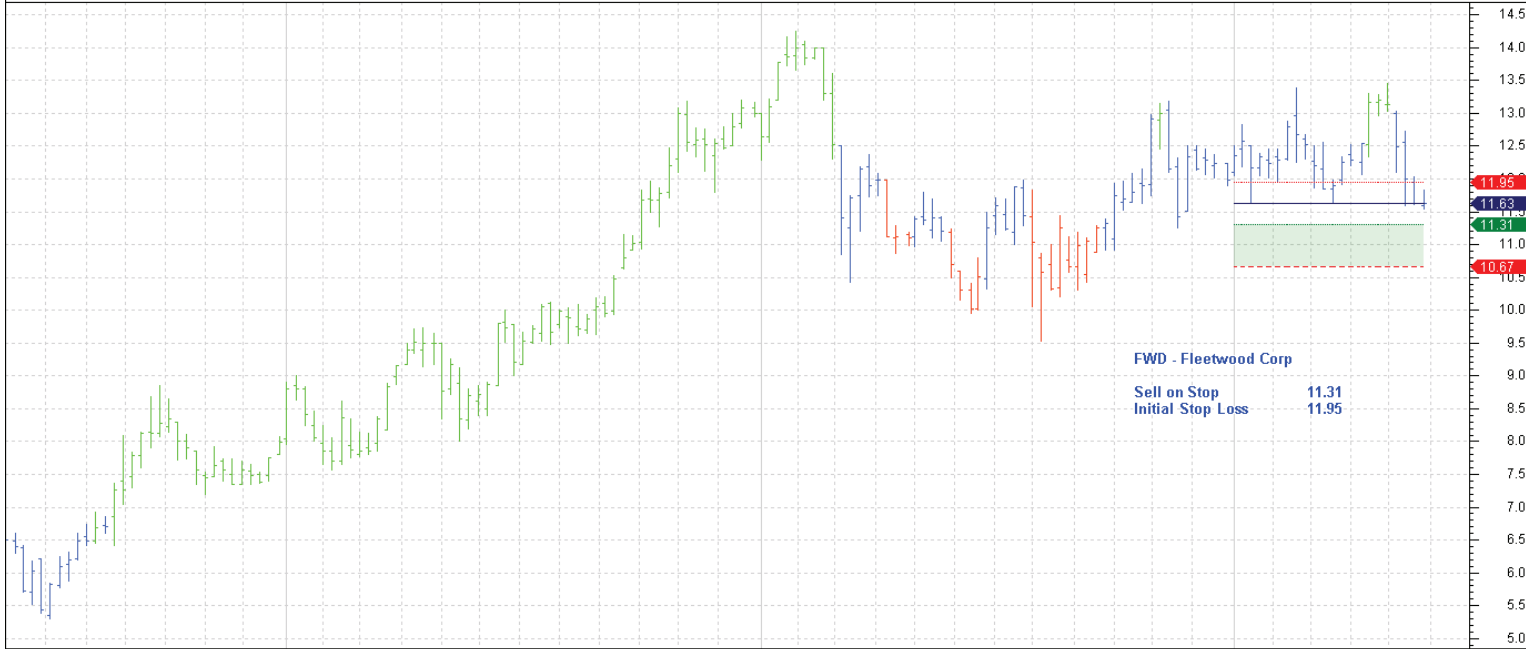
EWC Weekly CI=0.39000 O=0.43000 H=0.43500 L=0.38000 -0.03000 -7.14% EWC Weekly LW-DIPC(1.5,5,34) EWC Weekly LW-MCS(30-04-2012,0.41,5,C,C) Ma=0.29100 Mi=0.36900 S=0.41000 I=0.45100 01-06-2012



Jun 2009 Jul Aug Sep Oct Nov Dec 2010 Jan Feb Mar Apr May Jun Jul Aug Sep Oct Nov Dec 2011 Jan Feb Mar Apr May Jun Jul Aug Sep Oct Nov Dec 2012

© BullSystems www.bullsystems.com

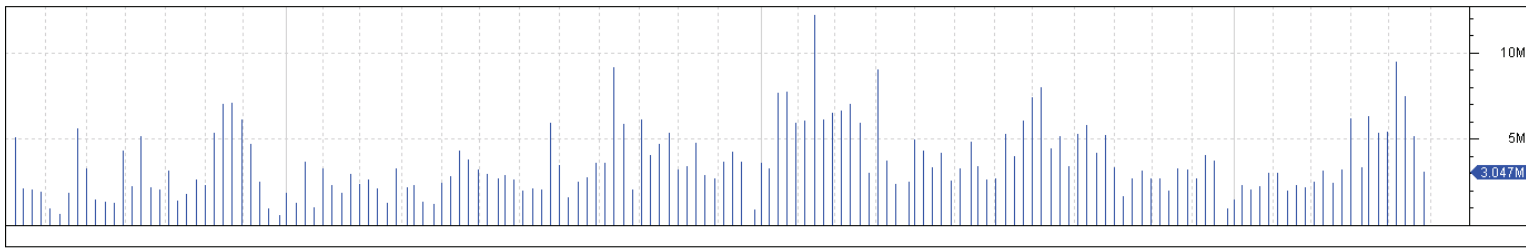
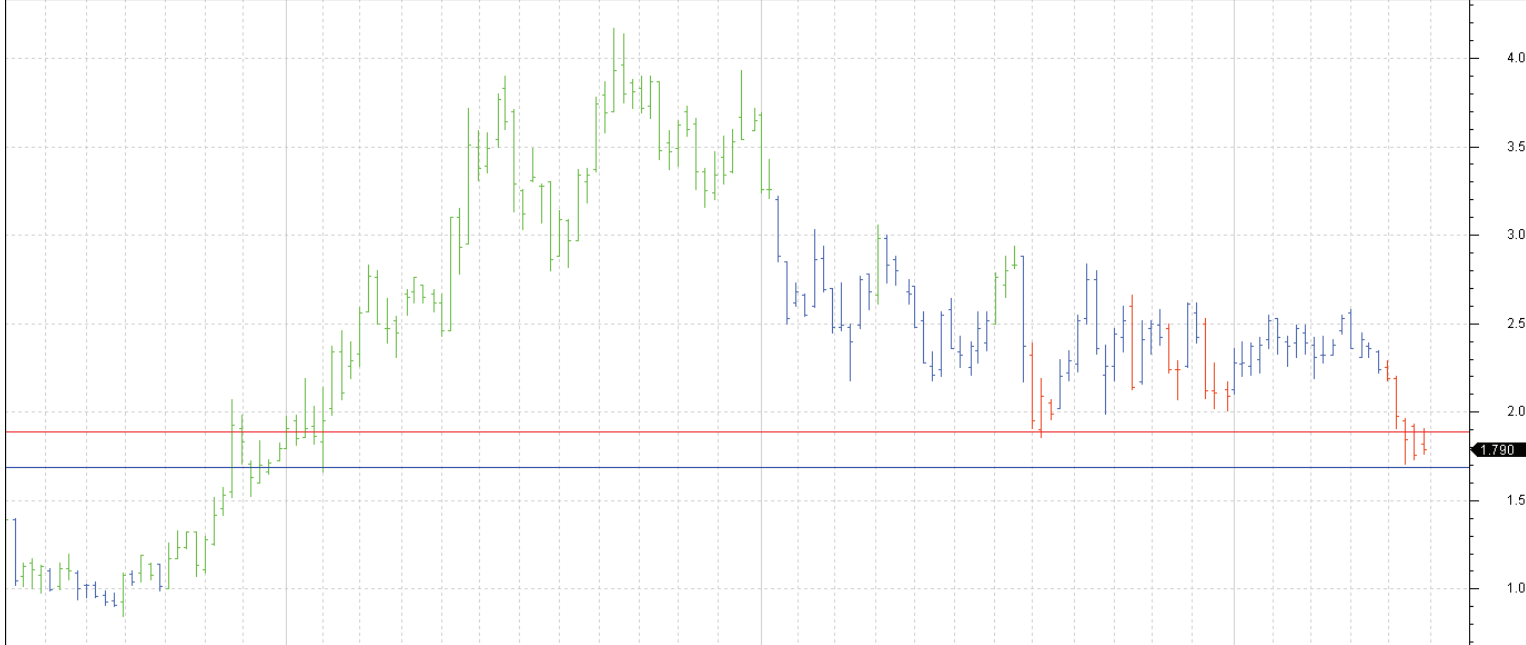
FWD Weekly CI=11.63000 O=11.60000 H=11.83000 L=11.55000 +0.01000 +0.09% FWD Weekly LW-DIPC(1.5,5,34) FWD Weekly LW-MCS(26-12-2011,11.63,5,C,C) Ma=10.67000 Mi=11.31200 S=11.63000 I=11.9 01-06-2012



Jun 2009 Jul Aug Sep Oct Nov Dec 2010 Jan Feb Mar Apr May Jun Jul Aug Sep Oct Nov Dec 2011 Jan Feb Mar Apr May Jun 2012

© BullSystems www.bullsystems.com

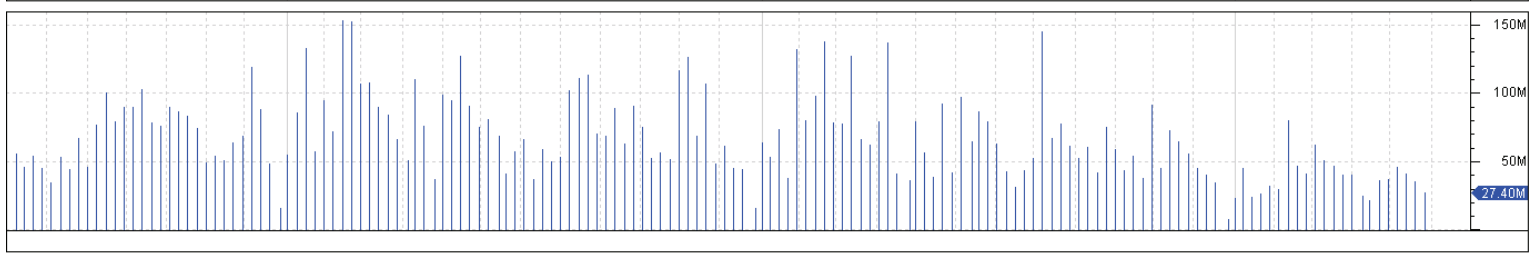
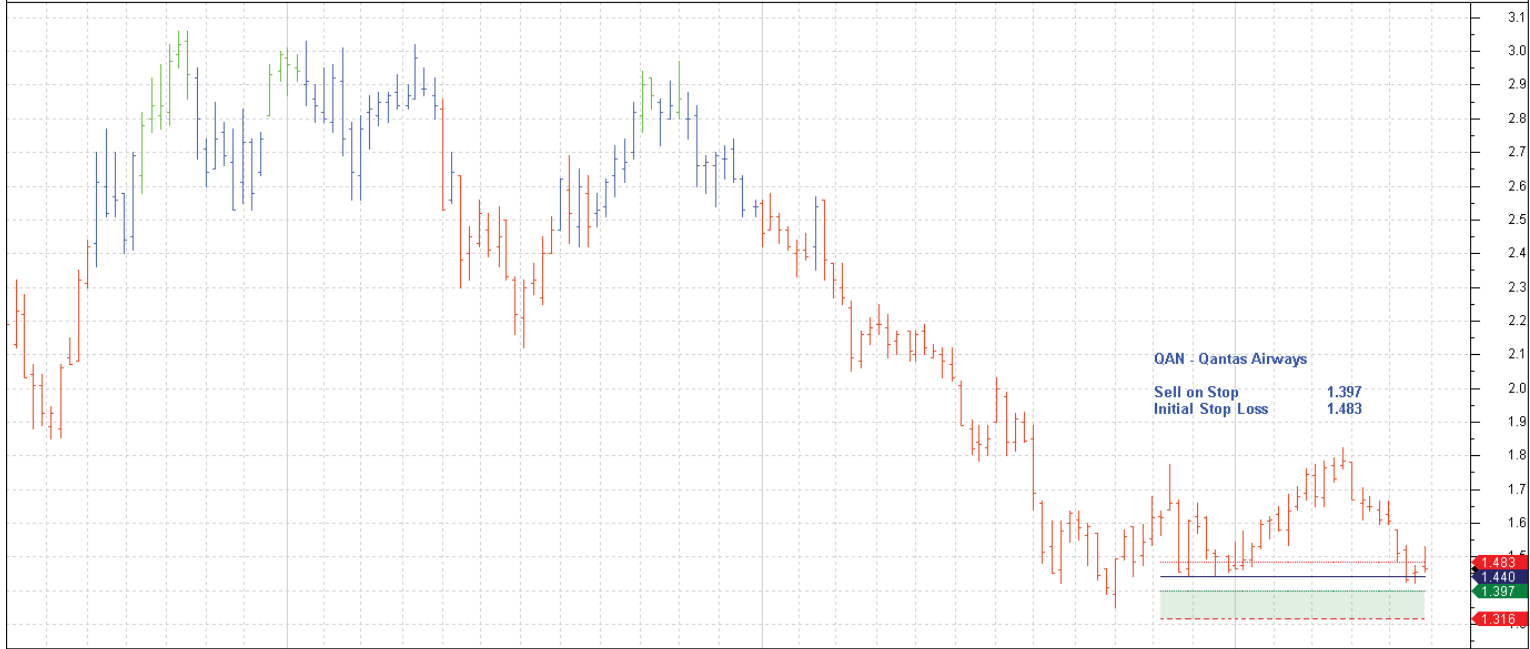
OGC Weekly CI=1.79000 O=1.82000 H=1.90500 L=1.76000 +0.03500 +1.99% OGC Weekly LW-DIPC(1.5,5,34) 01-06-2012



Jun 2009 Jul Aug Sep Oct Nov Dec 2010 Jan Feb Mar Apr May Jun Jul Aug Sep Oct Nov Dec 2011 Jan Feb Mar Apr May Jun 2012

© BullSystems www.bullsystems.com

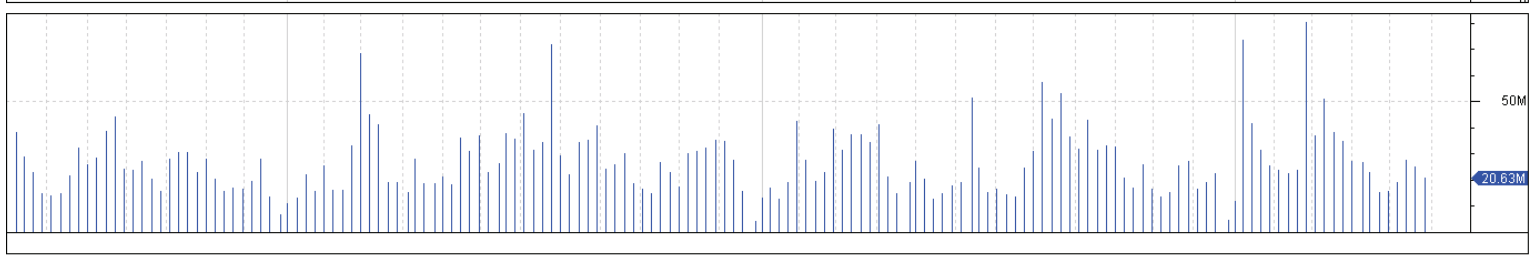
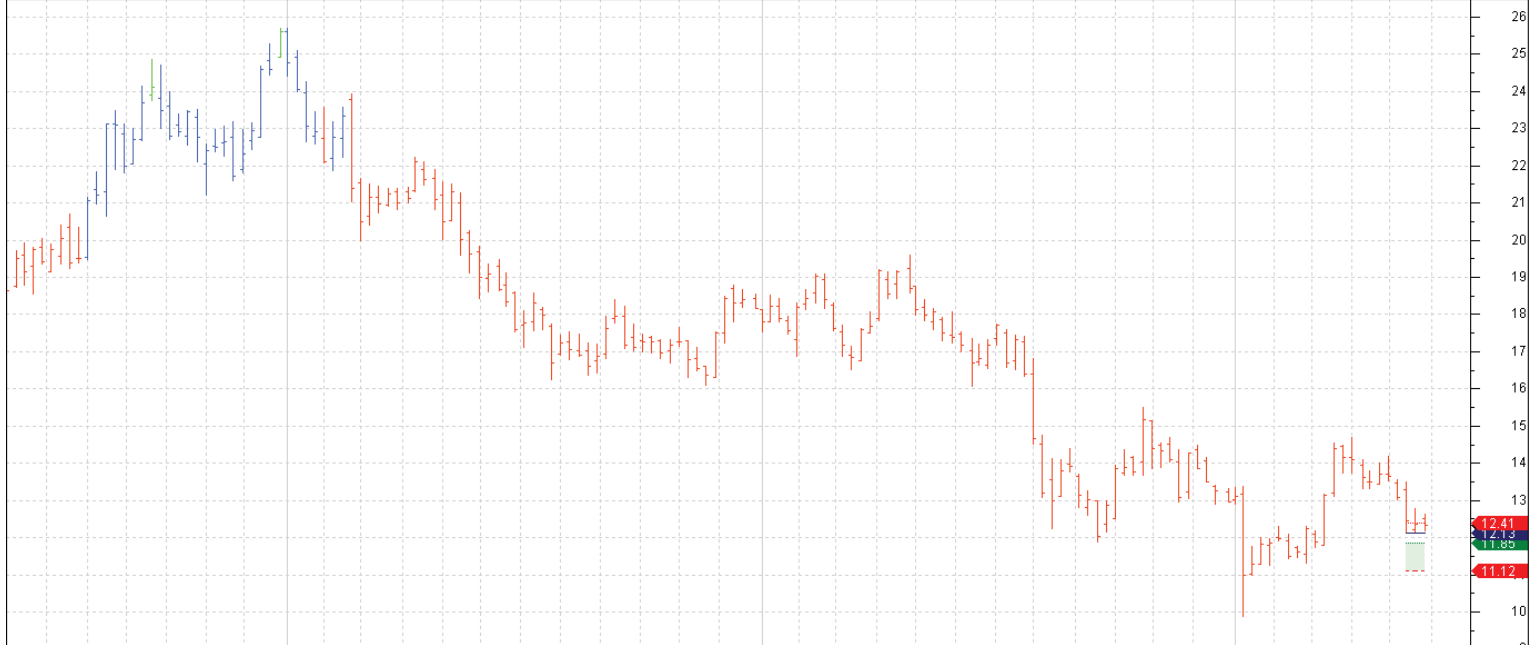
QAN Weekly CI=1.46500 O=1.47000 H=1.53000 L=1.45500 +0.01000 +0.69% QAN Weekly LW-DIPC(1.5,5,34) QAN Weekly LW-MCS(31-10-2011,1.44,5,C,C) Ma=1.31600 Mi=1.39700 S=1.44000 I=1.48300 01-06-2012



Jun 2009 Jul Aug Sep Oct Nov Dec 2010 Jan Feb Mar Apr May Jun Jul Aug Sep Oct Nov Dec 2011 Jan Feb Mar Apr May Jun 2012

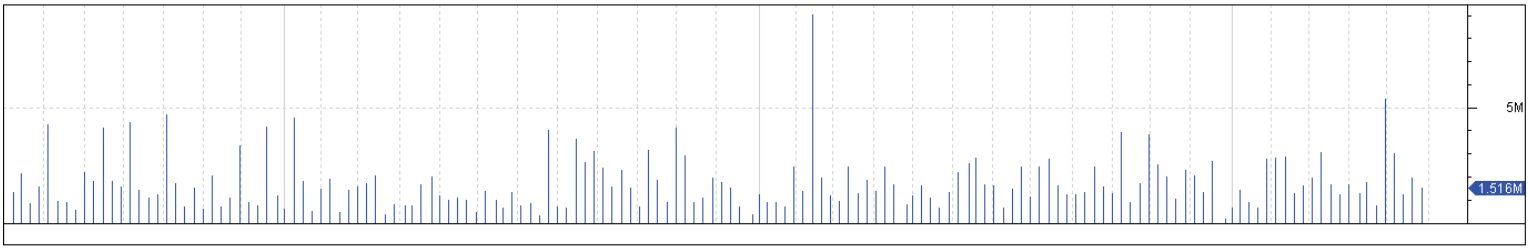
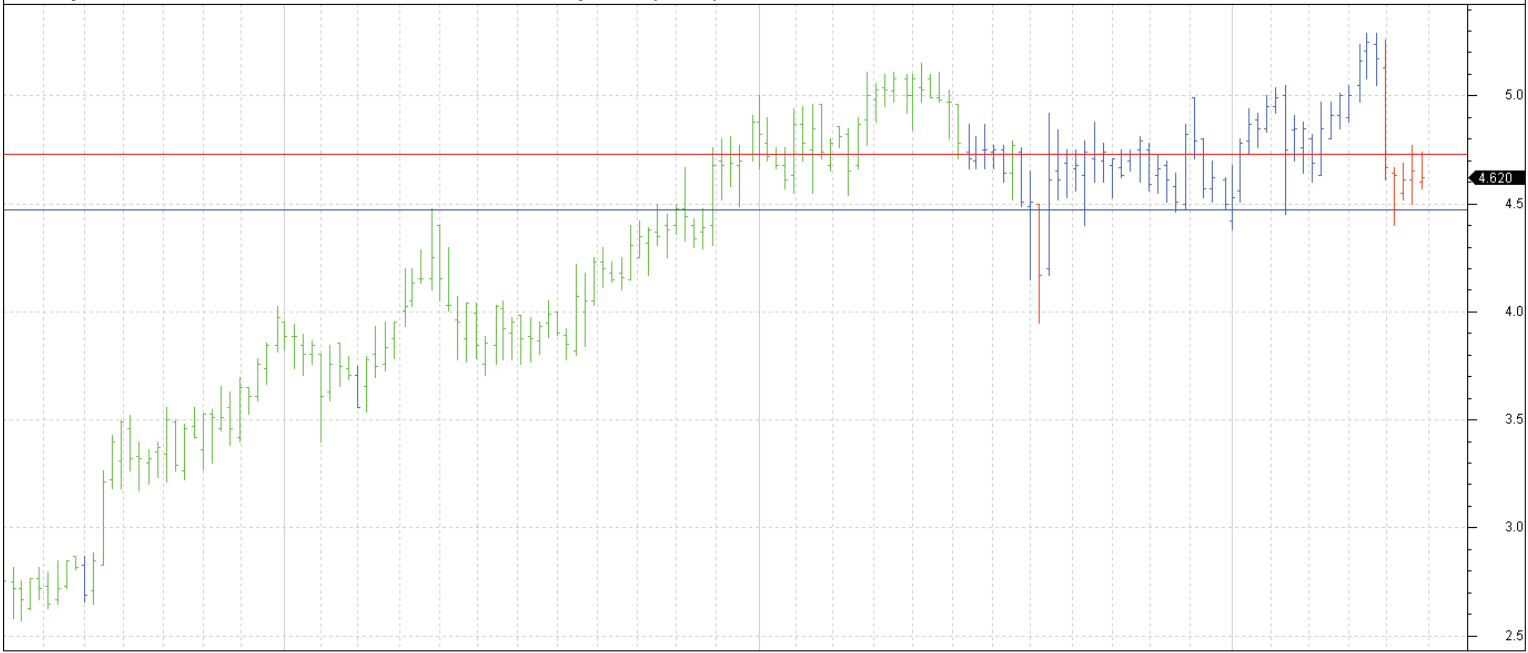
© BullSystems www.bullsystems.com

QBE Weekly CI=12.34000 O=12.50000 H=12.64000 L=12.19000 -0.01000 -0.08% QBE Weekly LW-DIPC(1.5,5,34) QBE Weekly LW-MCS(07-05-2012,12.13,5,C,C) Ma=11.12000 Mi=11.85400 S=12.13000 I=12.406 01-06-2012

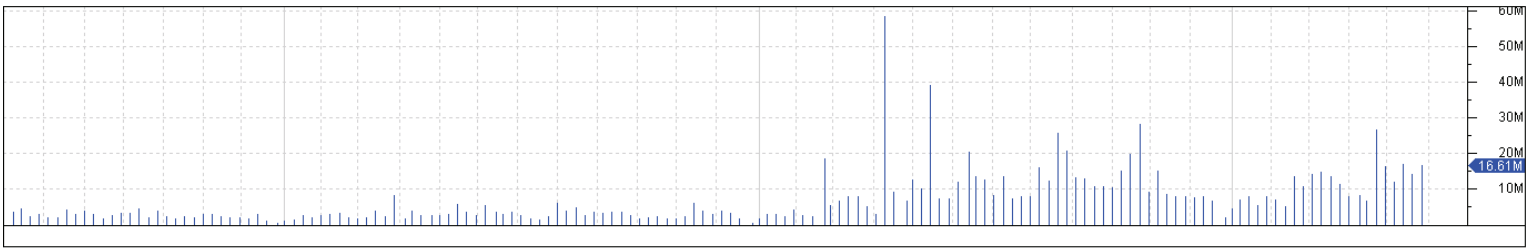


Jun 2009 Jul Aug Sep Oct Nov Dec 2010 Jan Feb Mar Apr May Jun Jul Aug Sep Oct Nov Dec 2011 Jan Feb Mar Apr May Jun 2012

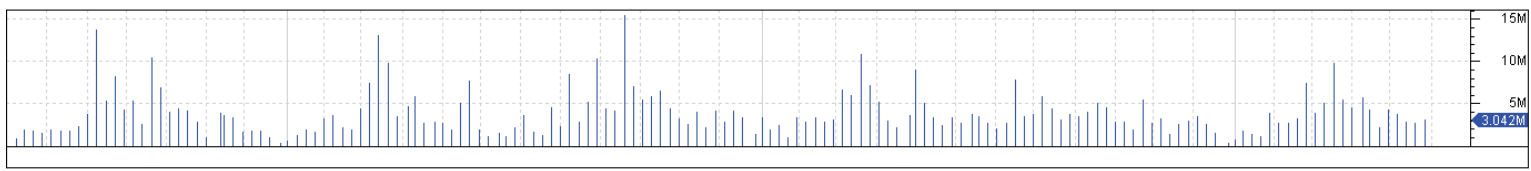
© BullSystems www.bullsystems.com



Jun 2009	Jul	Aug	Sep	Oct	Nov	Dec	Jan 2010	Feb	Mar	Apr	May	Jun	Jul	Aug	Sep	Oct	Nov	Dec	Jan 2011	Feb	Mar	Apr	May	Jun	Jul	Aug	Sep	Oct	Nov	Dec	Jan 2012	Feb	Mar	Apr	May	Jun
----------	-----	-----	-----	-----	-----	-----	----------	-----	-----	-----	-----	-----	-----	-----	-----	-----	-----	-----	----------	-----	-----	-----	-----	-----	-----	-----	-----	-----	-----	-----	----------	-----	-----	-----	-----	-----



Jun 2009	Jul	Aug	Sep	Oct	Nov	Dec	Jan 2010	Feb	Mar	Apr	May	Jun	Jul	Aug	Sep	Oct	Nov	Dec	Jan 2011	Feb	Mar	Apr	May	Jun	Jul	Aug	Sep	Oct	Nov	Dec	Jan 2012	Feb	Mar	Apr	May	Jun
----------	-----	-----	-----	-----	-----	-----	----------	-----	-----	-----	-----	-----	-----	-----	-----	-----	-----	-----	----------	-----	-----	-----	-----	-----	-----	-----	-----	-----	-----	-----	----------	-----	-----	-----	-----	-----



Jun 2009	Jul	Aug	Sep	Oct	Nov	Dec	Jan 2010	Feb	Mar	Apr	May	Jun	Jul	Aug	Sep	Oct	Nov	Dec	Jan 2011	Feb	Mar	Apr	May	Jun	Jul	Aug	Sep	Oct	Nov	Dec	Jan 2012	Feb	Mar	Apr	May	Jun
----------	-----	-----	-----	-----	-----	-----	----------	-----	-----	-----	-----	-----	-----	-----	-----	-----	-----	-----	----------	-----	-----	-----	-----	-----	-----	-----	-----	-----	-----	-----	----------	-----	-----	-----	-----	-----