

Week Ending 18<sup>th</sup> November, 2011

Europe has remained the centre of attention again this week, with the toppling of 2 Prime Ministers – Greece & Italy. One can only hope that sanity will be restored and these countries will be run as they should be, as international businesses, and not to protect the personal power of the leaders.

We had 2 entries this week

Have a great week all

BSE:

Entries: Ashok Leyland Ltd, Apollo Hospitals Enterprises

Exits: Nil

The colour coding we are currently using is as follows:

Amended orders or stops

Retained Orders or stops – no change

New working orders

Immediate action required

Short Sell

Currency – Indian Rupee

Open Positions

---

| Stops: | Old | Action | New |
|--------|-----|--------|-----|
|--------|-----|--------|-----|

Amended

Nil

Retained

|                      |        |       |        |       |
|----------------------|--------|-------|--------|-------|
| Ashok Leyland Ltd    | 500477 | 26.89 | Retain | 26.89 |
| Apollo Hospitals Ent | 508869 | 542.7 | Retain | 542.7 |

Cancelled Orders

Nil

## Working Orders

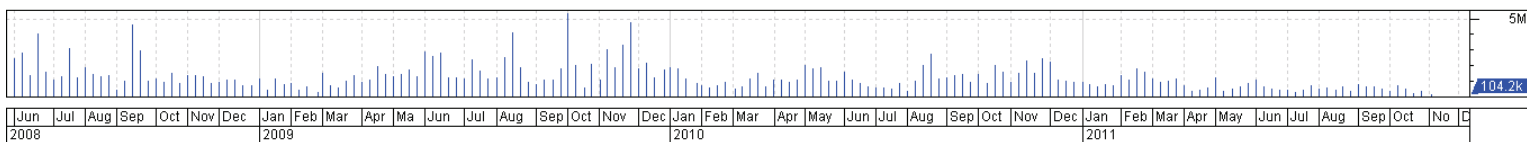
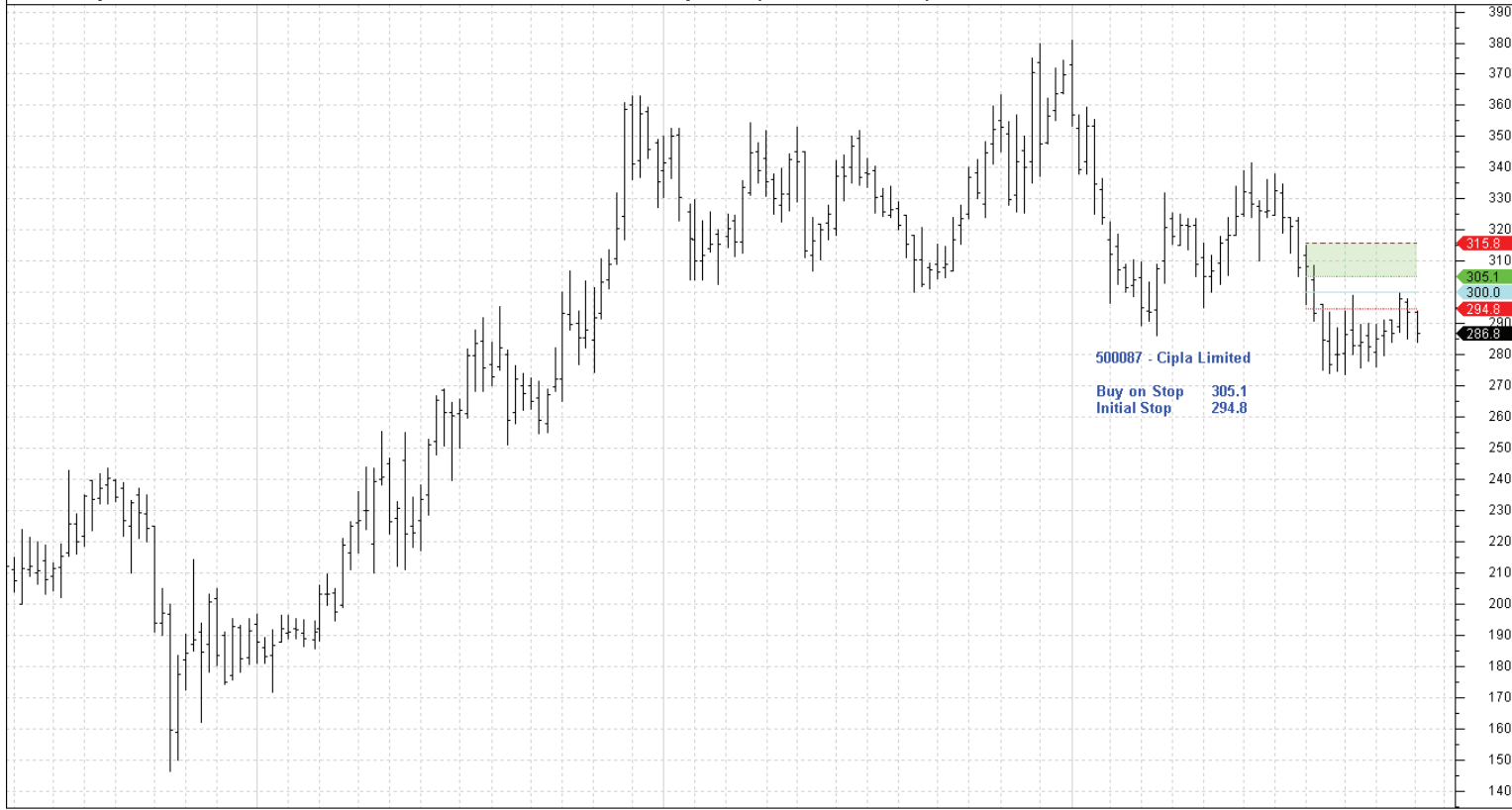
| Commodity                | Code   | Direction | Entry   | Stop    |
|--------------------------|--------|-----------|---------|---------|
| <b><u>Amended</u></b>    |        |           |         |         |
| Cipla Ltd                | 500087 | Buy       | 305.1   | 294.8   |
| Bharat Heavy Electricals | 500103 | Buy       | 353.3   | 334.7   |
| HDFC Bank                | 500182 | Buy       | 509.2   | 485.8   |
| Kotak Mahindra Bank      | 500247 | Buy       | 527.5   | 490.4   |
| LIC Housing Finance      | 500253 | Buy       | 259.1   | 230.9   |
| Lupin Limited            | 500257 | Buy       | 500.8   | 483.2   |
| Grasim Industries        | 500300 | Buy       | 2575.3  | 2449.7  |
| Aditya Birla Nuvo        | 500303 | Buy       | 1008    | 979.33  |
| Nestle India             | 500790 | Buy       | 4606.63 | 4427.37 |
| Adani Enterprises        | 512599 | Sell      | 444.53  | 467.32  |
| Bank of India            | 532149 | Buy       | 358.59  | 333.01  |
| Mahindra & Mahindra Fin  | 532720 | Buy       | 712.2   | 675.6   |
| Central Bank of India    | 532885 | Buy       | 110.7   | 104.1   |
| NHPC Limited             | 533098 | Buy       | 26.348  | 25.22   |

## Retained

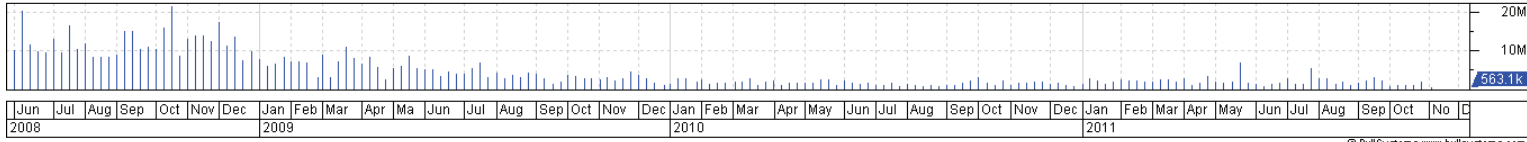
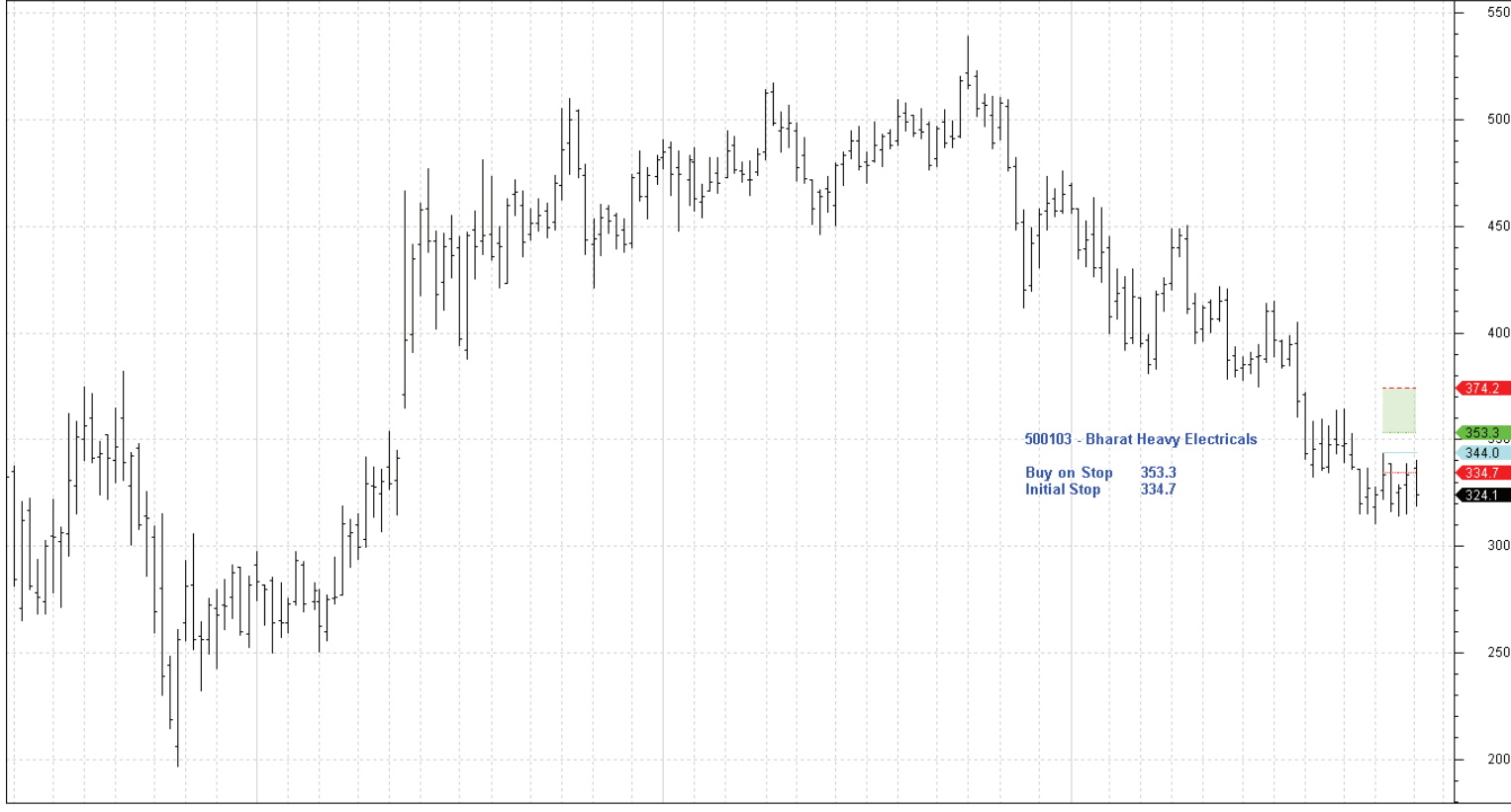
Nil

## New

## Charts

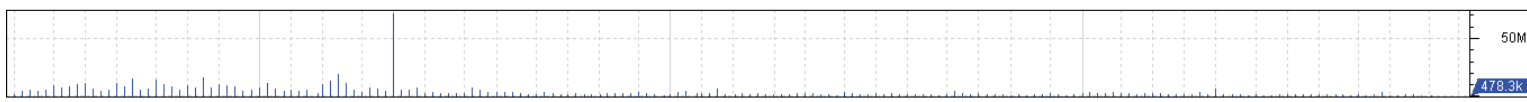
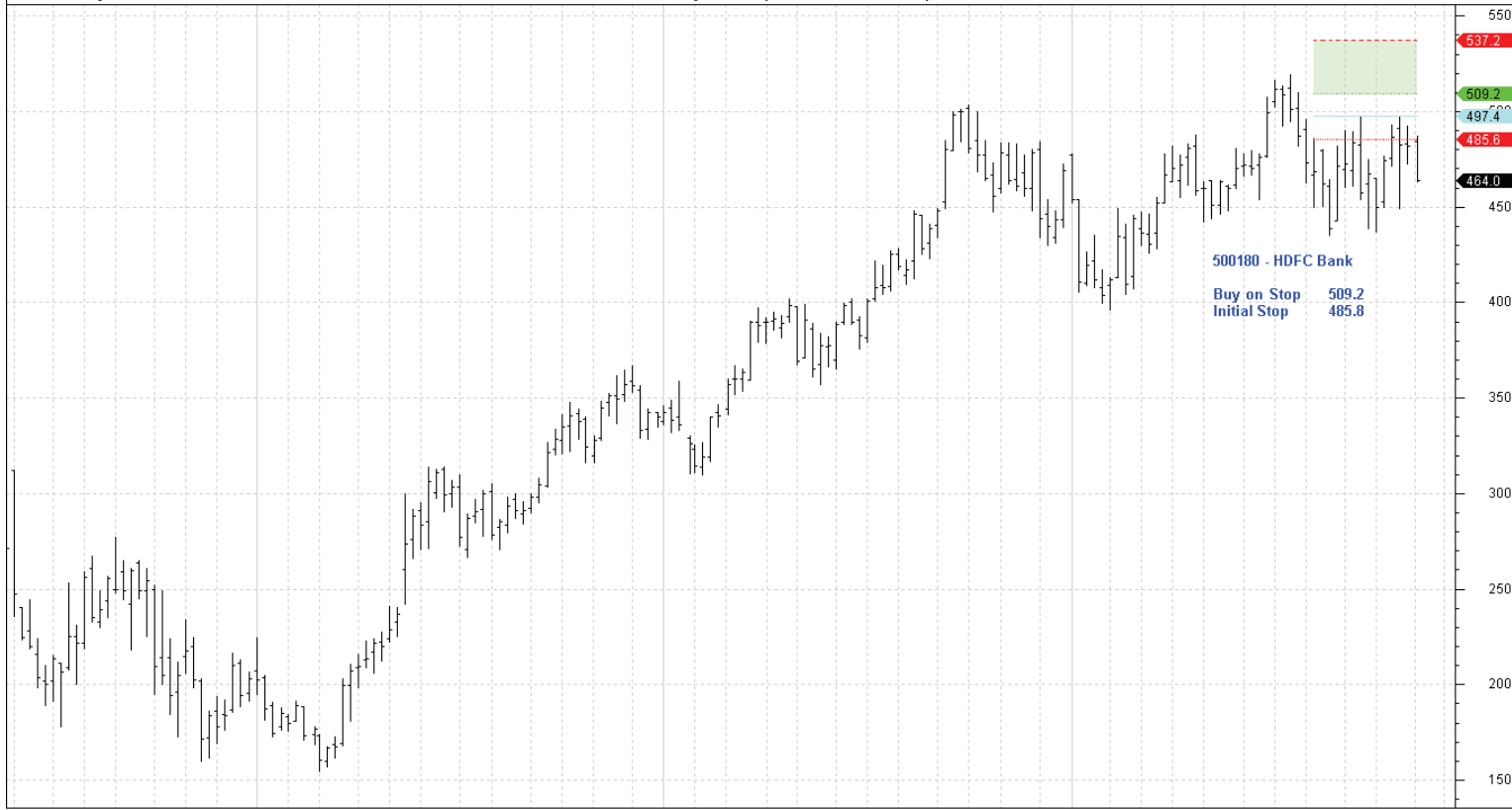


Jun Jul Aug Sep Oct Nov Dec 2008 Jan Feb Mar Apr Ma Jun Jul Aug Sep Oct Nov Dec 2009 Jan Feb Mar Apr May Jun Jul Aug Sep Oct Nov Dec 2010 Jan Feb Mar Apr May Jun Jul Aug Sep Oct Nov Dec 2011



Jun Jul Aug Sep Oct Nov Dec 2008 Jan Feb Mar Apr Ma Jun Jul Aug Sep Oct Nov Dec 2009 Jan Feb Mar Apr May Jun Jul Aug Sep Oct Nov Dec 2010 Jan Feb Mar Apr May Jun Jul Aug Sep Oct Nov Dec 2011

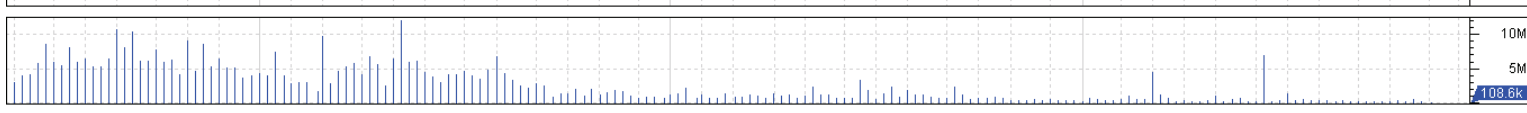
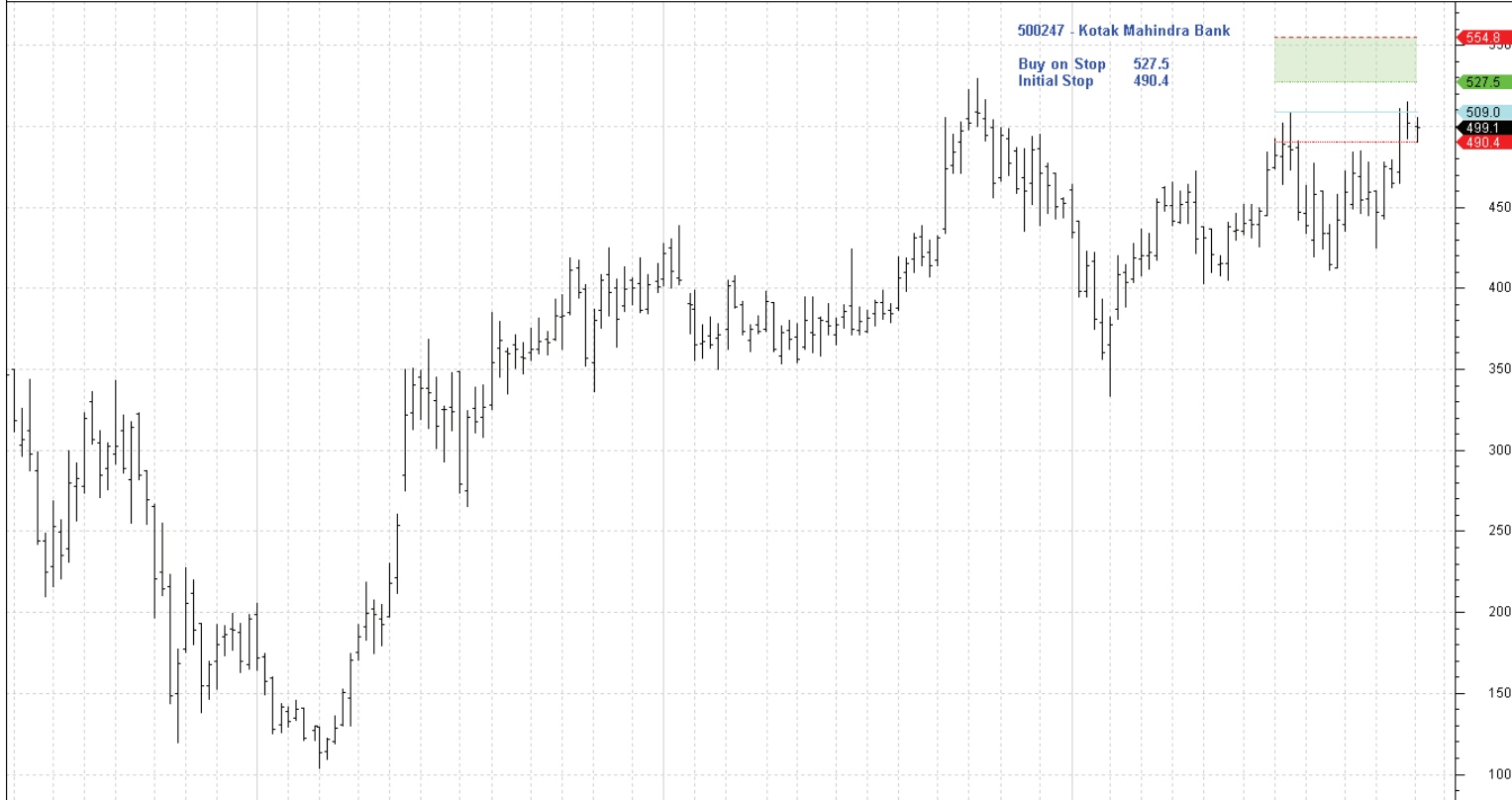
500180 Weekly CI=463.95000 O=484.00000 H=487.10000 L=463.00000 -18.15000 -3.76% 500180 Weekly LW-MCL(01-08-2011,497.4,5,C,C) Ma=537.15000 Mi=509.17000 R=497.40000 I=485.63000 11-11-2011



Jun Jul Aug Sep Oct Nov Dec 2008 Jan Feb Mar Apr Ma Jun Jul Aug Sep Oct Nov Dec Jan Feb Mar Apr May Jun Jul Aug Sep Oct No 2011

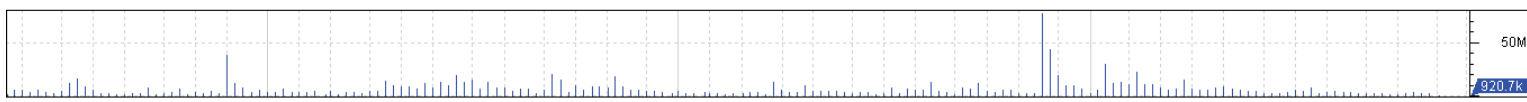
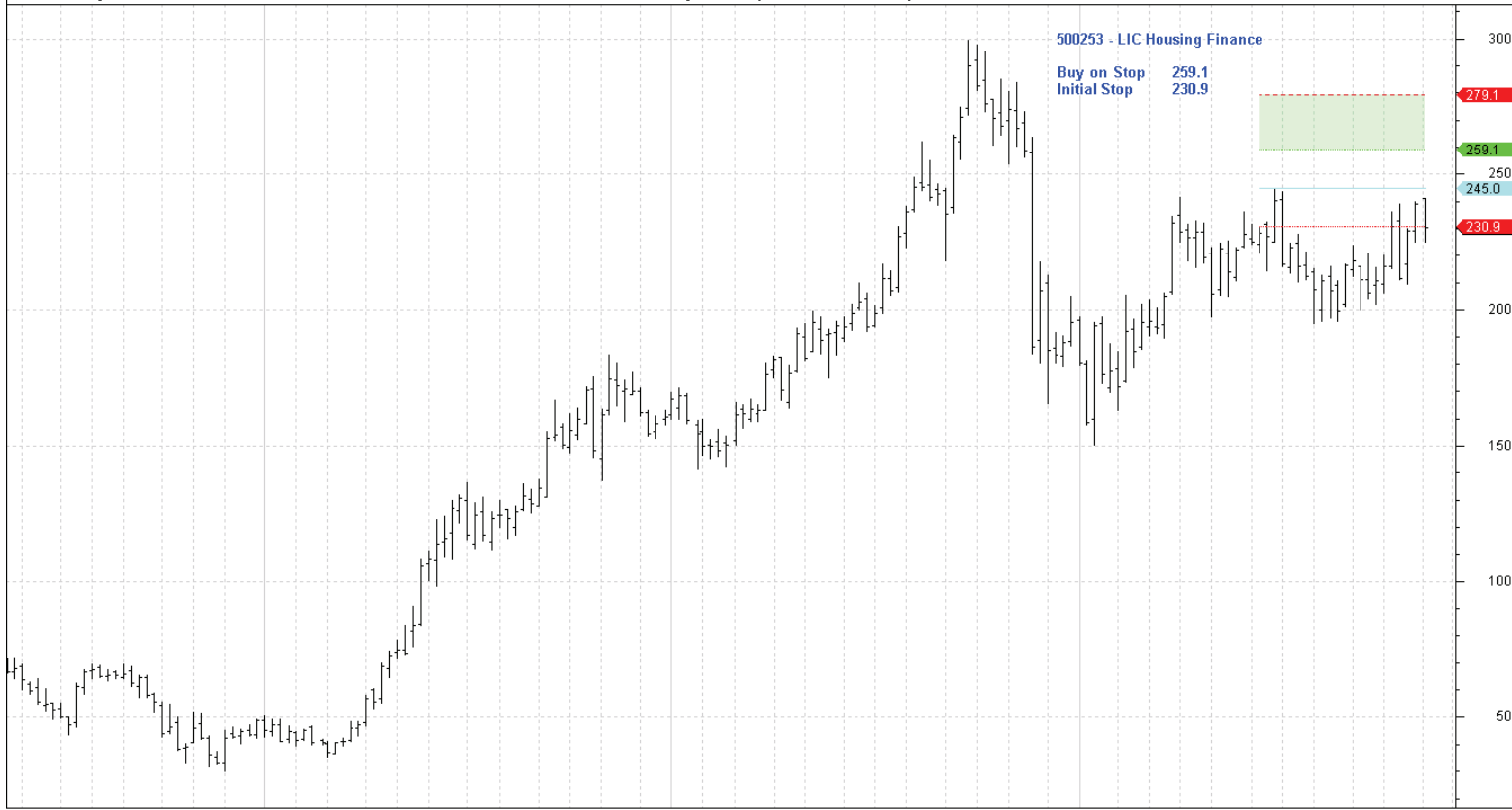
© BullSystems www.bullsystems.com

500247 Weekly CI=499.10000 O=500.00000 H=505.40000 L=490.00000 -3.15000 -0.63% 500247 Weekly LW-MCL(27-06-2011,508.95,5,C,C) Ma=554.75000 Mi=527.47000 R=508.95000 I=490.43000 11-11-2011

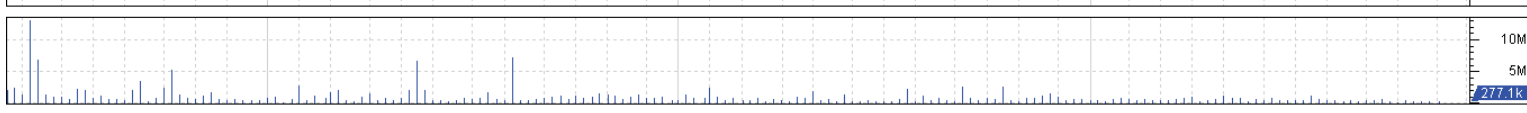
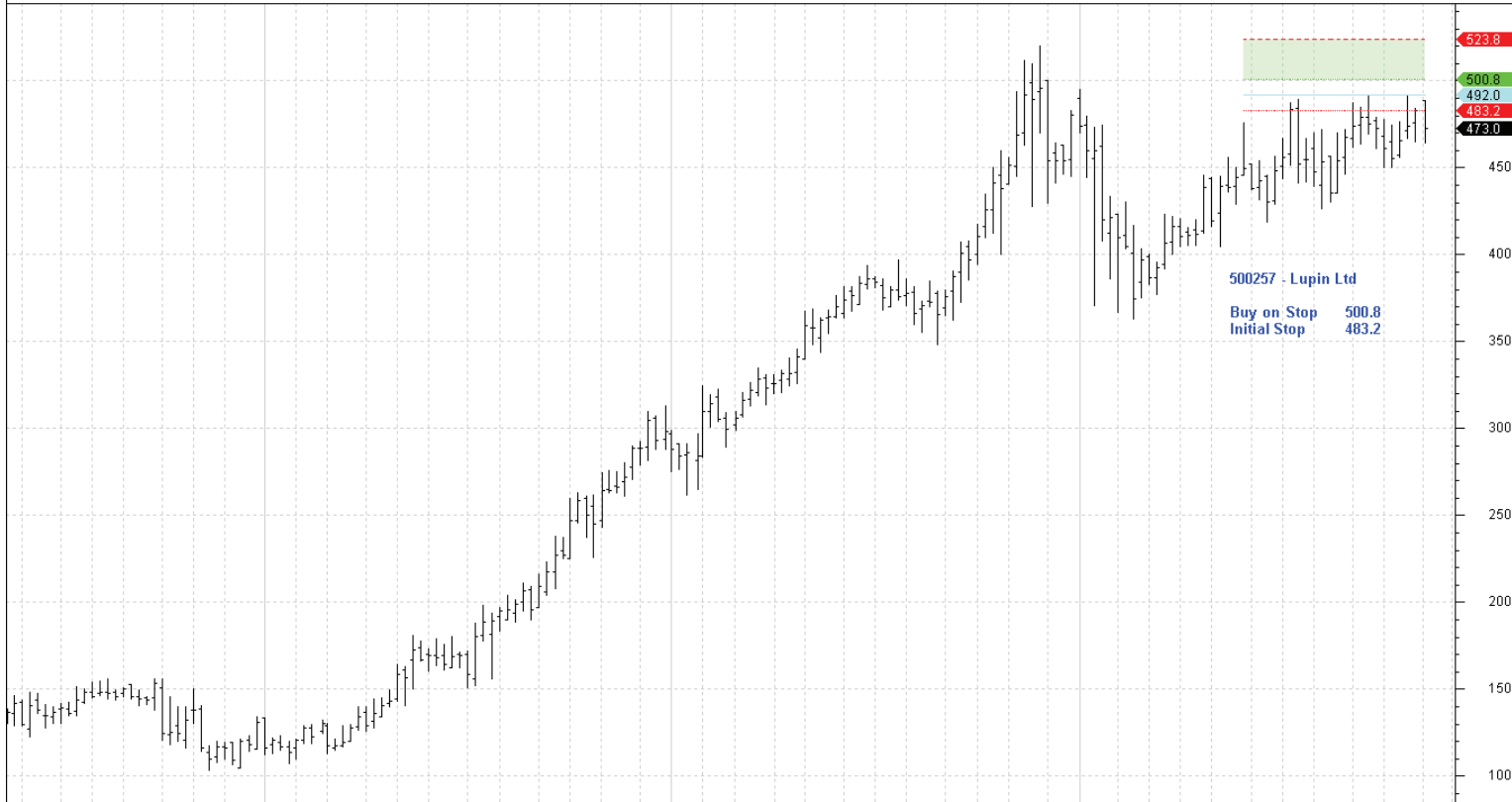


Jun Jul Aug Sep Oct Nov Dec 2008 Jan Feb Mar Apr Ma Jun Jul Aug Sep Oct No 2011

© BullSystems www.bullsystems.com



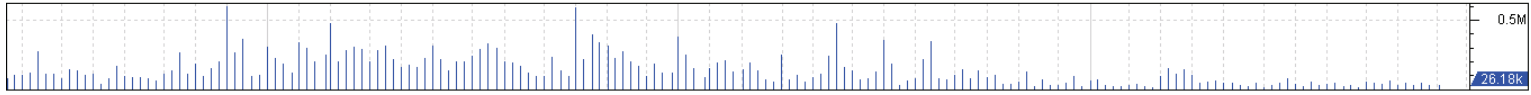
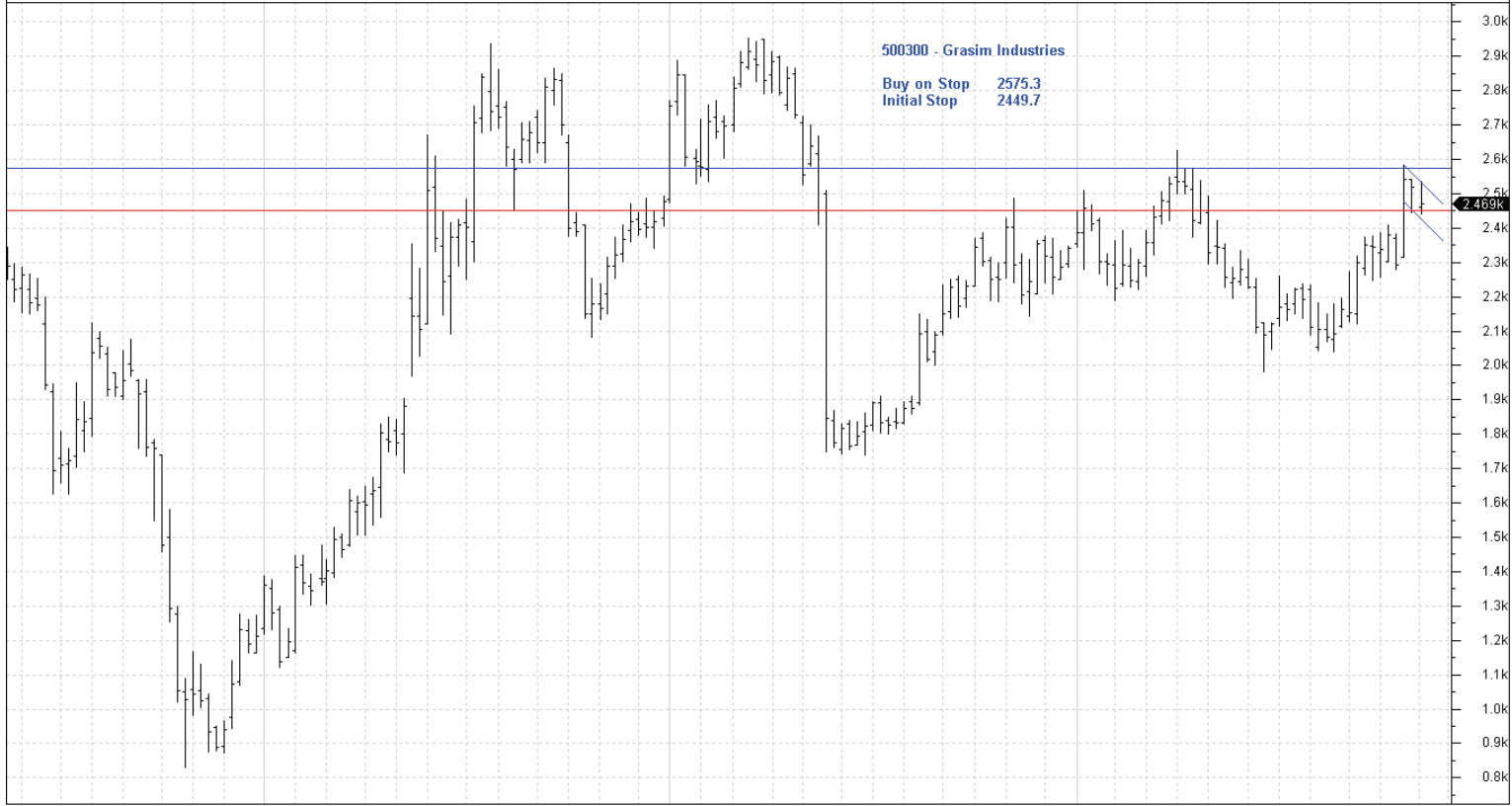
y Jun Jul Aug Sep Oct Nov Dec Jan Feb Mar Apr Ma Jun Jul Aug Sep Oct Nov Dec Jan Feb Mar Apr May Jun Jul Aug Sep Oct No  
 2008 2009 2010 2011



y Jun Jul Aug Sep Oct Nov Dec Jan Feb Mar Apr Ma Jun Jul Aug Sep Oct Nov Dec Jan Feb Mar Apr May Jun Jul Aug Sep Oct No  
 2008 2009 2010 2011

500300 Weekly CI=2,469.30000 O=2,462.00000 H=2,535.35000 L=2,440.00000 -51.55000 -2.04%

11-11-2011

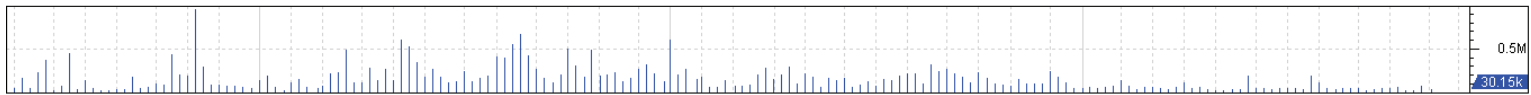
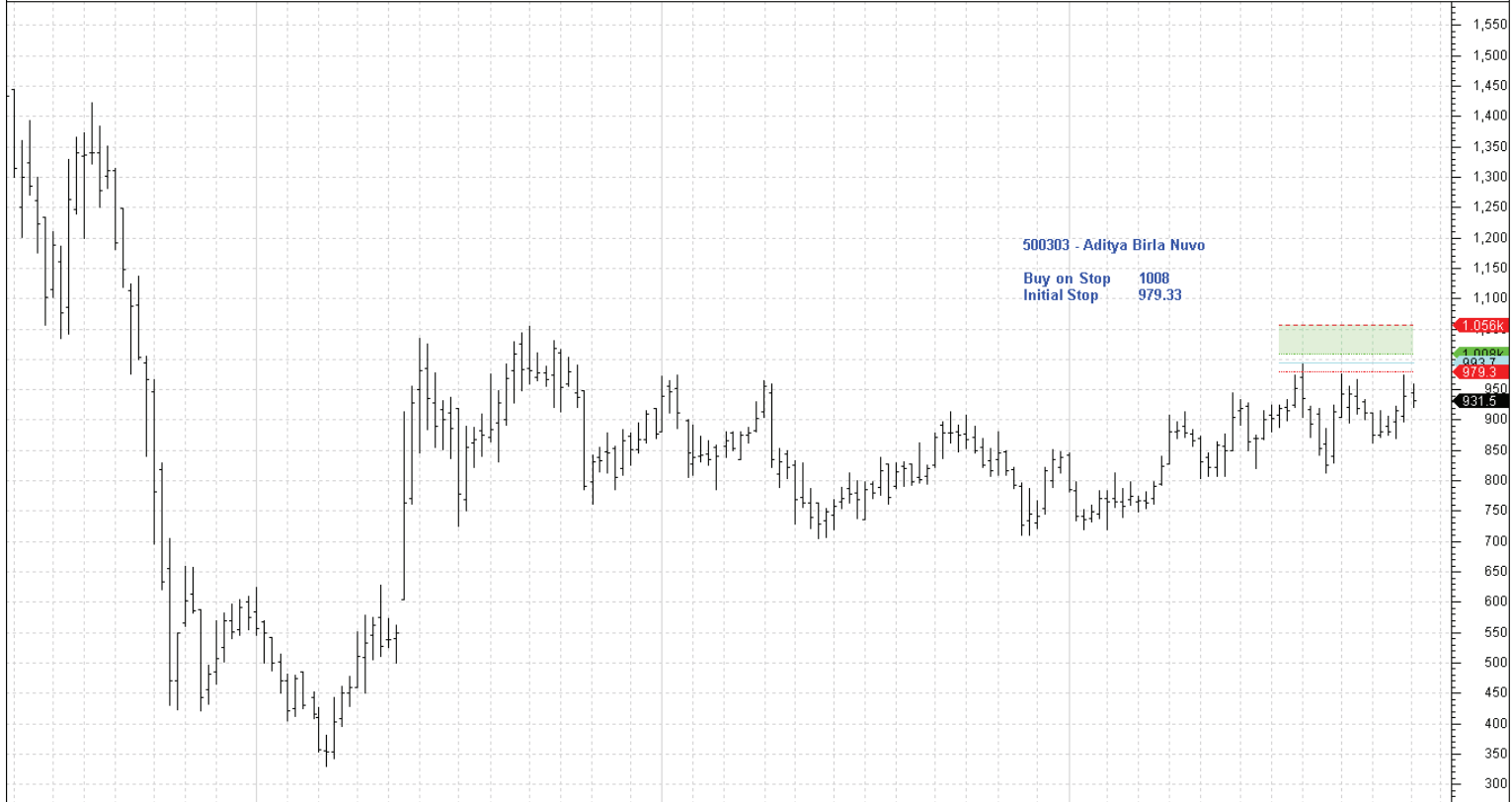


Jun Jul Aug Sep Oct Nov Dec 2008 Jan Feb Mar Apr Ma Jun Jul Aug Sep Oct Nov Dec 2009 Jan Feb Mar Apr May Jun Jul Aug Sep Oct No 2010 Jan Feb Mar Apr May Jun Jul Aug Sep Oct Nov Dec 2011

© BullSystems www.bullsystems.com

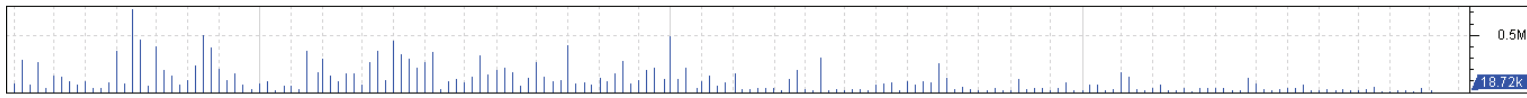
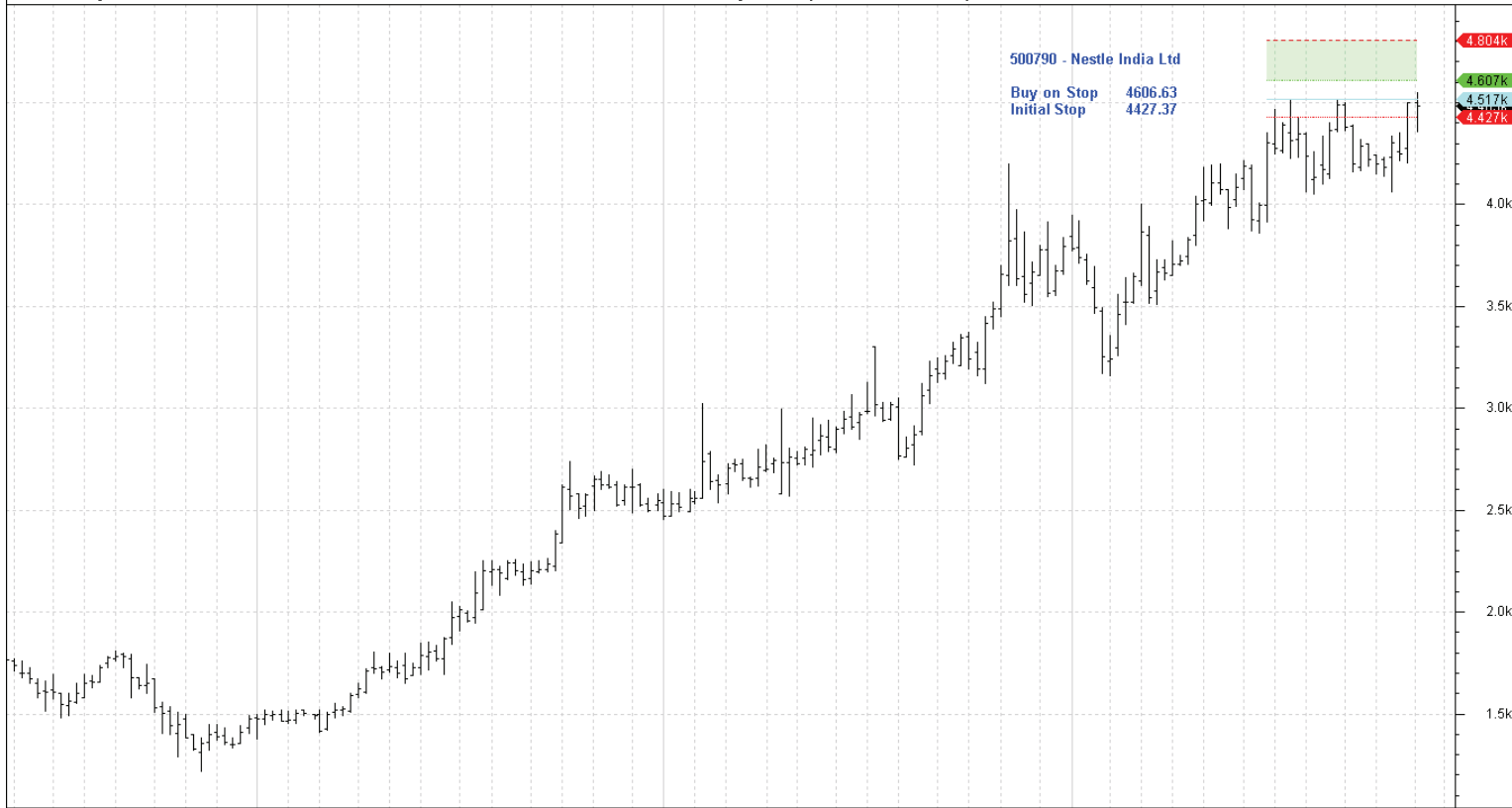
500303 Weekly CI=931.45000 O=945.00000 H=959.00000 L=920.20000 -7.70000 -0.82% 500303 Weekly LW-MCL(04-07-2011,993.65,5,C,C) Ma=1,056.25000 Mi=1,007.97000 R=993.65000 I=979.33000

11-11-2011

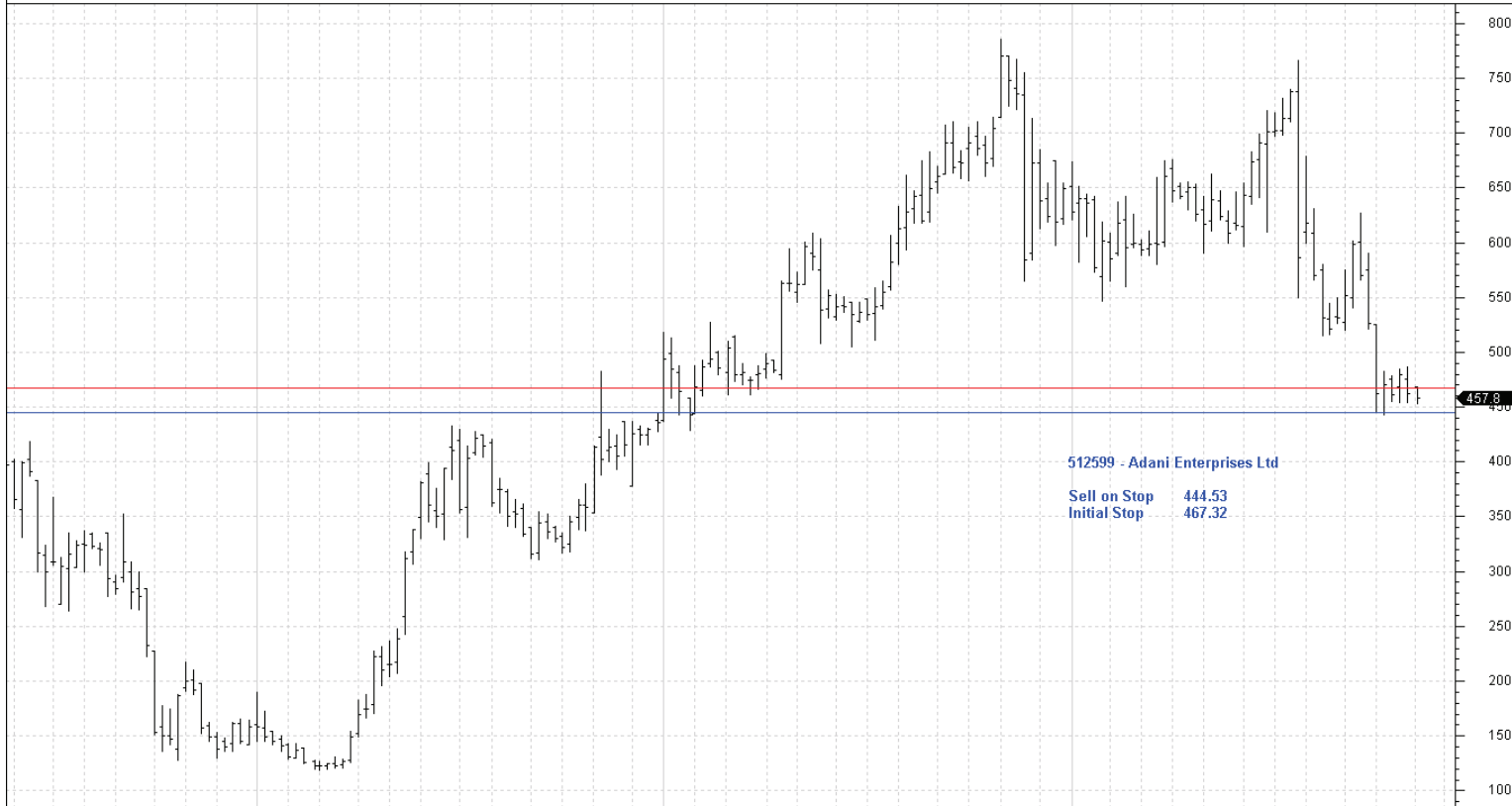


Jun Jul Aug Sep Oct Nov Dec 2008 Jan Feb Mar Apr Ma Jun Jul Aug Sep Oct Nov Dec 2009 Jan Feb Mar Apr May Jun Jul Aug Sep Oct No 2010 Jan Feb Mar Apr May Jun Jul Aug Sep Oct Nov Dec 2011

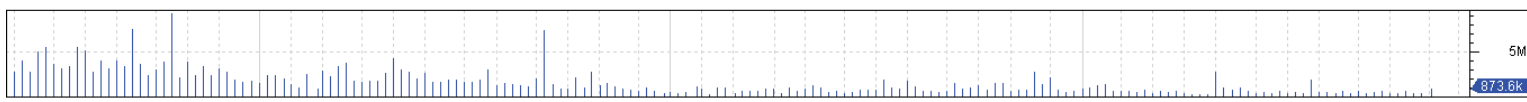
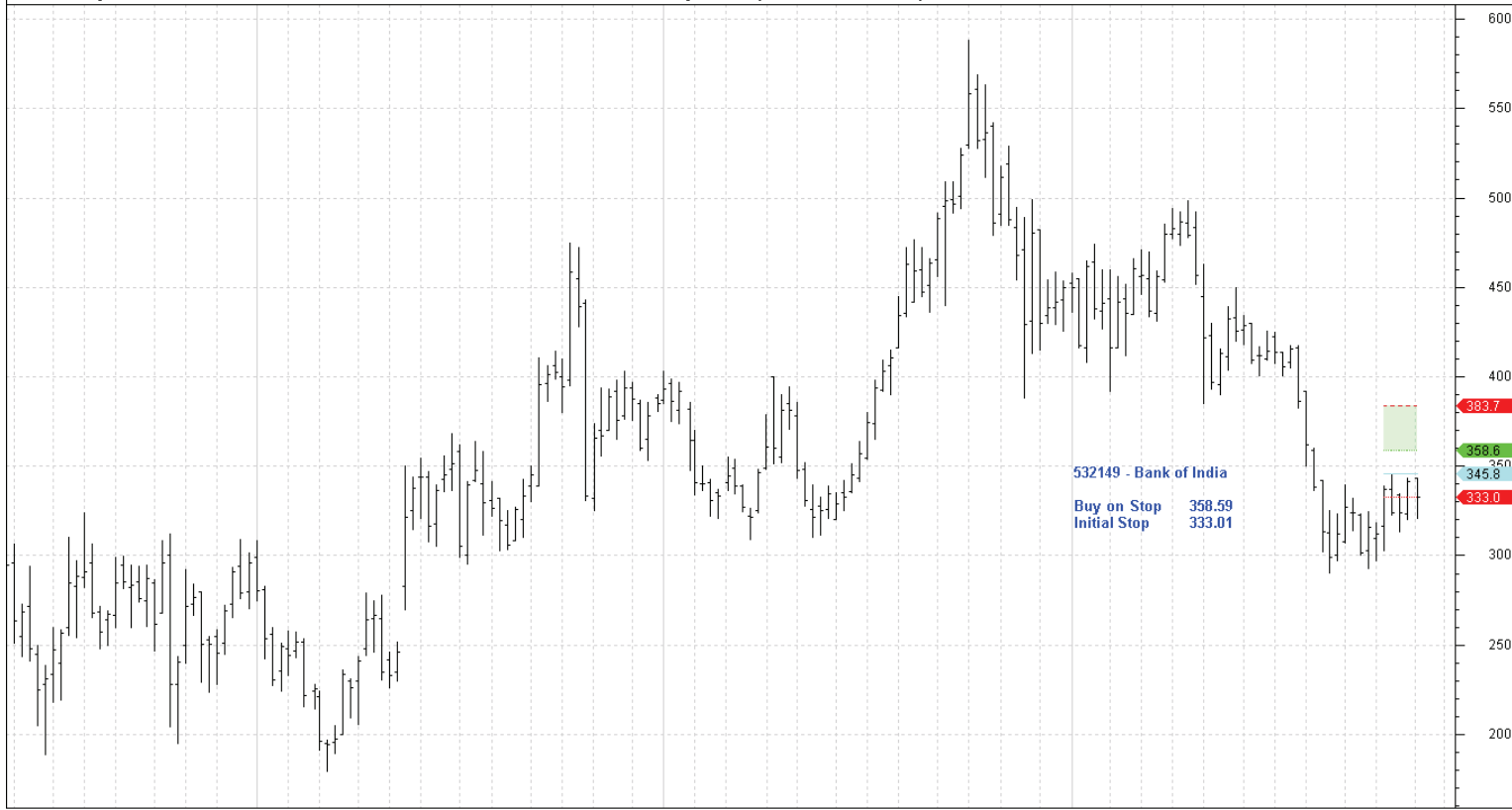
© BullSystems www.bullsystems.com



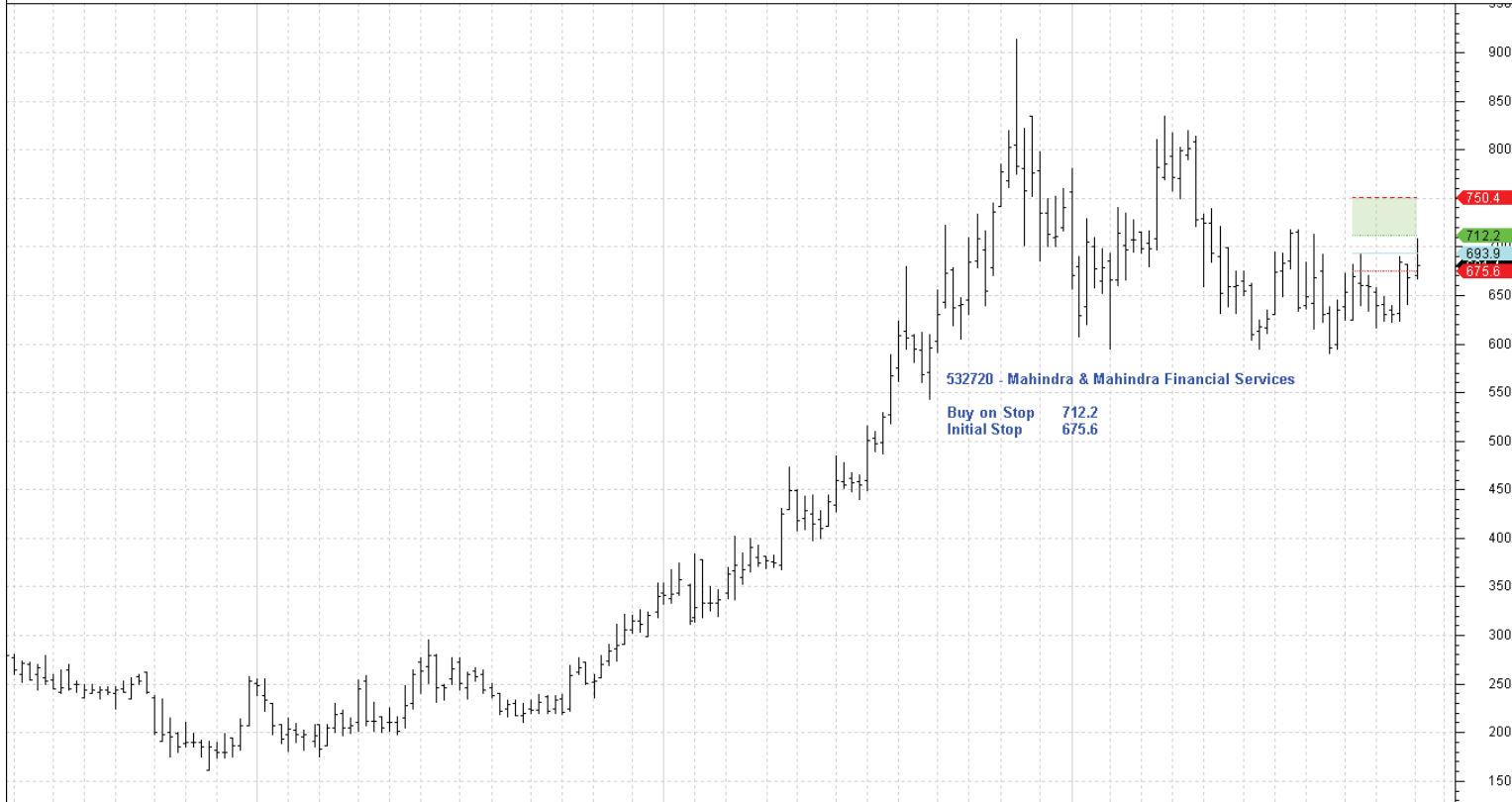
Jun Jul Aug Sep Oct Nov Dec 2008 Jan Feb Mar Apr Ma Jun Jul Aug Sep Oct Nov Dec 2009 Jan Feb Mar Apr May Jun Jul Aug Sep Oct Nov Dec 2010 Jan Feb Mar Apr May Jun Jul Aug Sep Oct Nov Dec 2011



Jun Jul Aug Sep Oct Nov Dec 2008 Jan Feb Mar Apr Ma Jun Jul Aug Sep Oct Nov Dec 2009 Jan Feb Mar Apr May Jun Jul Aug Sep Oct Nov Dec 2010 Jan Feb Mar Apr May Jun Jul Aug Sep Oct Nov Dec 2011

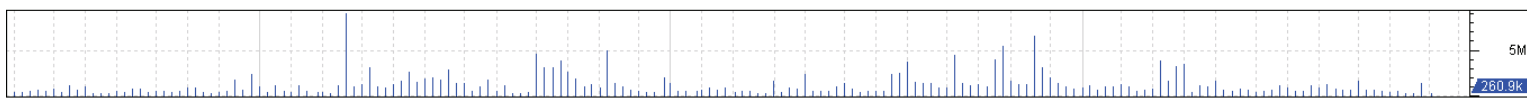
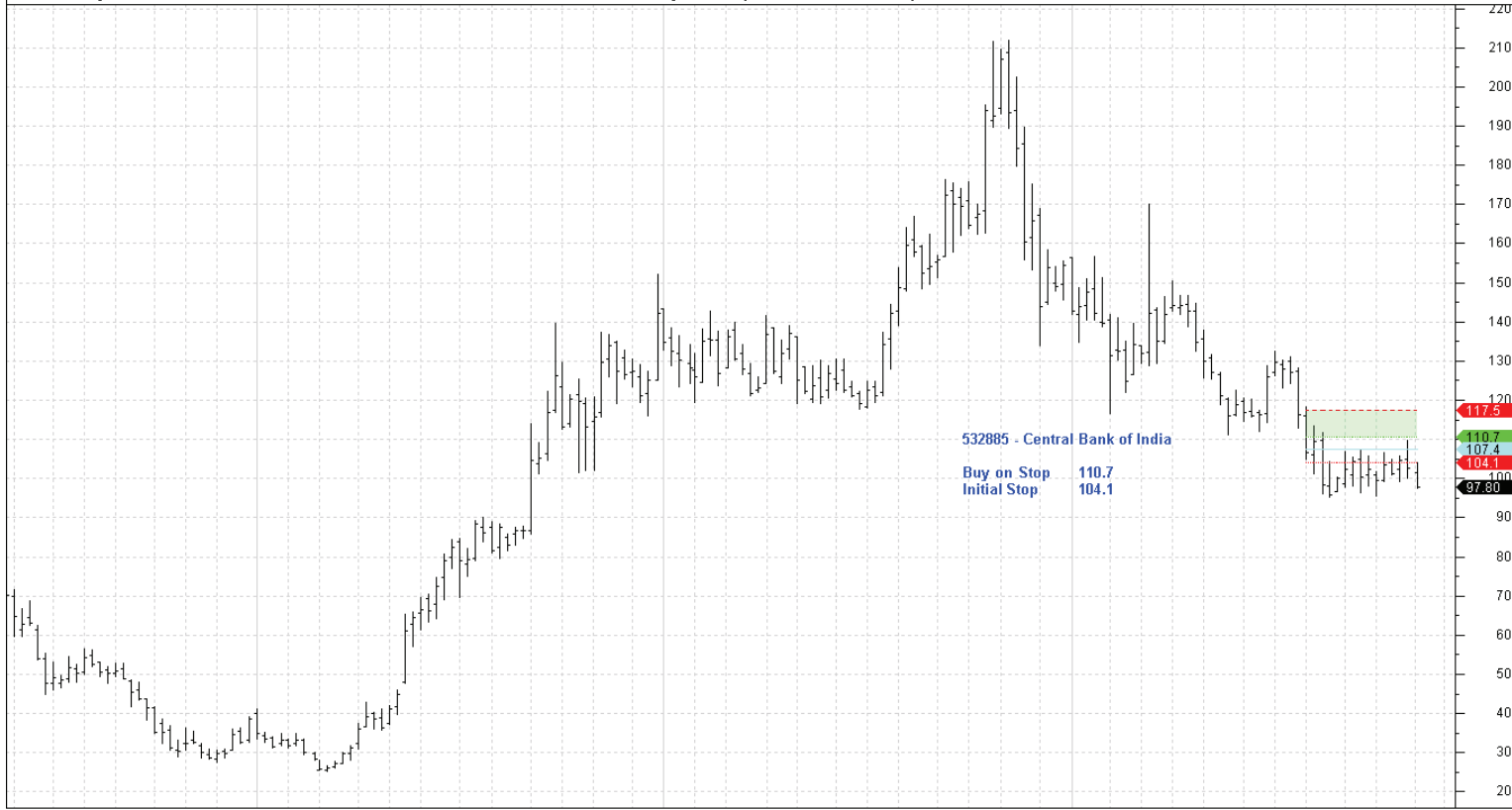


Jun Jul Aug Sep Oct Nov Dec 2008 Jan Feb Mar Apr Ma Jun Jul Aug Sep Oct Nov Dec 2009 Jan Feb Mar Apr May Jun Jul Aug Sep Oct Nov Dec 2010 Jan Feb Mar Apr May Jun Jul Aug Sep Oct Nov Dec 2011



Jun Jul Aug Sep Oct Nov Dec 2008 Jan Feb Mar Apr Ma Jun Jul Aug Sep Oct Nov Dec 2009 Jan Feb Mar Apr May Jun Jul Aug Sep Oct Nov Dec 2010 Jan Feb Mar Apr May Jun Jul Aug Sep Oct Nov Dec 2011





|      |     |     |     |     |     |     |      |     |     |     |    |     |     |     |     |     |     |     |     |      |     |     |     |     |     |     |     |     |     |    |  |      |  |  |  |  |  |  |  |  |  |  |  |  |  |  |  |  |
|------|-----|-----|-----|-----|-----|-----|------|-----|-----|-----|----|-----|-----|-----|-----|-----|-----|-----|-----|------|-----|-----|-----|-----|-----|-----|-----|-----|-----|----|--|------|--|--|--|--|--|--|--|--|--|--|--|--|--|--|--|--|
| Jun  | Jul | Aug | Sep | Oct | Nov | Dec | Jan  | Feb | Mar | Apr | Ma | Jun | Jul | Aug | Sep | Oct | Nov | Dec | Jan | Feb  | Mar | Apr | May | Jun | Jul | Aug | Sep | Oct | Nov | De |  |      |  |  |  |  |  |  |  |  |  |  |  |  |  |  |  |  |
| 2008 |     |     |     |     |     |     | 2009 |     |     |     |    |     |     |     |     |     |     |     |     | 2010 |     |     |     |     |     |     |     |     |     |    |  | 2011 |  |  |  |  |  |  |  |  |  |  |  |  |  |  |  |  |



|      |     |     |     |      |     |     |     |     |     |     |     |     |     |     |    |      |  |  |  |  |  |  |  |  |  |  |  |  |  |  |  |  |
|------|-----|-----|-----|------|-----|-----|-----|-----|-----|-----|-----|-----|-----|-----|----|------|--|--|--|--|--|--|--|--|--|--|--|--|--|--|--|--|
| Sep  | Oct | Nov | Dec | Jan  | Feb | Mar | Apr | May | Jun | Jul | Aug | Sep | Oct | Nov | De |      |  |  |  |  |  |  |  |  |  |  |  |  |  |  |  |  |
| 2009 |     |     |     | 2010 |     |     |     |     |     |     |     |     |     |     |    | 2011 |  |  |  |  |  |  |  |  |  |  |  |  |  |  |  |  |