

Week Ending 2nd March 2012

London Stock Exchange finished mostly up, we are expecting there will be an increasing number of potential entries over the coming weeks, as there appears to be a number of stocks building upward pressure on prices

Have a great week

London Stock Exchange

Currency – British Pence

Entries: Aggreko Plc, Associated British Foods

Exits: Nil

The colour coding we are currently using is as follows:

Amended orders or stops

Retained Orders or stops – no change

New working orders

Immediate action required

Short Sell

Open Positions

Stops:	Code	Old	Action	New
<u>Amended</u>				
Alliance Trust	ATST	355.93	Amend	361.13
Balfour Beatty	BBY	268.2	Amend	274.3
Capital & Counties Prop	CAPC	187.78	Amend	187.785
JP Morgan Asian Inv Tr	JAI	194.8	Retain	197.8
Premier Oil	PMO	393.8	Retain	407.9
Qinetiq Group	QQ	136.1	Retain	137.3

Retained

Aggreko Plc	AGK	2091	Retain	2091
Barrett Developments	BDEV	115.5	Retain	115.5
Charter International	CHTR	949.8	Retain	949.8
Fenner Plc	FENR	440.8	Retain	440.8
First Group	FGP	306.64	Retain	306.64
Greggs	GRG	516.3	Retain	516.3

Working Orders

Company	Code	Direction	Entry	Stop
---------	------	-----------	-------	------

Cancelled Orders

Restaurant Group

Amended

Melrose Plc	MRO	Buy	393.6	374.6
National Grid	NG	Buy	666	640
Next Plc	NXT	Buy	2881	2770

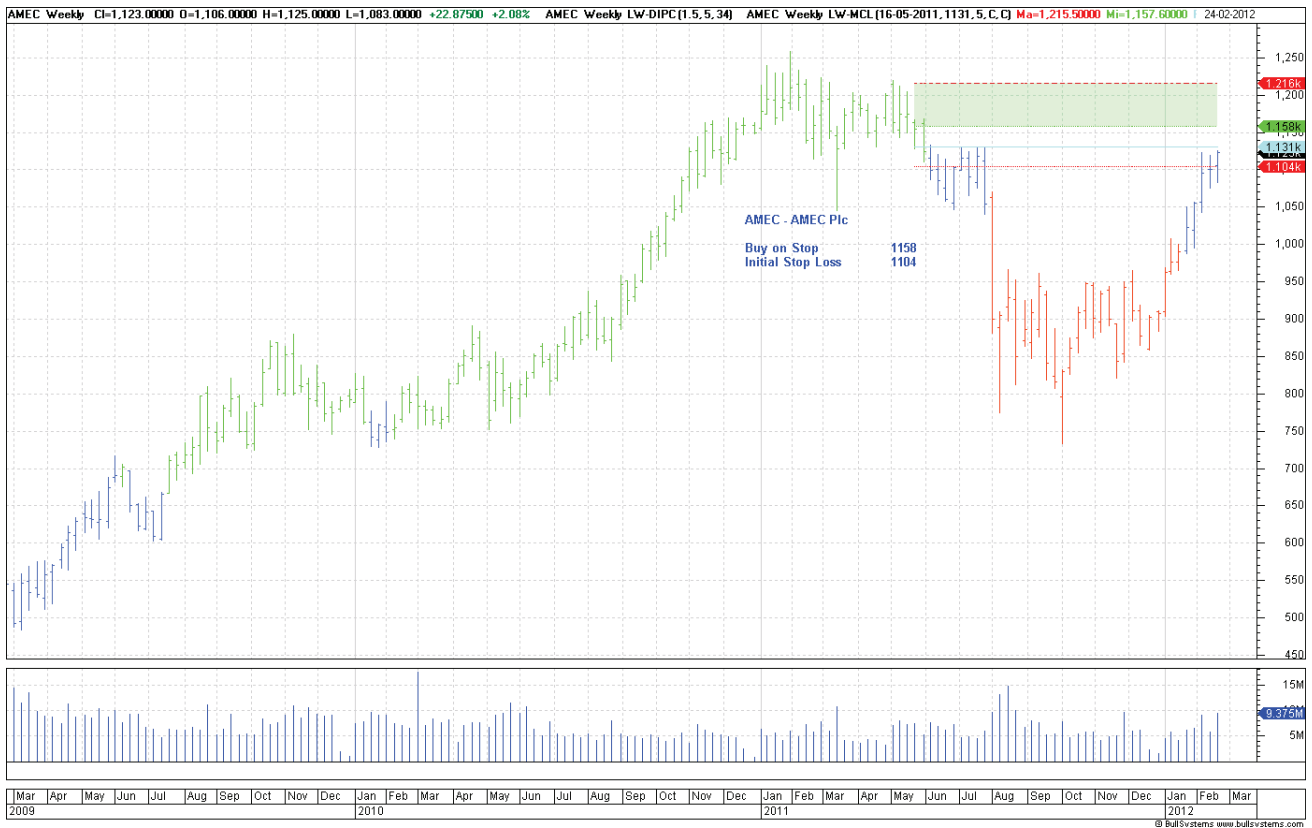
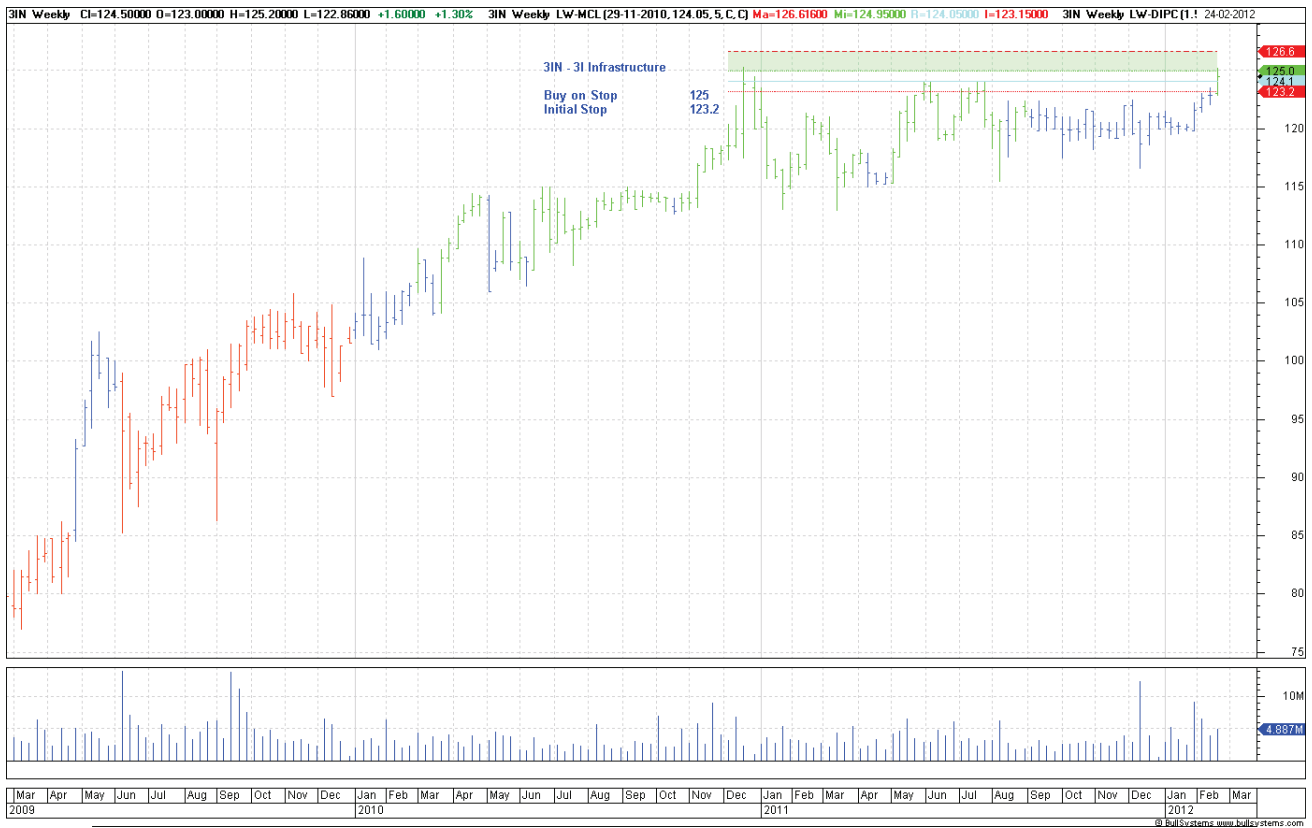
Retained

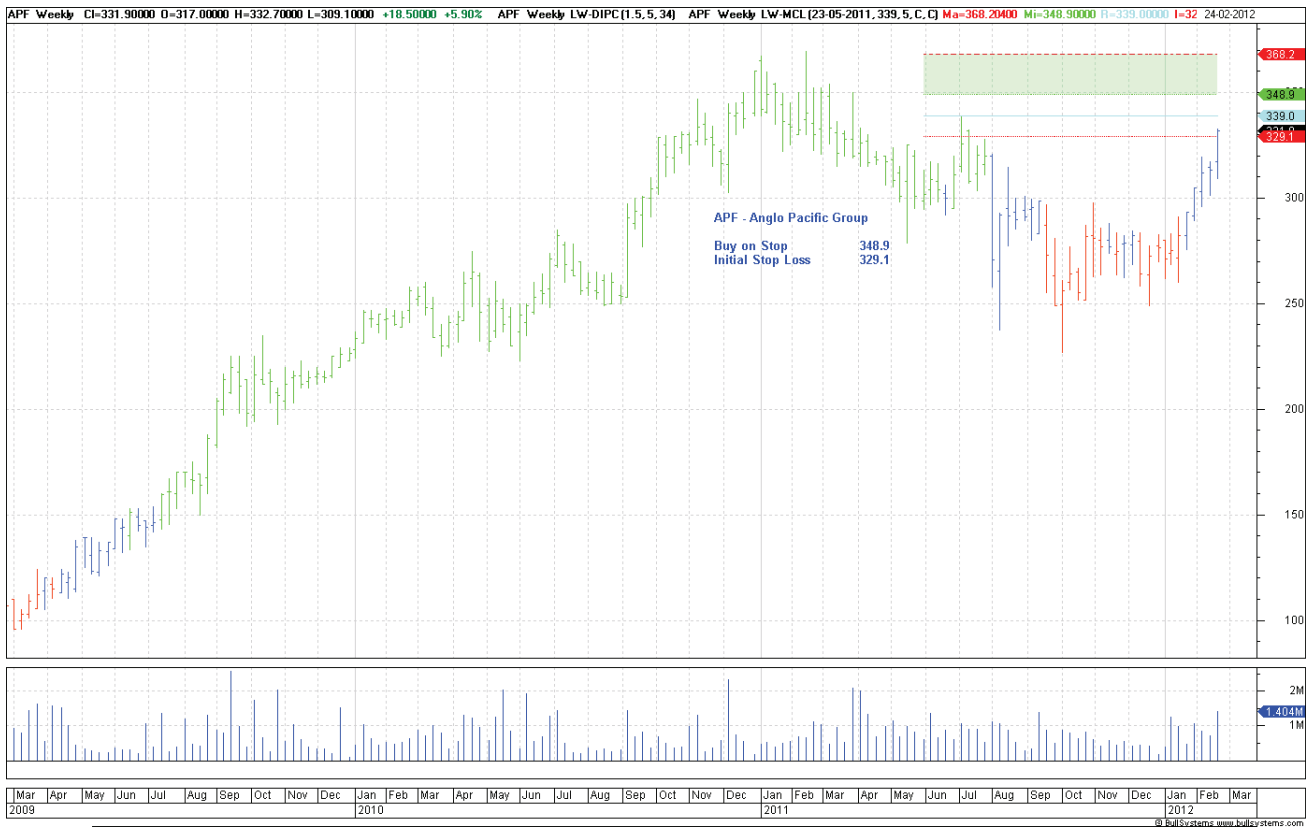
Nil

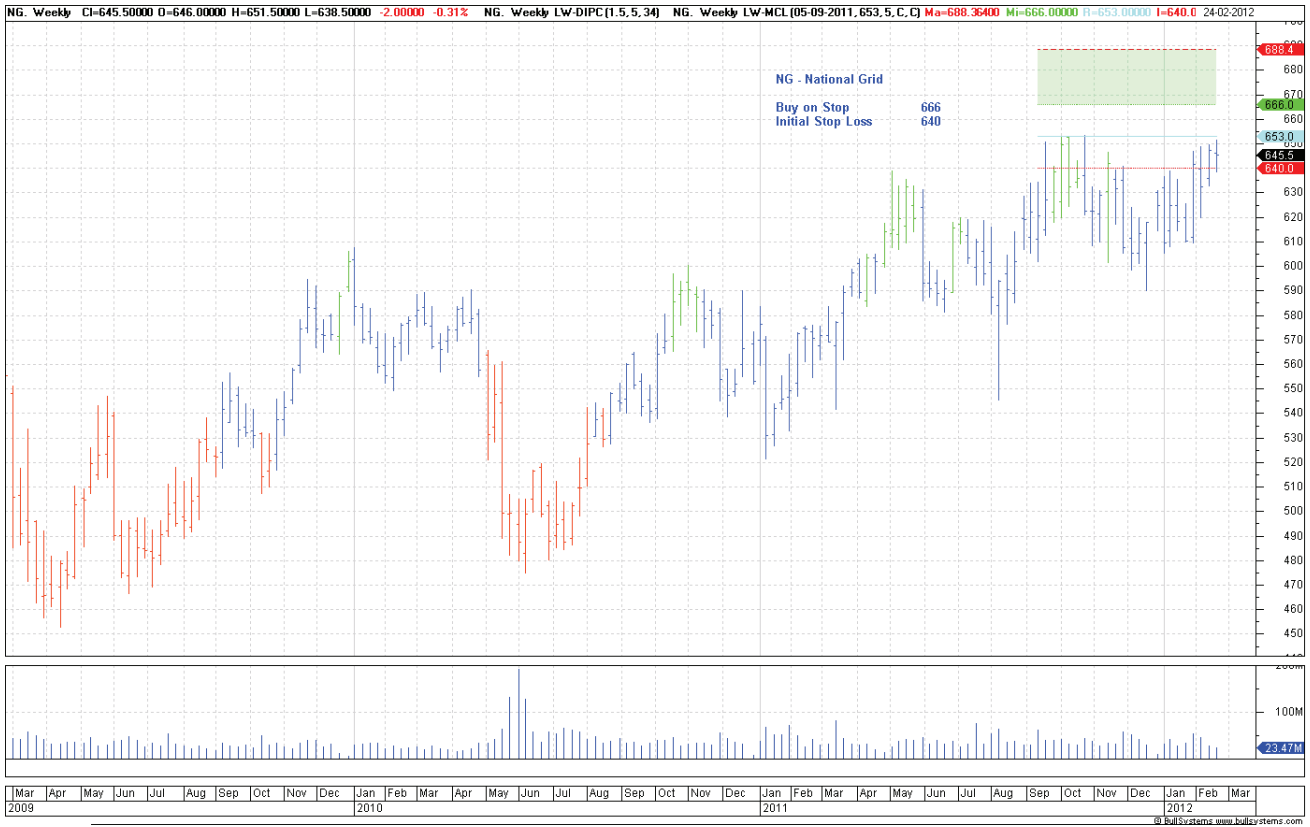
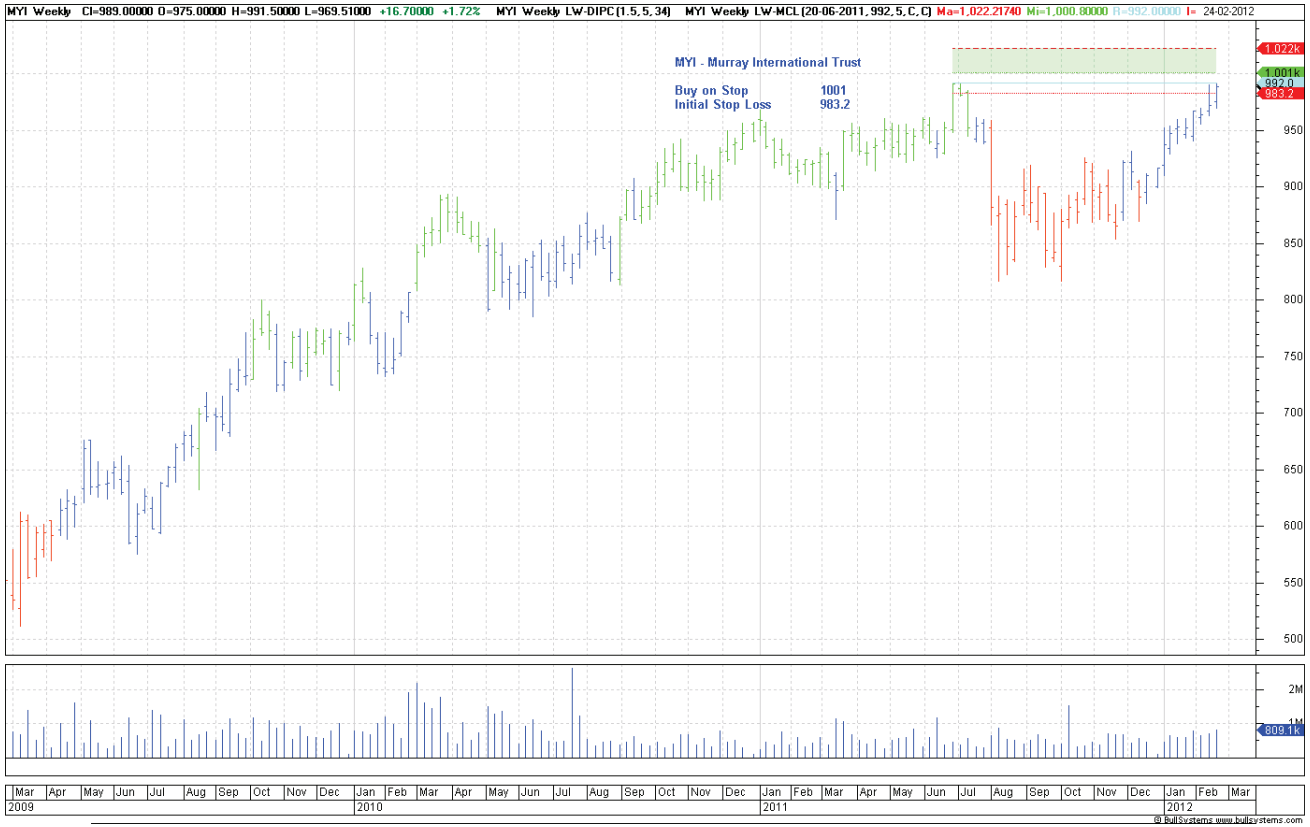
NEW

3I Infrastructure	3IN	Buy	125	123.2
AMEC Plc	AMEC	Buy	1158	1104
Anglo Pacific	APF	Buy	348.9	329.1
Murray Investment Trust	MYI	Buy	1001	983.2

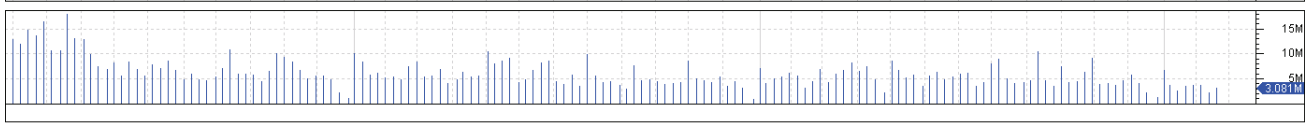
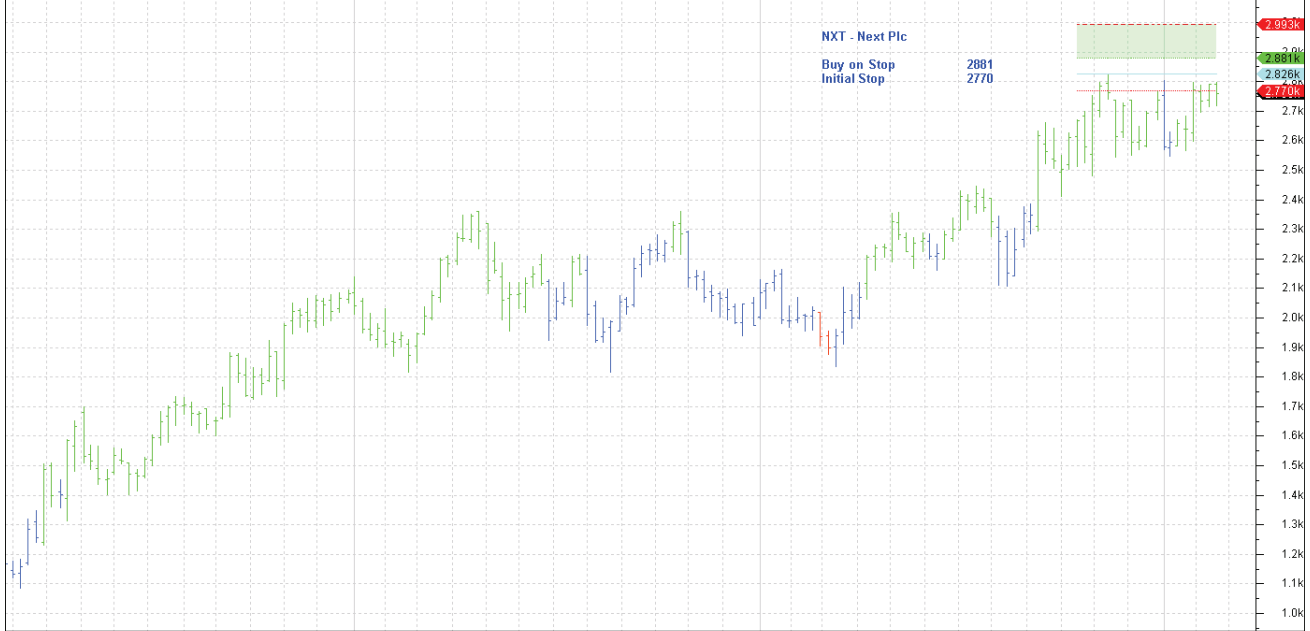
Charts







NXT Weekly CI=2,760.0000 O=2,791.0000 H=2,797.0000 L=2,720.0000 -30.3600 -1.09% NXT Weekly LW-DIPC(1.5,5,34) NXT Weekly LW-MCL(10-10-2011,2825.63,5,C,C) Ma=2,992.77400 M=2,880.77400 TI=7 24-02-2012



Year	Month
2009	Mar
	Apr
	May
2010	Jun
	Jul
	Aug
2011	Sep
	Oct
	Nov
2012	Dec
	Jan
	Feb
2012	Mar