

Hello everyone,

The UK markets have been settling a little over the last few weeks and there are a number of companies building towards breakouts, these should start over the next month or so. We are keeping a watch on these and will advise accordingly.

This is the first week we have published recommendations for the London Stock Exchange, and there are a few recommendations that we feel need publishing.

Have a great week all

Entries: Nil

Exits: Nil

The colour coding we are currently using is as follows:

Amended orders or stops

Retained Orders or stops – no change

New working orders

Immediate action required

Short Sell

## Open Positions

---

Stops:	Old	Action	New
--------	-----	--------	-----

### Amended

Nil

### Retained

Nil

### Cancelled Orders

Nil

### Working Orders

Company	Code	Direction	Entry	Stop
---------	------	-----------	-------	------

### Amended

Nil

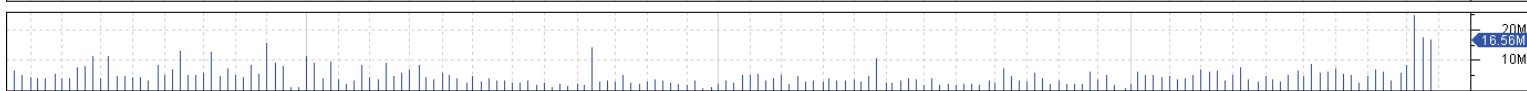
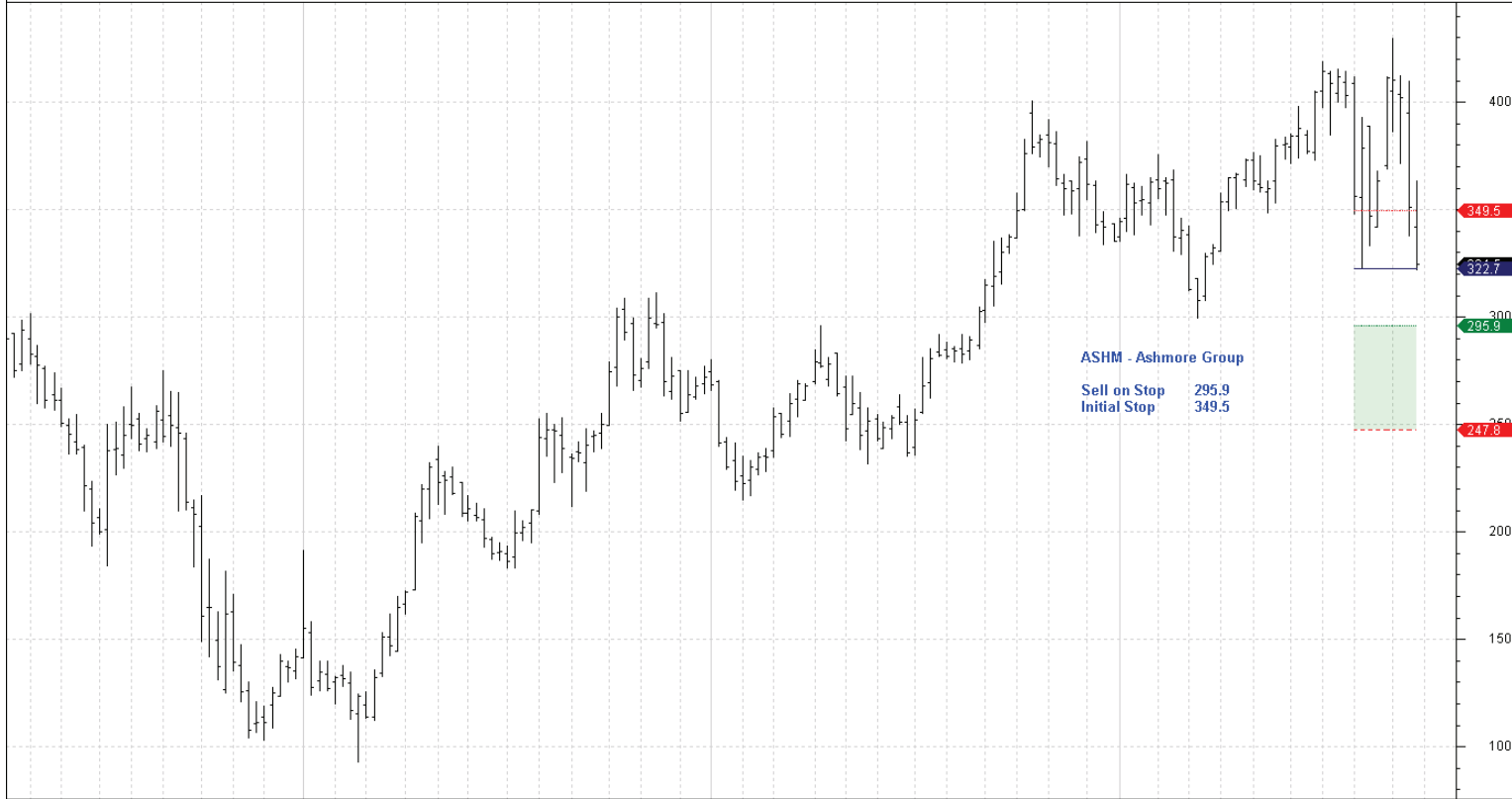
## **Retained**

Nil

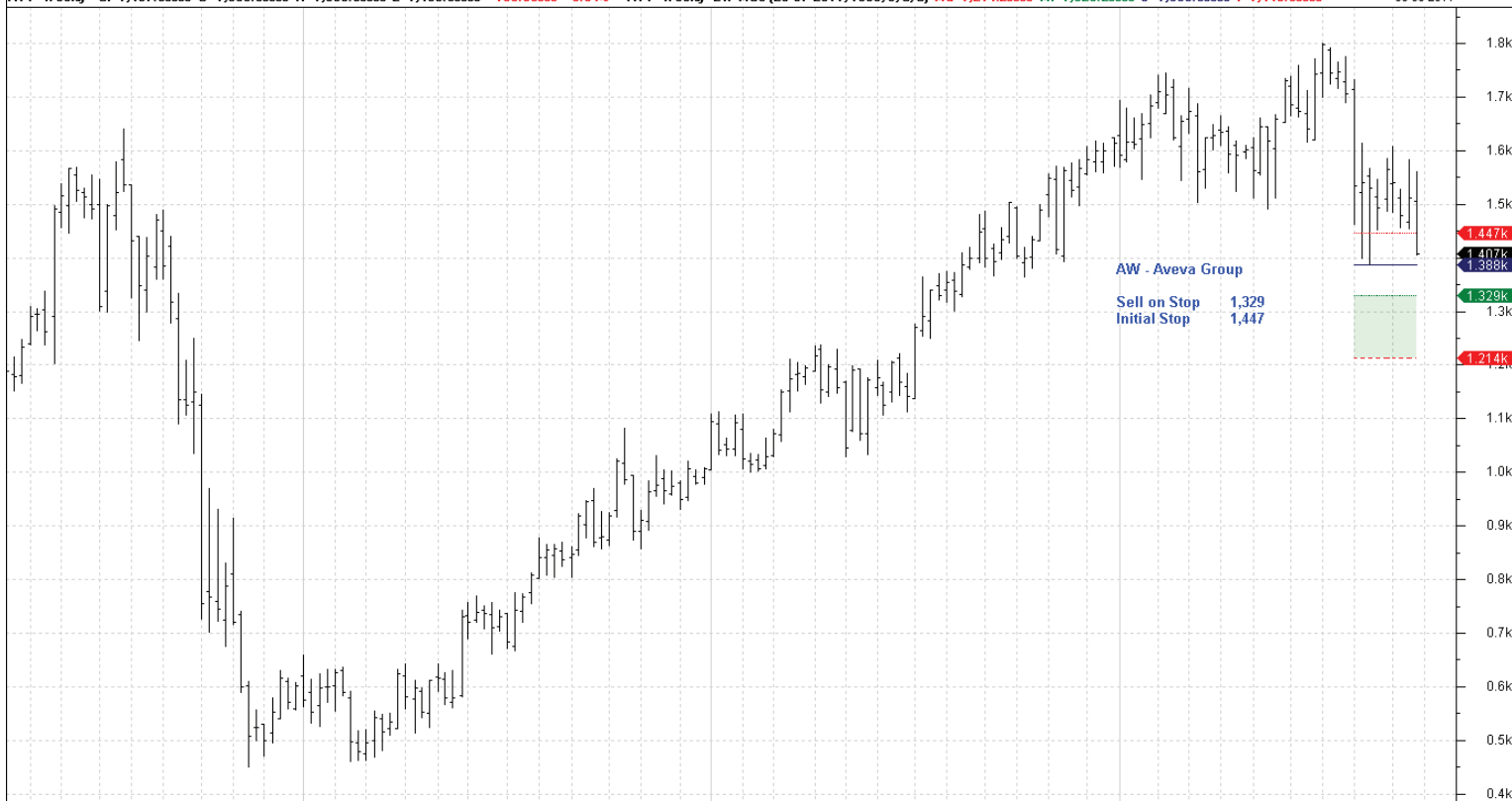
Company	Code	Direction	Entry	Stop
---------	------	-----------	-------	------

## **New**

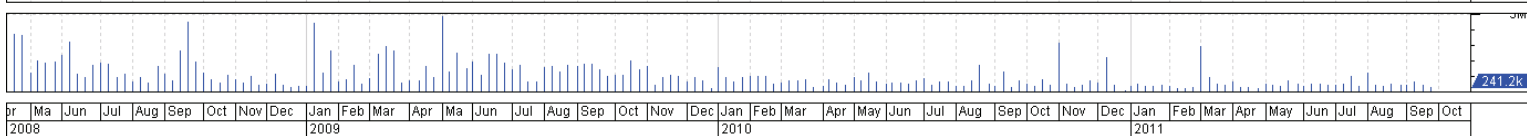
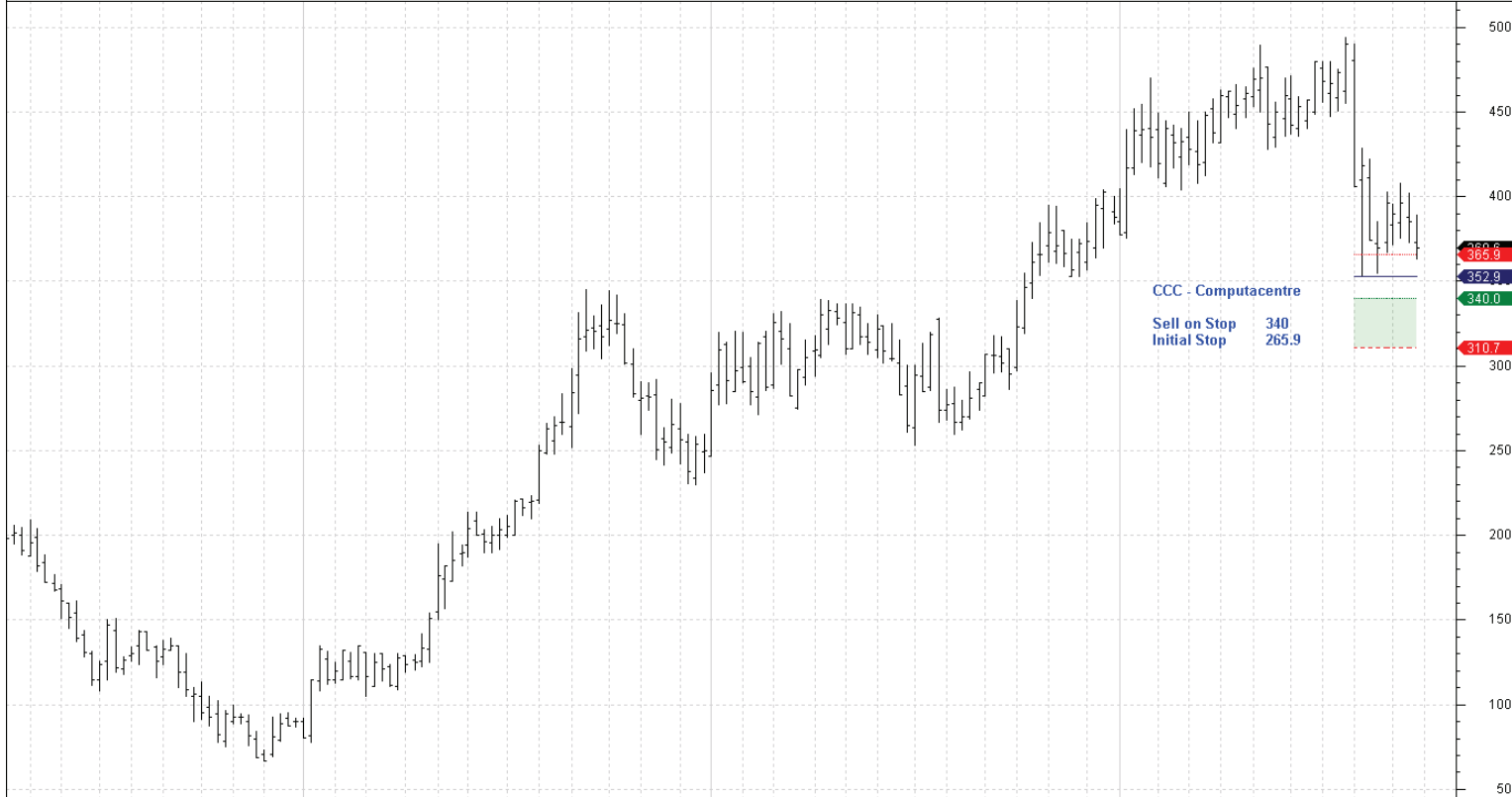
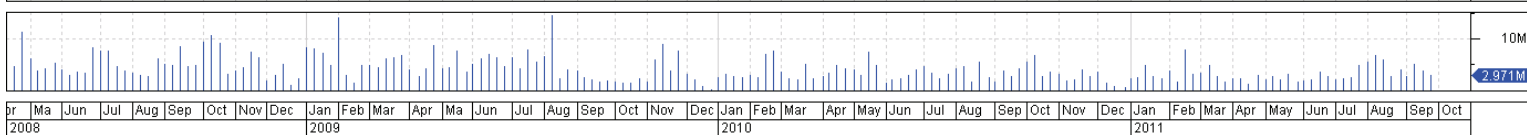
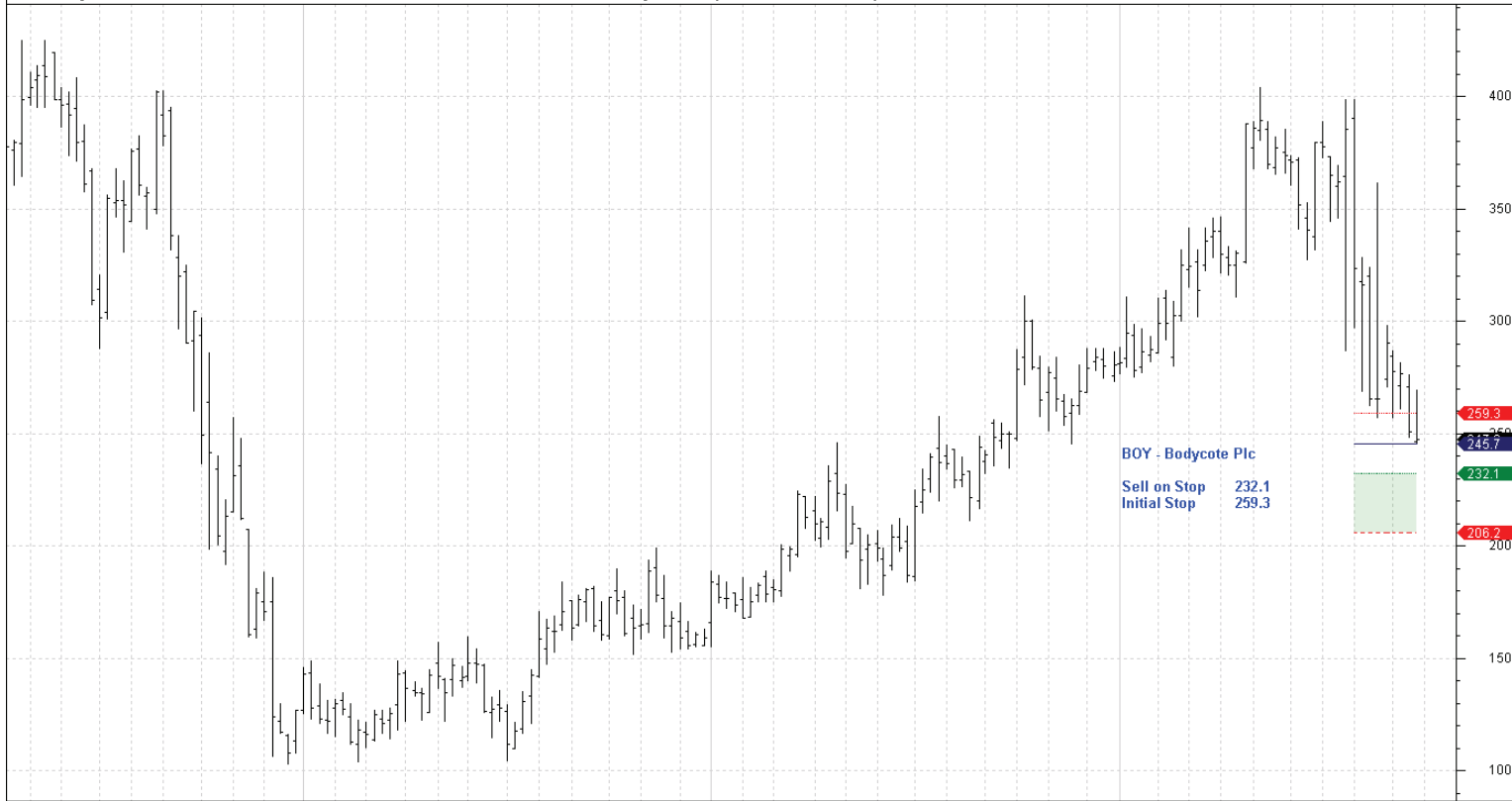
Ashmore Group	ASHM	Sell	295.9	349.5
Aveva Group	AW	Sell	1329	1447
Bodycote	BOY	Sell	232.1	259.3
Computacentre	CCC	Sell	340	365.9
Dexion Absolute	DAB	Sell	131.6	136.8
Dunelm Group	DNLM	Buy	503.5	475.9
Electra Private Equity	ELTA	Sell	1253	1321
Great Portland Estates	GPOR	Sell	318	354
Herald Investment	HRI	Sell	413.3	432.7
ITE Group	ITE	Sell	148.6	167.6



br Ma Jun Jul Aug Sep Oct Nov Dec Jan Feb Mar Apr Ma Jun Jul Aug Sep Oct Nov Dec Jan Feb Mar Apr May Jun Jul Aug Sep Oct  
2008 2009 2010 2011



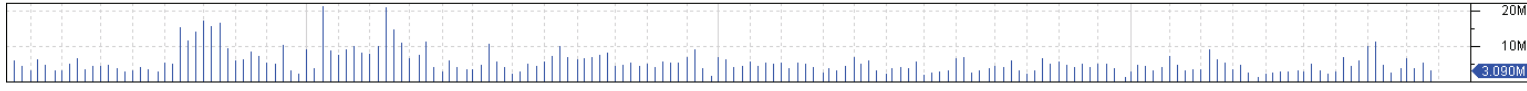
br Ma Jun Jul Aug Sep Oct Nov Dec Jan Feb Mar Apr Ma Jun Jul Aug Sep Oct Nov Dec Jan Feb Mar Apr May Jun Jul Aug Sep Oct  
2008 2009 2010 2011



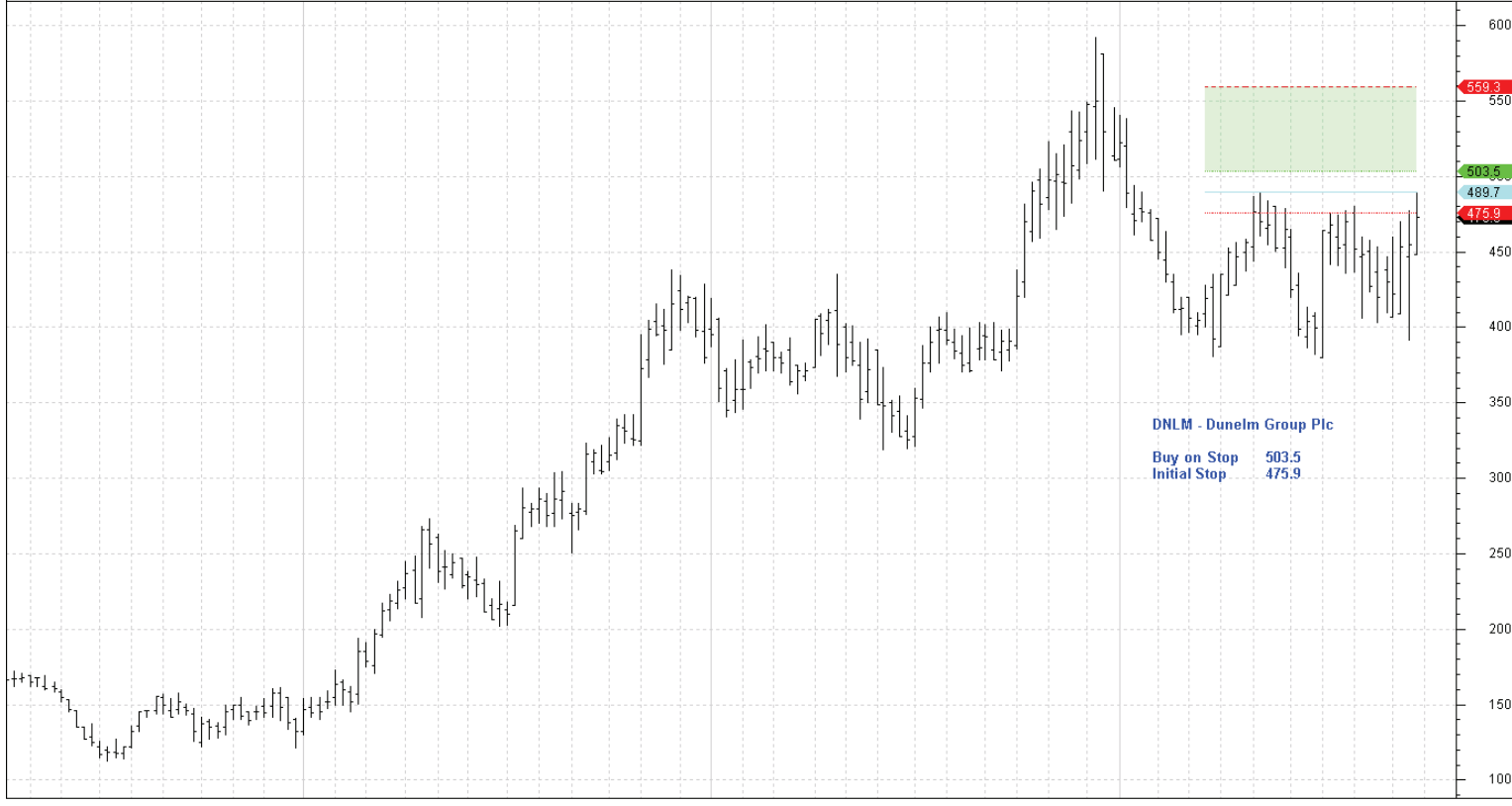


DAB - Dexion Absolute  
 Sell on Stop 127.1  
 Initial Stop 136.8

136.8  
 134.2  
 131.6  
 127.1

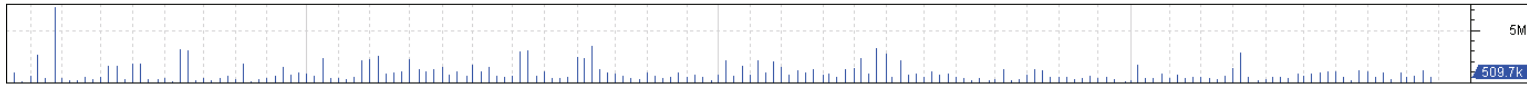


pr | Ma | Jun | Jul | Aug | Sep | Oct | Nov | Dec | Jan | Feb | Mar | Apr | Ma | Jun | Jul | Aug | Sep | Oct | Nov | Dec | Jan | Feb | Mar | Apr | May | Jun | Jul | Aug | Sep | Oct | 2008 | 2009 | 2010 | 2011

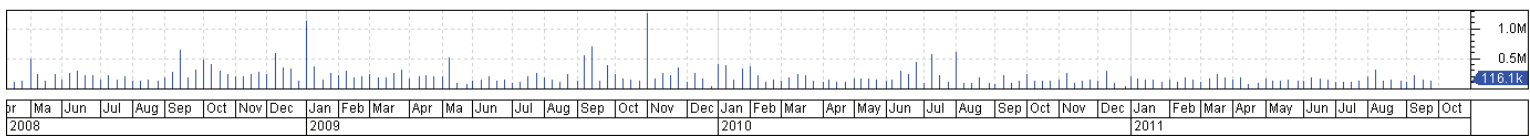


DNLM - Dunelm Group Plc  
 Buy on Stop 503.5  
 Initial Stop 475.9

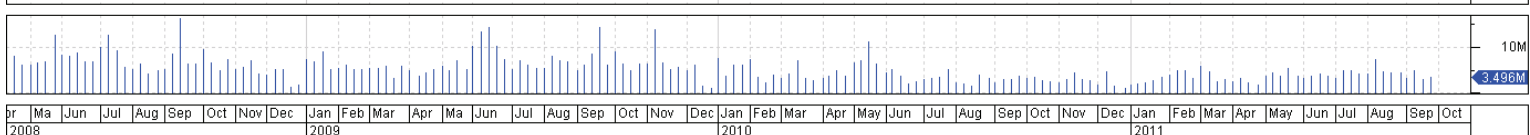
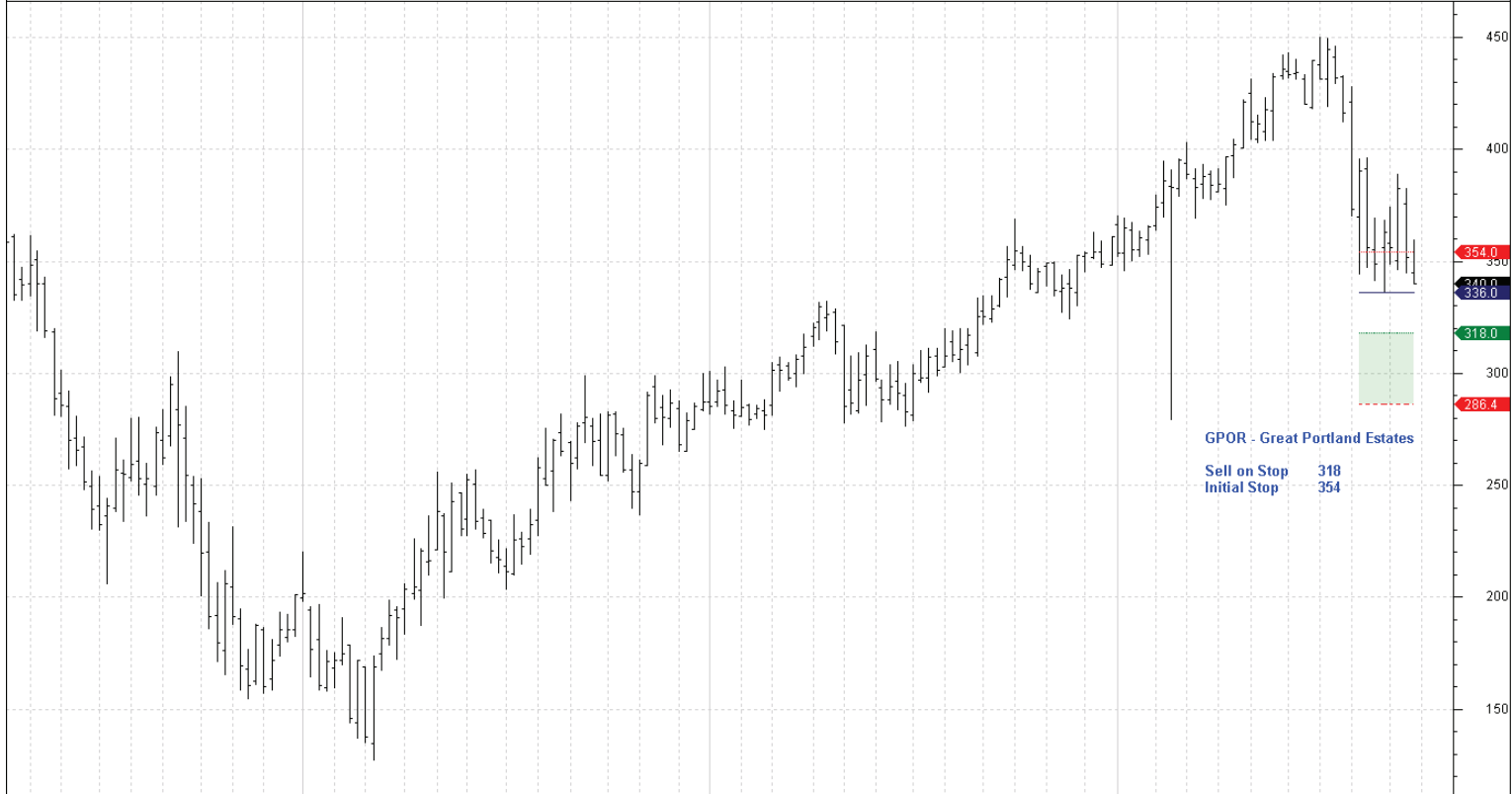
503.5  
 489.7  
 475.9



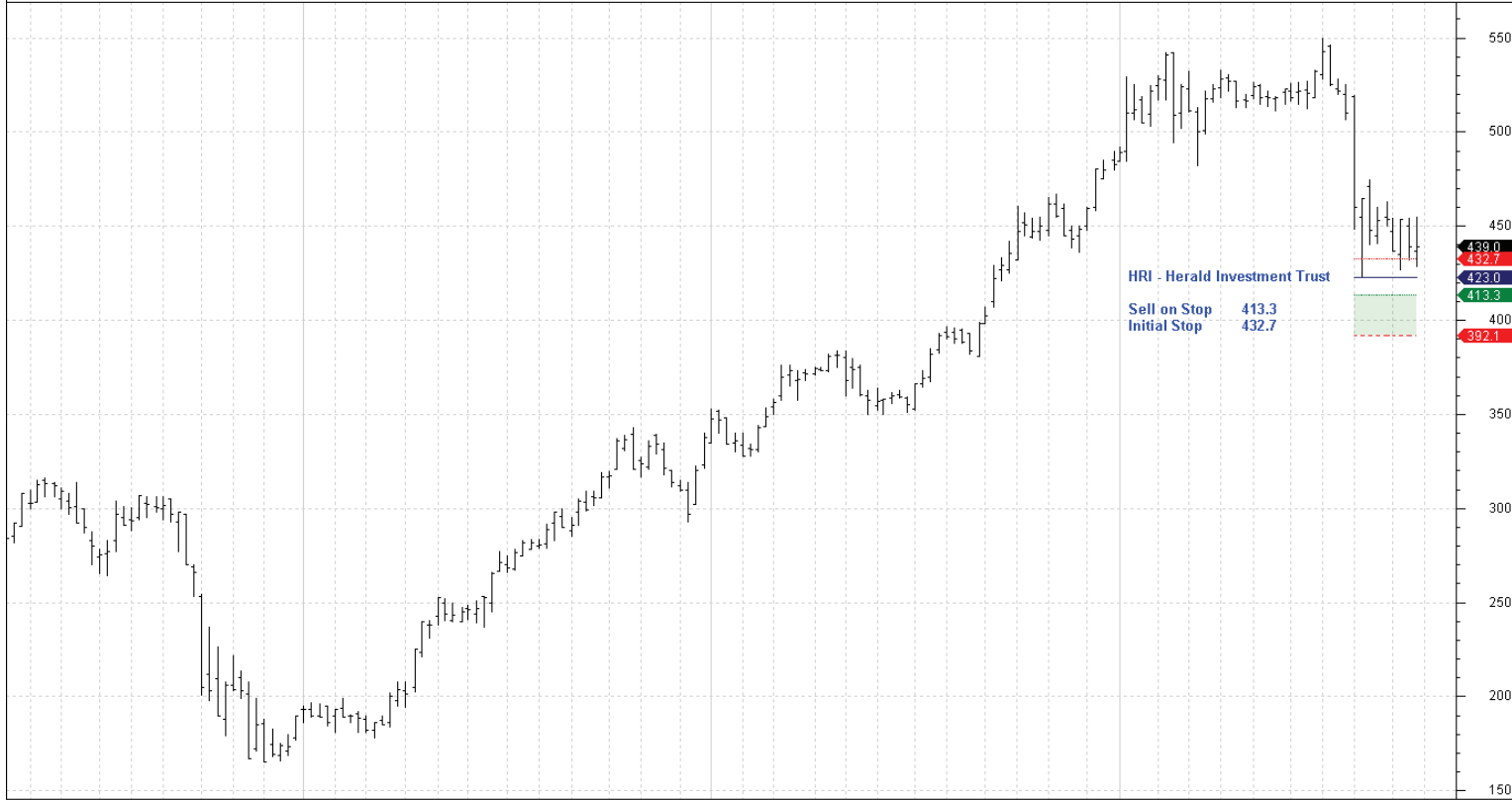
pr | Ma | Jun | Jul | Aug | Sep | Oct | Nov | Dec | Jan | Feb | Mar | Apr | Ma | Jun | Jul | Aug | Sep | Oct | Nov | Dec | Jan | Feb | Mar | Apr | May | Jun | Jul | Aug | Sep | Oct | 2008 | 2009 | 2010 | 2011



pr Ma Jun Jul Aug Sep Oct Nov Dec Jan Feb Mar Apr Ma Jun Jul Aug Sep Oct Nov Dec Jan Feb Mar Apr May Jun Jul Aug Sep Oct  
 2008 2009 2010 2011

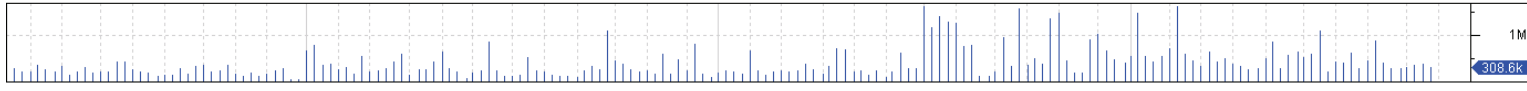


pr Ma Jun Jul Aug Sep Oct Nov Dec Jan Feb Mar Apr Ma Jun Jul Aug Sep Oct Nov Dec Jan Feb Mar Apr May Jun Jul Aug Sep Oct  
 2008 2009 2010 2011

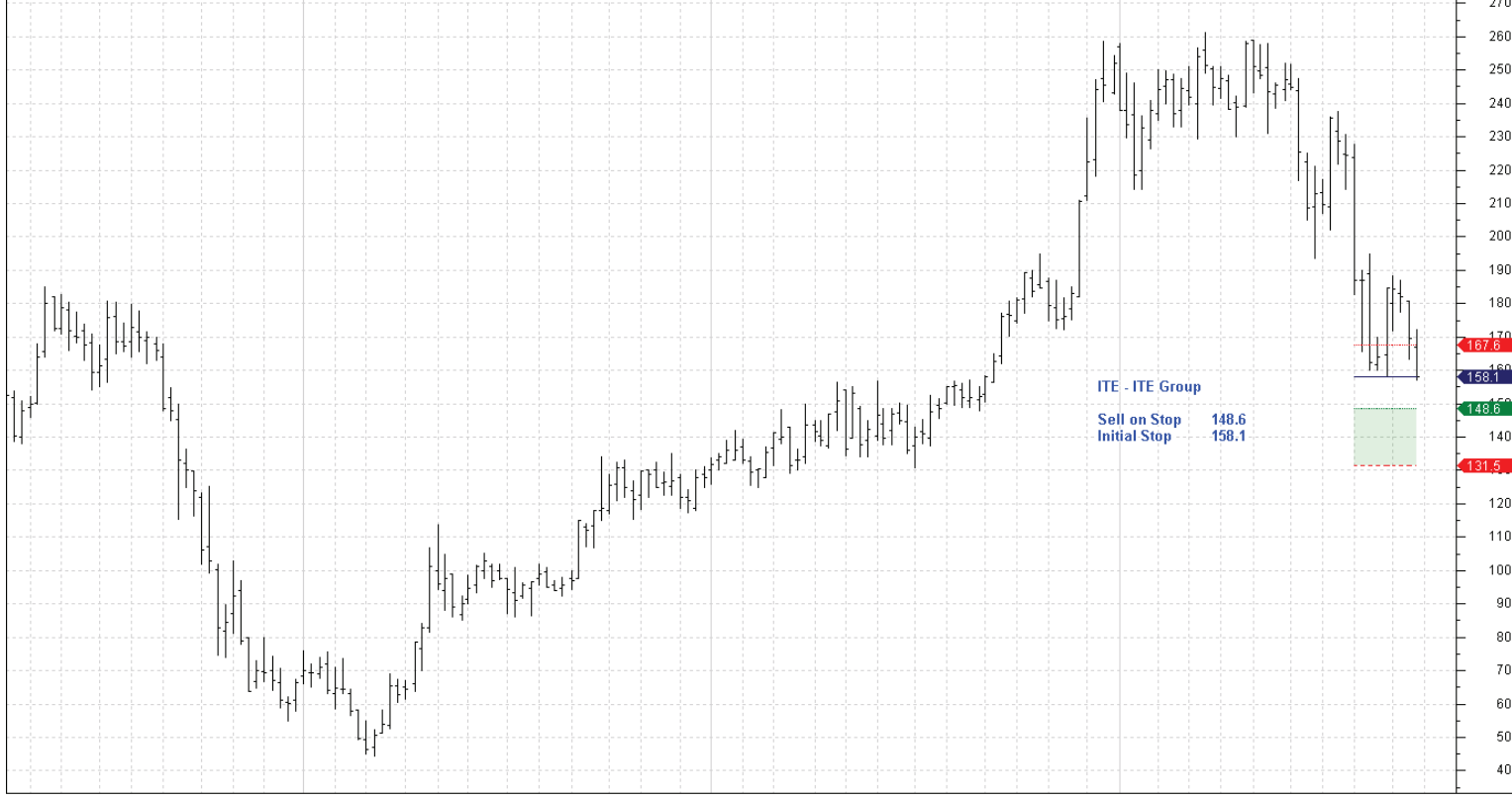


HRI - Herald Investment Trust  
 Sell on Stop 413.3  
 Initial Stop 432.7

439.0  
 432.7  
 423.0  
 413.3  
 400  
 392.1

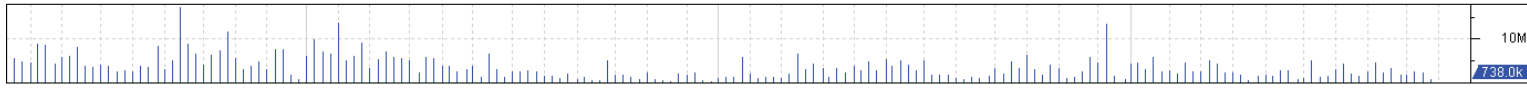


pr | Ma | Jun | Jul | Aug | Sep | Oct | Nov | Dec | Jan | Feb | Mar | Apr | Ma | Jun | Jul | Aug | Sep | Oct | Nov | Dec | Jan | Feb | Mar | Apr | May | Jun | Jul | Aug | Sep | Oct |  
 2008 | 2009 | 2010 | 2011



ITE - ITE Group  
 Sell on Stop 148.6  
 Initial Stop 158.1

167.6  
 158.1  
 148.6  
 131.5



pr | Ma | Jun | Jul | Aug | Sep | Oct | Nov | Dec | Jan | Feb | Mar | Apr | Ma | Jun | Jul | Aug | Sep | Oct | Nov | Dec | Jan | Feb | Mar | Apr | May | Jun | Jul | Aug | Sep | Oct |  
 2008 | 2009 | 2010 | 2011