

## Week Ending 8<sup>th</sup> June 2012

All markets had a tumultuous week however a number of new potential opportunities have emerged. 1 entry and 1 exit from last week.

Have a great week

### London Stock Exchange

### Currency – British Pence

Entries: Halfords

Exits: De La Rue

The colour coding we are currently using is as follows:

Amended orders or stops

Retained Orders or stops – no change

New working orders

Immediate action required

Short Sell

### Open Positions

---

Stops:	Code	Old	Action	New
--------	------	-----	--------	-----

### Amended

### Retained

Halfords	HFD	276.4	Retain	276.4
Intrinsic Value	ITV	84.07	Retain	84.07

## Working Orders

Company Code Direction Entry Stop

## Cancelled Orders

## Amended

Associated British Foods	ABF	Sell	1152	1186
Chemring Group	CHG	Sell	302.2	321.2
Derwent London Group	DLN	Buy	1834	1744
Hammersons	HMSO	Buy	444.6	416.4
Home Retail Group	HOME	Sell	65.18	80.82
Laird	LRD	Sell	172	186.8
Next	NXT	Buy	3081	2983

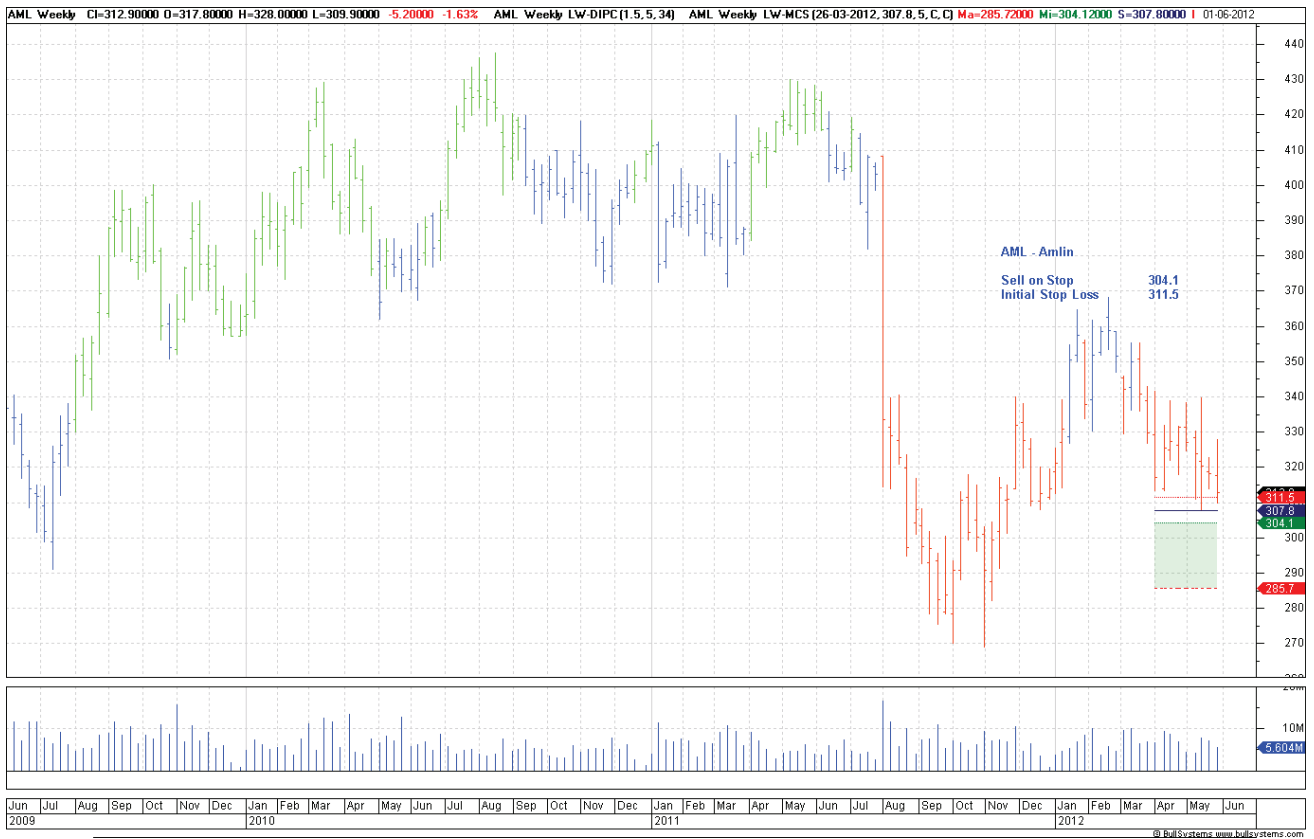
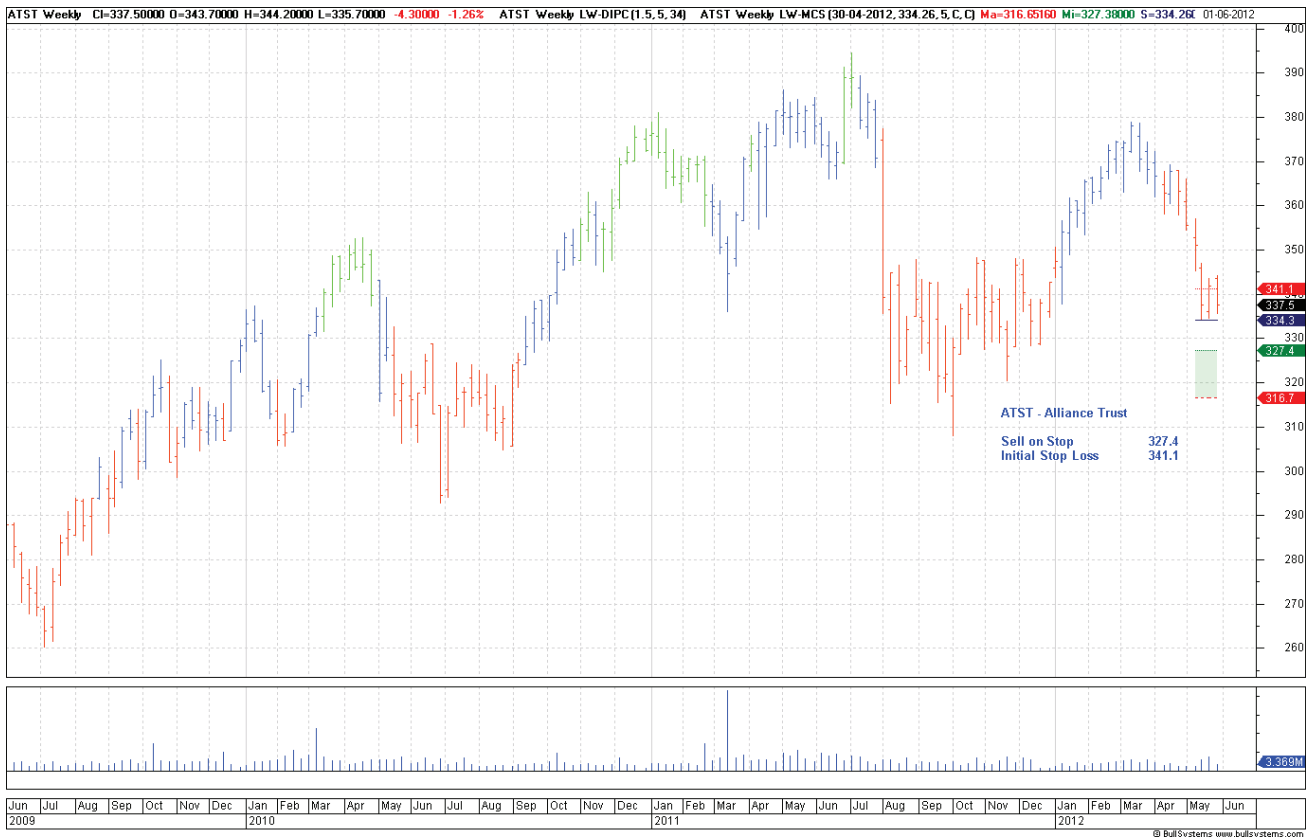
## Retained

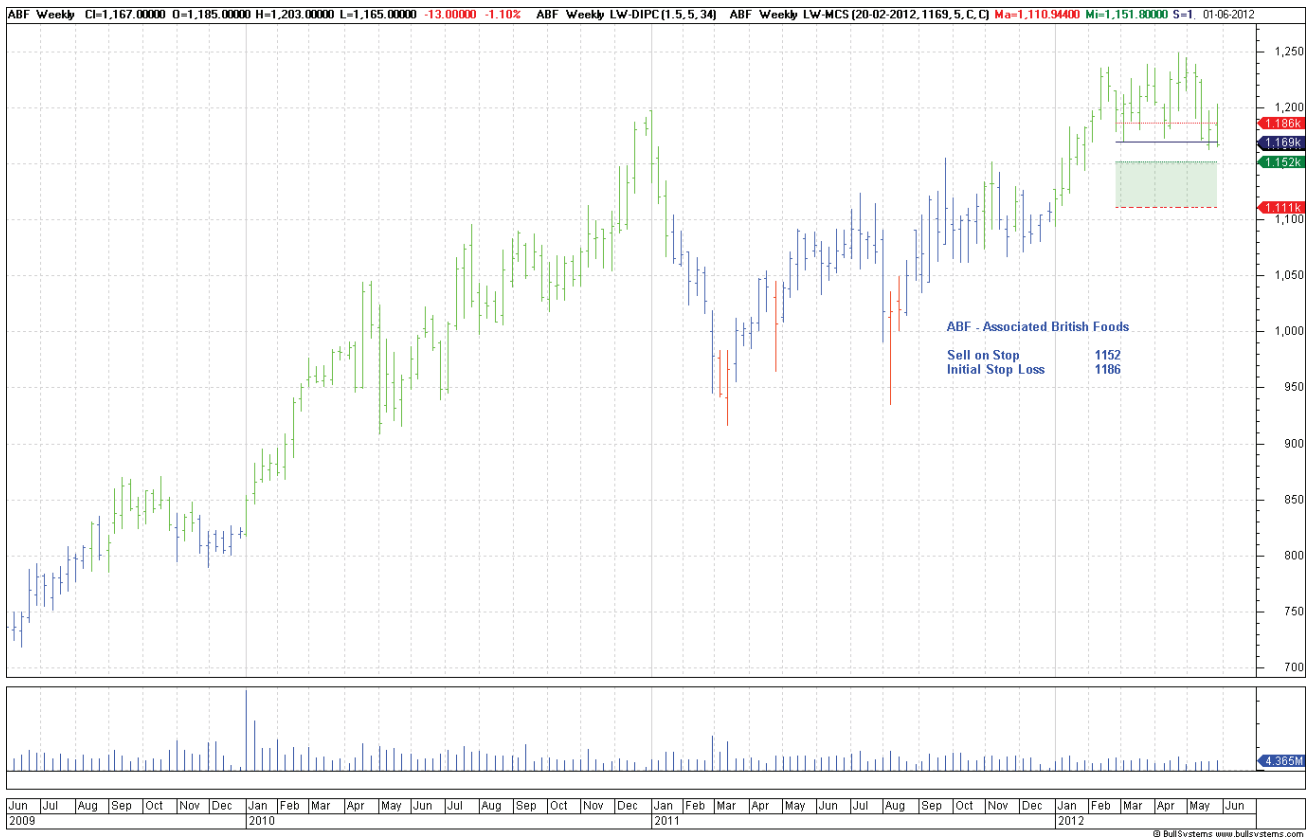
Kofax	KFX	Sell	230	255.4
-------	-----	------	-----	-------

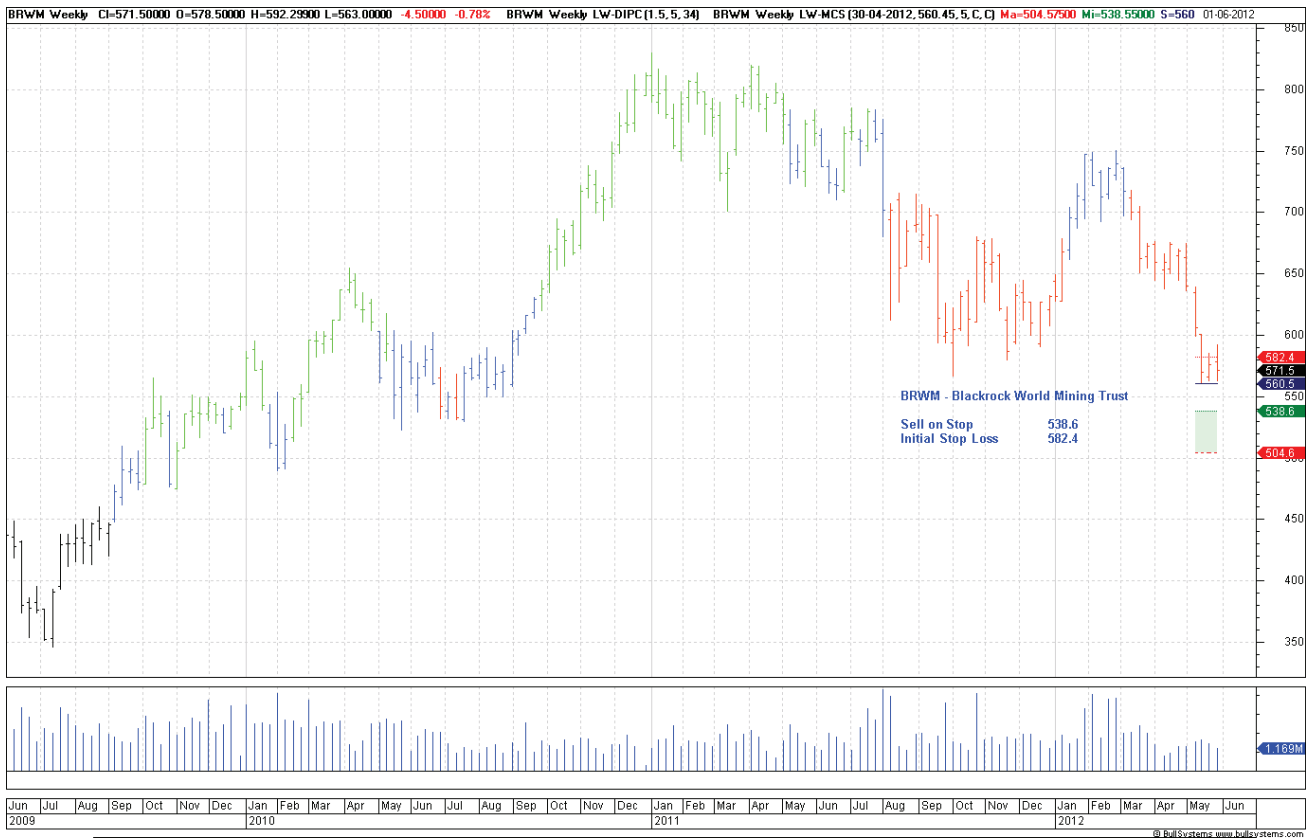
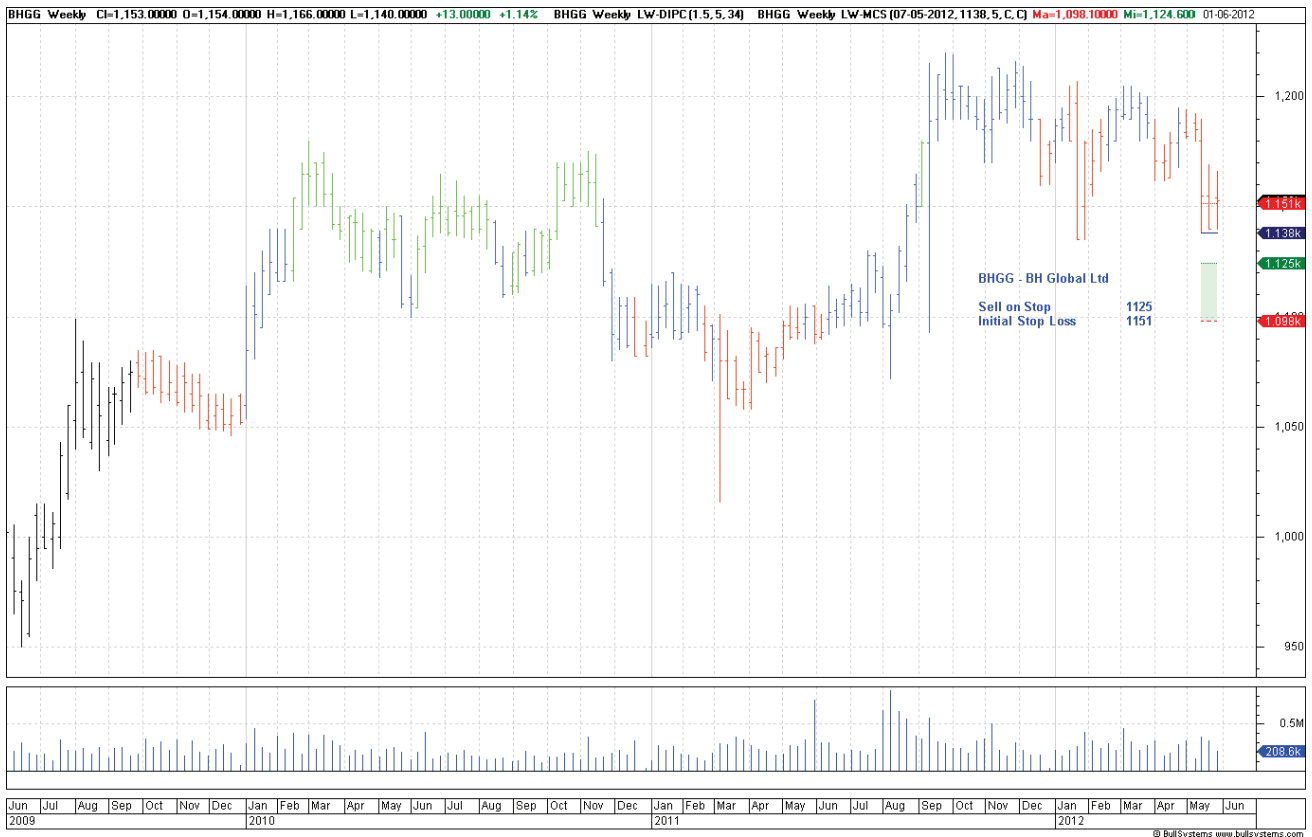
## NEW

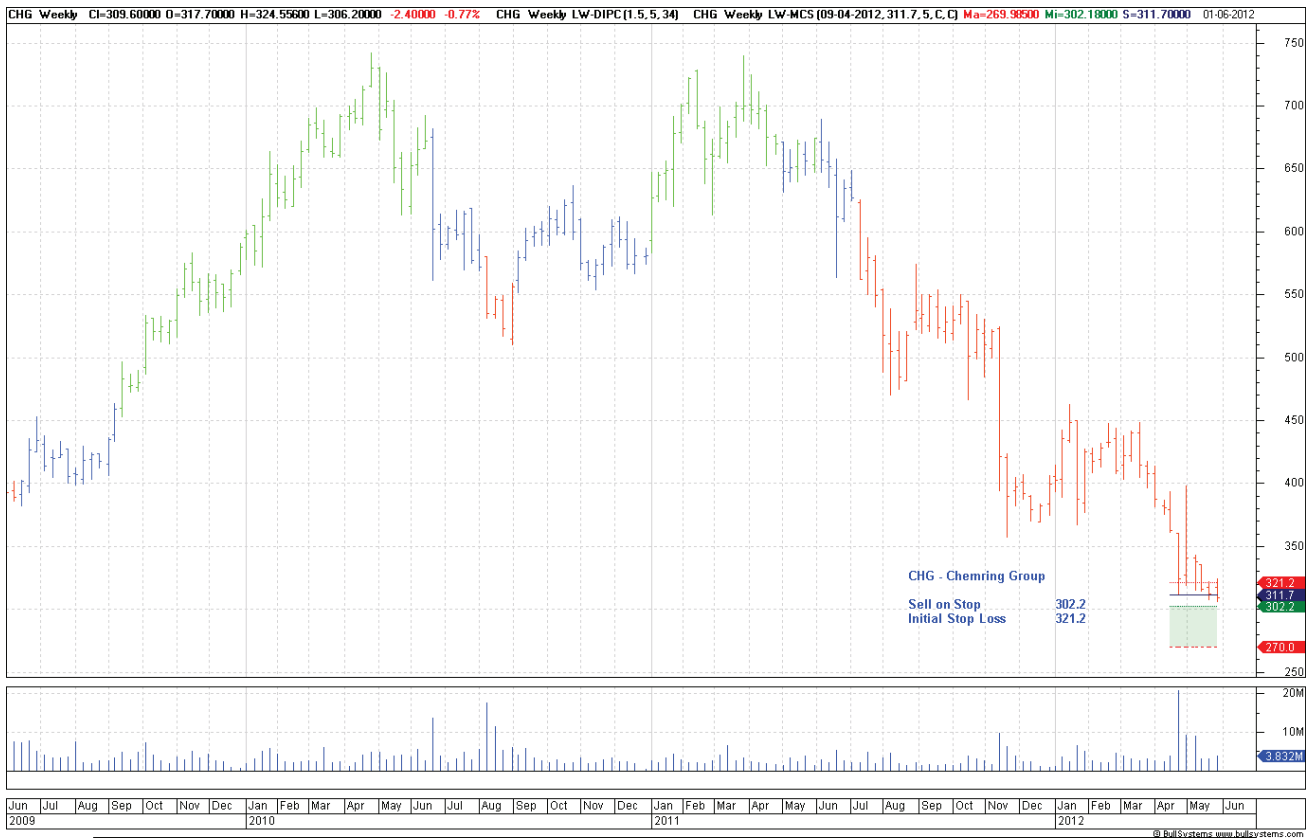
Alliance Trust	ATST	Sell	327.4	341.1
Amlin	AML	Sell	304.1	311.5
BAE Systems	BAE	Sell	262	275.4
BH Global	BHGG	Sell	1125	1151
Blackrock World Mining	BRWM	Sell	538.6	582.4
Carnival	CCL	Buy	2142	2038
Fidelity European Values	FEV	Sell	969.4	1015
Henderson Group	HGG	Sell	86.03	99.07
Reckitt Benckiser Group	RB	Sell	3310	3428

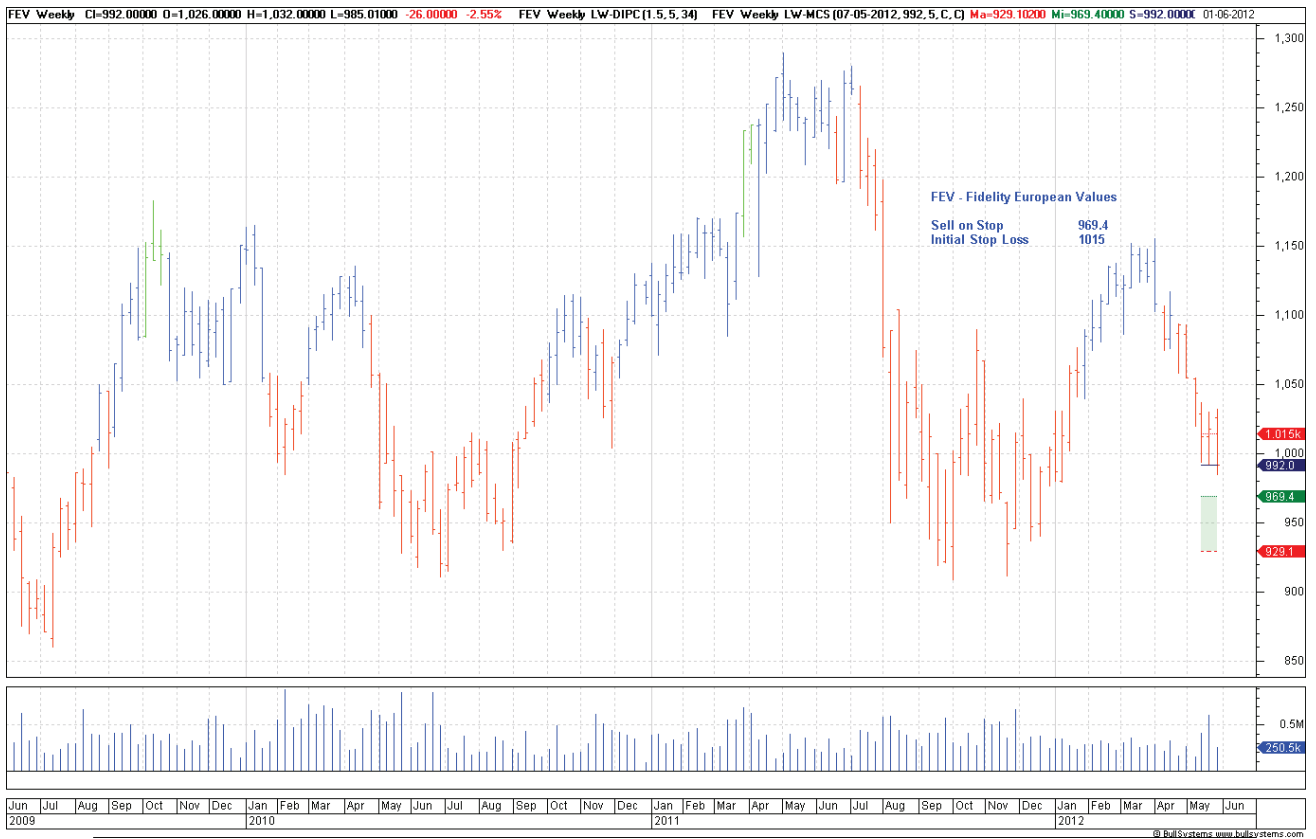
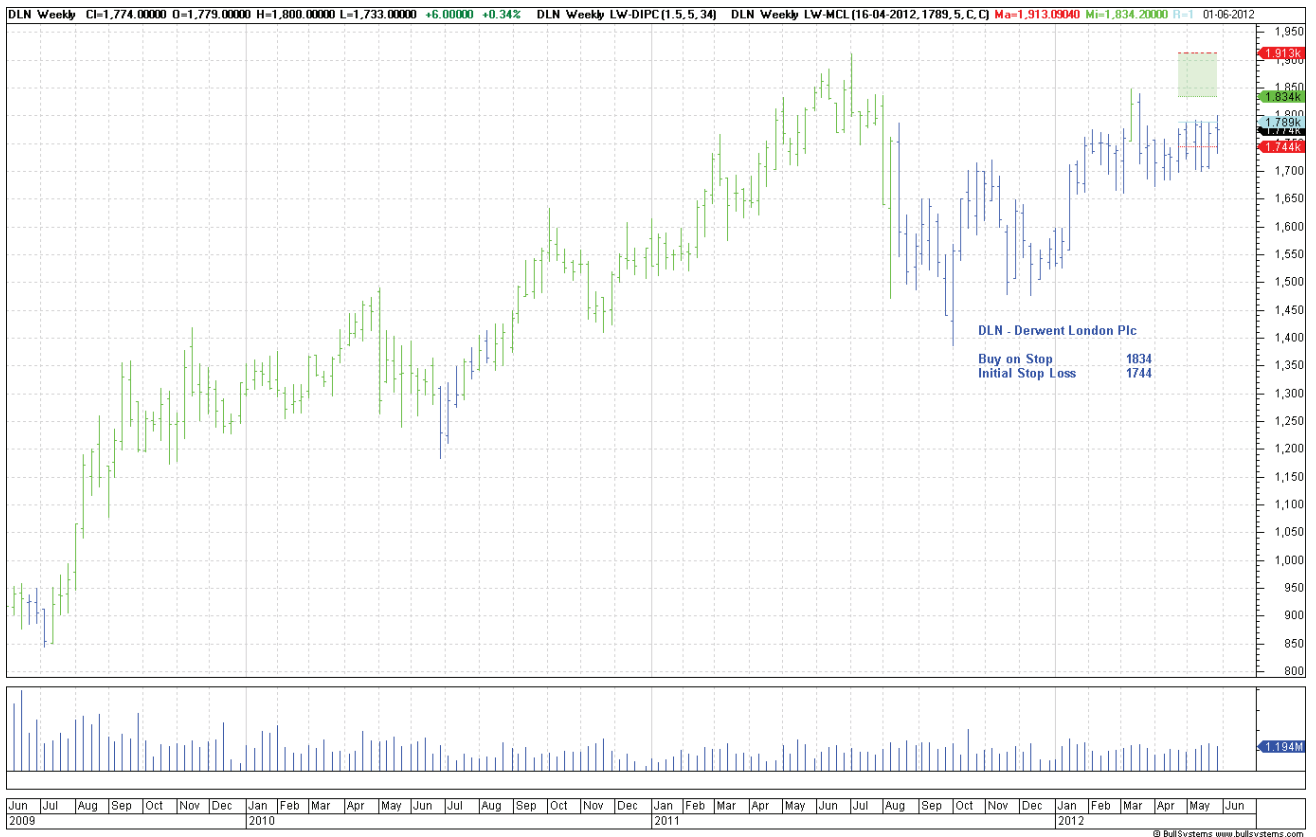
## Charts

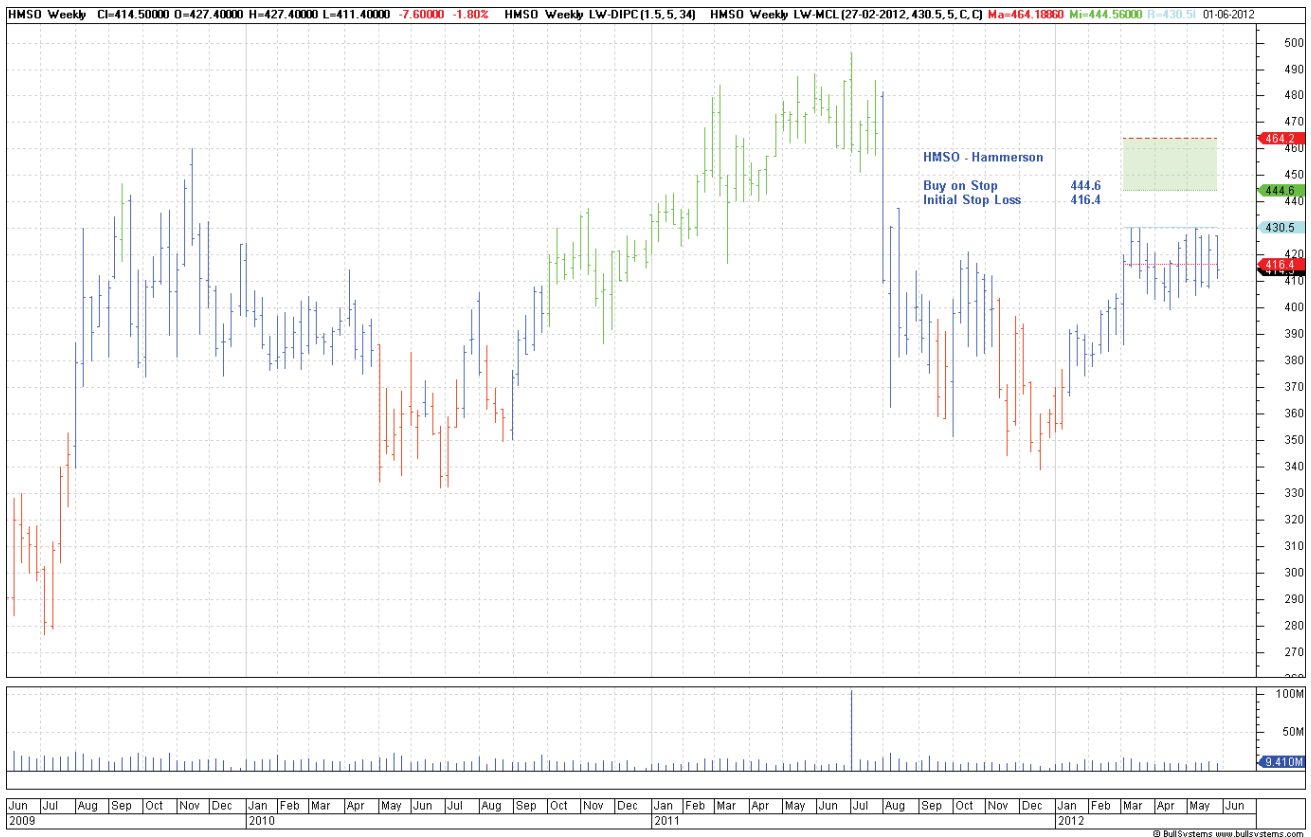










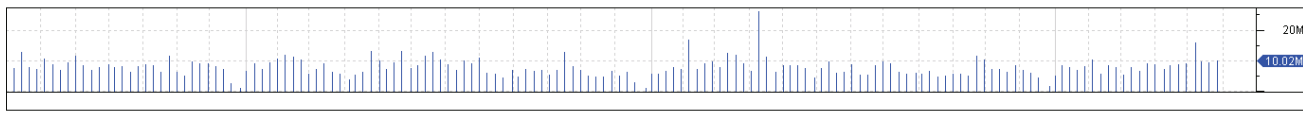
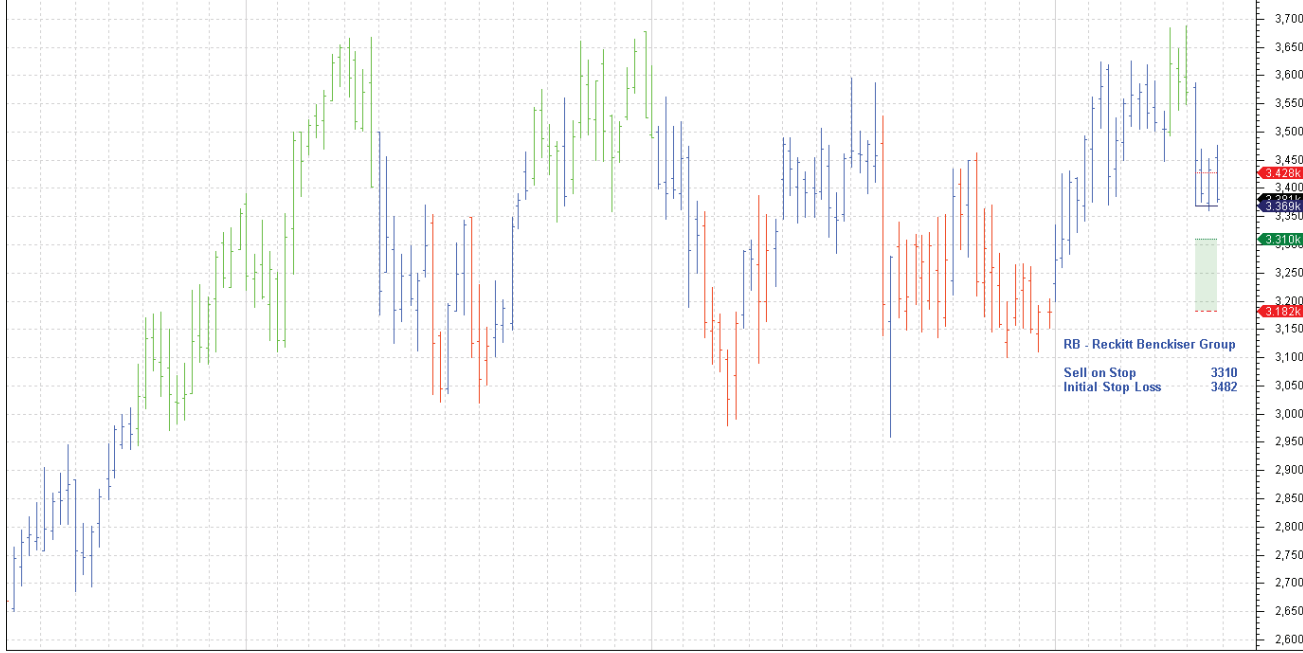








RB. Weekly CI=3.381.0000 O=3.455.0000 H=3.477.0000 L=3.376.0000 -52.0000 -1.51% RB. Weekly LW-DIPC(1.5, 5, 34) RB. Weekly LW-MCS(30-04-2012, 3369, 5, C, C) Ma=3.181.7780 Mi=3.310.2000 S=3.3 01-06-2012



Jun Jul Aug Sep Oct Nov Dec 2009 Jan Feb Mar Apr May Jun Jul Aug Sep Oct Nov Dec 2010 Jan Feb Mar Apr May Jun Jul Aug Sep Oct Nov Dec 2011 Jan Feb Mar Apr May Jun Jul Aug Sep Oct Nov Dec 2012