

Hello everyone,

The UK markets have continued to settle the last few weeks and there are a number of companies building towards breakouts, these should start over the next month or so. We are keeping a watch on these and will advise accordingly.

We had companies trigger their entry points this week on the LSE – London Stock Exchange

Have a great week all

Entries: Ashmore Group, Aveva Group, Bodycote, Dexion & Great Portland Estates

Exits: Nil

The colour coding we are currently using is as follows:

Amended orders or stops

Retained Orders or stops – no change

New working orders

Immediate action required

Short Sell

## Open Positions

---

Stops:	Old	Action	New
--------	-----	--------	-----

### Amended

Nil

### Retained

Ashmore Group	349.5	Retain	349.5
Aveva Group	1447	Retain	1447
Bodycote	259.3	Retain	259.3
Dexion Absolute	136.8	Retain	136.5
Great Portland Estates	354	Retain	354

## Cancelled Orders

Nil

## Working Orders

Company	Code	Direction	Entry	Stop
---------	------	-----------	-------	------

## Amended

Computacentre	CCC	Sell	343.9	361.9
Dunelm Group	DNLM	Buy	505.9	473.5
Electra Private Equity	ELTA	Sell	125	1324
Herald Investment	HRI	Sell	413.4	432.6
ITE Group	ITE	Sell	148.6	167.6

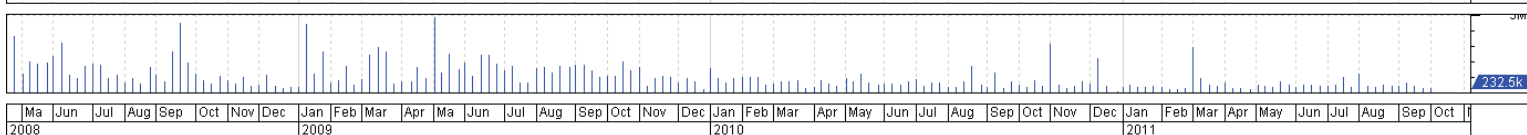
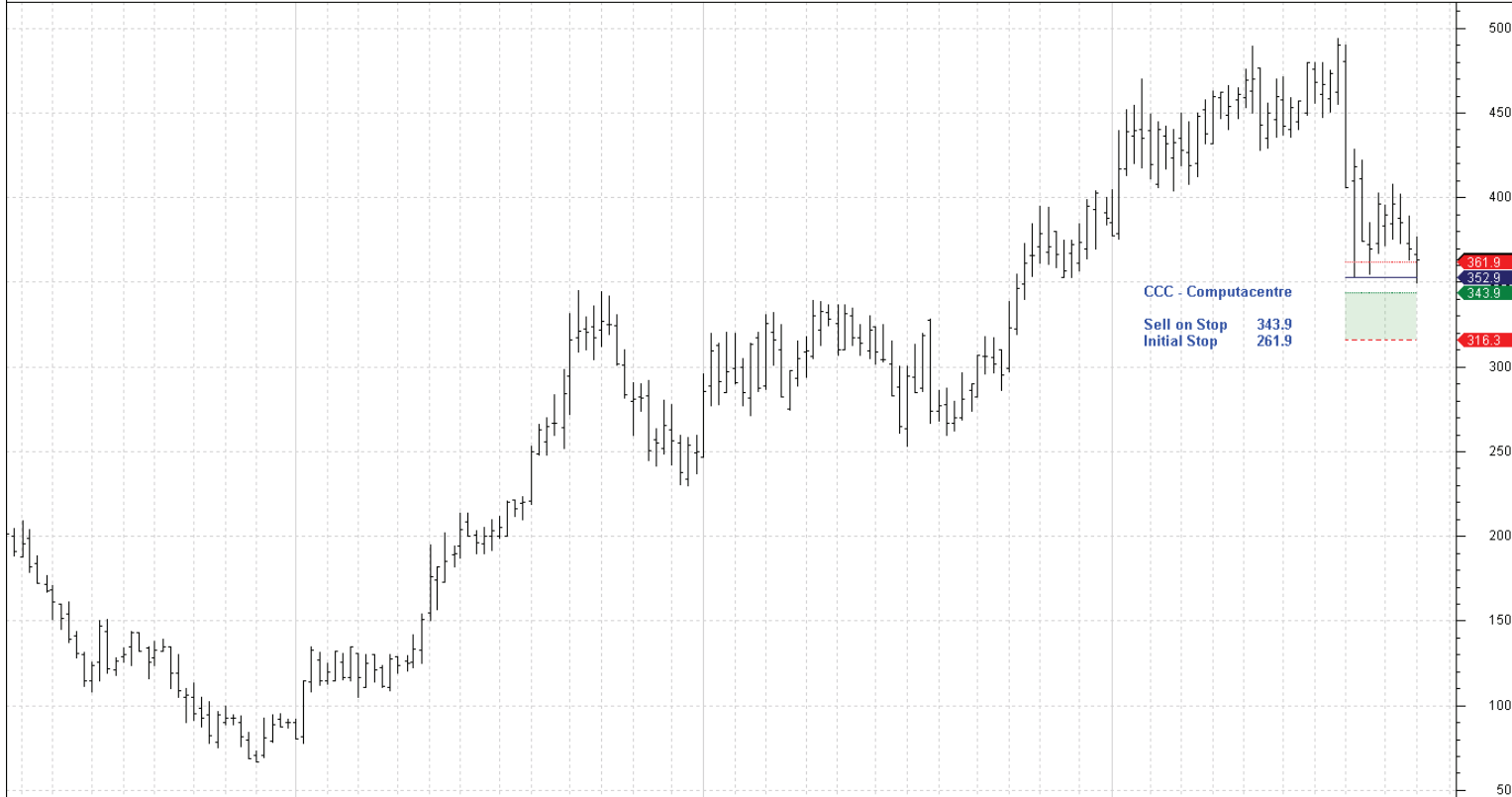
## Retained

Nil

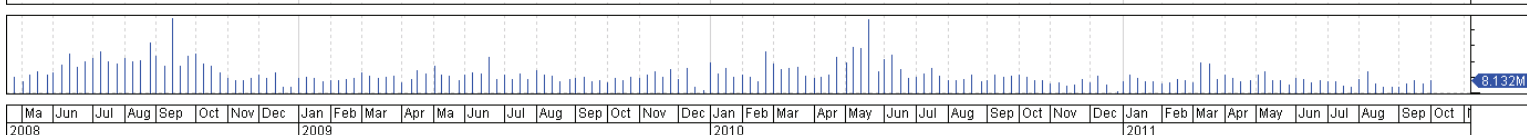
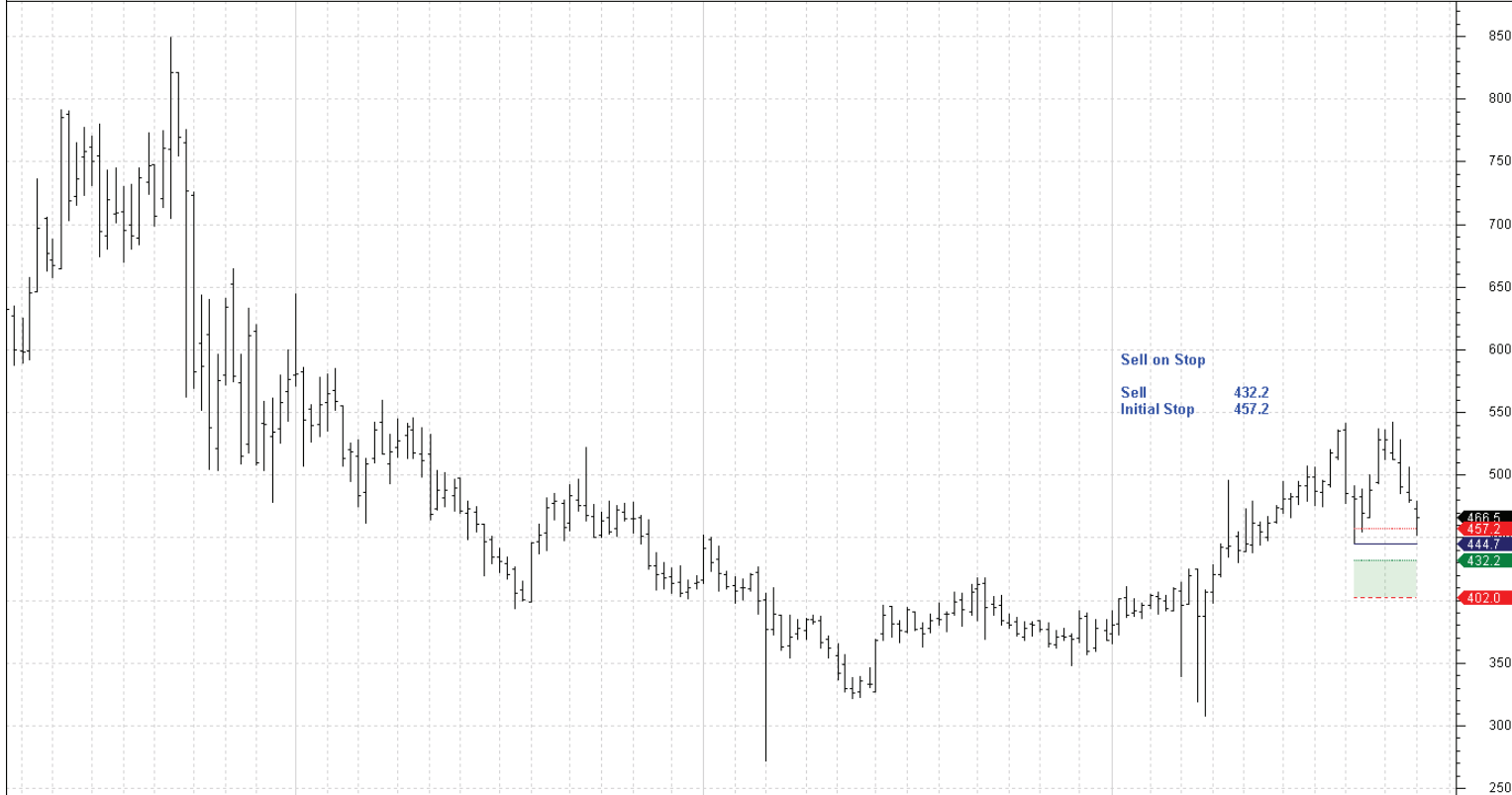
Company	Code	Direction	Entry	Stop
---------	------	-----------	-------	------

## New

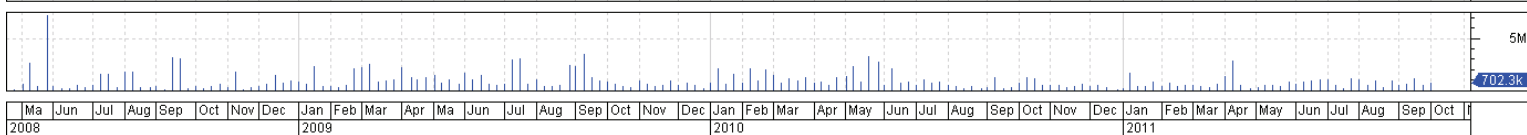
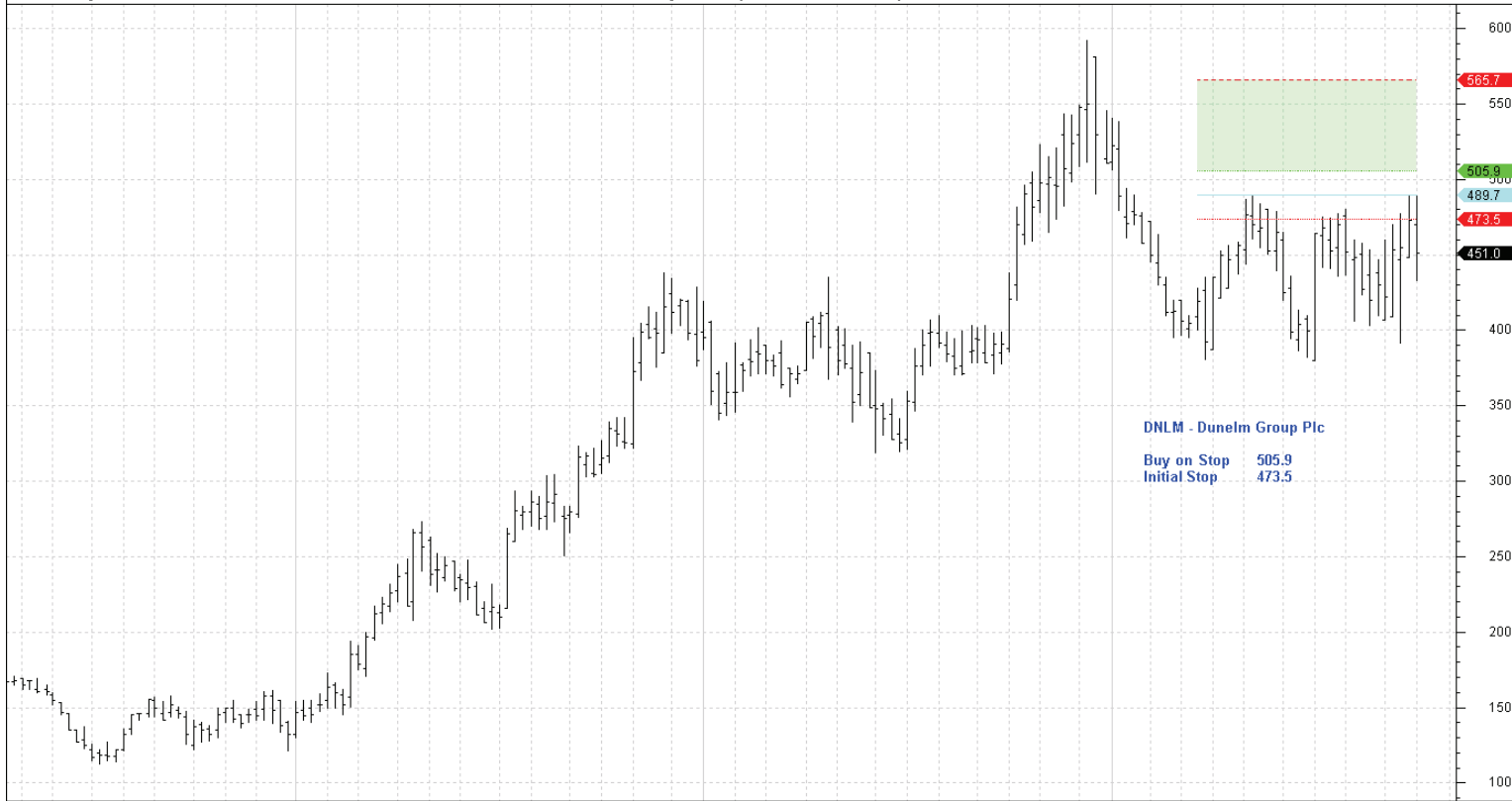
Drax Group	DRX	Sell	432.2	457.2
------------	-----	------	-------	-------



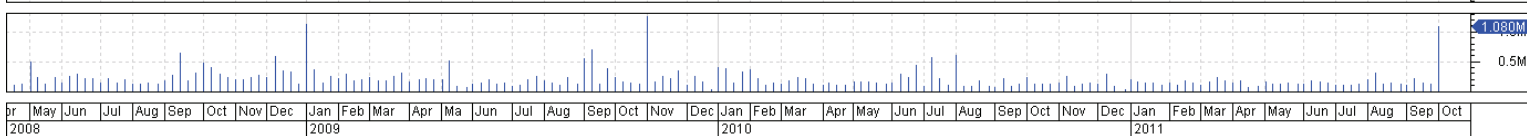
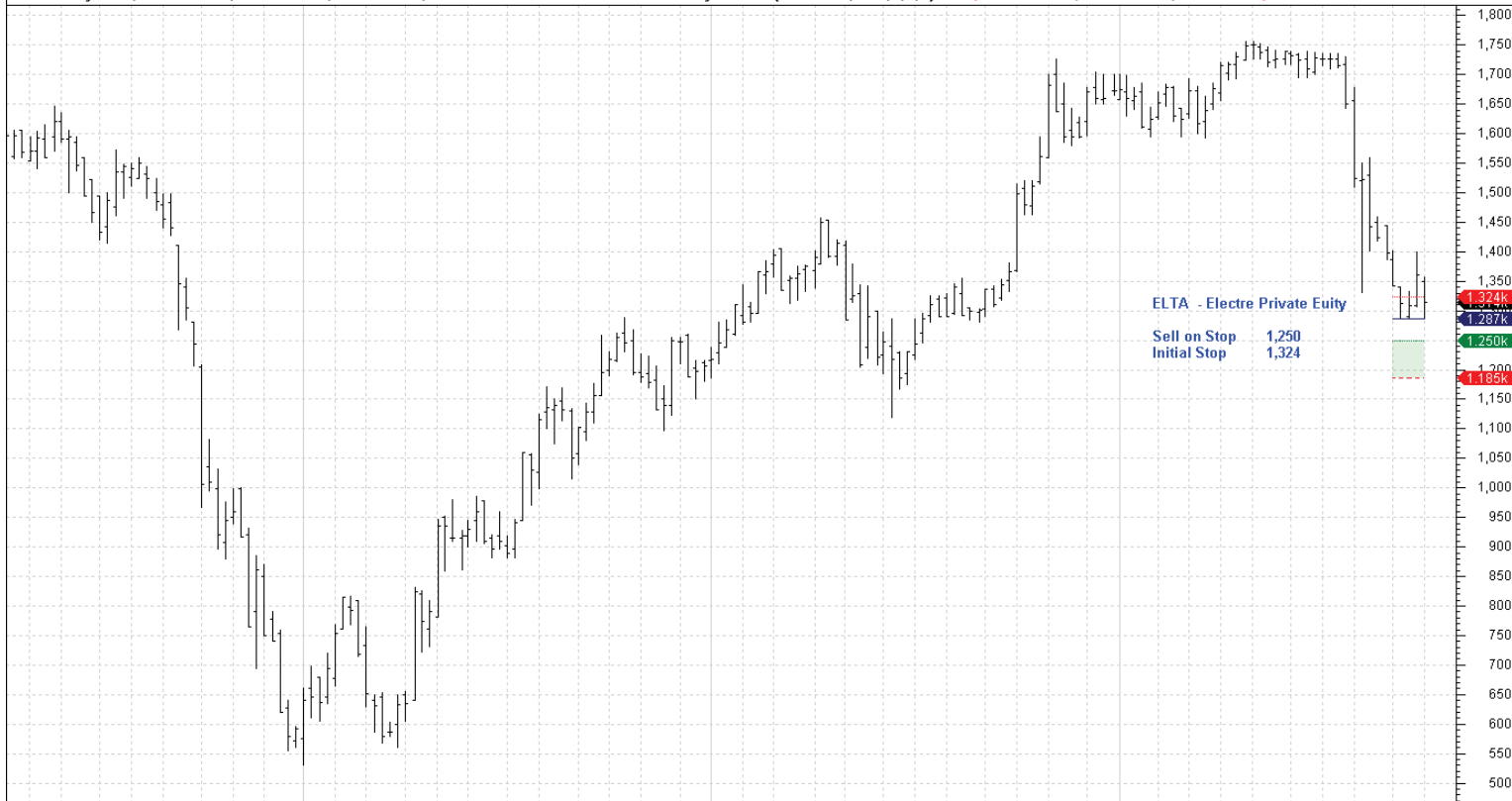
Ma Jun Jul Aug Sep Oct Nov Dec 2008 Jan Feb Mar Apr Ma Jun Jul Aug Sep Oct Nov Dec 2010 Jan Feb Mar Apr May Jun Jul Aug Sep Oct Nov Dec 2011



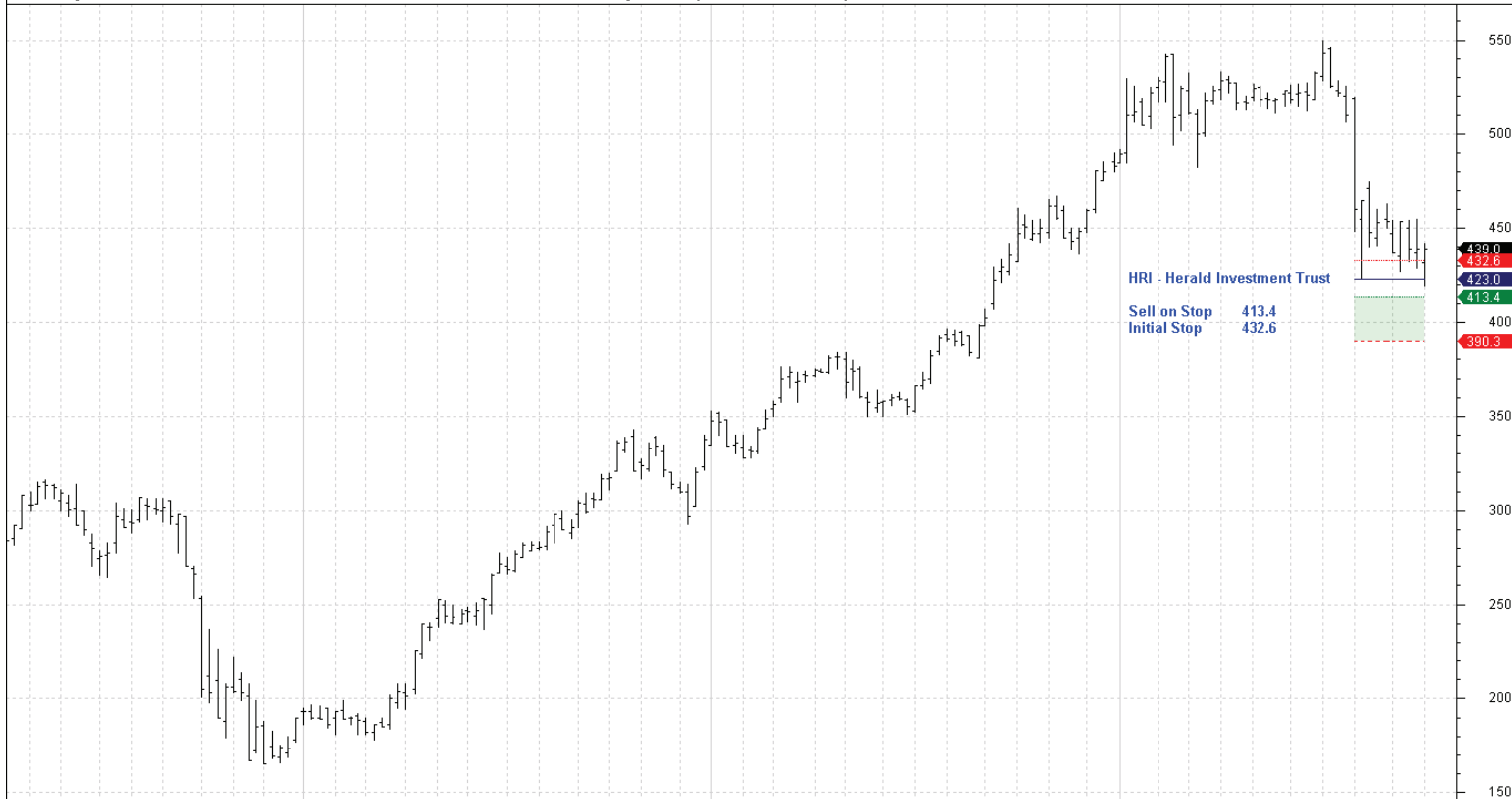
Ma Jun Jul Aug Sep Oct Nov Dec 2008 Jan Feb Mar Apr Ma Jun Jul Aug Sep Oct Nov Dec 2010 Jan Feb Mar Apr May Jun Jul Aug Sep Oct Nov Dec 2011



Ma Jun Jul Aug Sep Oct Nov Dec 2008 Jan Feb Mar Apr Ma Jun Jul Aug Sep Oct Nov Dec 2009 Jan Feb Mar Apr May Jun Jul Aug Sep Oct Nov Dec 2010 Jan Feb Mar Apr May Jun Jul Aug Sep Oct Nov Dec 2011

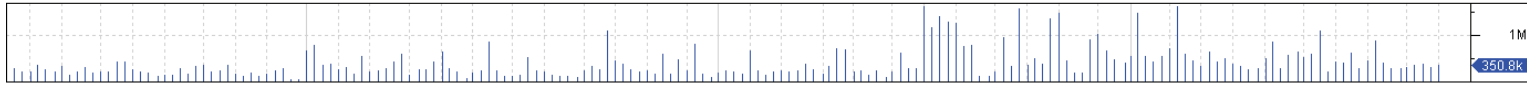


pr May Jun Jul Aug Sep Oct Nov Dec 2008 Jan Feb Mar Apr Ma Jun Jul Aug Sep Oct Nov Dec 2009 Jan Feb Mar Apr May Jun Jul Aug Sep Oct Nov Dec 2010 Jan Feb Mar Apr May Jun Jul Aug Sep Oct Nov Dec 2011

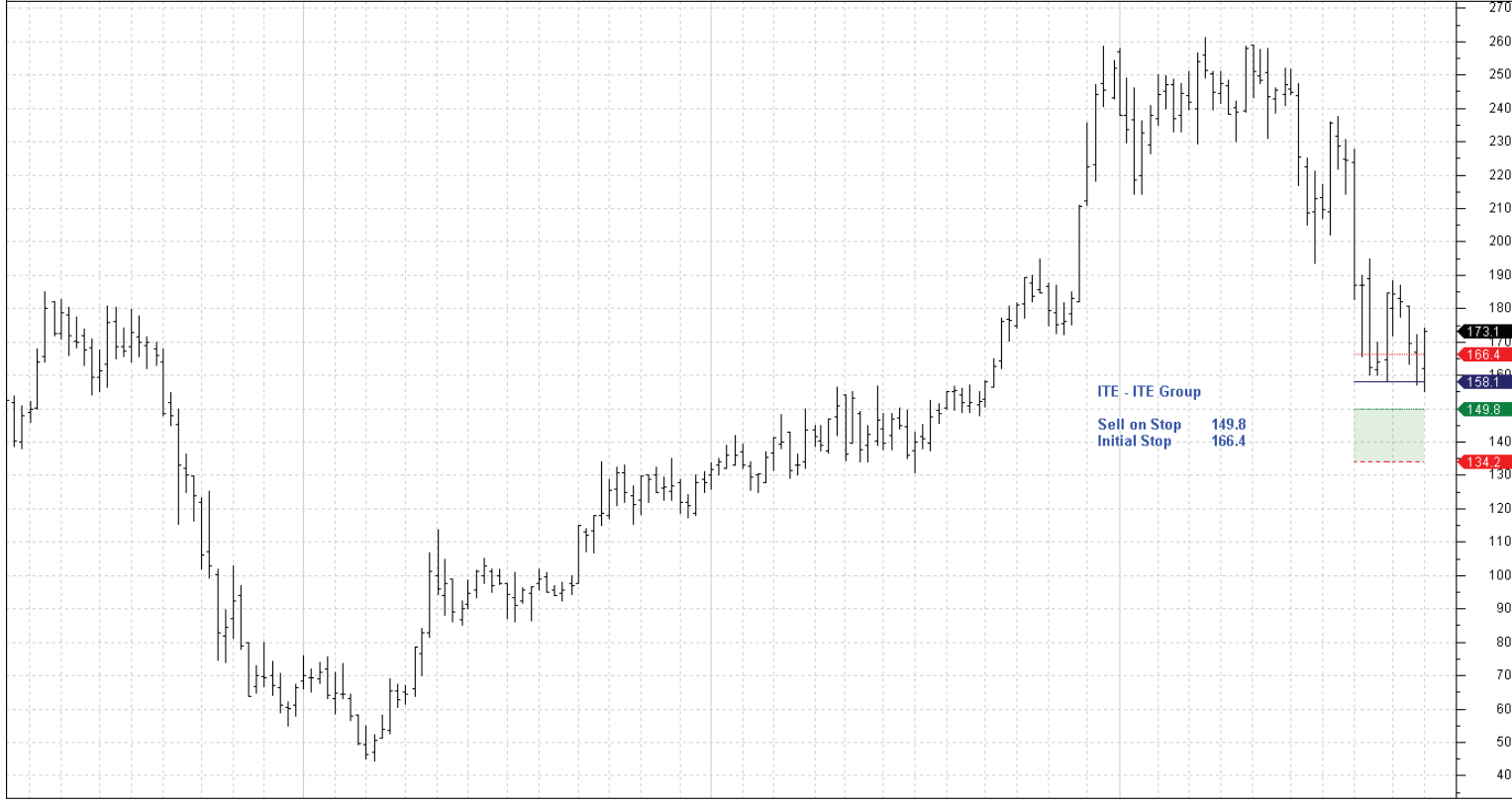


HRI - Herald Investment Trust  
 Sell on Stop 413.4  
 Initial Stop 432.6

439.0  
 432.6  
 423.0  
 413.4  
 400  
 390.3

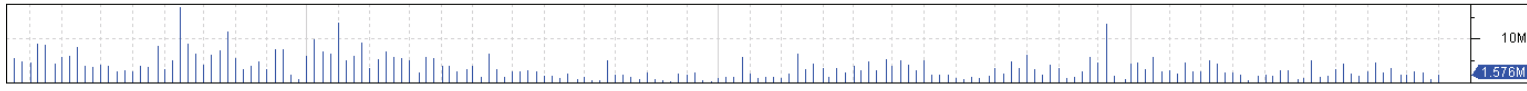


br May Jun Jul Aug Sep Oct Nov Dec 2008 Jan Feb Mar Apr Ma Jun Jul Aug Sep Oct Nov Dec 2009 Jan Feb Mar Apr May Jun Jul Aug Sep Oct Nov Dec 2010 Jan Feb Mar Apr May Jun Jul Aug Sep Oct Nov Dec 2011



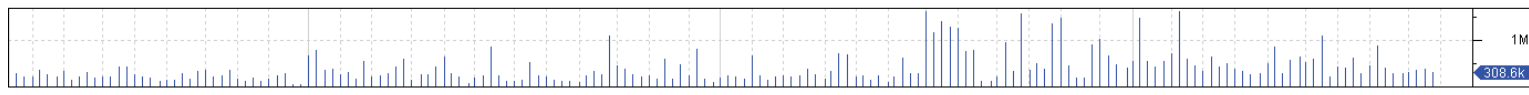
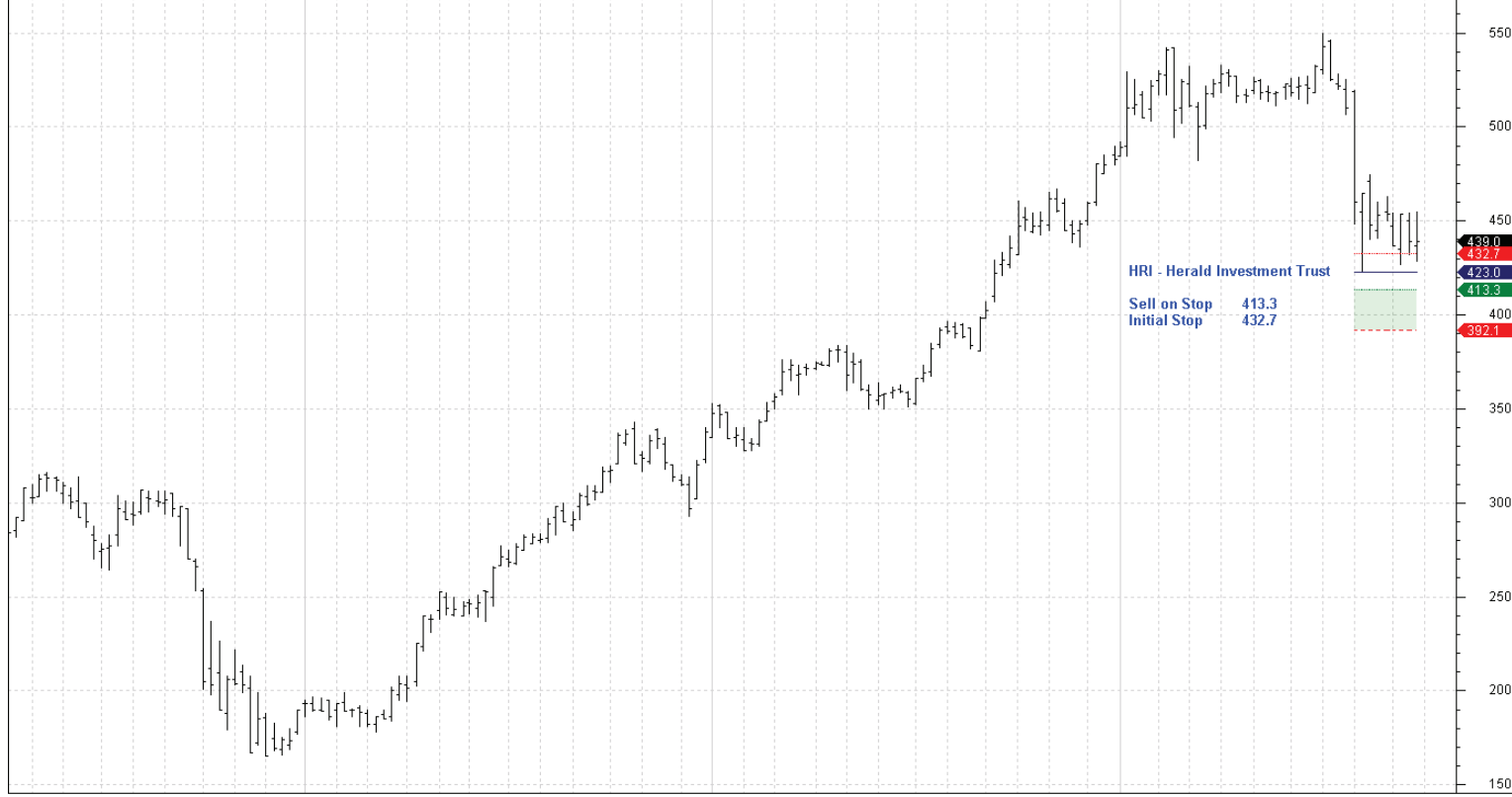
ITE - ITE Group  
 Sell on Stop 149.8  
 Initial Stop 166.4

173.1  
 166.4  
 158.1  
 149.8  
 140  
 134.2



br May Jun Jul Aug Sep Oct Nov Dec 2008 Jan Feb Mar Apr Ma Jun Jul Aug Sep Oct Nov Dec 2009 Jan Feb Mar Apr May Jun Jul Aug Sep Oct Nov Dec 2010 Jan Feb Mar Apr May Jun Jul Aug Sep Oct Nov Dec 2011

HRI Weekly Cl=439.00000 O=436.90000 H=455.00000 L=428.45000 0.00000 0.00% HRI Weekly LW-MCS (25-07-2011, 423.5, C, C) Ma=392.13000 Mi=413.26000 S=423.00000 I=432.74000 30-09-2011



pr	Ma	Jun	Jul	Aug	Sep	Oct	Nov	Dec	Jan	Feb	Mar	Apr	Ma	Jun	Jul	Aug	Sep	Oct	Nov	Dec	Jan	Feb	Mar	Apr	May	Jun	Jul	Aug	Sep	Oct		
2008									2009												2010											

