

Week Ending 30th December, 2011

All major Stock Markets this week were a bit turbulent with some indecision creeping into price action

London Stock Exchange

Currency – British Pence

Entries: Nil

Exits: Nil

The colour coding we are currently using is as follows:

Amended orders or stops

Retained Orders or stops – no change

New working orders

Immediate action required

Short Sell

Open Positions

Stops:	Code	Old	Action	New
<u>Amended</u>				
Fenner Plc	FENR	365.7	Amend	369.6

Retained

Nil

Working Orders

Company	Code	Direction	Entry	Stop
<u>Amended</u>				
ARM Holdings	ARM	Buy	671.3	602.7
Associated British Foods	ABF	Buy	1174	1136
Berensden	BRSN	Sell	395.1	410.3

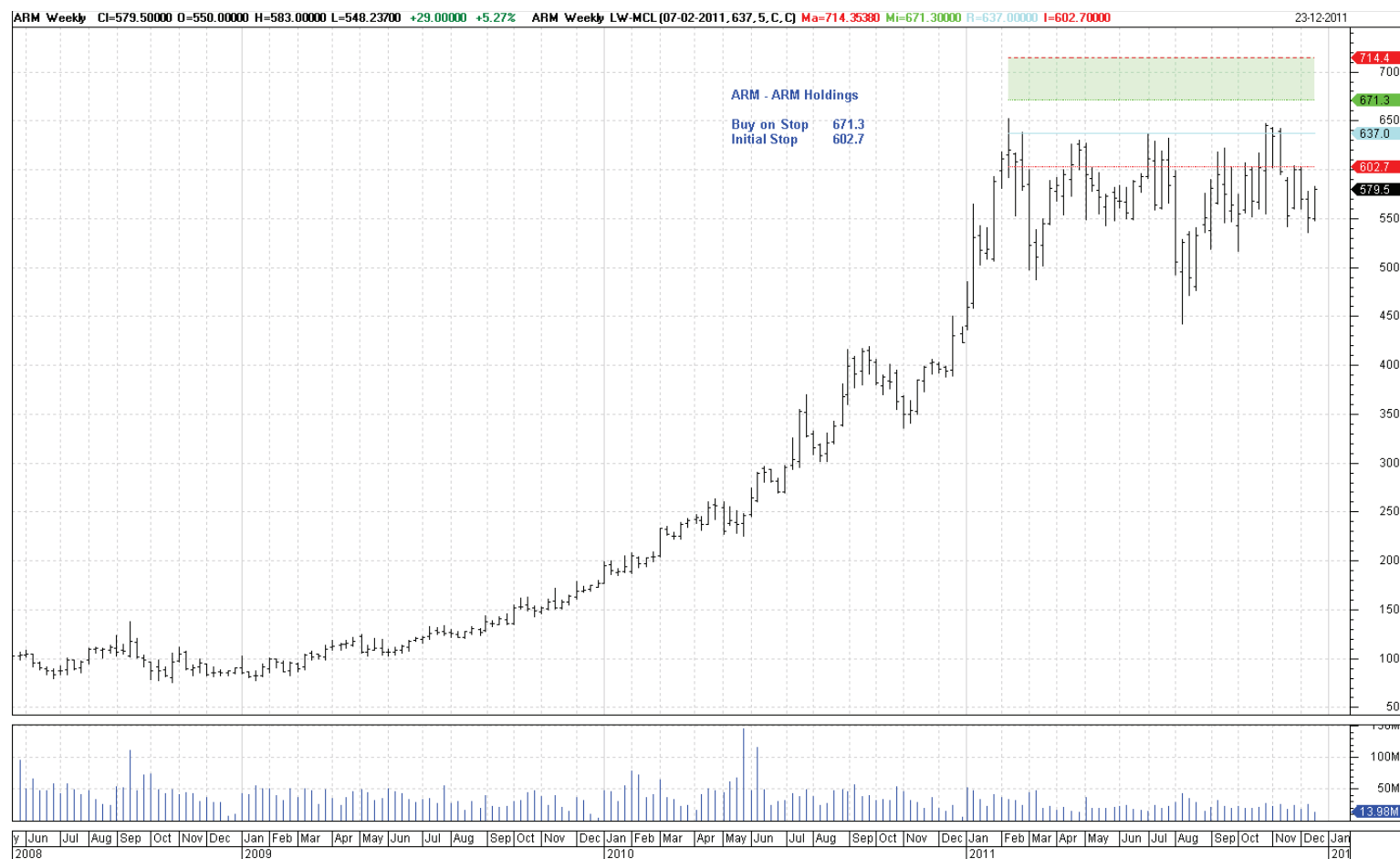
Capital & Counties Prop	CAPC	Buy	187.5	178.3
Centrica	CNA	Sell	272.7	285.1
Dignity	DTY	Buy	869.5	843.5
Herald Investment	HRI	Sell	406.8	431.2
Monks Investment Trust	MNKS	Sell	290.1	305.0

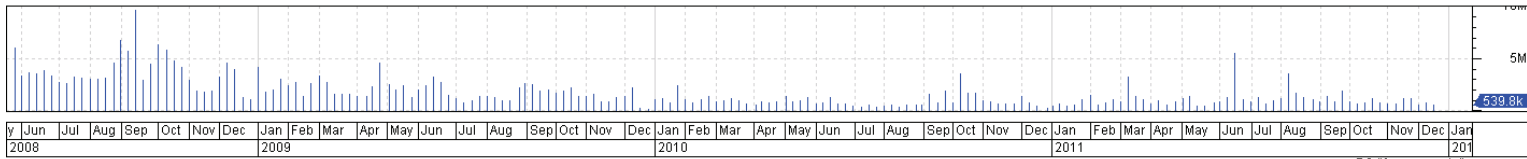
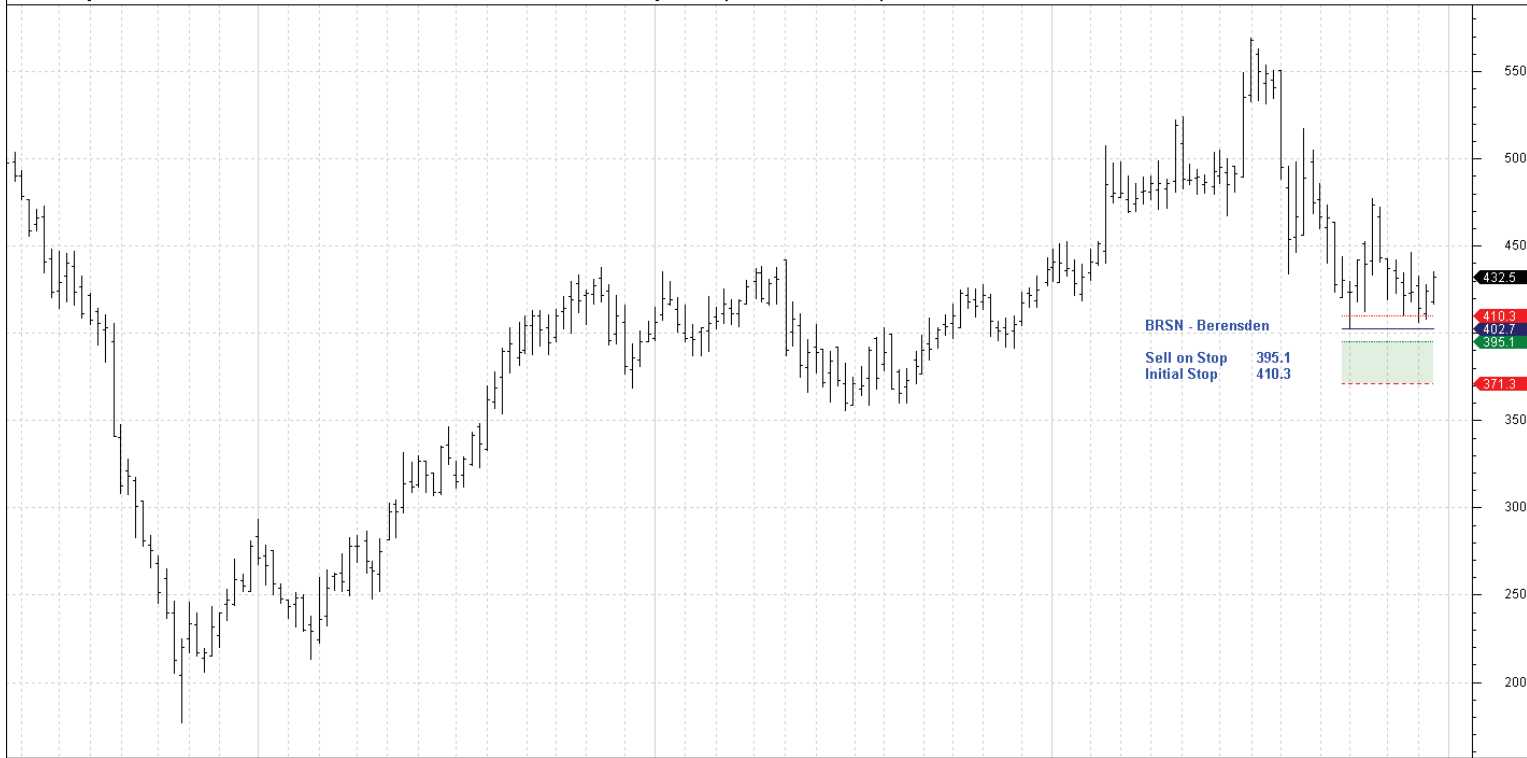
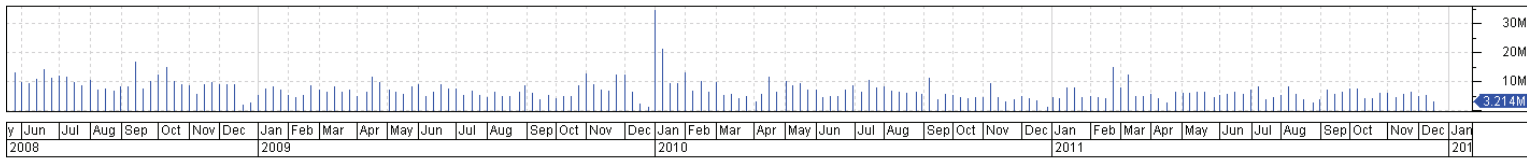
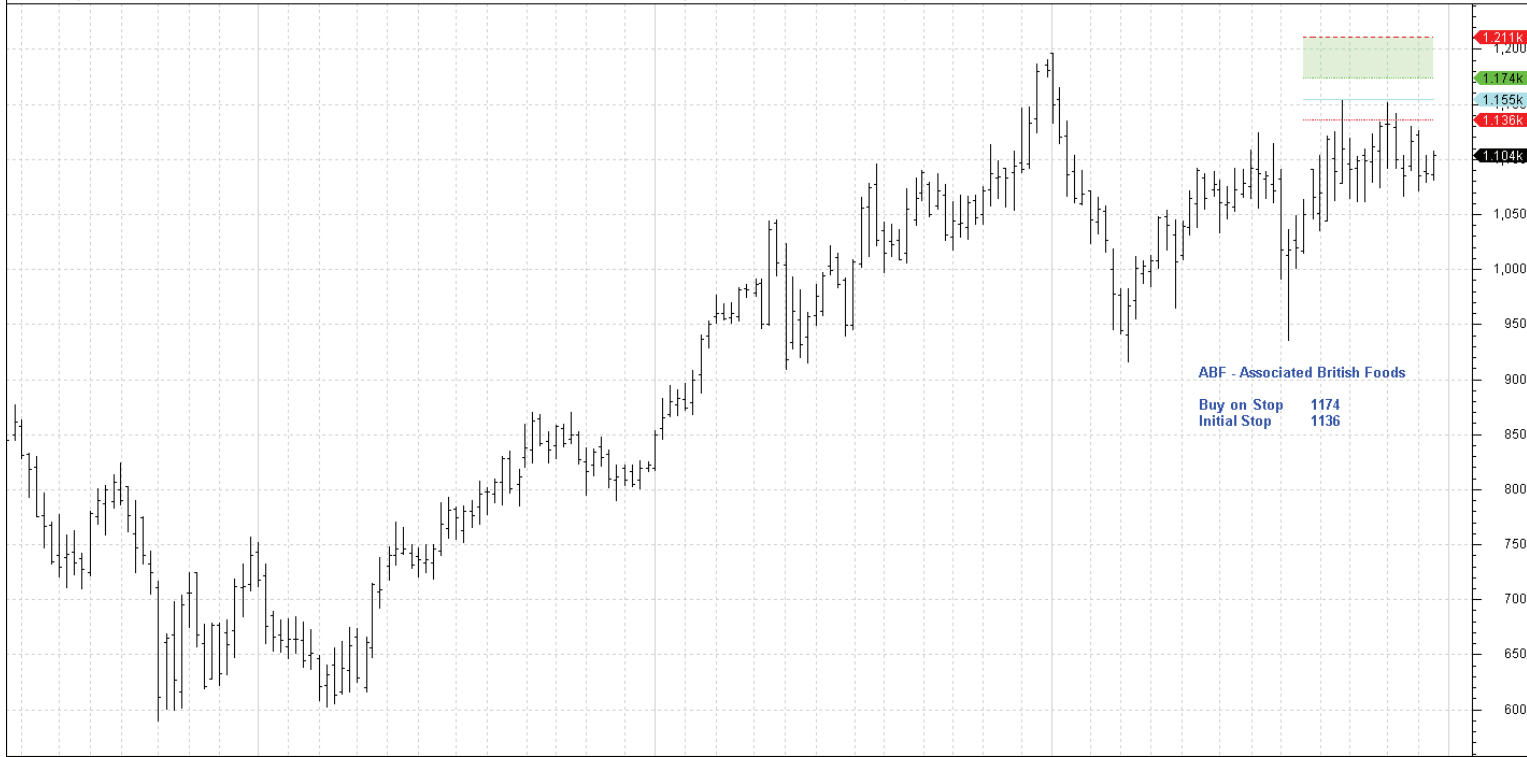
Retained

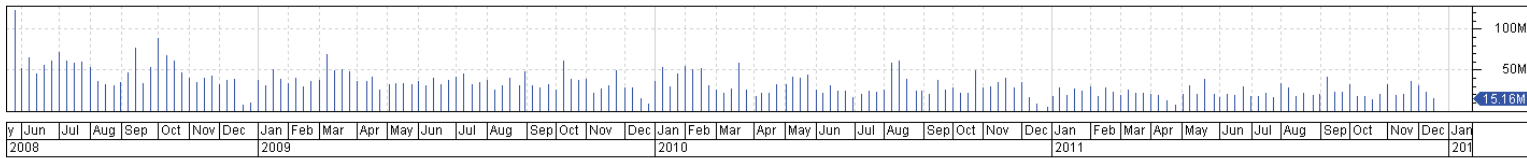
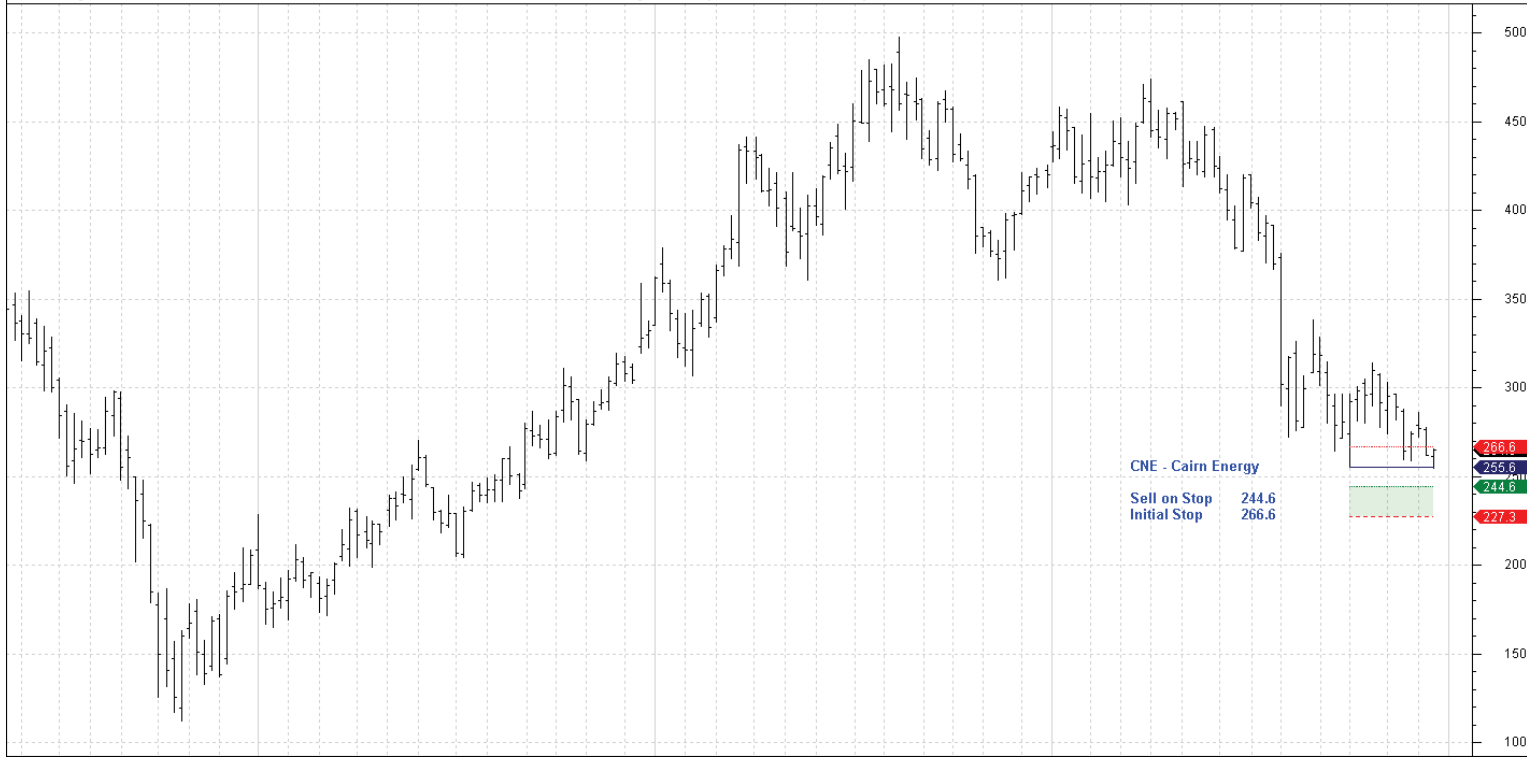
NEW

Cairn Energy	CNE	Sell	244.6	266.6
Capital Shopping Centres	CSCG	Sell	264.5	301.9
Cobham	COB	Sell	160.1	172.9
Hochschild Mining	HOC	Sell	358.4	413.6
Keller	KLR	Sell	217.7	248.4
Land Securities Group	LAND	Sell	579	641
Lonmin	LMI	Sell	885.1	997.9
Pearson	PERSON	Buy	1248	1184
Premium Oil	PMO	Buy	395.8	372.4
Royal Dutch Shell A Shares	RDSA	Buy	2383	2239

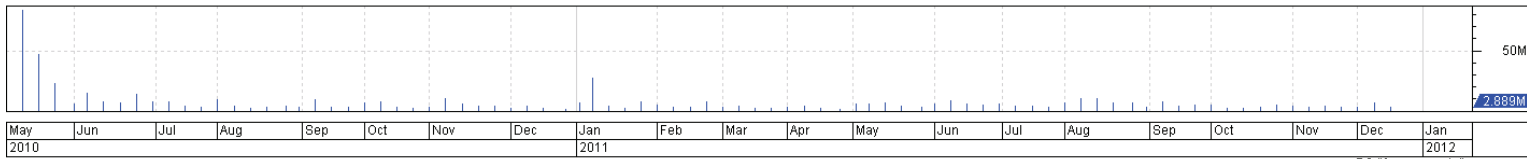
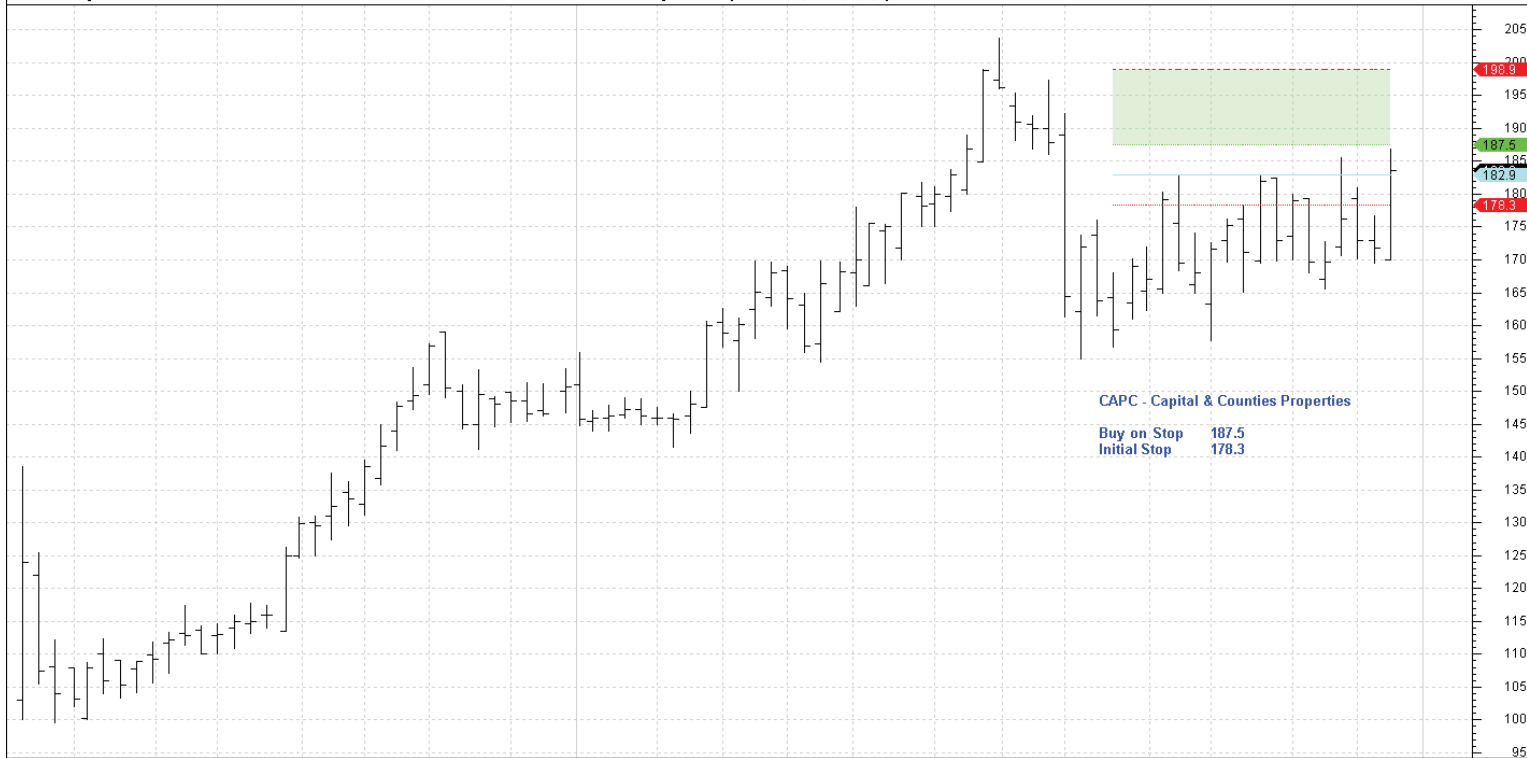
Charts



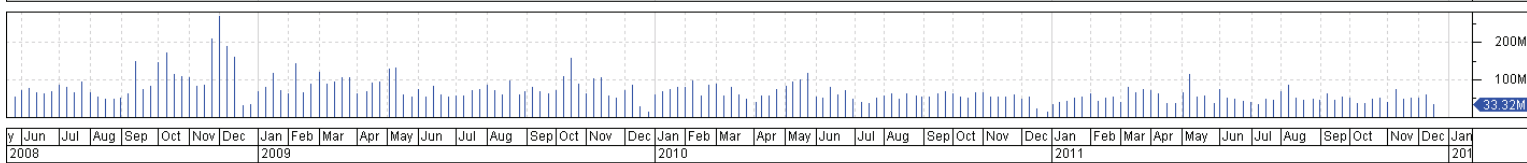
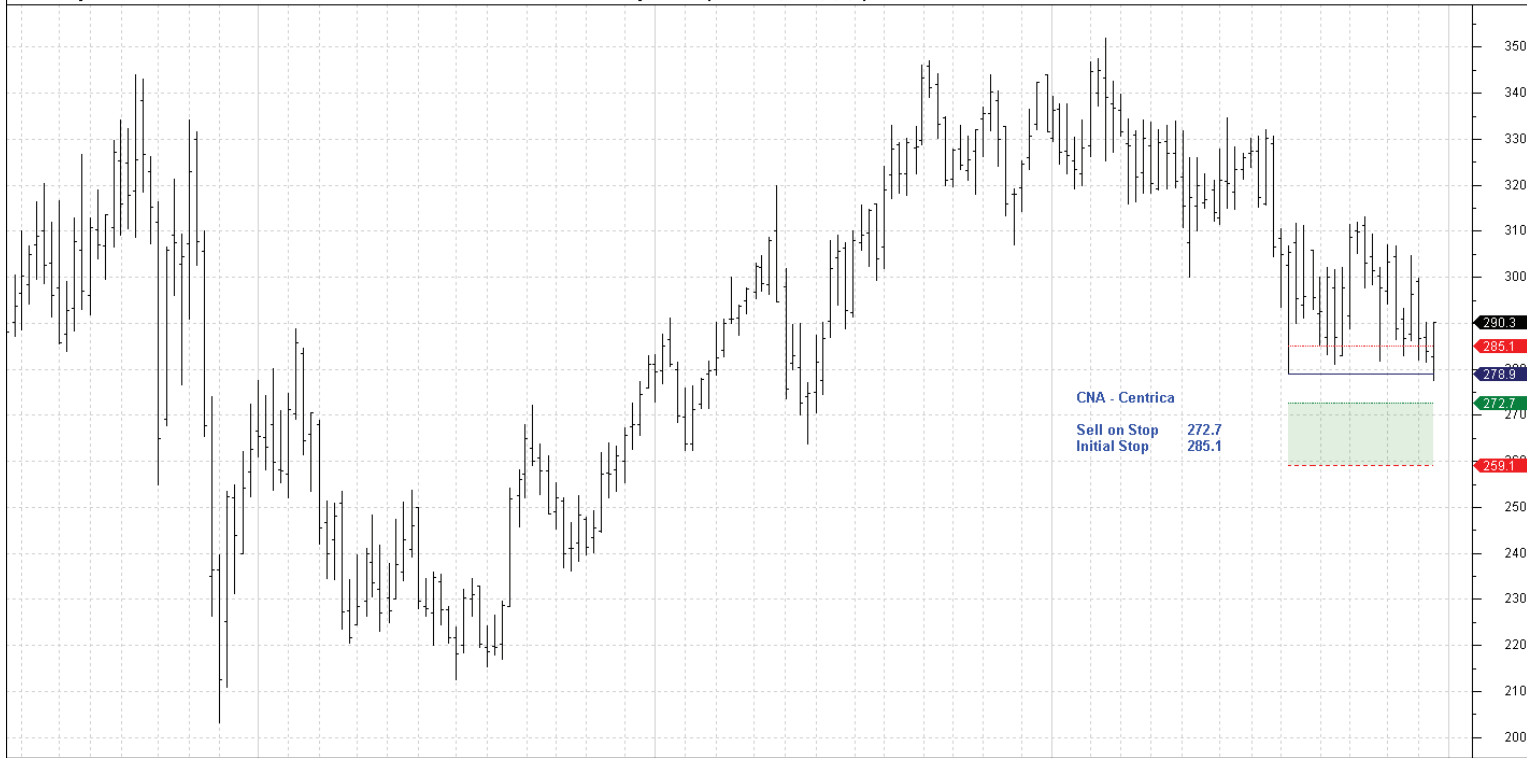
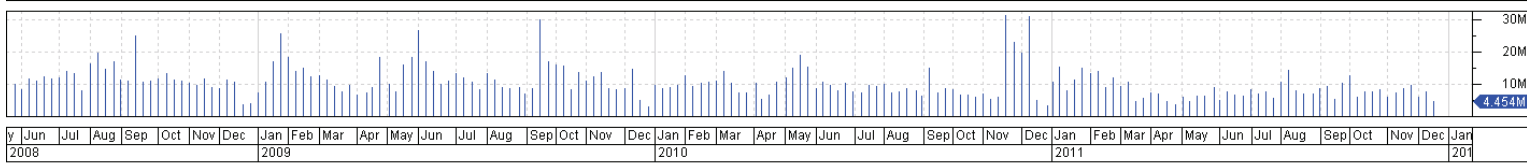
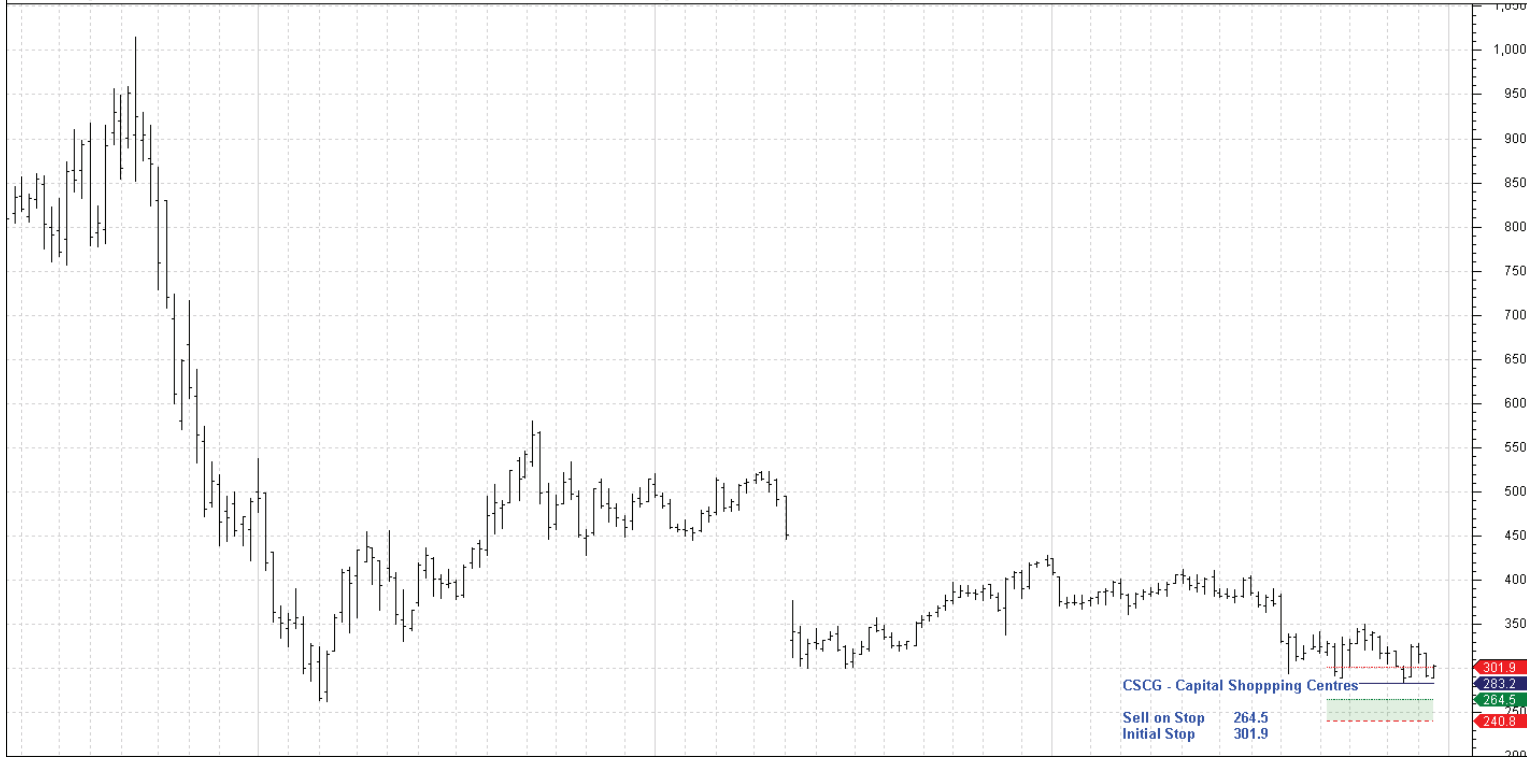


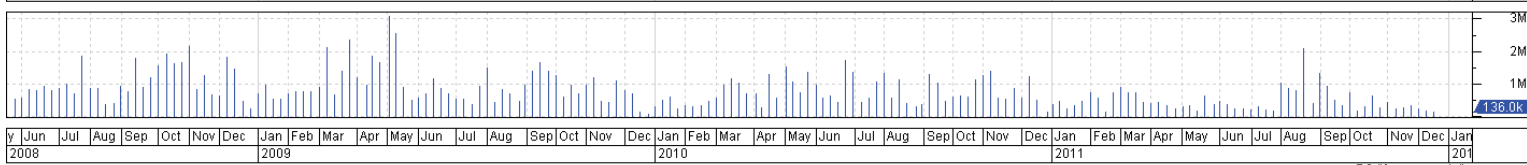
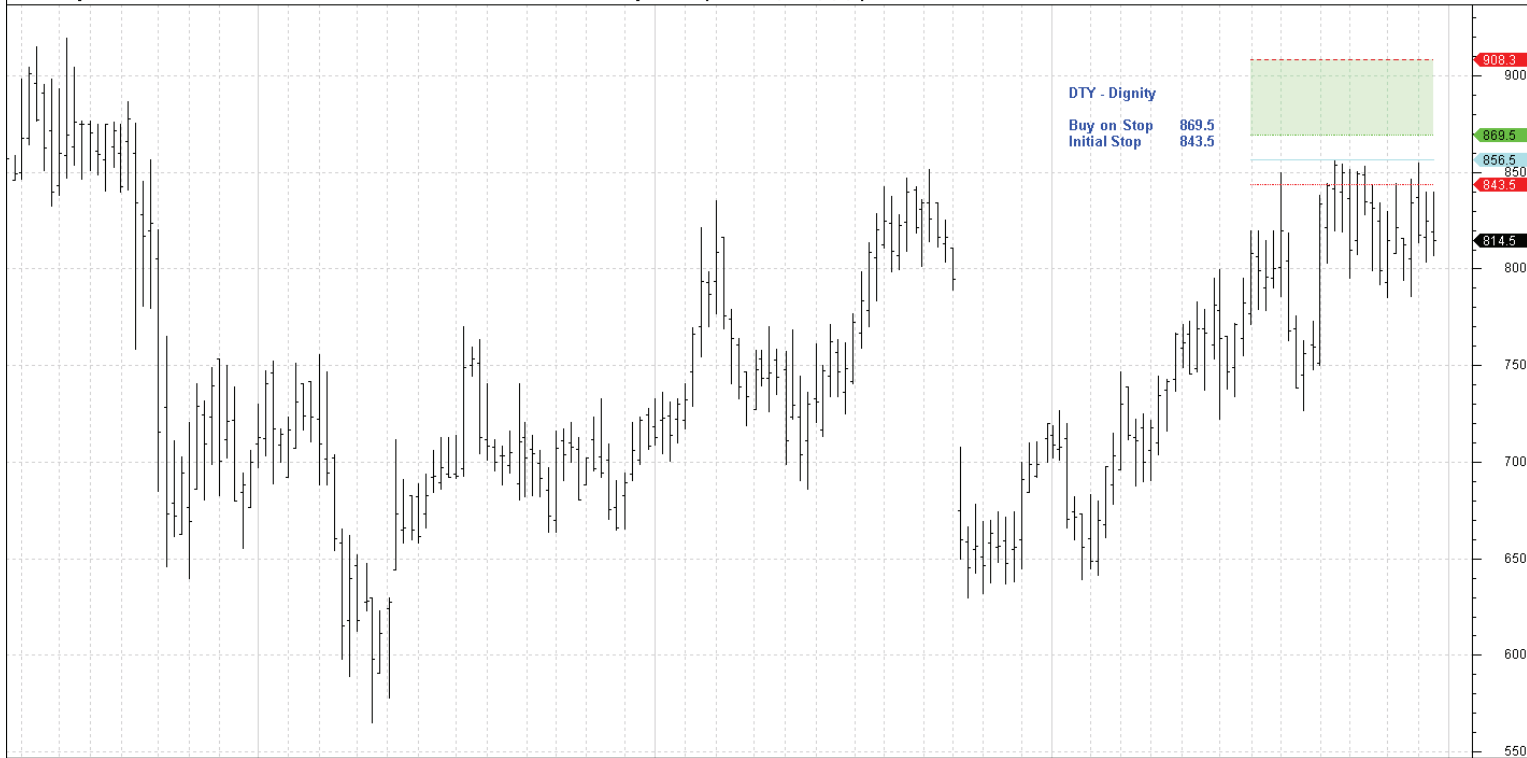
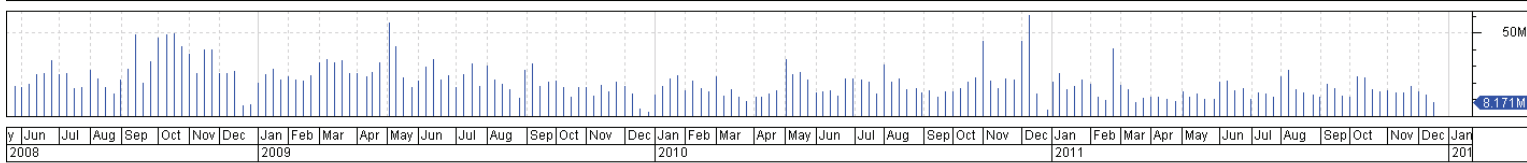
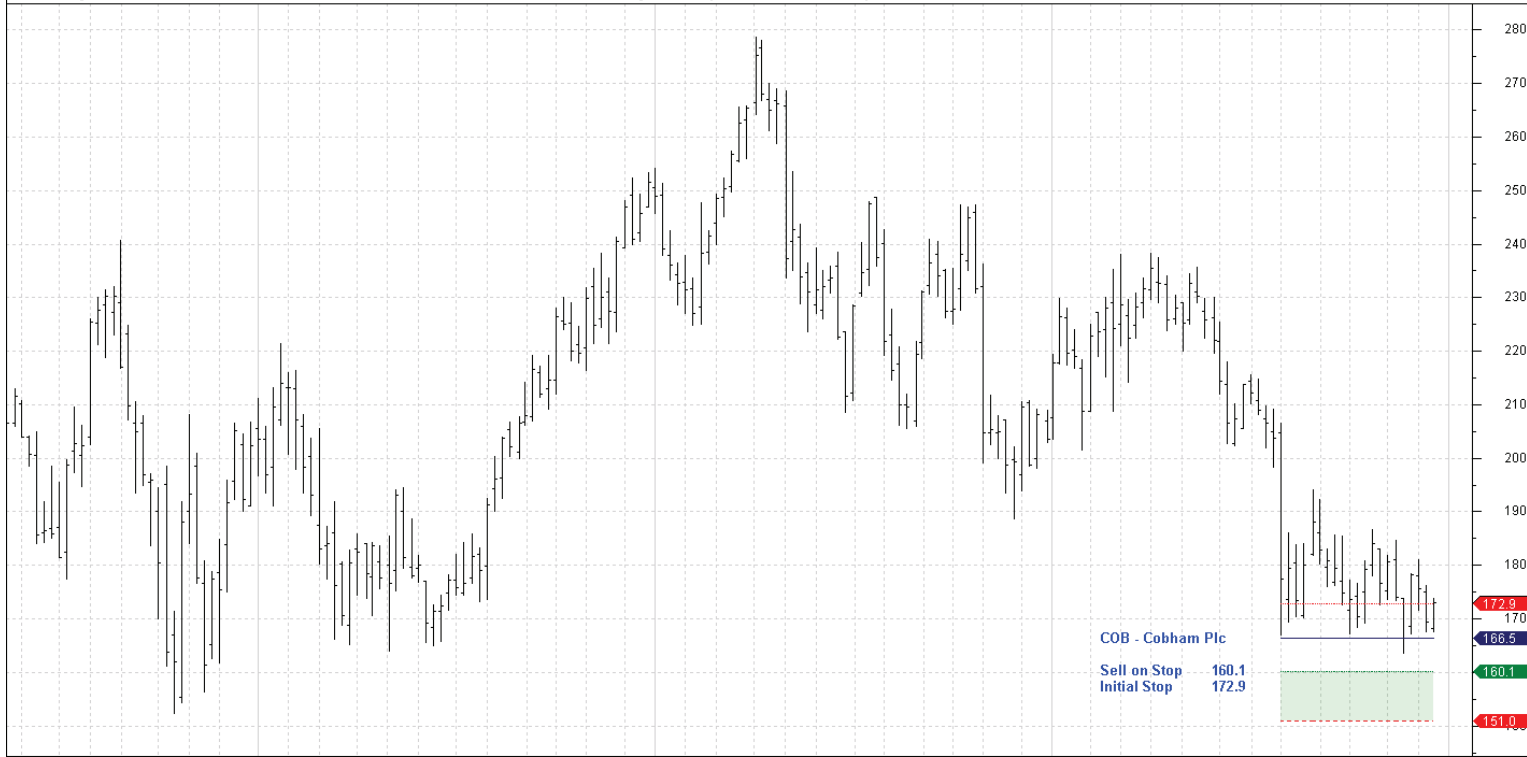


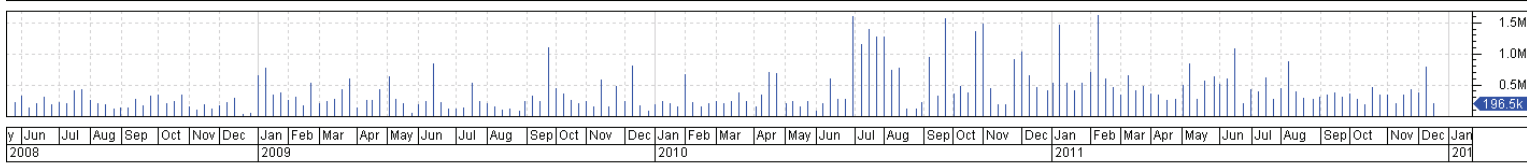
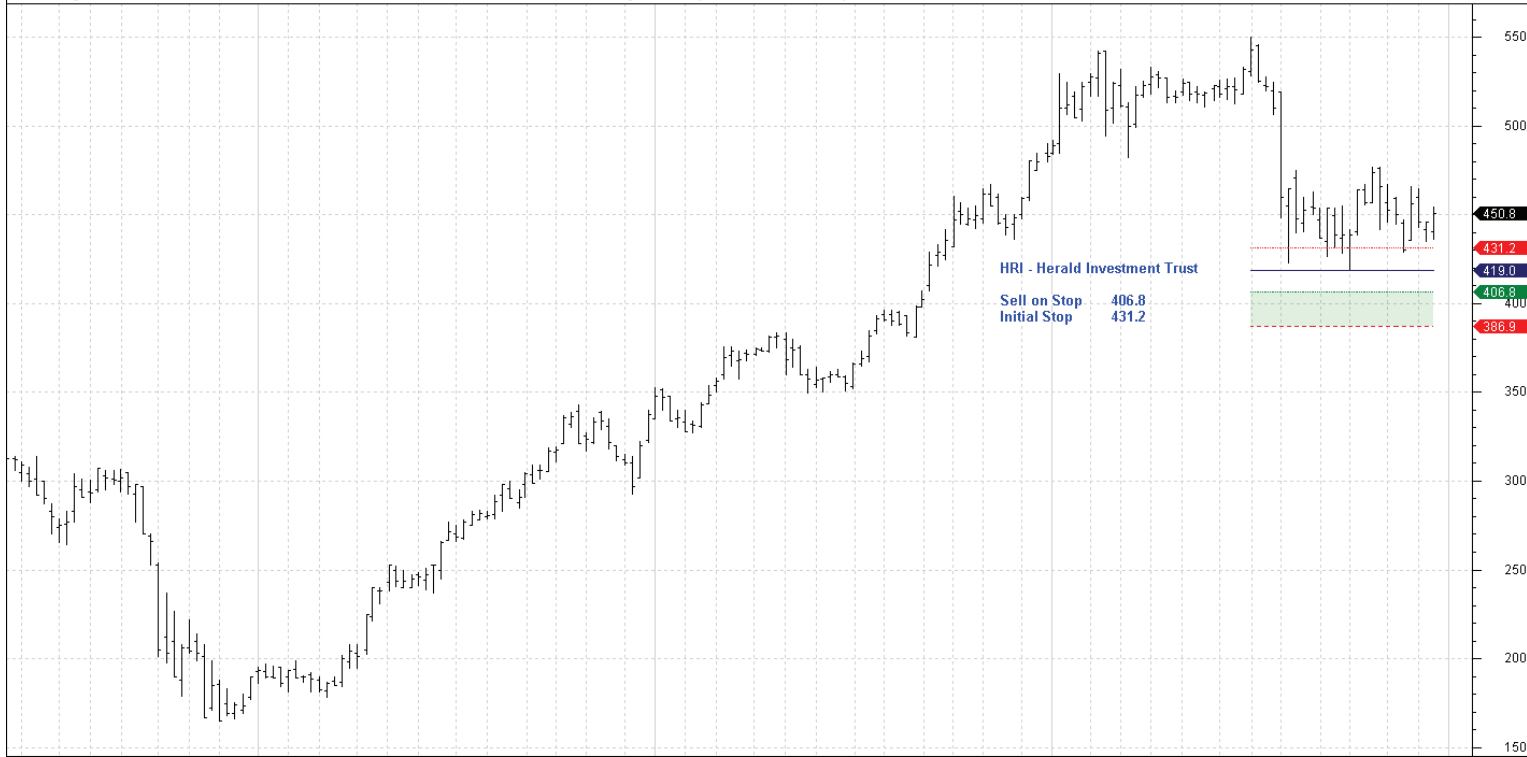
y Jun Jul Aug Sep Oct Nov Dec 2008 Jan Feb Mar Apr May Jun Jul Aug Sep Oct Nov Dec 2009 Jan Feb Mar Apr May Jun Jul Aug Sep Oct Nov Dec 2010 Jan Feb Mar Apr May Jun Jul Aug Sep Oct Nov Dec 2011 © BullSystems www.bullsystems.com



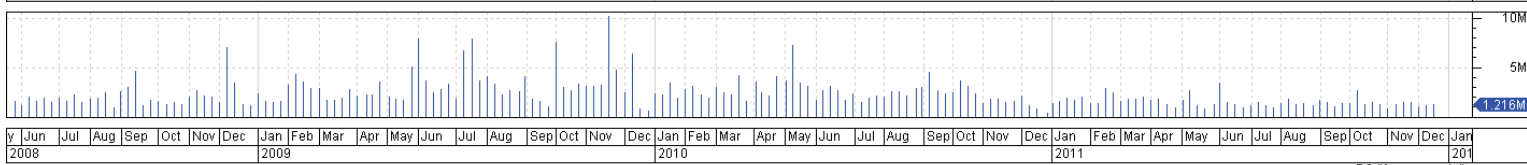
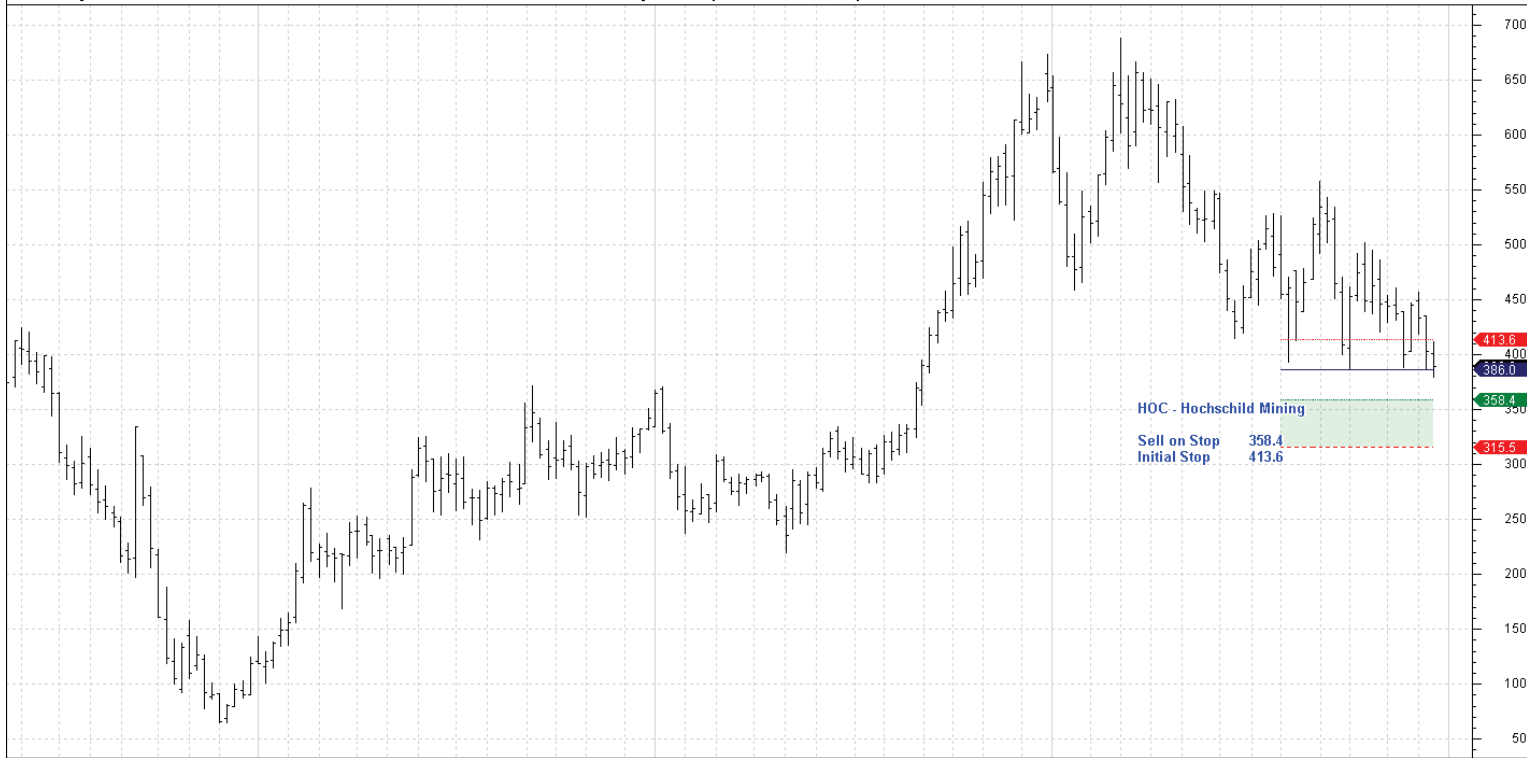
May Jun Jul Aug Sep Oct Nov Dec 2010 Jan Feb Mar Apr May Jun Jul Aug Sep Oct Nov Dec 2011 © BullSystems www.bullsystems.com



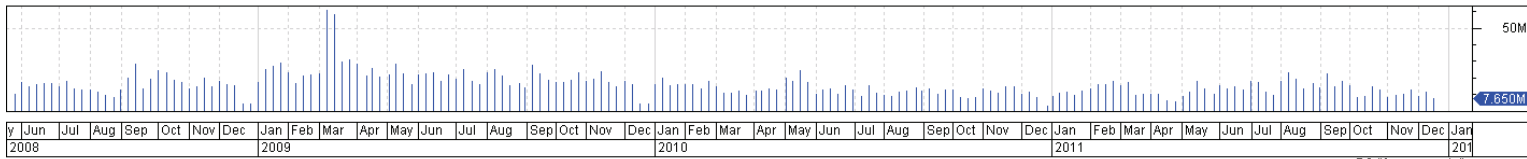
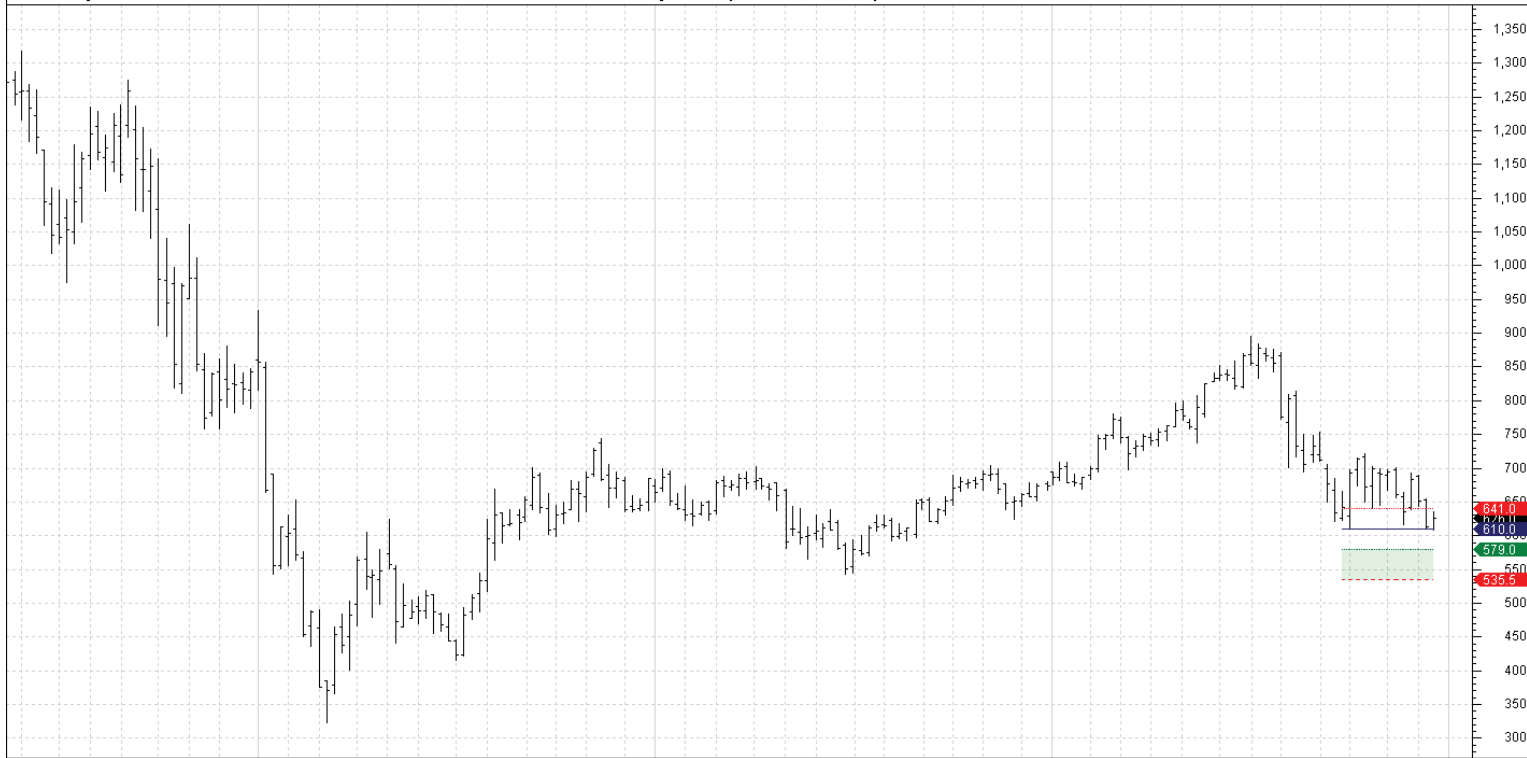
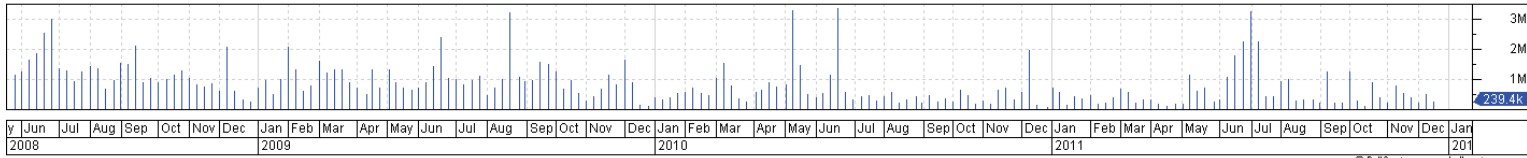
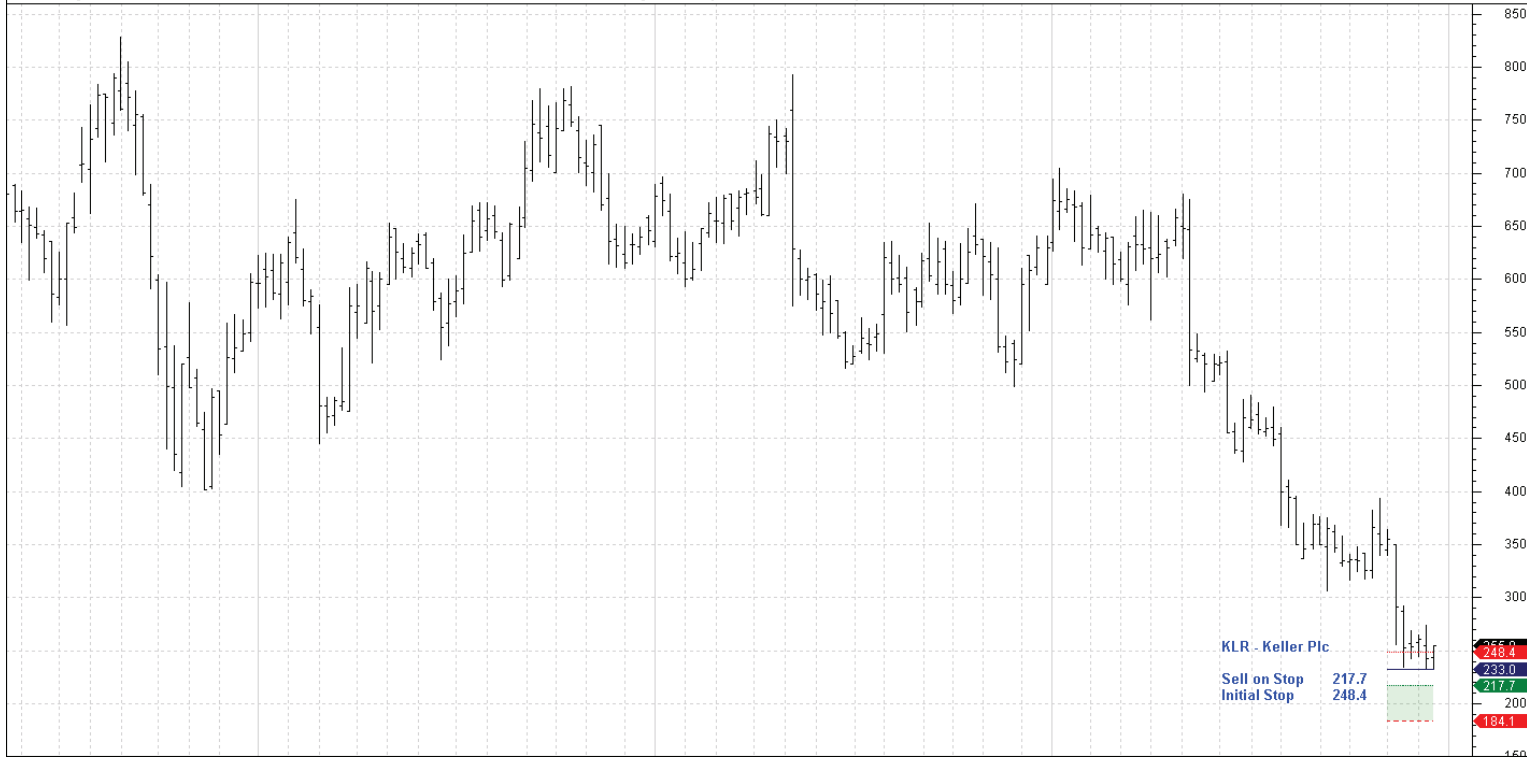


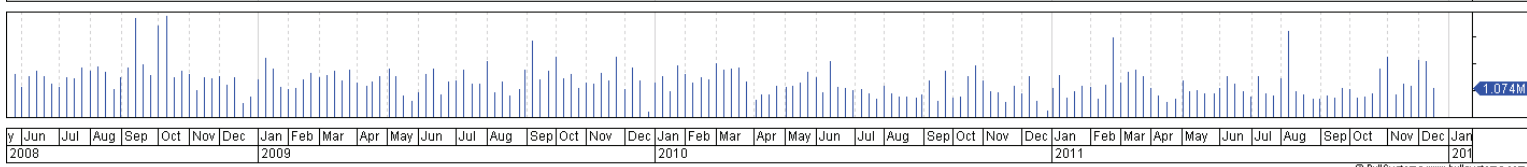
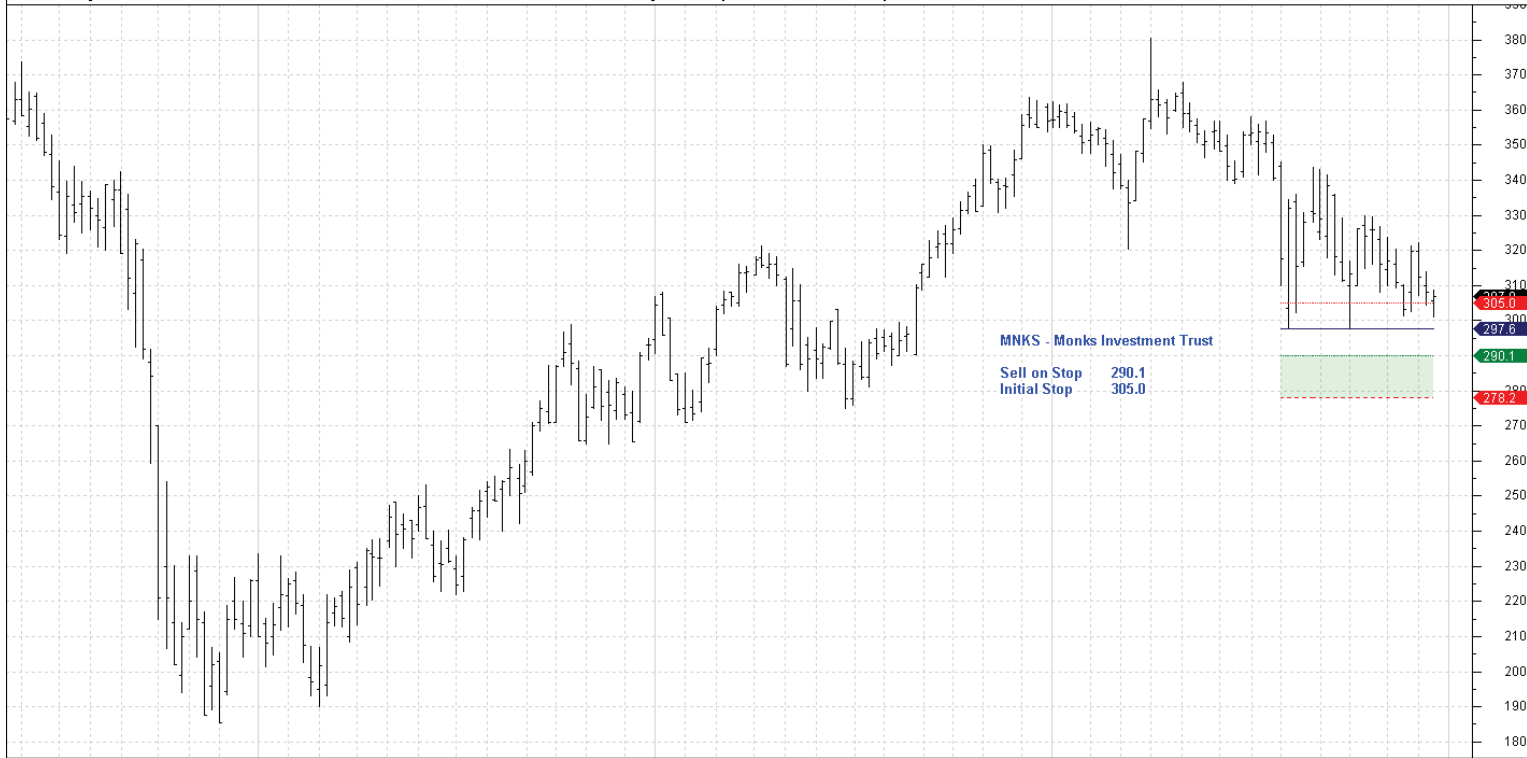
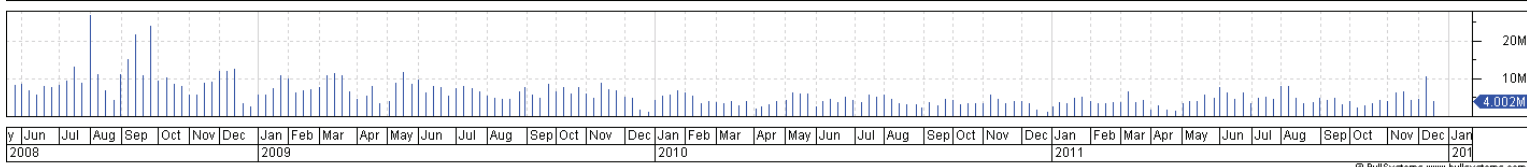
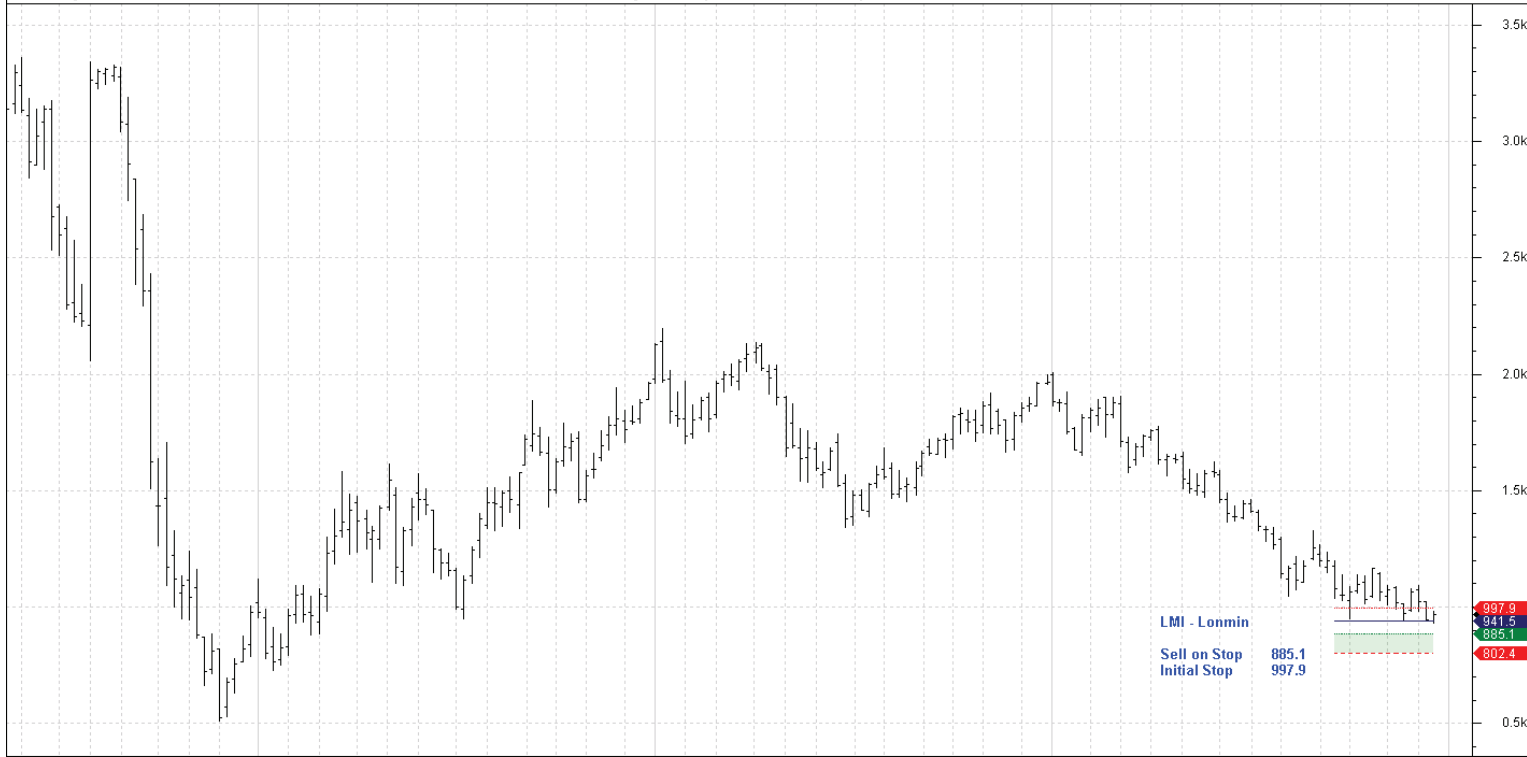


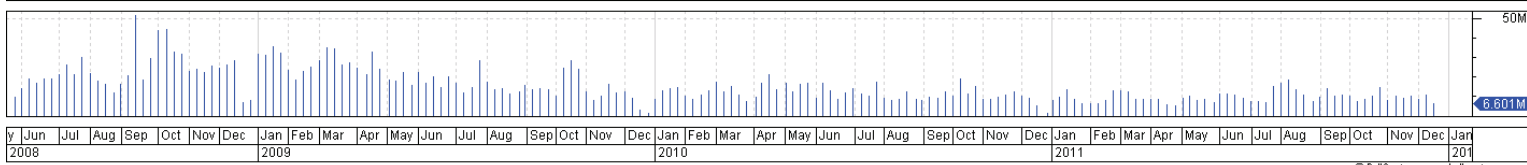
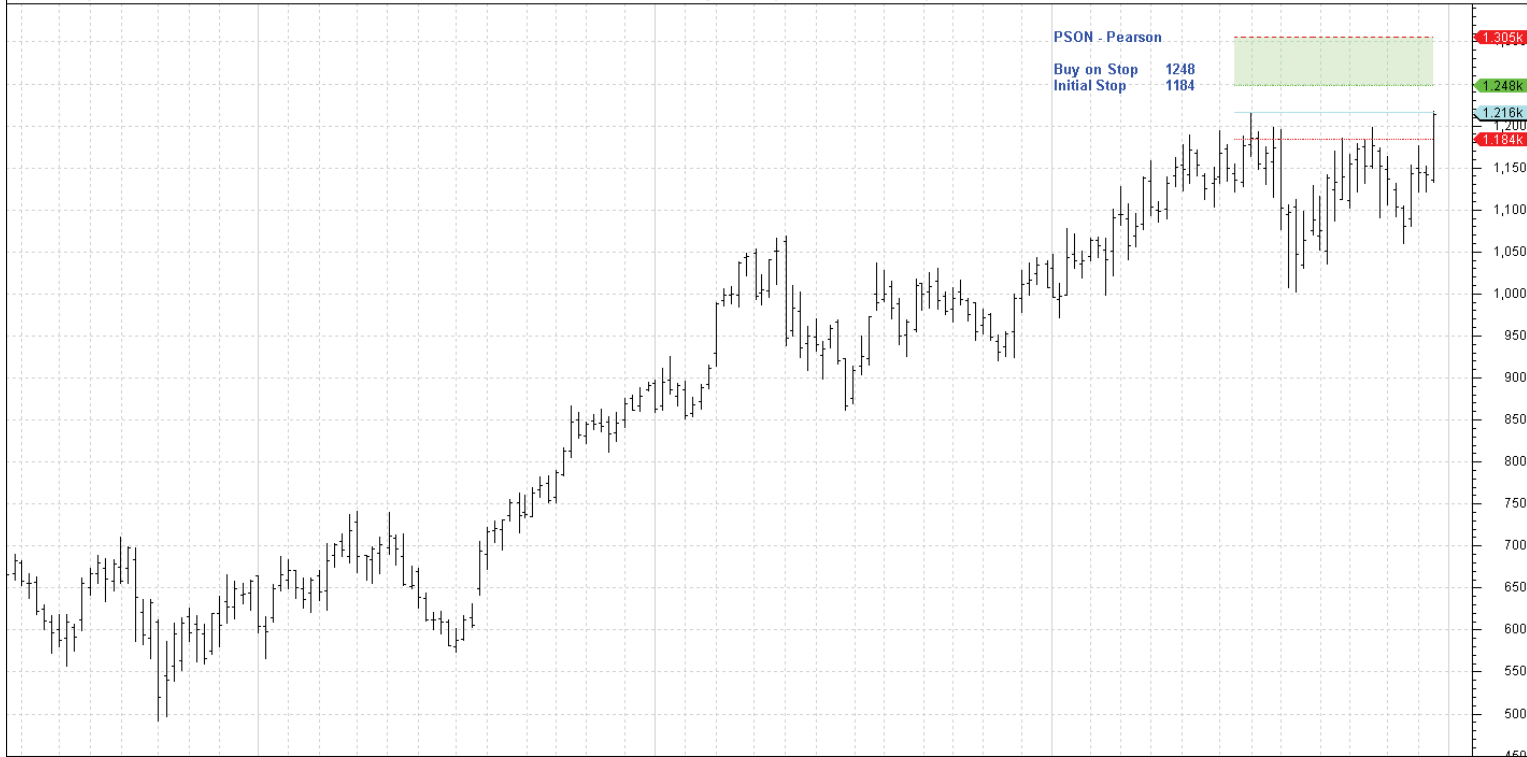
y Jun Jul Aug Sep Oct Nov Dec Jan Feb Mar Apr May Jun Jul Aug Sep Oct Nov Dec Jan Feb Mar Apr May Jun Jul Aug Sep Oct Nov Dec Jan 2008 2009 2010 2011 2012 © BullSystems www.bullsystems.com



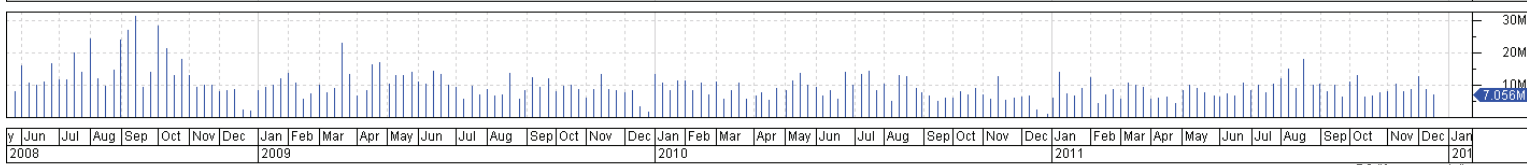
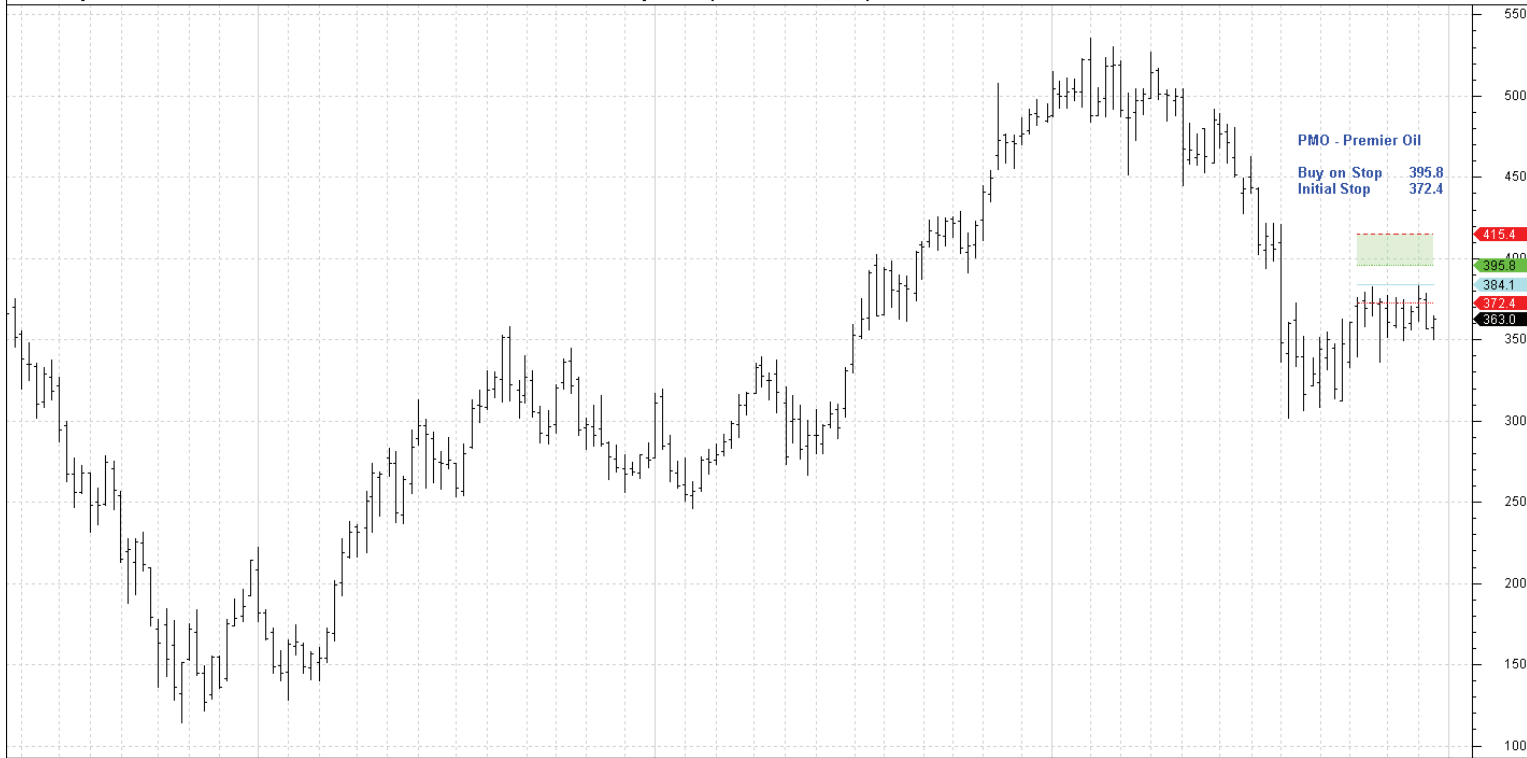
y Jun Jul Aug Sep Oct Nov Dec Jan Feb Mar Apr May Jun Jul Aug Sep Oct Nov Dec Jan Feb Mar Apr May Jun Jul Aug Sep Oct Nov Dec Jan 2008 2009 2010 2011 2012 © BullSystems www.bullsystems.com







y Jun Jul Aug Sep Oct Nov Dec Jan Feb Mar Apr May Jun Jul Aug Sep Oct Nov Dec Jan Feb Mar Apr May Jun Jul Aug Sep Oct Nov Dec Jan 2008 2009 2010 2011 201



y Jun Jul Aug Sep Oct Nov Dec Jan Feb Mar Apr May Jun Jul Aug Sep Oct Nov Dec Jan Feb Mar Apr May Jun Jul Aug Sep Oct Nov Dec Jan 2008 2009 2010 2011 201

