

Week Ending 6th April 2012

There were some exits this week on the New York Stock Exchange but most of the positions continued their upward journey albeit more slowly.

Have a great week all

New York Stock Exchange

Currency – USD\$

Entries: Accenture, VF Corporation

Exits: VF Corporation

The colour coding we are currently using is as follows:

Amended orders or stops

Retained Orders or stops – no change

New working orders

Immediate action required

Short Sell

Open Positions

Stops:	Code	Old	Action	New
--------	------	-----	--------	-----

Amended

Allergan Inc	AGN	88.62	Amend	89.36
American Express	AXP	54.405	Amend	55.52
Ball Corporation	BLL	39.04	Amend	39.64
CBS Corporation	CBS	30.36	Amend	30.89
Comercia	CMA	30.02	Amend	30.39
Harley Davidson	HOG	46.62	Amend	46.95
Nordstrom	JWN	52.89	Amend	53.48
McCormick	MKC	50.29	Amend	50.97
Priceline	PCLN	644.05	Amend	678.35
Qualcomm Int	QCOM	63.43	Amend	65.54
Raytheon Corporation	RTN	49.93	Retain	51.36
Stryker	SYK	52.07	Amend	52.88
Williams	WMB	28.23	Amend	28.53
Yum Brands	YUM	65.68	Amend	67.95

Retained

Accenture	ACN	62.35	Retain	62.35
BB&T Corporation	BBT	29.92	Retain	29.92
CBRE Group	CBG	18.76	Retain	18.76
CMS Energy	CMS	21.09	Retain	21.09
Walt Disney Corp	DIS	41.32	Retain	41.32
DTE Energy	DTE	53.07	Retain	53.07
Intercontinental Ex	ICE	134.30	Retain	134.30
JDS Uniphase	JDSU	12.41	Retain	12.41
Lockheed Martin	LMT	86.12	Retain	86.12
Northeast Utilities	NU	36.03	Retain	36.03
Praxair	PX	110.40	Retain	110.40
Scana Corporation	SCG	43.70	Retain	43.70
Sherwin Williams	SHW	101.80	Amend	103.00
Torchmark	TMK	47.41	Retain	47.41
Xcel Energy	XEL	25.89	Retain	25.89

Cancelled Orders

Working Orders

Company	Code	Direction	Entry	Stop
---------	------	-----------	-------	------

Amended

Dean Foods	DF	Buy	12.75	12.41
General Dynamics	GD	Buy	74.27	73.07
Plum Creek Timber	PCL	Buy	42.159	41.01
Spectra Energy	SE	Buy	32.25	31.71

Retained

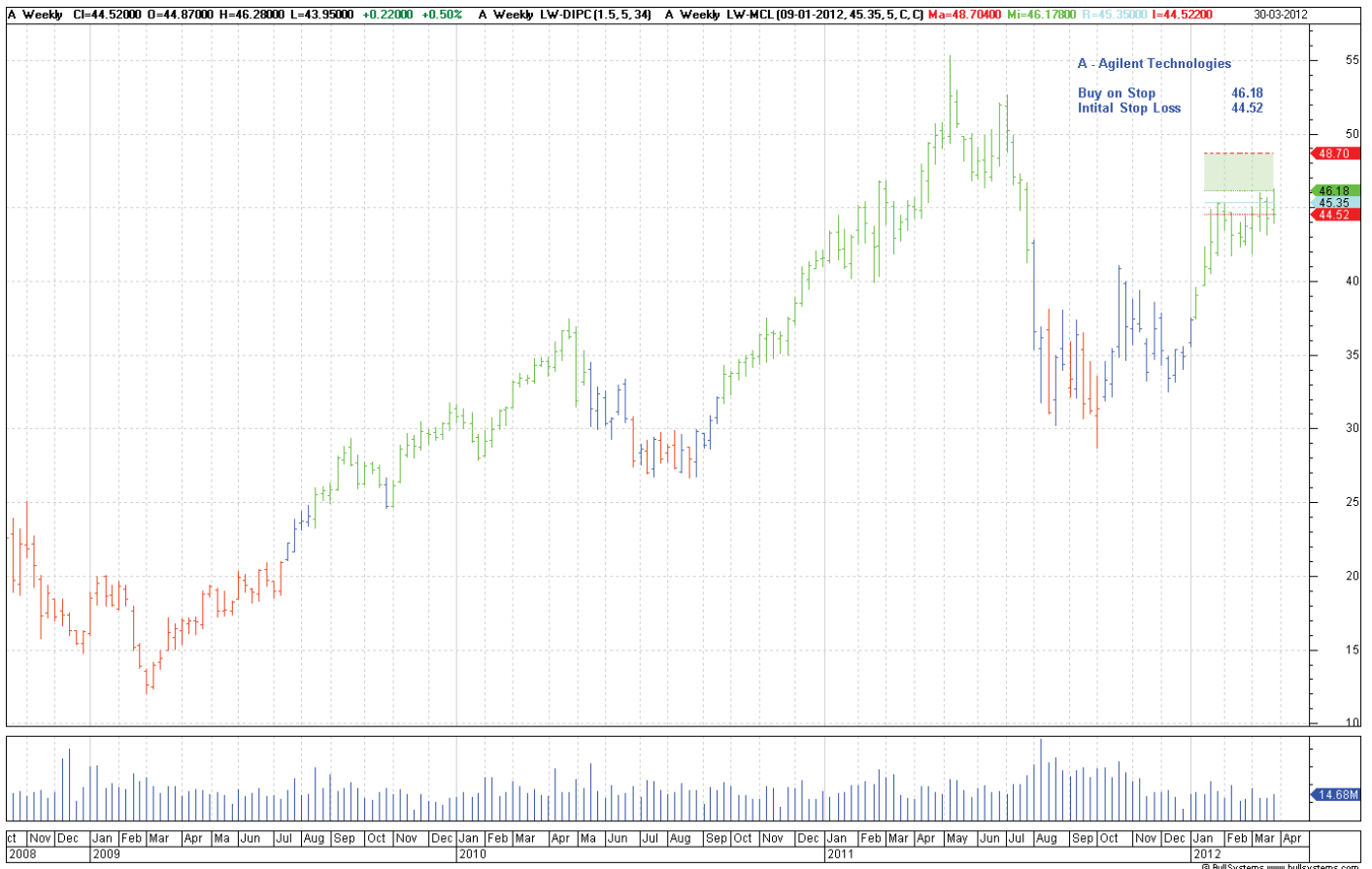
Nil

New

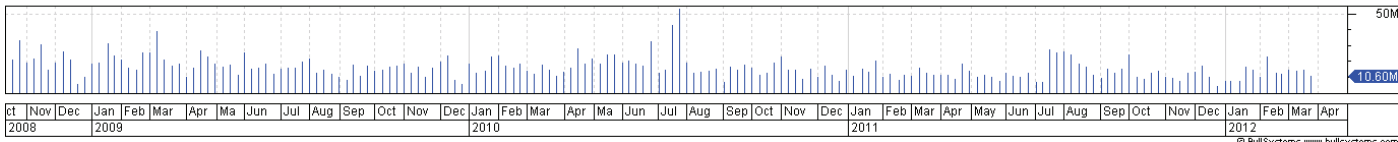
Agilent Corp	A	Buy	46.18	44.52
Amersourcebergen	ABC	Buy	41.06	39.38
Analog Devices	ADI	Buy	41.21	40.45

Avelonbay	AVB	Buy	142.4	137.4
McGraw-Hill Corp	MHP	Buy	48.48	47.22
JM Smucker	SJM	Buy	83.09	79.71
Sara Lee Corp	SLE	Buy	22.47	21.61
Titanium Metals	TIE	Sell	12.93	13.63

Charts



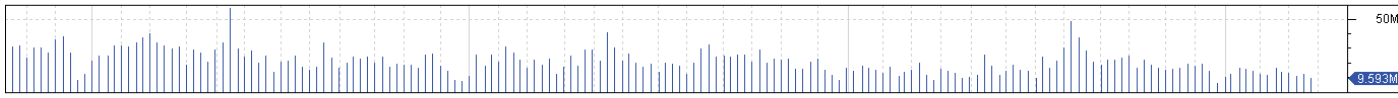
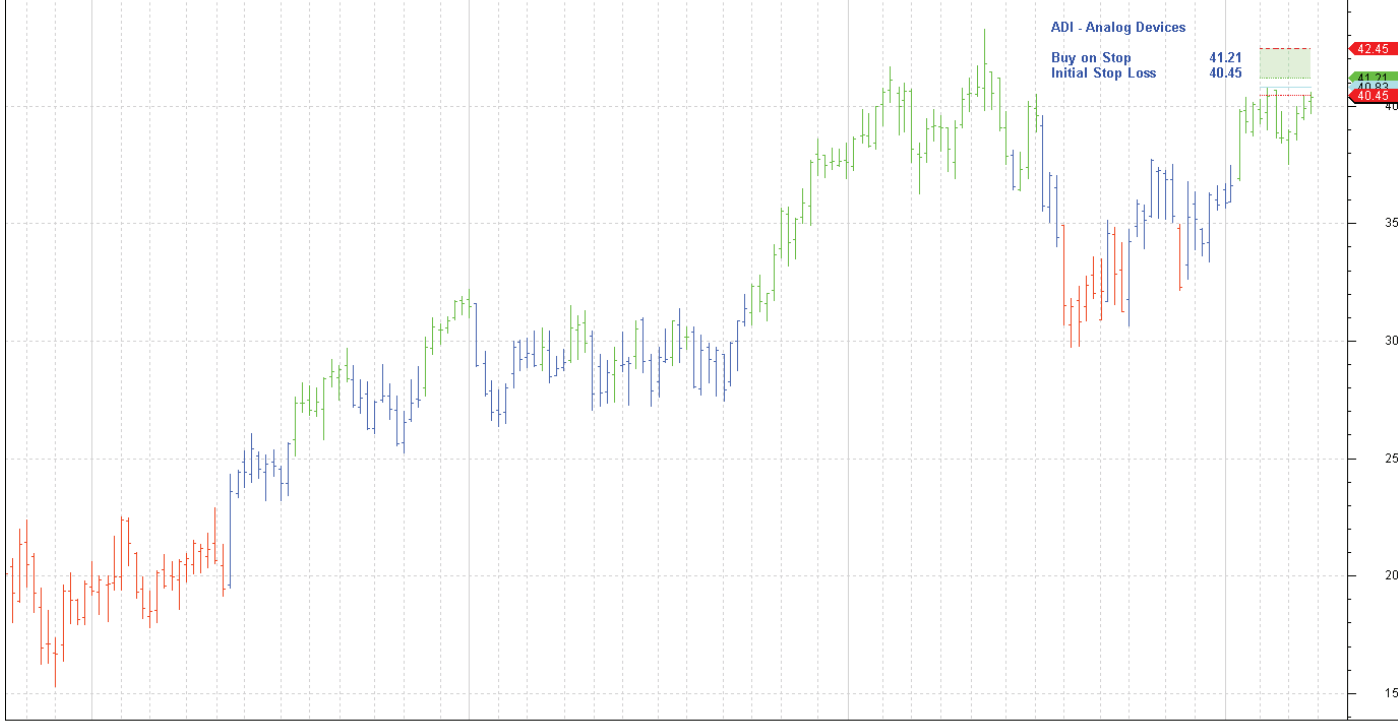
ABC Weekly CI=39.66000 O=39.15000 H=39.76000 L=38.83000 +0.70000 +1.80% ABC Weekly LW-DIPC(1.5,5,34) ABC Weekly LW-MCL(02-01-2012,40.22,5,C,C) Ma=42.24910 Mi=41.05600 R=40.22000 I=39.38 30-03-2012



ct Nov Dec Jan Feb Mar Apr Ma Jun Jul Aug Sep Oct Nov Dec Jan Feb Mar Apr May Jun Jul Aug Sep Oct Nov Dec Jan Feb Mar Apr
2008 2009 2010 2011 2012

© BullSystems www.bullsystems.com

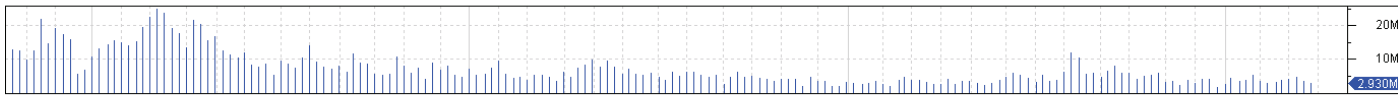
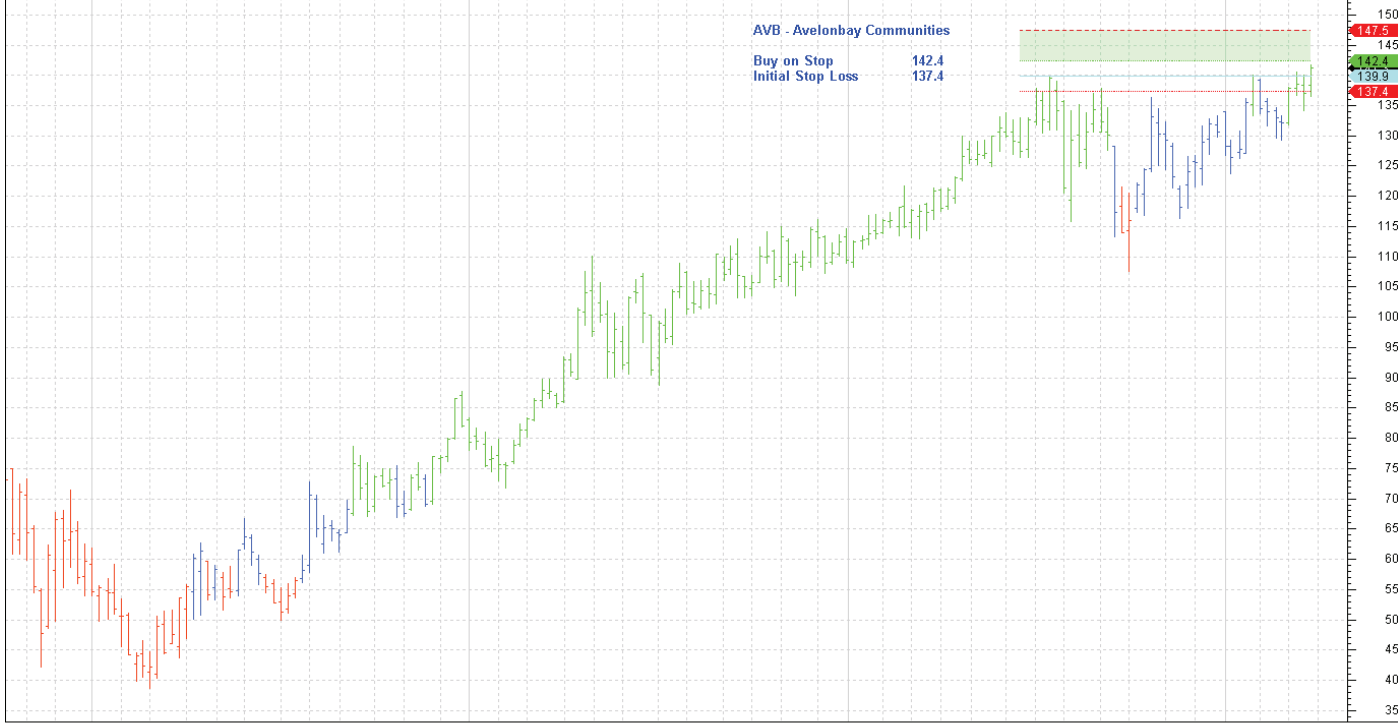
ADI Weekly CI=40.38000 O=40.20000 H=40.60000 L=39.67000 +0.46000 +1.15% ADI Weekly LW-DIPC(1.5,5,34) ADI Weekly LW-MCL(30-01-2012,40.83,5,C,C) Ma=42.45000 Mi=41.21200 R=40.83000 I=40.44800 30-03-2012



ct Nov Dec Jan Feb Mar Apr Ma Jun Jul Aug Sep Oct Nov Dec Jan Feb Mar Apr May Jun Jul Aug Sep Oct Nov Dec Jan Feb Mar Apr
2008 2009 2010 2011 2012

© BullSystems www.bullsystems.com

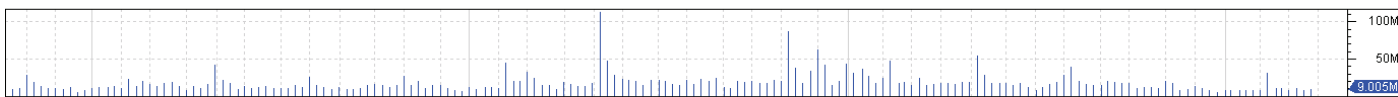
AVB Weekly CI=141.28000 O=138.32000 H=141.69000 L=136.48000 +4.19000 +3.06% AVB Weekly LW-DIPC(1.5, 5, 34) AVB Weekly LW-MCL(13-06-2011, 139.91, 5, C, C) Ma=147.46200 Mi=142.43400 R=139.91000 30-03-2012



ct Nov Dec Jan Feb Mar Apr Ma Jun Jul Aug Sep Oct Nov Dec Jan Feb Mar Apr May Jun Jul Aug Sep Oct Nov Dec Jan Feb Mar Apr
2008 2009 2010 2011 2012

© BullSystems www.bullsystems.com

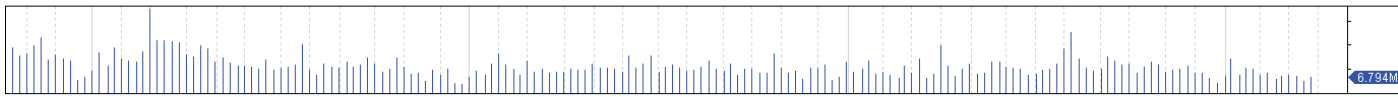
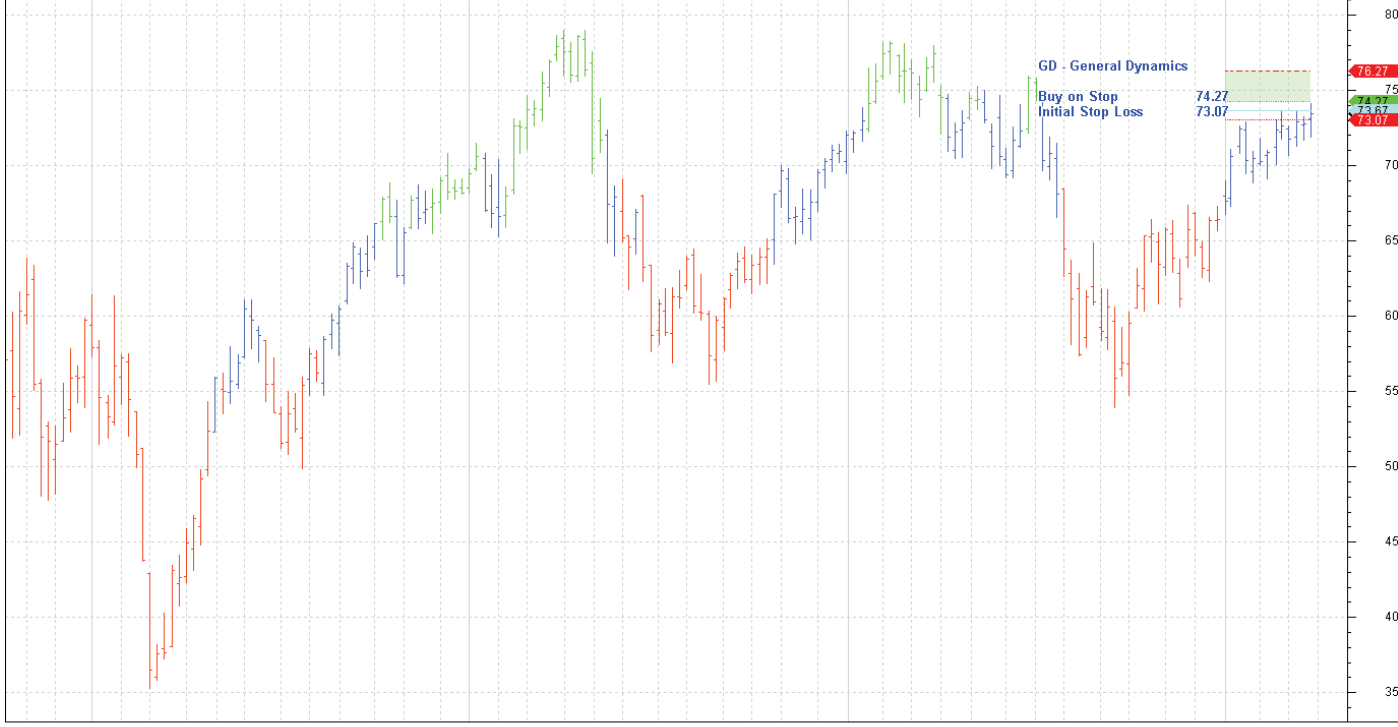
DF Weekly CI=12.11000 O=12.30000 H=12.47000 L=11.95000 -0.19000 -1.06% DF Weekly LW-DIPC(1.5, 5, 34) DF Weekly LW-MCL(30-01-2012, 12.58, 5, C, C) Ma=13.21700 Mi=12.75000 R=12.58000 I=12.41000 30-03-2012



ct Nov Dec Jan Feb Mar Apr Ma Jun Jul Aug Sep Oct Nov Dec Jan Feb Mar Apr May Jun Jul Aug Sep Oct Nov Dec Jan Feb Mar Apr
2008 2009 2010 2011 2012

© BullSystems www.bullsystems.com

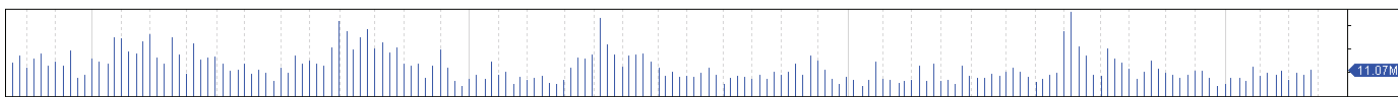
GD Weekly CI=73.42000 O=73.09000 H=74.15000 L=71.88000 +0.64000 +0.88% GD Weekly LW-DIPC(1.5, 5, 34) GD Weekly LW-MCL(26-12-2011, 73.67, 5, C, C) Ma=76.26500 Mi=74.27000 R=73.67000 I=73.07000 30-03-2012



ct Nov Dec Jan Feb Mar Apr Ma Jun Jul Aug Sep Oct Nov Dec Jan Feb Mar Apr Ma Jun Jul Aug Sep Oct Nov Dec Jan Feb Mar Apr
2008 2009 2010 2011 2012

© BullSystems www.bullsystems.com

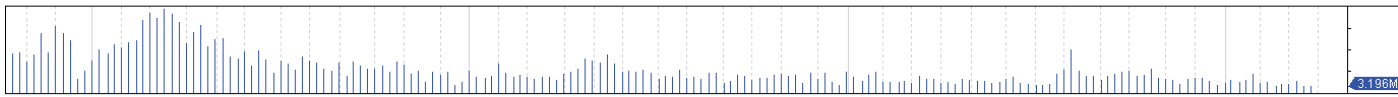
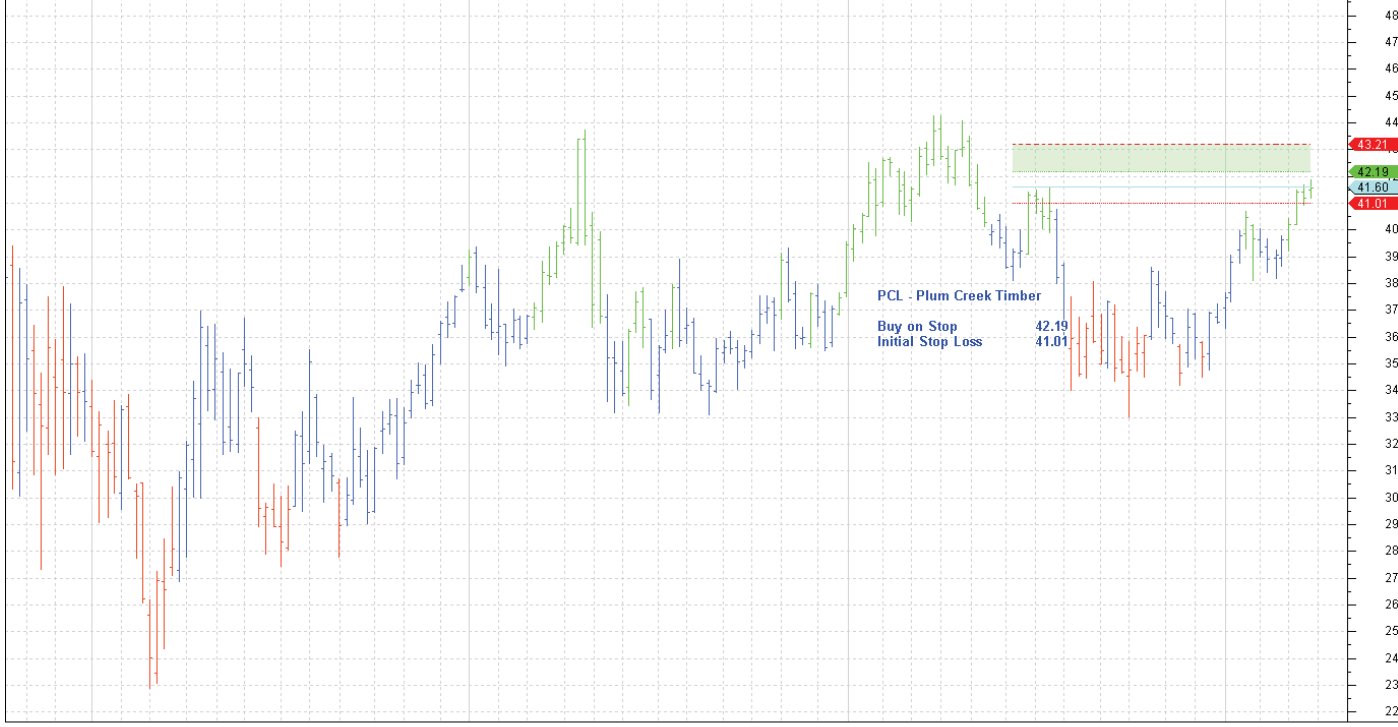
MHP Weekly CI=48.44000 O=47.39000 H=48.60000 L=46.80000 +1.26000 +2.67% MHP Weekly LW-DIPC(1.5, 5, 34) MHP Weekly LW-MCL(19-12-2011, 47.85, 5, C, C) Ma=49.86398 Mi=48.47600 R=47.85900 I=47.22 30-03-2012



ct Nov Dec Jan Feb Mar Apr Ma Jun Jul Aug Sep Oct Nov Dec Jan Feb Mar Apr Ma Jun Jul Aug Sep Oct Nov Dec Jan Feb Mar Apr
2008 2009 2010 2011 2012

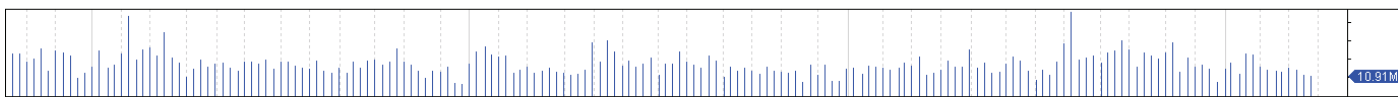
© BullSystems www.bullsystems.com

PCL Weekly CI=41.56000 O=41.51000 H=41.86000 L=41.18000 +0.36000 +0.87% PCL Weekly LW-DIPC(1.5,5,34) PCL Weekly LW-MCL(06-06-2011,41.6,5,C,C) Ma=43.21200 Mi=42.19400 R=41.60000 I=41.0060 30-03-2012



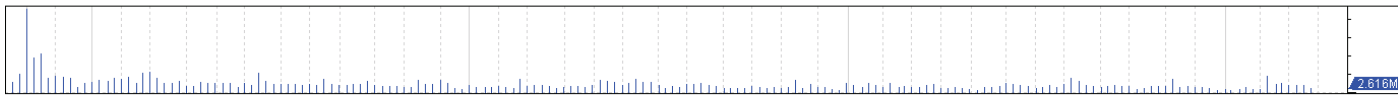
ct Nov Dec Jan Feb Mar Apr Ma Jun Jul Aug Sep Oct Nov Dec Jan Feb Mar Apr May Jun Jul Aug Sep Oct Nov Dec Jan Feb Mar Apr
2008 2009 2010 2011 2012
© BullSystems www.bullsystems.com

SE Weekly CI=31.55000 O=31.79000 H=32.22000 L=31.12000 -0.09000 -0.28% SE Weekly LW-DIPC(1.5,5,34) SE Weekly LW-MCL(09-01-2012,31.98,5,C,C) Ma=33.02398 Mi=32.25200 R=31.98000 I=31.70000 30-03-2012



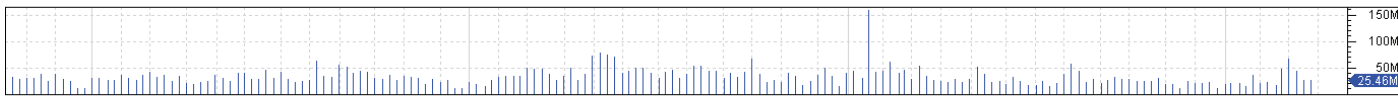
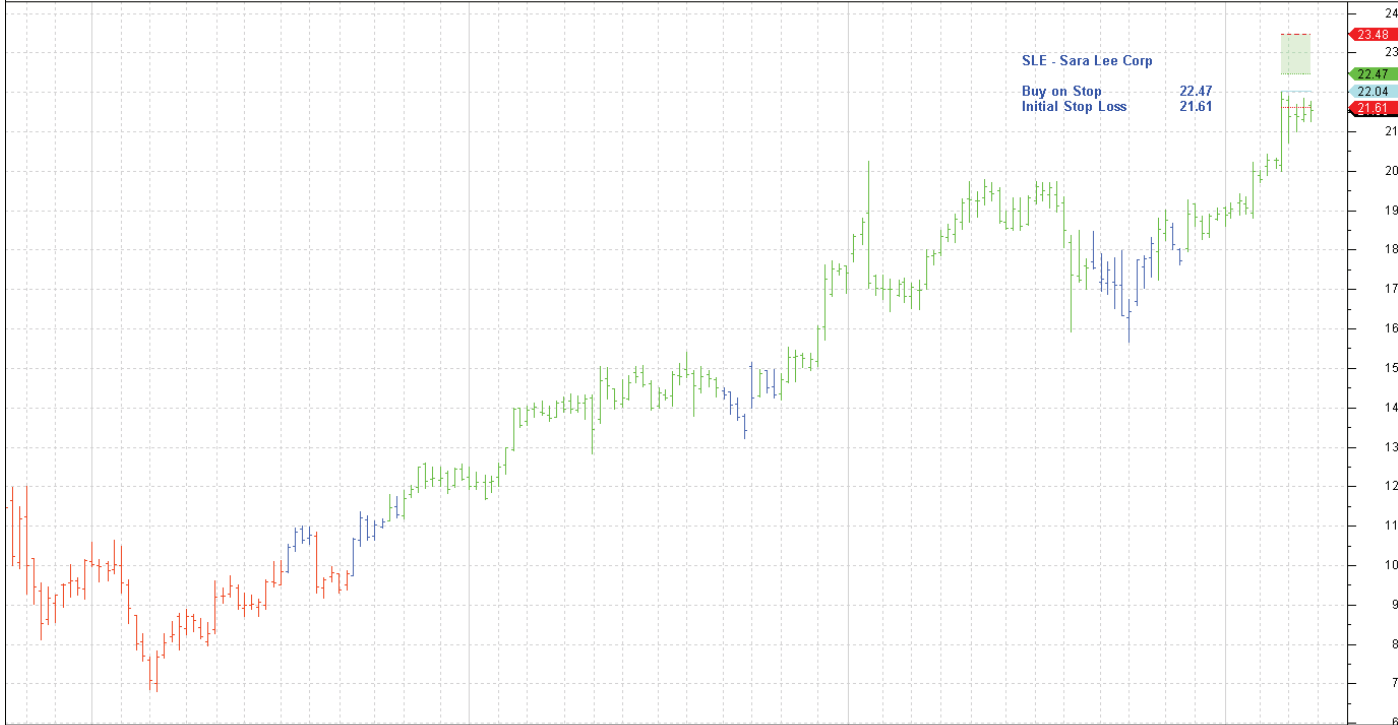
ct Nov Dec Jan Feb Mar Apr Ma Jun Jul Aug Sep Oct Nov Dec Jan Feb Mar Apr May Jun Jul Aug Sep Oct Nov Dec Jan Feb Mar Apr
2008 2009 2010 2011 2012
© BullSystems www.bullsystems.com

SJM Weekly CI=81.36000 O=80.31000 H=81.66000 L=79.94000 +1.36000 +1.70% SJM Weekly LW-DIPC(1.5,5,34) SJM Weekly LW-MCL(26-12-2011,81.4,5,C,C) Ma=85.59200 Mi=83.08800 R=81.40000 I=79.7120 30-03-2012



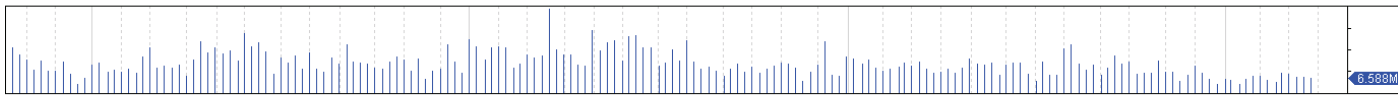
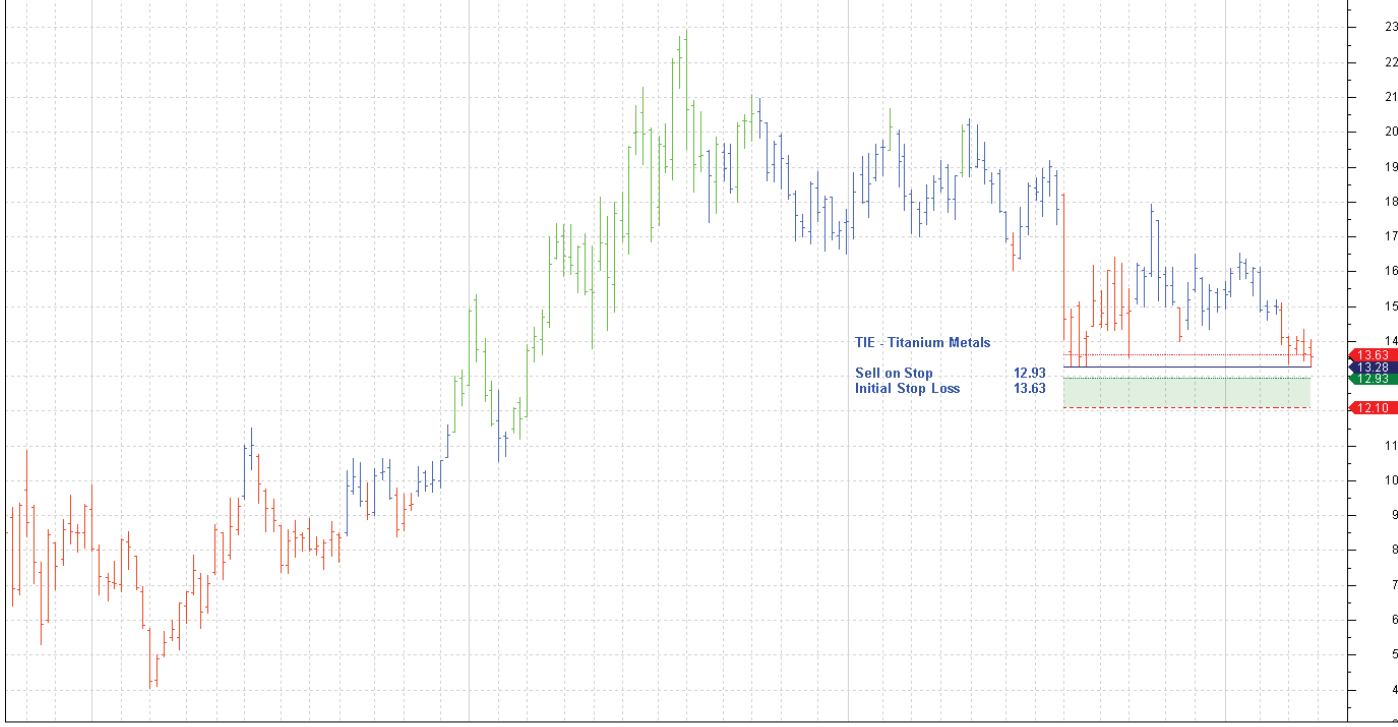
ct Nov Dec Jan Feb Mar Apr Ma Jun Jul Aug Sep Oct Nov Dec Jan Feb Mar Apr Ma Jun Jul Aug Sep Oct Nov Dec Jan Feb Mar Apr
 2008 2009 2010 2011 2012
 @ BullSystems www.bullsystems.com

SLE Weekly CI=21.53000 O=21.66000 H=21.78000 L=21.25000 +0.08000 +0.37% SLE Weekly LW-DIPC(1.5,5,34) SLE Weekly LW-MCL(20-02-2012,22.04,5,C,C) Ma=23.47800 Mi=22.47200 R=22.04000 I=21.608 30-03-2012



ct Nov Dec Jan Feb Mar Apr Ma Jun Jul Aug Sep Oct Nov Dec Jan Feb Mar Apr Ma Jun Jul Aug Sep Oct Nov Dec Jan Feb Mar Apr
 2008 2009 2010 2011 2012
 @ BullSystems www.bullsystems.com

TIE Weekly Cl=13.56000 O=13.81000 H=14.05000 L=13.30000 -0.08000 -0.59% TIE Weekly LW-DIPC(1.5,5,34) TIE Weekly LW-MCS(25-07-2011,13.28,5,C,C) Ma=12.09600 Mi=12.93400 S=13.28000 I=13.62600 30-03-2012



ct	Nov	Dec	Jan	Feb	Mar	Apr	Ma	Jun	Jul	Aug	Sep	Oct	Nov	Dec	Jan	Feb	Mar	Apr	Ma	Jun	Jul	Aug	Sep	Oct	Nov	Dec	Jan	Feb	Mar	Apr
2008	2009		2010												2011				2012											