

Week Ending 11<sup>th</sup> May 2012

NYSE has presented several new possible opportunities for the coming week, and seems to have settled down a little from the previous couple of weeks

Plum Creek Timber didn't enter the previous week

Have a great week all

## New York Stock Exchange

### Currency – USD\$

Entries: American Tower, Coca Cola, Ingersoll Rand, Marsh & McLennan, Sara Lee,

Exits: Ball Corporation, Coca Cola, Covidien, Lockheed Martin, Pitney Bowes Inc, Sara Lee

The colour coding we are currently using is as follows:

Amended orders or stops

Retained Orders or stops – no change

New working orders

Immediate action required

Short Sell

### Open Positions

---

Stops:	Code	Old	Action	New
--------	------	-----	--------	-----

#### Amended

Avelonbay	AVB	138.2	Amend	141.72
American Express	AXP	56.01	Amend	57.02
CBS Corporation	CBS	30.89	Amend	31.53
CMS Energy	CMS	21.09	Amend	21.52
DTE Energy	DTE	53.07	Amend	53.53
McCormick	MKC	53.13	Amend	53.57

#### Retained

Allergan Inc	AGN	90.62	Retain	90.62
American Tower	AMT	63.78	Retain	63.78
Ingersoll Rand	IR	40.97	Retain	40.97
JDS Uniphase	JDSU	12.41	Retain	12.41
Marsh & McLennan	MMC	32.91	Retain	32.91
McGraw-Hill Corp	MHP	47.22	Retain	47.22
Sherwin Williams	SHW	113.6	Retain	113.6
Williams	WMB	31.09	Retain	31.09
Yum Brands	YUM	68.98	Retain	68.98

## Cancelled Orders

### Crown Holdings

## Working Orders

Company	Code	Direction	Entry	Stop
---------	------	-----------	-------	------

## Amended

Omnicom Group	OMC	Buy	52.24	50.26
Precision Castparts Corp	PCP	Buy	182.3	176.7
Snap On Inc	SNA	Buy	65.78	62.94

## Retained

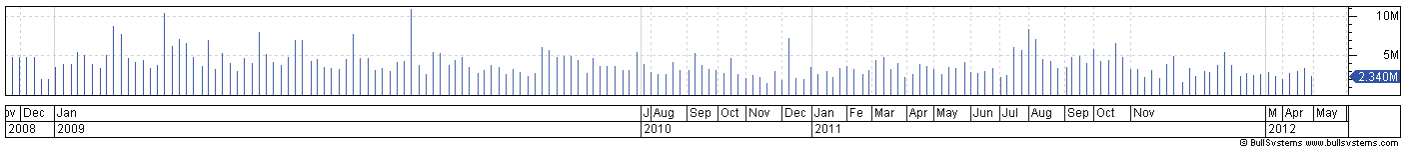
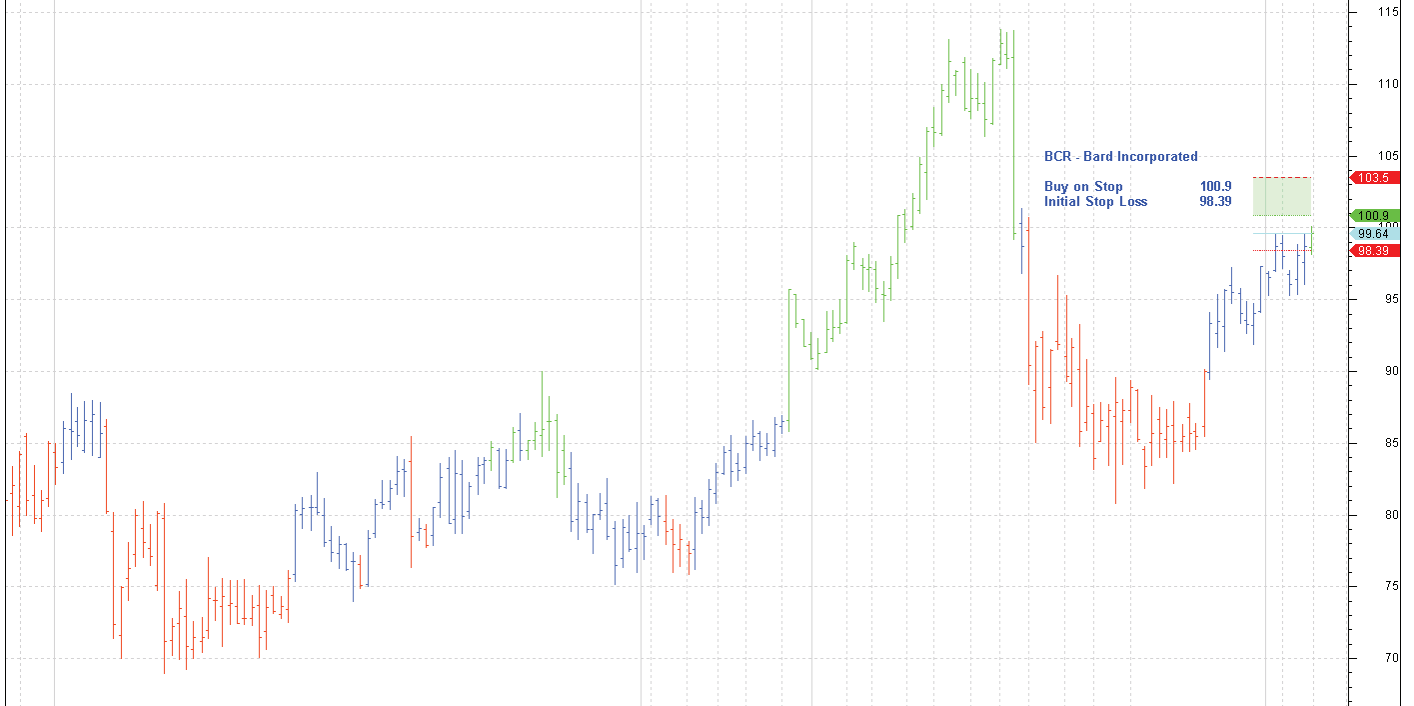
Nil

## New

Bard Incorporated	BCR	Buy	100.9	98.39
Campbells Soups	CPB	Buy	34.29	33.59
FirstEnergy	FE	Buy	47.21	45.81

## Charts

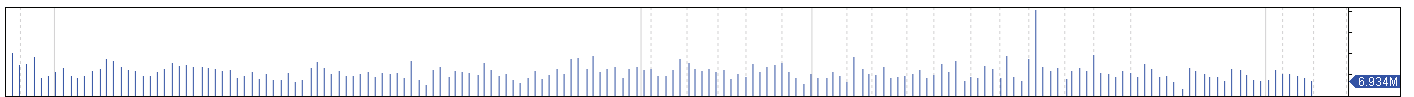
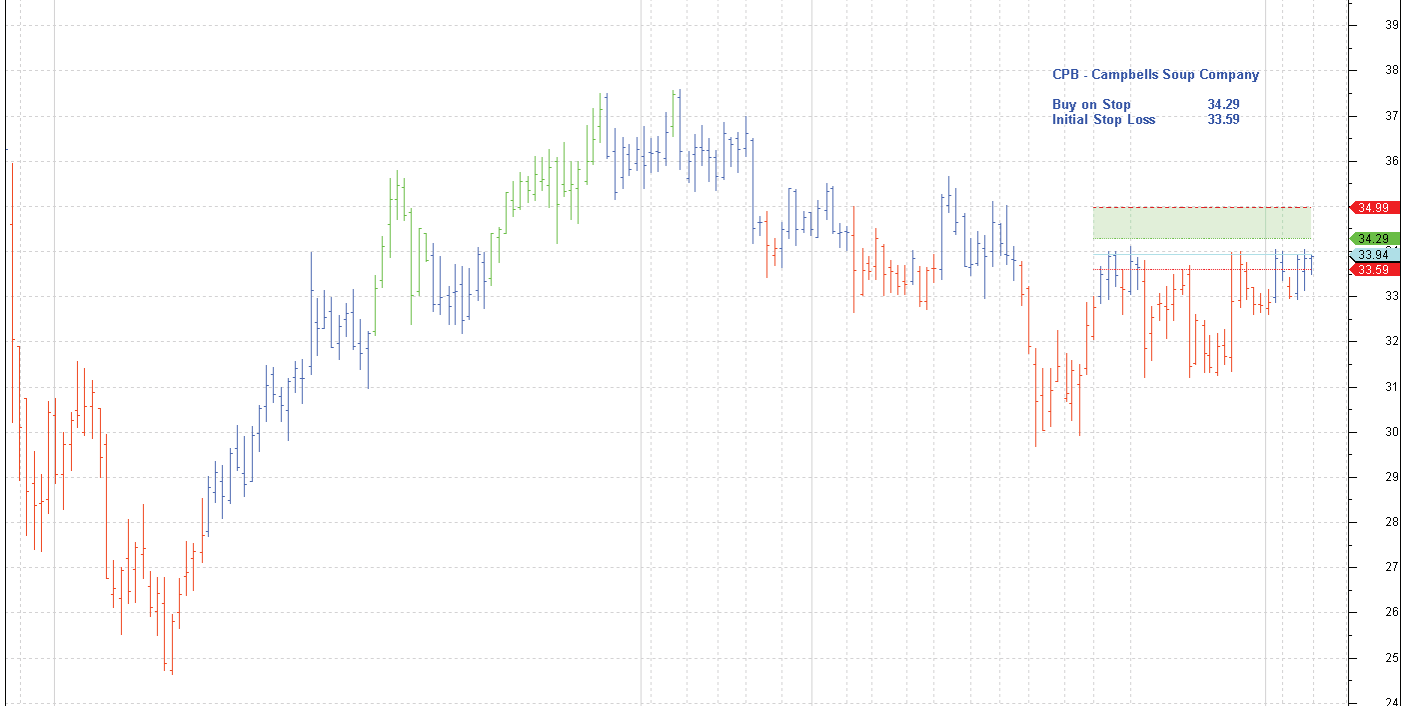
BCR Weekly CI=99.58000 O=98.66000 H=100.13000 L=98.14000 +0.87000 +0.88% BCR Weekly LW-DIPC(1.5,5,34) BCR Weekly LW-MCL(27-02-2012,99.64,5,C,C) Ma=103.49700 Mi=100.88800 R=99.64000 I=98.392 04-05-2012



yr | Dec | Jan | J | Aug | Sep | Oct | Nov | Dec | Jan | Fe | Mar | Apr | May | Jun | Jul | Aug | Sep | Oct | Nov | M | Apr | May |  
2008 | 2009 | 2010 | 2011 | 2012

© BullSystems www.bullsystems.com

CPB Weekly CI=33.90000 O=33.85000 H=33.94500 L=33.49000 +0.05000 +0.15% CPB Weekly LW-DIPC(1.5,5,34) CPB Weekly LW-MCL(26-09-2011,33.94,5,C,C) Ma=34.90600 Mi=34.20600 R=33.94000 I=33.59400 04-05-2012



yr | Dec | Jan | J | Aug | Sep | Oct | Nov | Dec | Jan | Fe | Mar | Apr | May | Jun | Jul | Aug | Sep | Oct | Nov | M | Apr | May |  
2008 | 2009 | 2010 | 2011 | 2012

© BullSystems www.bullsystems.com

