

Hello everyone,

The US market has consolidated well and is presenting some new opportunities for the coming weeks, we have 4 new possible orders for this week

New York Stock Exchange Group – NYSE Group entered this past week

Have a great week all

NYSE

Entries: NYSE Group

Exits:

The colour coding we are currently using is as follows:

Amended orders or stops

Retained Orders or stops – no change

New working orders

Immediate action required

Short Sell

Open Positions

Stops:		Old	Action	New
--------	--	-----	--------	-----

Amended

Fidelity National	FIS	\$27.15	Retain	\$26.785
EOG Resources	EOG	\$89.23	Retain	\$85.99
Regions Fing	RF	\$4.02	Retain	\$25.45

Retained

NYSE Group	NYX	\$26.31	Retain	\$26.31
US Steel Corp	X	\$26.77	Retain	\$27.15

Cancelled Orders

Working Orders

Company	Code	Direction	Entry	Stop
---------	------	-----------	-------	------

Amended

PP & L Inc	PPL	Buy	\$29.51	\$28.61
State Street	STT	Sell	\$29.56	\$33.14

Retained

Futures

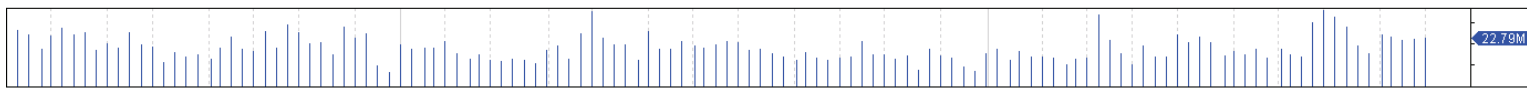
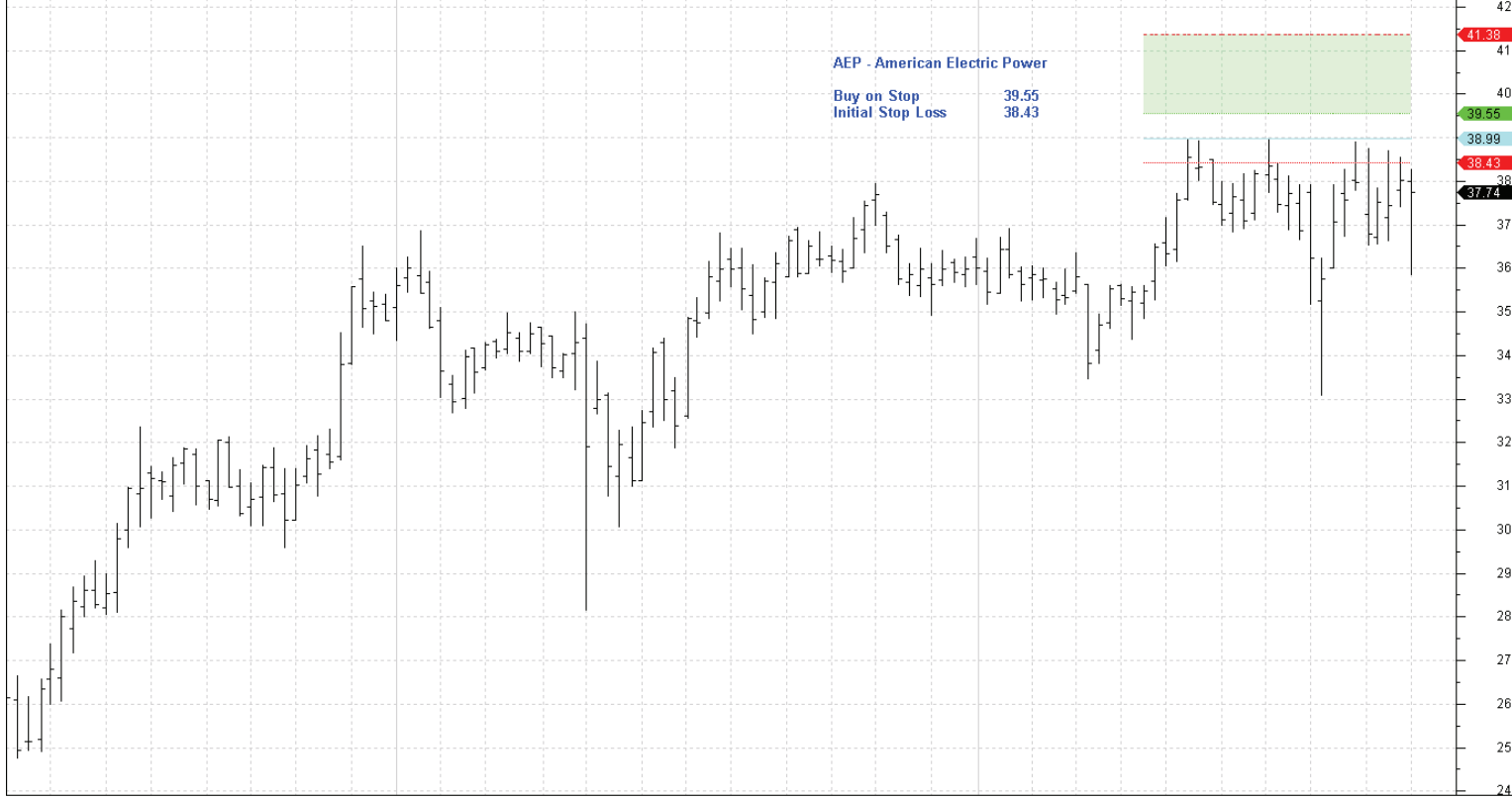
Nil

Company	Code	Direction	Entry	Stop
---------	------	-----------	-------	------

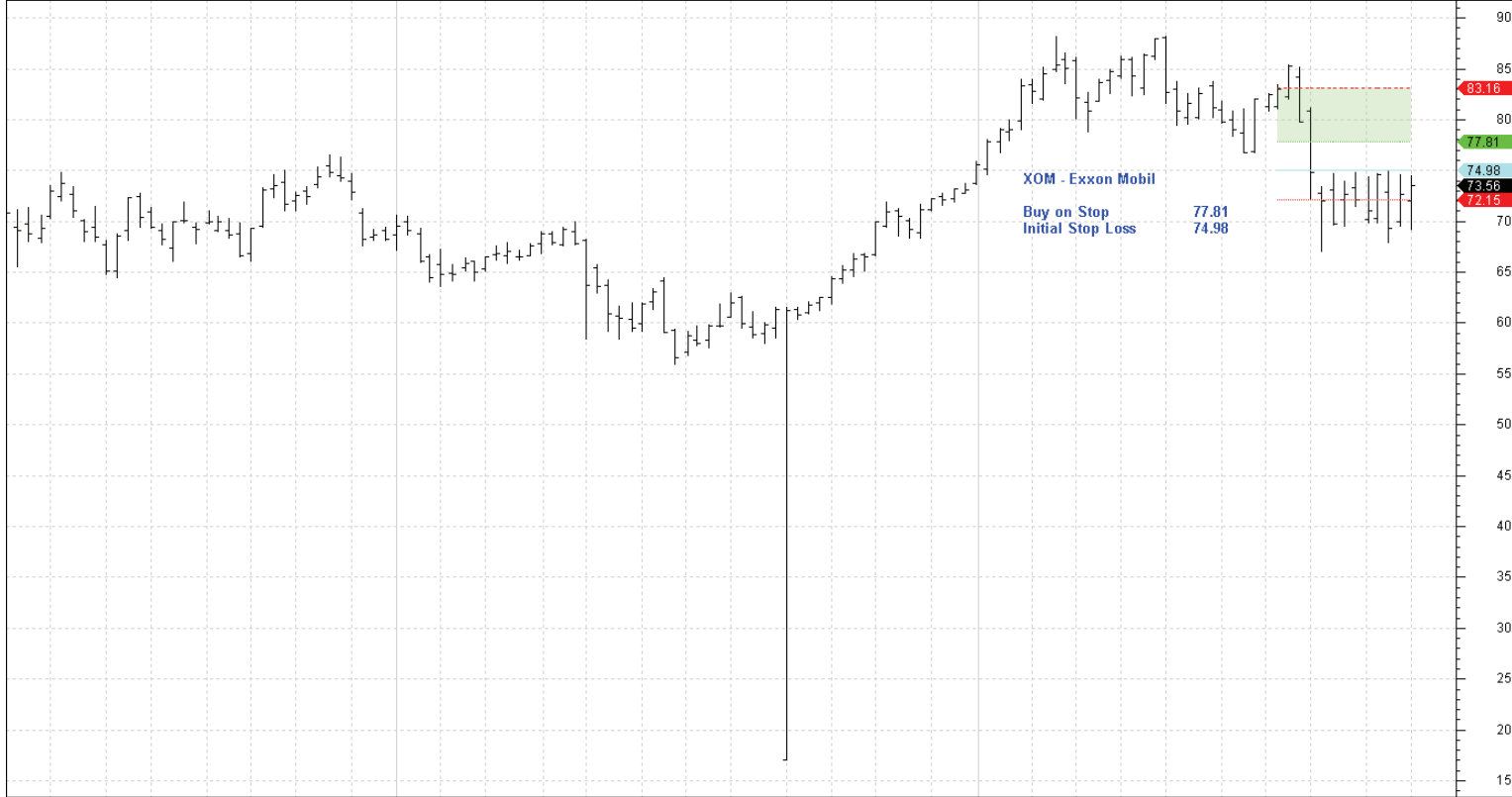
New

American Electric Power	AEP	Buy	39.55	38.43
Exxon Mobil	XPM	Buy	27.81	24.98
Lorillard Incorporated	LO	Buy	121.4	116.9
Lowes	LOW	Buy	21.37	19.97

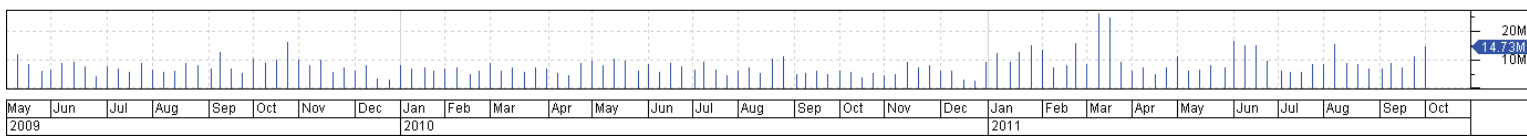
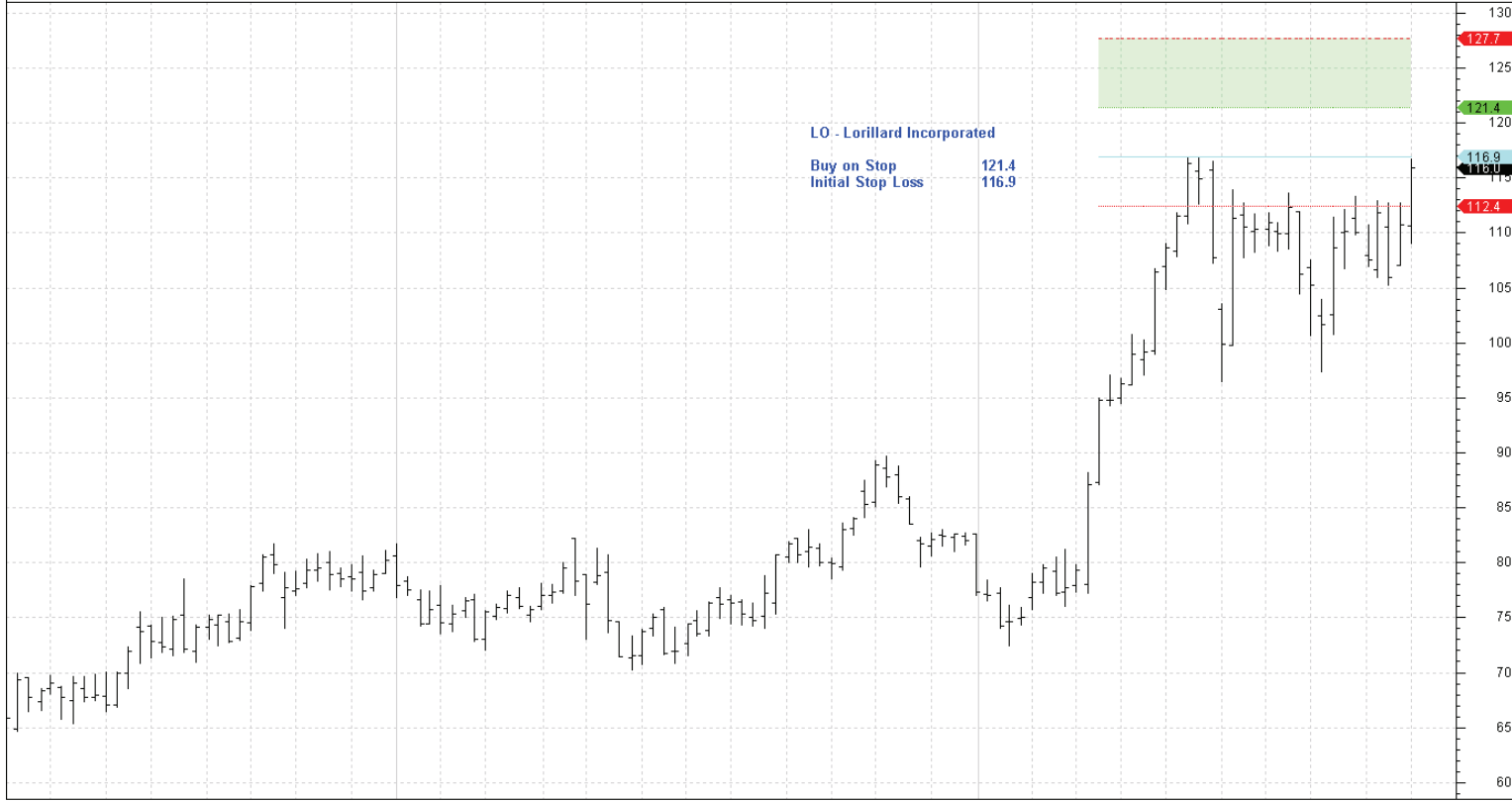
See below for charts



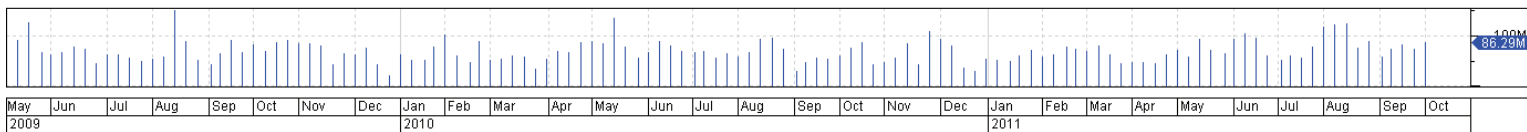
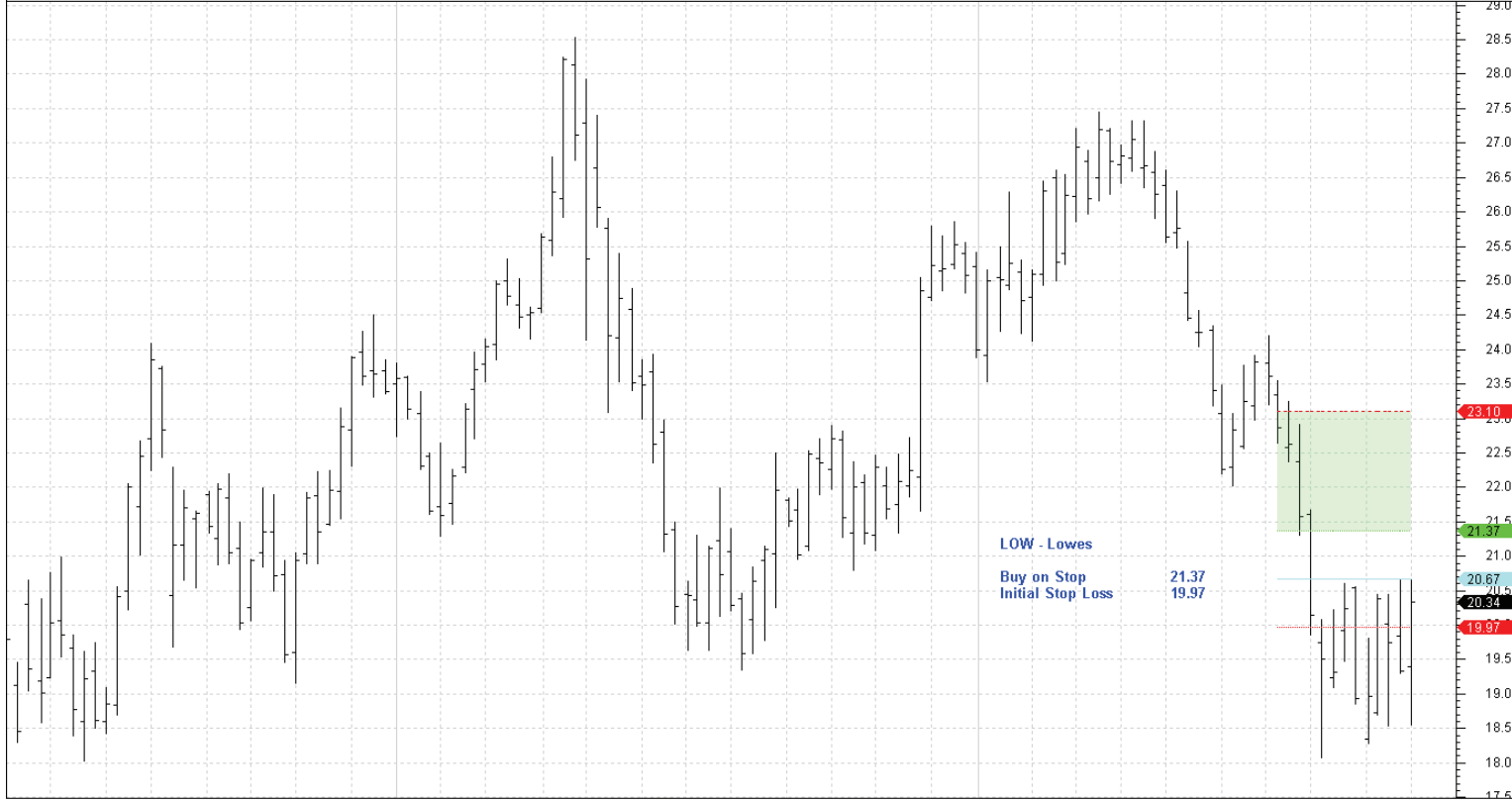
May 2009 Jun Jul Aug Sep Oct Nov Dec 2010 Jan Feb Mar Apr May Jun Jul Aug Sep Oct 2011



May 2009 Jun Jul Aug Sep Oct Nov Dec 2010 Jan Feb Mar Apr May Jun Jul Aug Sep Oct 2011



May 2009 Jun Jul Aug Sep Oct Nov Dec 2010 Jan Feb Mar Apr May Jun Jul Aug Sep Oct Nov Dec 2011



May 2009 Jun Jul Aug Sep Oct Nov Dec 2010 Jan Feb Mar Apr May Jun Jul Aug Sep Oct 2011

