

Week Ending 6th January 2012

The US markets saw significant rises this week and resulted in 1entry. The week also saw good increases in prices of the open positions also

Have a great week all

New York Stock Exchange

Currency – USD\$

Entries: Yum Brands

Exits: Nil

The colour coding we are currently using is as follows:

Amended orders or stops

Retained Orders or stops – no change

New working orders

Immediate action required

Short Sell

Open Positions

Stops:	Code	Old	Action	New
<u>Amended</u>				
American Electric	AEP	39.11	Amend	39.21
Exxon Mobil	XOM	75.16	Amend	76.425
Lowes	LOW	23.60	Amend	23.80
Philip Morris	PM	71.35	Amend	76.09
Scana Corporation	SCG	42.28	Amend	43.70
<u>Retained</u>				
DTE Energy	DTE	51.57	Retain	51.57
Sherwin Williams	SHW	86.24	Retain	86.24
Xcel Energy	XEL	25.89	Retain	25.89
Yum Brands	YUM	56.16	Retain	56.16

Cancelled Orders

Nil

Working Orders

Company Code Direction Entry Stop

Amended

Alcoa	AA	Sell	8.076	9.004
Abbott Labs	ABT	Buy	56.45	54.77
Avery Dennison	AVY	Buy	30.03	27.39
Congara Foods	CAG	Buy	27.27	25.93
Constellation Energy	CEG	Buy	40.74	39.70
Cigna	CI	Sell	39.30	41.18
Dominion Resources	D	Buy	53.44	51.92
General Mills	GIS	Buy	41.03	39.47
Health Care Prop Investors	HCP	Buy	41.82	39.68
Hershey Foods	HSY	Buy	62.24	59.68
International Flavour & Frag	IFF	Sell	50.08	52.82
Kimberly Clark	KMB	Buy	74.51	71.95
Legg Mason	LM	Sell	21.20	24.02
Merck & Co	MRK	Buy	38.64	36.66
Pfizer	PFE	Buy	22.16	20.74
Pepco Holdings	POM	Buy	20.74	19.94
JM Smucker	SJM	Buy	81.80	78.71
Integrays Energy Group	TEG	Buy	55.06	53.02
Water Corp	WAT	Sell	67.06	74.70

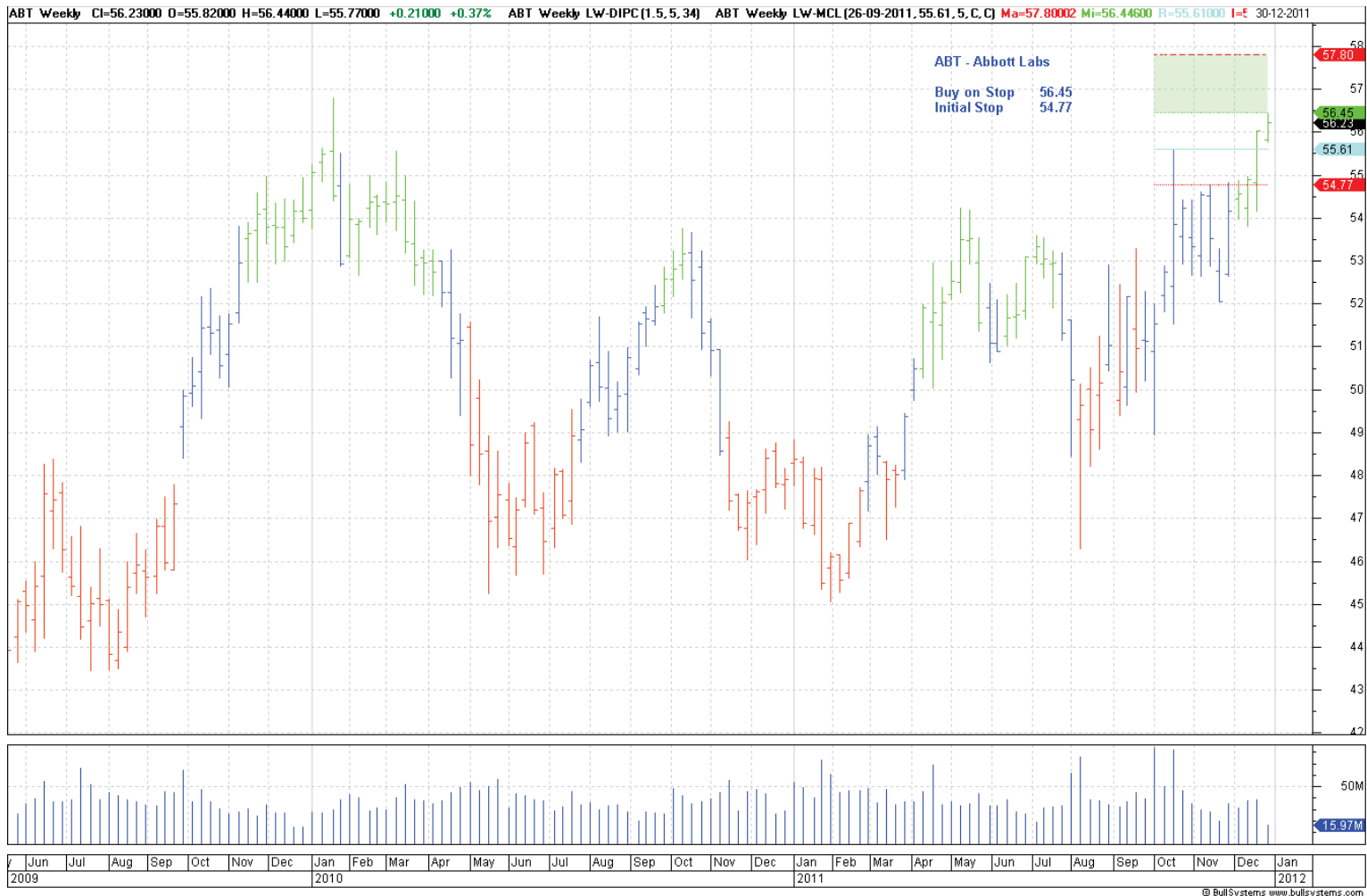
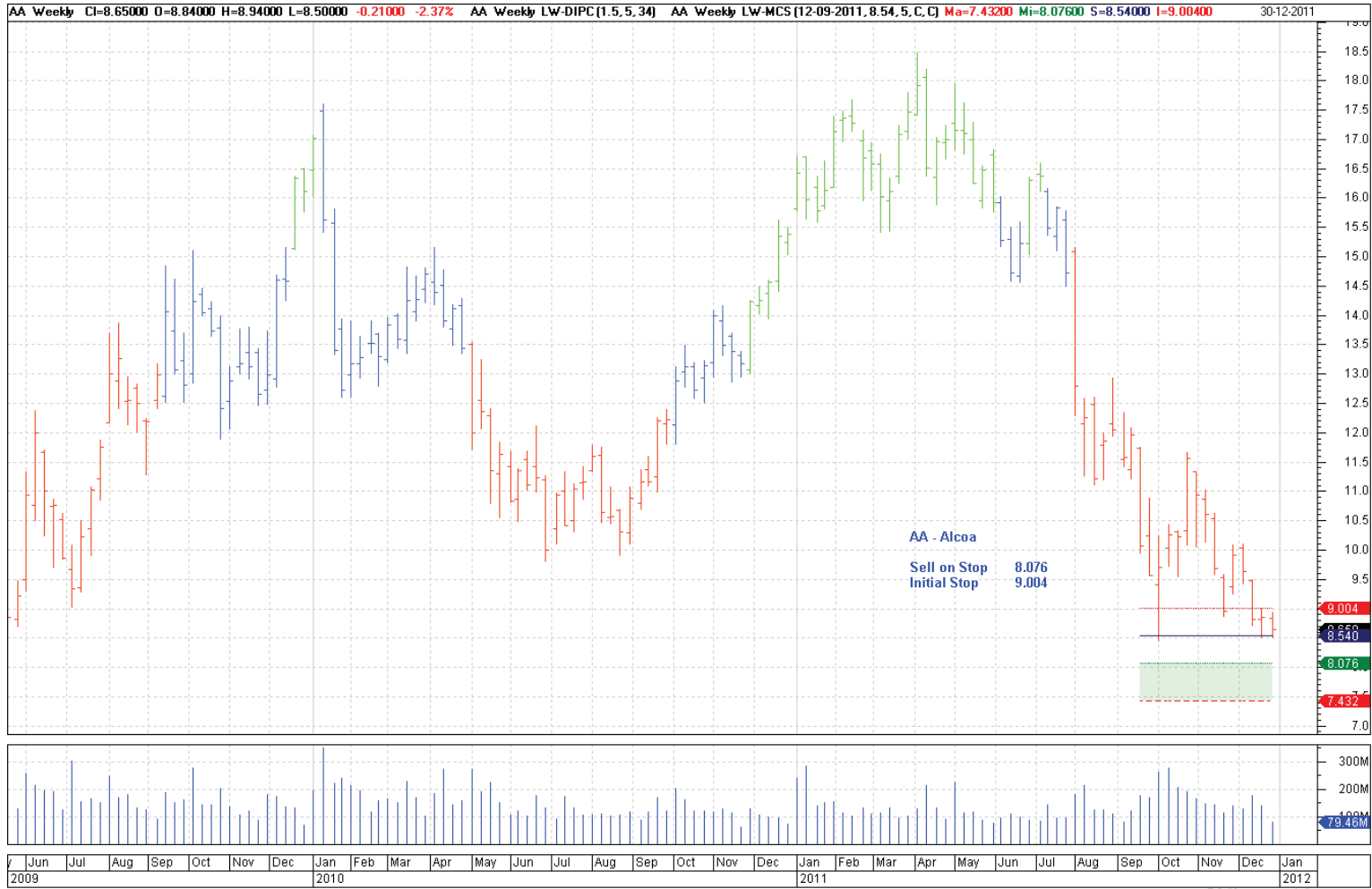
Retained

Nil

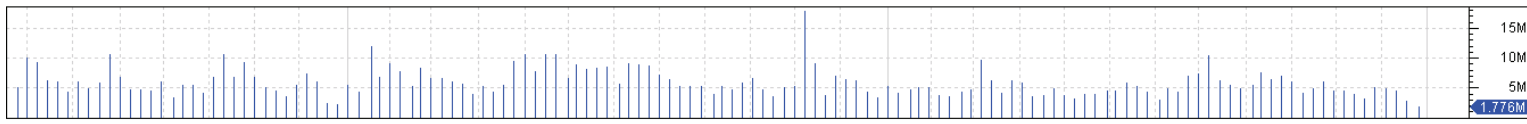
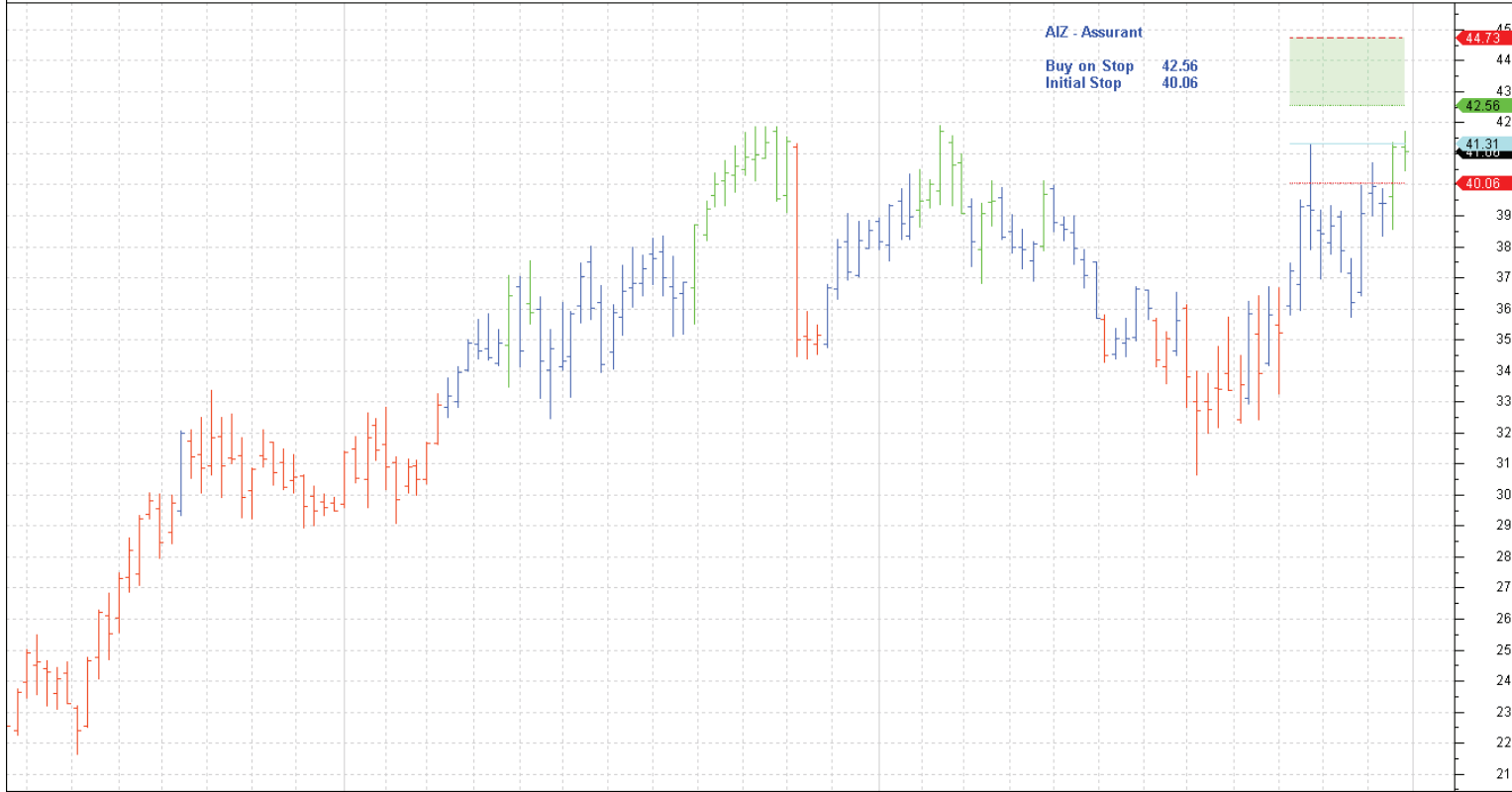
New

Assurant	AIZ	Buy	42.56	40.06
CBS Corporation	CBS	Buy	28.28	25.40
CMS Energy	CME	Buy	22.07	21.09
Conoco Phillips	COP	Buy	76.91	70.89
Health Care RT	HCN	Buy	56.55	53.87
Sempra Energy	SRE	Buy	56.95	54.99
Vulcan Materials	VMC	Buy	42.07	37.93

Charts



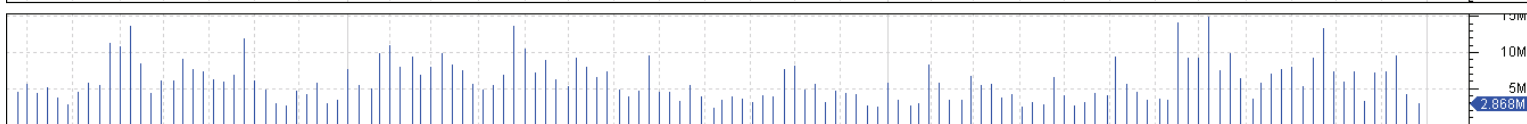
AIZ Weekly CI=41.0600 O=41.21000 H=41.73000 L=40.47000 -0.16000 -0.39% AIZ Weekly LW-DIPC(1.5,5,34) AIZ Weekly LW-MCL(03-10-2011,41.31,5,C,C) Ma=44.72700 Mi=42.55800 R=41.31000 I=40.0 30-12-2011



Jun 2009 Jul Aug Sep Oct Nov Dec 2010 Jan Feb Mar Apr May Jun Jul Aug Sep Oct Nov Dec 2011 Jan 2012

© BullSystems www.bullsystems.com

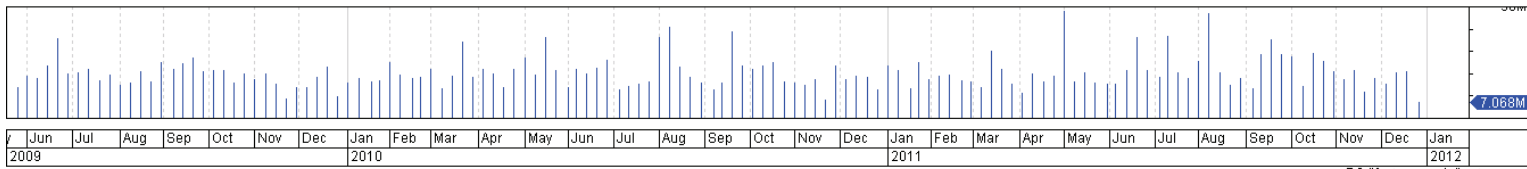
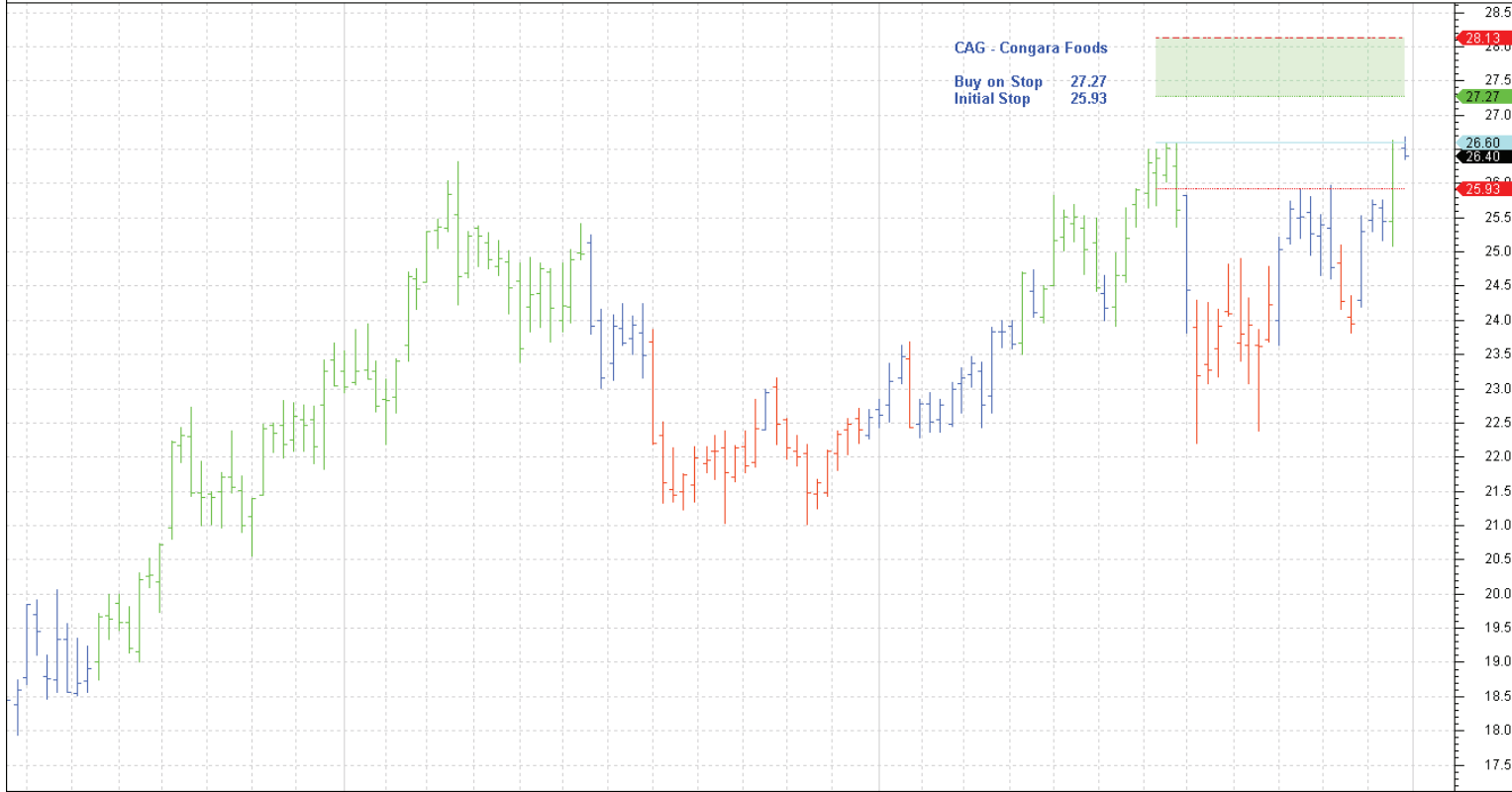
AVY Weekly CI=28.68000 O=28.47000 H=28.82000 L=28.28000 +0.04000 +0.14% AVY Weekly LW-DIPC(1.5,5,34) AVY Weekly LW-MCL(25-07-2011,28.71,5,C,C) Ma=31.76346 Mi=30.03200 R=28.71000 I= 30-12-2011



Jun 2009 Jul Aug Sep Oct Nov Dec 2010 Jan Feb Mar Apr May Jun Jul Aug Sep Oct Nov Dec 2011 Jan 2012

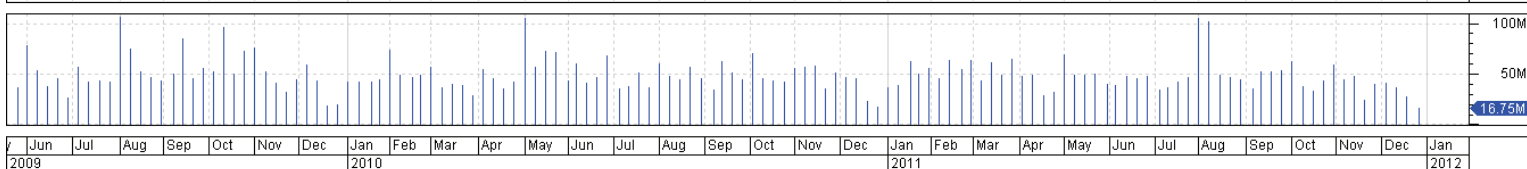
© BullSystems www.bullsystems.com

CAG Weekly CI=26.40000 O=26.51000 H=26.68000 L=26.34500 -0.20000 -0.75% CAG Weekly LW-DIPC(1.5, 5, 34) CAG Weekly LW-MCL(04-07-2011, 26.6, 5, C, C) Ma=28.12600 Mi=27.27000 R=26.60000 I=2 30-12-2011



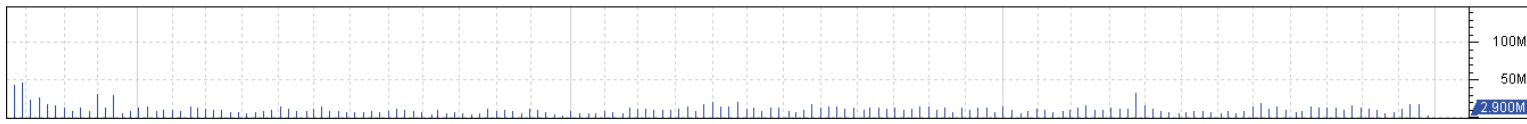
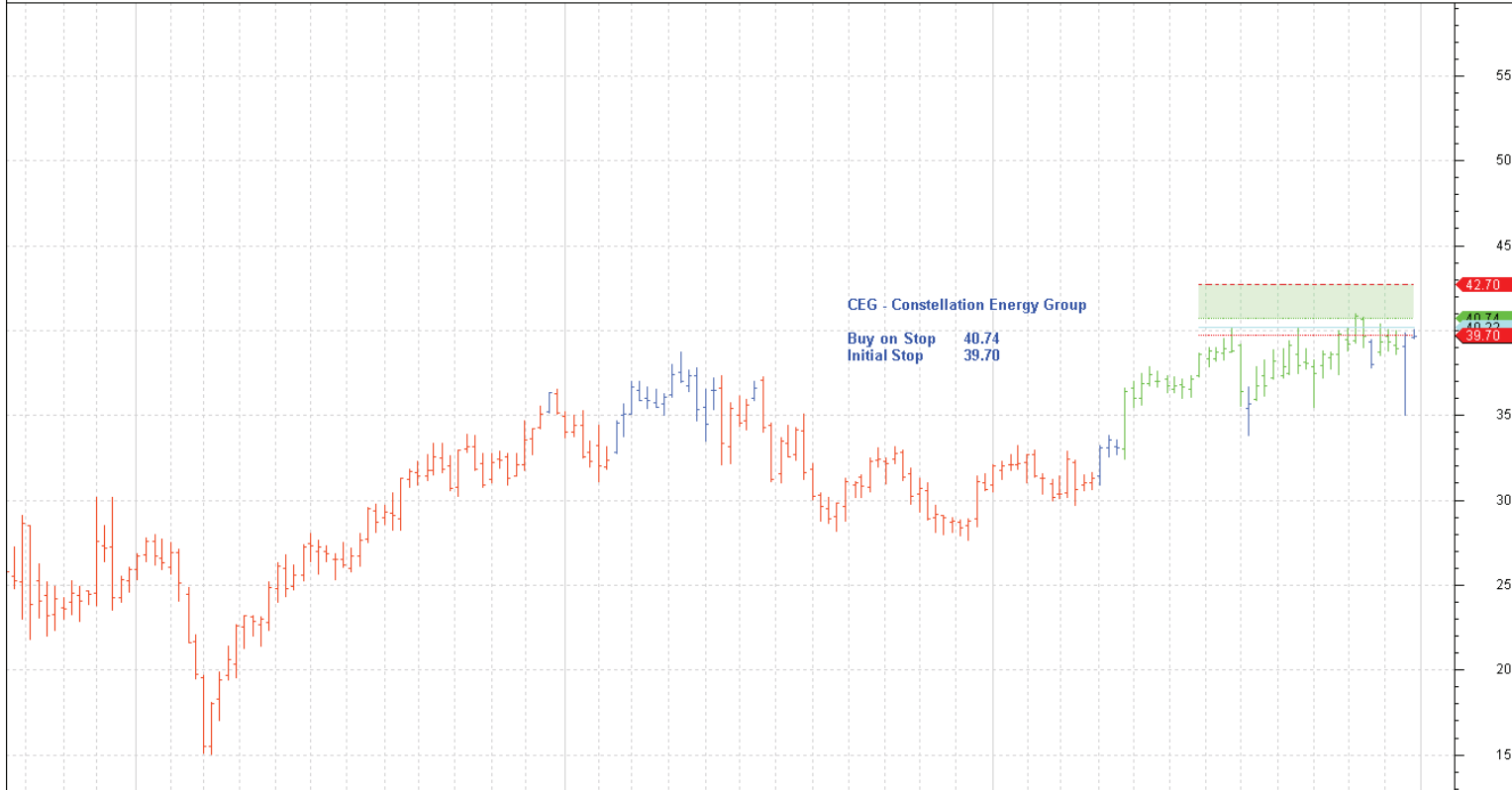
© BullSystems www.bullsystems.com

CBS Weekly CI=27.14000 O=26.78000 H=27.72000 L=26.63000 +0.25000 +0.93% CBS Weekly LW-DIPC(1.5, 5, 34) CBS Weekly LW-MCL(03-10-2011, 26.84, 5, C, C) Ma=30.07000 Mi=28.27800 R=26.84000 I= 30-12-2011



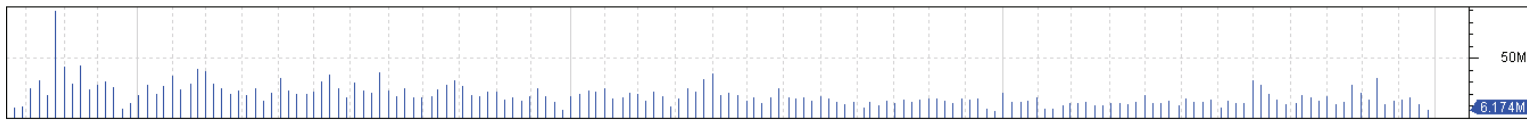
© BullSystems www.bullsystems.com

CEG Weekly CI=39.67000 O=39.60000 H=40.04000 L=39.55000 -0.04000 -0.10% CEG Weekly LW-DIPC(1.5, 5, 34) CEG Weekly LW-MCL(20-06-2011, 40.22, 5, C, C) Ma=42.70100 Mi=40.73600 R=40.22000 I=: 30-12-2011

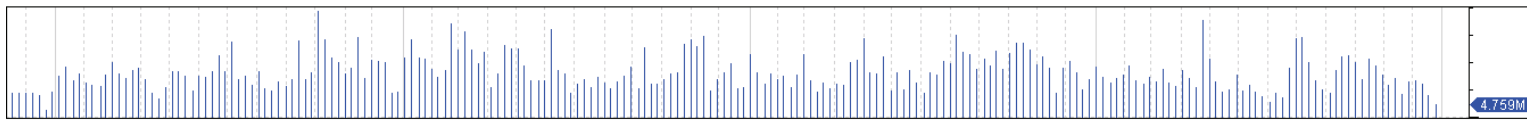
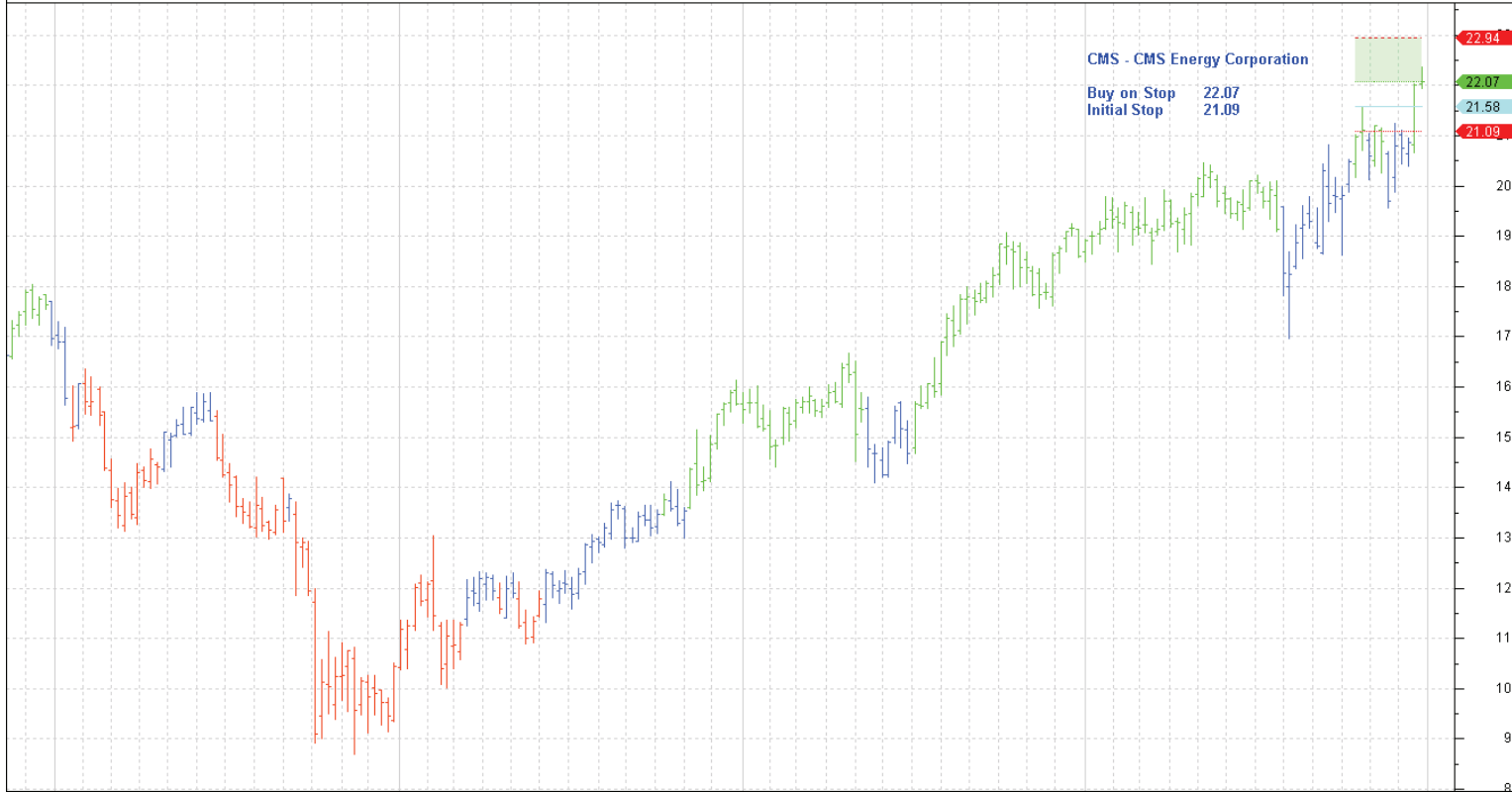


2008 2009 2010 2011 2012
 © BullSystems www.bullsystems.com

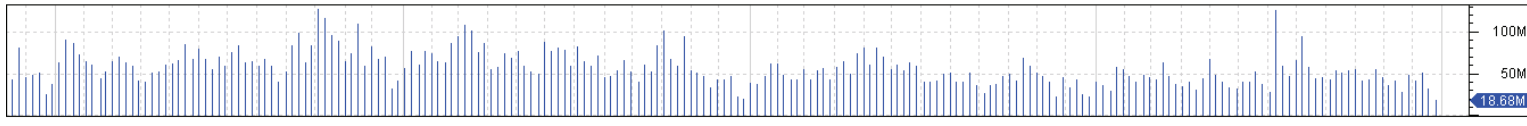
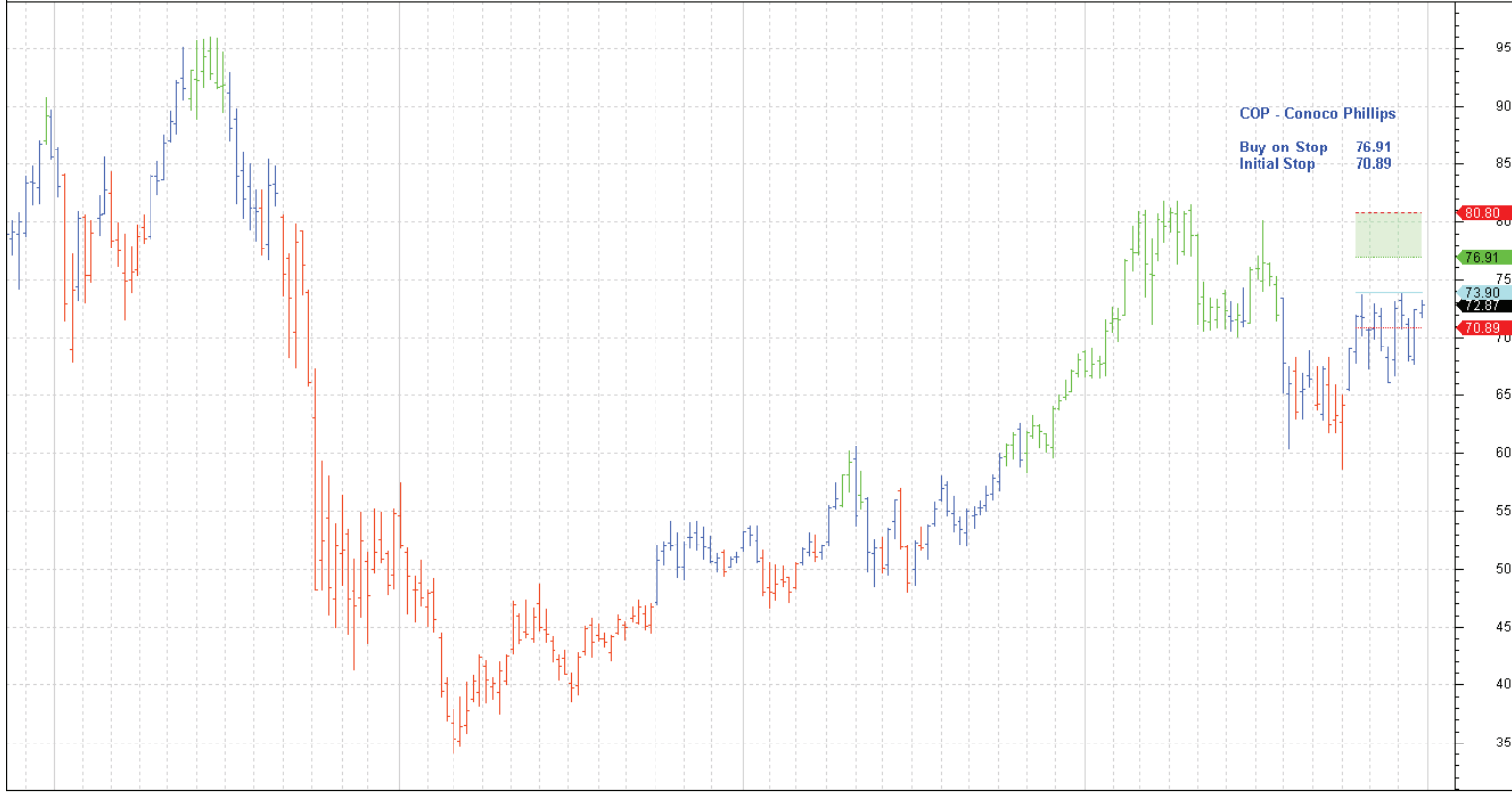
CI Weekly CI=42.00000 O=43.15000 H=43.64000 L=41.99000 -1.13000 -2.62% CI Weekly LW-DIPC(1.5, 5, 34) CI Weekly LW-MCS(18-07-2011, 40.24, 5, C, C) Ma=37.01500 Mi=39.29600 S=40.24000 I=41.1840 30-12-2011



2008 2009 2010 2011 2012
 © BullSystems www.bullsystems.com

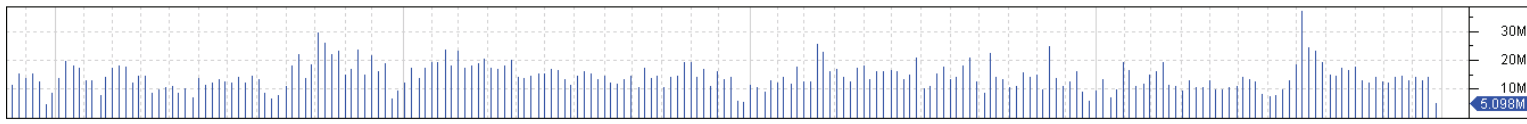
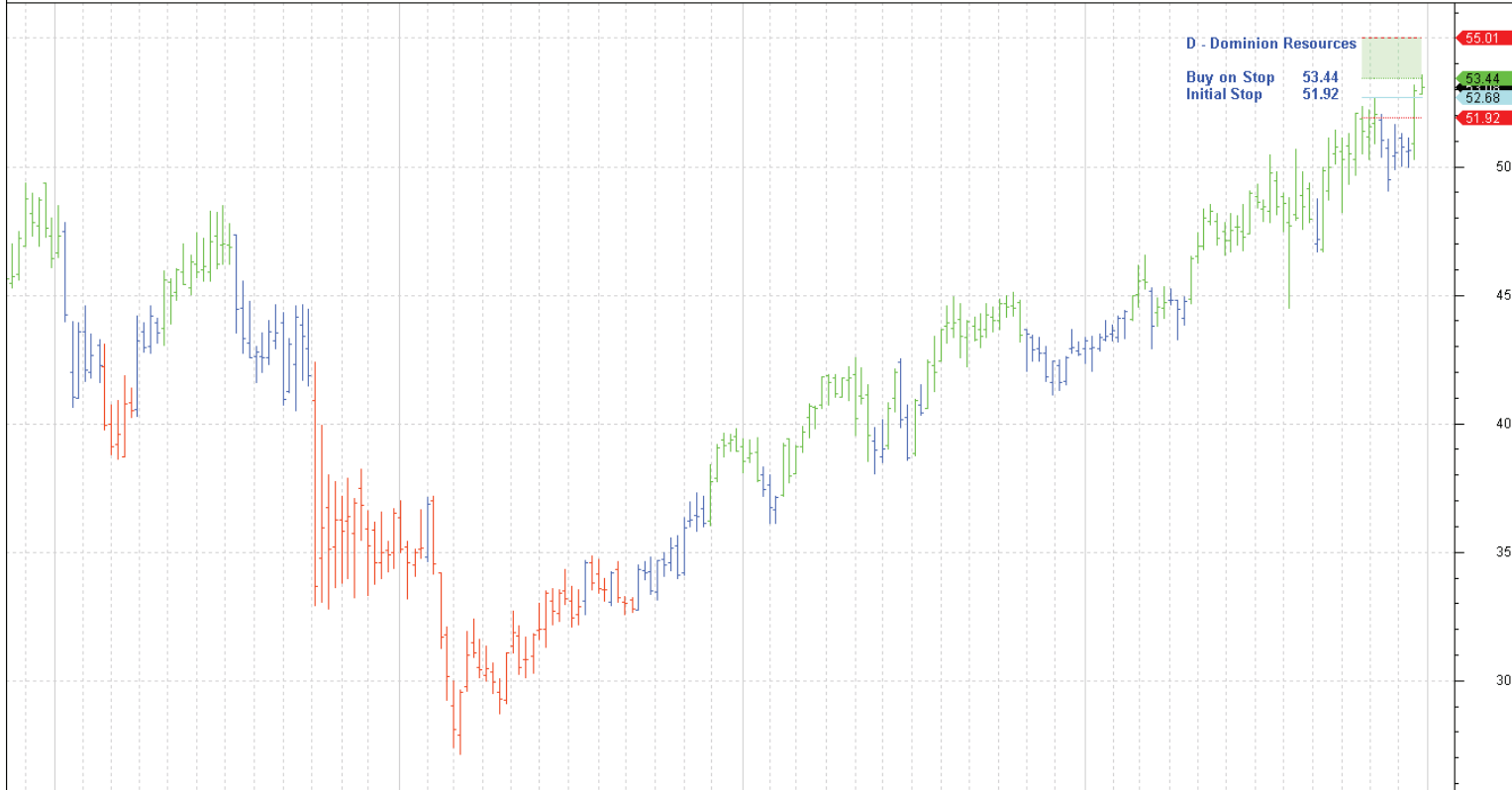


J D J F M A M J J A S O N D J F M A M J J A S O N D J F M A M J J A S O N D J F M A M J J A S O N D J
 2007 2008 2009 2010 2011



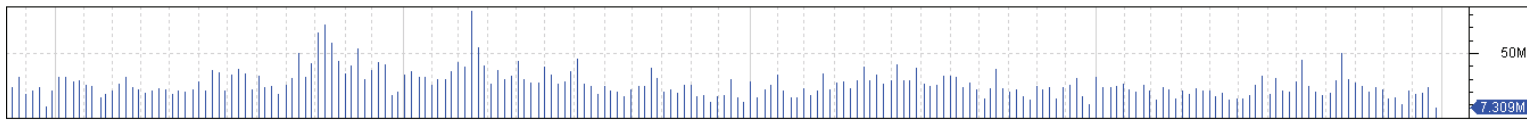
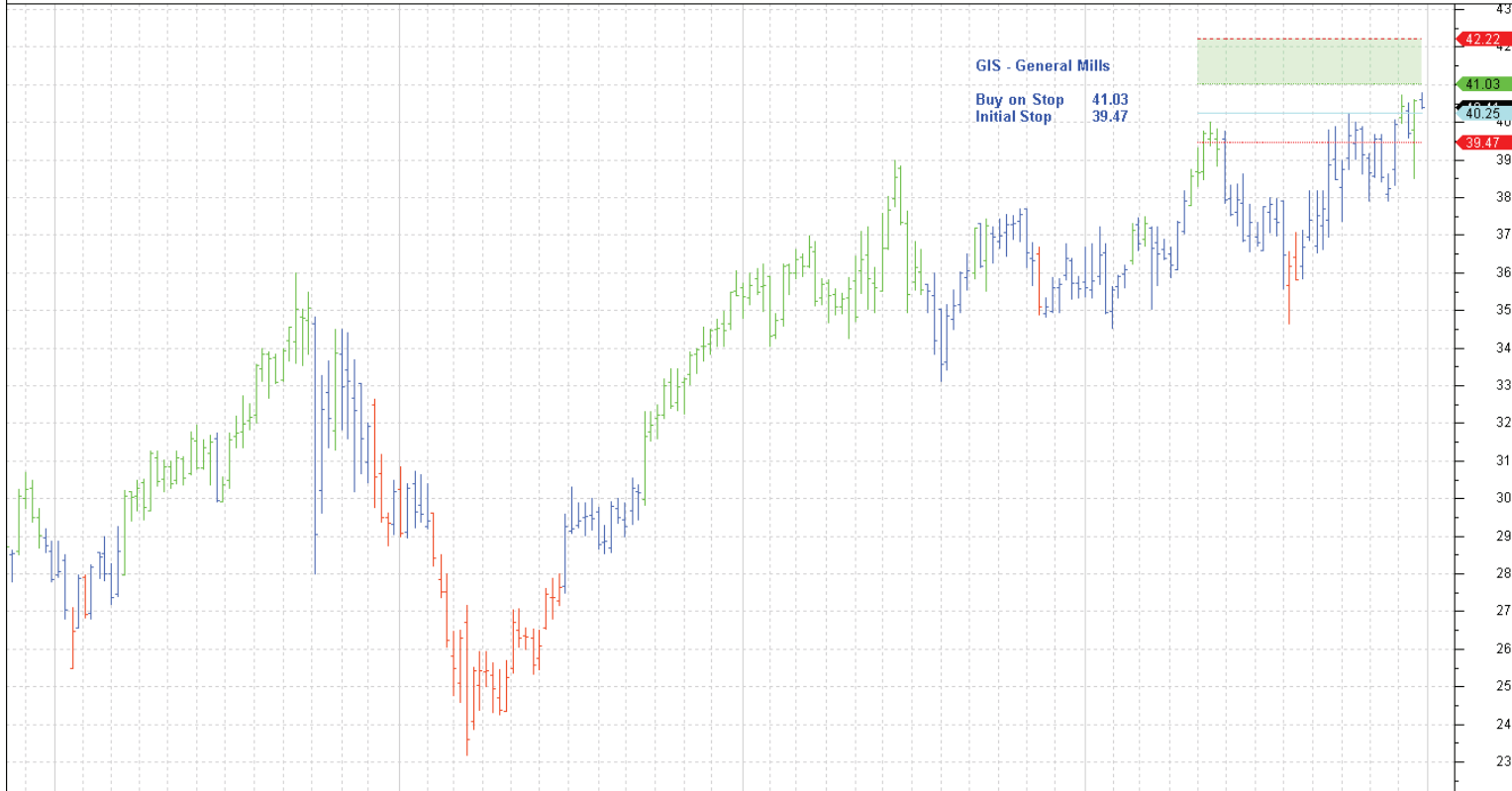
J D J F M A M J J A S O N D J F M A M J J A S O N D J F M A M J J A S O N D J F M A M J J A S O N D J
 2007 2008 2009 2010 2011

D Weekly CI=53.08000 O=52.85000 H=53.59000 L=52.85000 +0.13000 +0.25% D Weekly LW-DIPC(1.5,5,34) D Weekly LW-MCL(17-10-2011,52.68,5,C,C) Ma=55.00800 Mi=53.44200 R=52.68000 I=51.91800 30-12-2011



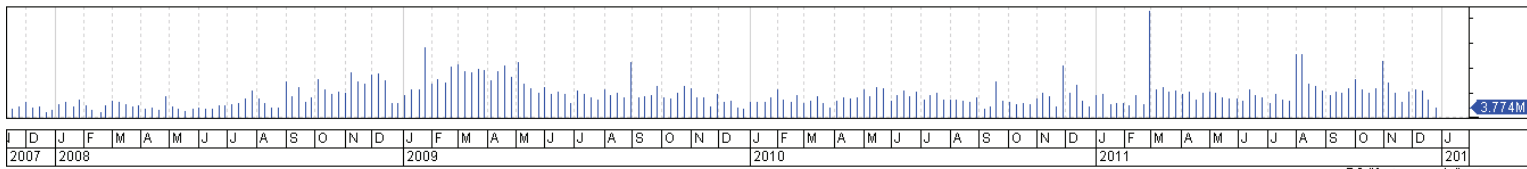
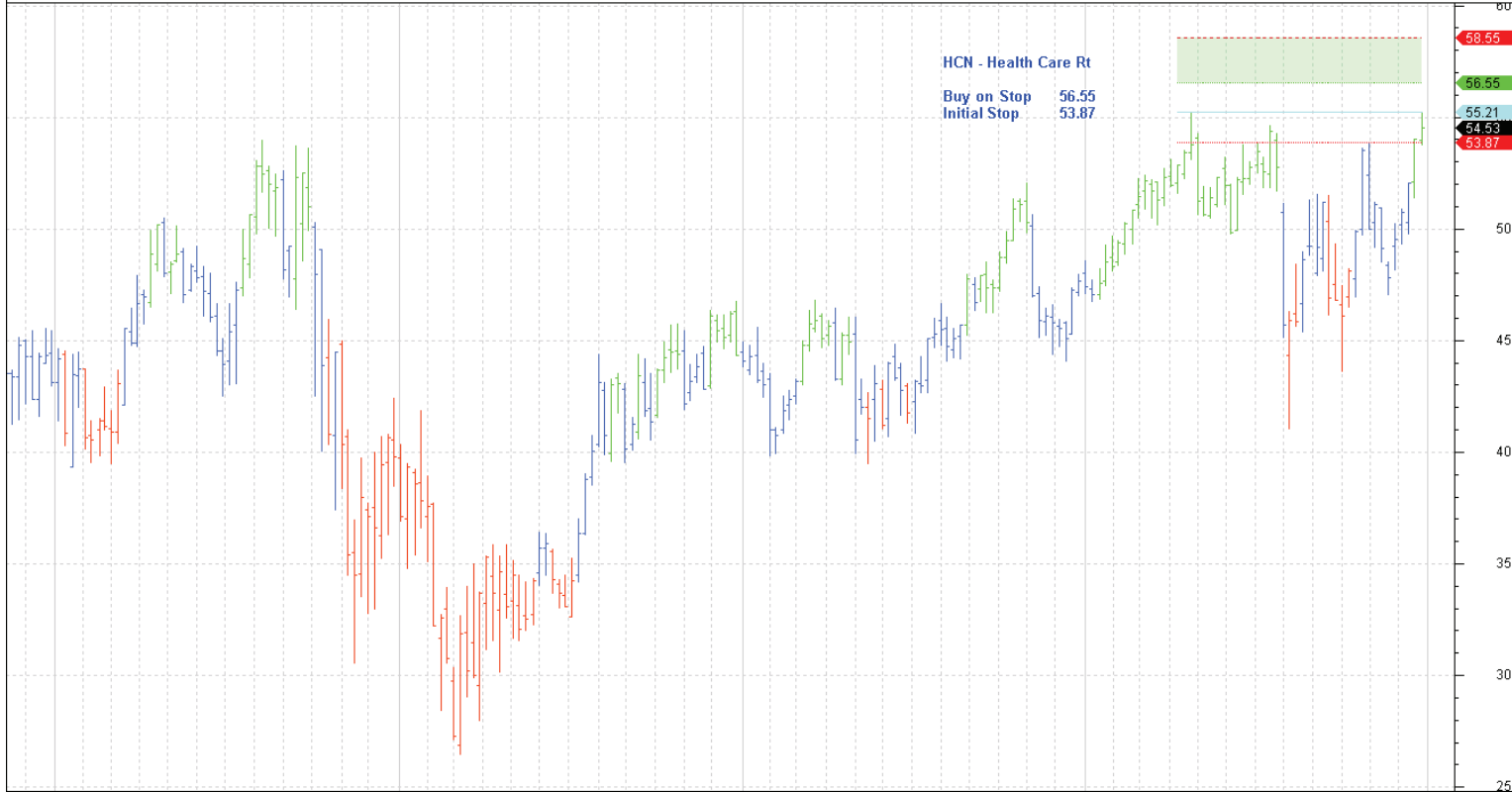
J D J F M A M J J A S O N D J F M A M J J A S O N D J F M A M J J A S O N D J F M A M J J A S O N D J 2007 2008 2009 2010 2011 201

GIS Weekly CI=40.41000 O=40.61000 H=40.80000 L=40.37000 -0.16000 -0.39% GIS Weekly LW-DIPC(1.5,5,34) GIS Weekly LW-MCL(25-04-2011,40.25,5,C,C) Ma=42.21600 Mi=41.03000 R=40.25000 I=39 30-12-2011



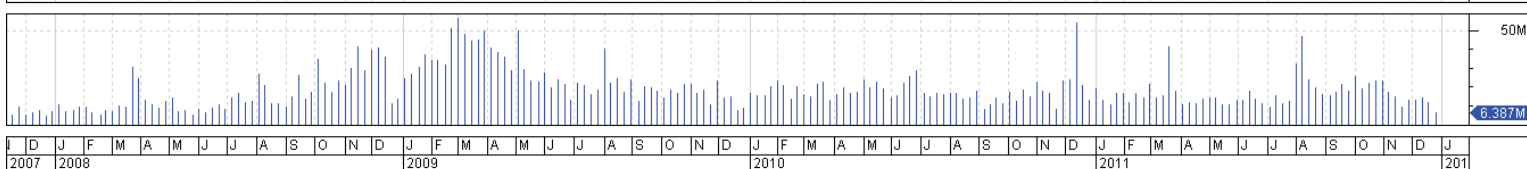
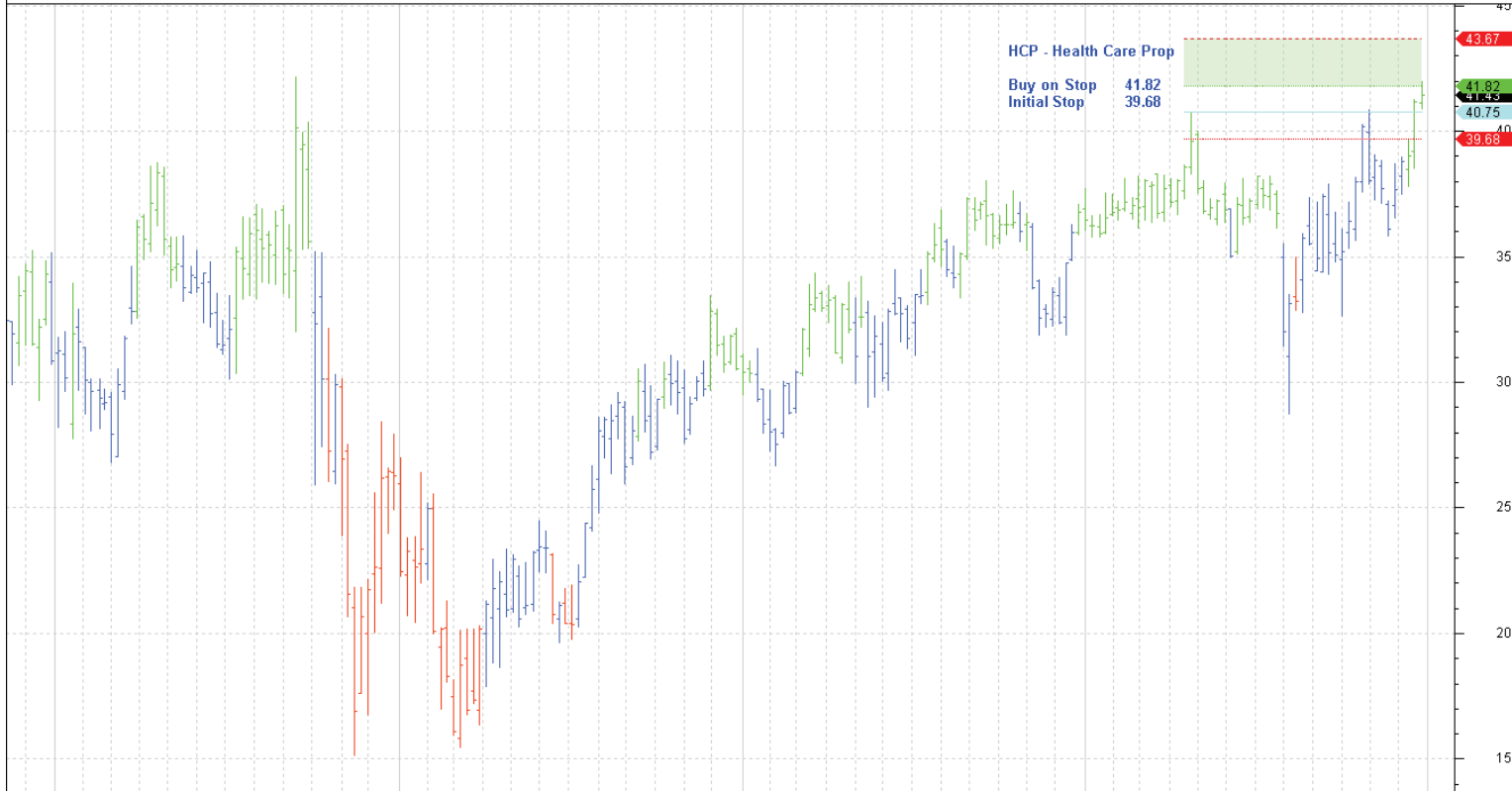
J D J F M A M J J A S O N D J F M A M J J A S O N D J F M A M J J A S O N D J 2007 2008 2009 2010 2011 201

HCN Weekly CI=54.53000 O=53.98000 H=55.17000 L=53.76000 +0.50000 +0.93% HCN Weekly LW-DIPC(1.5,5,34) HCN Weekly LW-MCL(04-04-2011,55.21,5,C,C) Ma=58.55000 Mi=56.55400 R=55.21000 I= 30-12-2011



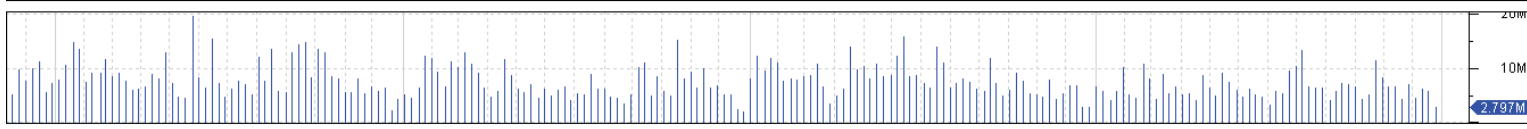
© BullSystems www.bullsystems.com

HCP Weekly CI=41.43000 O=41.14000 H=41.98000 L=40.89000 +0.25000 +0.61% HCP Weekly LW-DIPC(1.5,5,34) HCP Weekly LW-MCL(11-04-2011,40.75,5,C,C) Ma=43.67200 Mi=41.81800 R=40.75000 I= 30-12-2011



© BullSystems www.bullsystems.com

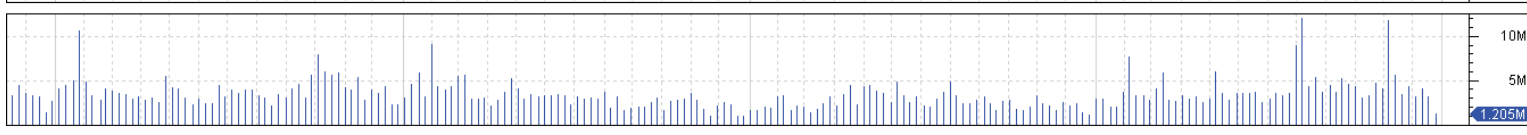
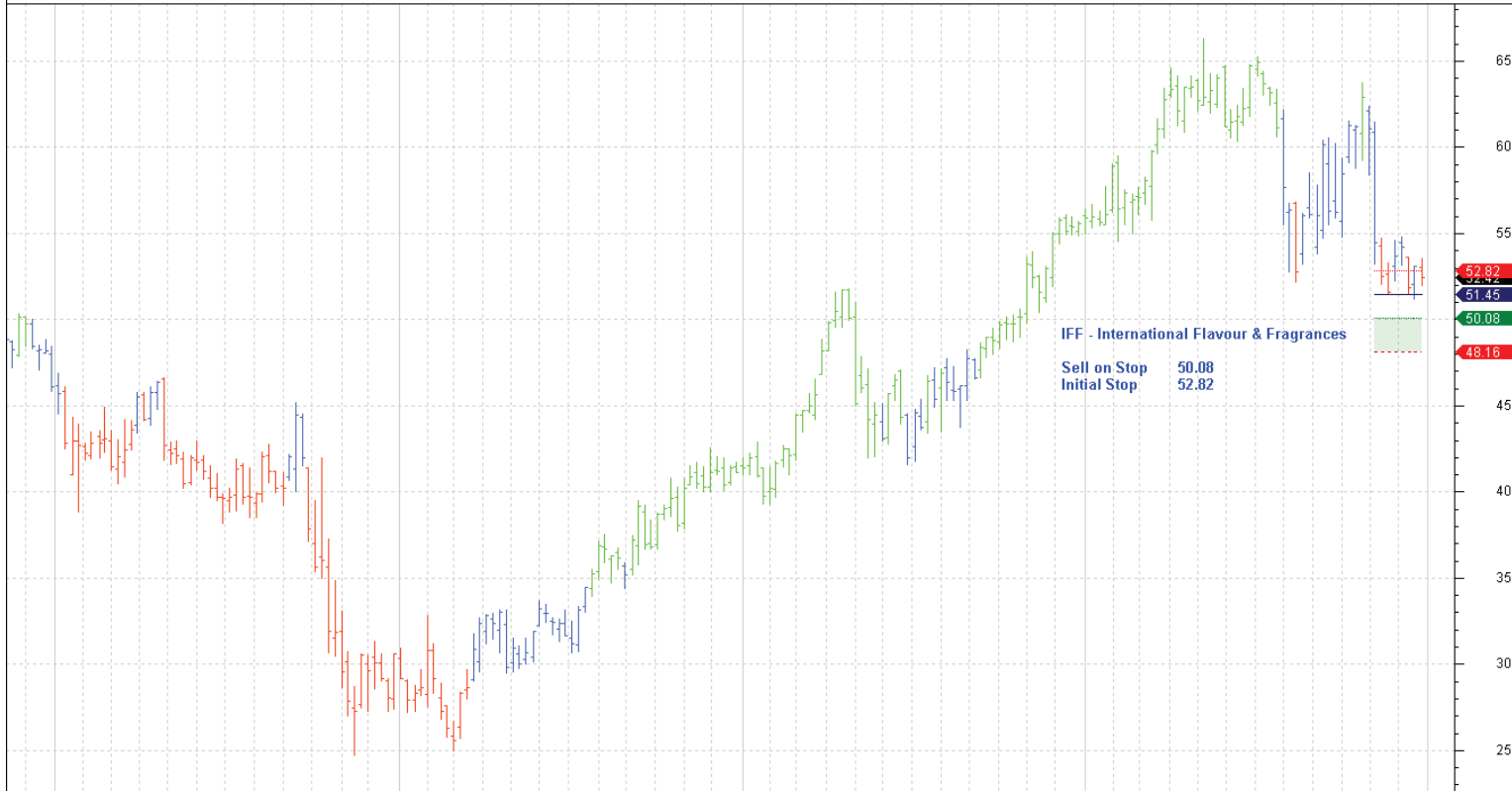
HSY Weekly CI=61.78000 O=61.03000 H=62.26000 L=61.03000 +0.78000 +1.28% HSY Weekly LW-DIPC(1.5,5,34) HSY Weekly LW-MCL(05-09-2011,60.96,5,C,C) Ma=64.04300 Mi=62.24400 B=60.96000 I= 30-12-2011



J D J F M A M J J A S O N D J F M A M J J A S O N D J F M A M J J A S O N D J F M A M J J A S O N D J
 2007 2008 2009 2010 2011 201

© BullSystems www.bullsystems.com

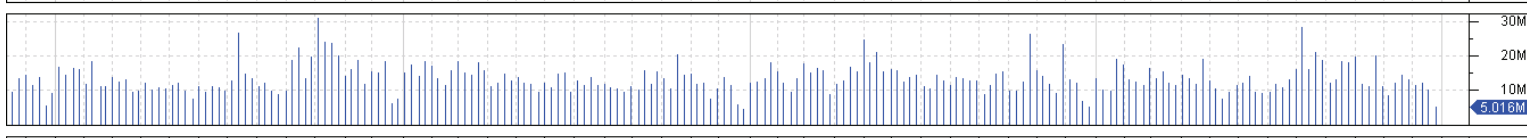
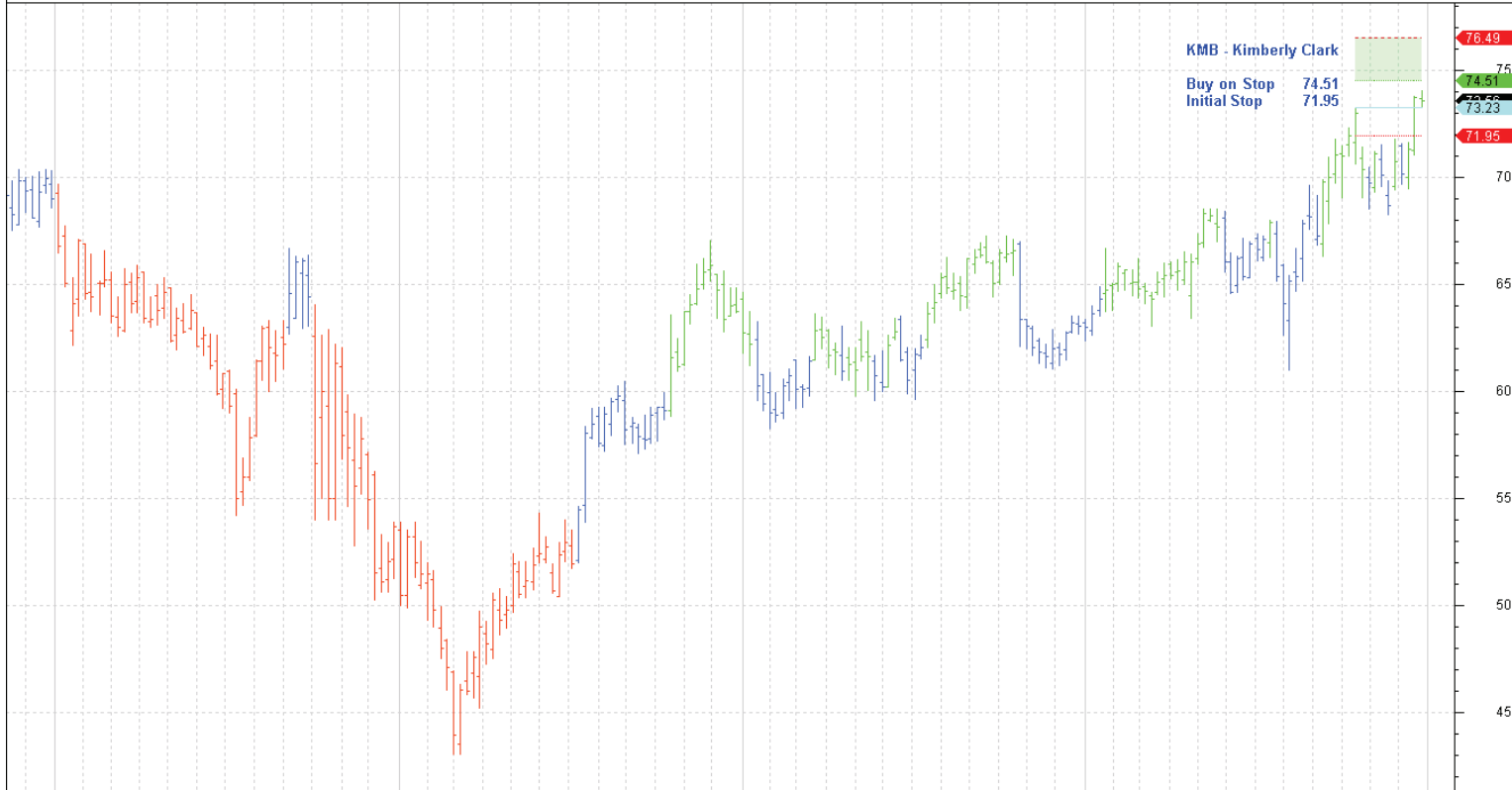
IFF Weekly CI=52.42000 O=53.06000 H=53.56000 L=52.01000 -0.71000 -1.34% IFF Weekly LW-DIPC(1.5,5,34) IFF Weekly LW-MCS(31-10-2011,51.45,5,C,C) Ma=48.16200 Mi=50.08200 S=51.45000 I=52.8 30-12-2011



J D J F M A M J J A S O N D J F M A M J J A S O N D J F M A M J J A S O N D J F M A M J J A S O N D J
 2007 2008 2009 2010 2011 201

© BullSystems www.bullsystems.com

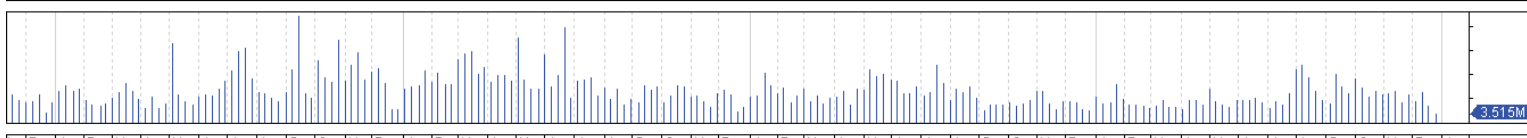
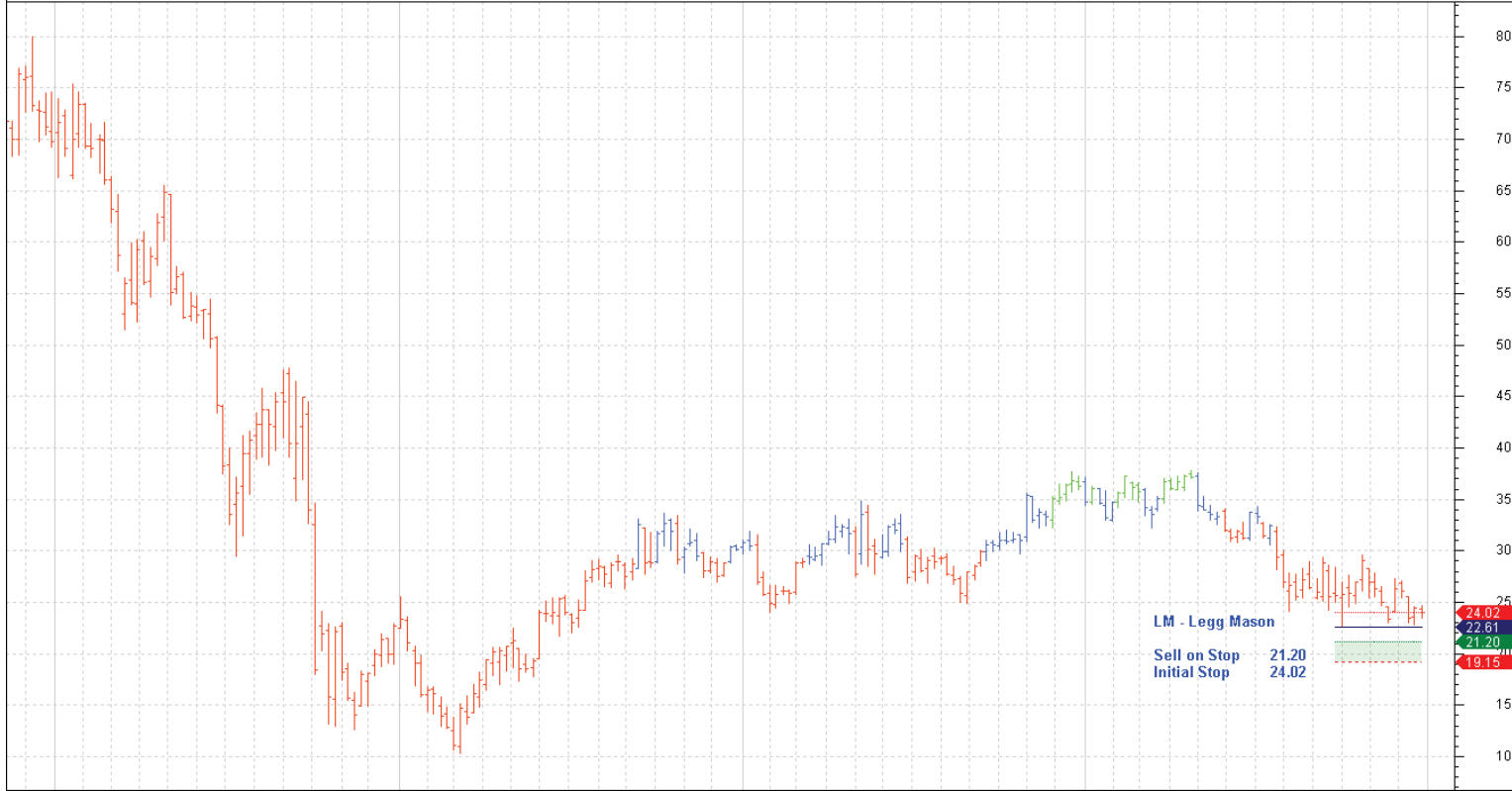
KMB Weekly CI=73.56000 O=73.69000 H=74.06000 L=73.30000 -0.17000 -0.23% KMB Weekly LW-DIPC(1.5,5,34) KMB Weekly LW-MCL(10-10-2011,73.23,5,C,C) Ma=76.49400 Mi=74.50800 R=73.23000 I= 30-12-2011



J D J F M A M J J A S O N D J F M A M J J A S O N D J F M A M J J A S O N D J F M A M J J A S O N D J
 2007 2008 2009 2010 2011

© BullSystems www.bullsystems.com

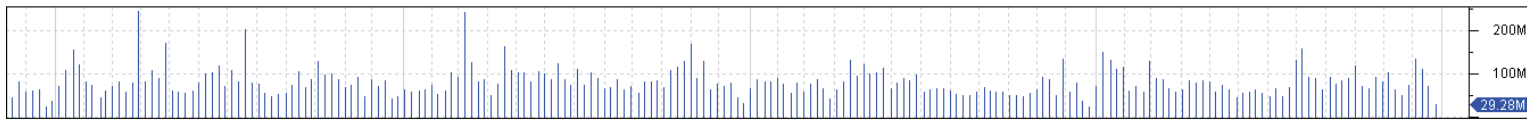
LM Weekly CI=24.05000 O=24.31000 H=24.64000 L=23.52000 -0.40000 -1.64% LM Weekly LW-DIPC(1.5,5,34) LM Weekly LW-MCS(19-09-2011,22.61,5,C,C) Ma=19.14600 Mi=21.19800 S=22.61000 I=24.07 30-12-2011



J D J F M A M J J A S O N D J F M A M J J A S O N D J F M A M J J A S O N D J
 2007 2008 2009 2010 2011

© BullSystems www.bullsystems.com

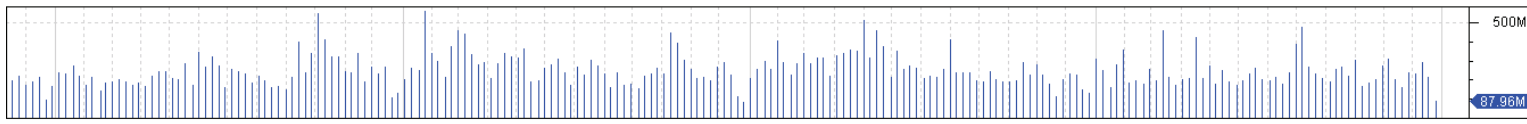
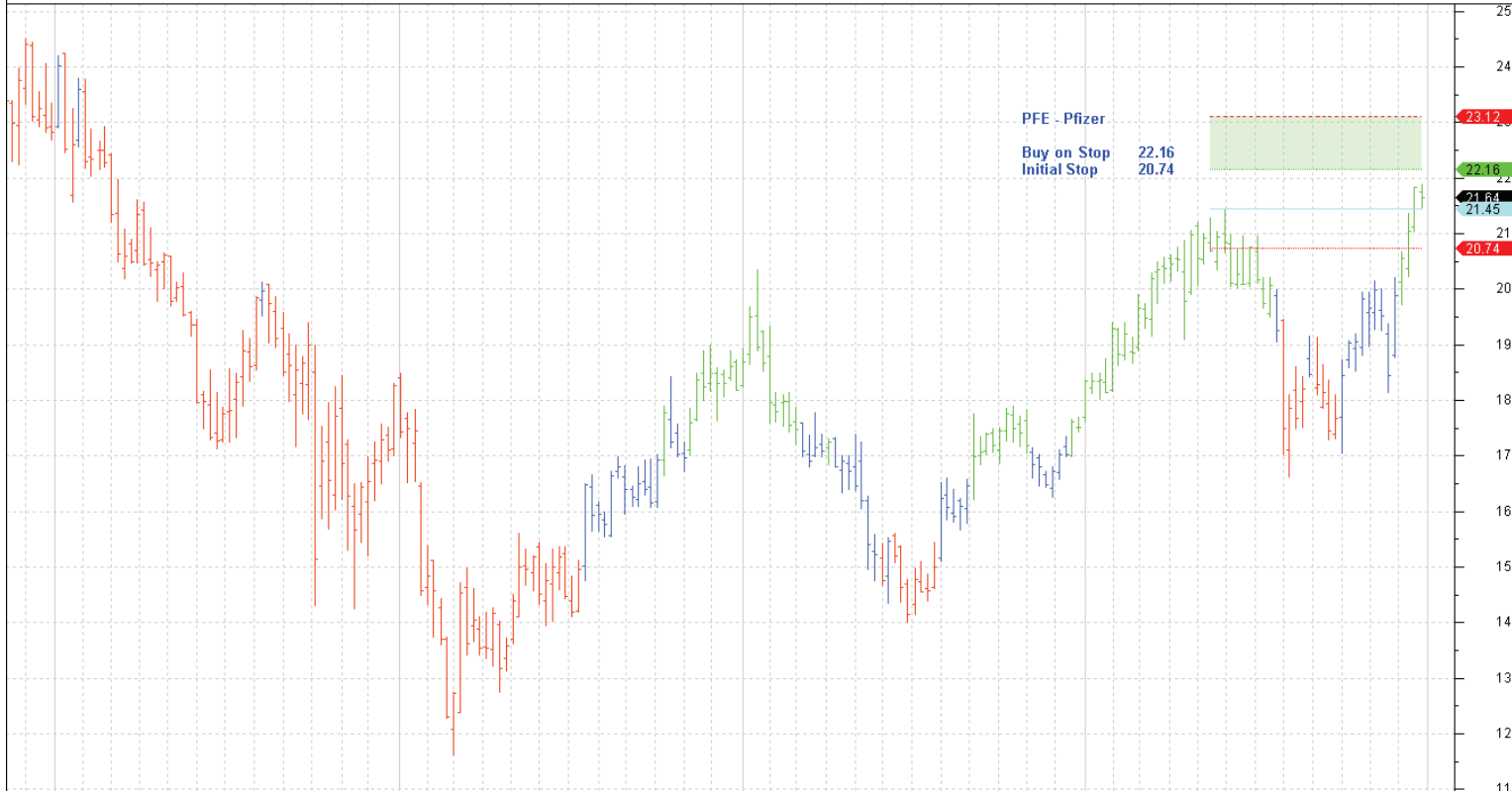
MRK Weekly Cl=37.70000 O=37.78000 H=37.90000 L=37.40000 -0.20000 -0.53% MRK Weekly LW-DIPC(1.5, 5, 34) MRK Weekly LW-MCL(16-08-2010, 37.65, 5, C, C) Ma=40.03400 Mi=38.63800 R=37.65000 I= 30-12-2011



J D J F M A M J J A S O N D J F M A M J J A S O N D J F M A M J J A S O N D J 2007 2008 2009 2010 2011 201

© BullSystems www.bullsystems.com

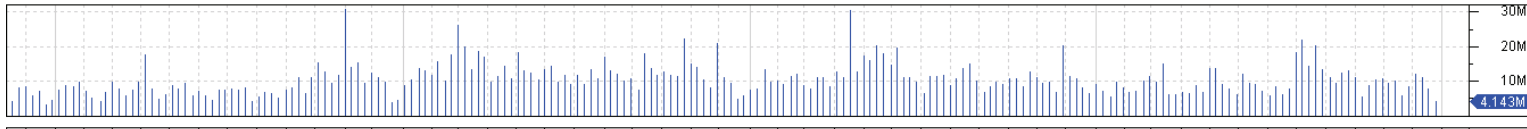
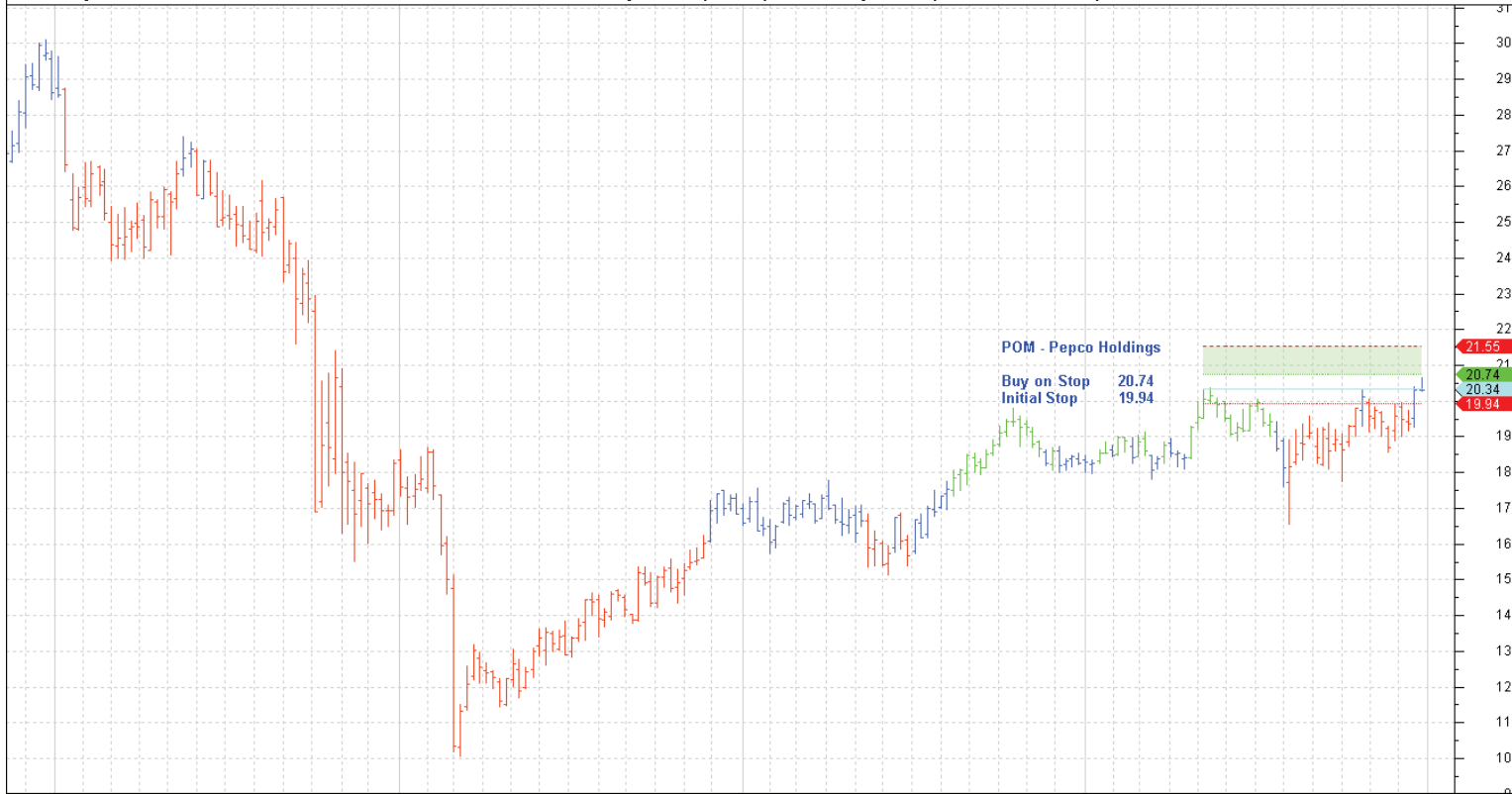
PFE Weekly Cl=21.64000 O=21.75000 H=21.90000 L=21.45000 -0.19000 -0.87% PFE Weekly LW-DIPC(1.5, 5, 34) PFE Weekly LW-MCL(09-05-2011, 21.45, 5, C, C) Ma=23.11600 Mi=22.16400 R=21.45000 I=21 30-12-2011



J D J F M A M J J A S O N D J F M A M J J A S O N D J F M A M J J A S O N D J 2007 2008 2009 2010 2011 201

© BullSystems www.bullsystems.com

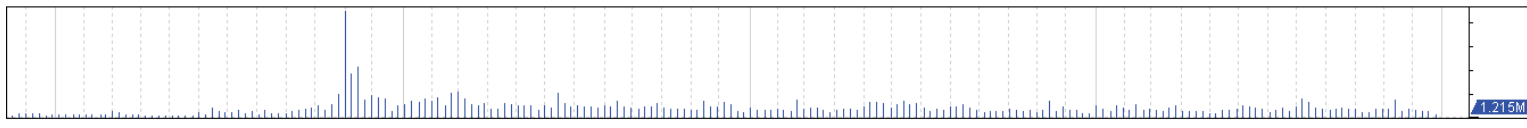
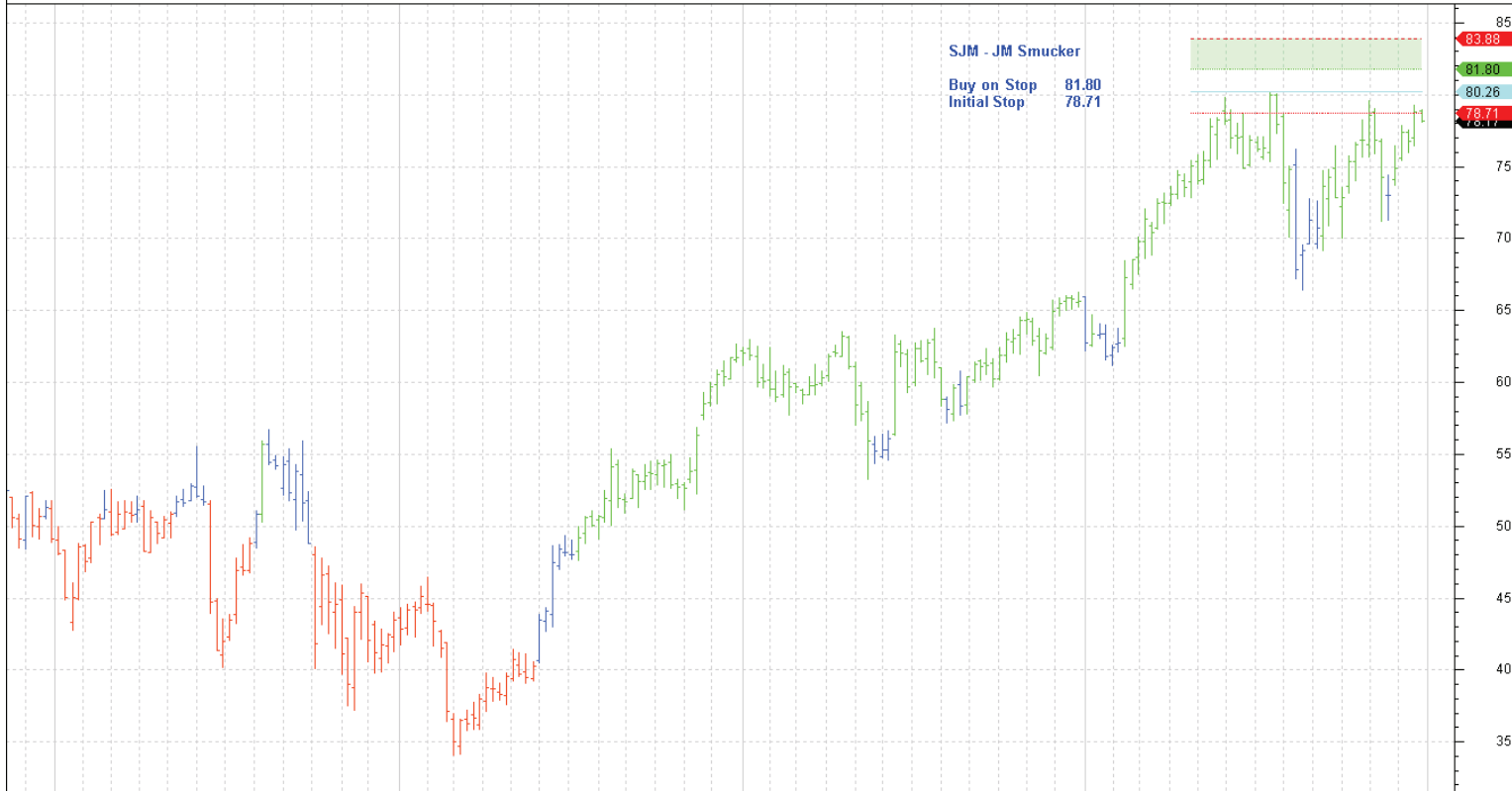
POM Weekly CI=20.30000 O=20.32000 H=20.64000 L=20.27000 0.00000 0.00% POM Weekly LW-DIPC(1.5, 5, 34) POM Weekly LW-MCL(02-05-2011, 20.34, 5, C, C) Ma=21.54900 Mi=20.74200 R=20.34000 I=1 30-12-2011



2007 2008 2009 2010 2011 201

© BullSystems www.bullsystems.com

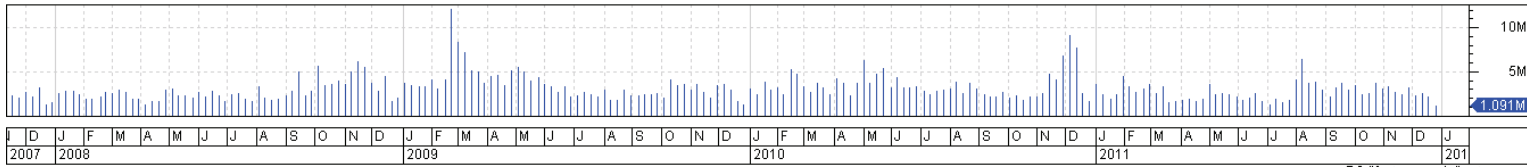
SJM Weekly CI=78.17000 O=78.86000 H=78.98000 L=78.11000 -0.63000 -0.80% SJM Weekly LW-DIPC(1.5, 5, 34) SJM Weekly LW-MCL(18-04-2011, 80.2552, 5, C, C) Ma=83.87920 Mi=81.79920 R=80.25520 I=1 30-12-2011



2007 2008 2009 2010 2011 201

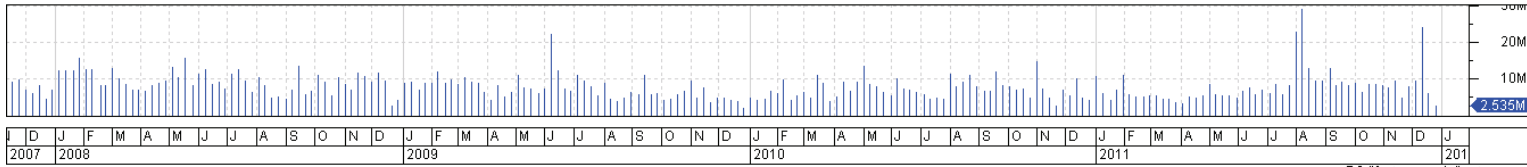
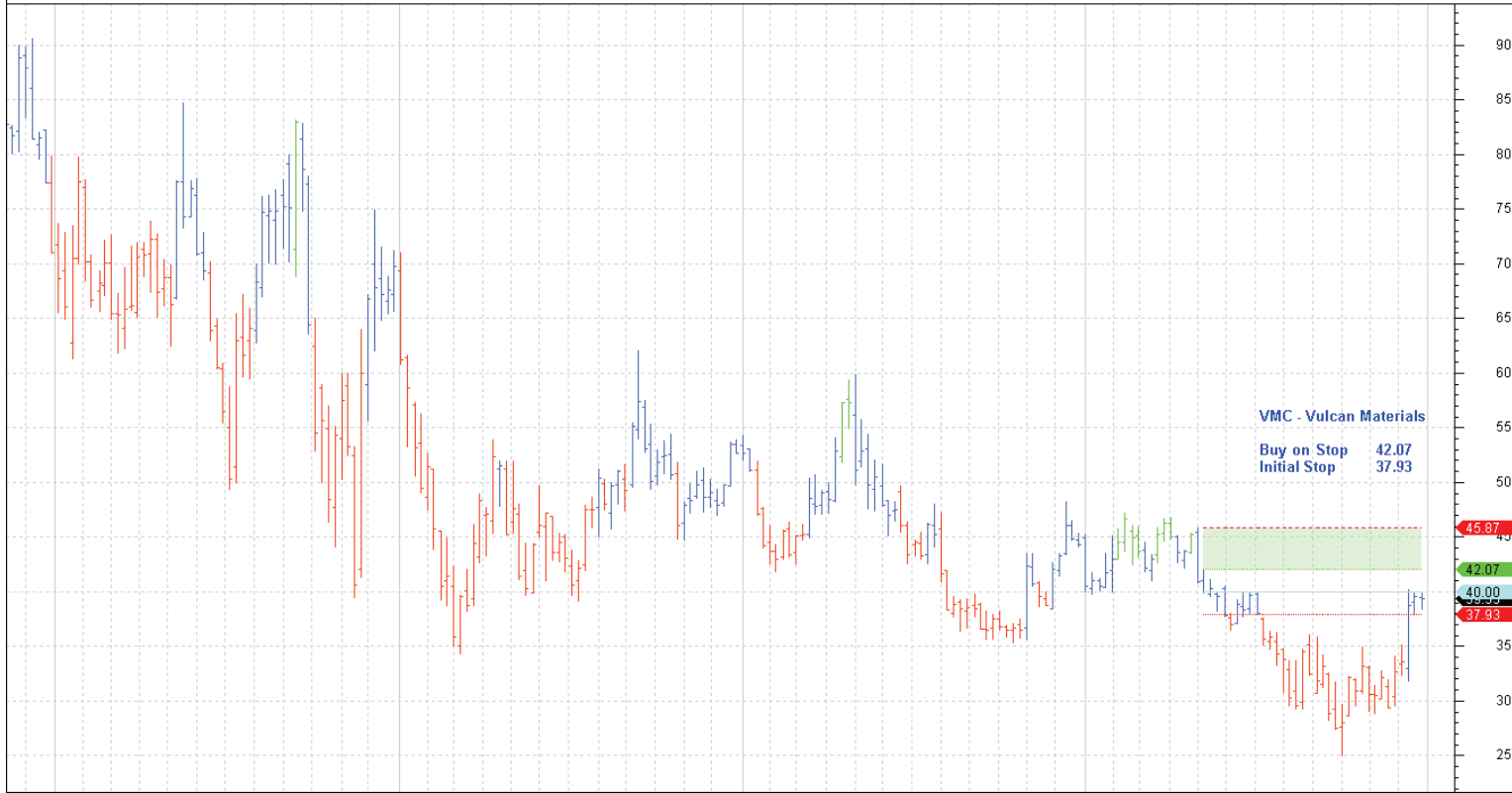
© BullSystems www.bullsystems.com

TEG Weekly CI=54.18000 O=53.82000 H=54.61000 L=53.73000 +0.35000 +0.65% TEG Weekly LW-DIPC(1.5,5,34) TEG Weekly LW-MCL(20-09-2010,54.04,5,C,C) Ma=57.10800 Mi=55.05800 R=54.04000 I= 30-12-2011

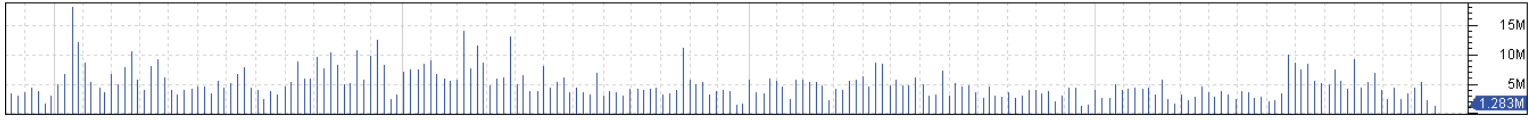
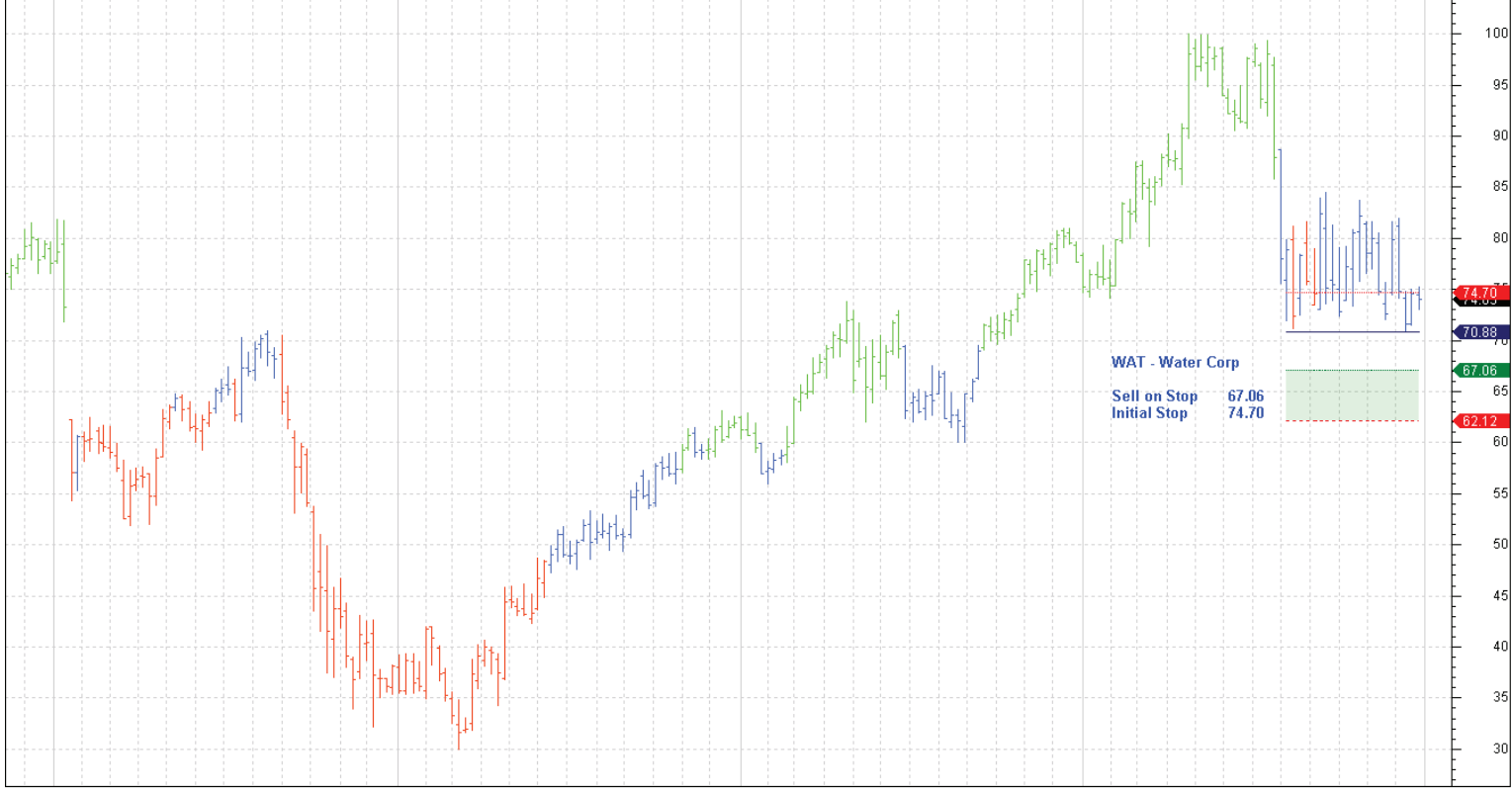


© BullSystems www.bullsystems.com

VMC Weekly CI=39.35000 O=39.50000 H=39.84500 L=38.43000 -0.22000 -0.56% VMC Weekly LW-DIPC(1.5,5,34) VMC Weekly LW-MCL(02-05-2011,40,5,C,C) Ma=45.87442 Mi=42.07400 R=40.00000 I=37 30-12-2011



© BullSystems www.bullsystems.com



Year	Jan	Feb	Mar	Apr	May	Jun	Jul	Aug	Sep	Oct	Nov	Dec
2007												
2008												
2009												
2010												
2011												
2012												