

# DAILY FOREX

## Tuesday 2nd February 2016

**Currencies – AUD, CAD, CHF, EUR, GBP, JPY, NZD, SGD, USD,**

---

There were 3 entries, 1TP1 exits, 1TP2 exits, TP3 exits and 3 Stop exits and 0 close at markets in Forex Daily.

There are new orders in Forex Daily.

---

**Entries:** NZDCAD Sell Stop 0.9042, USDCAD Sell Stop 1.39422, XAUUSD Buy Stop 1119

**Exits:** EURCAD Buy Limit 1.5120, NZDCAD Sell Stop 0.9042, USDCAD Buy Limit ,

**Take Profit Reached:** USDCAD Sell Stop 1.39422 reached TP1 & TP2

The colour coding we are currently using is as follows:

Amended orders or stops

Retained Orders or stops – no change

New working orders

Immediate action required

Short Sell

Change Contract Specifications

## **OPEN POSITIONS:**

<b>PAIR:</b>	<b>OLD</b>	<b>ACTION</b>	<b>NEW</b>	<b>TP 1</b>	<b>TP 2</b>	<b>TP 3</b>
--------------	------------	---------------	------------	-------------	-------------	-------------

## **Close Positions**

### **Amended**

#### Stop Positions

AUDSGD	Buy Stop	0.9954	Amend	0.9964	1.0277	
EURGBP	Sell Stop	0.7703	Amend	0.7665	0.7437	
EURJPY	Buy Stop	129.688	Amend	130.2994	132.82	
GBPCHF	Buy Stop	1.4354	Amend	1.4478	1.4837	
XAUUSD	Buy Stop	1109	Amend	1117	1148	

#### Limit Positions

### **Retained**

#### Stop Positions

EURCAD	Sell Stop	1.5653	Amend	1.5498	1.5080	
USDCAD	Sell Stop	1.39422	1.40028			1.38879

### Limit Positions

## WORKING ORDERS:

### CANCELLED ORDERS:

With multiple take profit orders - Close half the position at the "Take Profit 1" and then move the stop to the entry value, close the balance of the position at the "Take Profit 2"

Name	Direction	Entry	Stop Loss	TP 1	TP 2	TP3	Trade Risk
------	-----------	-------	-----------	------	------	-----	------------

## Amended

### Stop Orders

AUDUSD	Sell Stop	0.6994	0.7147	0.6892	0.6789		153 pips
EURGBP	Buy Stop	0.7650	0.7532	0.7747	0.7844		118 pips
EURUSD	Buy Stop	1.0988	1.0798	1.1089	1.1198		190 pips

### Limit Orders

## Retained

### Stop Orders

### Limit Orders

EURUSD	Sell Limit	1.1010	1.1110	1.0610			100 pips
GBPCHF	Buy Limit	1.4060	1.3960	1.4760			100 pips
GBPCHF	Sell Limit	1.4800	1.4880	1.4100			80 pips

## NEW ORDERS:

With multiple take profit orders - Place an on Stop Order for half the position with the entry & Stop Loss and Take Profit at the "Take Profit 1". Place a 2nd order for half the position as before but Take Profit at the "Take Profit 2" target. Once the 1st target has been reached move the stop to the entry value.

Name	Order Type	Entry	S.L.	TP 1	TP 2	TP 3	Trade Risk
------	------------	-------	------	------	------	------	------------

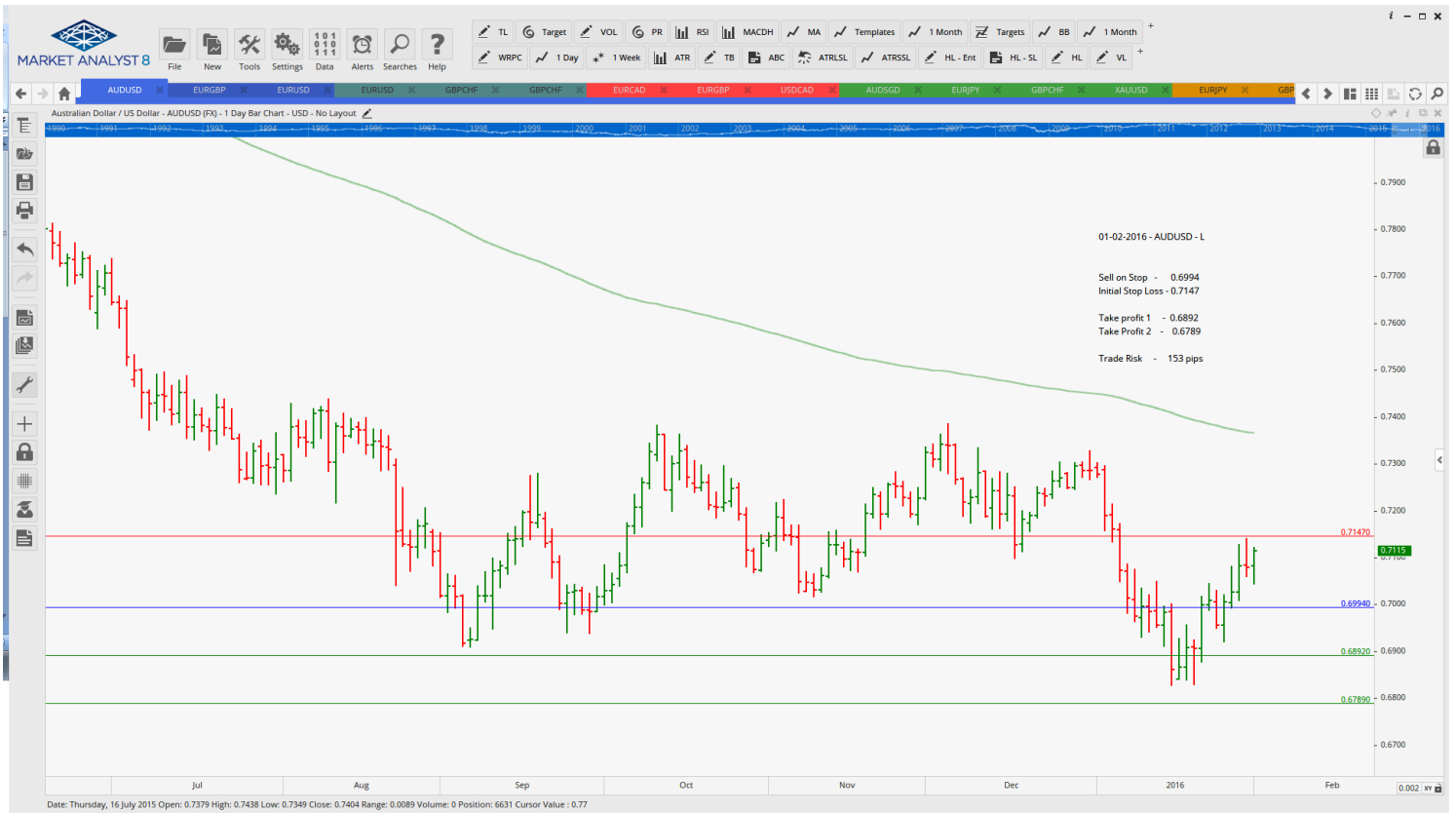
### Stop Orders

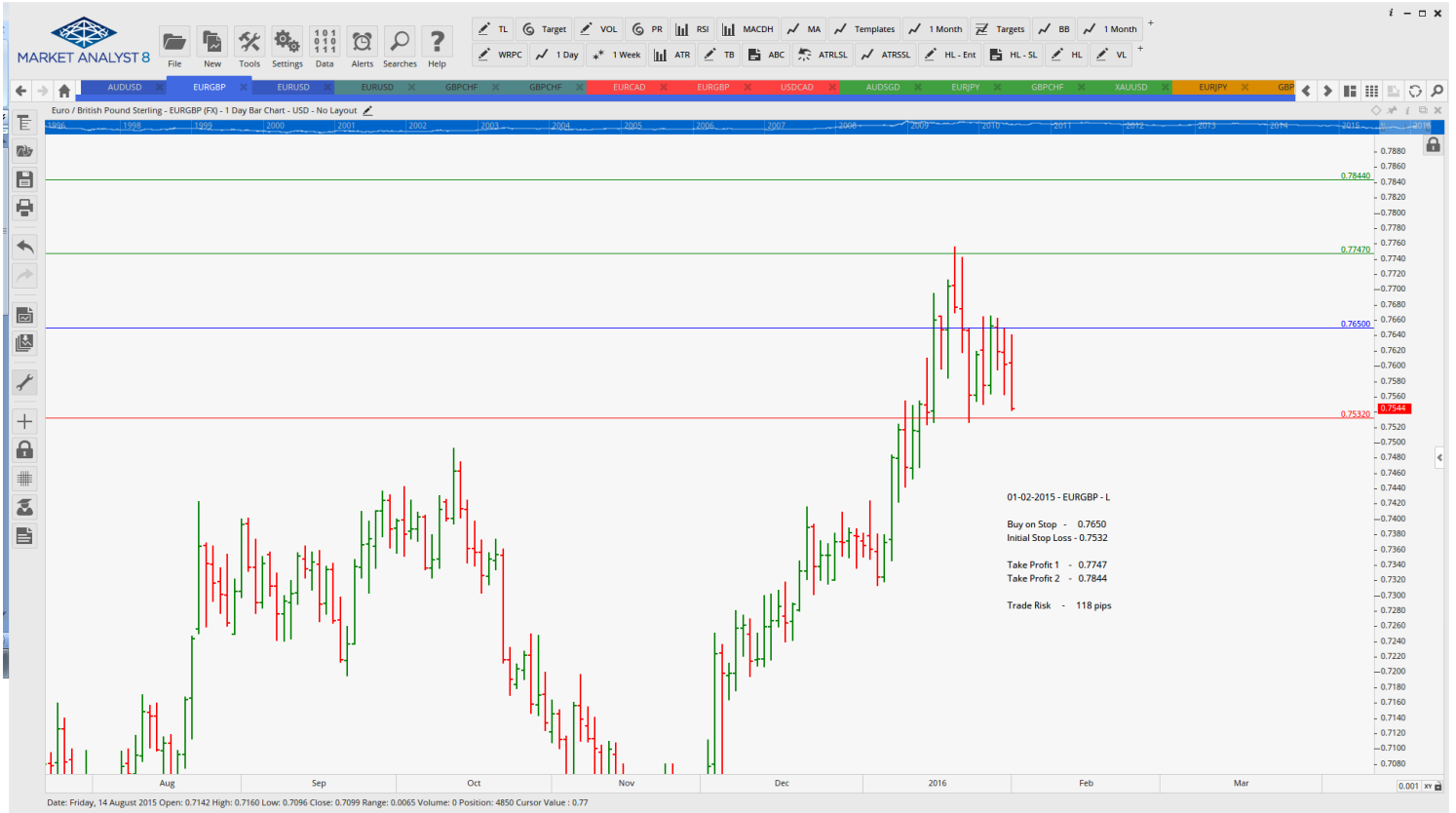
NZDUSD	Buy Stop	0.6561	0.6518	0.6787			33 pips
AUDJPY	Buy Stop	86.25	85.65	88.18			60 pips

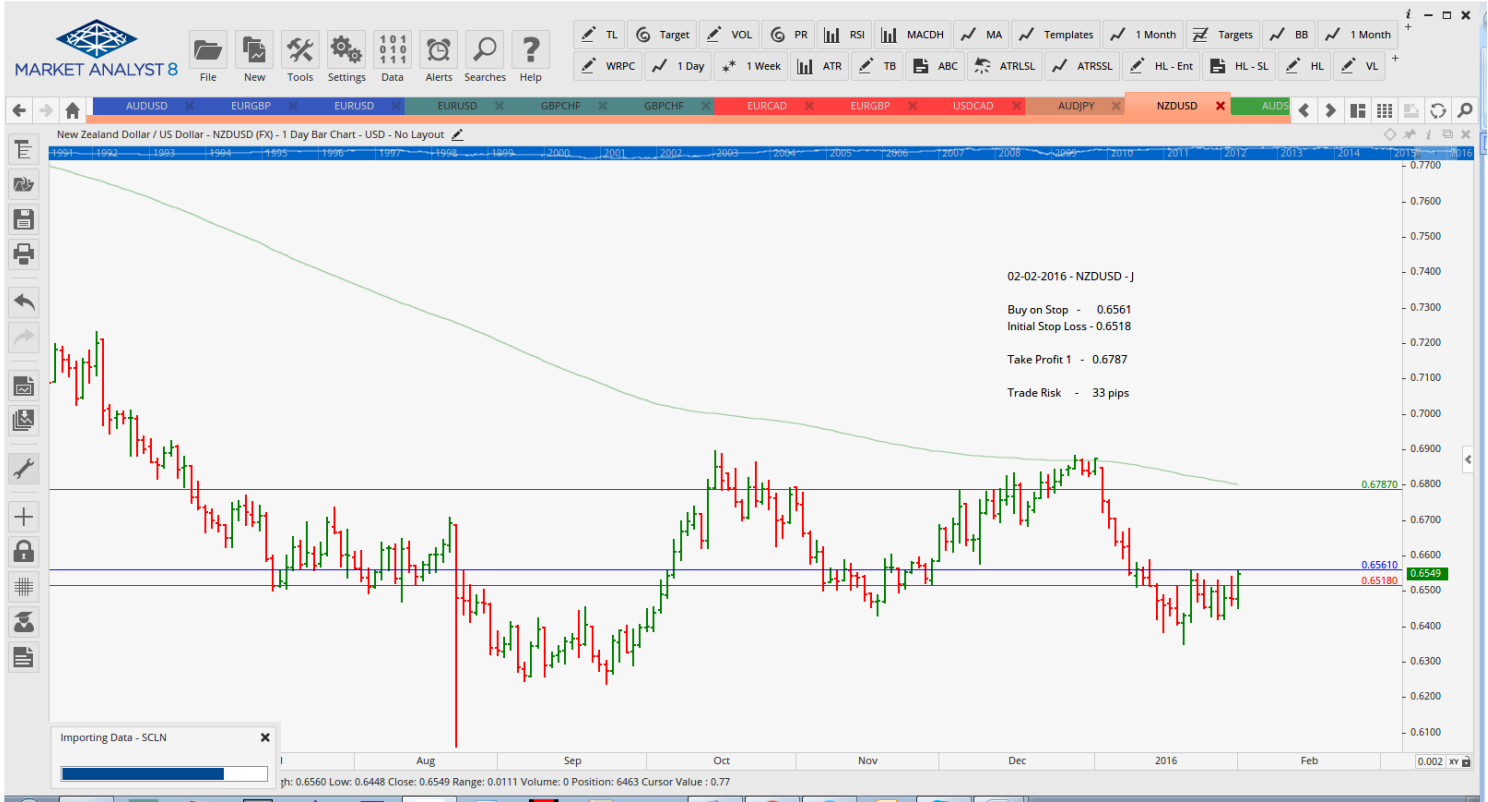
### Limit Orders

# CHARTS:

## Stop Orders







## Limit Orders

