

# DAILY FOREX

## Tuesday 30th June 2015

**Currencies – AUD, CAD, CHF, EUR, GBP, JPY, NZD, SGD, USD,**

---

There were 2 entries, 0 TP1 exits, 0 TP2 exits and 0 Stop exits yesterday in Forex Daily.

There is 1 new orders in Forex Daily.

---

**Entries:** EURCAD, EURJPY

**Exits:**

**Take Profit Reached:**

The colour coding we are currently using is as follows:

Amended orders or stops

Retained Orders or stops – no change

New working orders

Immediate action required

Short Sell

Change Contract Specifications

---

## OPEN POSITIONS:

PAIR:	OLD	ACTION	NEW	Take Profit 1	Take Profit 2
-------	-----	--------	-----	---------------	---------------

**Close Positions**

**Amended**

Stop Orders

Limit Orders

**Retained**

Stop Orders

AUDCHF	0.7079	Retain	0.7079	0.7312	0.7484
EURNZD	1.6590	Retain	1.6590	1.5922	1.5647
GBPNZD	2.3129	Retain	2.3129	2.2410	2.1718

USDCAD	1.2211	Retain	1.2211		1.2475
USDCHF	0.9200	Retain	0.9200	0.9460	0.9570

### Limit Orders

AUDNZD	1.1360	Retain	1.1360		1.1050
EURCAD	1.3620	Retain	1.3620		1.4000
EURJPY	135.70	Retain	135.70		142.00

## WORKING ORDERS:

### CANCELLED ORDERS:

#### AUDUSD

Name	Direction	Entry	Stop Loss	Take Profit 1	Take Profit 2	Trade Risk
------	-----------	-------	-----------	---------------	---------------	------------

With multiple take profit orders - Close half the position at the "Take Profit 1" and then move the stop to the entry value, close the balance of the position at the "Take Profit 2"

## Amended

### Stop Orders

GBPUSD	Buy Stop	1.5892	1.5646	1.60002	1.6152	246 pips
USDCAD	Sell Stop	1.2279	1.2424	1.2173	1.2068	148 pips
USDJPY	Buy Stop	124.589	121.974	125.595	126.601	144 pips

## Retained

### Stop Orders

### Limit Orders

AUDUSD	Buy Limit	0.7550	0.7480		0.7850	70 pips
EURGBP	Sell Limit	0.7380	0.7490		0.7140	110
EURUSD	Buy Limit	1.0870	1.0770		1.1440	100 pips
EURUSD	Sell Limit	1.1500	1.1565		1.1250	65 pips
GBPCHF	Buy Limit	1.4070	1.4020		1.4800	50 pips
USDCAD	Buy Limit	1.1980	1.1910		1.2500	70 pips

## NEW ORDERS:

With multiple take profit orders - Place an on Stop Order for half the position with the entry & Stop Loss and Take Profit at the "Take Profit 1". Place a 2nd order for half the position as before but Take Profit at the "Take Profit 2" target. Once the 1st target has been reached move the stop to the entry value.

NameOrder TypeEntryS.L. Take Profit 1Take Profit 2Trade Risk

Stop Orders

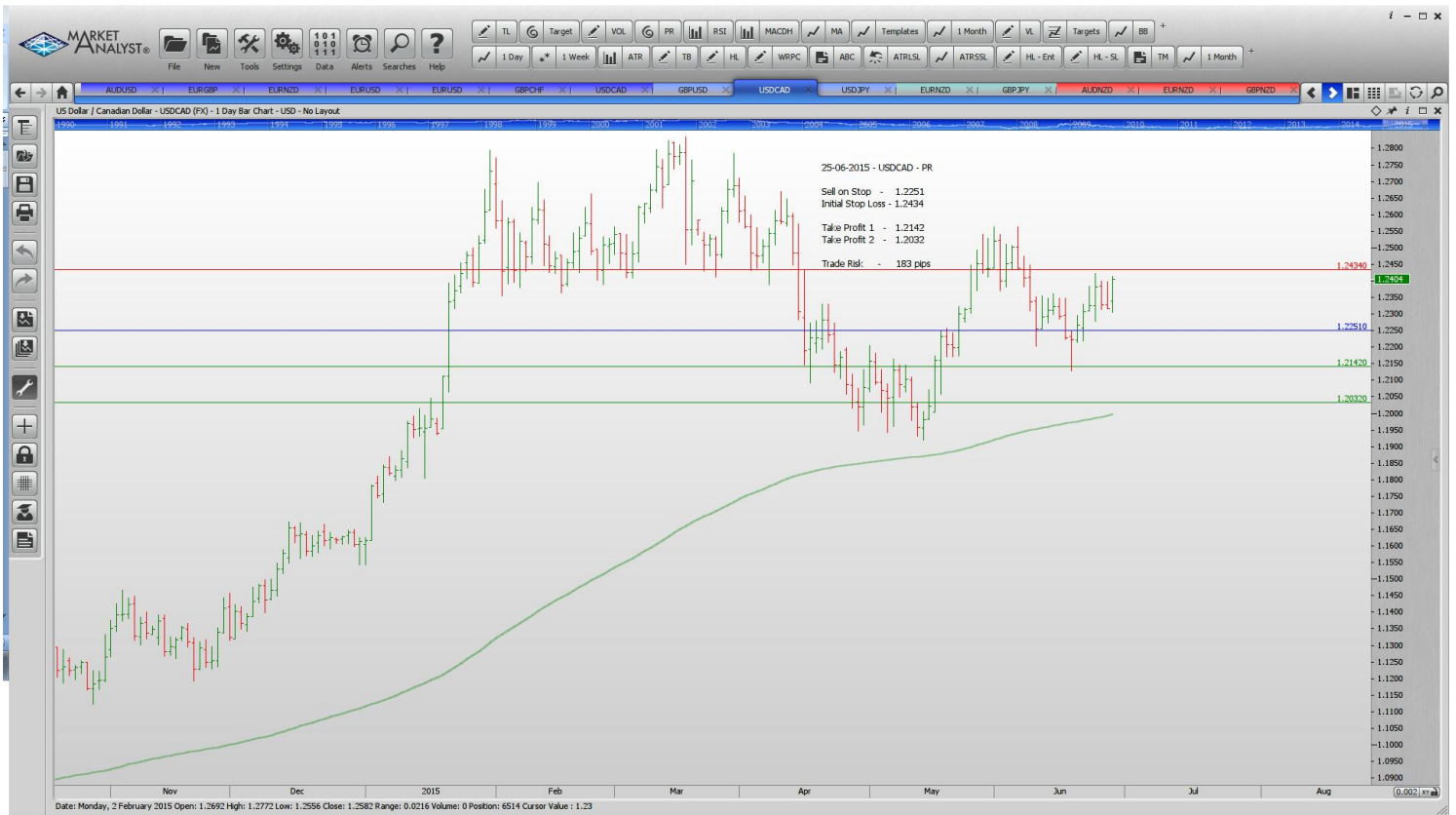
Limit Orders

EURNZDBuy Limit1.57001.5611.625090 pips

CHARTS:

Stop Orders





# Limit Orders

