

DAILY FUTURES

Wednesday 8th October 2014

Currencies – EUR, GBP, USD

There are 3 new orders for today.

Entries:

Exits: SP500 Index, SP Midcap 400, Nasdaq 100, Silver

The colour coding we are currently using is as follows:

Amended orders or stops

Retained Orders or stops – no change

New working orders

Immediate action required

Short Sell

Change Contract Specifications

OPEN POSITIONS:

ROLLOVERS: Code Contract ACTION Action NEW Expiry

Rollover needs to occur because the contract expires on a specified date and needs to be either sold or settled. To Roll a contract over is actually a misnomer - the process is to sell the current contract at market value and buying the next contract at market value.

Urgent - Close weekly - Lean Hogs at market

STOPS: Code Contract OLD ACTION NEW EXPIRY

Amended

| | | | | | | |
|-------|----|-------------|------|-------|------|----------|
| Cocoa | CC | CCZ4-Dec 14 | 3192 | Amend | 3106 | 14-11-14 |
|-------|----|-------------|------|-------|------|----------|

For those who wish to use CFD's over the Futures Contracts to reduce their trade risk, the following CFD's are available:

| | | | | | |
|-------|--------------|------|-------|------|----------|
| Cocoa | COCOANYDEC14 | 3194 | Amend | 3108 | 12-11-14 |
|-------|--------------|------|-------|------|----------|

Retained

| | | | | | | |
|---------------|-----|--------------|--------|--------|--------|----------|
| FTSE100 Index | LFT | FFIZ4-Dec 14 | 6589 | Retain | 6589 | 19-12-14 |
| Platinum | PL | PLF5-Jan 15 | 1186.5 | Retain | 1186.5 | 31-12-14 |

For those who wish to use CFD's over the Futures Contracts to reduce their trade risk, the following CFD's are available:

| | | | | | |
|---------------|---------------|--------|--------|--------|-----------|
| FTSE100 Index | FTSE100.I | 6609 | Retain | 6609 | No Expiry |
| Platinum | PLATINUMJAN15 | 1187.1 | Retain | 1187.1 | 29-12-14 |

WORKING ORDERS:

CANCELLED ORDERS:

Name: Code Contract Direction Entry Stop Loss Expiry

Amended

Retained

| | | | | | | |
|-----------------|----|--------------|------|---------|---------|----------|
| Brent Crude Oil | BC | LCOX4-Nov 14 | Buy | 95.26 | 91.55 | 16-10-14 |
| Nymex Crude | CL | CLX4-Nov 14 | Buy | 92.56 | 88.18 | 21-10-14 |
| Live Cattle | LC | LEZ4-Dec 14 | Sell | 164.525 | 167.675 | 08-12-14 |

For those who wish to use CFD's over the Futures Contracts to reduce their trade risk, the following CFD's are available:

| | | | | | |
|-----------------|-----------------|------|---------|---------|----------|
| Brent Crude Oil | OILUKNOV14 | Buy | 95.26 | 91.55 | 14-10-14 |
| Nymex Crude | OILUSNOV14 | Buy | 92.56 | 88.18 | 17-10-14 |
| Live Cattle | LIVECATTLEDEC14 | Sell | 164.375 | 167.525 | 04-12-14 |

NEW ORDERS:

| Name | Code | Contract | Direction | Entry | Stop Loss | Expiry |
|-------------|------|-------------|-----------|-------|-----------|----------|
| Soybean Oil | BO | ZLZ4-Dec 14 | Buy | 34.22 | 31.52 | 28-11-14 |
| Gold | GC | GCZ4-Dec 14 | Buy | 1218 | 1183.3 | 28-11-14 |
| Sugar # 11 | SB | SBH5-Mar 15 | Buy | 17.14 | 15384 | 27-02-15 |

For those who wish to use CFD's over the Futures Contracts to reduce their trade risk, the following CFD's are available:

| | | | | | | |
|-------------|--------------|-----|--------|--------|----------|--|
| Soybean Oil | No CFD | | | | | |
| Gold | GOLDDEC14 | Buy | 1219.2 | 1184.5 | 26-11-14 | |
| Sugar # 11 | SUGARNYMAR15 | Buy | 17.16 | 15.91 | 25-11-14 | |

Trade Risk and Margin

We have been including the Trade Risk in the charts for people to be able to judge the comfortable Position size to fit with their trade risk parameters.

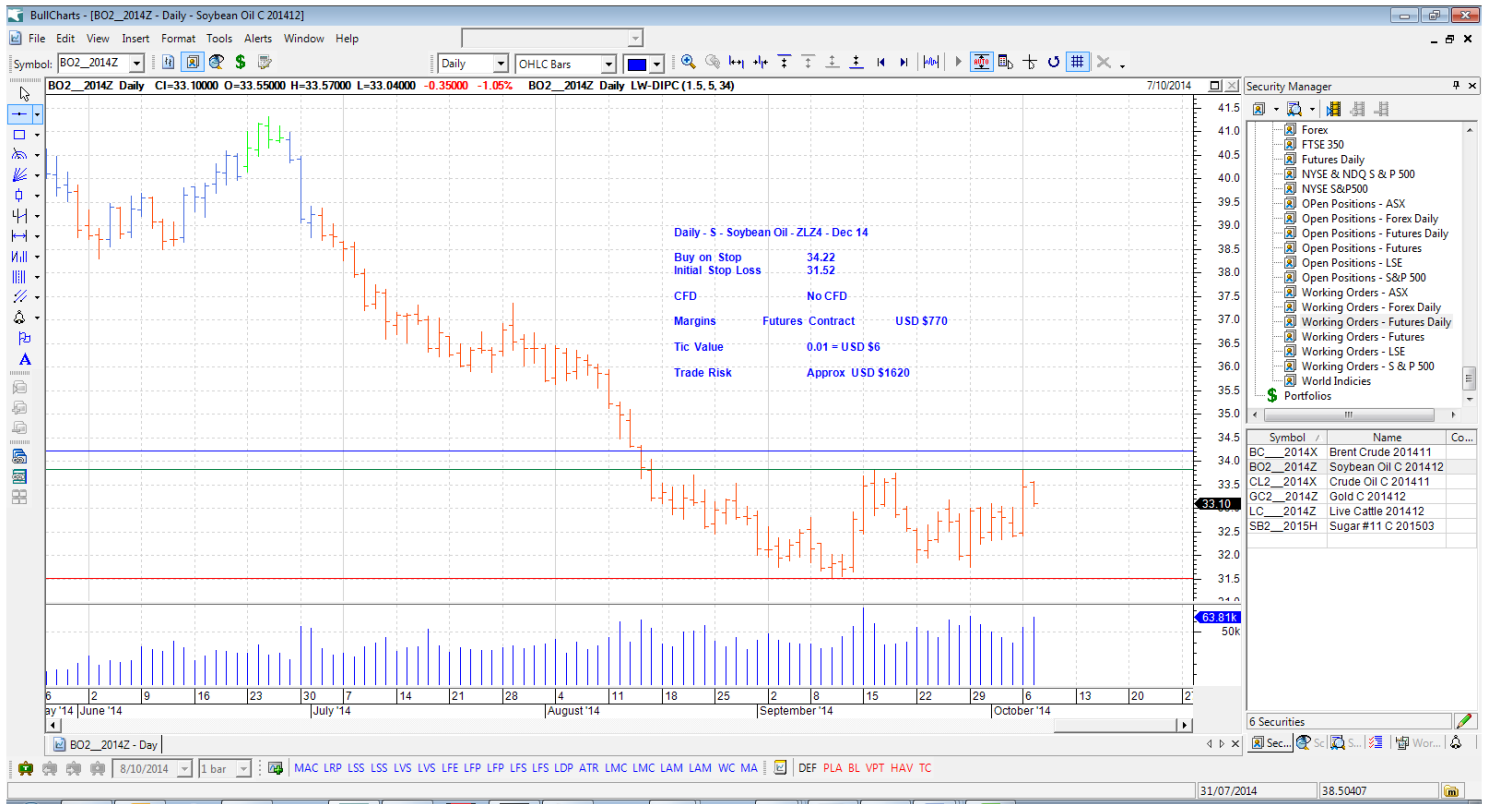
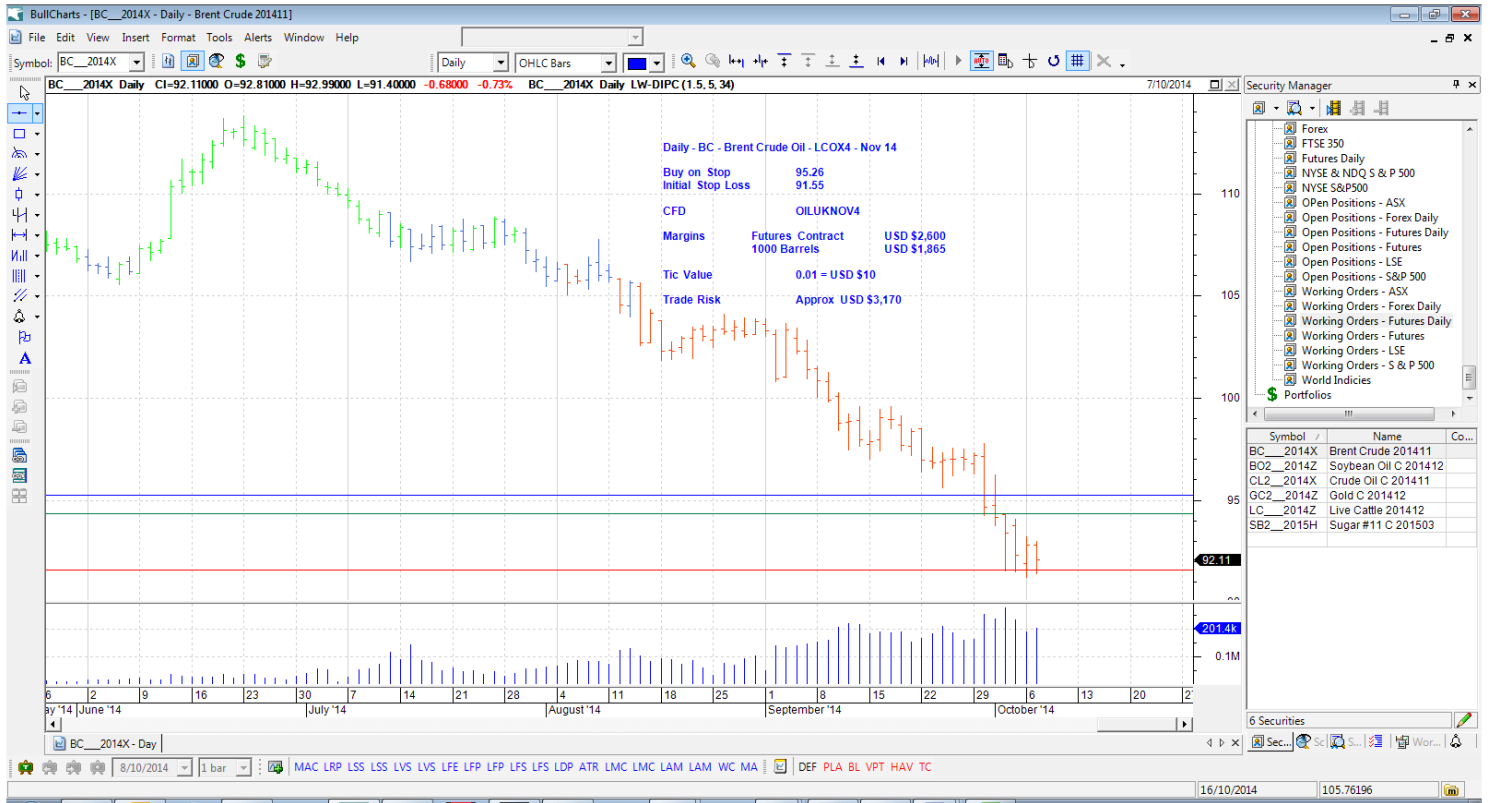
How to read this and adapt to your individual circumstances - the number of CFD's shown is equivalent to the Futures Contract Size. Calculate your own trade risk as a ratio of the posted Contract Trade risk and adjust the number of CFD's accordingly

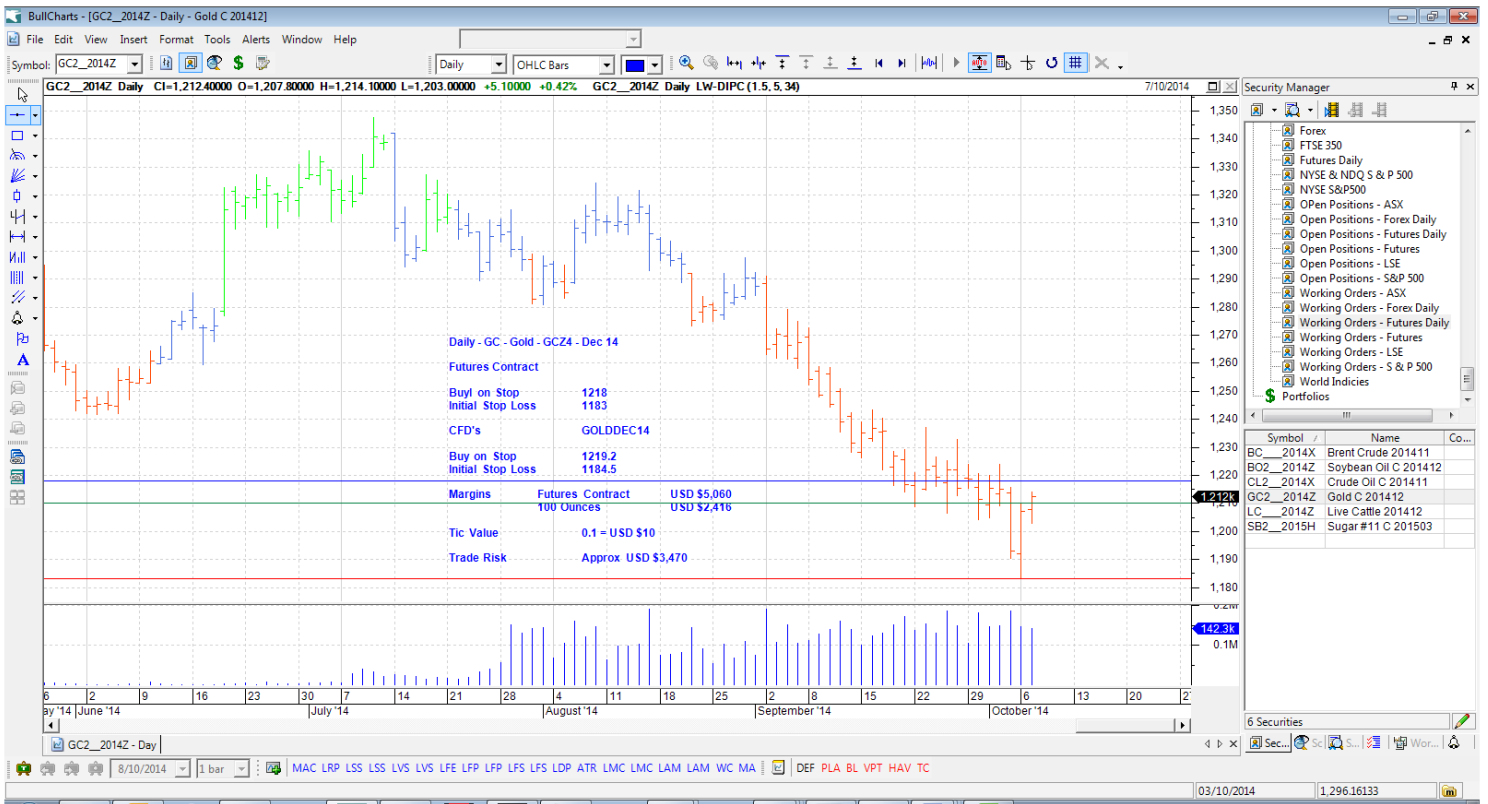
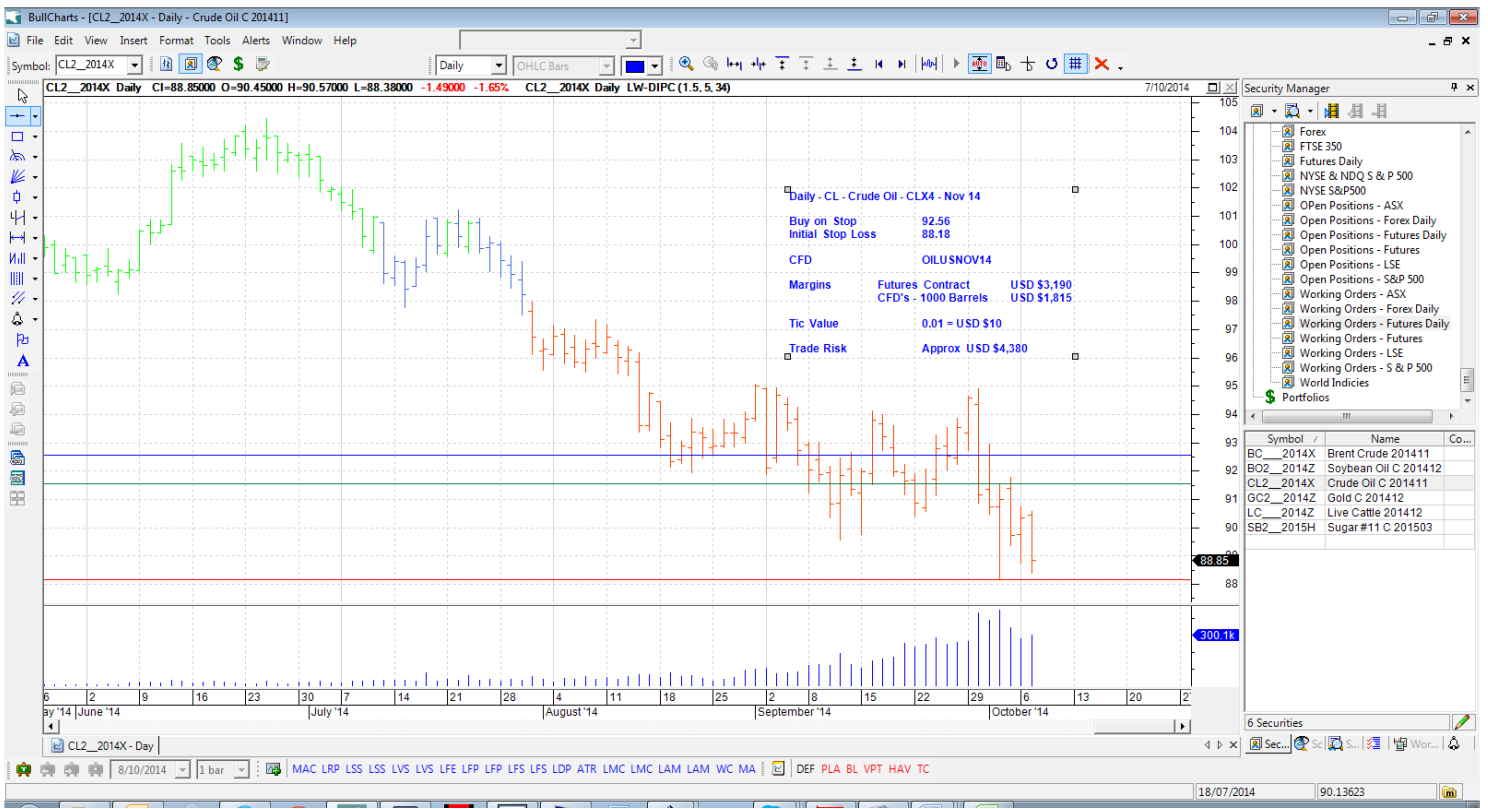
| Name | Code | Contract | # of CFD's | Trade Risk | Margin |
|-------------|------|------------------|-----------------|------------|---------|
| Brent Crude | BC | LCOX4-Nov 14 | 1 Contract | \$3,710 | \$2,600 |
| | BC | OILUKNOV14 | 1000 Barrels | \$3,710 | \$1,865 |
| Soybean Oil | BO | ZLZ4-Dec 14 | 1 Contract | \$1,620 | \$770 |
| | | No CFD | | | |
| Crude Oil | CL | CLX4-Nov 14 | 1 Contract | \$4,380 | \$3,190 |
| | CL | OILUSNOV14 | 1000 Barrels | \$4,380 | \$1,815 |
| Gold | GC | GCZ4-Dec 14 | 1 Contract | \$3,470 | \$5,060 |
| | GC | GOLDDEC14 | 100 Troy Ounces | \$3,470 | \$2,416 |
| Live Cattle | LC | LEZ4-Dec 14 | 1 Contract | \$1,260 | \$1,320 |
| | | LIVECATTLEDEC 14 | 40,000 lbs | \$1,260 | \$3,301 |
| Sugar # 11 | SB | SBH5-Mar 15 | 1 Contract | \$1,386 | \$935 |
| | | SUGARNYMAR15 | 112,000 lbs | \$1,386 | \$948 |

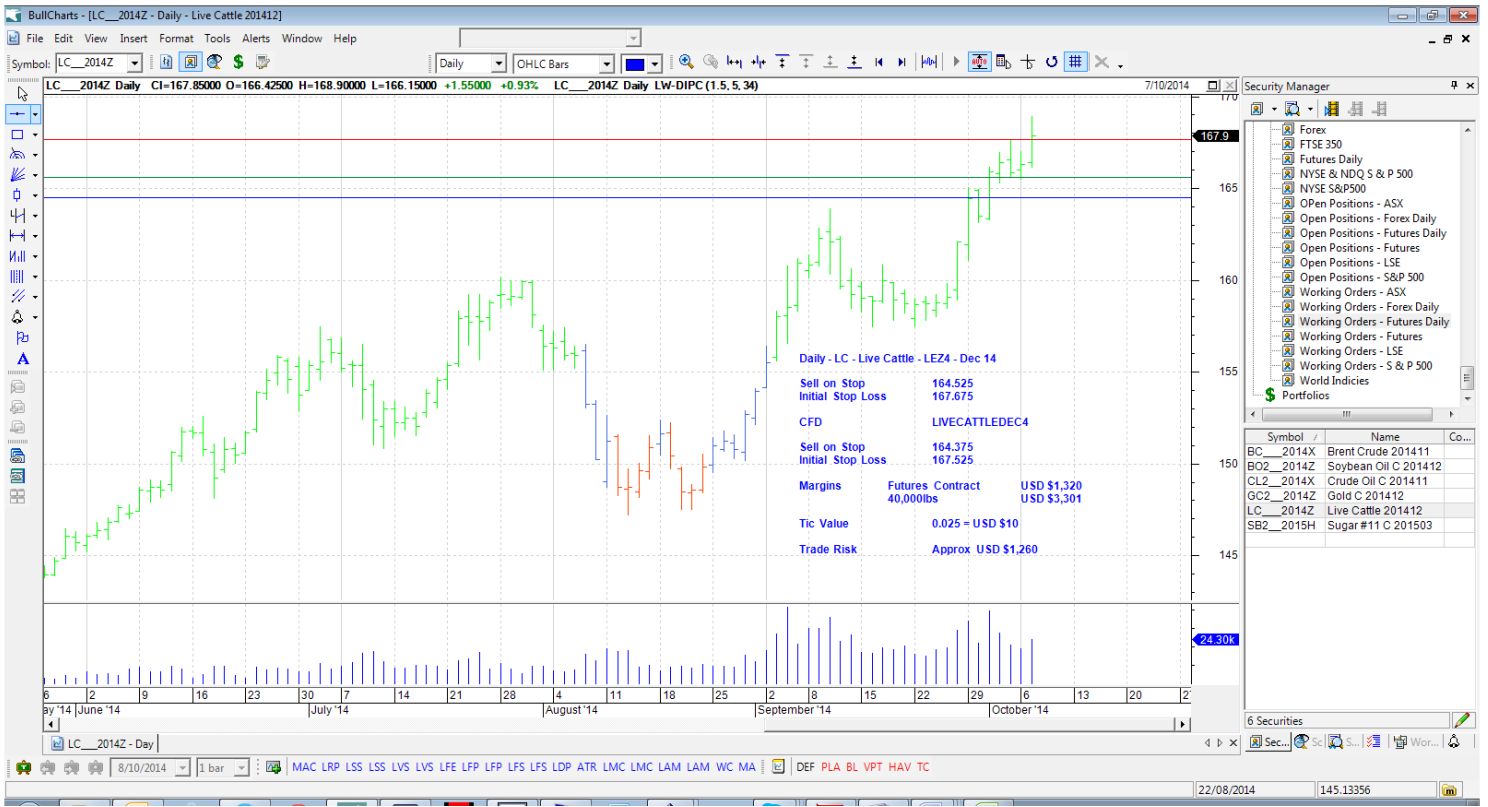
To clear up any confusion over the OIL CFD's OILUK represents Brent Crude (British North Sea Oil and its contract code "LCO" is for London Crude Oil) and OILUS represents Nymex Light Sweet Crude (West Texas Intermediate known as both CL & WTI).

The Futures Contract for Heating Oil was renamed from Heating Oil to NY Harbour ULSD, the Code for this remains the same though - HO. The CFD remains the same name. There has been some confusion over this change.

CHARTS:





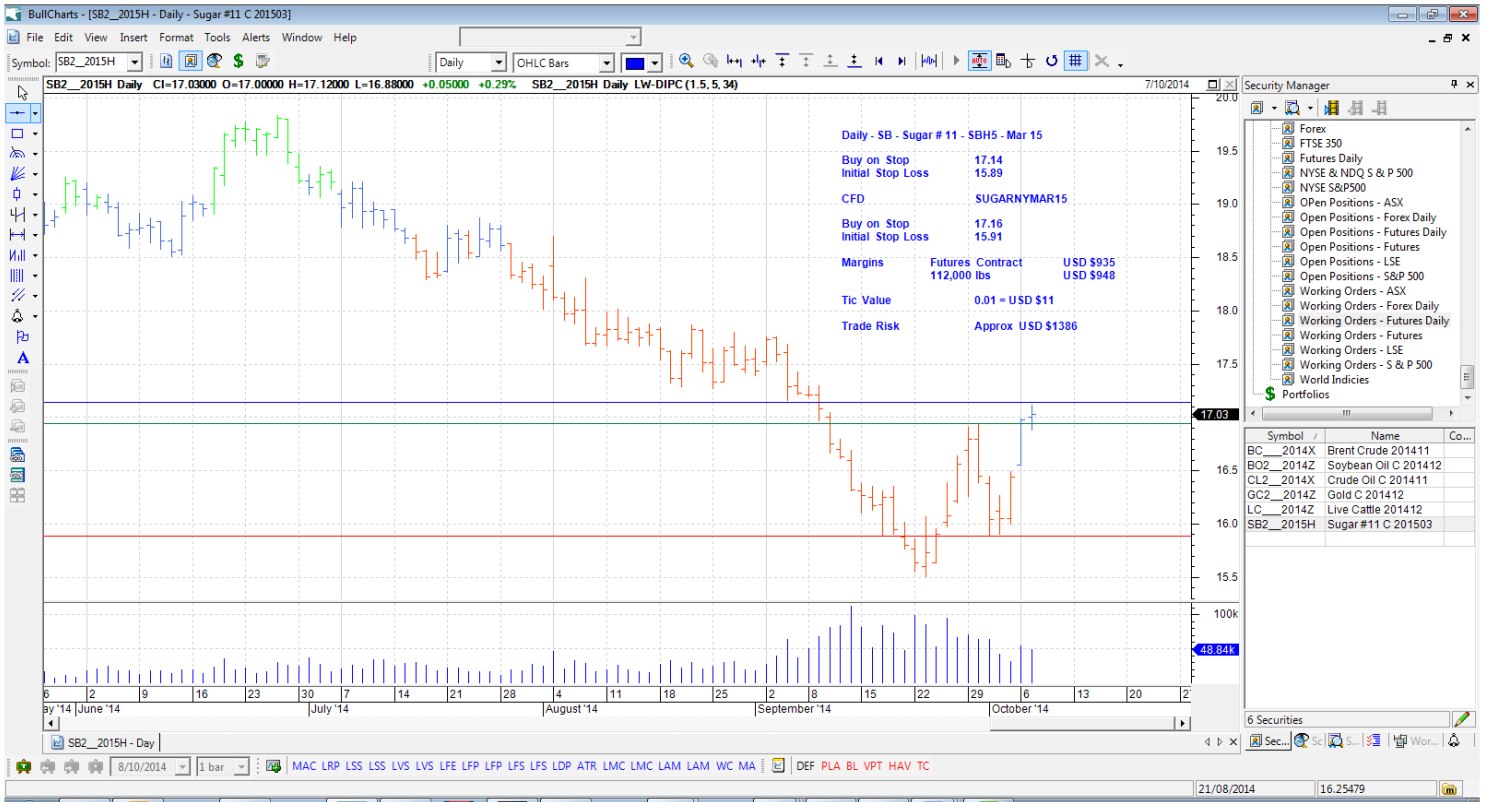


Security Manager

- Forex
- FTSE 350
- Futures Daily
- NYSE & NDQ S & P 500
- NYSE S&P500
- Open Positions - ASX
- Open Positions - Forex Daily
- Open Positions - Futures Daily
- Open Positions - Futures
- Open Positions - LSE
- Open Positions - S&P 500
- Working Orders - ASX
- Working Orders - Forex Daily
- Working Orders - Futures
- Working Orders - LSE
- Working Orders - S & P 500
- World Indices
- Portfolios

| Symbol | Name | Co... |
|-----------|----------------------|-------|
| BC_2014X | Brent Crude 201411 | |
| BO2_2014Z | Soybean Oil C 201412 | |
| CL2_2014X | Crude Oil C 201411 | |
| GC2_2014Z | Gold C 201412 | |
| LC_2014Z | Live Cattle 201412 | |
| SB2_2015H | Sugar #11 C 201503 | |

6 Securities



Security Manager

- Forex
- FTSE 350
- Futures Daily
- NYSE & NDQ S & P 500
- NYSE S&P500
- Open Positions - ASX
- Open Positions - Forex Daily
- Open Positions - Futures Daily
- Open Positions - Futures
- Open Positions - LSE
- Open Positions - S&P 500
- Working Orders - ASX
- Working Orders - Forex Daily
- Working Orders - Futures
- Working Orders - LSE
- Working Orders - S & P 500
- World Indices
- Portfolios

| Symbol | Name | Co... |
|-----------|----------------------|-------|
| BC_2014X | Brent Crude 201411 | |
| BO2_2014Z | Soybean Oil C 201412 | |
| CL2_2014X | Crude Oil C 201411 | |
| GC2_2014Z | Gold C 201412 | |
| LC_2014Z | Live Cattle 201412 | |
| SB2_2015H | Sugar #11 C 201503 | |

6 Securities