

# DAILY FUTURES

## Thursday 22nd January 2015

Currencies – EUR, GBP, USD

---

There are 0 new orders for today.

---

### Entries:

### Exits:

The colour coding we are currently using is as follows:

Amended orders or stops

Retained Orders or stops – no change

New working orders

Immediate action required

Short Sell

## OPEN POSITIONS:

**ROLLOVERS: Code      Contract    ACTION    Action      NEW      Expiry**

Rollover needs to occur because the contract expires on a specified date and needs to be either sold or settled. To Roll a contract over is actually a misnomer - the process is to sell the current contract at market value and buying the next contract at market value.

**STOPS:              Code              Contract    OLD              ACTION    NEW              EXPIRY**

### Amended

For those who wish to use CFD's over the Futures Contracts to reduce their trade risk, the following CFD's are available:

### Retained

NY Harbour	HO	HOG5-Feb 15	173.47	Retain	173.47	30-01-15
------------	----	-------------	--------	--------	--------	----------

For those who wish to use CFD's over the Futures Contracts to reduce their trade risk, the following CFD's are available:

NY Harbour	HEATINGOILFEB 15	173.47	Retain	173.47	28-01-15
------------	------------------	--------	--------	--------	----------

### **WORKING ORDERS:**

## CANCELLED ORDERS:

Name: Code Contract Direction Entry Stop Loss Expiry

## Amended

## Retained

Brent Crude	BC	LCOH5-Mar 15	Sell	46.64	52.42	12-02-15
Crude Oil	CL	CLH5-Mar 15	Sell	45.05	51.73	20-01-15
Gasoil	GO	FPG5-Feb 15	Sell	452.75	497	12-02-15
RBOB Gasoline	RB	RBH5-Mar 15	Sell	125.67	141.49	30-01-15

For those who wish to use CFD's over the Futures Contracts to reduce their trade risk, the following CFD's are available:

Brent Crude	OILUKMAR15		Sell	46.64	52.42	10-02-15
Crude Oil	OILUSFEB15		Sell	45.05	51.73	16-01-15
Gasoil	GASOILUK15		Sell	452.75	497	10-02-15
RBOB Gasoline	GASOLINEUSMAR5		Sell	125.67	141.49	28-01-15

## NEW ORDERS:

Name Code Contract Direction Entry Stop Loss Expiry

## Trade Risk and Margin

We have been including the Trade Risk in the charts for people to be able to judge the comfortable Position size to fit with their trade risk parameters.

How to read this and adapt to your individual circumstances - the number of CFD's shown is equivalent to the Futures Contract Size. Calculate your own trade risk as a ratio of the posted Contract Trade risk and adjust the number of CFD's accordingly

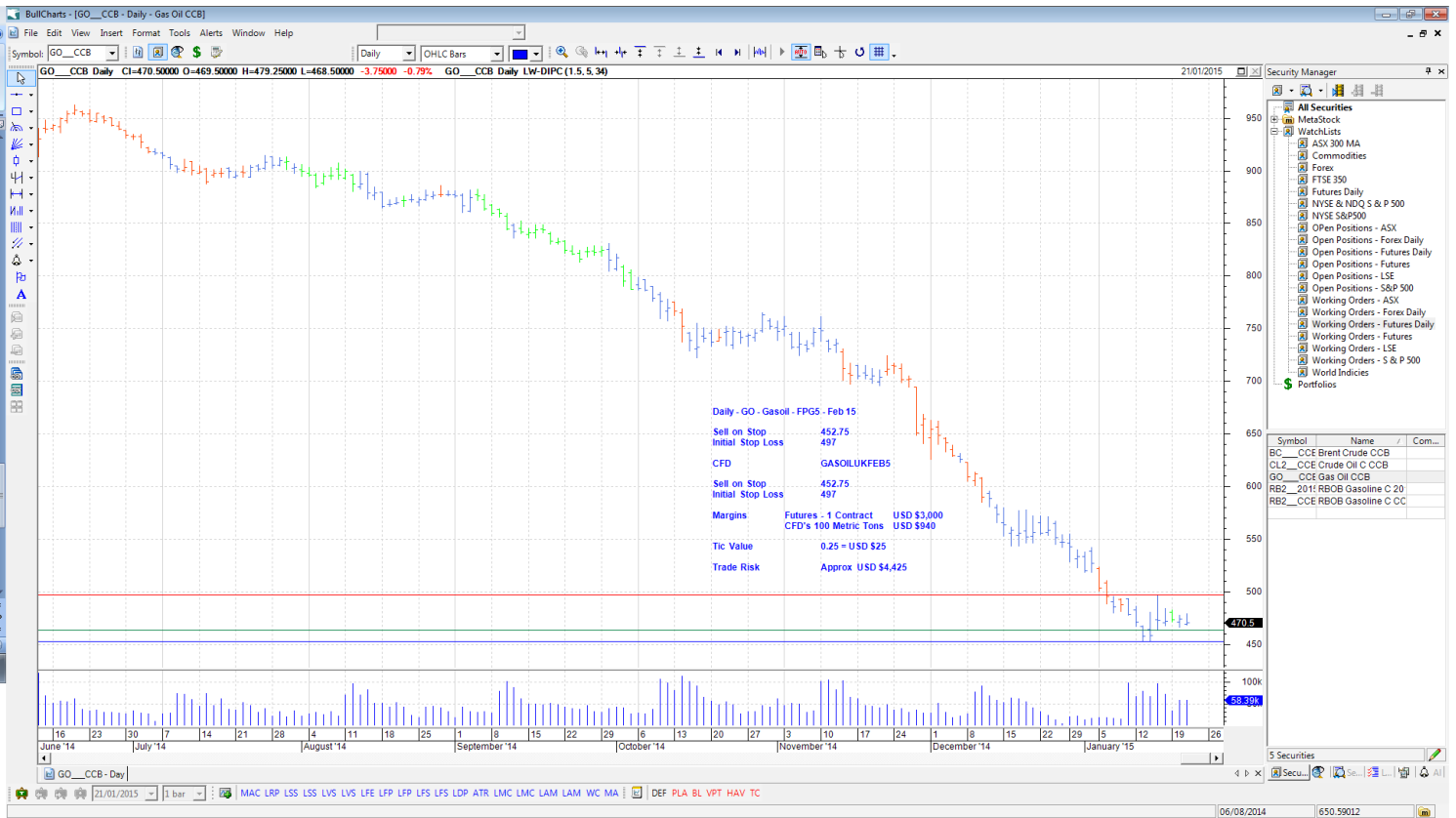
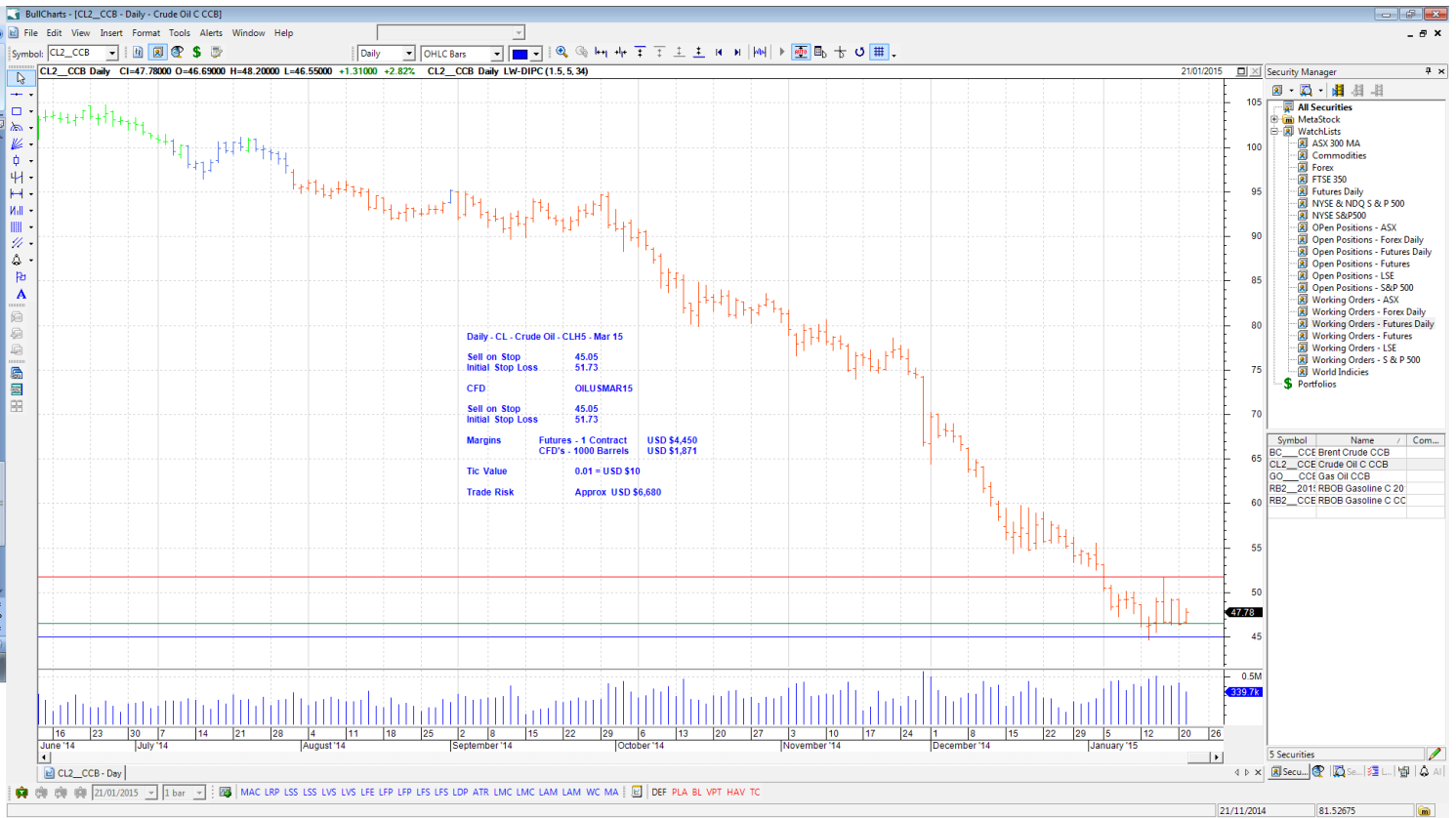
Name	Code	Contract	# of CFD's	Trade Risk	Margin
Brent Crude	BC	LCH5-Mar 15	1 Contract	USD\$5,780	USD\$4,150
	OILUKMAR15		1,000 Barrels		USD\$1,932
Nymex Crude	CL	CLG5-Mar 15	1 Contract	USD\$6,680	USD\$4,450
	OILUSMAR15		1,000 Barrels		USD\$1,872
Gasoil	GO	FPG5-Feb 15	1 Contract	USD \$4,425	USD \$3,000
	GASOILUKFEB14		100 Metric Tons		USD \$ 940
Gasoline	RB	RBG5- Mar 15	1 Contract	USD \$6,644	USD \$4,700
	GASOLINEUSMAR15		42,000 Gallons		USD \$2,190

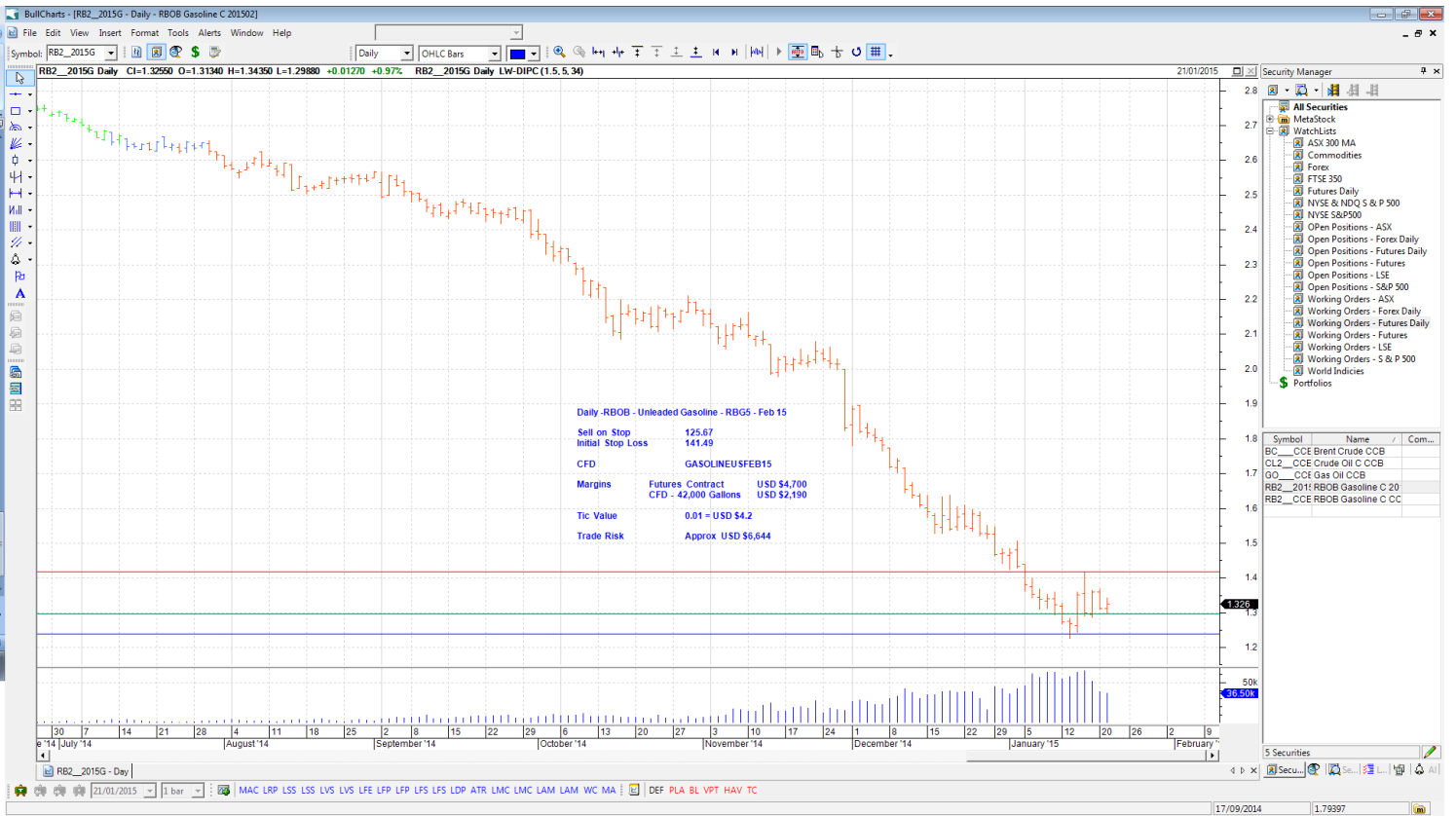
To clear up any confusion over the OIL CFD's OILUK represents Brent Crude (British North Sea Oil and its contract code "LCO" is for London Crude Oil) and OILUS represents Nymex Light Sweet Crude (West Texas Intermediate known as both CL & WTI).

The Futures Contract for Heating Oil was renamed from Heating Oil to NY Harbour ULSD, the Code for this remains the same though - HO. The CFD remains the same name. There has been some confusion over this change.

## CHARTS:







- Security Manager
- All Securities
  - MetaStock
  - WatchLists
  - ASX 300 MA
  - Commodities
  - Forex
  - FTSE 350
  - Futures Daily
  - NYSE & NYSE S&P 500
  - NYSE S&P500
  - Open Positions - ASX
  - Open Positions - Forex Daily
  - Open Positions - Futures Daily
  - Open Positions - Futures
  - Open Positions - LSE
  - Open Positions - S&P 500
  - Working Orders - ASX
  - Working Orders - Forex Daily
  - Working Orders - Futures Daily
  - Working Orders - Futures
  - Working Orders - LSE
  - Working Orders - S & P 500
  - World Indices
  - Portfolios

Symbol	Name	Com...
BC	CCF Brent Crude CCB	
CL2	CCF Crude Oil C CCB	
GO	CCF Gas Oil CCB	
RB2_2011	RBOB Gasoline C 20	
RB2	CCF RBOB Gasoline C CC	