

Week Ending 2nd December, 2011

The Yanks are at it again, leaving everything until the last minute – again their infighting is going on until there is no time left for them to make an informed decision as opposed to a hasty, just in time decision and all the ramifications. One day the Democrats & Republicans may get their act together and act in the best interests of the Country rather than their own self interests.

The biggest issue is that this indecision creates volatility in the global market places as everyone else is waiting to see which way they will go and can then make an informed decision themselves

We had 2 entries and 1 exit this week

Have a great week all

ASX:

Entries: Acrux Limited & CSR

Exits: Clough Limited

The colour coding we are currently using is as follows:

Amended orders or stops

Retained Orders or stops – no change

New working orders

Immediate action required

Short Sell

Currency – AUD\$

Open Positions

Stops:	Old	Action	New
--------	-----	--------	-----

Amended

Beach Energy	BPT	1.215	Amend	1.237
Mincor	MCR	0.955	Amend	0.955
Paladin Energy	PDN	2.22	Amend	2.22

Retained

Acrux Limited	ACR	3.25	Retain	3.25
APN News & Media	APN	0.97	Retain	0.9073
CSR Limited	CSR	2.345	Retain	2.345
Hastings Diversified	HDF	1.645	Retain	1.645
Integra Mining	IGR	0.522	Retain	0.522
Saracen Minerals	SAR	0.771	Retain	0.771
Sunland Group	SDG	0. 8308	Retain	0.8308
Specialty Fashion	SFH	0.64	Retain	0.64

Cancelled Orders

Coca Cola Amatil, Flexigroup, Mermaid Marine, SAI Global & Sandfire Resources

Working Orders

Commodity	Code	Direction	Entry	Stop
-----------	------	-----------	-------	------

Amended

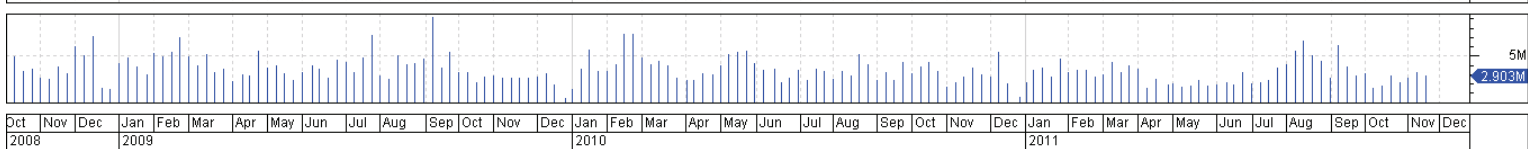
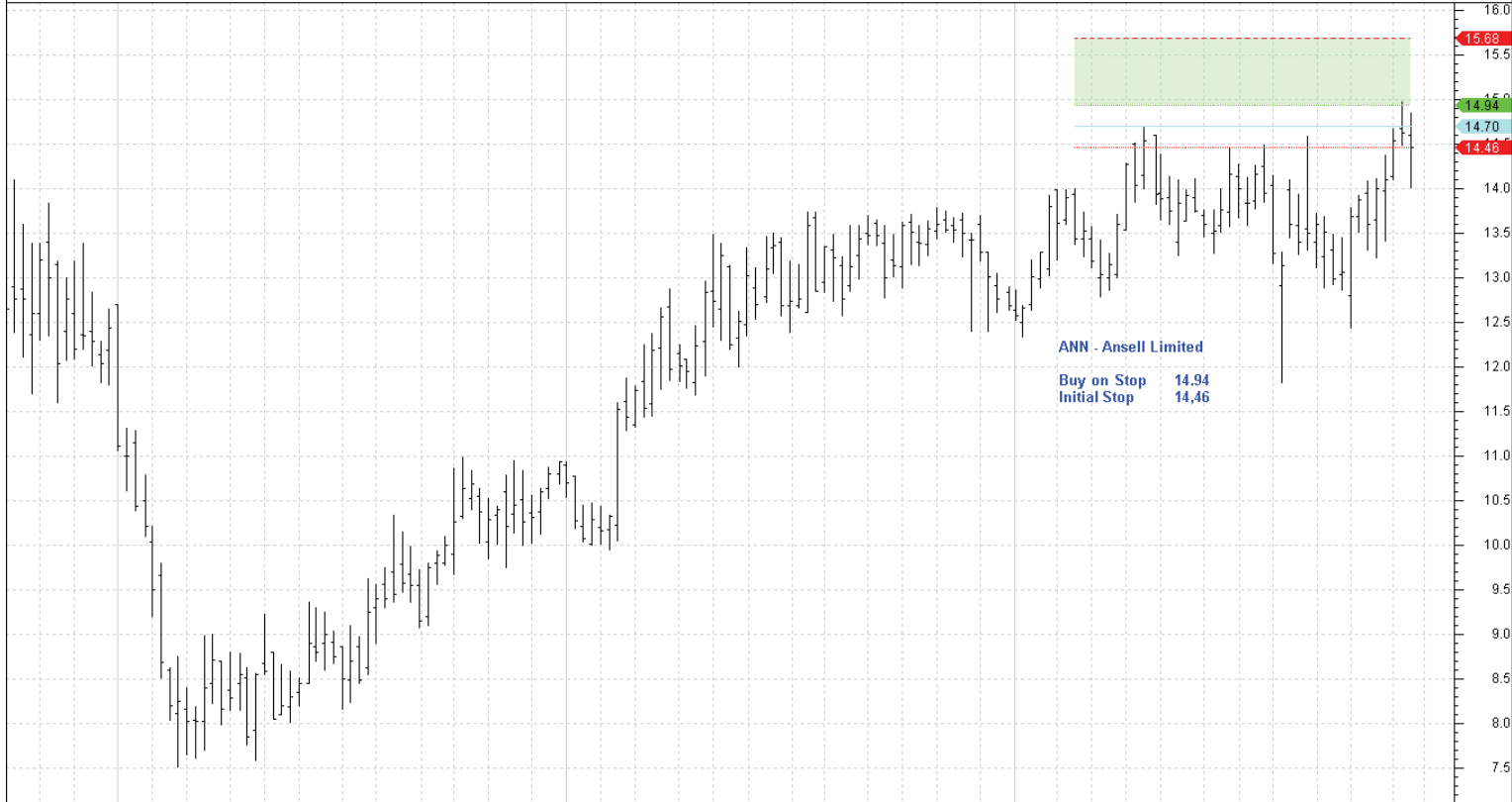
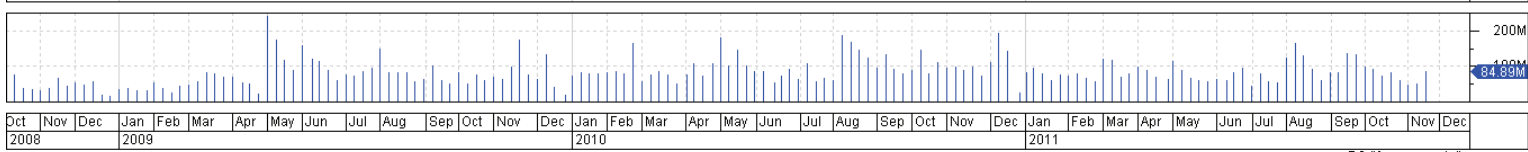
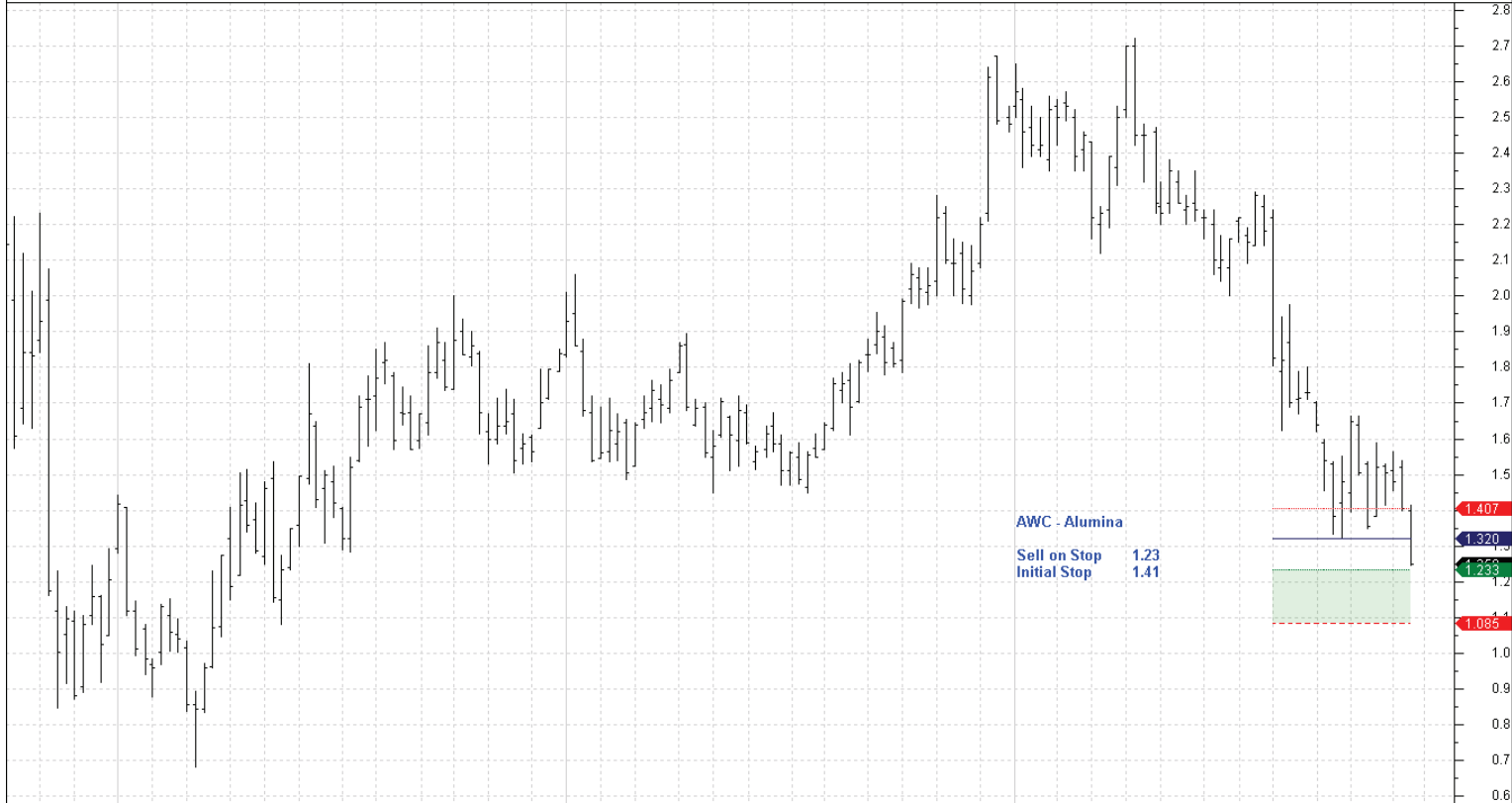
Alumina	AWC	Sell	1.233	1.407
Ansell	ANN	Buy	14.94	14.46
ASG Group	ASZ	Buy	0.917	0.883
Challenger Financial Group	CGF	Sell	3.87	4.19
Toll Holdings	TOL	Buy	5.27	4.71

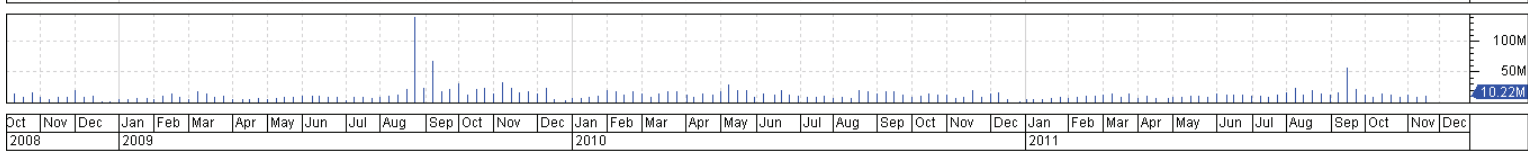
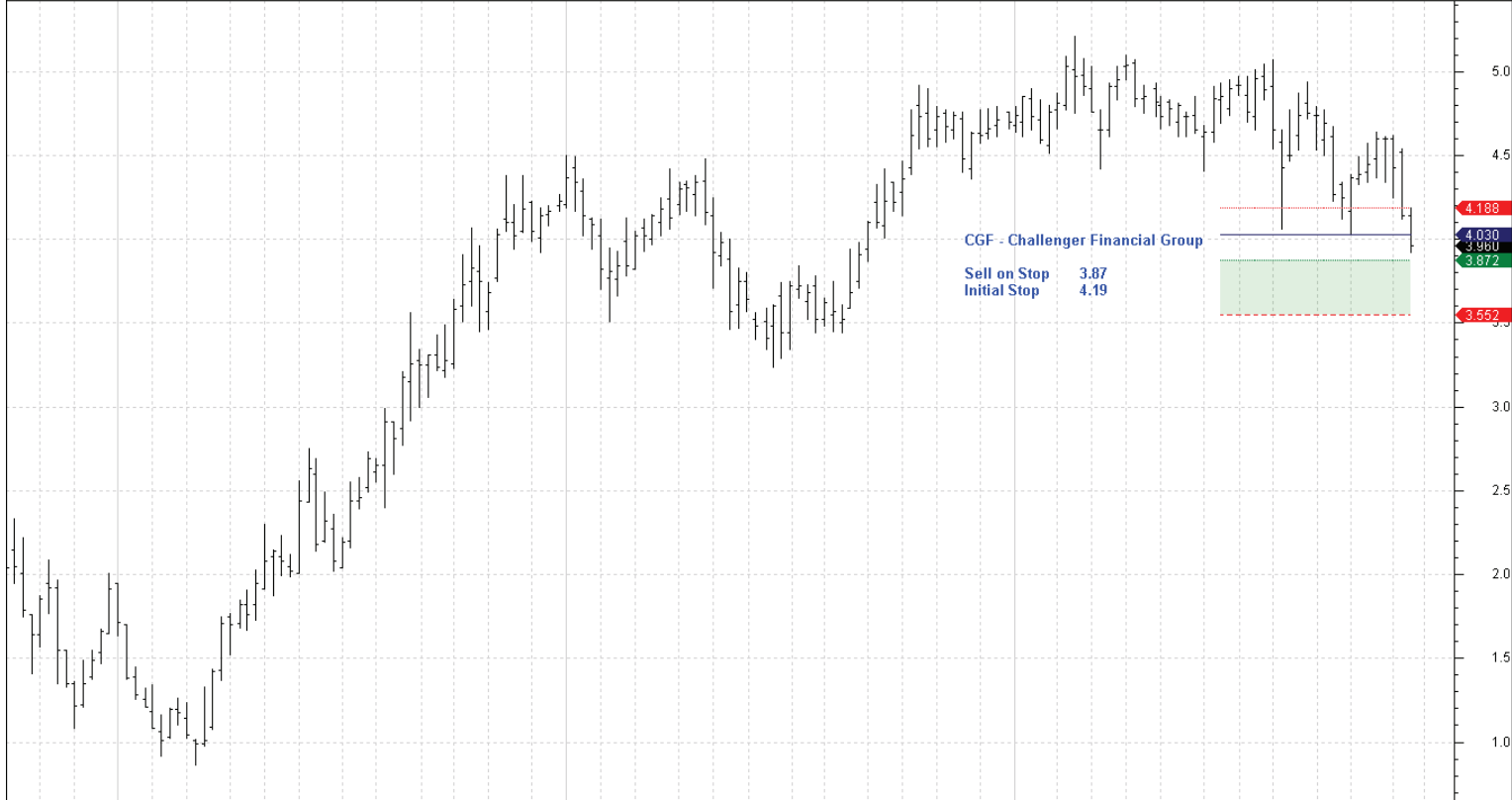
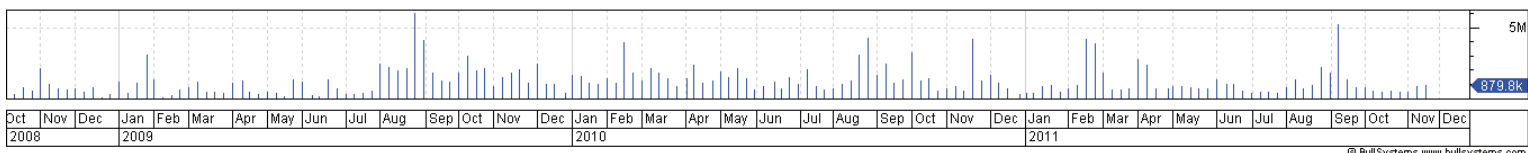
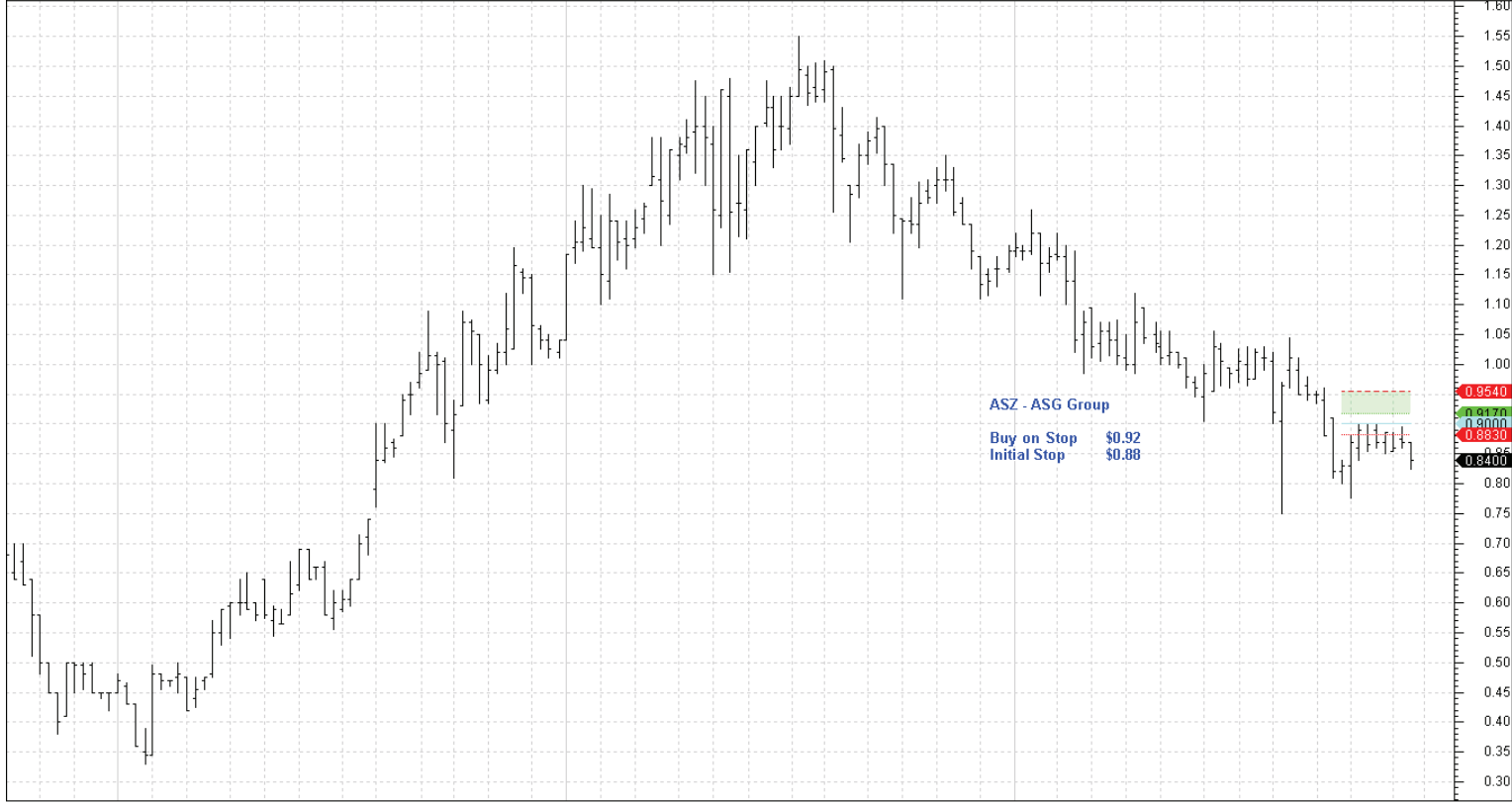
Retained

New

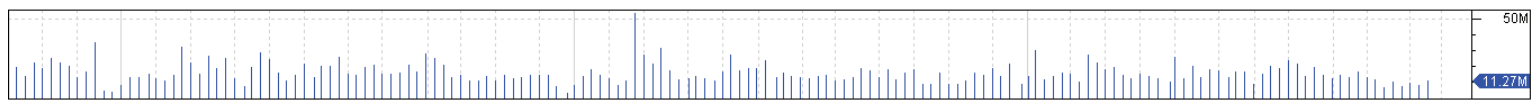
Nil

Charts





25-11-2011



© Bull Systems www.bullsystems.com