

Week Ending 6th April 2012

There is not a lot of movement on the ASX at present and are only a couple of new potential opportunities are standing out at this time.

Have a great week all

Australian Stock Exchange: - Currency – AUD\$

Entries:

Exits:

The colour coding we are currently using is as follows:

Amended orders or stops

Retained Orders or stops – no change

New working orders

Immediate action required

Short Sell

Open Positions

Stops:		Old	Action	New
<u>Amended</u>				
Macquarie Group	MQG	26.75	Amend	27.11
Toll Holdings	TOL	5.472	Amend	5.622

Retained

Australia Infrastructure AIX		1.994	Retain	1.994
AWE Limited	AWE	1.74	Retain	5.295
Hastings Diversified	HDF	2.027	Retain	2.027
Telecom Corp of N.Z.	TEL	1.734	Retain	1.734

Cancelled Orders

Working Orders

Commodity	Code	Direction	Entry	Stop
-----------	------	-----------	-------	------

Amended

Nil

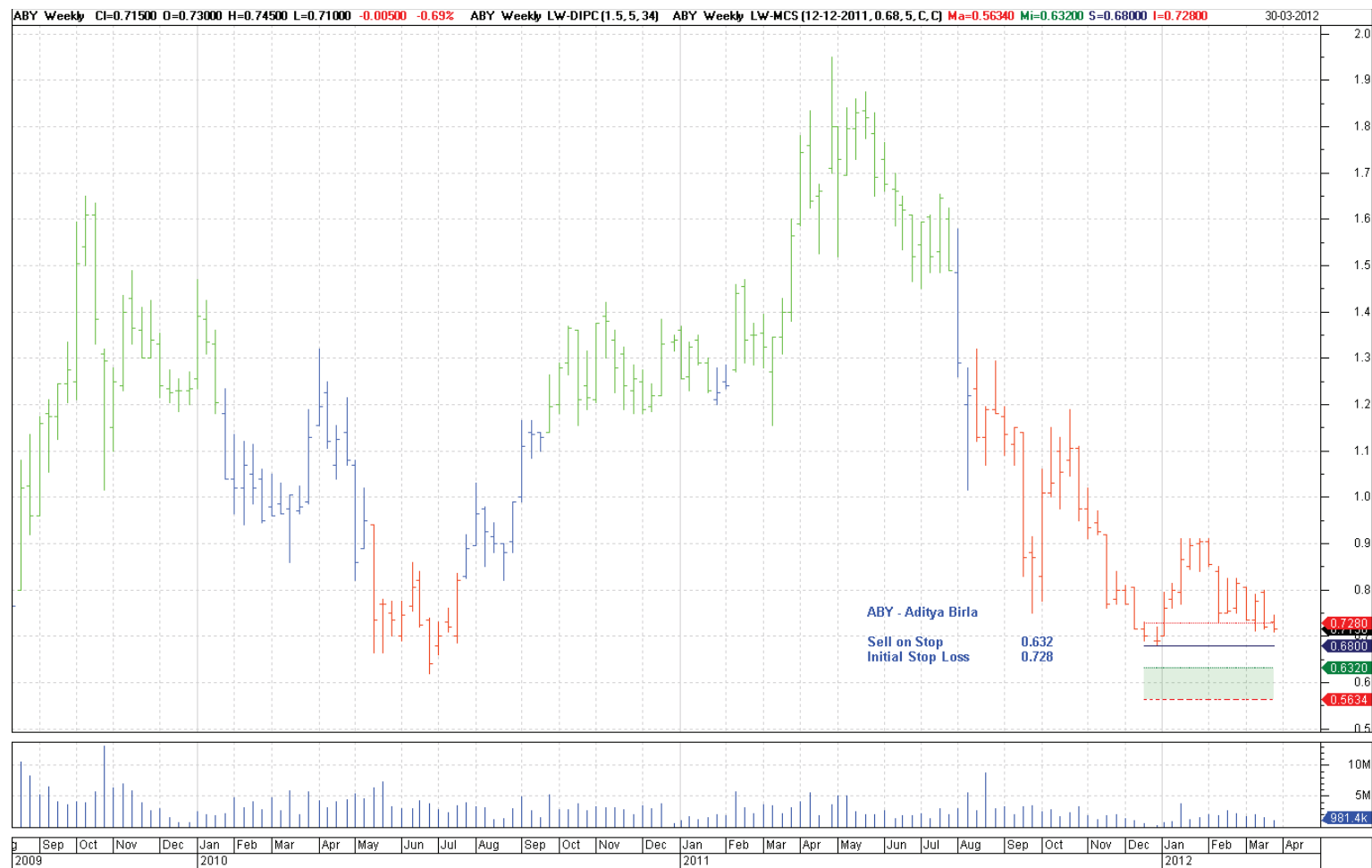
Retained

Aditya Birla	ABY	Sell	0.632	0.728
Arafura Resources	ARU	Sell	0.28	0.32

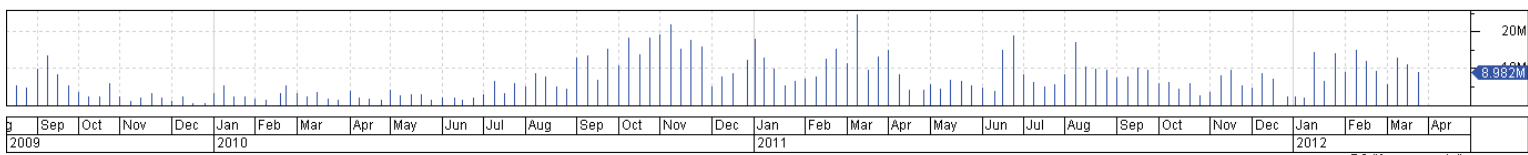
New

Bradken Limited	BKN	Buy	9.106	8.474
Invocare	INV	Buy	8.12	7.84
Mount Gibson Iron	MGX	Sell	1.078	1.162
Monadelphous Group	MND	Buy	24.72	23.70

Charts

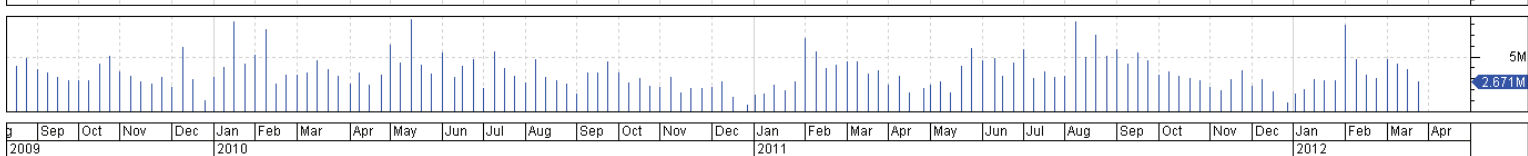
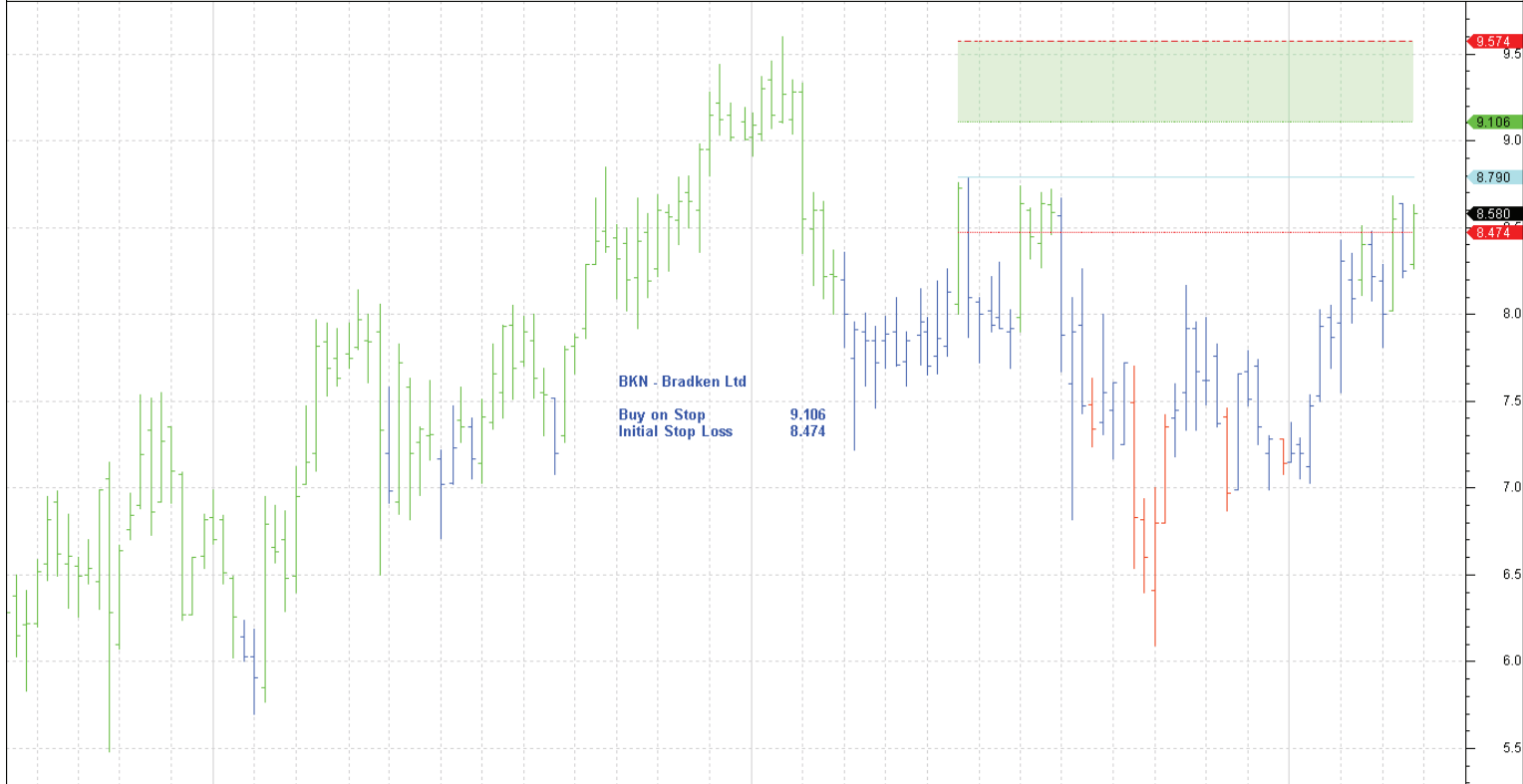


ARU Weekly CI=0.31000 O=0.29500 H=0.32000 L=0.29500 +0.01500 +5.08% ARU Weekly LW-DIPC(1.5,5,34) ARU Weekly LW-MCS(06-02-2012,0.3,5,C,C) Ma=0.24500 Mi=0.27800 S=0.30000 I=0.32200 30-03-2012



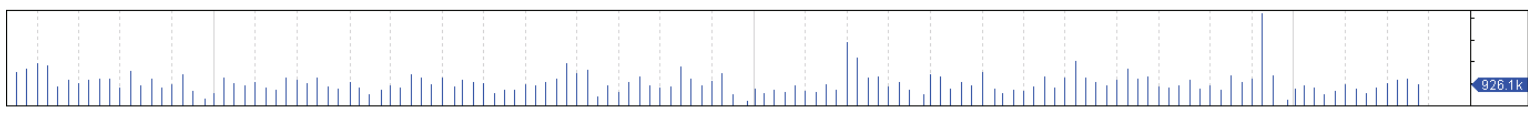
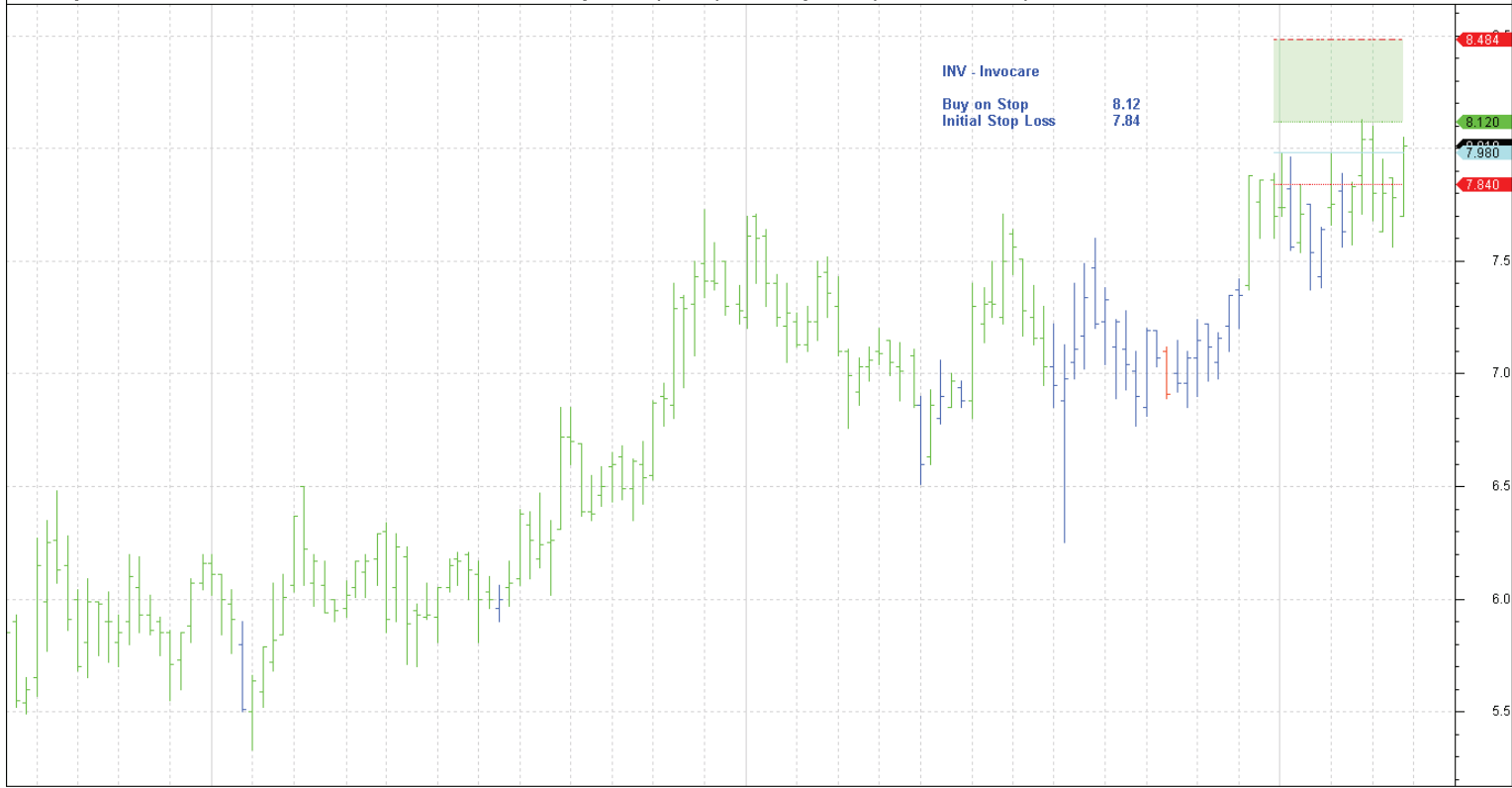
© BullSystems www.bullsystems.com

BKN Weekly CI=8.58000 O=8.29000 H=8.63000 L=8.26000 +0.33000 +4.00% BKN Weekly LW-DIPC(1.5,5,34) BKN Weekly LW-MCL(16-05-2011,8.79,5,C,C) Ma=9.57400 Mi=9.10600 I=8.79000 I=8.47400 30-03-2012



© BullSystems www.bullsystems.com

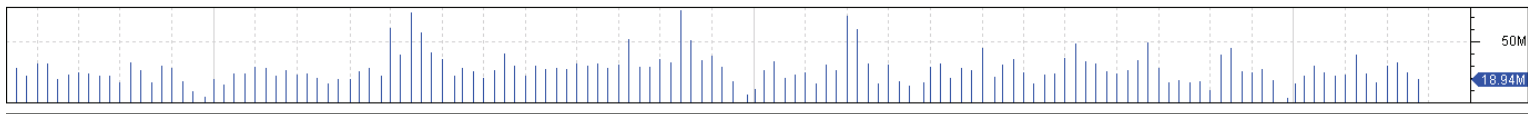
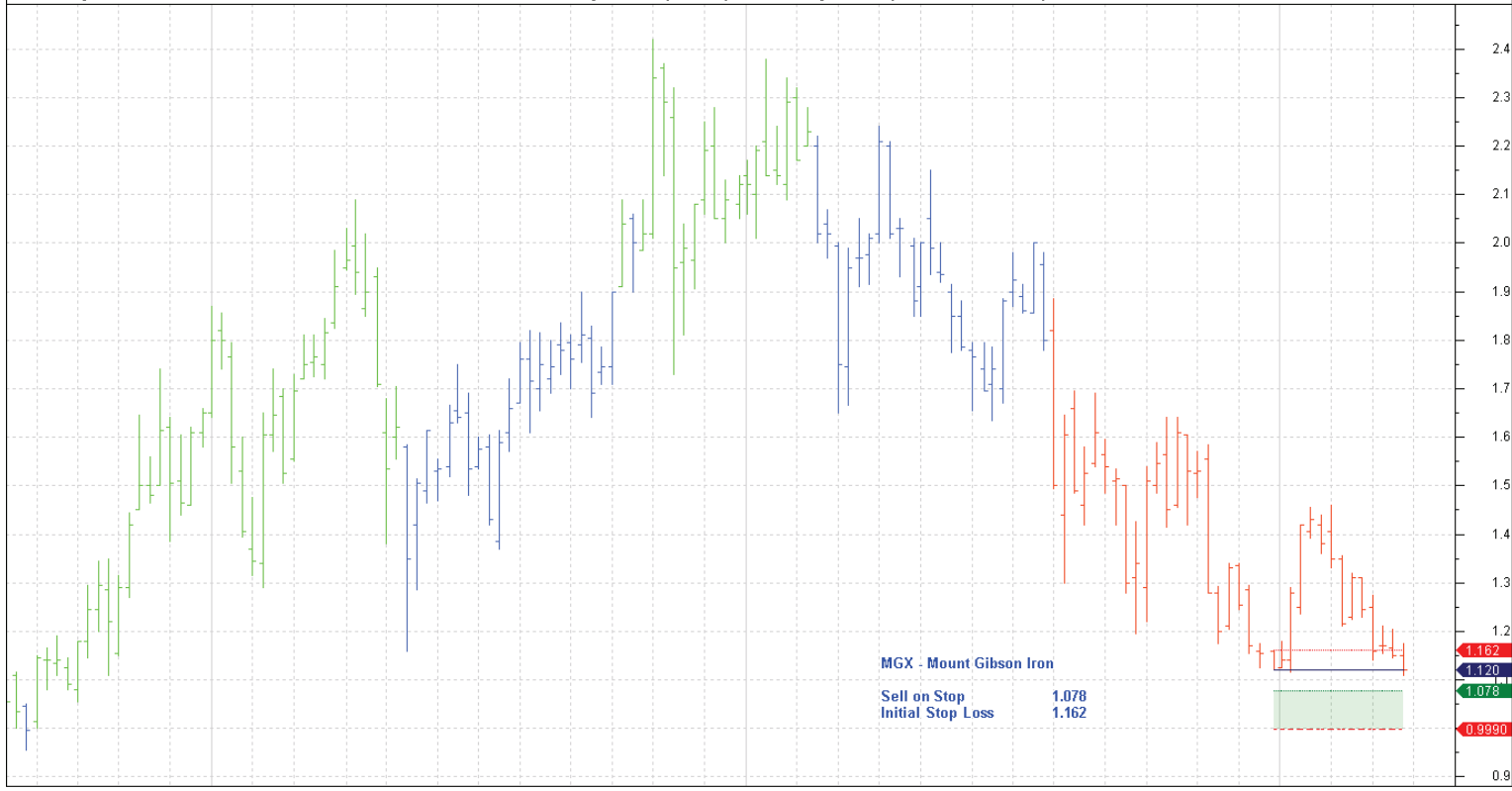
IVC Weekly CI=8.01000 O=7.70000 H=8.05000 L=7.70000 +0.23000 +2.96% IVC Weekly LW-DIPC(1.5,5,34) IVC Weekly LW-MCL(19-12-2011,7.98,5,C,C) Ma=8.48400 Mi=8.12000 R=7.98000 I=7.84000 30-03-2012



g Sep Oct Nov Dec Jan Feb Mar Apr May Jun Jul Aug Sep Oct Nov Dec Jan Feb Mar Apr 2009 2010 2011 2012

© BullSystems www.bullsystems.com

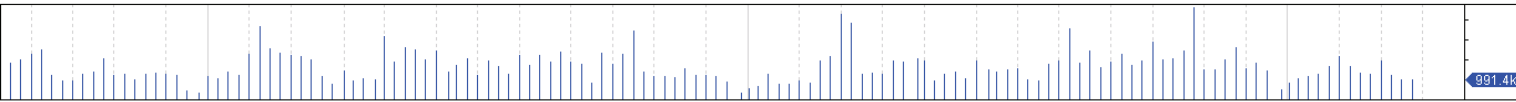
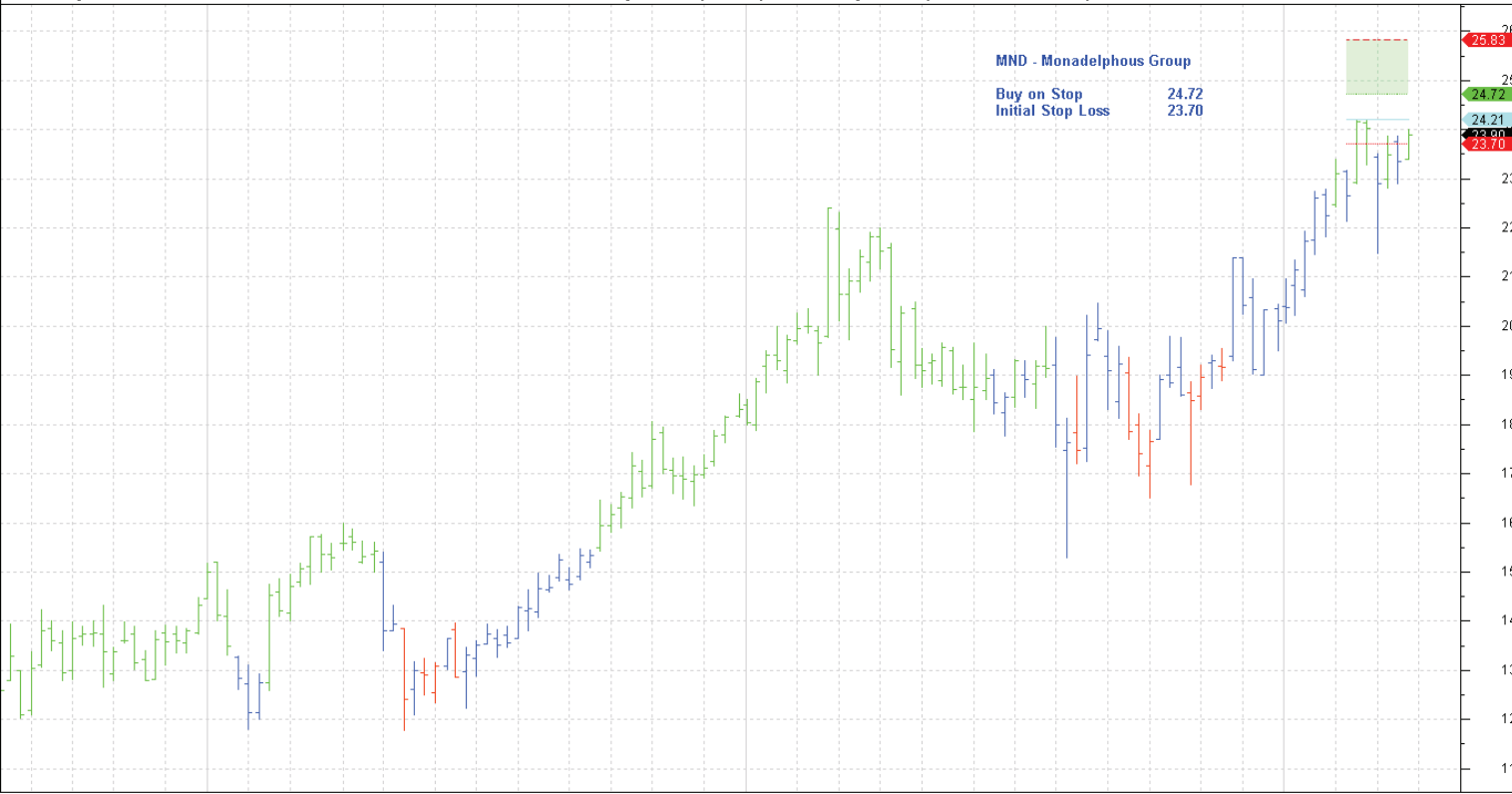
MGX Weekly CI=1.12000 O=1.15000 H=1.17500 L=1.11000 -0.03000 -2.61% MGX Weekly LW-DIPC(1.5,5,34) MGX Weekly LW-MCS(19-12-2011,1.12,5,C,C) Ma=0.99900 Mi=1.07800 S=1.12000 I=1.16200 30-03-2012



g Sep Oct Nov Dec Jan Feb Mar Apr May Jun Jul Aug Sep Oct Nov Dec Jan Feb Mar Apr 2009 2010 2011 2012

© BullSystems www.bullsystems.com

MND Weekly CI=23.90000 O=23.40000 H=24.01000 L=23.40000 +0.55000 +2.36% MND Weekly LW-DIPC(1.5,5,34) MND Weekly LW-MCL(06-02-2012,24.21,5,C,C) Ma=25.83000 Mi=24.72000 R=24.21000 I=23.71 30-03-2012



g	Sep	Oct	Nov	Dec	Jan	Feb	Mar	Apr	May	Jun	Jul	Aug	Sep	Oct	Nov	Dec	Jan	Feb	Mar	Apr	May	Jun	Jul	Aug	Sep	Oct	Nov	Dec	Jan	Feb	Mar	Apr
2009																																