

Week Ending 20th July 2012

There are 3 new potential opportunities for the coming week.

Have a great week all

Australian Stock Exchange: - Currency – AUD\$

Entries: Atlas Iron

Exits:

The colour coding we are currently using is as follows:

Amended orders or stops

Retained Orders or stops – no change

New working orders

Immediate action required

Short Sell

Open Positions

Stops: Old Action New

Amended

| | | | | |
|--------------------|-----|--------|-------|-------|
| Iluka Resources | ILU | 12.172 | Amend | 10.89 |
| Leighton Holdings | LEI | 17.78 | Amend | 17.08 |
| Ramsay Health Care | RHC | 21.36 | Amend | 22.02 |
| Seven West Media | SWM | 2.026 | Amend | 1.903 |

Retained

| | | | | |
|-------------------|-----|-------|--------|-------|
| Ampella Mining | AMX | 0.833 | Retain | 0.833 |
| Aquila Resources | AQA | 3.549 | Retain | 3.549 |
| Aquarius Platinum | AQP | 1.084 | Retain | 1.084 |
| Atlas Iron | AGO | 2.114 | Retain | 2.114 |
| Computershare | CPU | 7.626 | Retain | 7.626 |
| CSL Limited | CSL | 37.71 | Retain | 37.71 |
| Energy World Corp | EWC | 0.417 | Retain | 0.417 |

Working Orders

Cancelled Orders

Amended

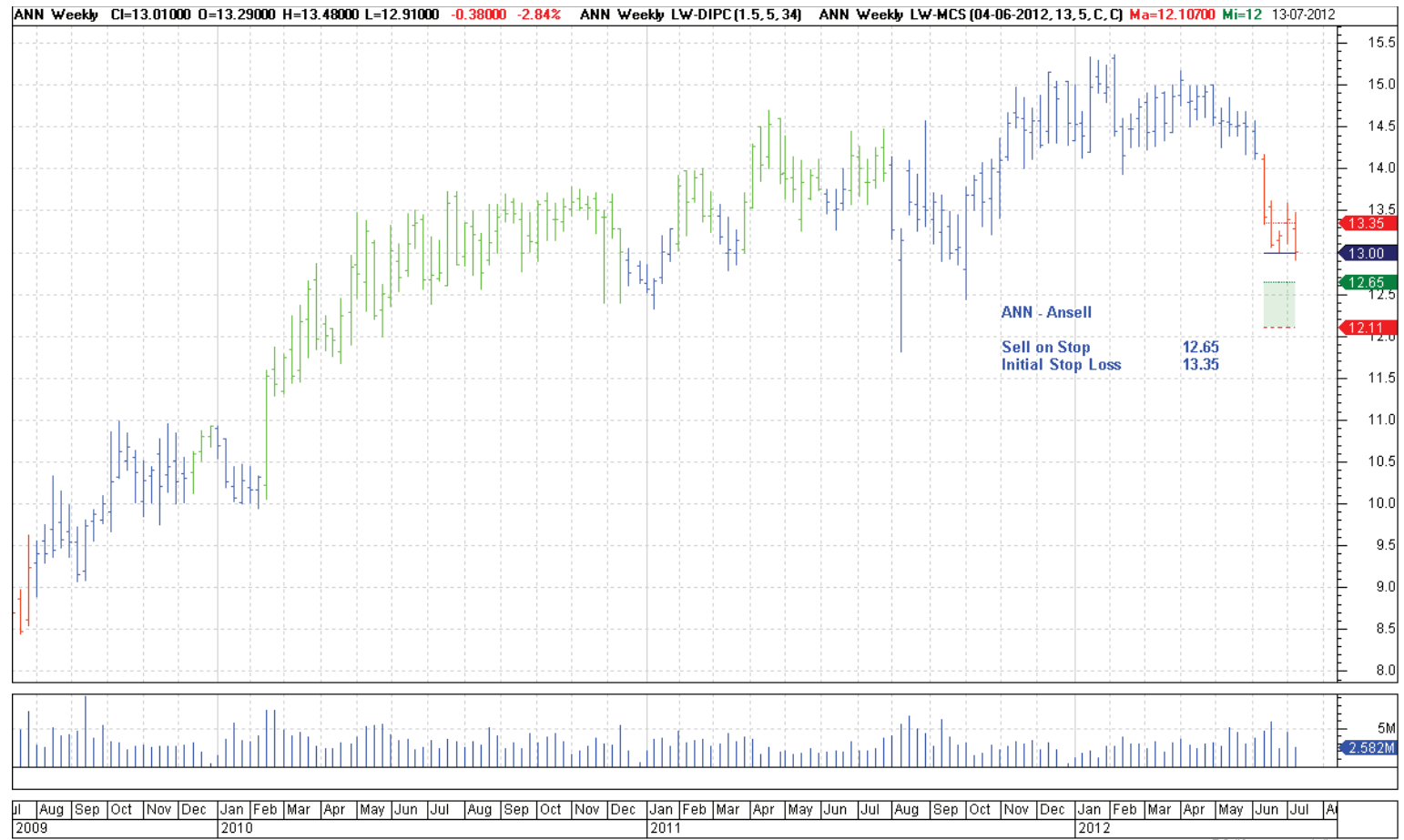
Retained

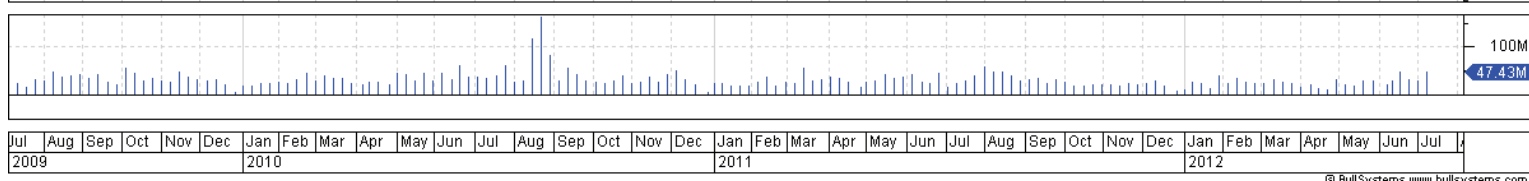
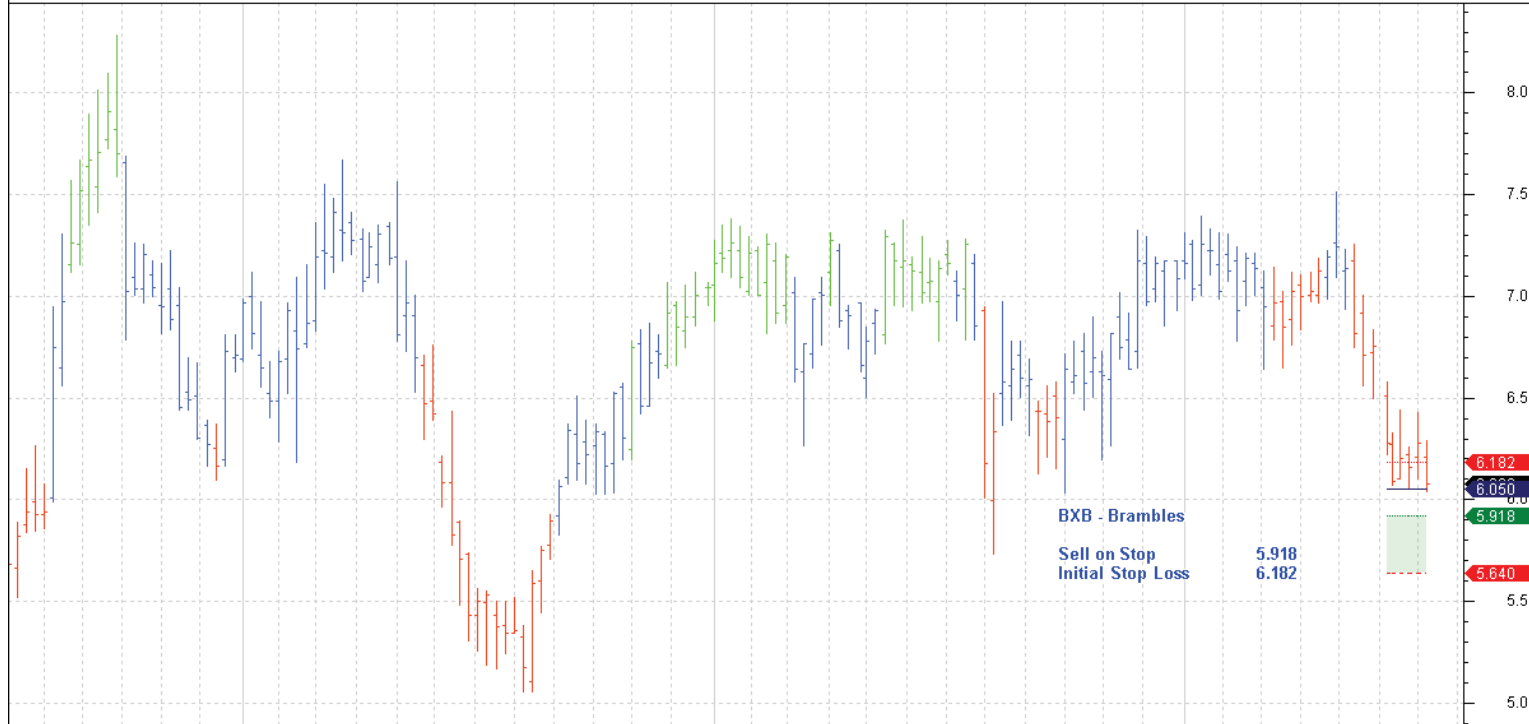
| | | | | |
|-----------------|-----|------|-------|-------|
| Macquarie Group | MQG | Sell | 24.35 | 25.95 |
| SMS Management | SMX | Sell | 4.845 | 5.125 |

New

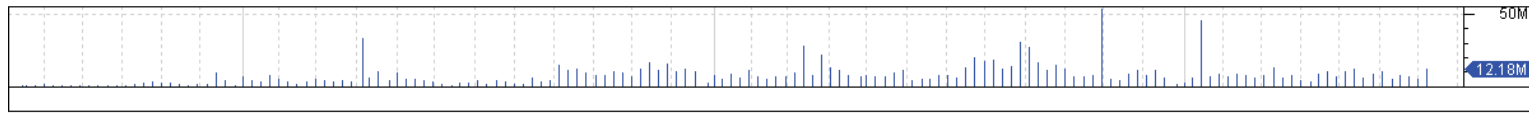
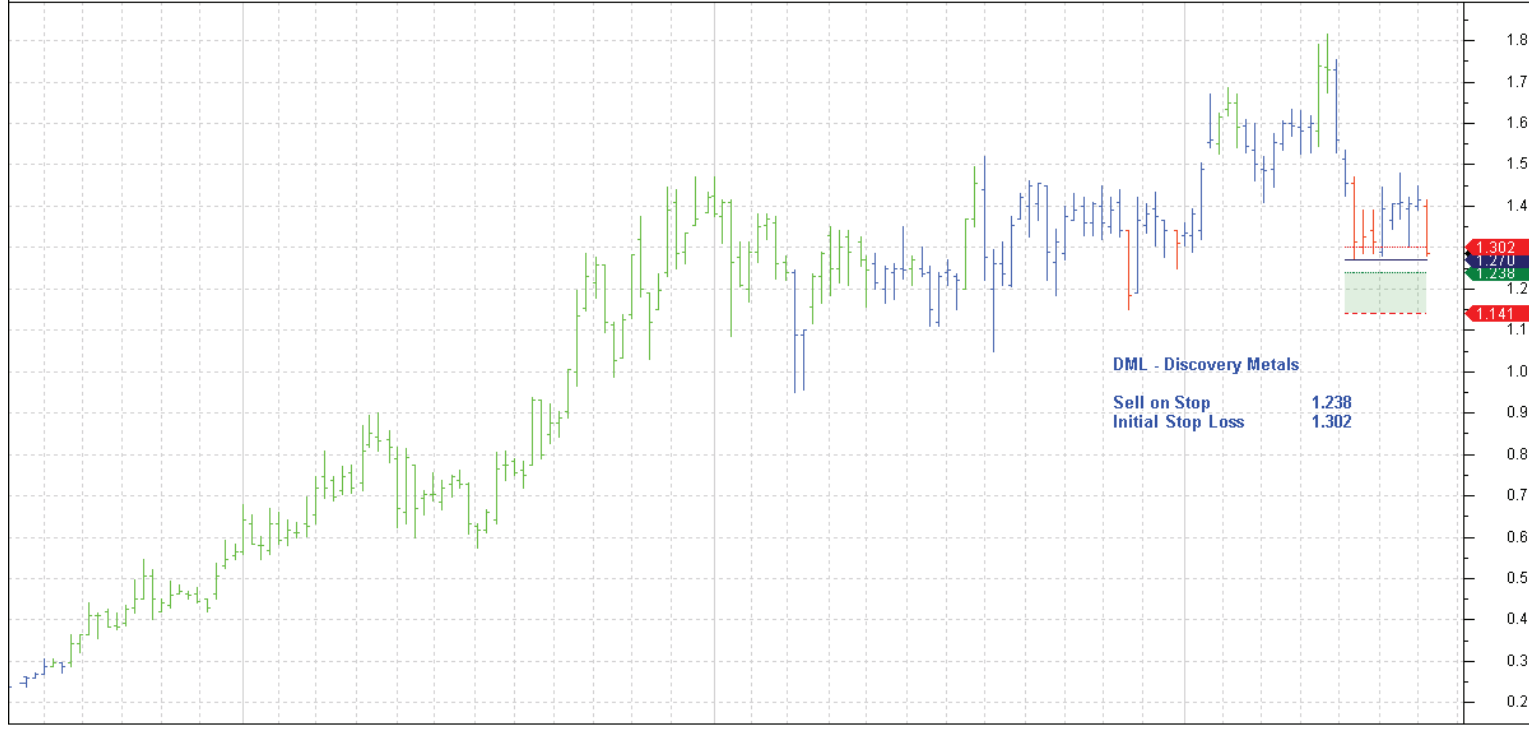
| | | | | |
|------------------|-----|------|-------|-------|
| Ansell | ANN | Sell | 12.65 | 13.35 |
| Brambles | BXB | Sell | 5.918 | 6.182 |
| Discovery Metals | DML | Sell | 1.238 | 1.302 |

Charts

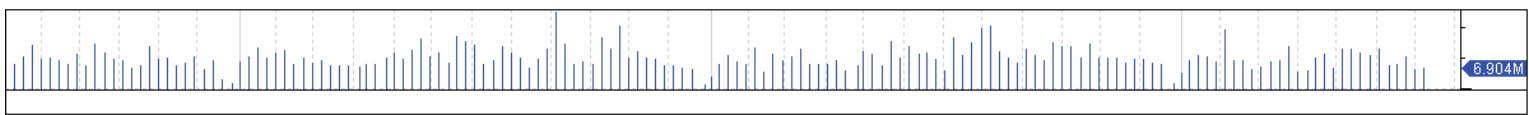




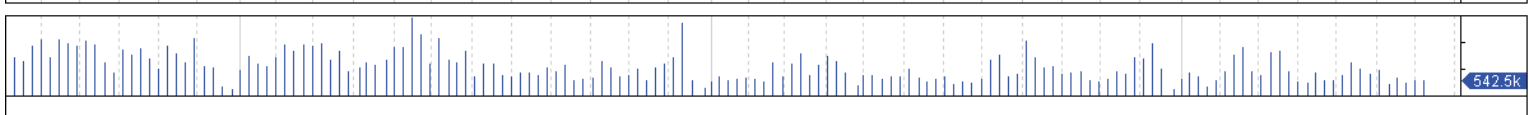
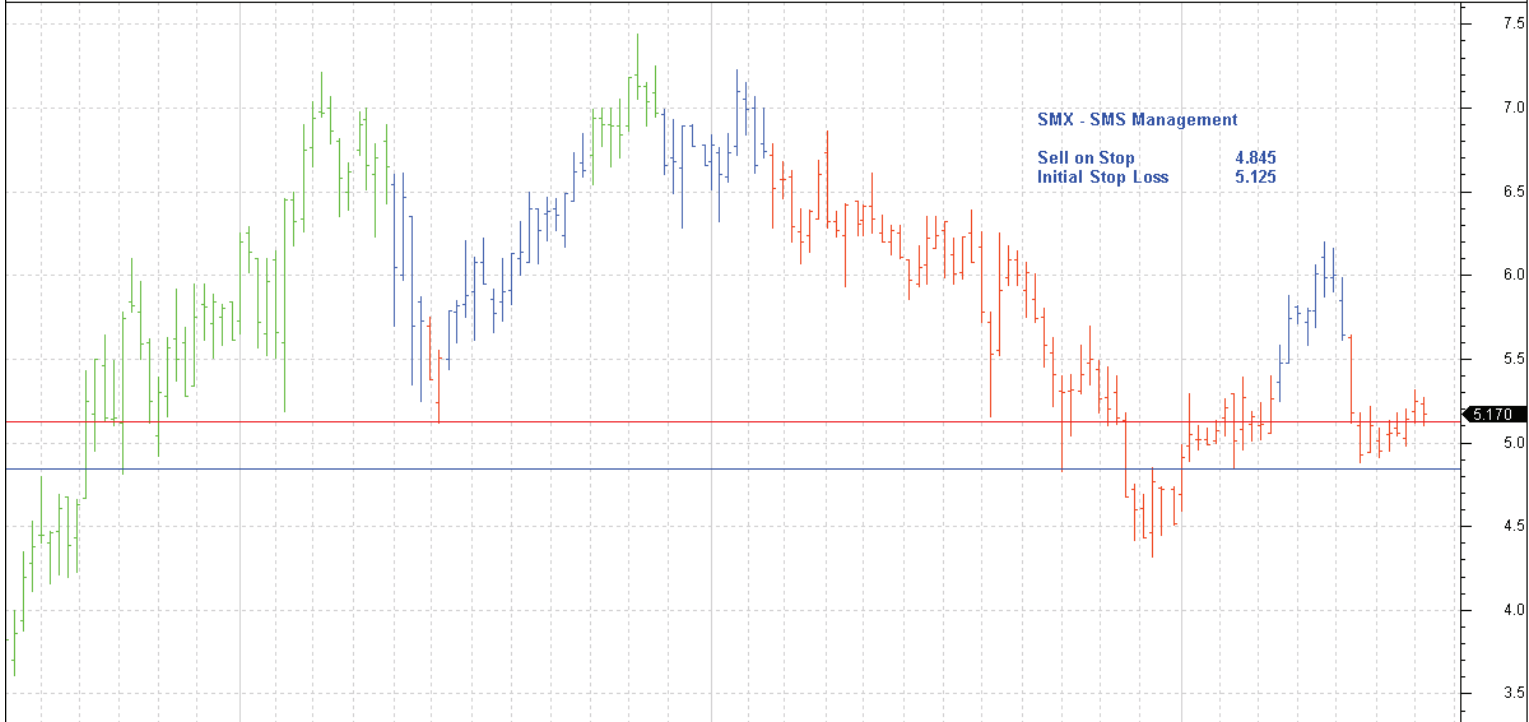
Jul Aug Sep Oct Nov Dec 2009 Jan Feb Mar Apr May Jun Jul Aug Sep Oct Nov Dec 2010 Jan Feb Mar Apr May Jun Jul Aug Sep Oct Nov Dec 2011 Jan Feb Mar Apr May Jun Jul Aug Sep Oct Nov Dec 2012



Jul Aug Sep Oct Nov Dec 2009 Jan Feb Mar Apr May Jun Jul Aug Sep Oct Nov Dec 2010 Jan Feb Mar Apr May Jun Jul Aug Sep Oct Nov Dec 2011 Jan Feb Mar Apr May Jun Jul Aug Sep Oct Nov Dec 2012



Jul 2009 Aug Sep Oct Nov Dec 2010 Jan Feb Mar Apr May Jun Jul Aug Sep Oct Nov Dec 2011 Jan Feb Mar Apr May Jun Jul Aug Sep Oct Nov Dec 2012



Jul 2009 Aug Sep Oct Nov Dec 2010 Jan Feb Mar Apr May Jun Jul Aug Sep Oct Nov Dec 2011 Jan Feb Mar Apr May Jun Jul Aug Sep Oct Nov Dec 2012

