

Week Ending 1<sup>st</sup> June 2012

Bombay Stock Exchange is offering a couple of new opportunities at this time, we believe that with some of the major movements over the last few weeks there should be more appearing after a period of consolidation

Have a great week.

## Bombay Stock Exchange:

### Currency – Indian Rupee

Entries: Mahindra & Mahindra Financial Services

Exits:

The colour coding we are currently using is as follows:

Amended orders or stops

Retained Orders or stops – no change

New working orders

Immediate action required

Short Sell

### Open Positions

---

Stops: Old Action New

### Amended

### Retained

Mahindra & Mahindra	532720	664.8	Retain	664.8
---------------------	--------	-------	--------	-------

### Cancelled Orders

KIC Metaliks

### Working Orders

Commodity Code Direction Entry Stop

# Amended

Nil

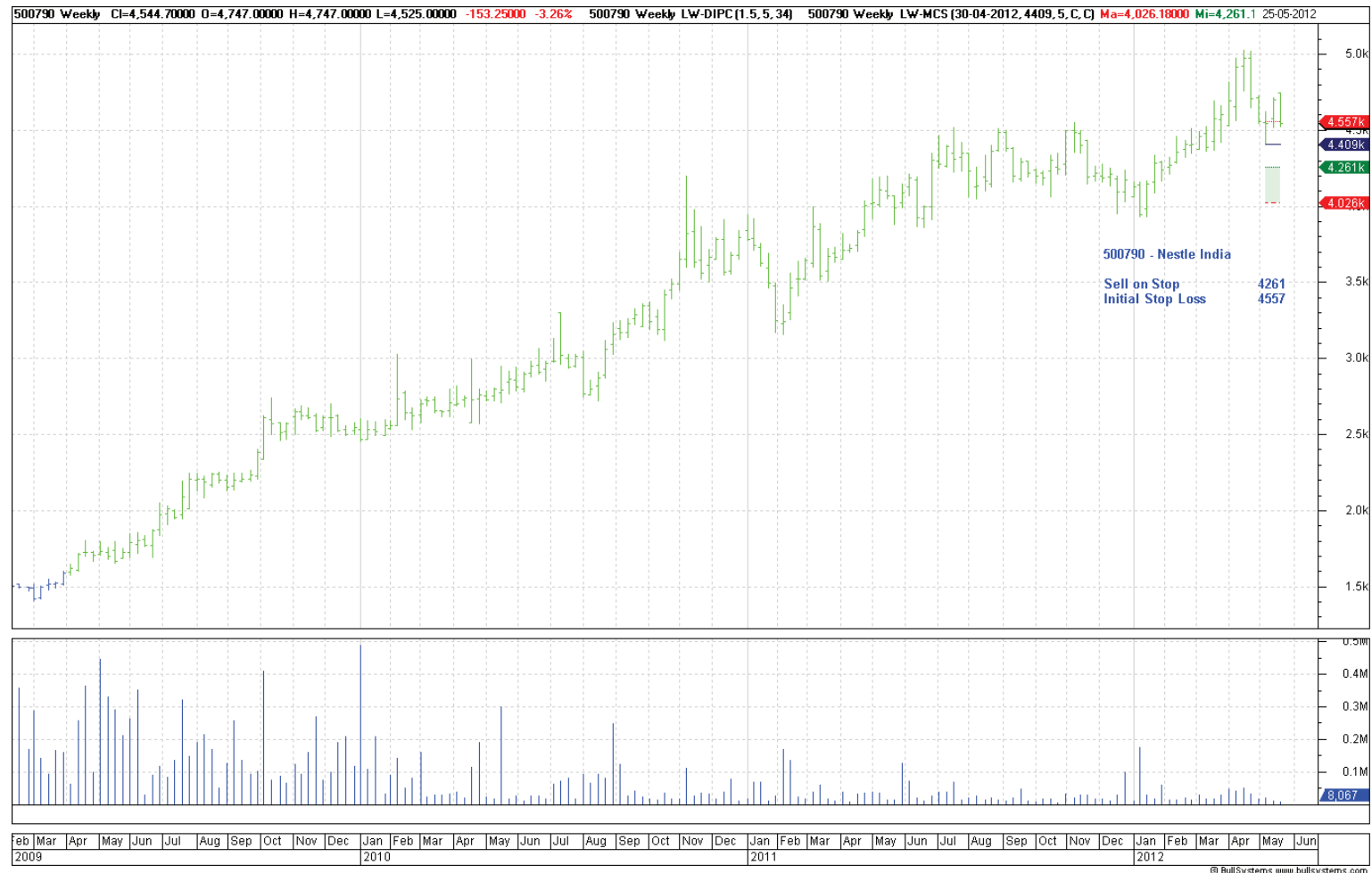
# Retained

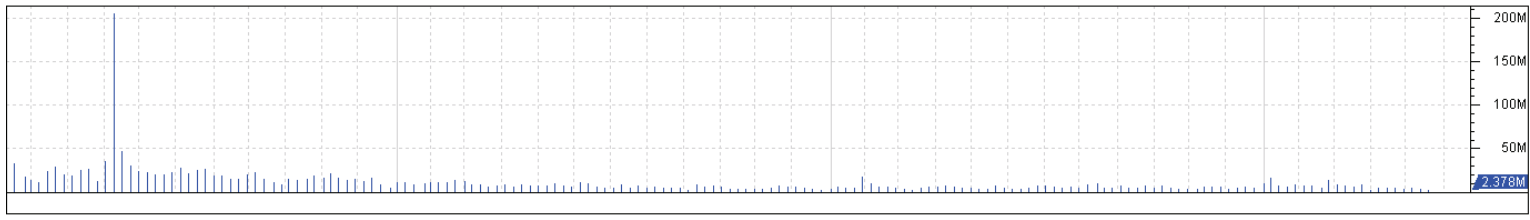
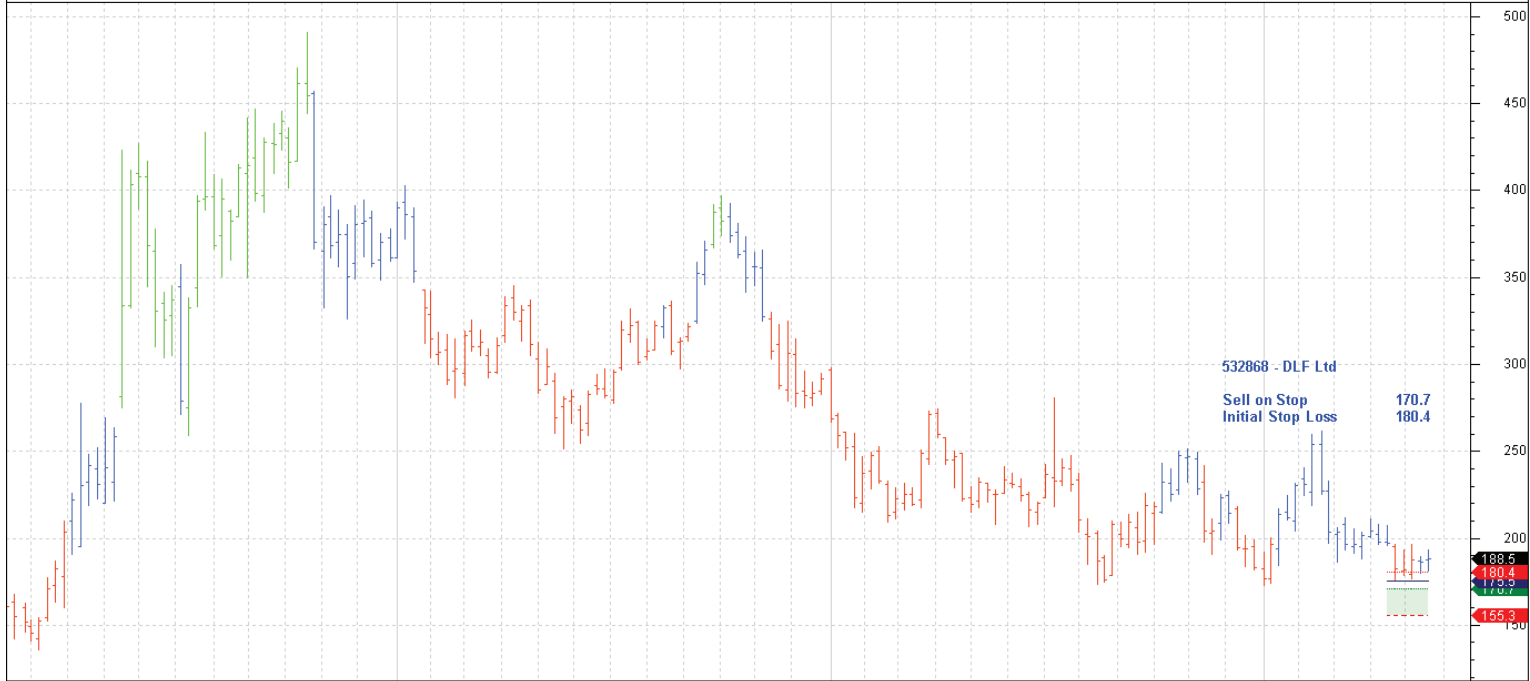
Nil

# New

Nestle India Ltd	500790	Sell	4261	4557
DLF Ltd	532368	Sell	170.7	180.4

# Charts





Feb	Mar	Apr	May	Jun	Jul	Aug	Sep	Oct	Nov	Dec	Jan	Feb	Mar	Apr	May	Jun	Jul	Aug	Sep	Oct	Nov	Dec	Jan	Feb	Mar	Apr	May	Jun		
2009											2010													2011						2012