

## Week Ending 3<sup>rd</sup> February 2012

Most markets were on the quiet side this week and BSE is no different – there does not appear to be much happening at present, there have been a number of directional changes and we probably need to see these moves settle down before we see many new possible entries.

Have a great week all

### Bombay Stock Exchange:

### Currency – Indian Rupee

Entries: Nil  
Exits: Nil

The colour coding we are currently using is as follows:

Amended orders or stops

Retained Orders or stops – no change

New working orders

Immediate action required

Short Sell

### Open Positions

---

Stops:		Old	Action	New
<b><u>Amended</u></b>				
Cipla Ltd	500087	317.28	Amend	324.3
Tata Communications	500483	207.6	Amend	210.39

### **Retained**

### Cancelled Orders

Reliance Industries

### Working Orders

Amended

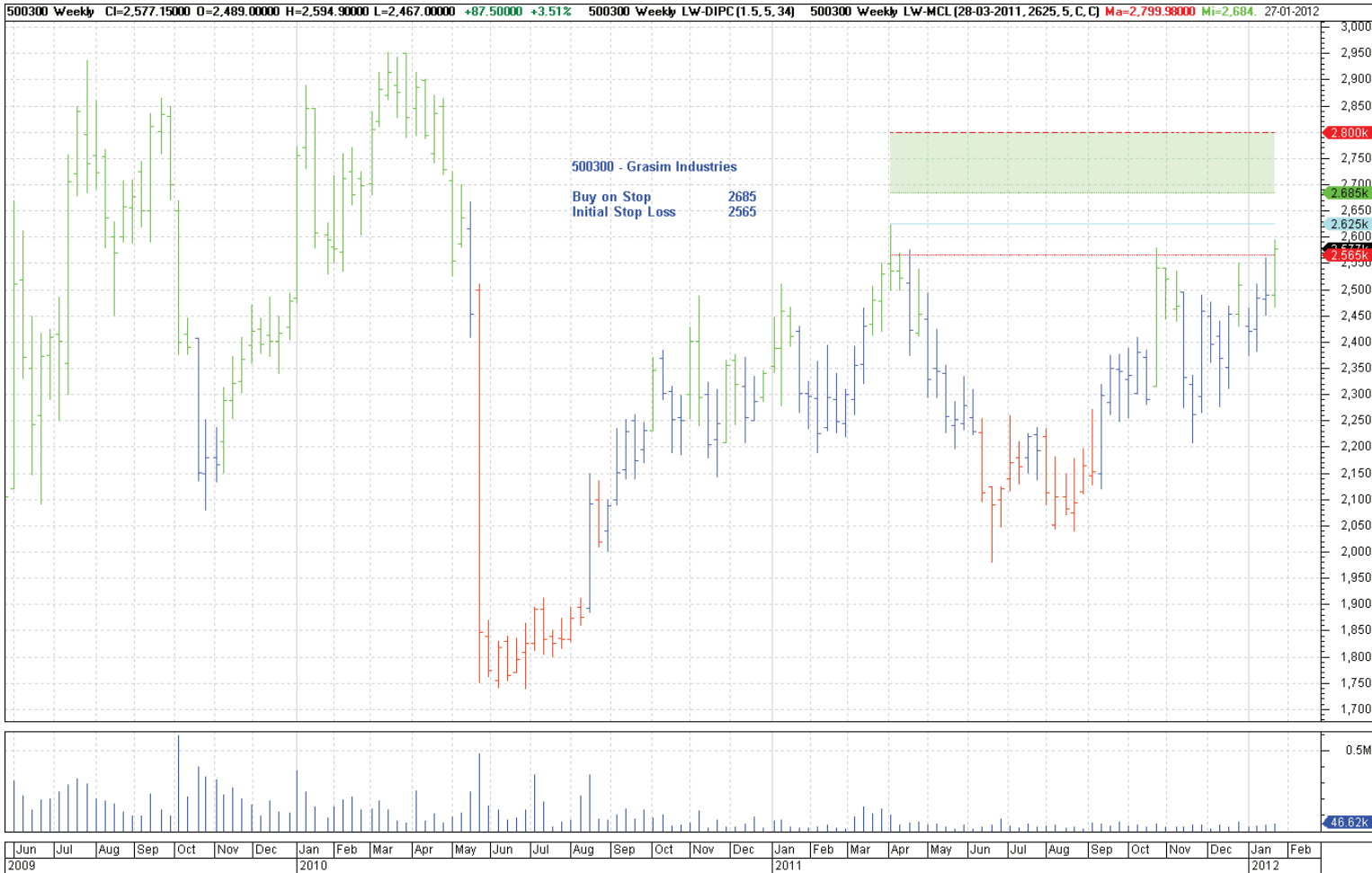
Nil

Retained

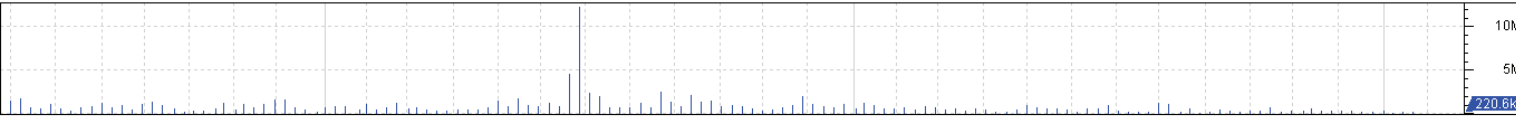
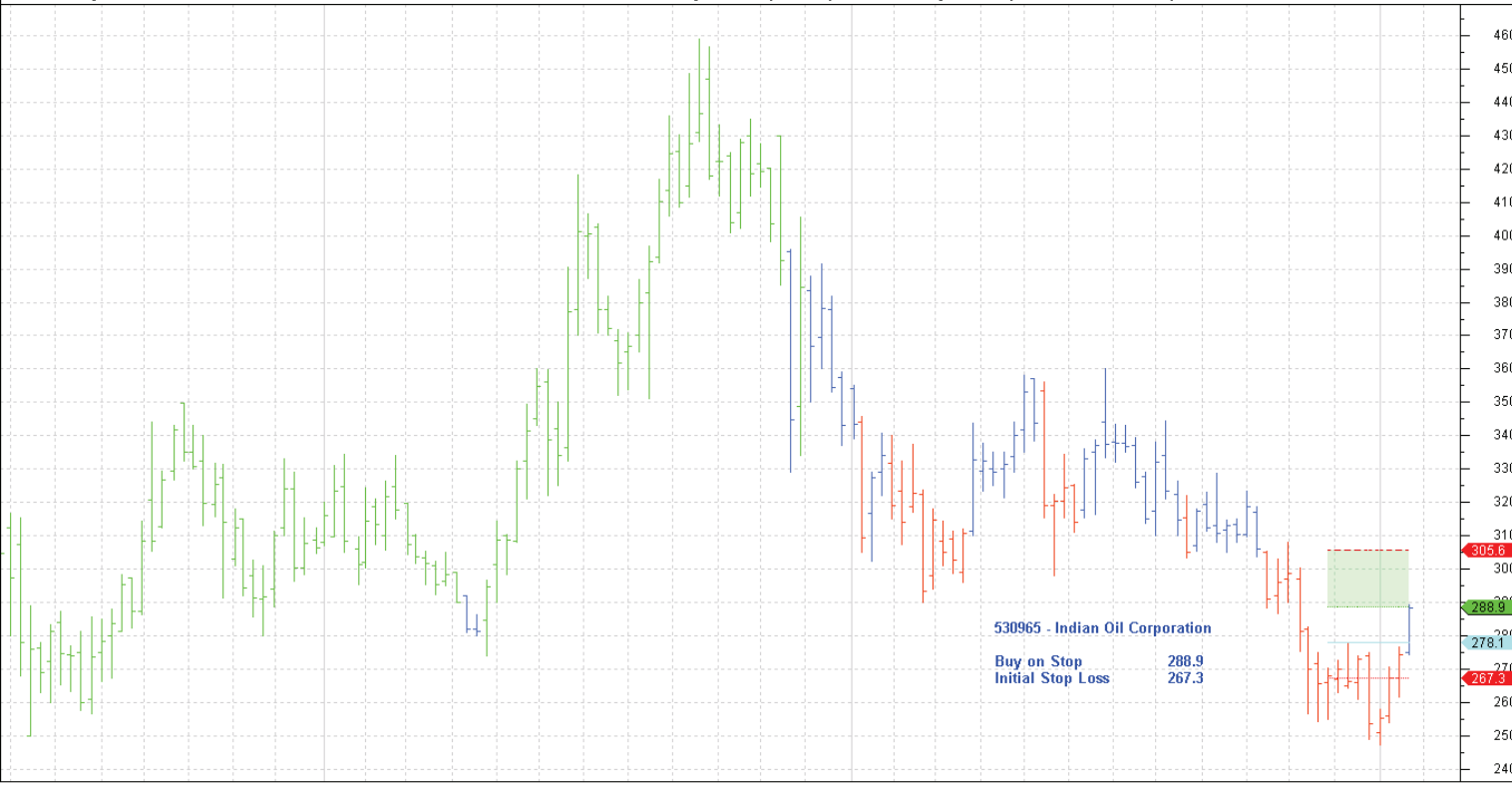
New

Grasim Industries	500300	Buy	2685	2565
Indian Oil Corporation	530965	Buy	288.9	267.3

Charts



530965 Weekly CI=288.25000 O=274.90000 H=289.50000 L=274.25000 +13.90000 +5.07% 530965 Weekly LW-DIPC(1,5,5,34) 530965 Weekly LW-MCL(21-11-2011,278.1,5,C,C) Ma=305.63000 Mi=288.88000 R= 27-01-2012



Jun	Jul	Aug	Sep	Oct	Nov	Dec	Jan	Feb	Mar	Apr	May	Jun	Jul	Aug	Sep	Oct	Nov	Dec	Jan	Feb	Mar	Apr	May	Jun	Jul	Aug	Sep	Oct	Nov	Dec	Jan	Feb
2009							2010												2011												2012	