

Week Ending 8th June 2012

All markets had a tumultuous week and are indicating a complete lack of real direction overall, however a number of new opportunities have shown themselves for the week ahead.

Have a great week.

Bombay Stock Exchange:

Currency – Indian Rupee

Entries:

Exits:

The colour coding we are currently using is as follows:

Amended orders or stops

Retained Orders or stops – no change

New working orders

Immediate action required

Short Sell

Open Positions

Stops:	Old	Action	New
--------	-----	--------	-----

Amended

Retained

Mahindra & Mahindra	532720	664.8	Retain	664.8
---------------------	--------	-------	--------	-------

Cancelled Orders

Nestle India Ltd

Working Orders

Commodity	Code	Direction	Entry	Stop
-----------	------	-----------	-------	------

Amended

DLF Ltd	532368	Sell	164	182.8
---------	--------	------	-----	-------

Retained

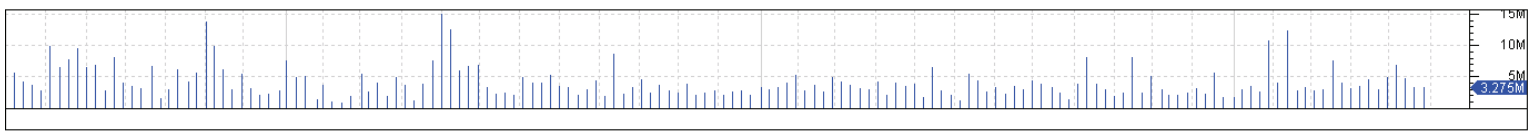
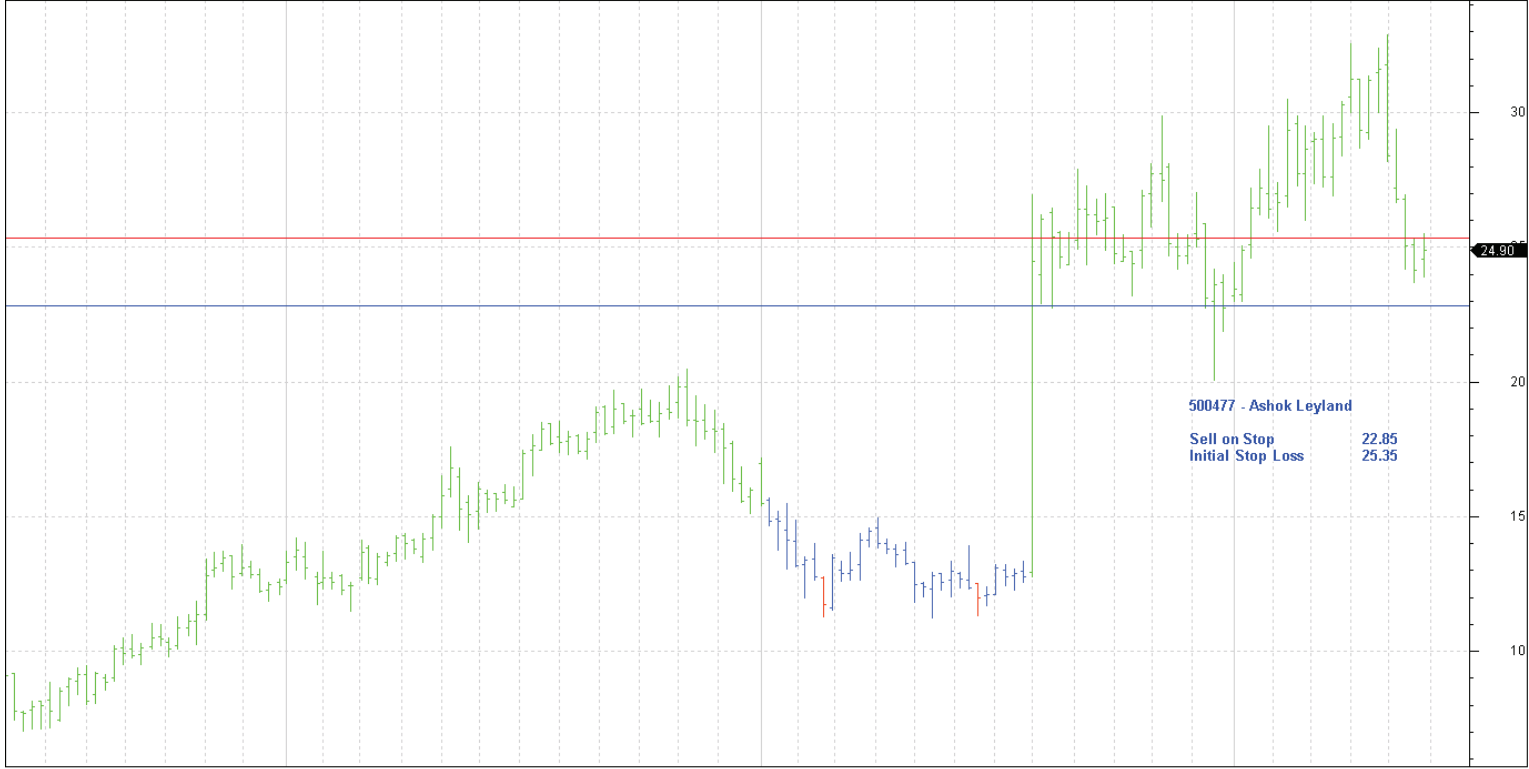
Nil

New

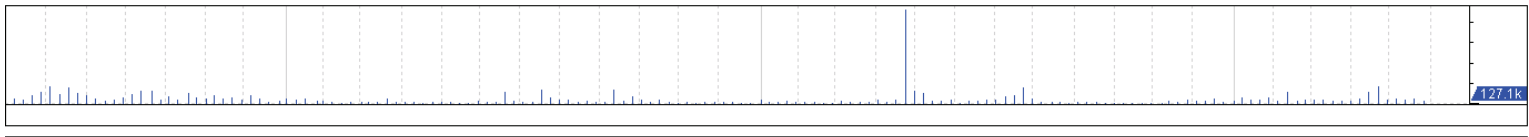
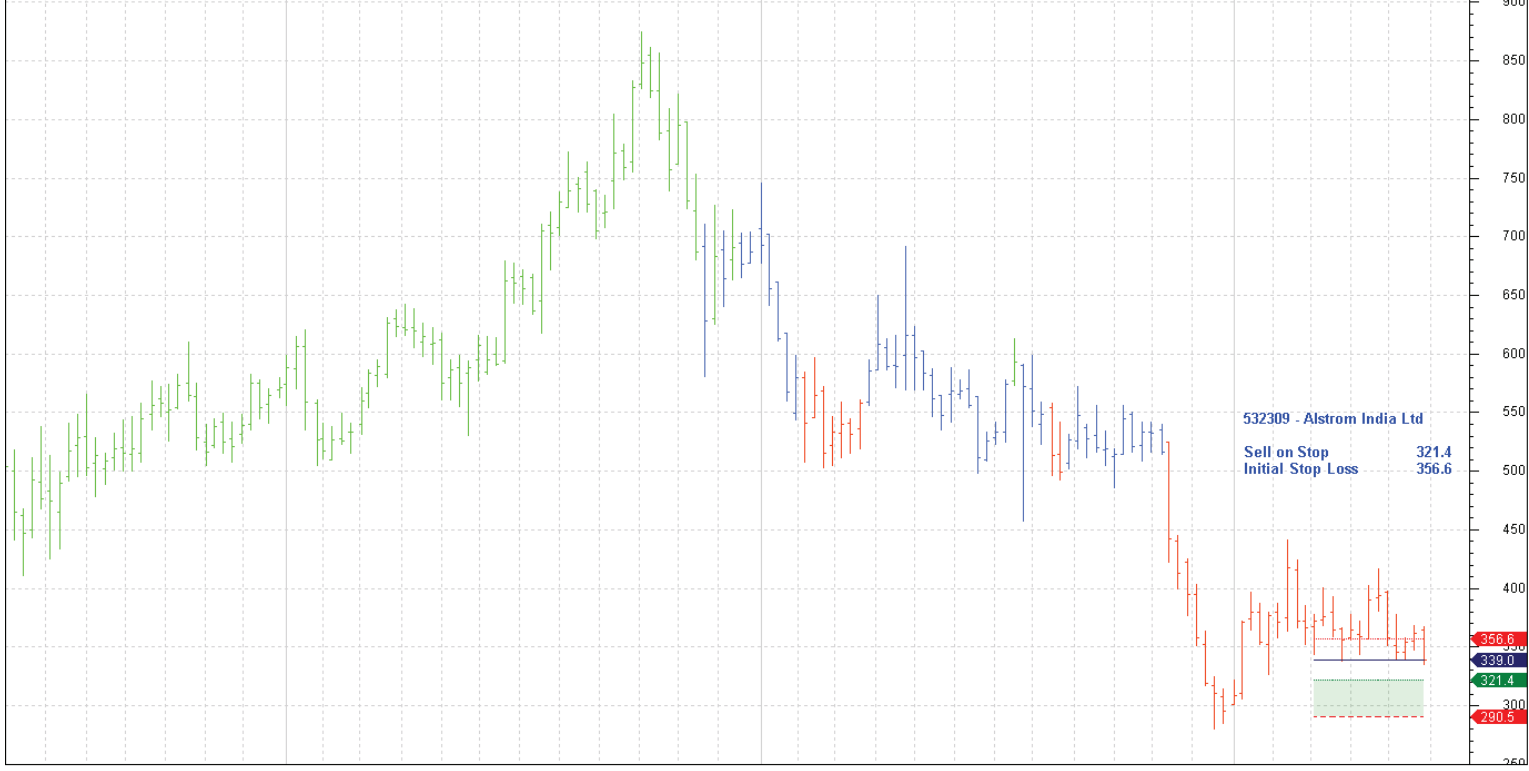
IFCI Ltd	500106	Sell	31.22	34.68
Ashok Leyland	500477	Sell	22.85	25.35
Alstrom India	532309	Sell	321.4	356.6

Charts

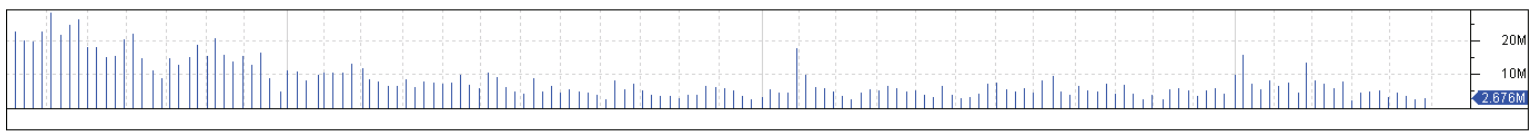
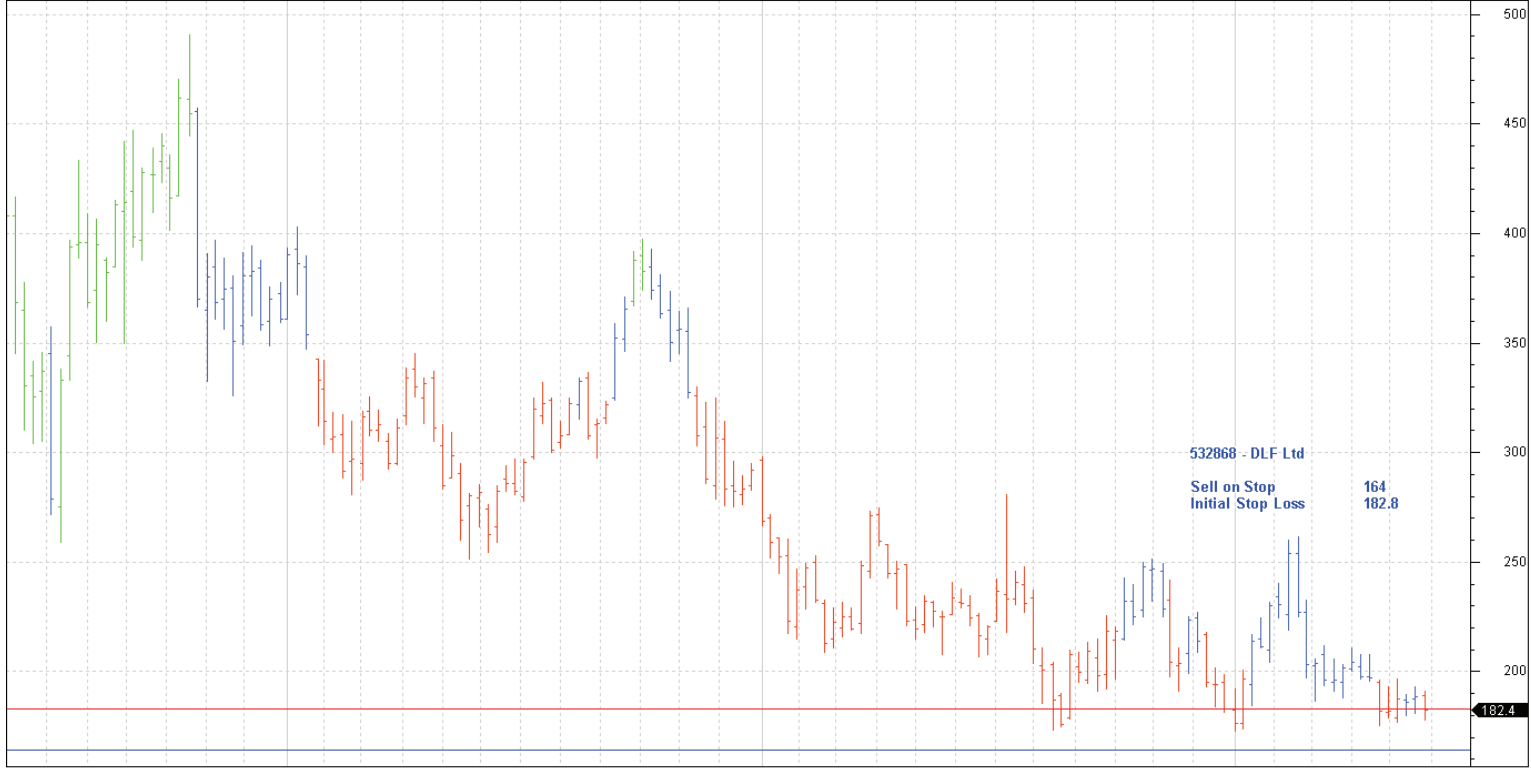




Jun 2009	Jul	Aug	Sep	Oct	Nov	Dec	Jan 2010	Feb	Mar	Apr	May	Jun	Jul	Aug	Sep	Oct	Nov	Dec	Jan 2011	Feb	Mar	Apr	May	Jun	Jul	Aug	Sep	Oct	Nov	Dec	Jan 2012	Feb	Mar	Apr	May	Jun
----------	-----	-----	-----	-----	-----	-----	----------	-----	-----	-----	-----	-----	-----	-----	-----	-----	-----	-----	----------	-----	-----	-----	-----	-----	-----	-----	-----	-----	-----	-----	----------	-----	-----	-----	-----	-----



Jun 2009	Jul	Aug	Sep	Oct	Nov	Dec	Jan 2010	Feb	Mar	Apr	May	Jun	Jul	Aug	Sep	Oct	Nov	Dec	Jan 2011	Feb	Mar	Apr	May	Jun	Jul	Aug	Sep	Oct	Nov	Dec	Jan 2012	Feb	Mar	Apr	May	Jun
----------	-----	-----	-----	-----	-----	-----	----------	-----	-----	-----	-----	-----	-----	-----	-----	-----	-----	-----	----------	-----	-----	-----	-----	-----	-----	-----	-----	-----	-----	-----	----------	-----	-----	-----	-----	-----



Jun 2009	Jul 2009	Aug 2009	Sep 2009	Oct 2009	Nov 2009	Dec 2009	Jan 2010	Feb 2010	Mar 2010	Apr 2010	May 2010	Jun 2010	Jul 2010	Aug 2010	Sep 2010	Oct 2010	Nov 2010	Dec 2010	Jan 2011	Feb 2011	Mar 2011	Apr 2011	May 2011	Jun 2011	Jul 2011	Aug 2011	Sep 2011	Oct 2011	Nov 2011	Dec 2011	Jan 2012	Feb 2012	Mar 2012	Apr 2012	May 2012	Jun 2012
----------	----------	----------	----------	----------	----------	----------	----------	----------	----------	----------	----------	----------	----------	----------	----------	----------	----------	----------	----------	----------	----------	----------	----------	----------	----------	----------	----------	----------	----------	----------	----------	----------	----------	----------	----------	----------