

Week Ending 8th June 2012

What a big week for the futures markets last week, a lot of big moves in oil happened and it will be interesting to watch what develops over the next few weeks – there could be some good, long opportunities in oil developing in the future.

We have now placed the expiry date next to each position so it is easier to keep track of upcoming rollovers, and are highlighting the ones which need immediate attention.

Have a great week all

Futures

Currency – Euro & USD\$

Entries: Rough Rice, Swiss Franc

Exits:

The colour coding we are currently using is as follows:

Amended orders or stops

Retained Orders or stops – no change

New working orders

Immediate action required

Short Sell

Change Contract Specifications

Open Positions

Stops:	Old	Action	New	Expiry
--------	-----	--------	-----	--------

Rollovers

Amended

Rough Rice	RR	1529.4	Amend	1503	13-07-12
------------	----	--------	-------	------	----------

Retained

US Dollar Index	DX2	80.37	Retain	80.37	18-06-12
-----------------	-----	-------	--------	-------	----------

Random Length	LB2	275.4	Retain	275.4	13-07-12
---------------	-----	-------	--------	-------	----------

Swiss Franc	SF	1.05756	Retain	1.05756	18-06-12
-------------	----	---------	--------	---------	----------

Cancelled Orders

Working Orders

Amended

White Sugar #5	LSU	WQ2 – Aug '12	Sell	542.6	563.6
----------------	-----	---------------	------	-------	-------

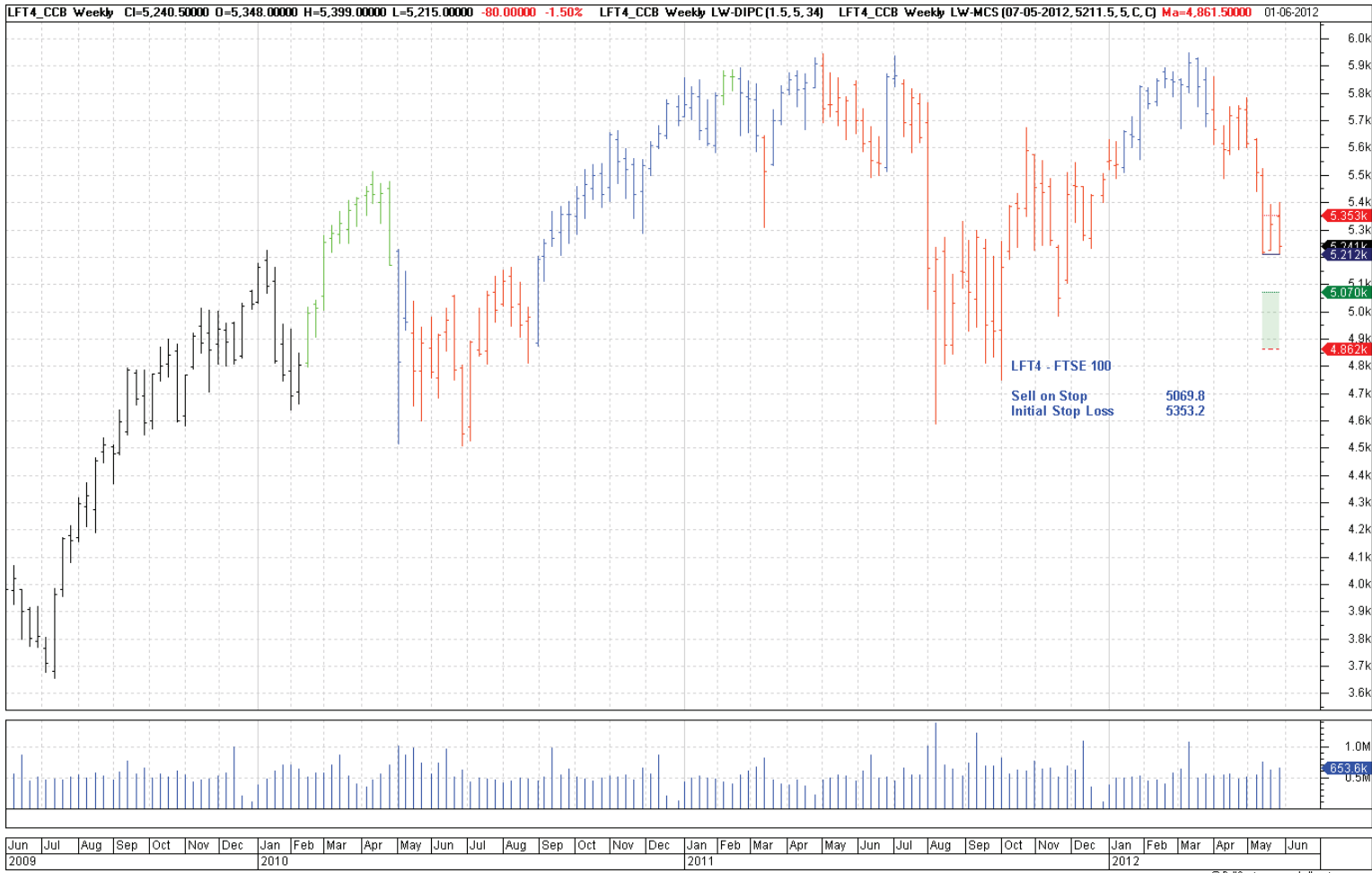
Retained

Nil

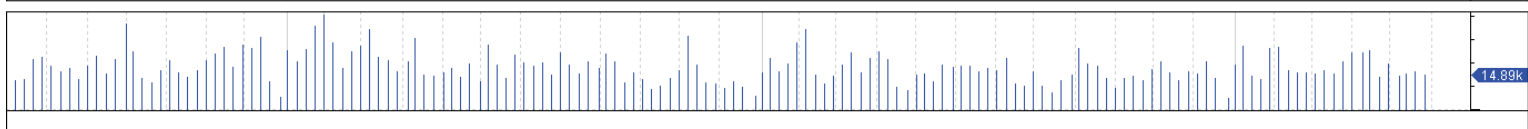
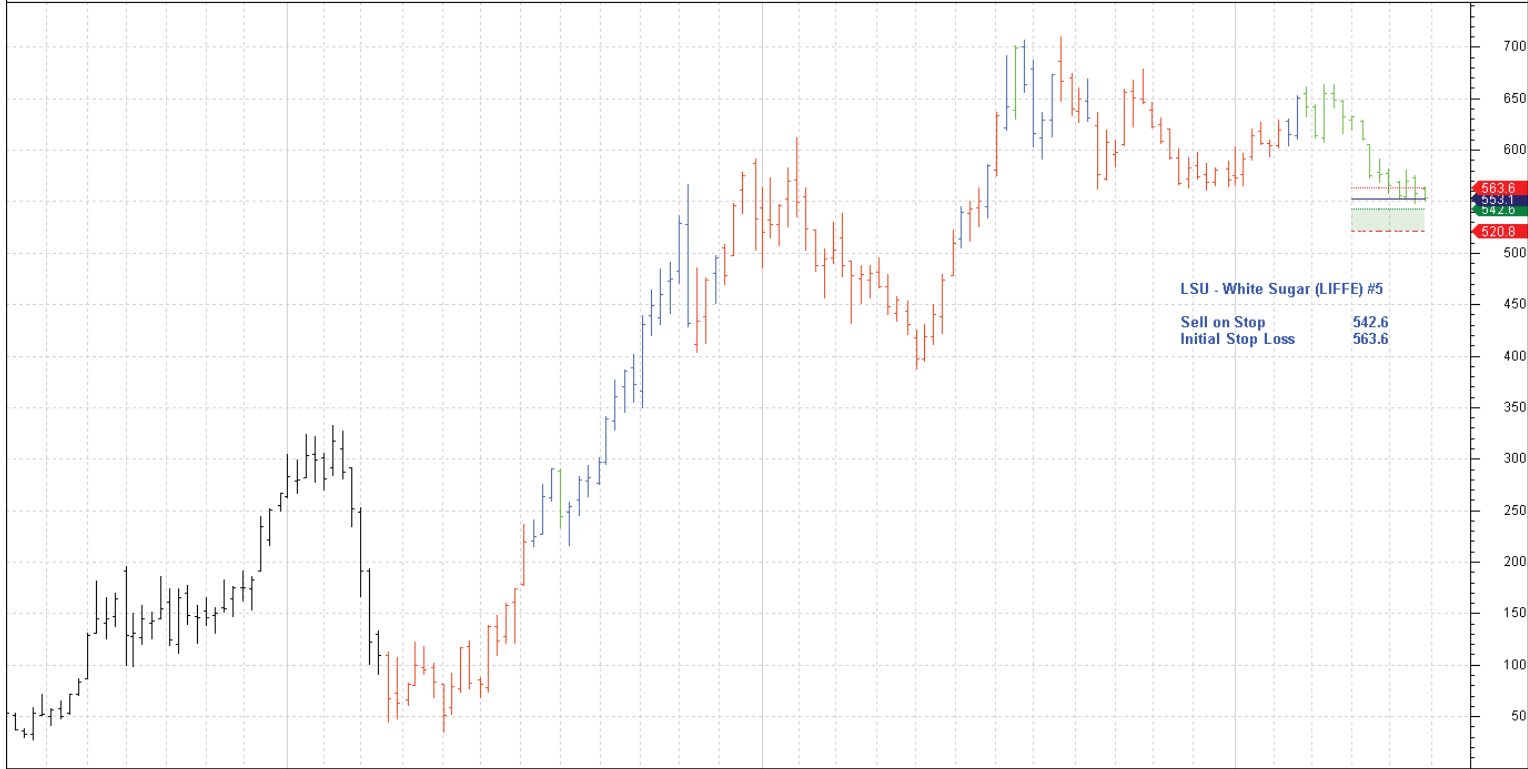
New

FTSE 100	LFT4	FFIM2 – June '12	Sell	5070	5353
Singapore Index	SSG1	SSGM2 – June '12	Sell	308.16	320.81

Charts



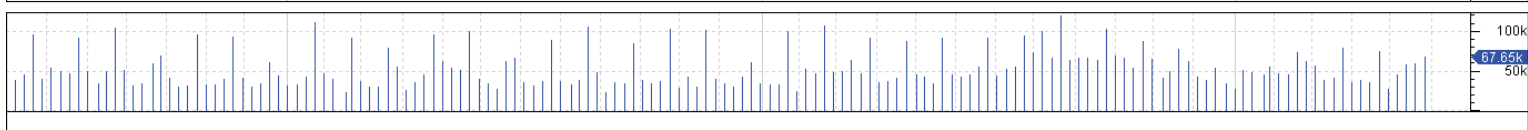
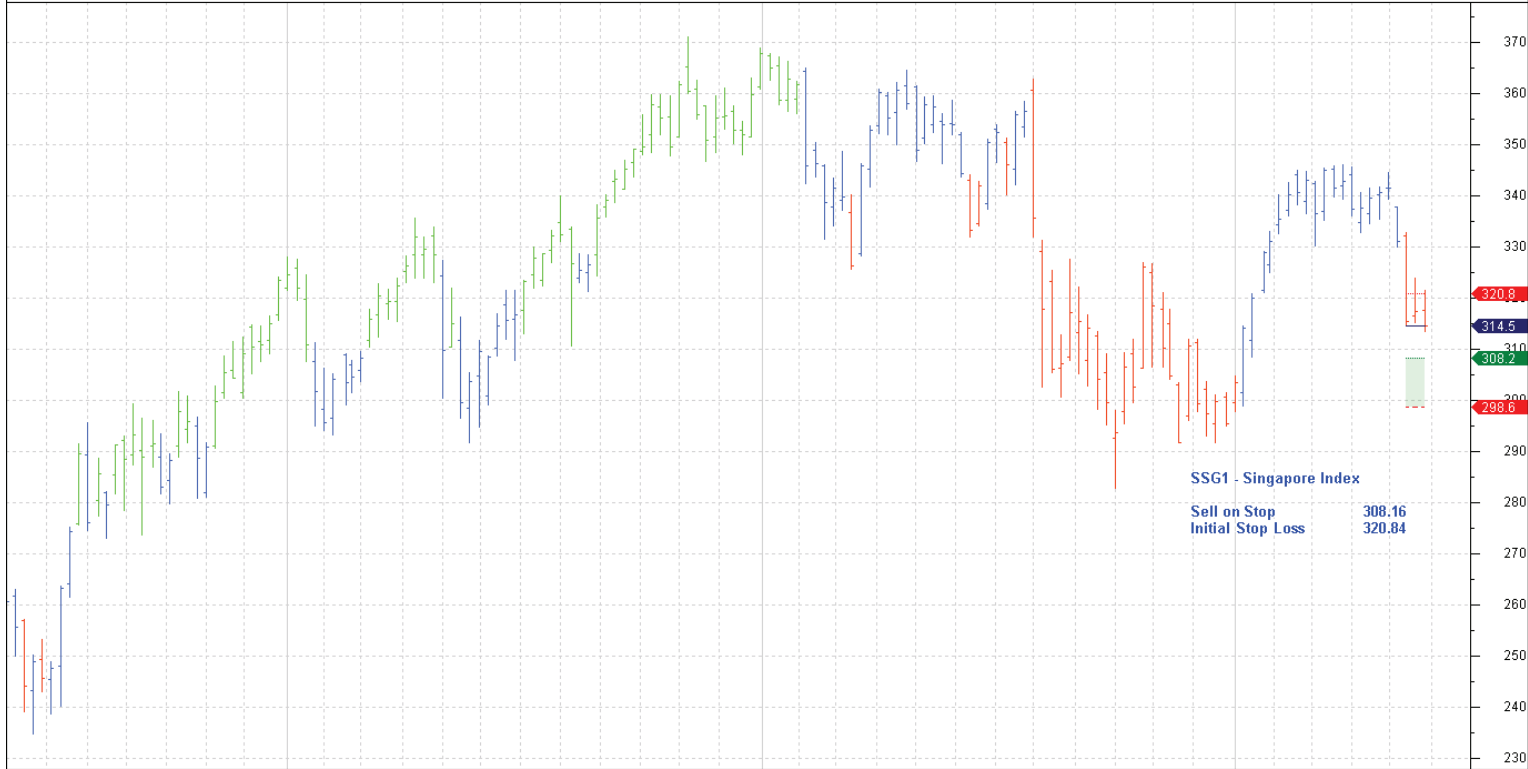
LSU_CCB Weekly CI=553.50000 O=562.50000 H=565.00000 L=550.80000 -4.20000 -0.75% LSU_CCB Weekly LW-DIPC(1.5,5,34) LSU_CCB Weekly LW-MCS(26-03-2012,553.1,5,C,C) Ma=520.82000 Mi=542.64 01-06-2012



Jun Jul Aug Sep Oct Nov Dec Jan Feb Mar Apr May Jun Jul Aug Sep Oct Nov Dec Jan Feb Mar Apr May Jun 2009 2010 2011 2012

@ BullSystems www.bullsystems.com

SSG1_CCB Weekly CI=314.50000 O=317.60000 H=321.40000 L=313.50000 -2.80000 -0.88% SSG1_CCB Weekly LW-DIPC(1.5,5,34) SSG1_CCB Weekly LW-MCS(07-05-2012,314.5,5,C,C) Ma=298.58000 Mi=308.1 01-06-2012



Jun Jul Aug Sep Oct Nov Dec Jan Feb Mar Apr May Jun Jul Aug Sep Oct Nov Dec Jan Feb Mar Apr May Jun 2009 2010 2011 2012

@ BullSystems www.bullsystems.com