

Week Ending 11th May 2012

The LSE settled down from the previous 3 weeks and is offering a number of possible opportunities for the coming week.

Have a great week

London Stock Exchange

Currency – British Pence

Entries: Rolls Royce

Exits: 3I Infrastructure, Rolls Royce

The colour coding we are currently using is as follows:

Amended orders or stops

Retained Orders or stops – no change

New working orders

Immediate action required

Short Sell

Open Positions

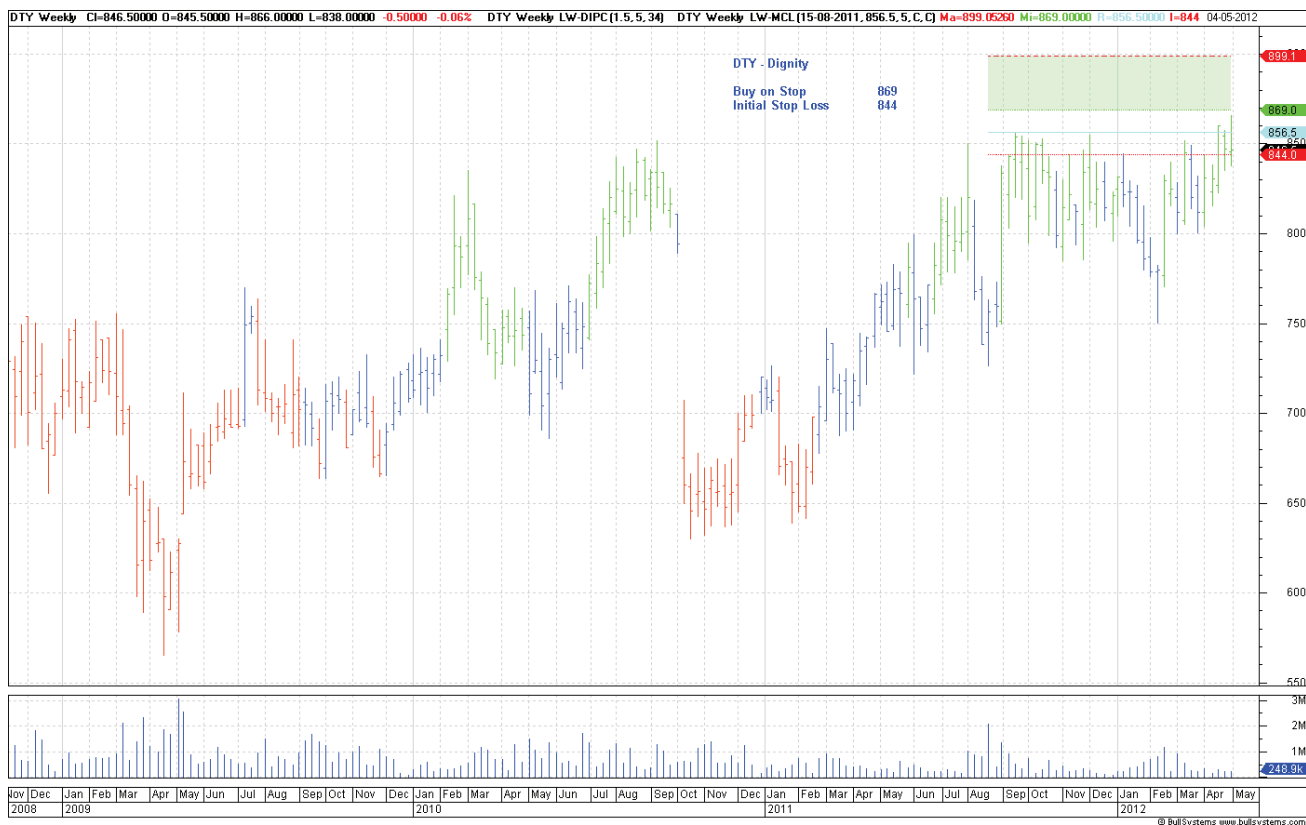
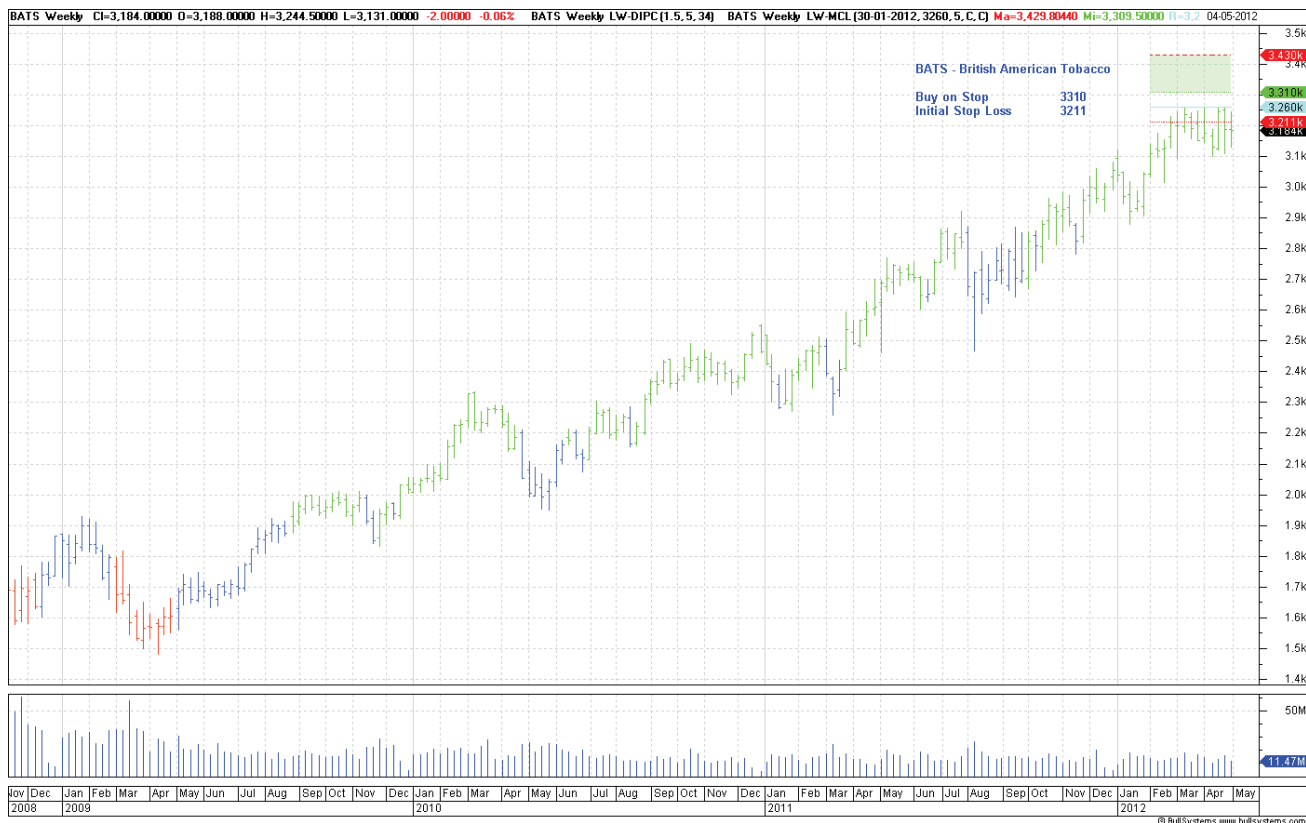
Stops:	Code	Old	Action	New
--------	------	-----	--------	-----

Amended

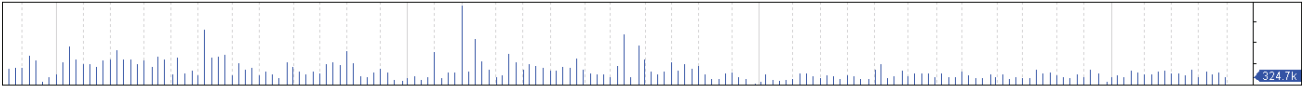
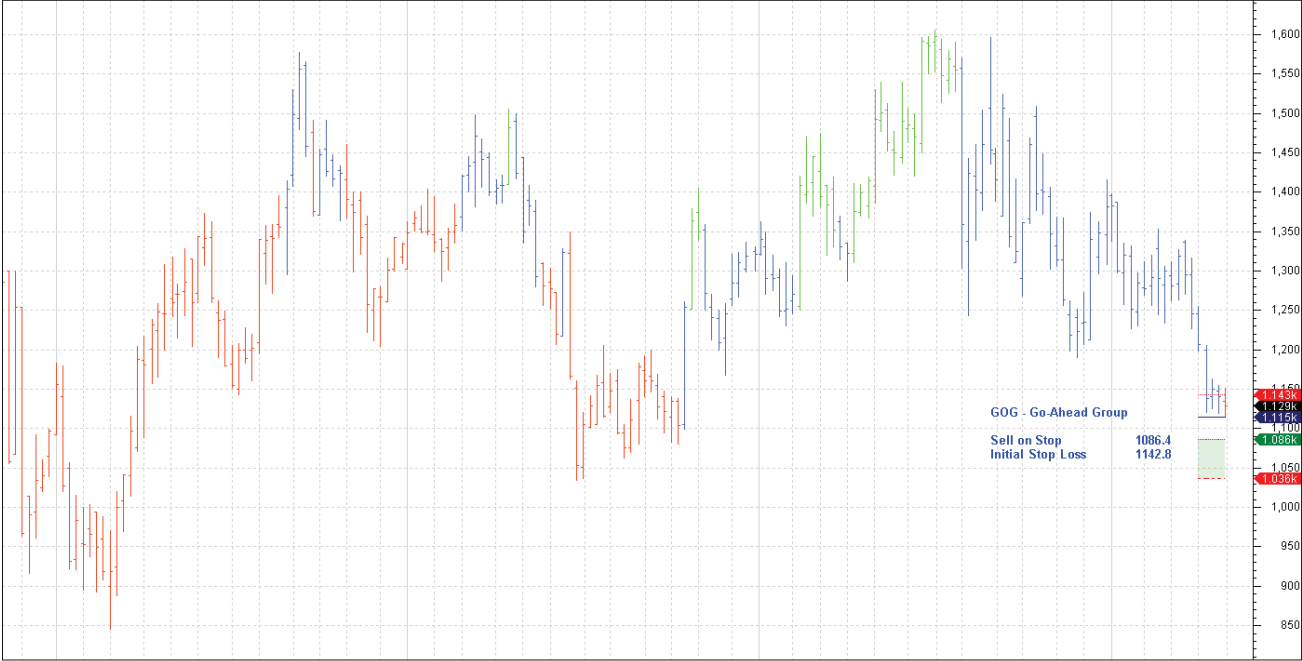
First Group	FGP	222.2	Amend	214.09
-------------	-----	-------	-------	--------

Retained

Petrofac	PFC	1639	Retain	1639
Qinetiq Group	QQ	145	Retain	145



GOG Weekly CI=1,129.00000 O=1,134.00000 H=1,151.00000 L=1,114.61500 -12.00000 -1.05% GOG Weekly LW-DIPC(1,5,5,34) GOG Weekly LW-MCS(26-03-2012,1114.615,5,C,C) Ma=1,036.18560 Mi=1,086.41500 S= 04-05-2012



Nov	Dec	Jan	Feb	Mar	Apr	May	Jun	Jul	Aug	Sep	Oct	Nov	Dec	Jan	Feb	Mar	Apr	May	Jun	Jul	Aug	Sep	Oct	Nov	Dec	Jan	Feb	Mar	Apr	May	
2008		2009												2010																	
													2011														2012				

© BullSystems www.bullsystems.com