

Week Ending 9<sup>th</sup> December, 2011

All major Stock Markets this week had a very good rebound with major gains across the board

Have a great week all

## NYSE

Entries: Philip Morris

Exits:

The colour coding we are currently using is as follows:

Amended orders or stops

Retained Orders or stops – no change

New working orders

Immediate action required

Short Sell

Currency – USD\$

## Open Positions

Stops:	Code	Old	Action	New
<b><u>Amended</u></b>				
Lowes	LOW	21.72	Amend	22.18

## **Retained**

Exxon Mobil	XOM	73.58	Retain	73.58
Philip Morris	PM	70.84	Retain	70.84
Time Warner Cable	TWC	62.93	Retain	62.93

## Cancelled Orders

First Energy, Saic Inc, McCormick & Pepco Holdings

## Working Orders

Company

Code

Direction

Entry

Stop

**Amended**

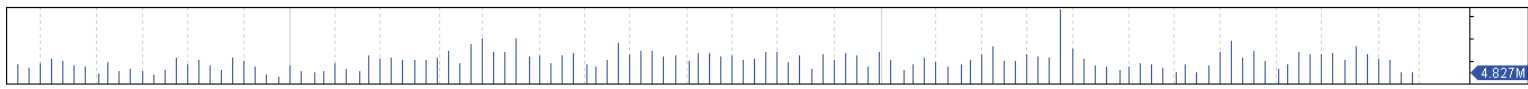
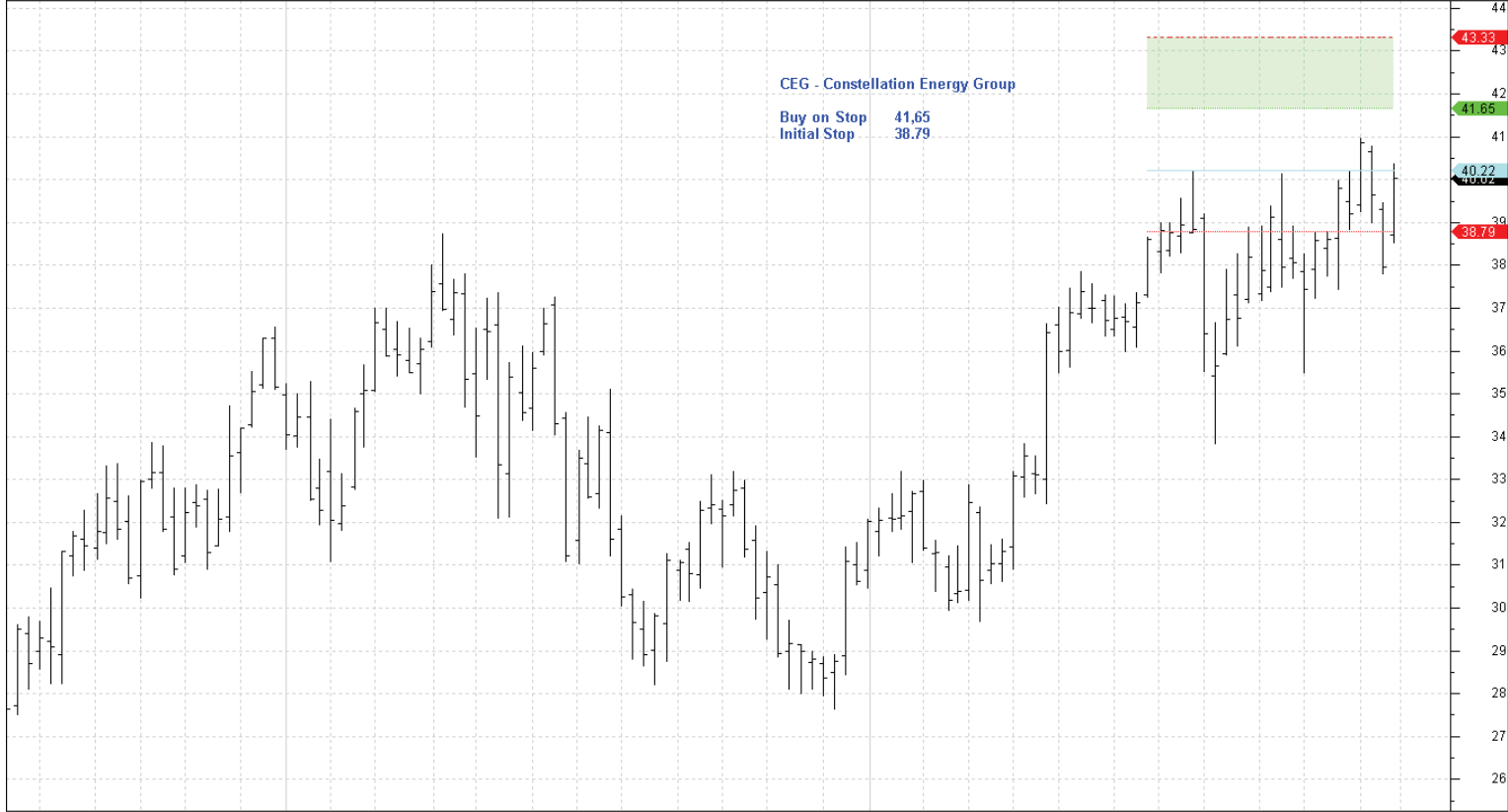
Constellation Energy	CEG	Buy	41.65	38.79
Chevron Texaco	CVX	Buy	115.6	104.4
DTE Energy	DTE	Buy	54.09	51.55
General Mills	GIS	Buy	41.12	39.38
Scana Corporation	SCG	Buy	44.29	42.09
Sherwin Williams	SHW	Buy	89.40	86.34
JM Smucker	SJM	Buy	81.13	78.38

**Retained**

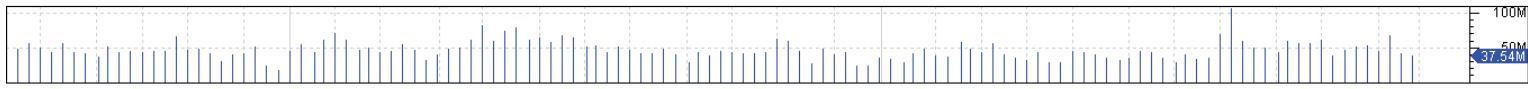
Nil

**New**

Nil

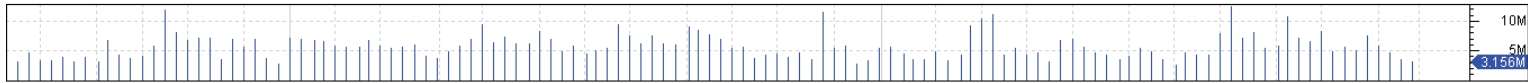
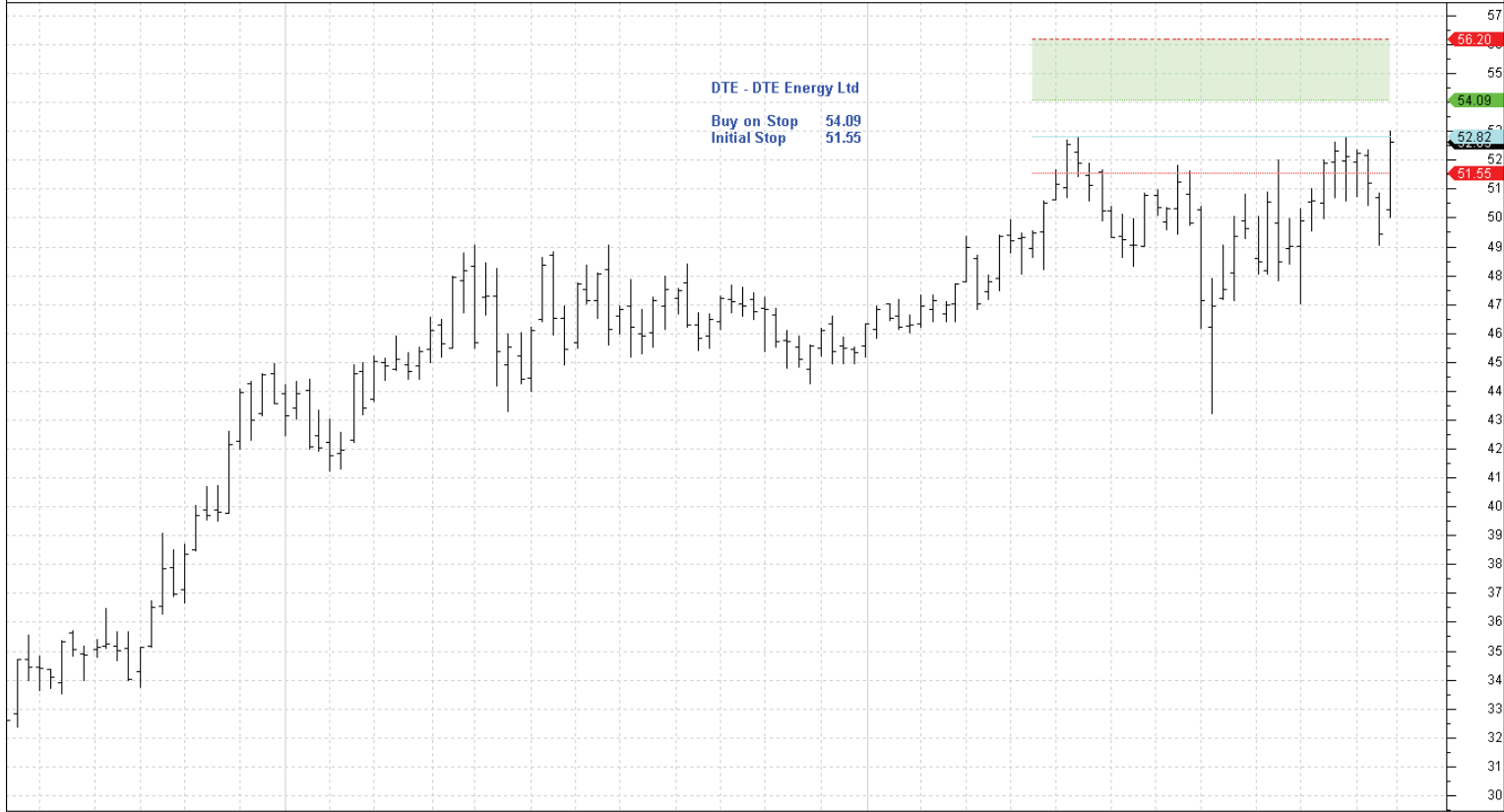


Aug Sep Oct Nov Dec 2009 Jan Feb Mar Apr May Jun Jul Aug Sep Oct Nov Dec 2010 Jan Feb Mar Apr May Jun Jul Aug Sep Oct Nov Dec 2011



Aug Sep Oct Nov Dec 2009 Jan Feb Mar Apr May Jun Jul Aug Sep Oct Nov Dec 2010 Jan Feb Mar Apr May Jun Jul Aug Sep Oct Nov Dec 2011

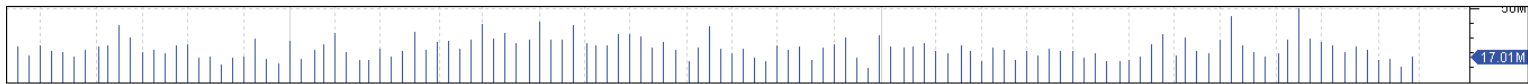
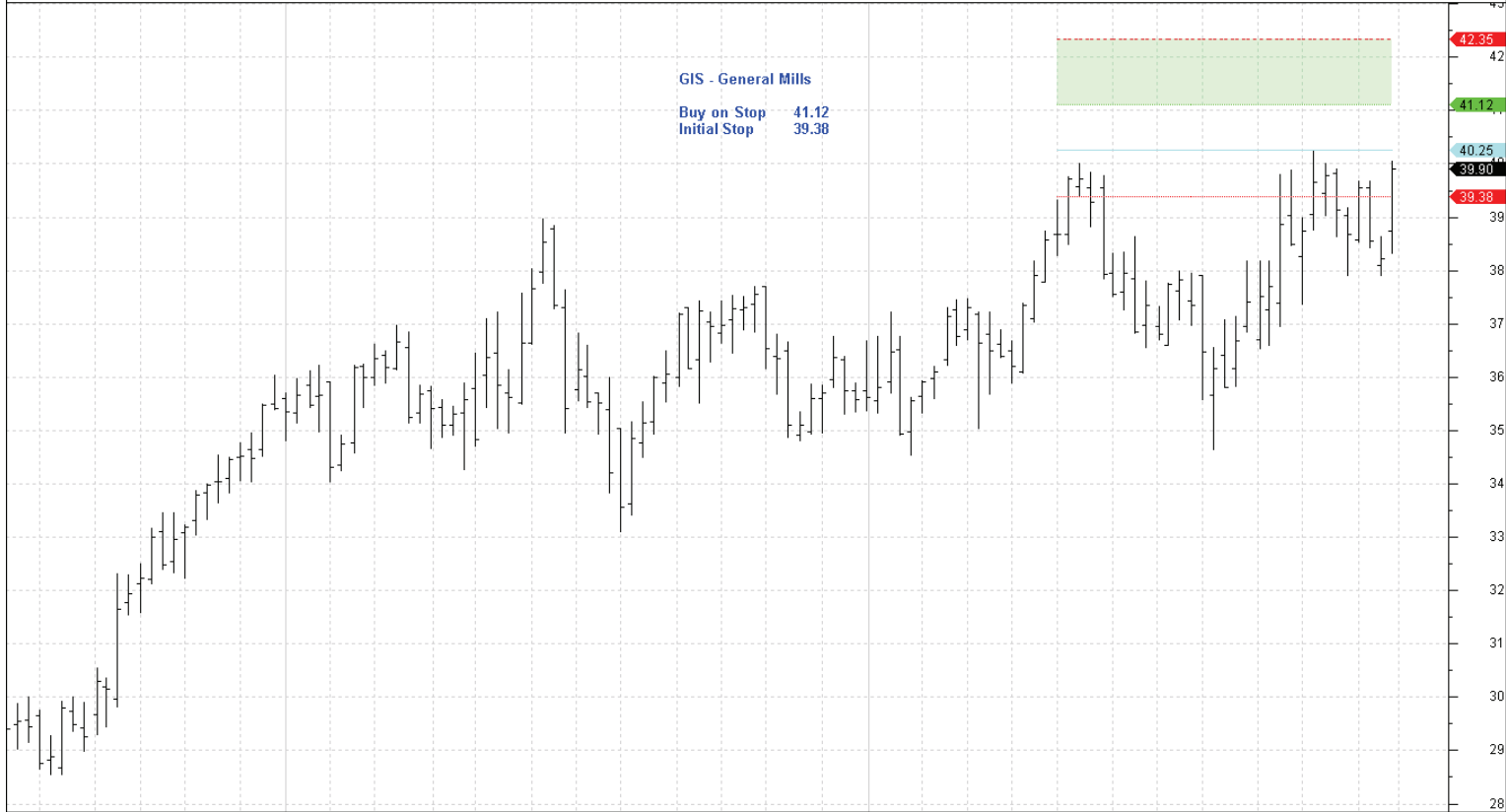
DTE Weekly CI=52.63000 O=50.30000 H=53.00000 L=50.00000 +3.20000 +6.47% DTE Weekly LW-MCL(11-04-2011,52.82,5,C,C) Ma=56.20400 Mi=54.09000 R=52.82000 I=51.55000 01-12-2011



Aug Sep Oct Nov Dec Jan Feb Mar Apr May Jun Jul Aug Sep Oct Nov Dec 2009 2010 2011

© BullSystems www.bullsystems.com

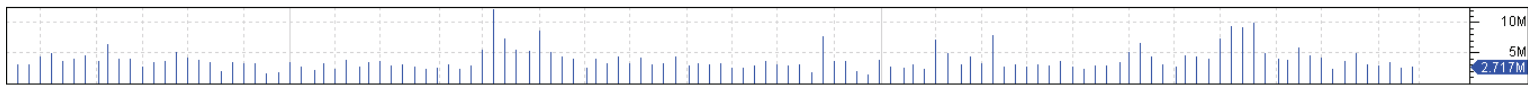
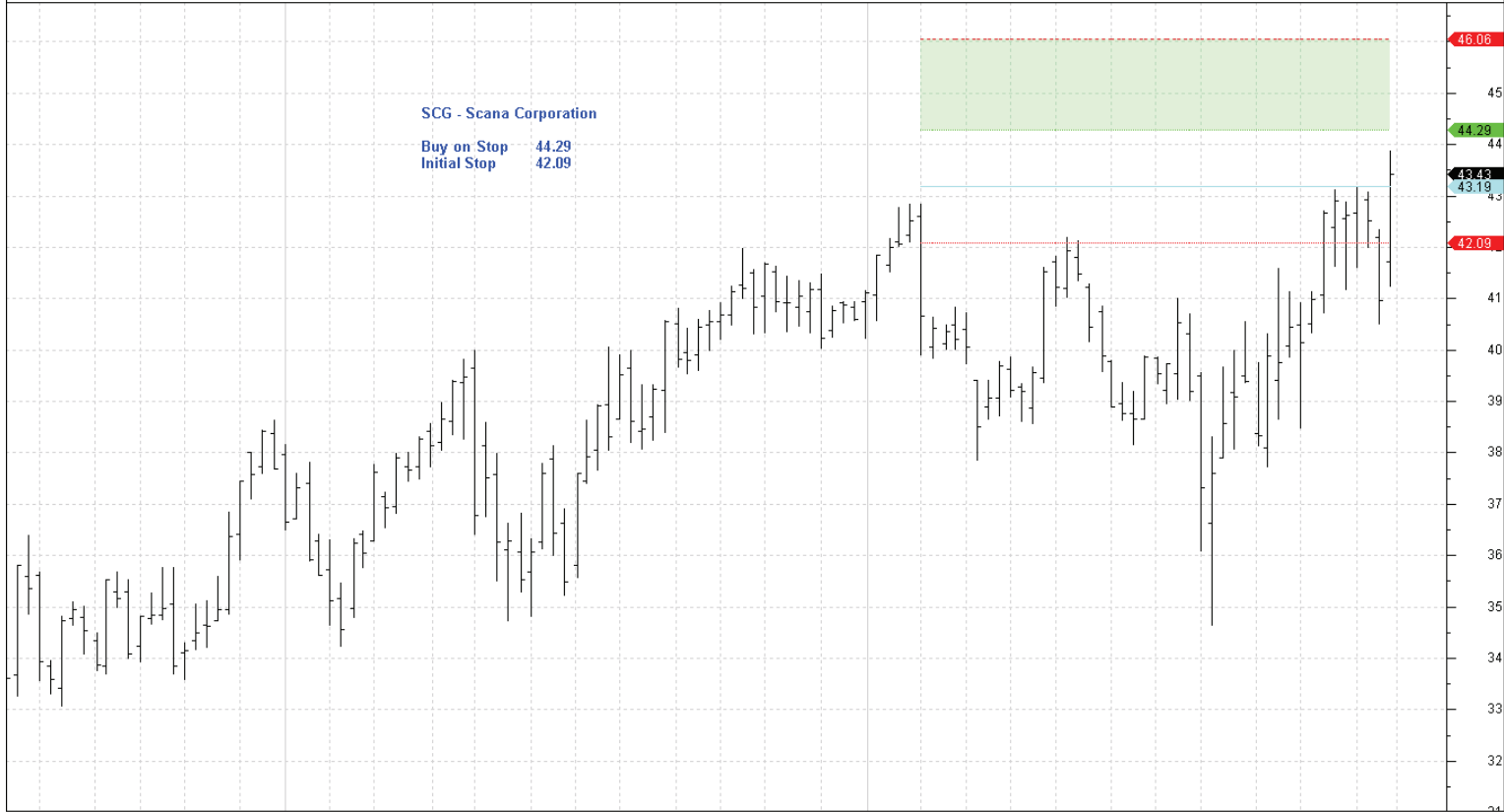
GIS Weekly CI=39.90000 O=38.74000 H=40.06000 L=38.33000 +1.67000 +4.37% GIS Weekly LW-MCL(25-04-2011,40.25,5,C,C) Ma=42.34602 Mi=41.12000 R=40.25000 I=39.38000 01-12-2011



Aug Sep Oct Nov Dec Jan Feb Mar Apr May Jun Jul Aug Sep Oct Nov Dec 2009 2010 2011

© BullSystems www.bullsystems.com

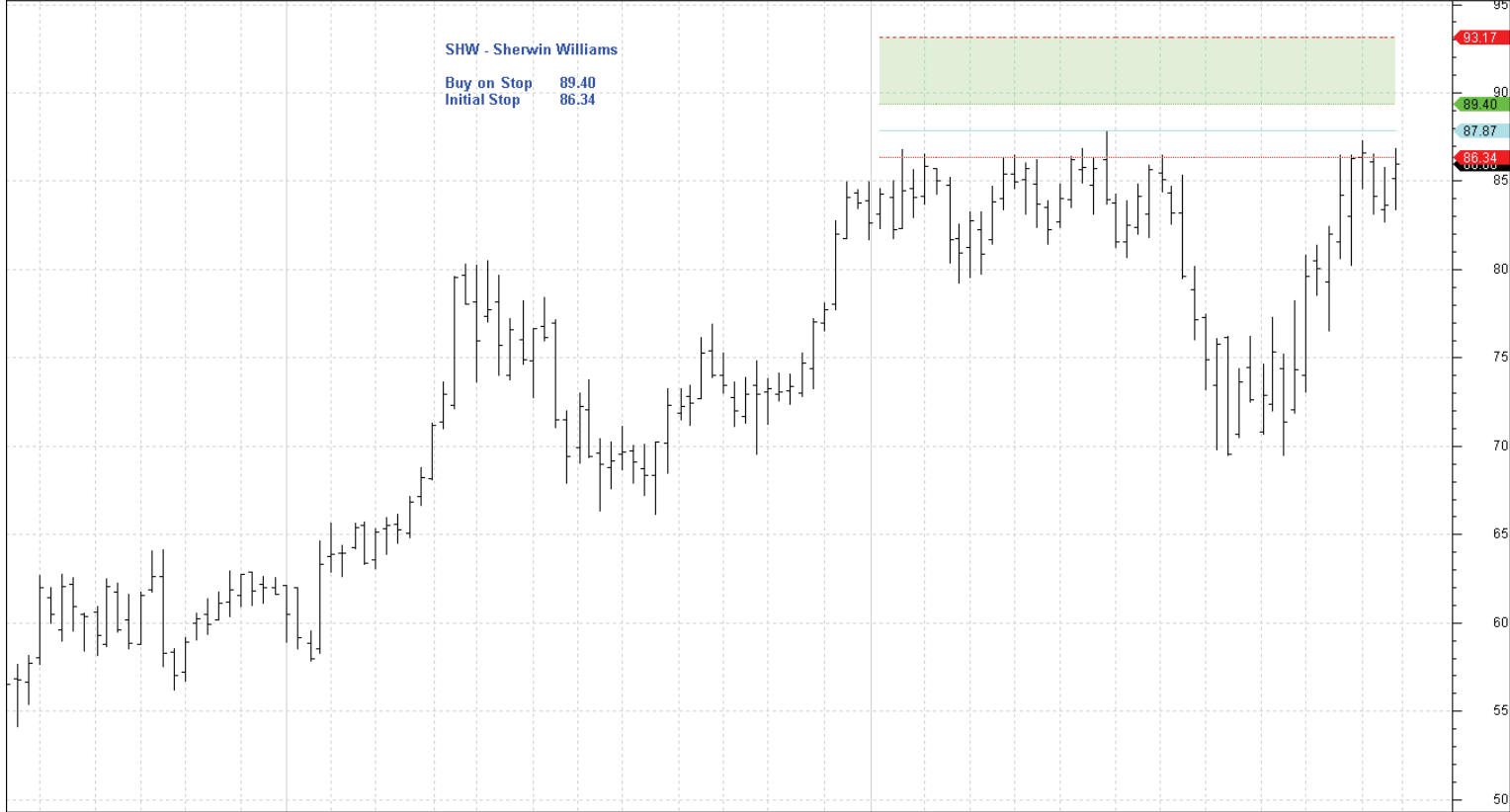
SCG Weekly CI=43.43000 O=41.72000 H=43.88000 L=41.24000 +2.46000 +6.00% SCG Weekly LW-MCL(31-01-2011,43.19,5,C,C) Ma=46.05942 Mi=44.29200 R=43.19000 I=42.08800 01-12-2011



Aug Sep Oct Nov Dec Jan Feb Mar Apr May Jun Jul Aug Sep Oct Nov Dec 2009 2010 2011

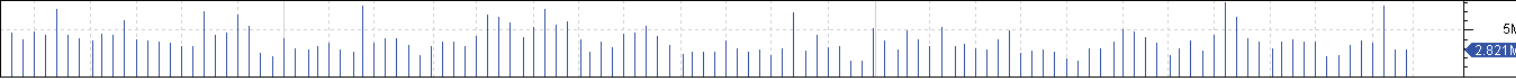
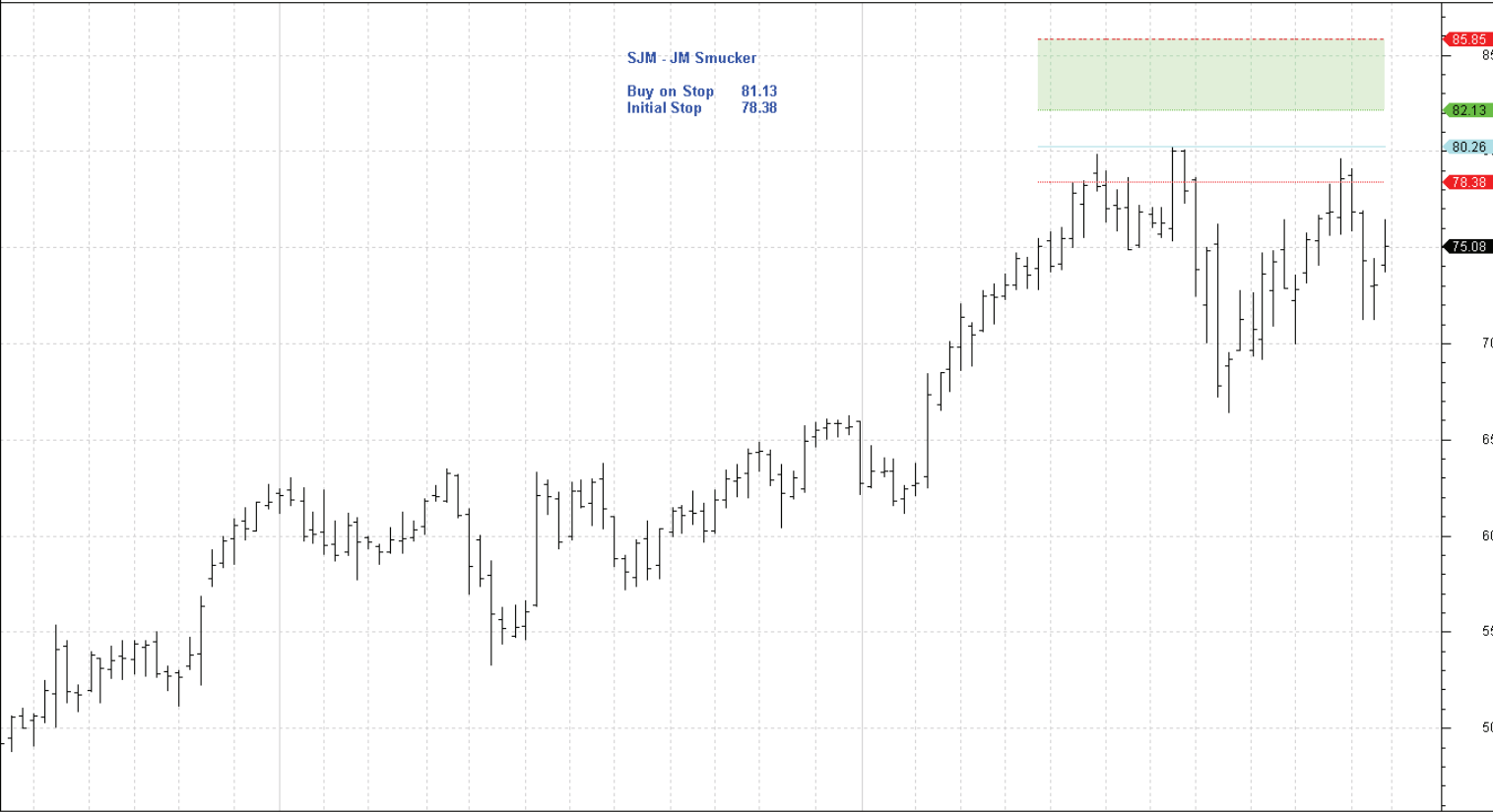
© BullSystems www.bullsystems.com

SHW Weekly CI=86.00000 O=85.16000 H=86.85000 L=83.42000 +2.36000 +2.82% SHW Weekly LW-MCL(03-01-2011,87.87,5,C,C) Ma=93.16832 Mi=89.39800 R=87.87000 I=86.34200 01-12-2011



Aug Sep Oct Nov Dec Jan Feb Mar Apr May Jun Jul Aug Sep Oct Nov Dec 2009 2010 2011

© BullSystems www.bullsystems.com



	Aug	Sep	Oct	Nov	Dec	Jan	Feb	Mar	Apr	May	Jun	Jul	Aug	Sep	Oct	Nov	Dec	Jan	Feb	Mar	Apr	May	Jun	Jul	Aug	Sep	Oct	Nov	Dec	
2009						2010											2011													