

Week Ending 10<sup>th</sup> February 2012

New York Stock Exchange has shown some strength this week and a number of new orders have arisen.

Have a great week all

## New York Stock Exchange

### Currency – USD\$

Entries: Lockheed Martin, Torchmark

Exits: American Electric, Avery Dennison, General Mills, Pfizer, Exxon Mobil

The colour coding we are currently using is as follows:

Amended orders or stops

Retained Orders or stops – no change

New working orders

Immediate action required

Short Sell

### Open Positions

Stops:	Code	Old	Action	New
<b><u>Amended</u></b>				
Ball Corporation	BLL	35.94	Amend	36.27
CBS Corporation	CBS	26.99	Amend	27.12
DTE Energy	DTE	51.57	Amend	51.88
Health Care RT	HCN	54.30	Amend	55.25
Stryker	SYK	50.00	Amend	51.19
Vulcan Materials	VMC	40.49	Amend	40.55

### **Retained**

Congara Foods	CAG	26.40	Retain	26.40
CMS Energy	CMS	21.09	Retain	21.09
Comercia	CMA	26.76	Retain	26.76
Health Care Prop	HCP	39.68	Retain	39.68
Hershey Foods	HSY	60.07	Retain	60.07
Lockheed Martin	LMT	81.33	Retain	81.33
McCormick	MKC	49.76	Retain	49.76
Merck & Co	MRK	37.43	Retain	37.43

Roper Industries	ROP	86.67	Retain	86.67
Scana Corporation	SCG	42.28	Retain	43.70
Sherwin Williams	SHW	95.12	Retain	95.12
Torchmark	TMK	44.96	Retain	44.96
Williams	WMB	27.75	Retain	27.75
Xcel Energy	XEL	25.89	Retain	25.89
Yum Brands	YUM	60.55	Retain	60.55

## Cancelled Orders

## Working Orders

Company	Code	Direction	Entry	Stop
---------	------	-----------	-------	------

## Amended

Chevron Texaco	CVX	Buy	111.9	108.1
Edison International	EIX	Buy	41.94	41.20
JM Smucker	SJM	Buy	81.55	78.97

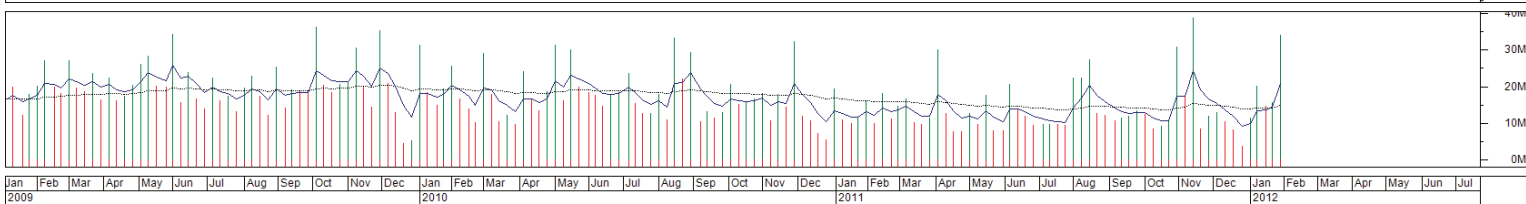
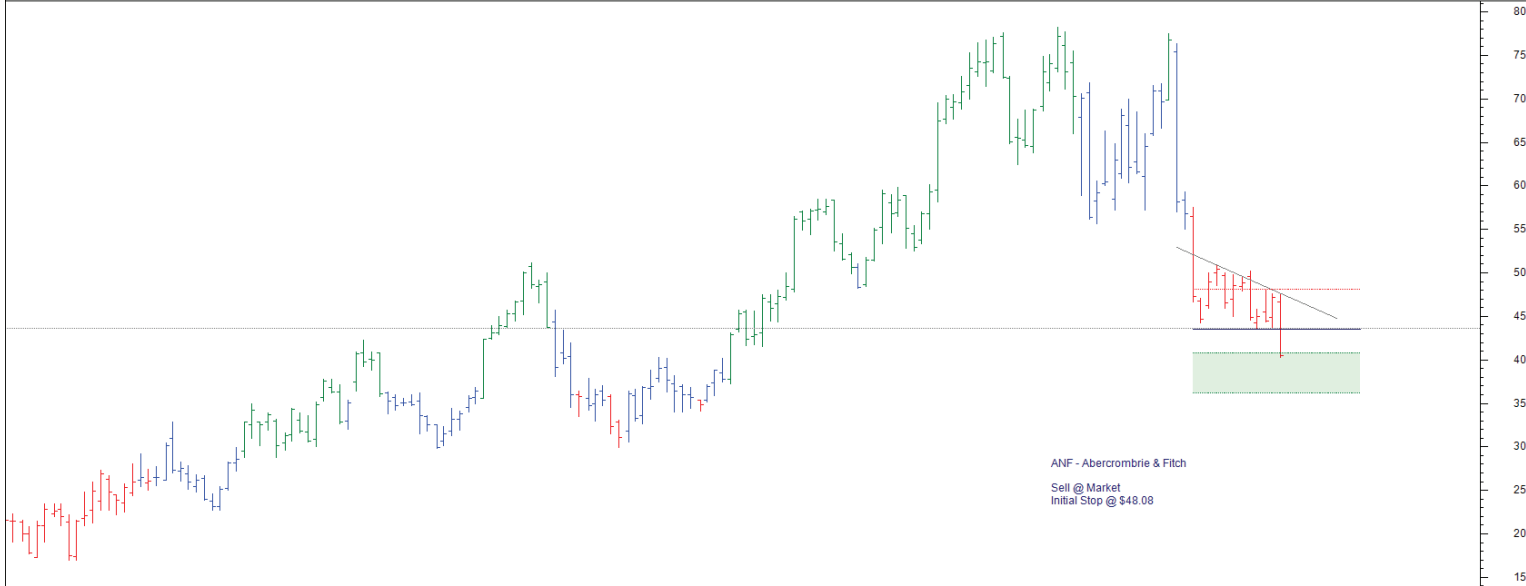
## Retained

Nil

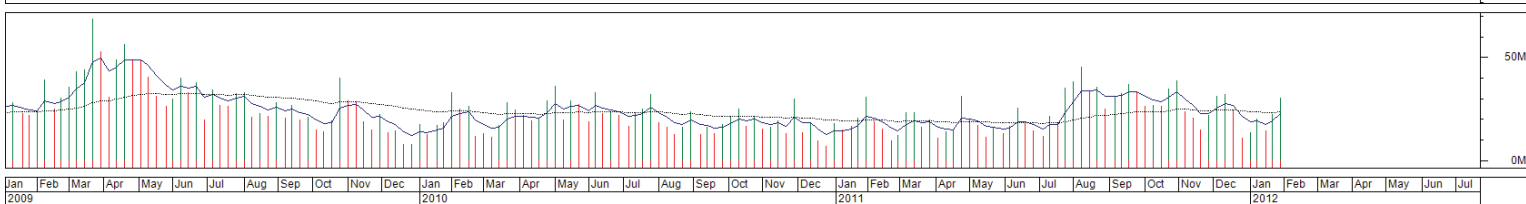
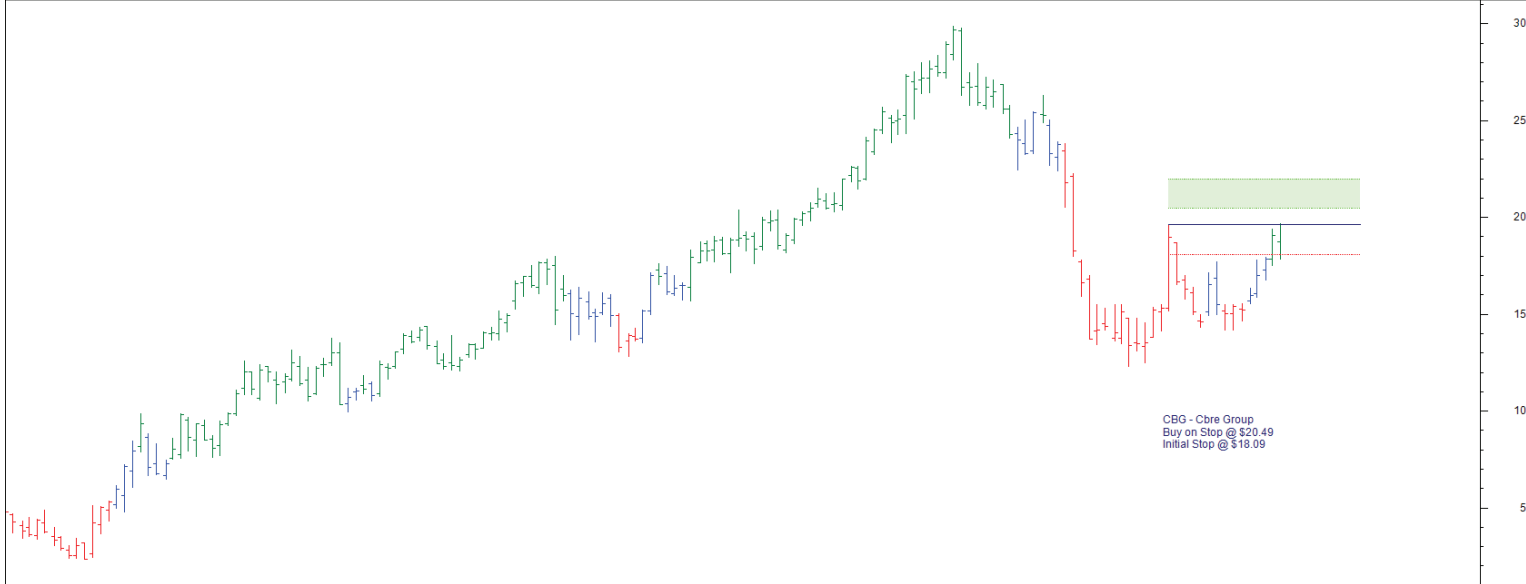
## New

Abercrombie & Fitch	ANF	Sell	Market	48.08
CBRE Group	CBG	Buy	20.49	18.09
Ingersoll Rand	IR	Buy	38.35	34.63
Morgan Stanley	MS	Buy	20.85	18.06
Nvidia Group	NVDA	Buy	17.00	15.14
Priceline	PCLN	Buy	572.12	530.31
Patterson & Co	PDCO	Buy	33.28	31.12
Qualcomm International	QCOM	Buy	61.12	57.53
United Technologies	UTX	Buy	81.95	77.04
US Steel	X	Buy	33.20	29.38

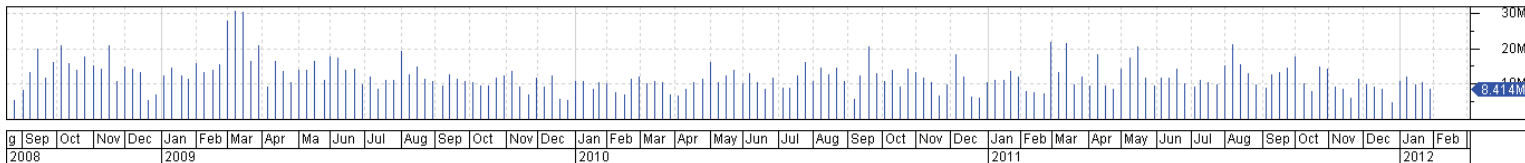
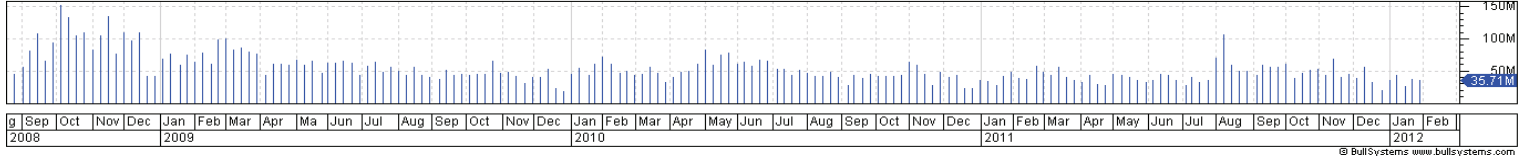
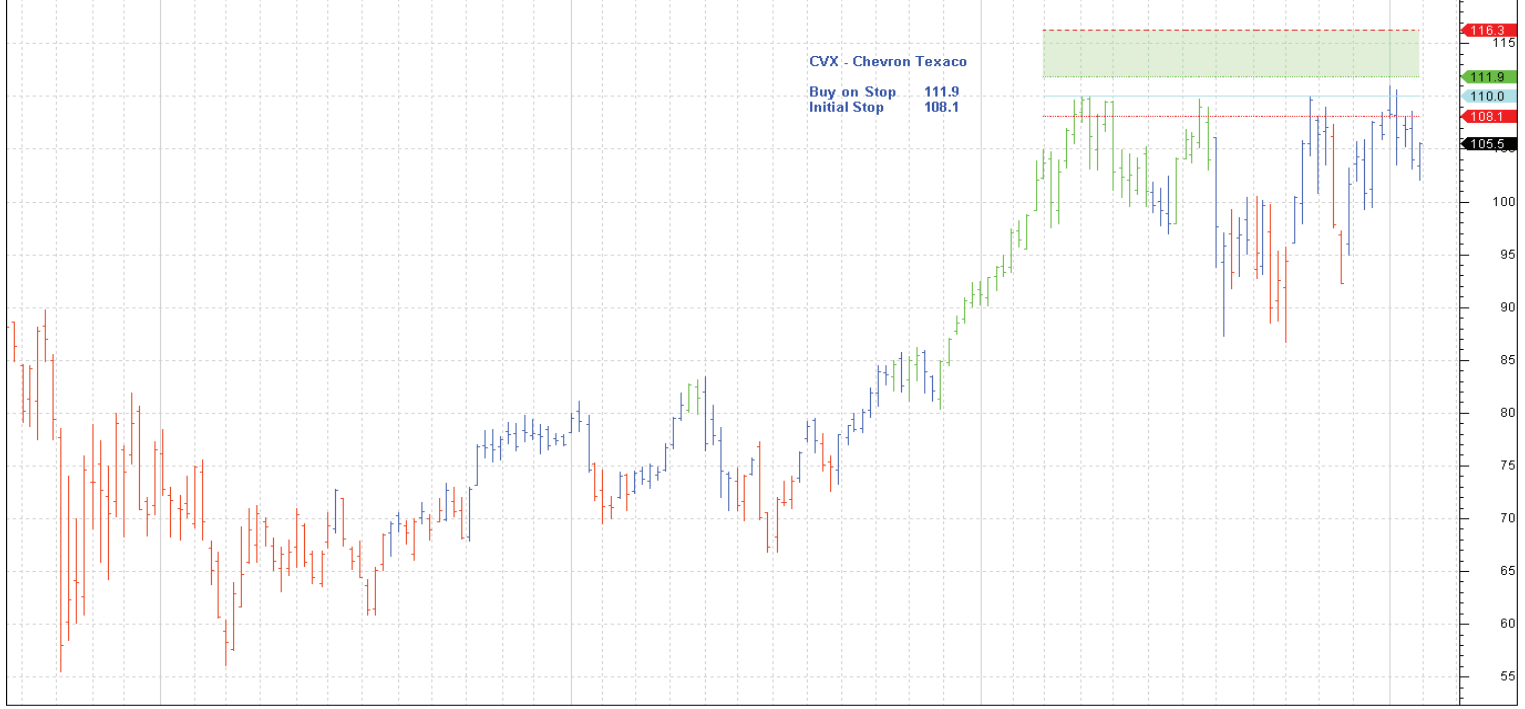
## Charts

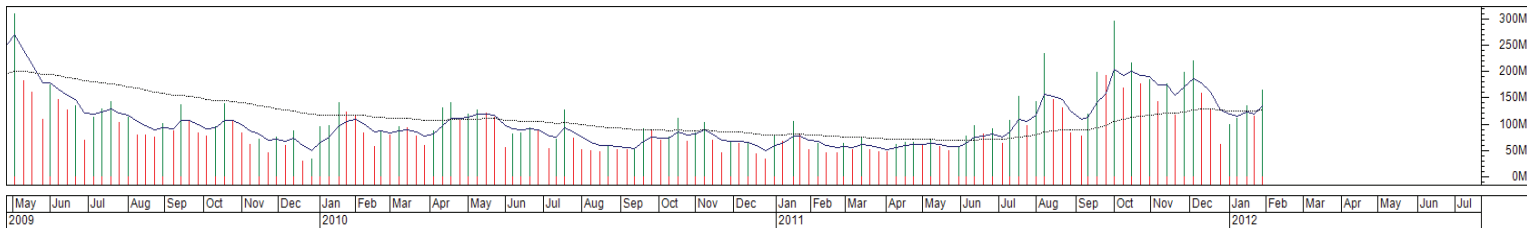
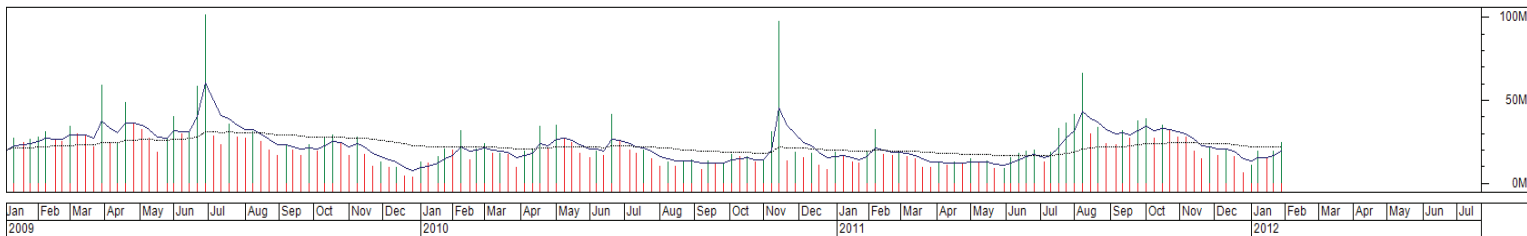
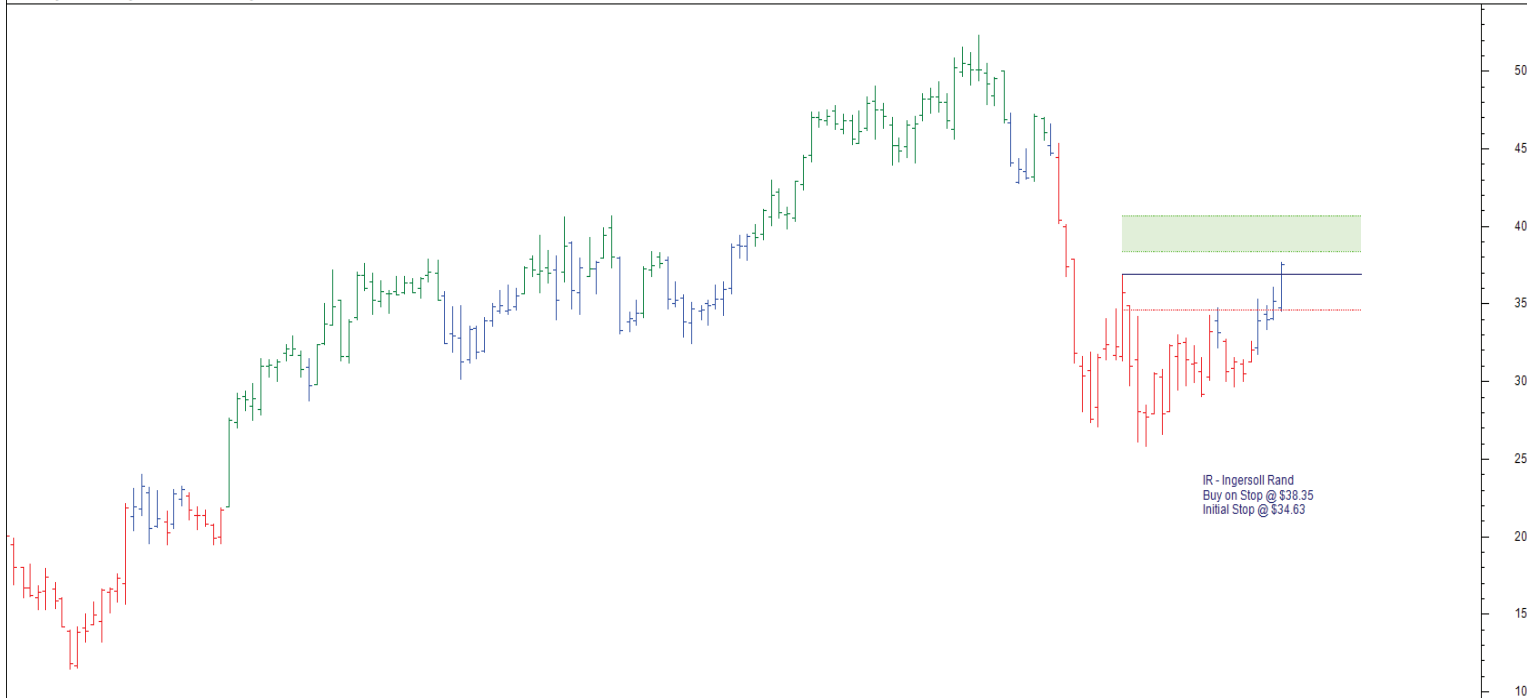


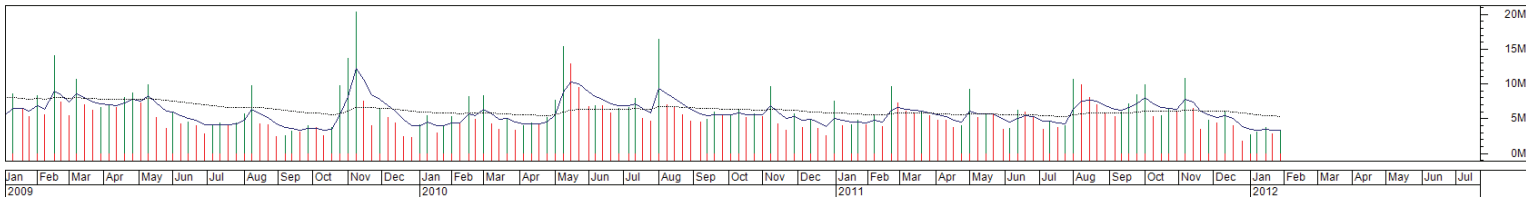
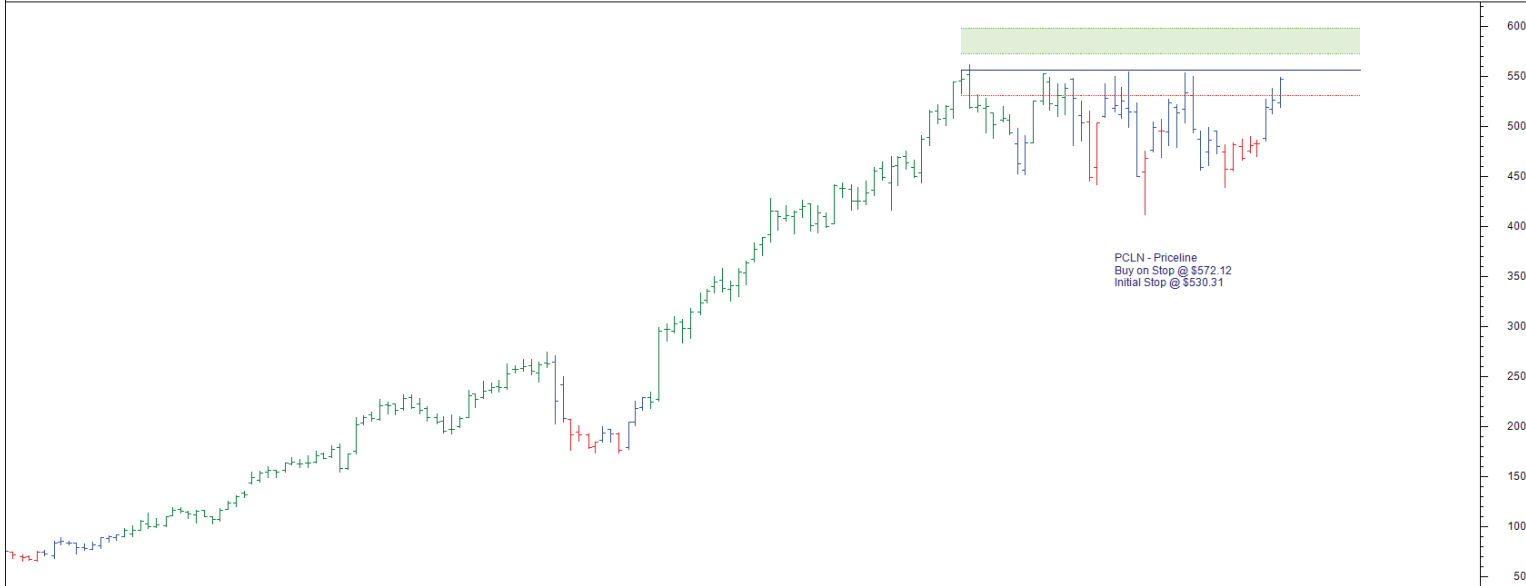
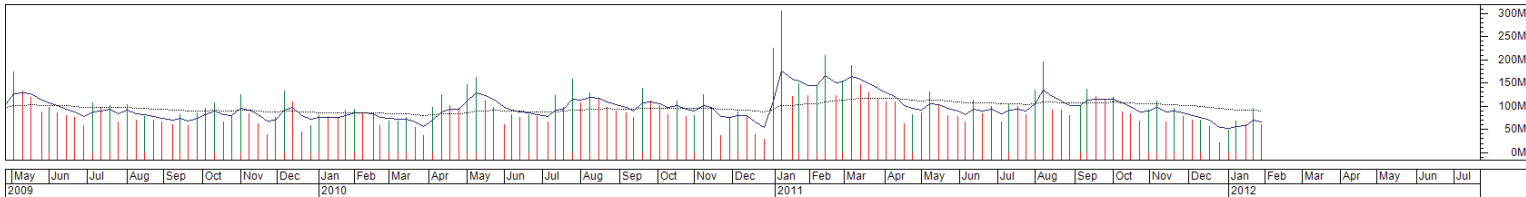
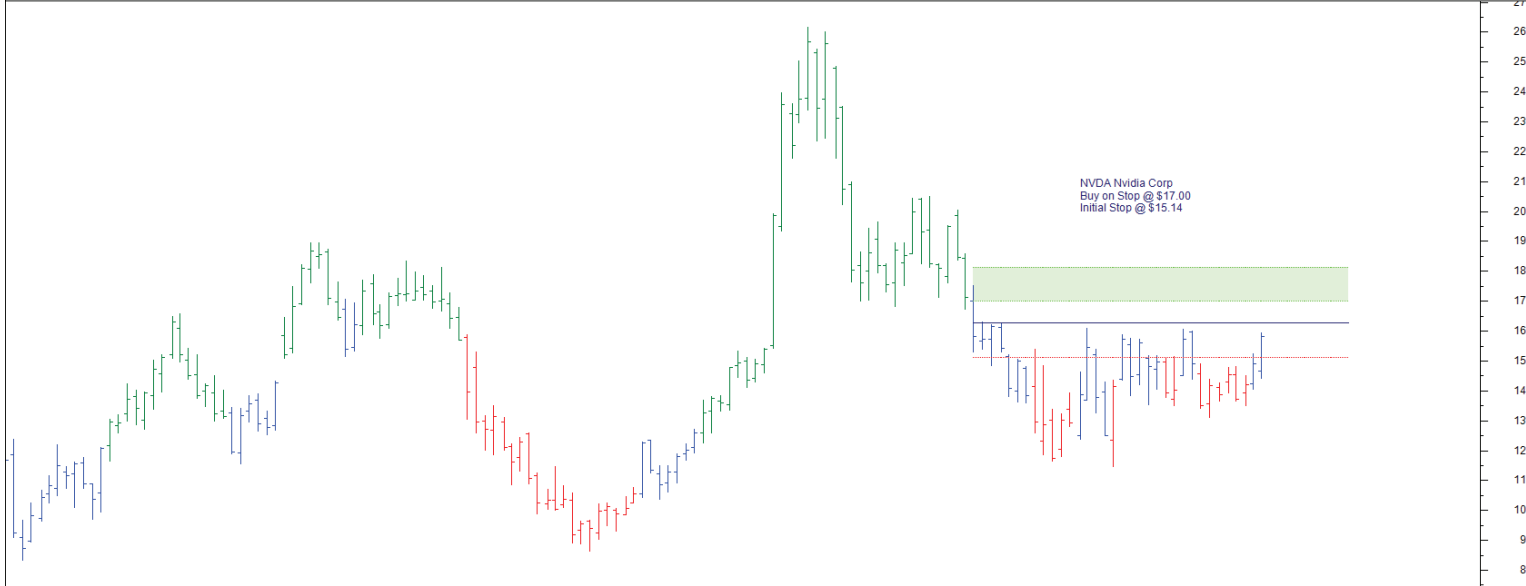
Jan Feb Mar Apr May Jun Jul Aug Sep Oct Nov Dec 2009 Jan Feb Mar Apr May Jun Jul Aug Sep Oct Nov Dec 2010 Jan Feb Mar Apr May Jun Jul Aug Sep Oct Nov Dec 2011 Jan Feb Mar Apr May Jun Jul Aug Sep Oct Nov Dec 2012

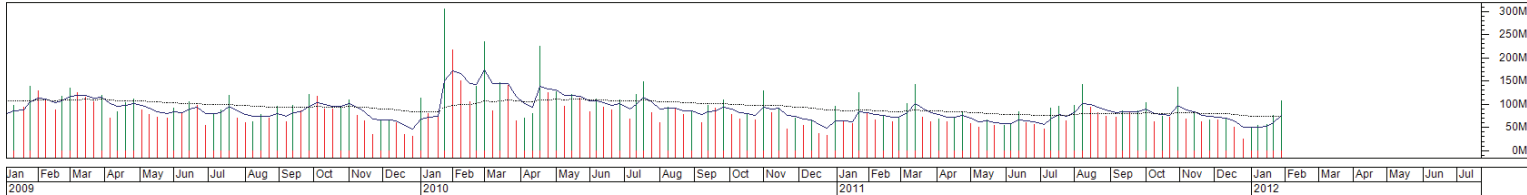
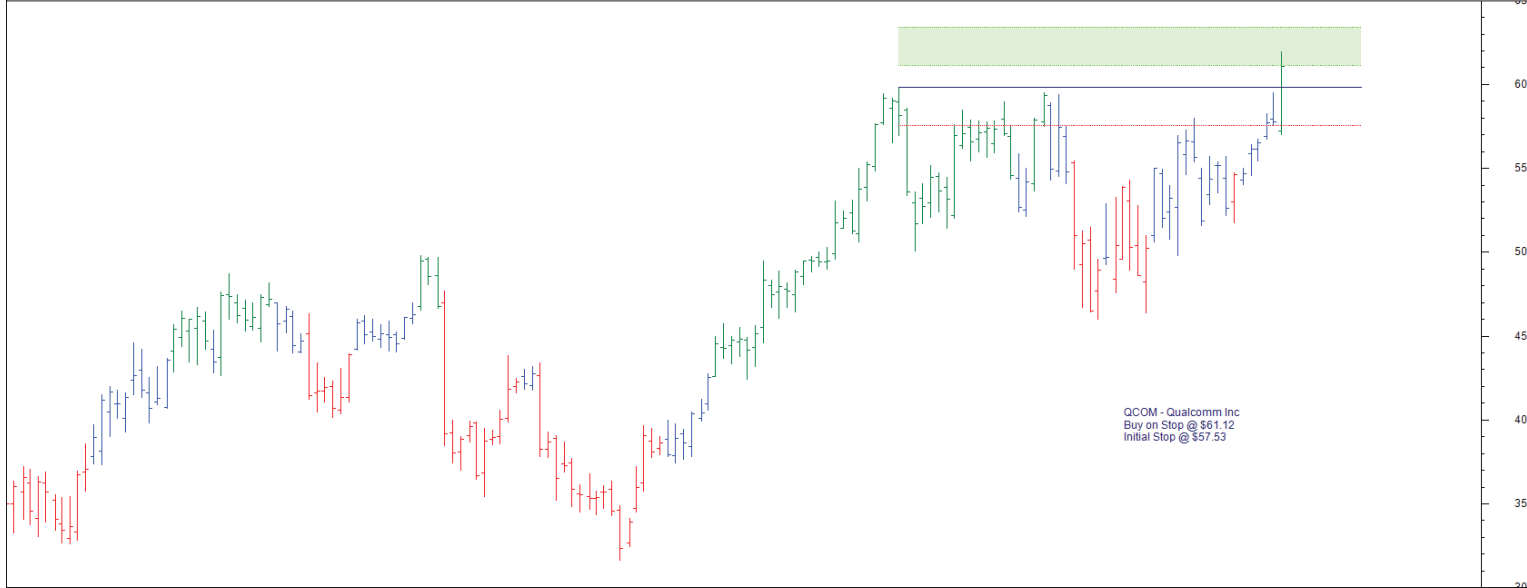
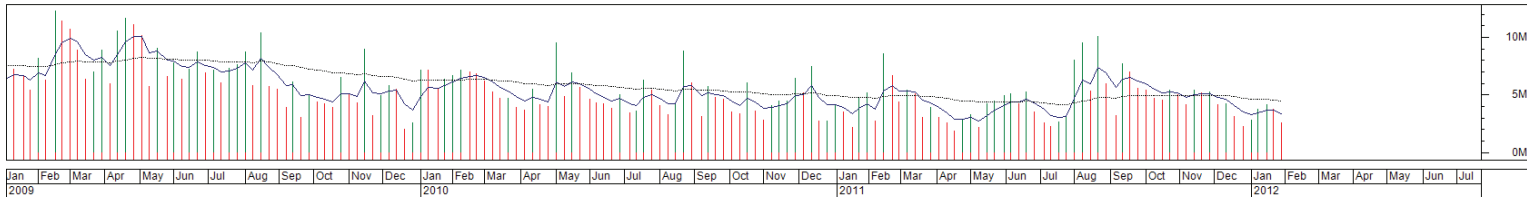
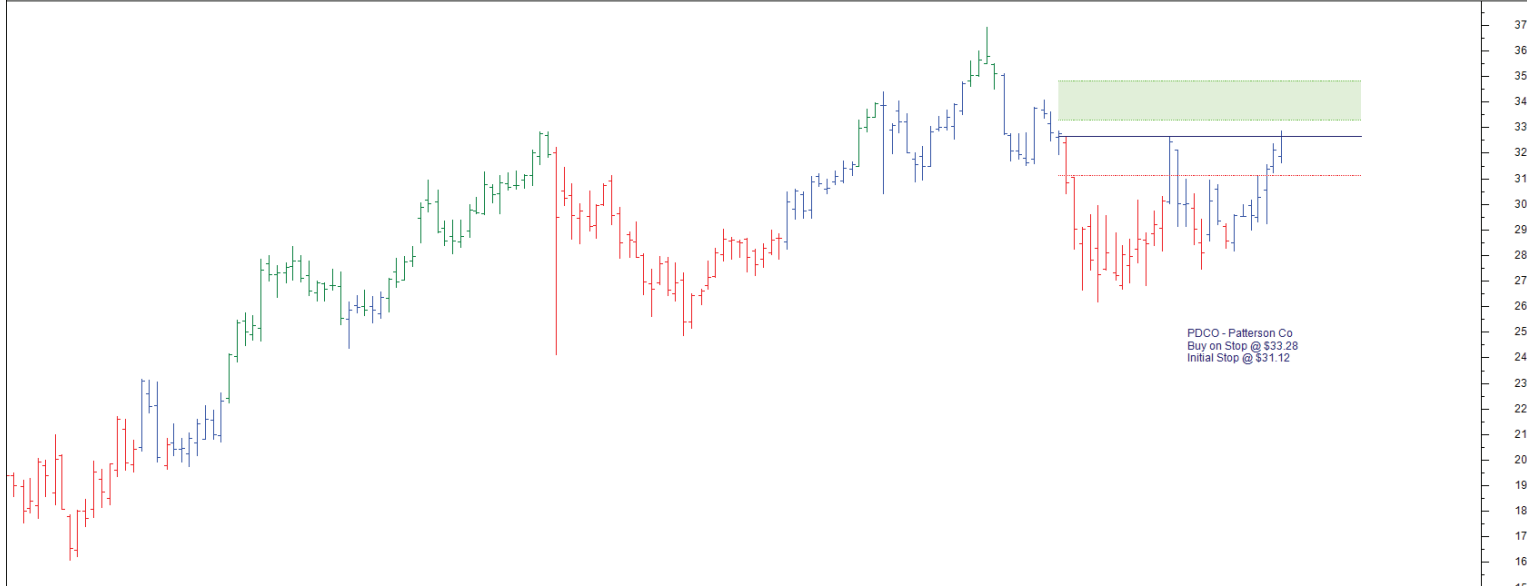


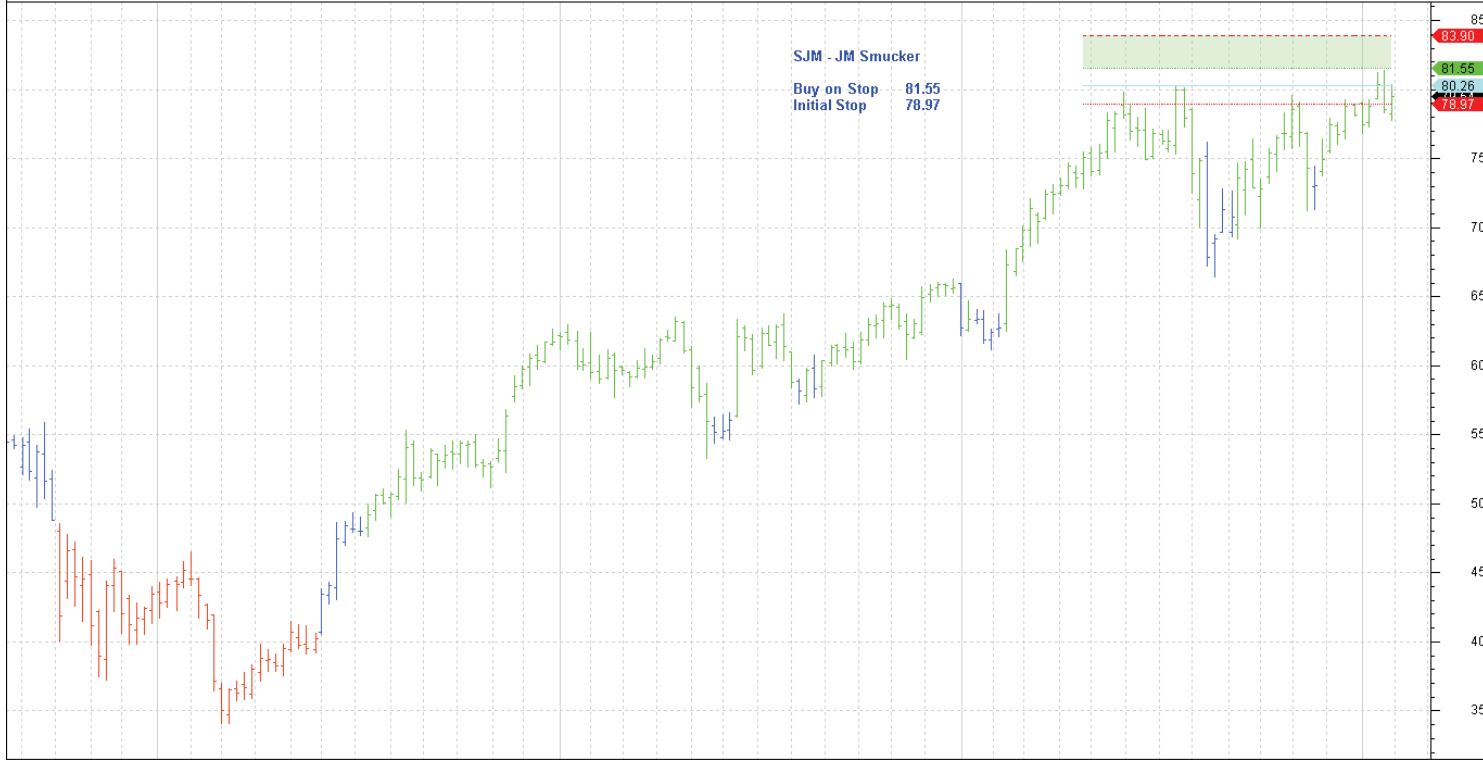
Jan Feb Mar Apr May Jun Jul Aug Sep Oct Nov Dec 2009 Jan Feb Mar Apr May Jun Jul Aug Sep Oct Nov Dec 2010 Jan Feb Mar Apr May Jun Jul Aug Sep Oct Nov Dec 2011 Jan Feb Mar Apr May Jun Jul Aug Sep Oct Nov Dec 2012











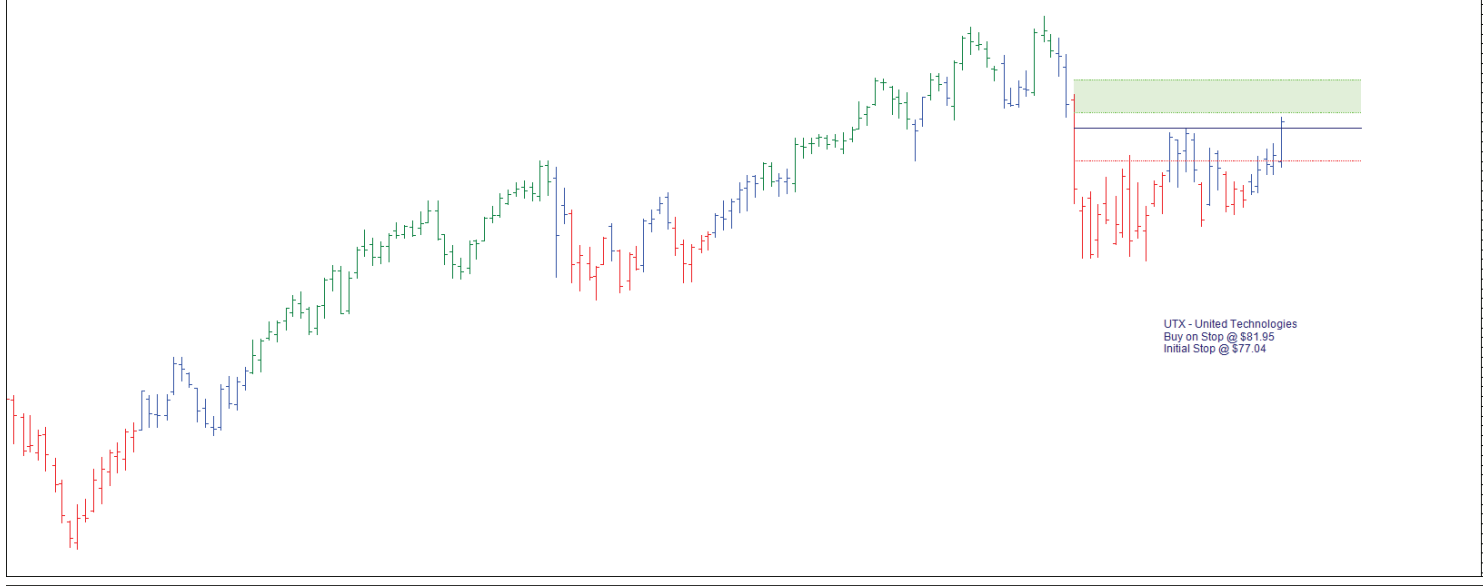
85  
83.90  
81.55  
80.26  
78.97  
75  
70  
65  
60  
55  
50  
45  
40  
35

SJM - JM Smucker  
Buy on Stop 81.55  
Initial Stop 78.97



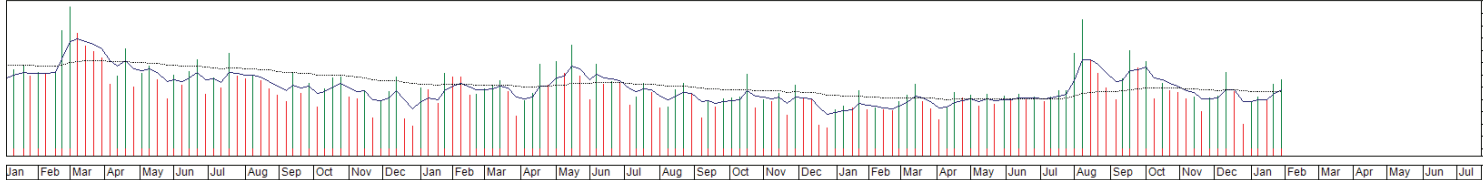
2.070M

g | Sep | Oct | Nov | Dec | Jan | Feb | Mar | Apr | Ma | Jun | Jul | Aug | Sep | Oct | Nov | Dec | Jan | Feb | Mar | Apr | May | Jun | Jul | Aug | Sep | Oct | Nov | Dec | Jan | Feb |  
2008 | 2009 | 2010 | 2011 | 2012



90  
85  
80  
75  
70  
65  
60  
55  
50  
45  
40  
35

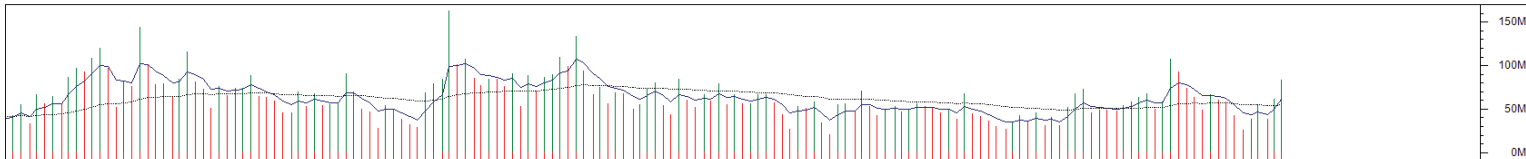
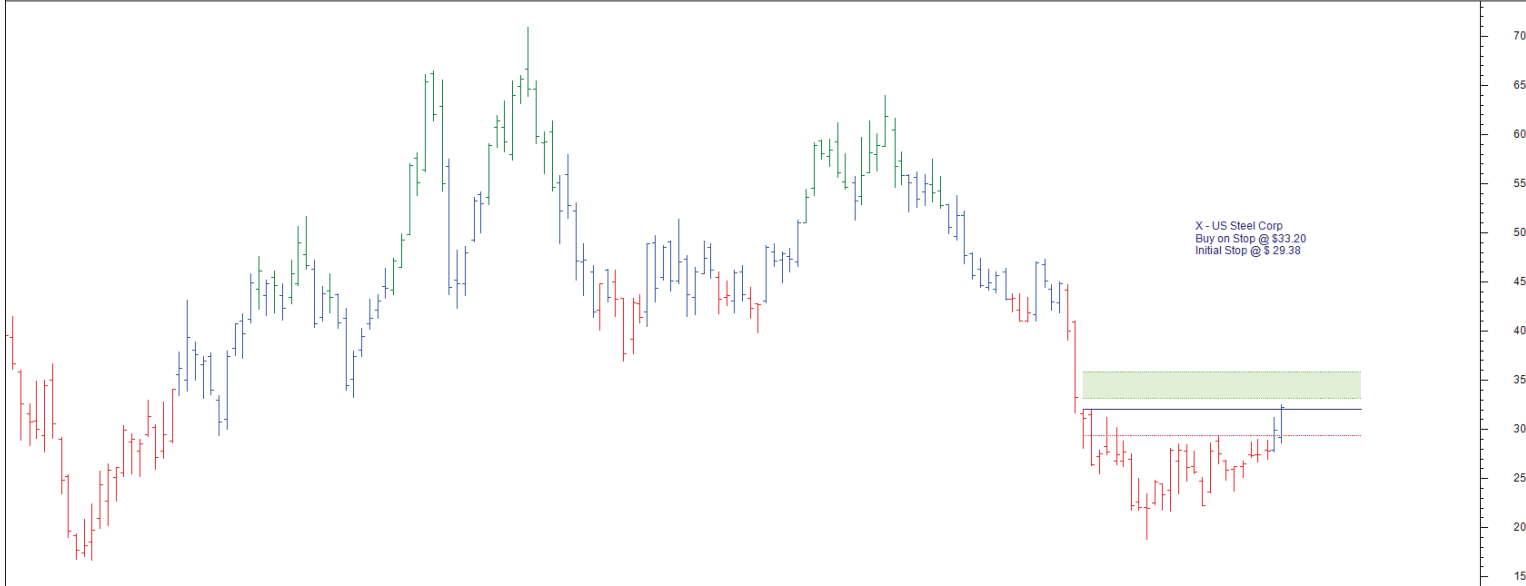
UTX - United Technologies  
Buy on Stop @ \$81.95  
Initial Stop @ \$77.04



50M  
40M  
30M  
20M  
10M  
0M

Jan | Feb | Mar | Apr | May | Jun | Jul | Aug | Sep | Oct | Nov | Dec | Jan | Feb | Mar | Apr | May | Jun | Jul | Aug | Sep | Oct | Nov | Dec | Jan | Feb | Mar | Apr | May | Jun | Jul |  
2009 | 2010 | 2011 | 2012





Jan	Feb	Mar	Apr	May	Jun	Jul	Aug	Sep	Oct	Nov	Dec	Jan	Feb	Mar	Apr	May	Jun	Jul	Aug	Sep	Oct	Nov	Dec	Jan	Feb	Mar	Apr	May	Jun	Jul							
2009												2010												2011							2012						