

Week Ending 11<sup>th</sup> November, 2011-10-23

The last week also has been very interesting with Worldwide market reactions to the Euro zone meetings and the proposed rectification plans for the debt crisis, yet again.

Greece which had hoped to delay a decision on the severe economic measure expected by the countries bailing them out (the old golden rule – He who has the Gold, makes the rules), by calling for a referendum to see if the Greek people wanted to accept the economic reform measures (read – Austerity measures – don't you just love the new terminology) on December 5<sup>th</sup>, but still expected to receive the Euro 10,000,000,000 proposed for them in 2 weeks time.

They were successfully slapped back into place with threat of expulsion from the Euro zone, Germany & France demanded all or nothing, probably fair since the great majority of the money was coming from banks within those countries.

The result seems to be that the measures are back on track and the markets appear to have settled down a little, we shall observe what happens over the coming weeks.

The US Equities Markets have reacted positively over the last few weeks and we see a number of new opportunities presenting themselves for possible entry over the coming weeks, with a number of new orders for this week.

Have a great week all

NYSE

Entries:

Exits: American Electric Power

The colour coding we are currently using is as follows:

Amended orders or stops

Retained Orders or stops – no change

New working orders

Immediate action required

Short Sell

Currency – USD\$

Open Positions

---

Stops:	Code	Old	Action	New
--------	------	-----	--------	-----

## Amended

Nil

## Retained

Exxon Mobil	XOM	72.621	Retain	72.621
Lowes	LOW	20.13	Retain	20.13
PP & L Inc	PPL	28.64	Retain	28.64

## Cancelled Orders

Nil

## Working Orders

Company	Code	Direction	Entry	Stop
---------	------	-----------	-------	------

## Amended

Lorillard Incorporated	LO	Buy	119.9	113.9
------------------------	----	-----	-------	-------

## Retained

Nil

## New

Constellation Energy	CEG	Buy	40.93	39.51
Chevron Texaco	CVX	Buy	114.0	105.9
DTE Energy	DTE	Buy	53.47	52.09
First Energy	FE	Buy	47.06	45.96
SAIC Inc	SAI	Buy	13.10	12.60
Scana Corporation	SCG	Buy	43.80	42.46
Sherwin Williams	SHW	Buy	90.26	85.48

JM Smucker

SJM

Buy

81.42

79.10

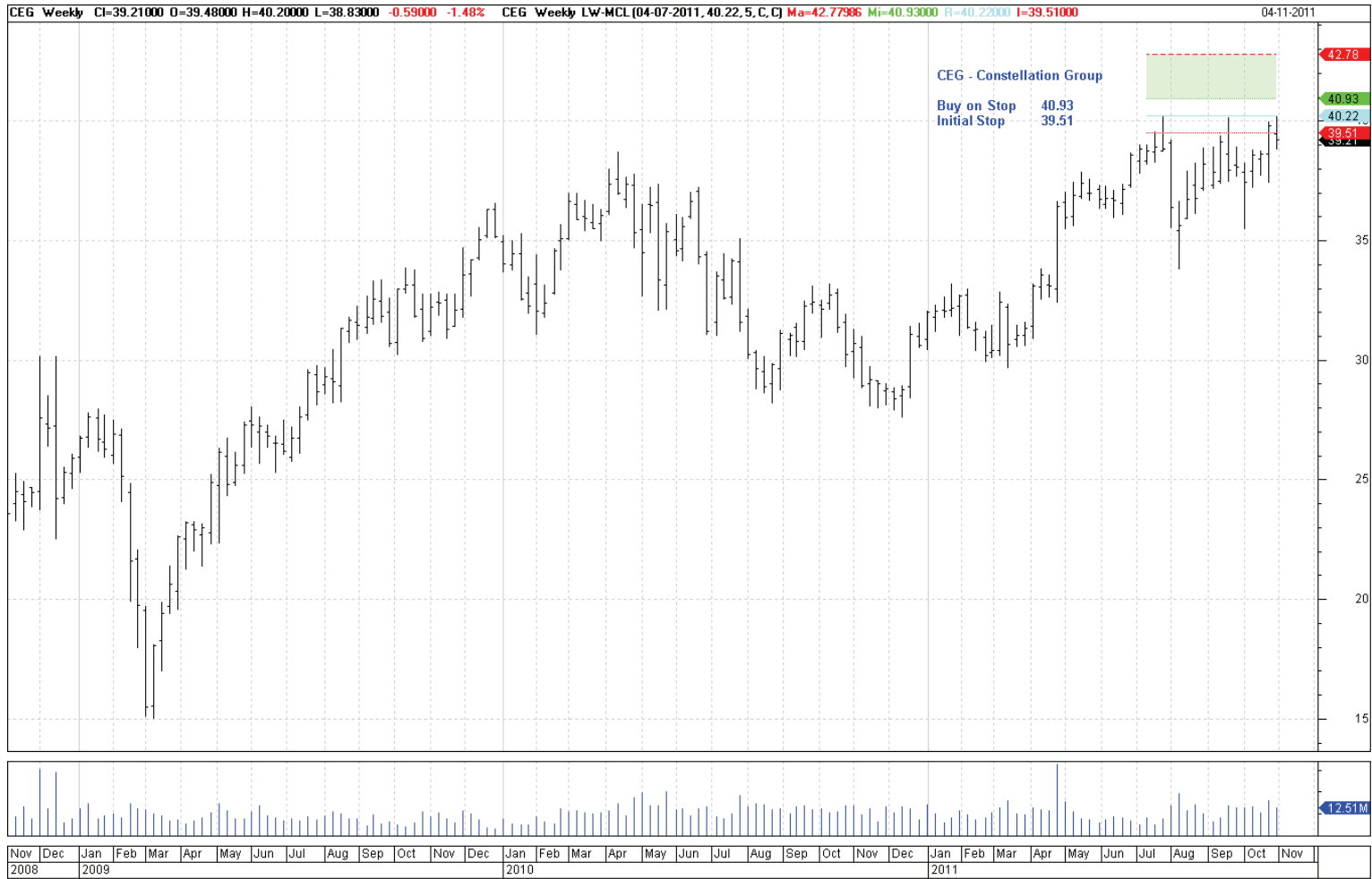
Time Warner Cable

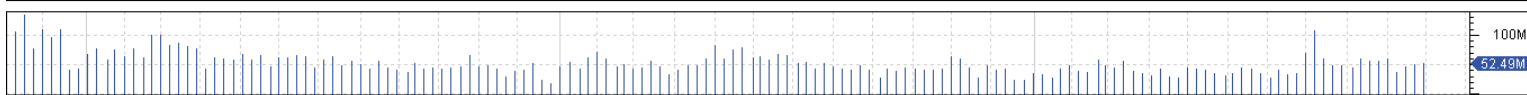
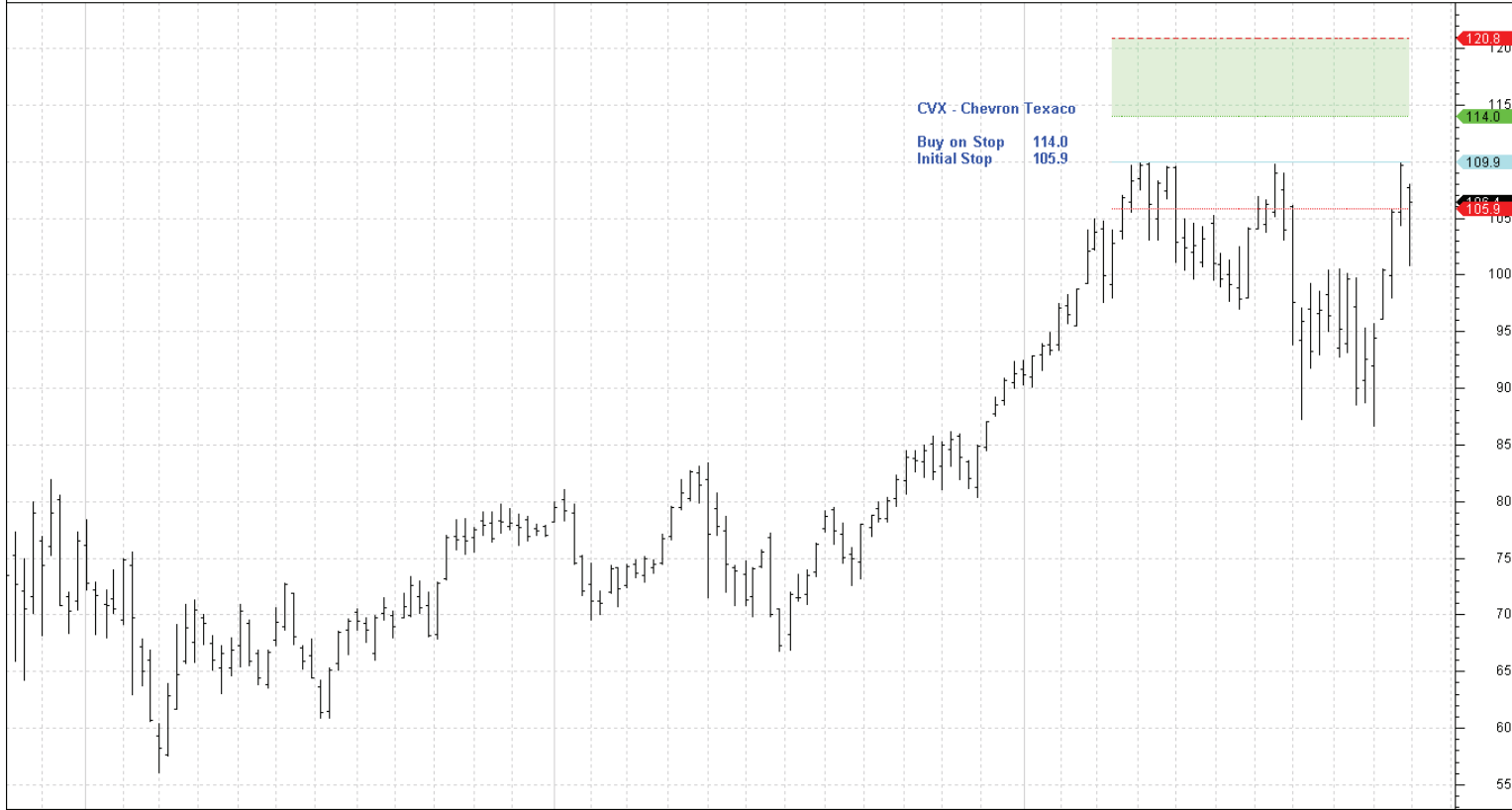
TWC

Sell

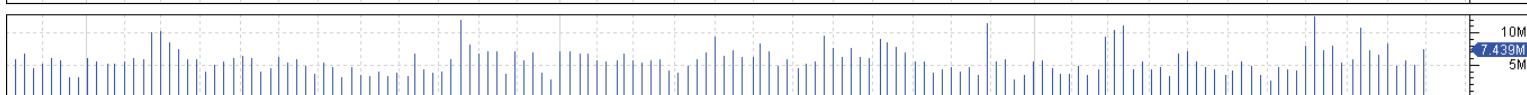
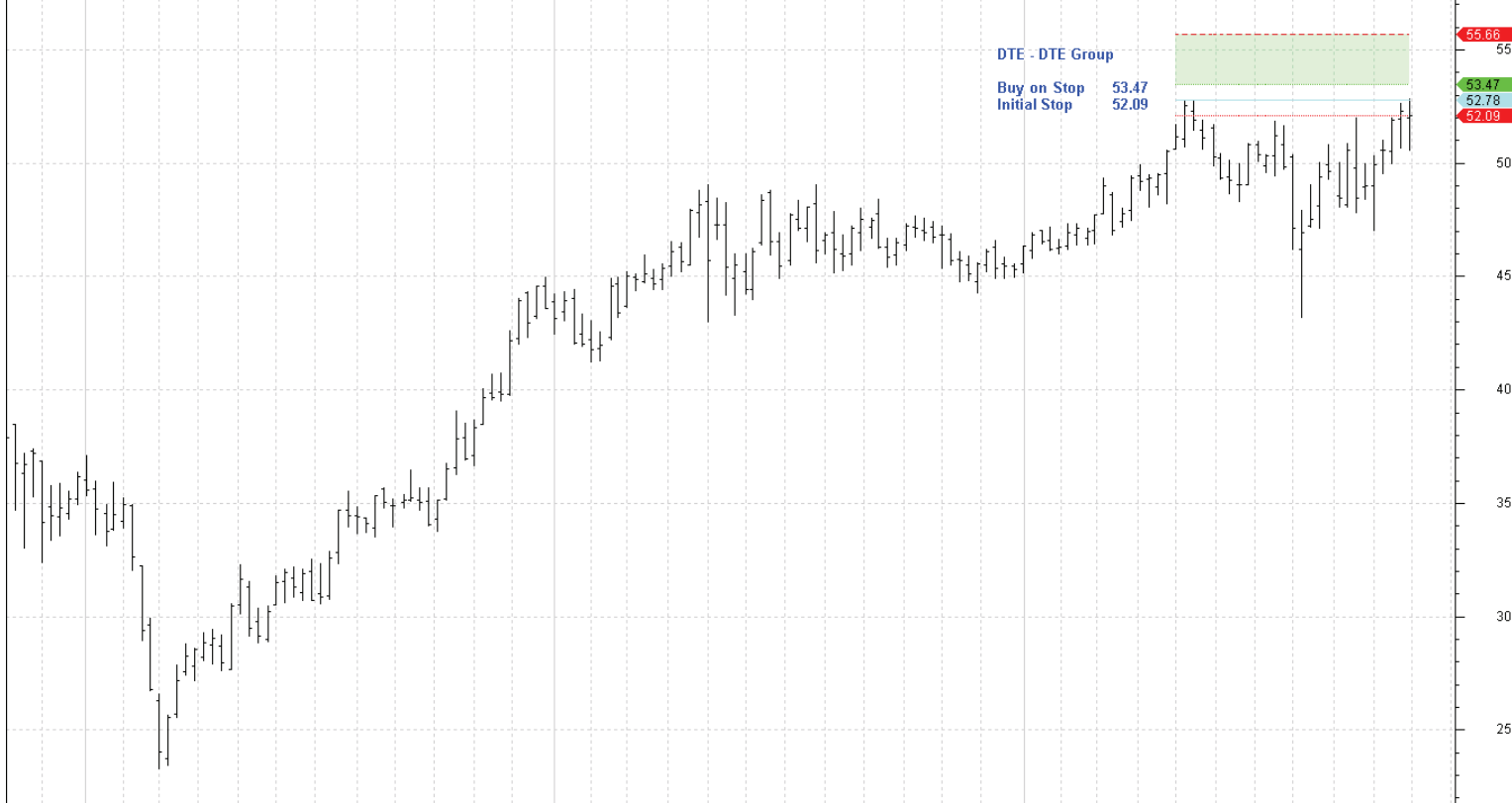
57.08

64.19

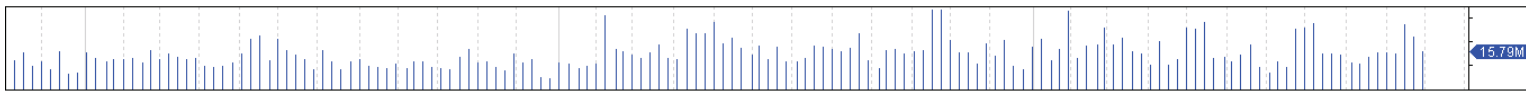
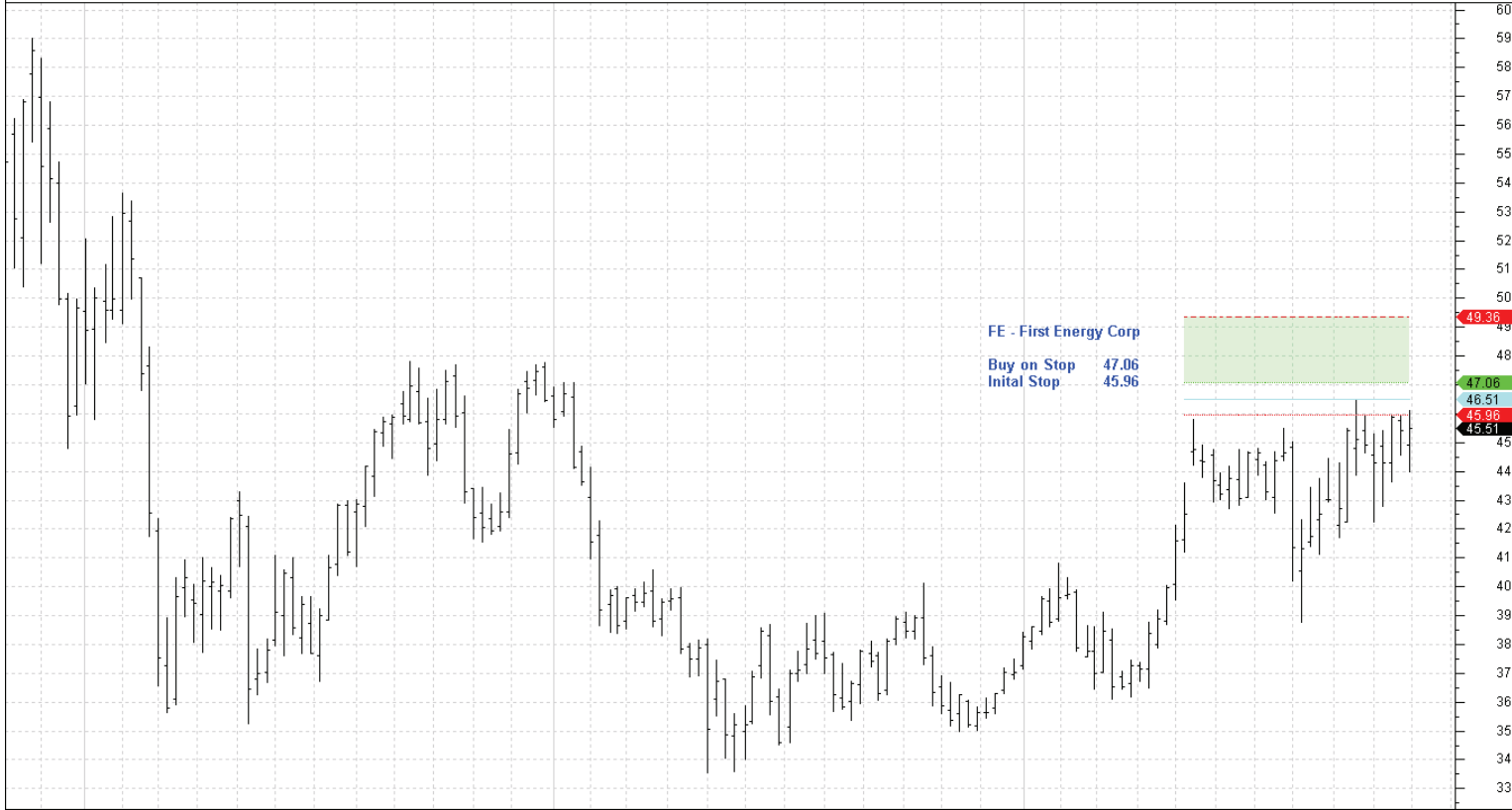




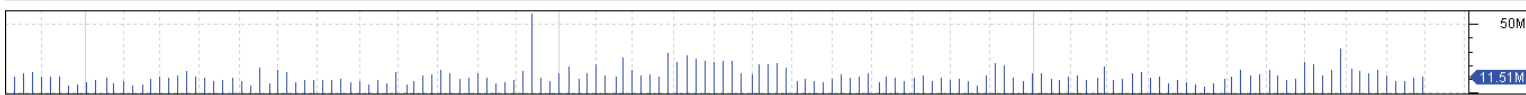
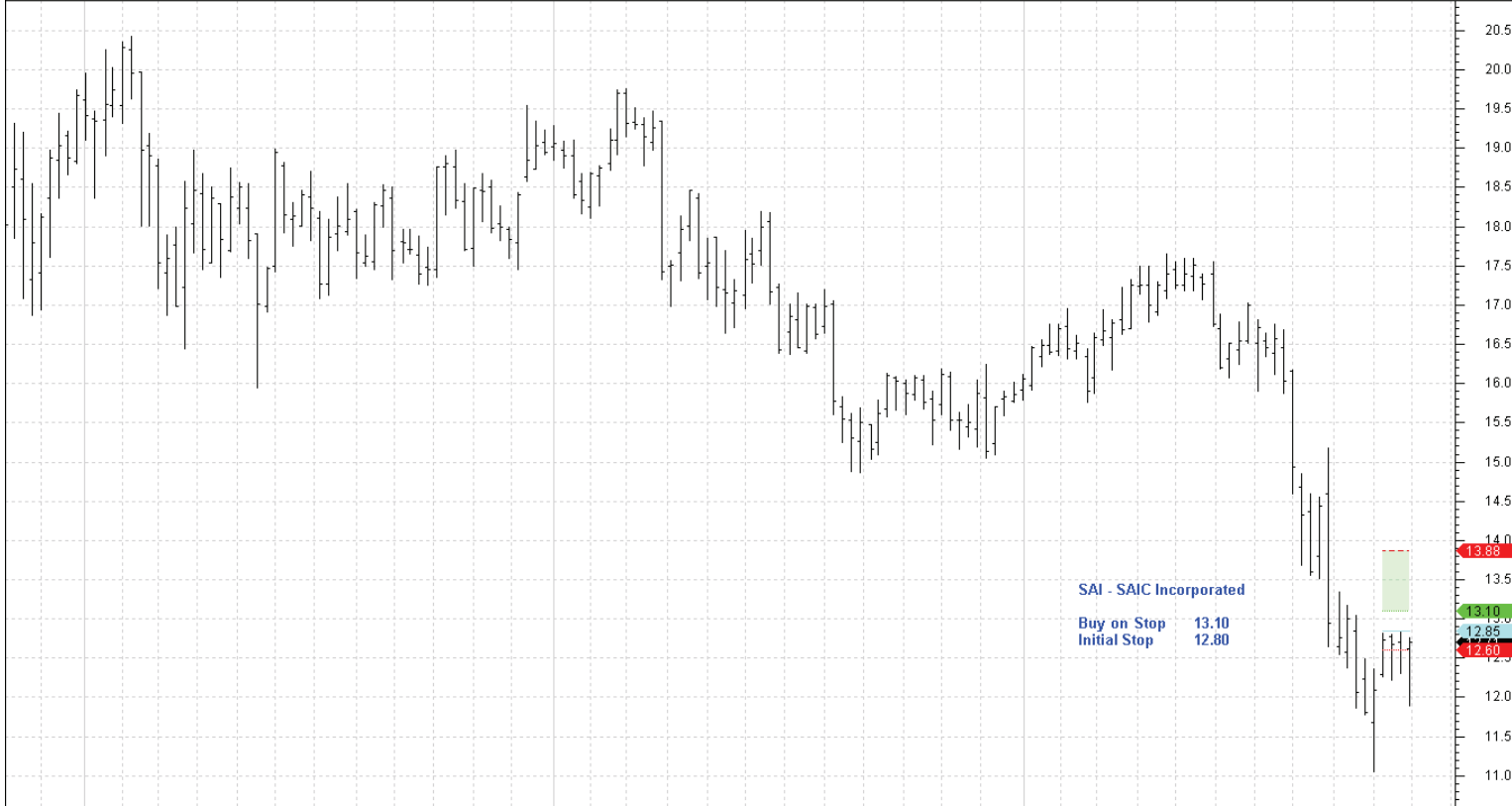
Nov	Dec	Jan	Feb	Mar	Apr	May	Jun	Jul	Aug	Sep	Oct	Nov	Dec	Jan	Feb	Mar	Apr	May	Jun	Jul	Aug	Sep	Oct	Nov	
2008		2009												2010											



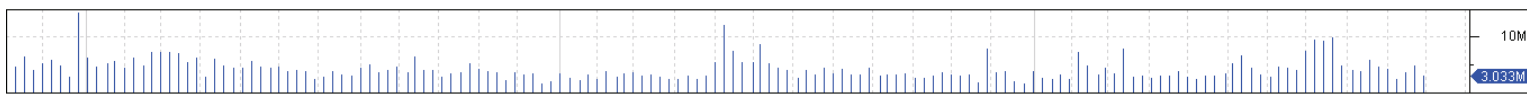
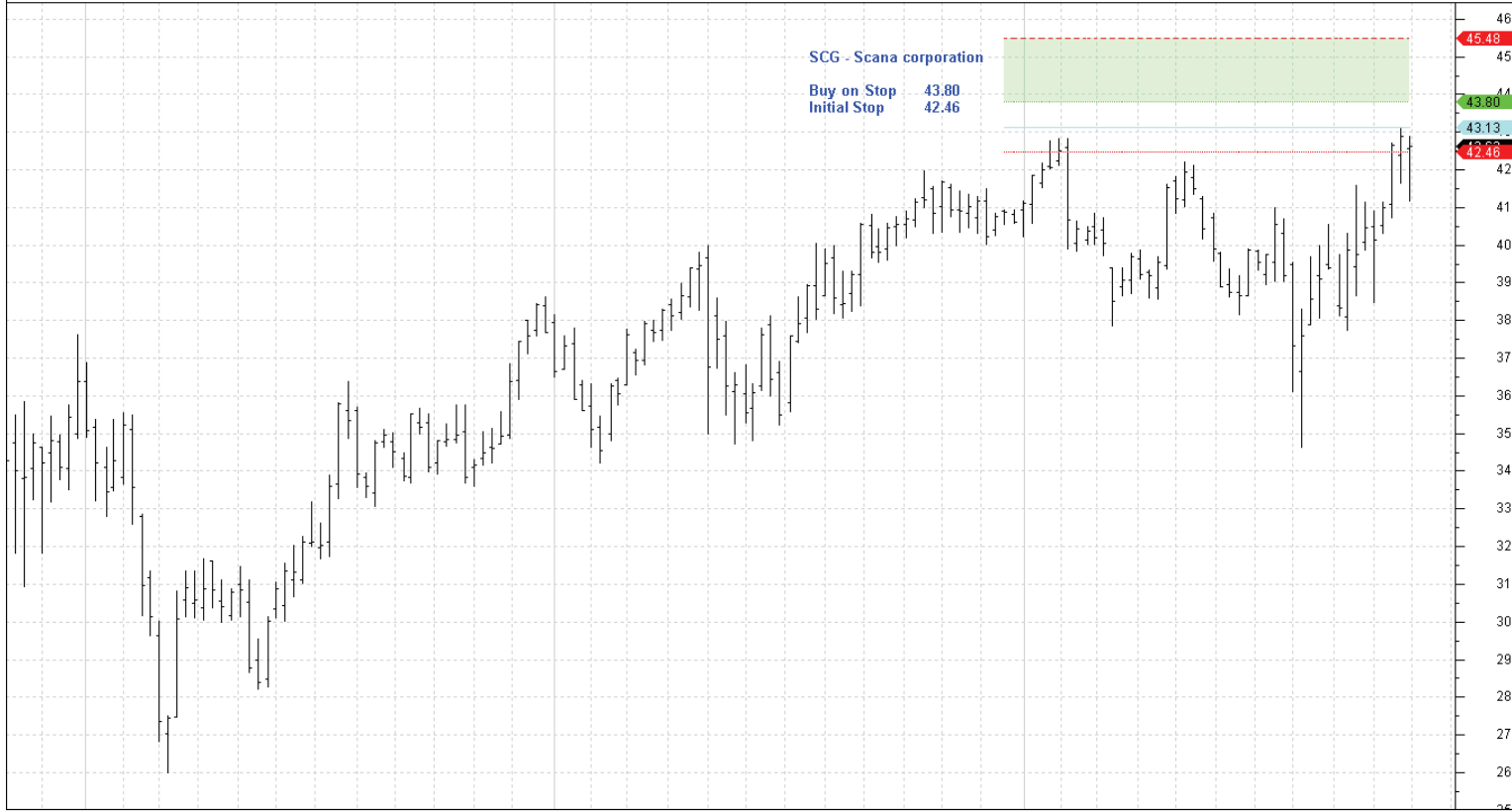
Nov	Dec	Jan	Feb	Mar	Apr	May	Jun	Jul	Aug	Sep	Oct	Nov	Dec	Jan	Feb	Mar	Apr	May	Jun	Jul	Aug	Sep	Oct	Nov	
2008		2009												2010											



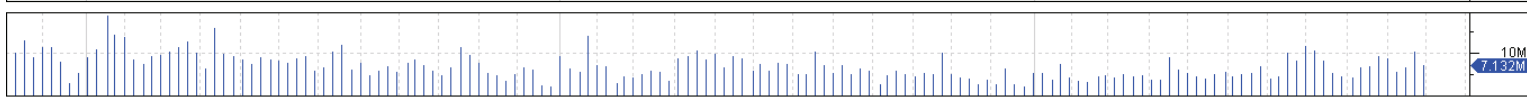
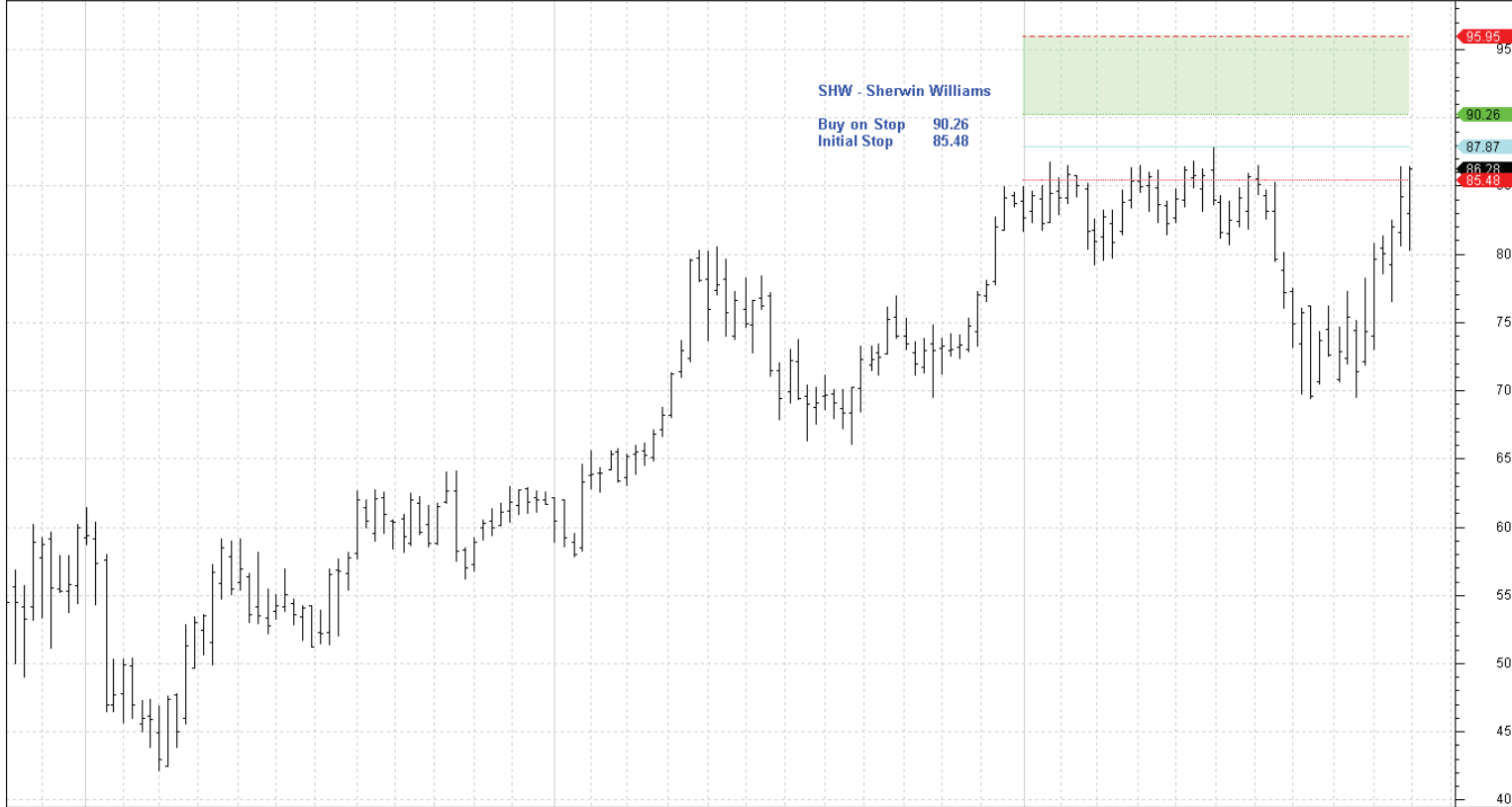
Nov Dec Jan Feb Mar Apr May Jun Jul Aug Sep Oct Nov Dec Jan Feb Mar Apr May Jun Jul Aug Sep Oct Nov  
 2008 2009 2010 2011



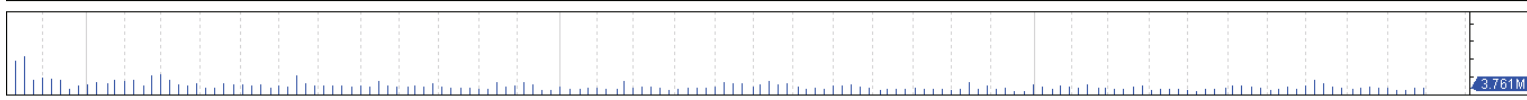
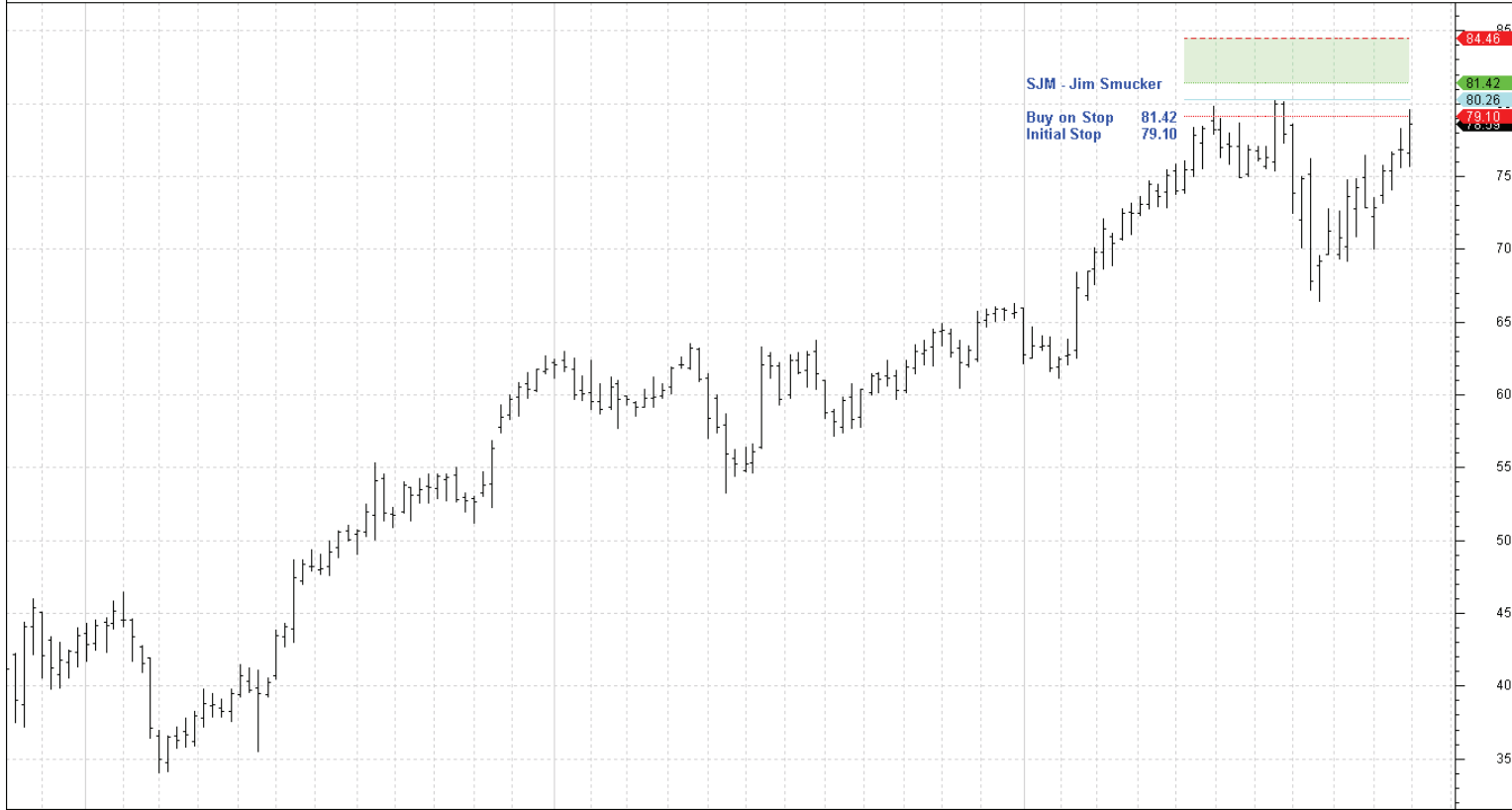
Nov Dec Jan Feb Mar Apr May Jun Jul Aug Sep Oct Nov Dec Jan Feb Mar Apr May Jun Jul Aug Sep Oct Nov  
 2008 2009 2010 2011



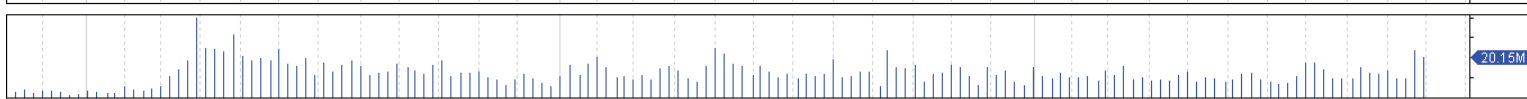
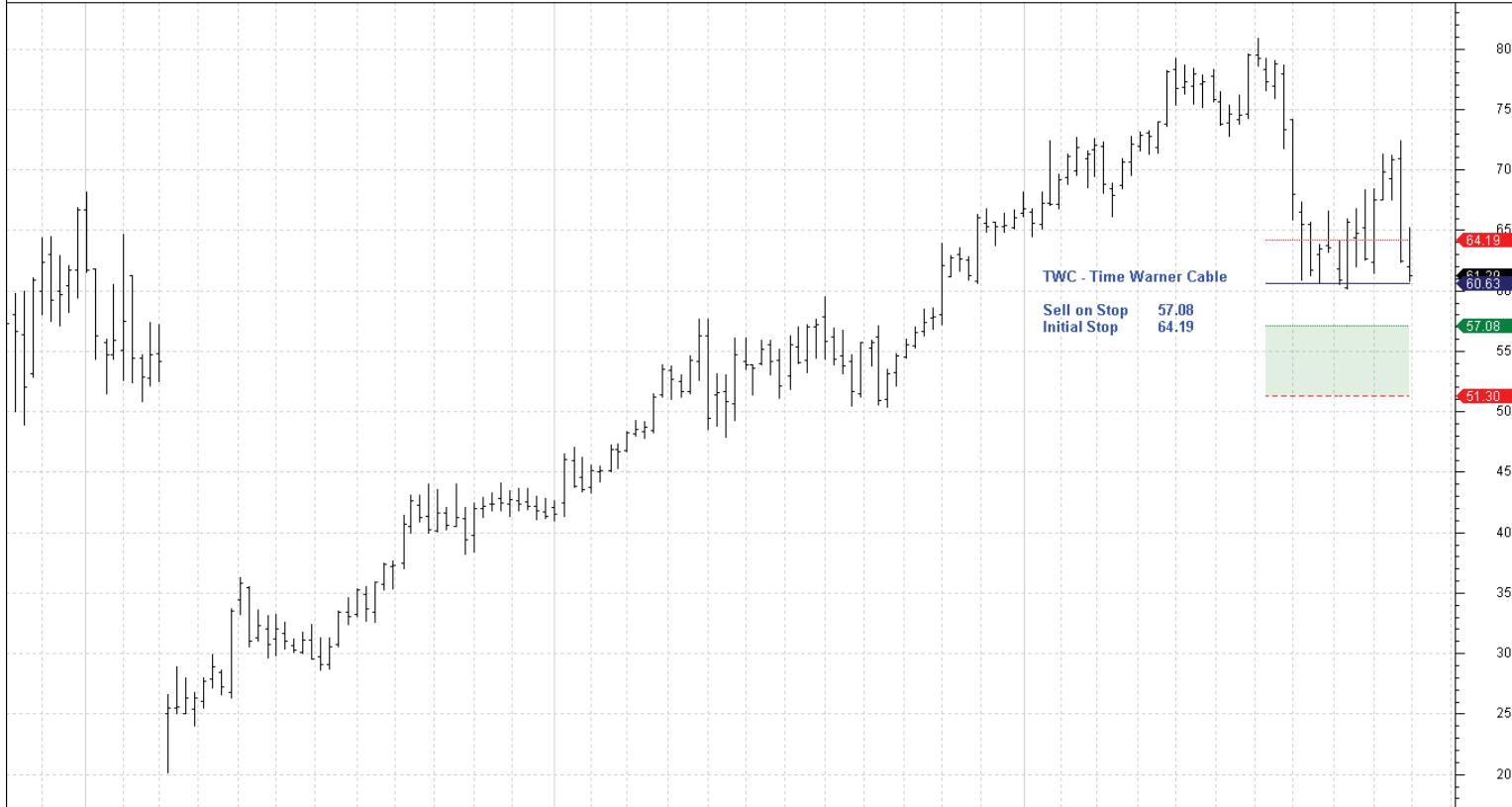
Nov Dec Jan Feb Mar Apr May Jun Jul Aug Sep Oct Nov Dec Jan Feb Mar Apr May Jun Jul Aug Sep Oct Nov  
2008 2009 2010 2011



Nov Dec Jan Feb Mar Apr May Jun Jul Aug Sep Oct Nov Dec Jan Feb Mar Apr May Jun Jul Aug Sep Oct Nov  
2008 2009 2010 2011



Nov Dec Jan Feb Mar Apr May Jun Jul Aug Sep Oct Nov Dec Jan Feb Mar Apr May Jun Jul Aug Sep Oct Nov  
2008 2009 2010 2011



Nov Dec Jan Feb Mar Apr May Jun Jul Aug Sep Oct Nov Dec Jan Feb Mar Apr May Jun Jul Aug Sep Oct Nov  
2008 2009 2010 2011