

Week Ending 20<sup>th</sup> July 2012

There are 6 potential opportunities for NYSE for the coming week.

Have a great week all

## New York Stock Exchange

### Currency – USD\$

Entries: Fidelity National Info Sys

Exits: Fidelity National Info Sys, VF Corporation

The colour coding we are currently using is as follows:

Amended orders or stops

Retained Orders or stops – no change

New working orders

Immediate action required

Short Sell

### Open Positions

Stops:	Code	Old	Action	New
--------	------	-----	--------	-----

### Amended

Abbott Labs	ABT	62.21	Amend	62.74
CMS Energy	CMS	22.95	Amend	23.05
Computer Science	CSC	26.19	Amend	25.50
Integrus Energy Group	TEG	53.89	Amend	55.54

### Retained

Alcoa	AA	9.131	Retain	9.131
Centerpoint Energy	CNP	20.05	Retain	20.05
DTE Energy	DTE	57.28	Retain	57.28
Edison International	EIX	43.83	Retain	43.83
Health Care Retail	HCN	56.69	Retain	56.69
Scana Corp	SCG	46.21	Retain	46.21
Sherwin Williams	SHW	113.6	Retain	113.6

Tiffany & Co	TUF	55.11	Retain	55.11
Ventas Inc	VTR	60.68	Retain	60.68
XCEL Energy	XEL	27.62	Retain	27.62
Duke Energy	DUK	22.29	Retain	22.29

Duke Energy merged, and the price was adjusted according to a formula determined during this merger. Stops on Duke were not automatically adjusted and were left in the existing positions. I know some people multiplied their stop values by 3 which was the approximate multiple of the original share price, these stops were hit and executed.

Because we don't trade equities any more, we did not have a position open and therefore are not notified of the changes at the time, as were existing position holders, and so were unaware of the situation until the end of week last week.

The data has still not been adjusted, and we are following this up again this week, and have been assured that the data will be clean again by end next week. Can anyone who still has a position in Duke Energy, please advise and we will run a separate trailing stop strategy for you until this stock exits, based on the new value on the share?

## Cancelled Orders

Allstate Corporation, McGraw Hill, Republic Services

## Working Orders

Company	Code	Direction	Entry	Stop
---------	------	-----------	-------	------

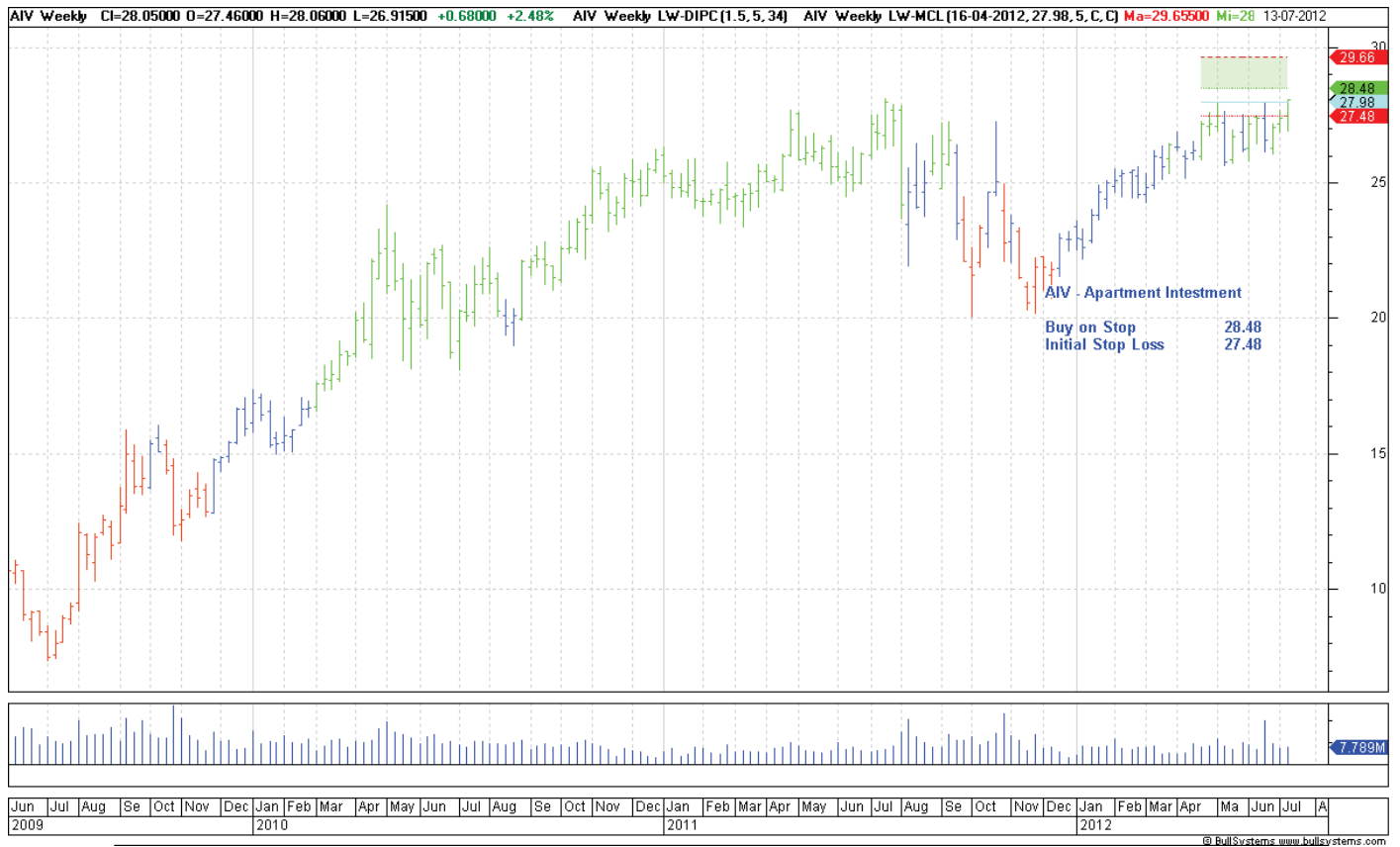
## Amended

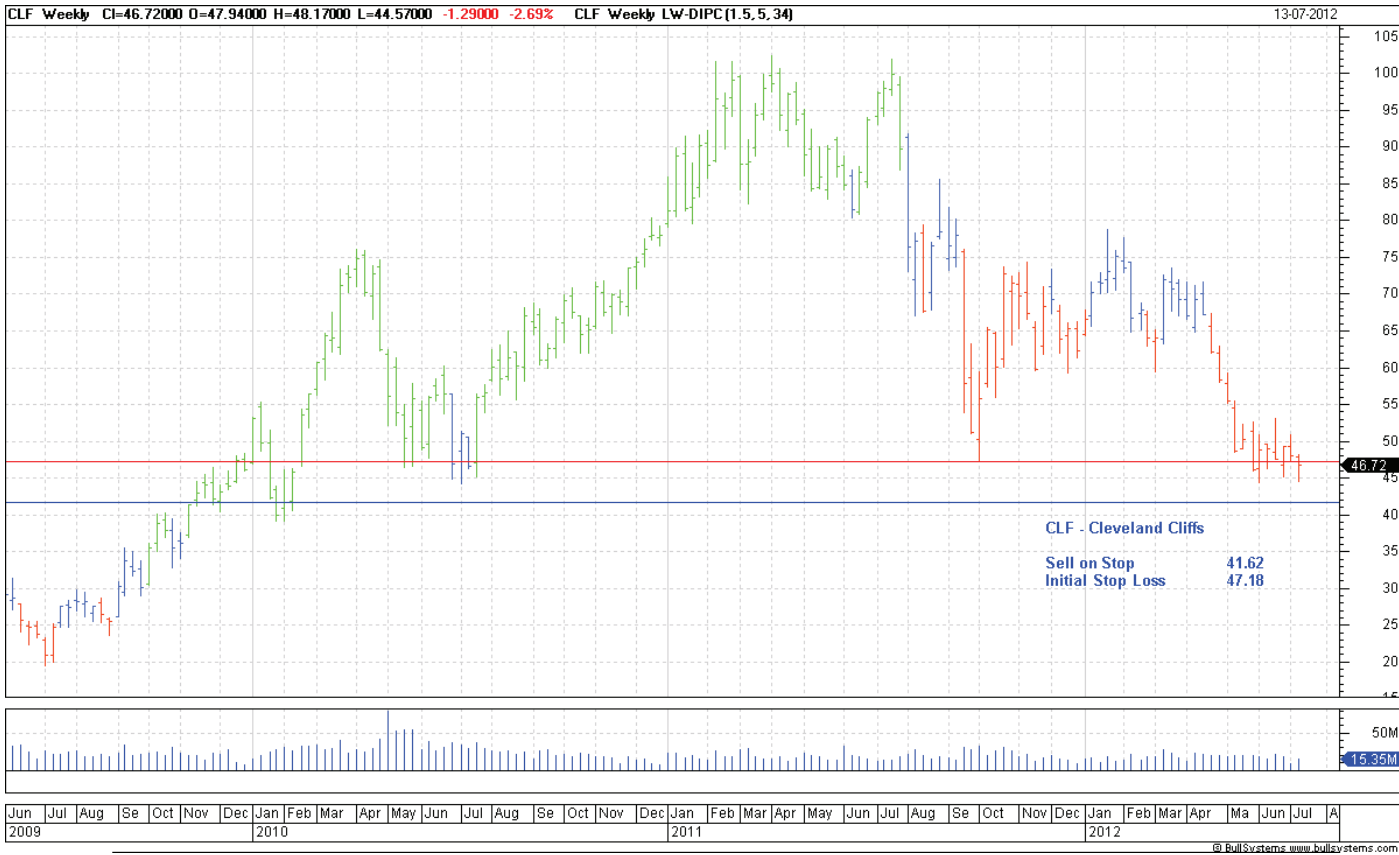
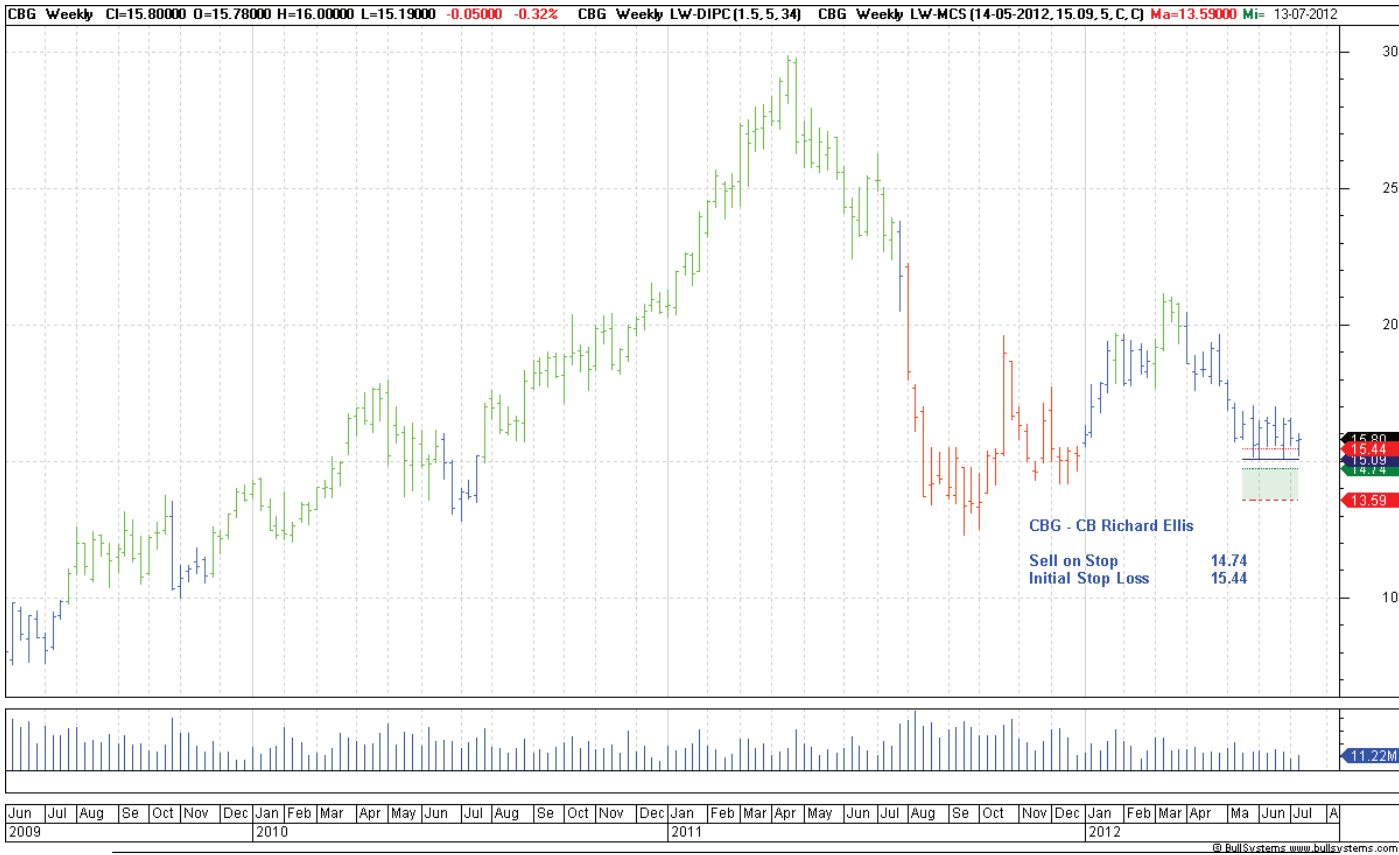
## Retained

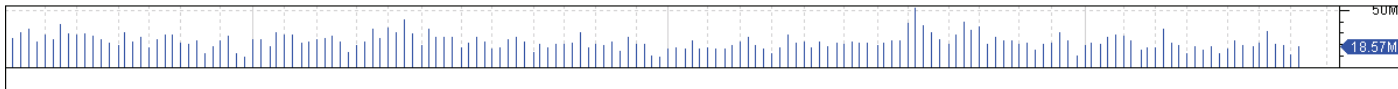
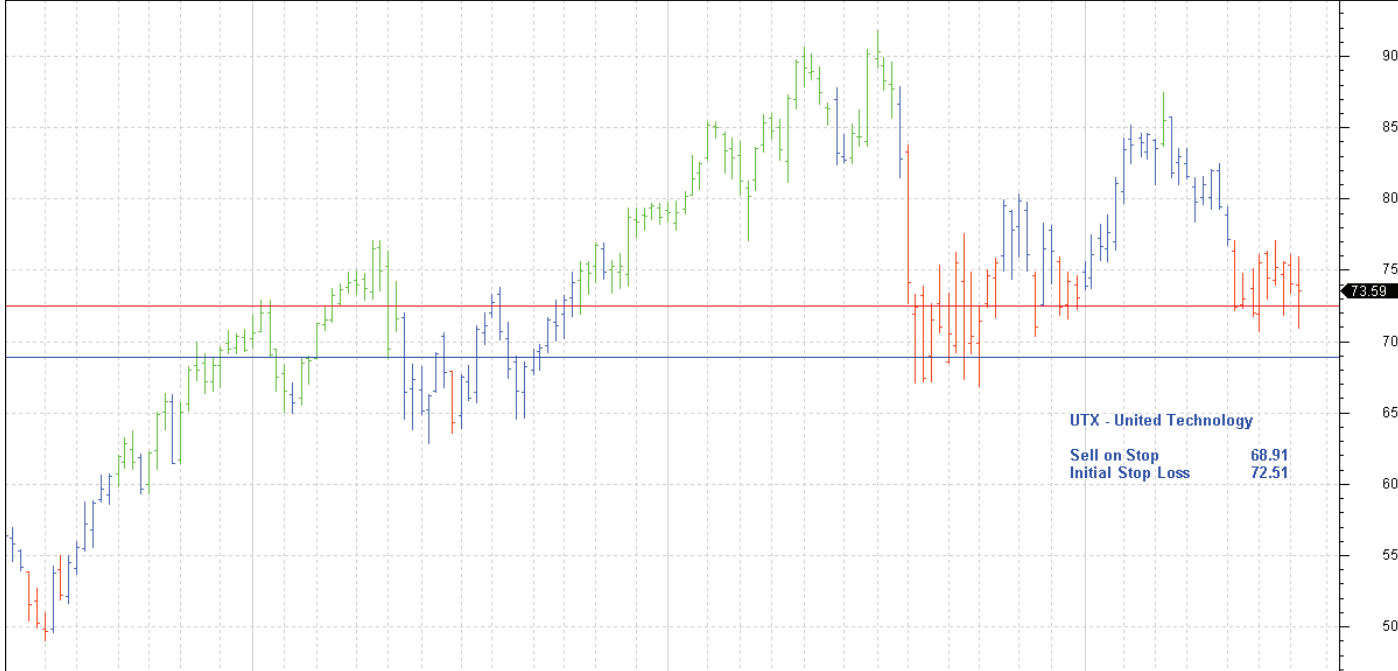
## New

Apartment Investment	AIV	Buy	28.48	27.48
Boston Scientific	BSX	Sell	5.358	5.60
CB Richard Ellis	CBG	Sell	14.74	15.44
Cleveland Cliffs	CLF	Sell	41.62	47.18
United Technology	UTX	Sell	68.91	72.51
Xcel Energy	XEL	Buy	29.60	28.64

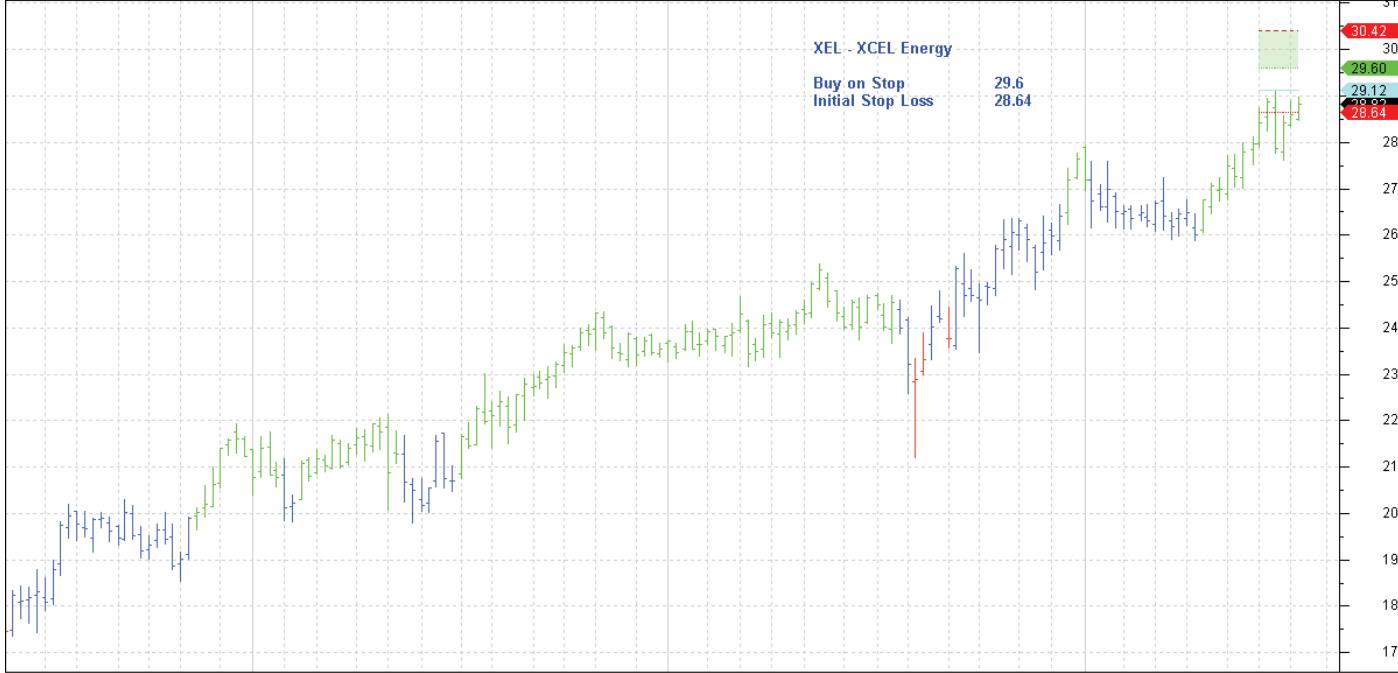
# Charts







Jun	Jul	Aug	Se	Oct	Nov	Dec	Jan	Feb	Mar	Apr	May	Jun	Jul	Aug	Se	Oct	Nov	Dec	Jan	Feb	Mar	Apr	May	Jun	Jul	Aug	Se	Oct	Nov	Dec	Jan	Feb	Mar	Apr	Ma	Jun	Jul	A
2009							2010												2011																			



Jun	Jul	Aug	Se	Oct	Nov	Dec	Jan	Feb	Mar	Apr	May	Jun	Jul	Aug	Se	Oct	Nov	Dec	Jan	Feb	Mar	Apr	Ma	Jun	Jul	A																																																																																																																																																																																																																																																																																																																																																																																																																																																																																																																																																																																																																																																																																																																																																																																																																																																																																																																																																																																																																																																																																																																																																																																																																																																																																																																																																																								
2009							2010												2011																																																																																																																																																																																																																																																																																																																																																																																																																																																																																																																																																																																																																																																																																																																																																																																																																																																																																																																																																																																																																																																																																																																																																																																																																																																																																																																																																																															</