

Hello everyone,

The US market has risen overall this week and we have had one exit – NYSE Group

Have a great week all

## NYSE

Entries:

Exits: NYSE Group

The colour coding we are currently using is as follows:

Amended orders or stops

Retained Orders or stops – no change

New working orders

Immediate action required

Short Sell

Currency – USD\$

## Open Positions

---

Stops:		Old	Action	New
<b><u>Amended</u></b>				
US Steel Corp	X	\$27.15	Amend	\$25.45

## **Retained**

Fidelity National	FIS	\$26.785	Retain	\$26.785
EOG Resources	EOG	\$85.99	Retain	\$85.99
Regions Fing	RF	\$4.02	Retain	\$4.02

## Cancelled Orders

## Working Orders

Company	Code	Direction	Entry	Stop
American Electric Power	AEP	Buy	39.43	38.55
Exxon Mobil	XOM	Buy	78.15	71.81
Lorillard Incorporated	LO	Buy	121	112.8
Lowe's	LOW	Buy	21.38	19.96
PP & L Inc	PPL	Buy	\$29.45	\$28.67
State Street	STT	Sell	\$29.49	\$33.21

## Retained

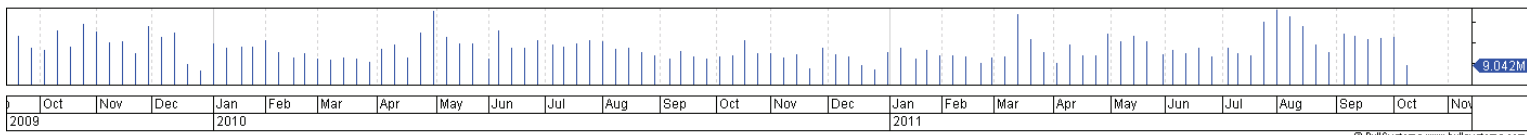
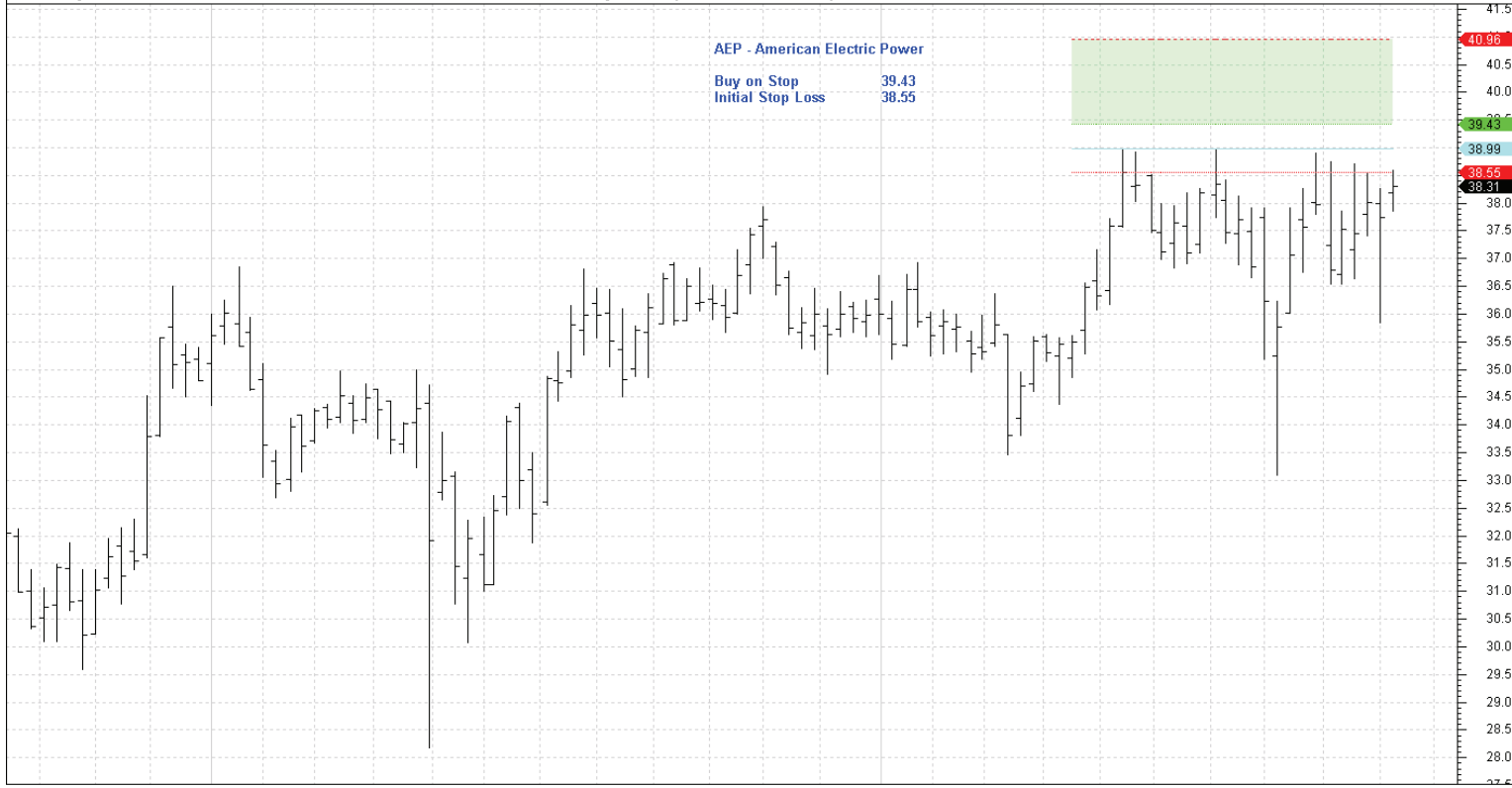
### Futures

Nil

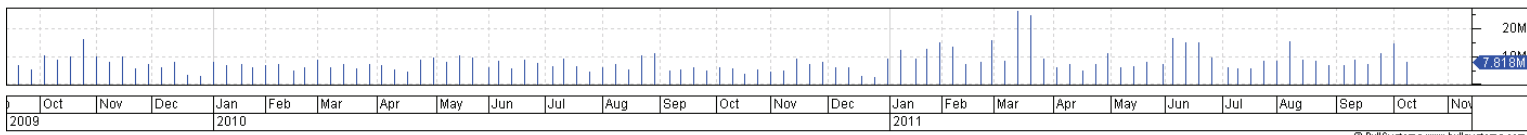
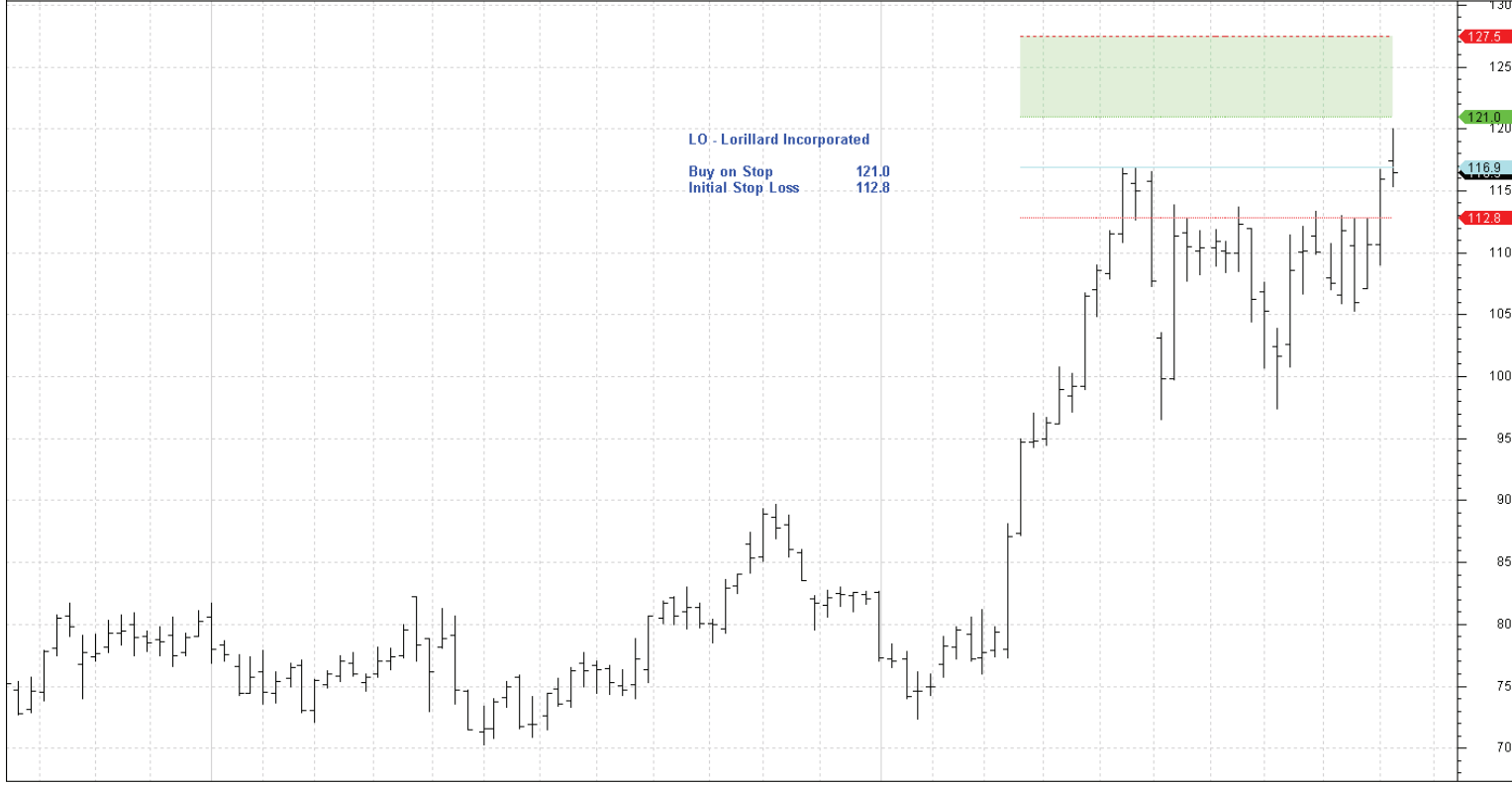
### New

Nil

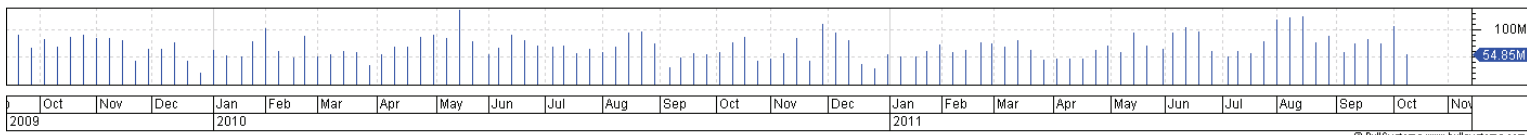
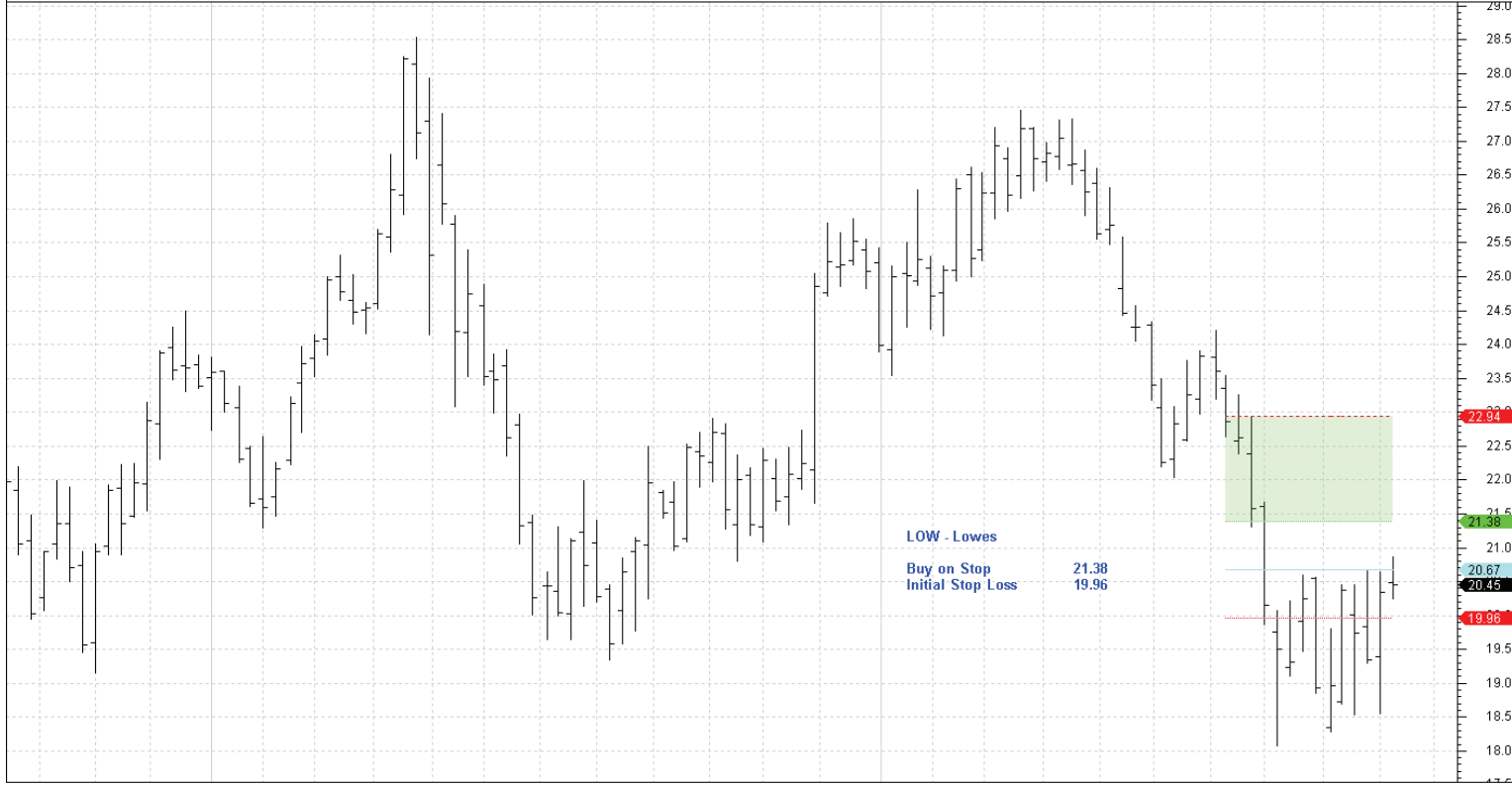
See below for charts



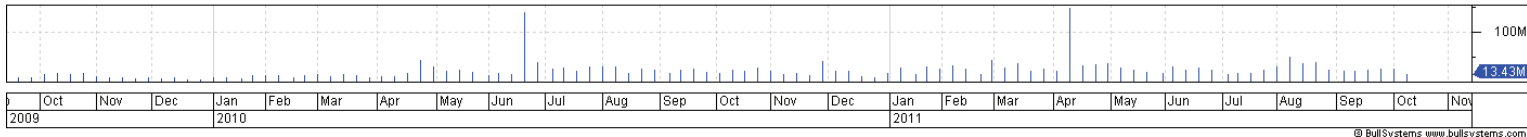
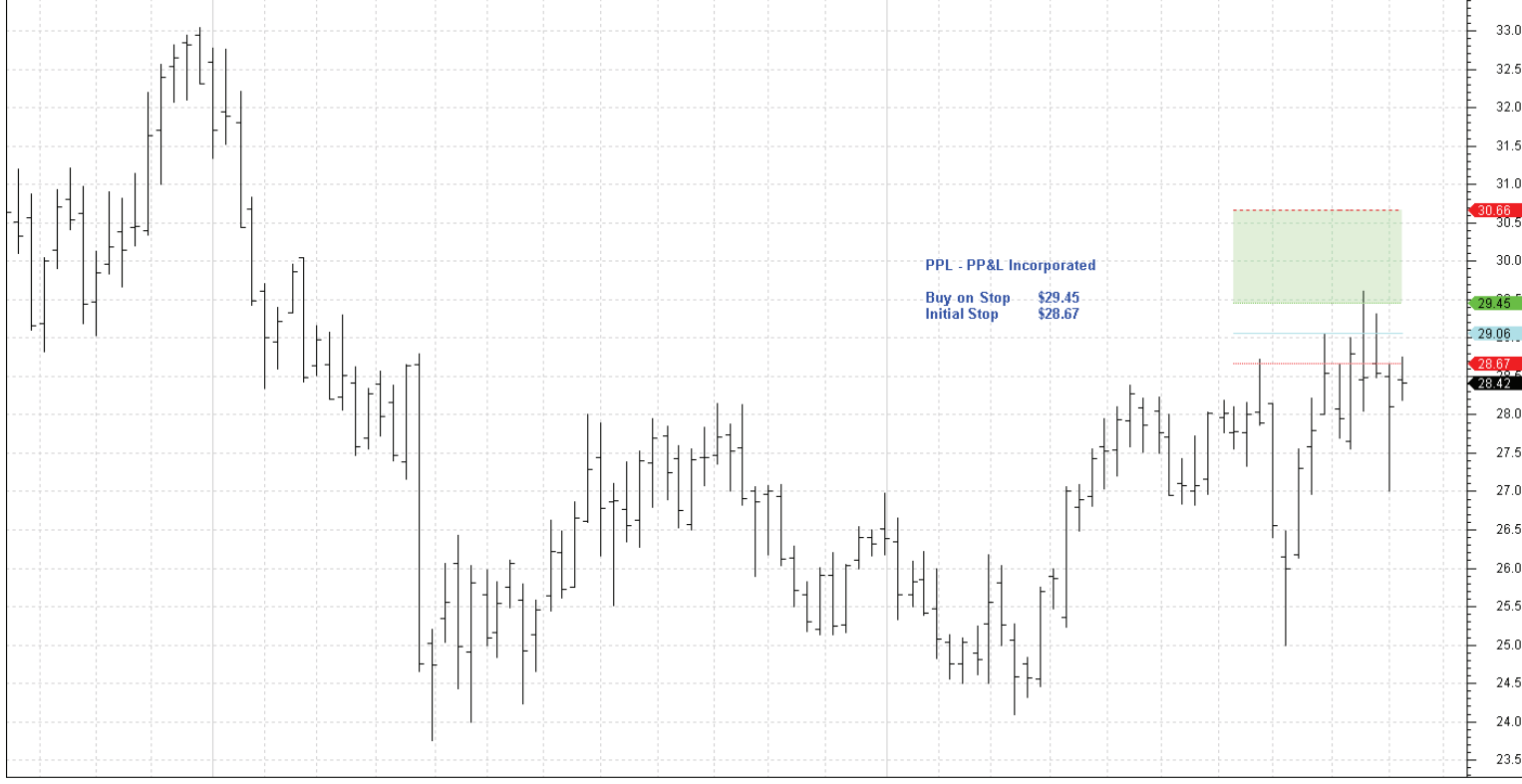
Oct Nov Dec Jan Feb Mar Apr May Jun Jul Aug Sep Oct Nov Dec Jan Feb Mar Apr May Jun Jul Aug Sep Oct Nov  
 2009 2010 2011



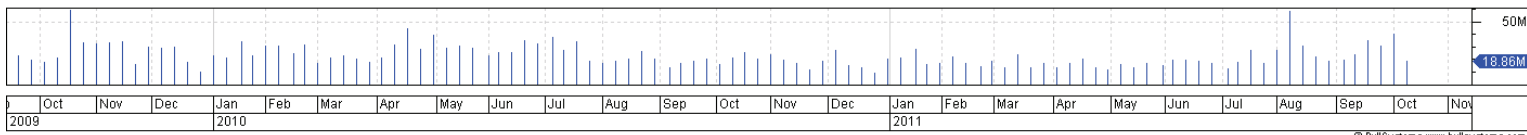
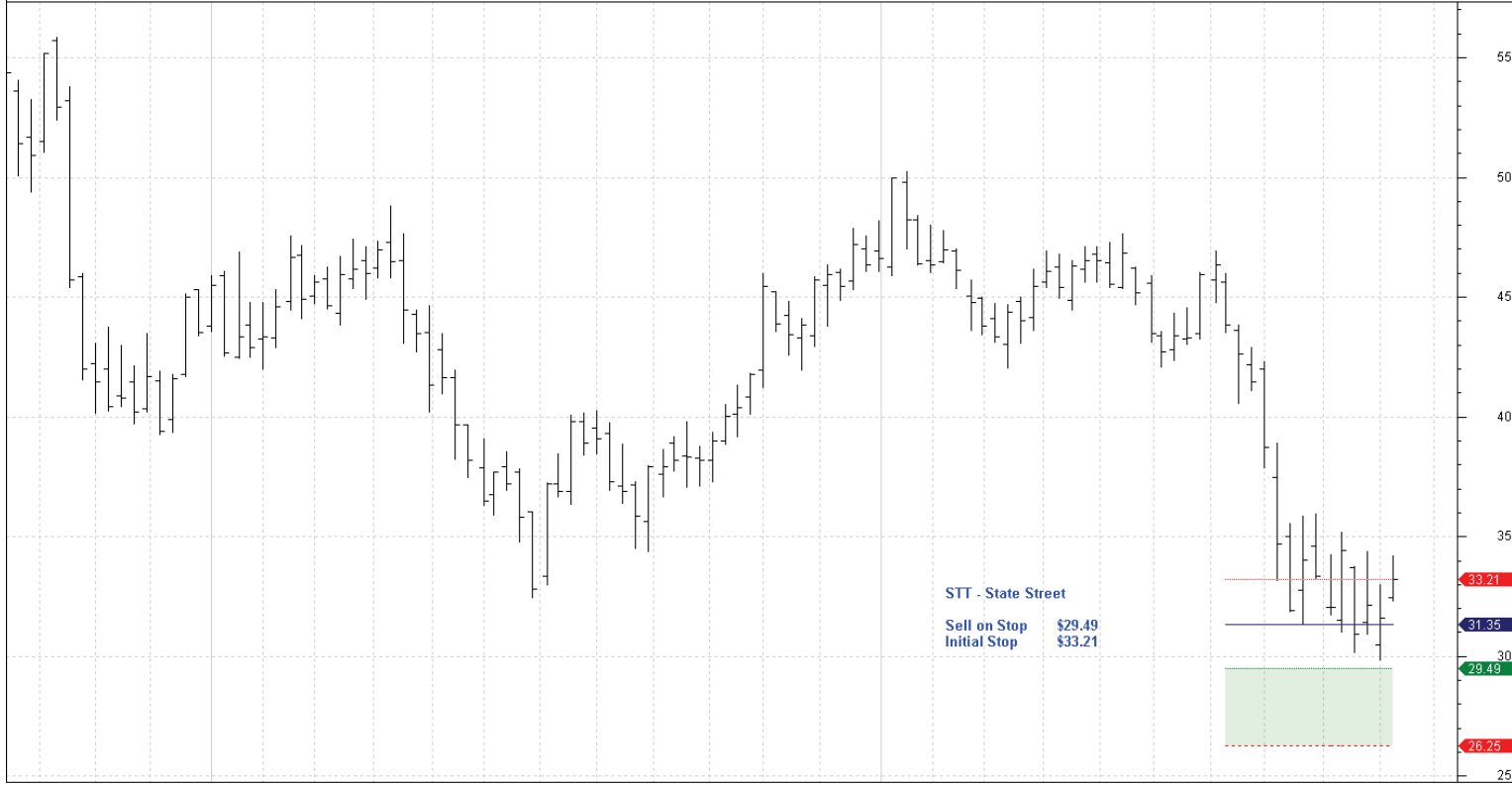
Oct Nov Dec Jan Feb Mar Apr May Jun Jul Aug Sep Oct Nov Dec Jan Feb Mar Apr May Jun Jul Aug Sep Oct Nov  
 2009 2010 2011



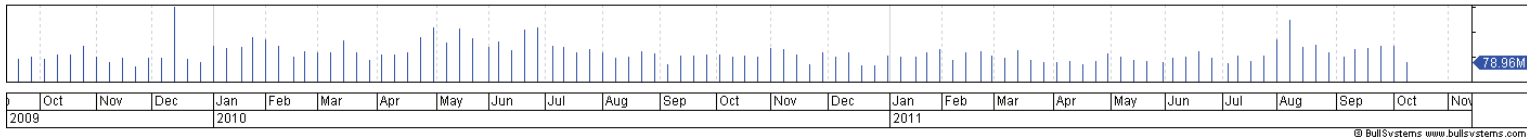
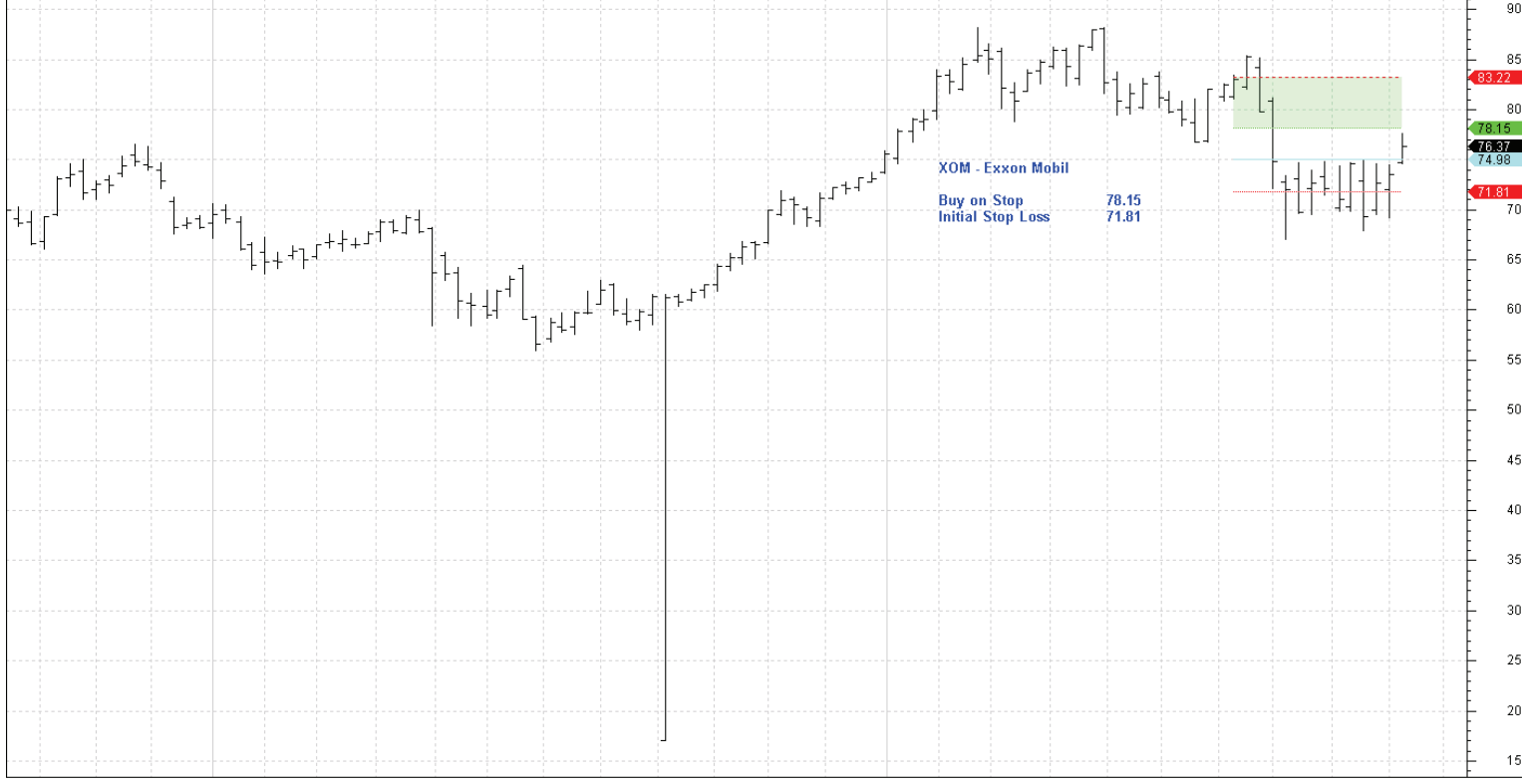
Oct Nov Dec 2009 Jan Feb Mar Apr May Jun Jul Aug Sep Oct Nov Dec 2010 Jan Feb Mar Apr May Jun Jul Aug Sep Oct Nov 2011



Oct Nov Dec 2009 Jan Feb Mar Apr May Jun Jul Aug Sep Oct Nov Dec 2010 Jan Feb Mar Apr May Jun Jul Aug Sep Oct Nov 2011



Oct Nov Dec Jan Feb Mar Apr May Jun Jul Aug Sep Oct Nov Dec Jan Feb Mar Apr May Jun Jul Aug Sep Oct Nov  
 2009 2010 2011



Oct Nov Dec Jan Feb Mar Apr May Jun Jul Aug Sep Oct Nov Dec Jan Feb Mar Apr May Jun Jul Aug Sep Oct Nov  
 2009 2010 2011