

## Week Ending 30<sup>th</sup> December, 2011

The US markets saw significant rises this week and resulted in 6 entries, 1 of which spun around and stopped out the same week. The week also saw good increases in prices of the open positions also

Have a great week all

## New York Stock Exchange

### Currency – USD\$

Entries: American Electric Power, Cablevision, DTE Energy, Scana Corporation, Sherwin Williams, Xcel Energy

Exits: Cablevision

The colour coding we are currently using is as follows:

Amended orders or stops

Retained Orders or stops – no change

New working orders

Immediate action required

Short Sell

### Open Positions

Stops:	Code	Old	Action	New
<b><u>Amended</u></b>				
Lowes	LOW	22.37	Retain	23.60
Philip Morris	PM	71.35	Amend	72.40

### **Retained**

American Electric	AEP	39.11	Retain	39.11
Exxon Mobil	XOM	75.16	Retain	75.16
DTE Energy	DTE	51.57	Retain	51.57
Scana Corporation	SCG	42.28	Retain	42.28
Sherwin Williams	SHW	86.24	Retain	86.24

Xcel EnergyXEL25.89Retain25.89

Cancelled Orders

Nil

Working Orders

CompanyCodeDirectionEntryStop

Amended

Constellation Energy	CEG	Buy	41.06	39.38
Cigna	CI	Sell	39.29	41.19
General Mills	GIS	Buy	41.06	39.44
Pfizer	PFE	Buy	22.304	20.56
JM Smucker	SJM	Buy	81.93	78.59
Yum Brands	YUM	Buy	59.34	56.16

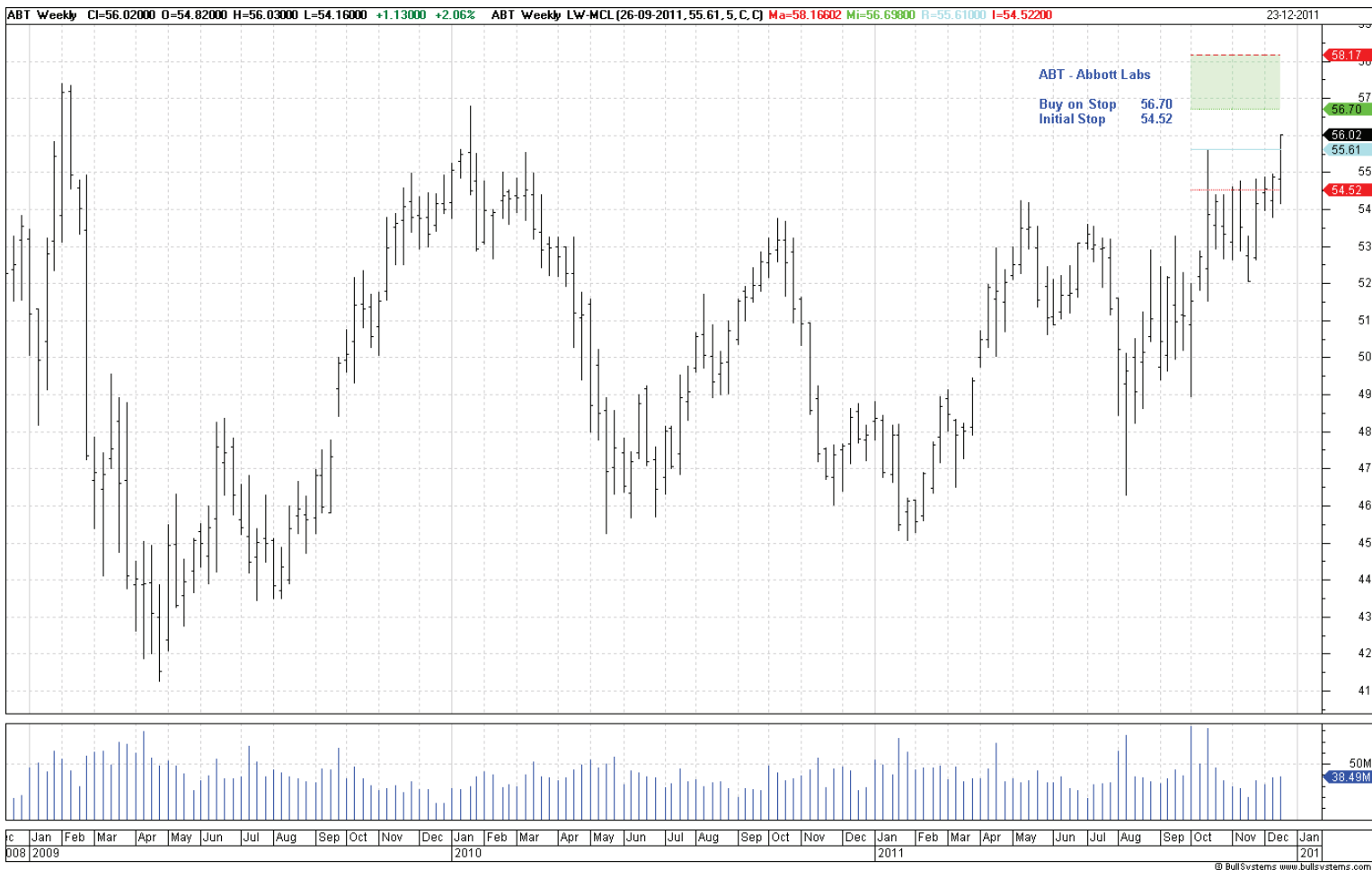
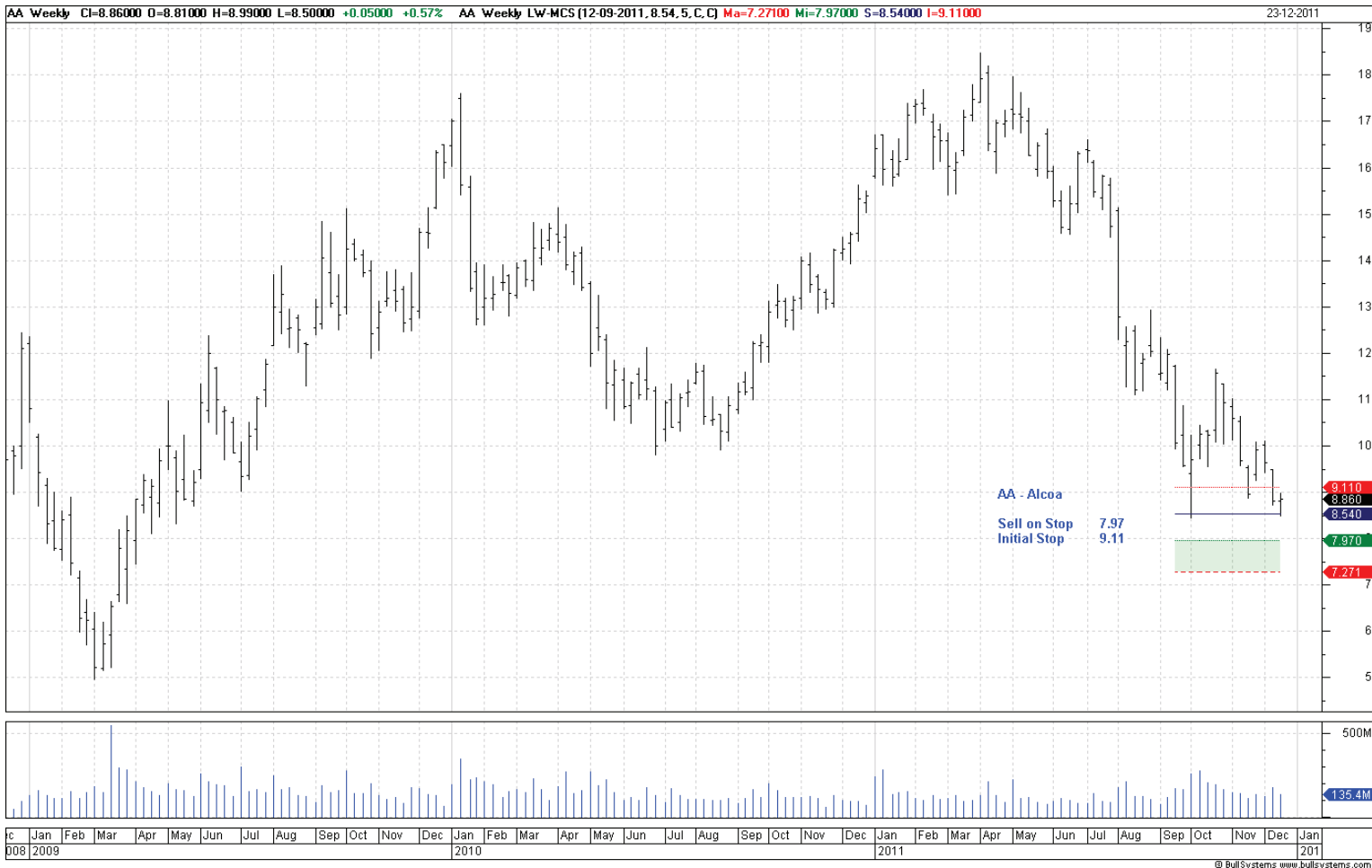
Retained

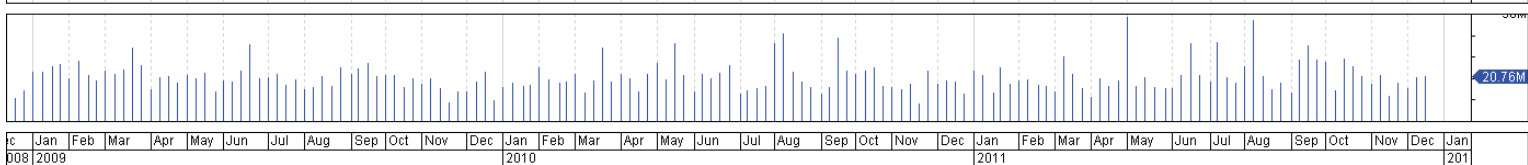
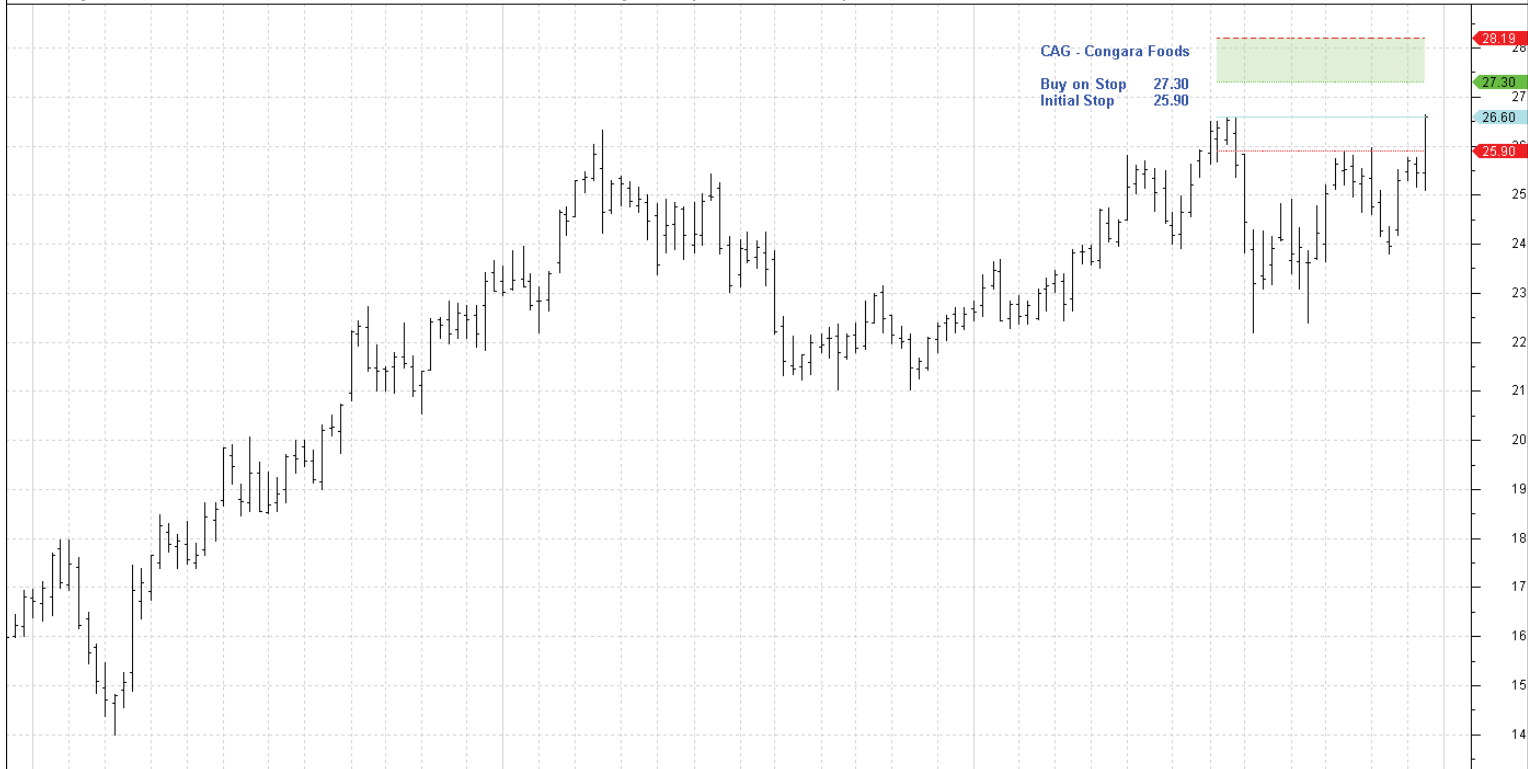
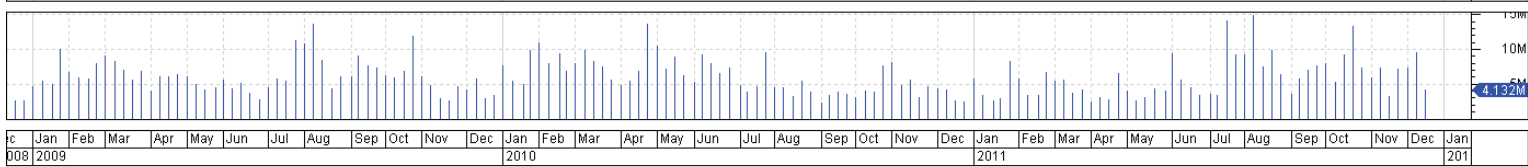
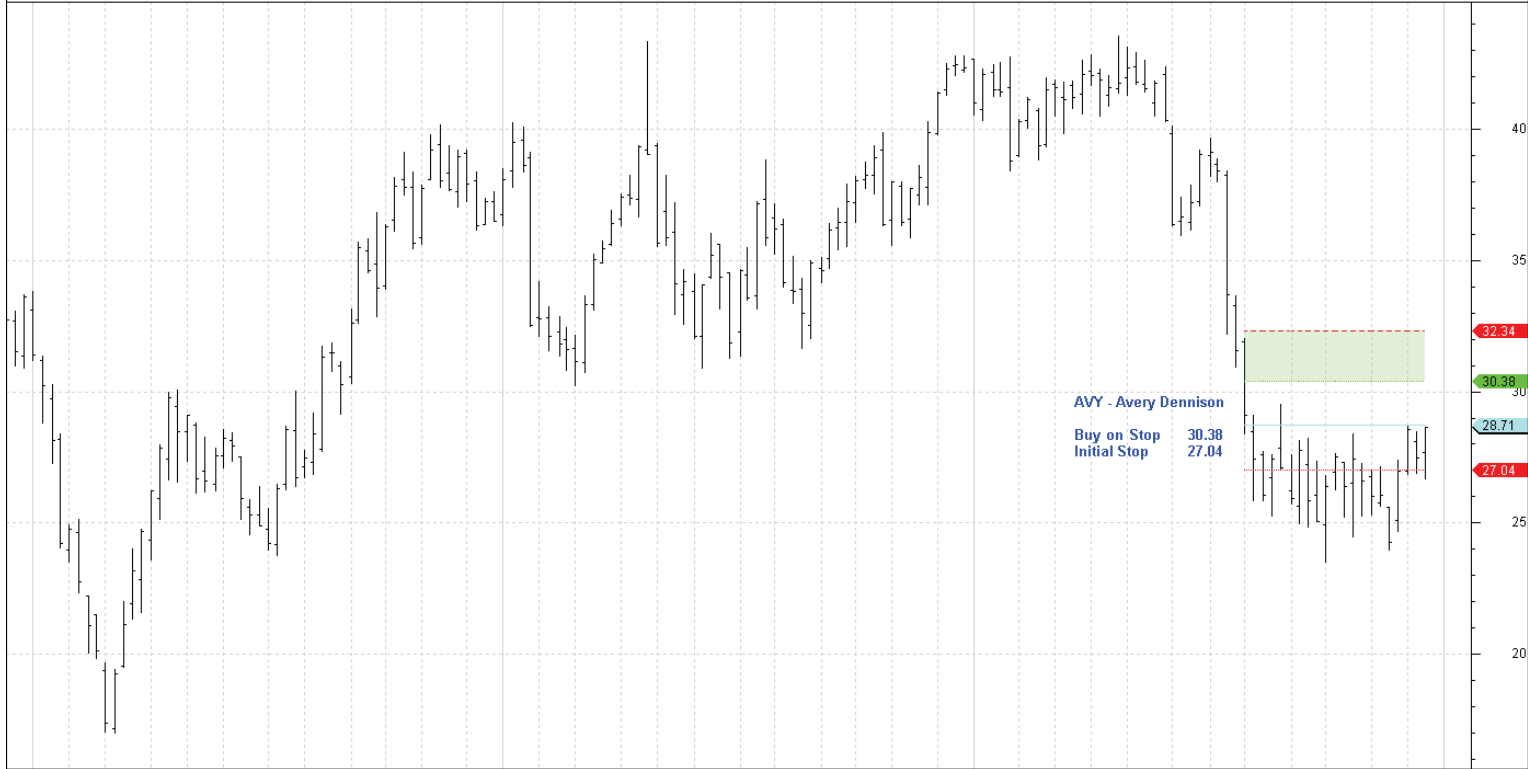
Nil

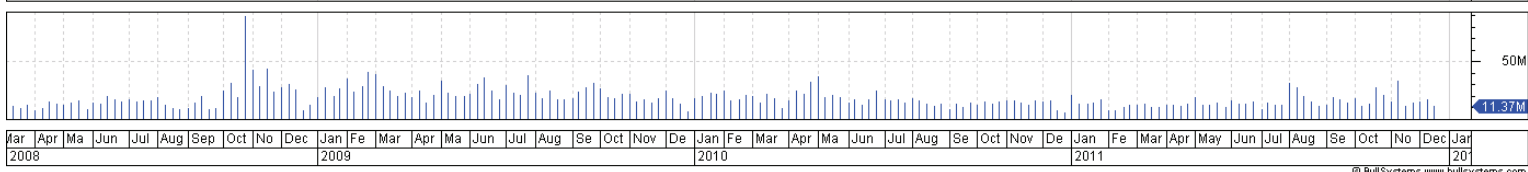
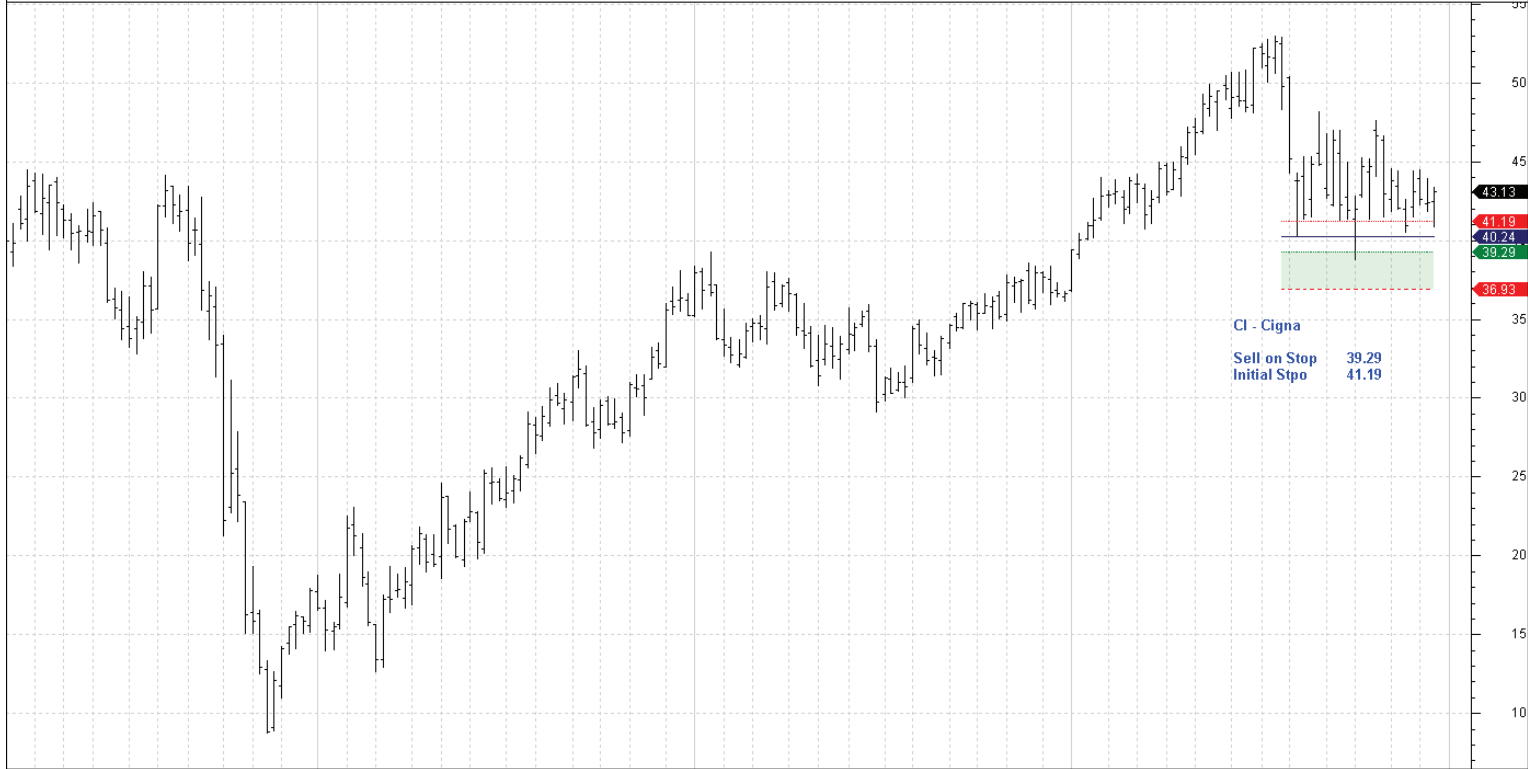
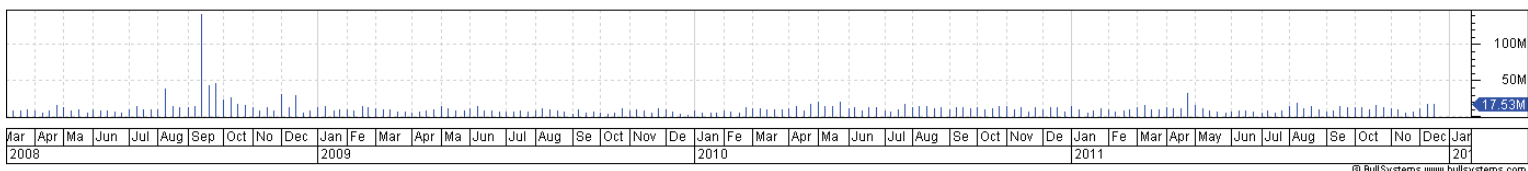
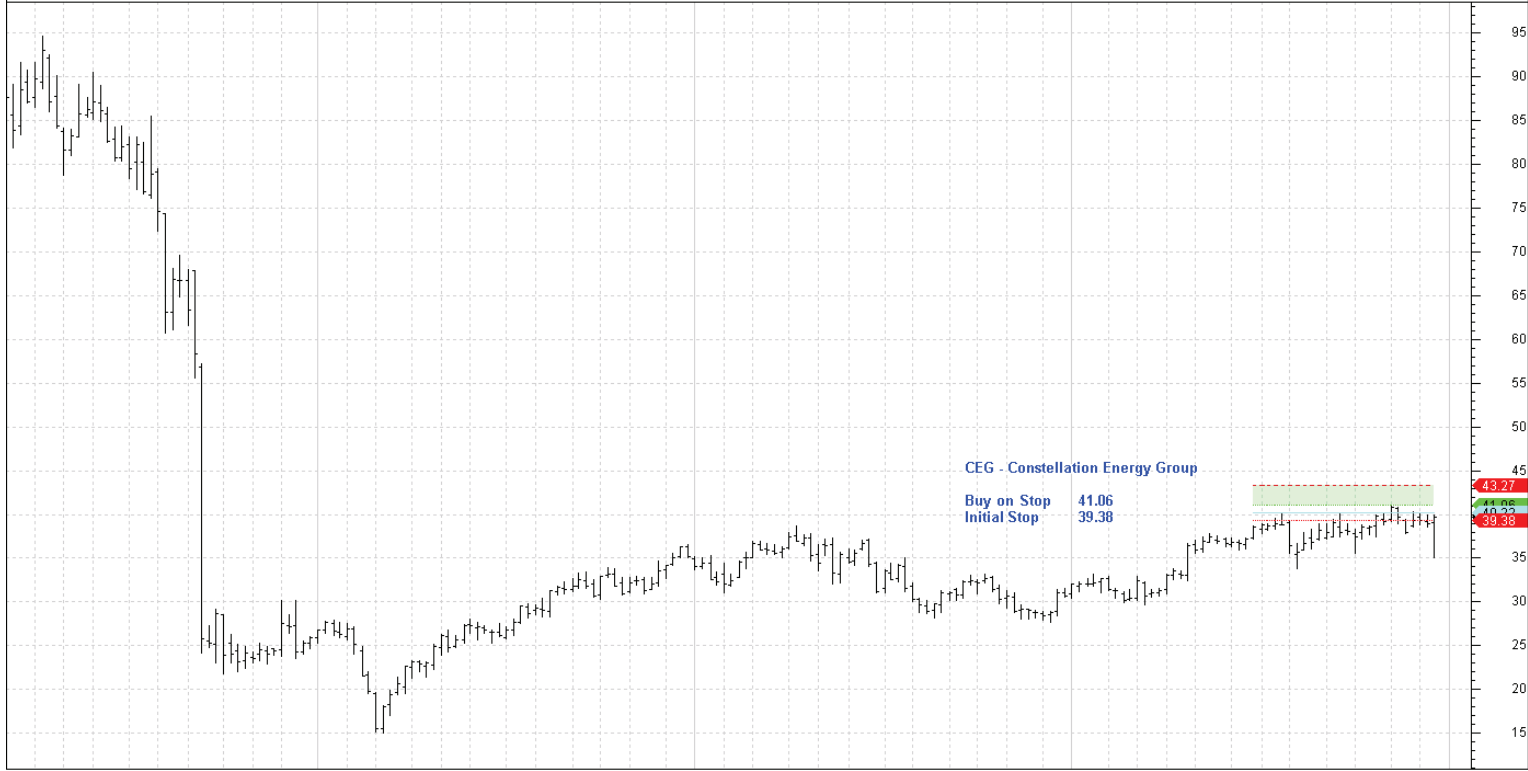
New

Alcoa	AA	Sell	7.97	9.11
Abbott Labs	ABT	Buy	56.70	54.50
Avery Dennison	AVY	Buy	30.38	27.04
Congara Foods	CAG	Buy	27.30	25.90
Dominion Resources	D	Buy	53.72	51.64
Health Corp Prop	HCP	Buy	42.09	39.41
Hershey Foods	HSY	Buy	62.29	59.63
International Flavour & Frag	IFF	Sell	50.04	52.86
Kimberly Clark	KMB	Buy	74.76	71.70
Legg Mason	LM	Sell	20.93	24.29
Merc & Co	MRK	Buy	38.96	36.34
Pepco Holdings	POM	Buy	20.89	19.79
Integrys Energy Group	TEG	Buy	55.47	52.61
Water Corp	WAT	Sell	66.72	75.04

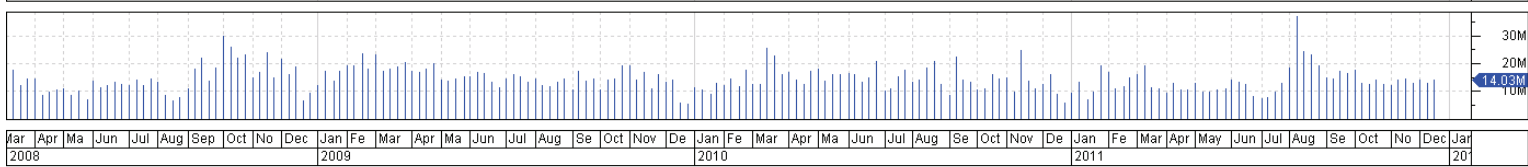
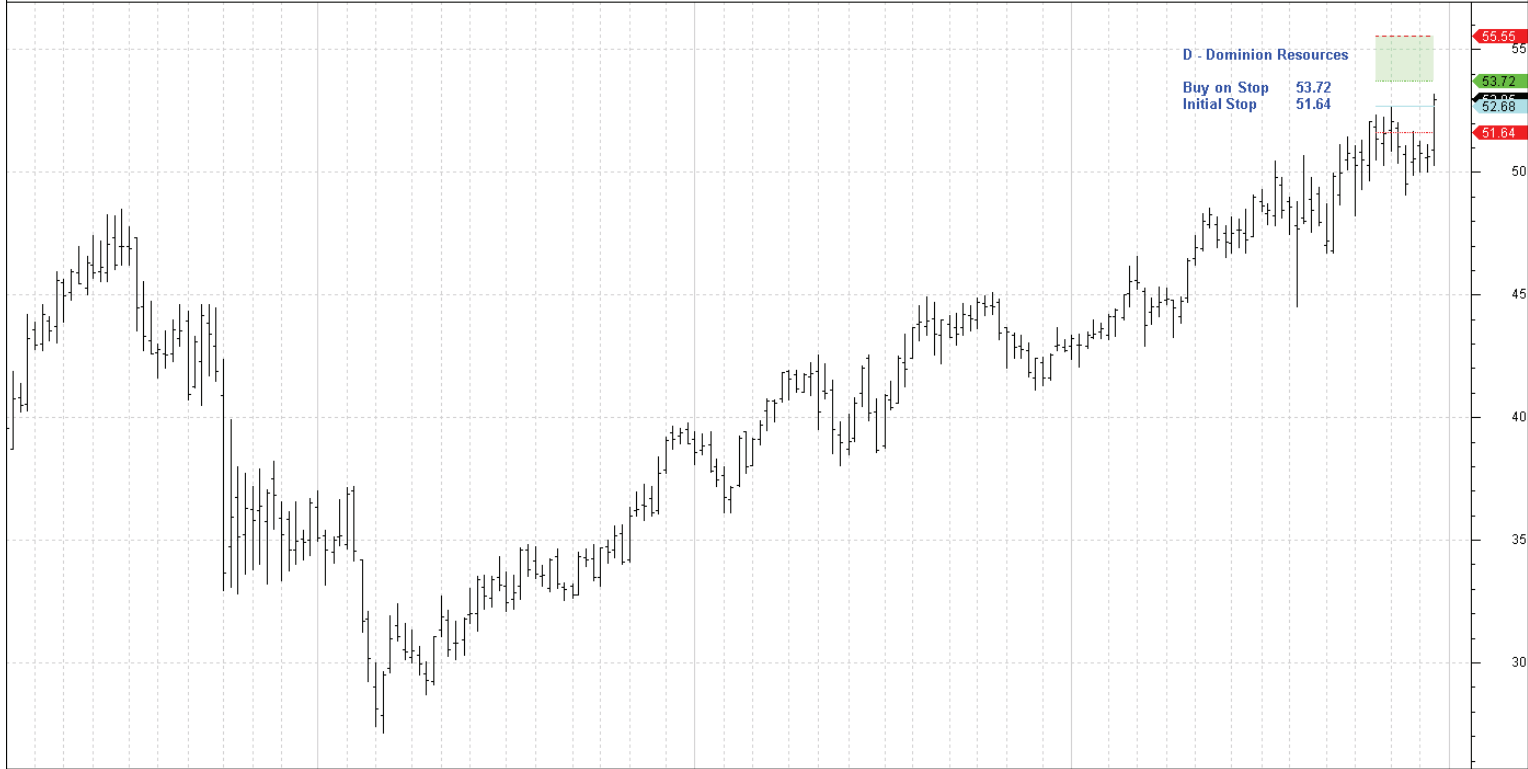
Charts





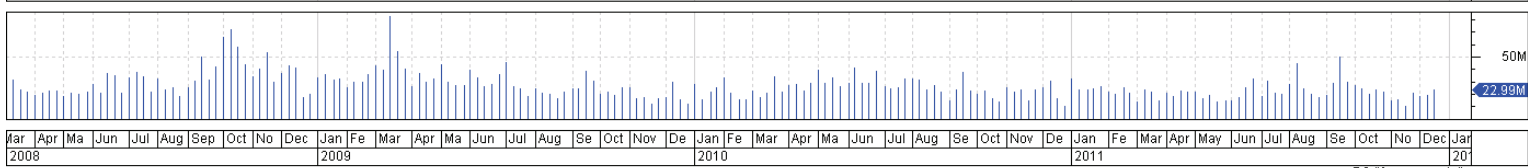
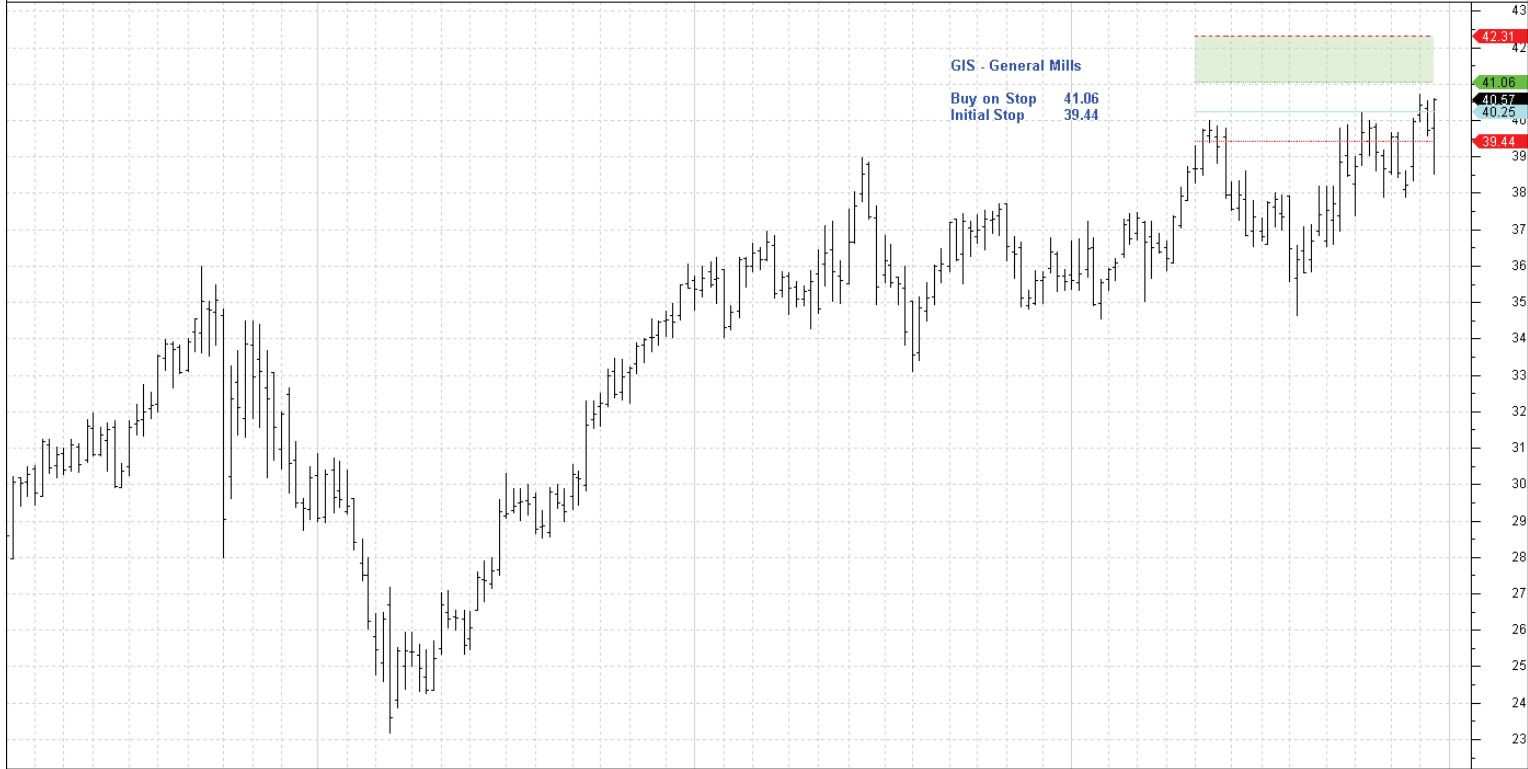


D Weekly CI=52.95000 O=50.91000 H=53.19000 L=50.27000 +2.30000 +4.54% D Weekly LW-MCL(17-10-2011,52.68,5,C,C) Ma=55.54600 Mi=53.72200 R=52.68000 I=51.63800 23-12-2011



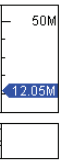
Mar Apr Ma Jun Jul Aug Sep Oct No Dec Jan Fe Mar Apr Ma Jun Jul Aug Se Oct Nov De Jan Fe Mar Apr Ma Jun Jul Aug Se Oct Nov De Jan Fe Mar Apr May Jun Jul Aug Se Oct No Dec Jan 2008 2009 2010 2011 2012 © BullSystems www.bullsystems.com

GIS Weekly CI=40.57000 O=39.79000 H=40.61000 L=38.52000 +0.85000 +2.14% GIS Weekly LW-MCL(25-04-2011,40.25,5,C,C) Ma=42.30800 Mi=41.06200 R=40.25000 I=39.43800 23-12-2011

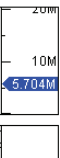
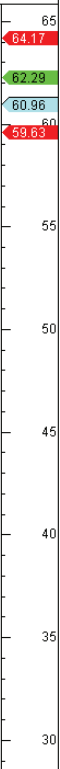


Mar Apr Ma Jun Jul Aug Sep Oct No Dec Jan Fe Mar Apr Ma Jun Jul Aug Se Oct Nov De Jan Fe Mar Apr Ma Jun Jul Aug Se Oct Nov De Jan Fe Mar Apr May Jun Jul Aug Se Oct No Dec Jan 2008 2009 2010 2011 2012 © BullSystems www.bullsystems.com

23-12-2011

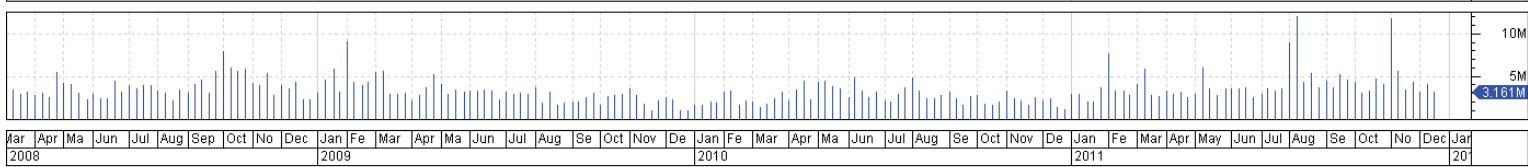
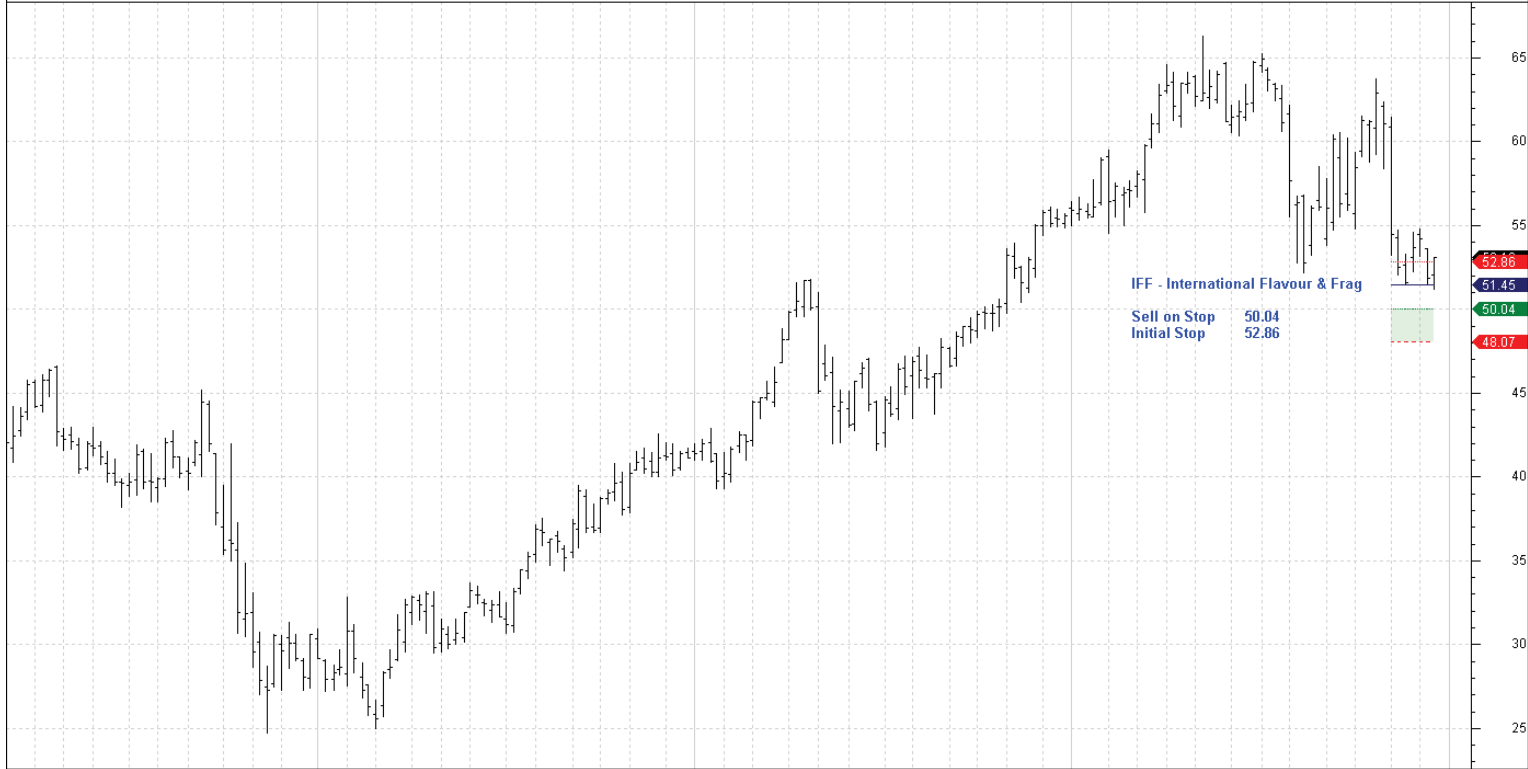


23-12-2011



© BullSystems [www.bullsystems.com](http://www.bullsystems.com)

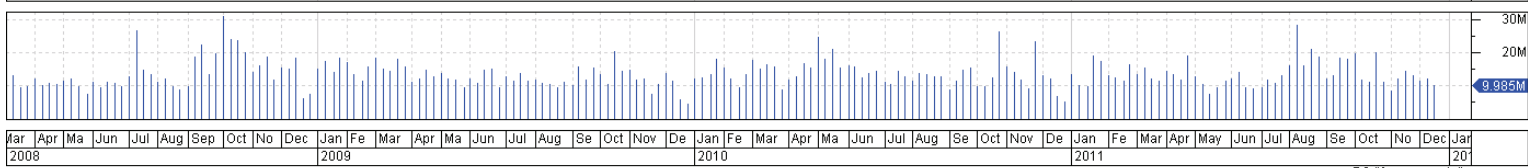
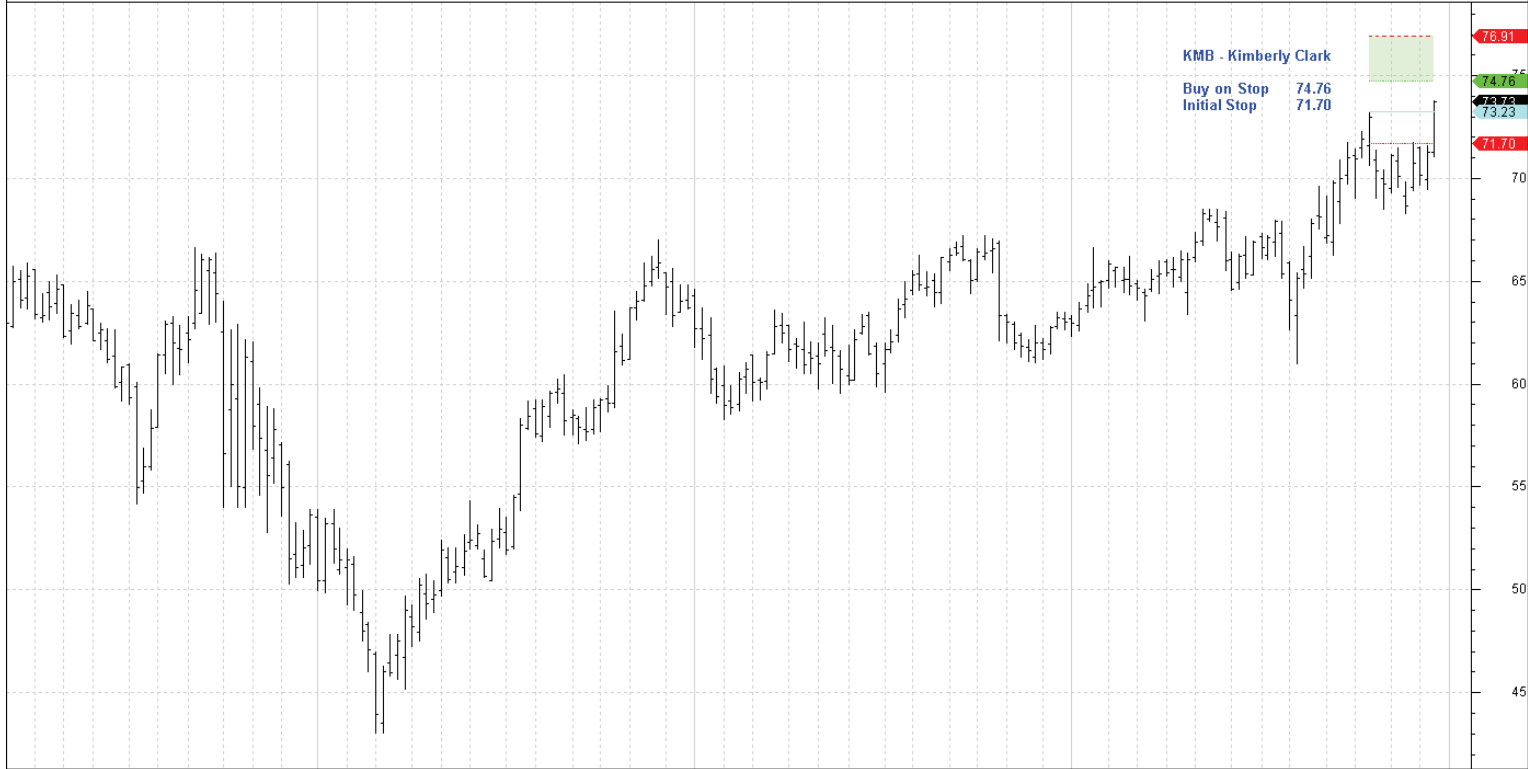
IFF Weekly Cl=53.13000 O=52.07000 H=53.13000 L=51.20000 +1.24000 +2.39% IFF Weekly LW-MCS (31-10-2011,51.45,5,C,C) Ma=48.06800 Mi=50.04200 S=51.45000 I=52.85800 23-12-2011



Mar Apr Ma Jun Jul Aug Sep Oct No Dec Jan Fe Mar Apr Ma Jun Jul Aug Se Oct Nov De Jan Fe Mar Apr Ma Jun Jul Aug Se Oct Nov De Jan Fe Mar Apr May Jun Jul Aug Se Oct No Dec Jan 2008 2009 2010 2011 2012

© BullSystems www.bullsystems.com

KMB Weekly Cl=73.73000 O=71.27000 H=73.76000 L=71.04000 +2.45000 +3.44% KMB Weekly LW-MCL (10-10-2011,73.23,5,C,C) Ma=76.90600 Mi=74.75600 R=73.23000 I=71.70400 23-12-2011

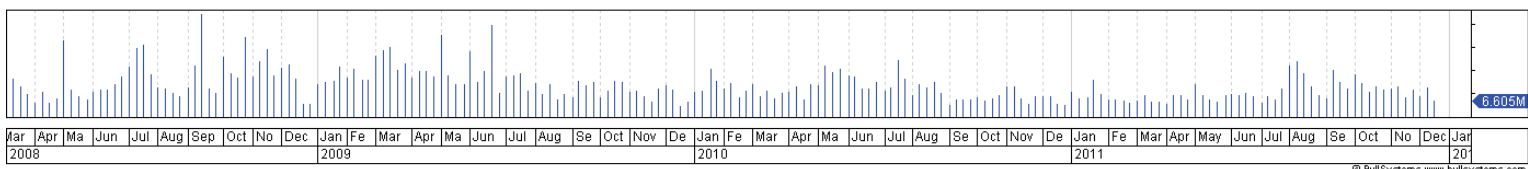
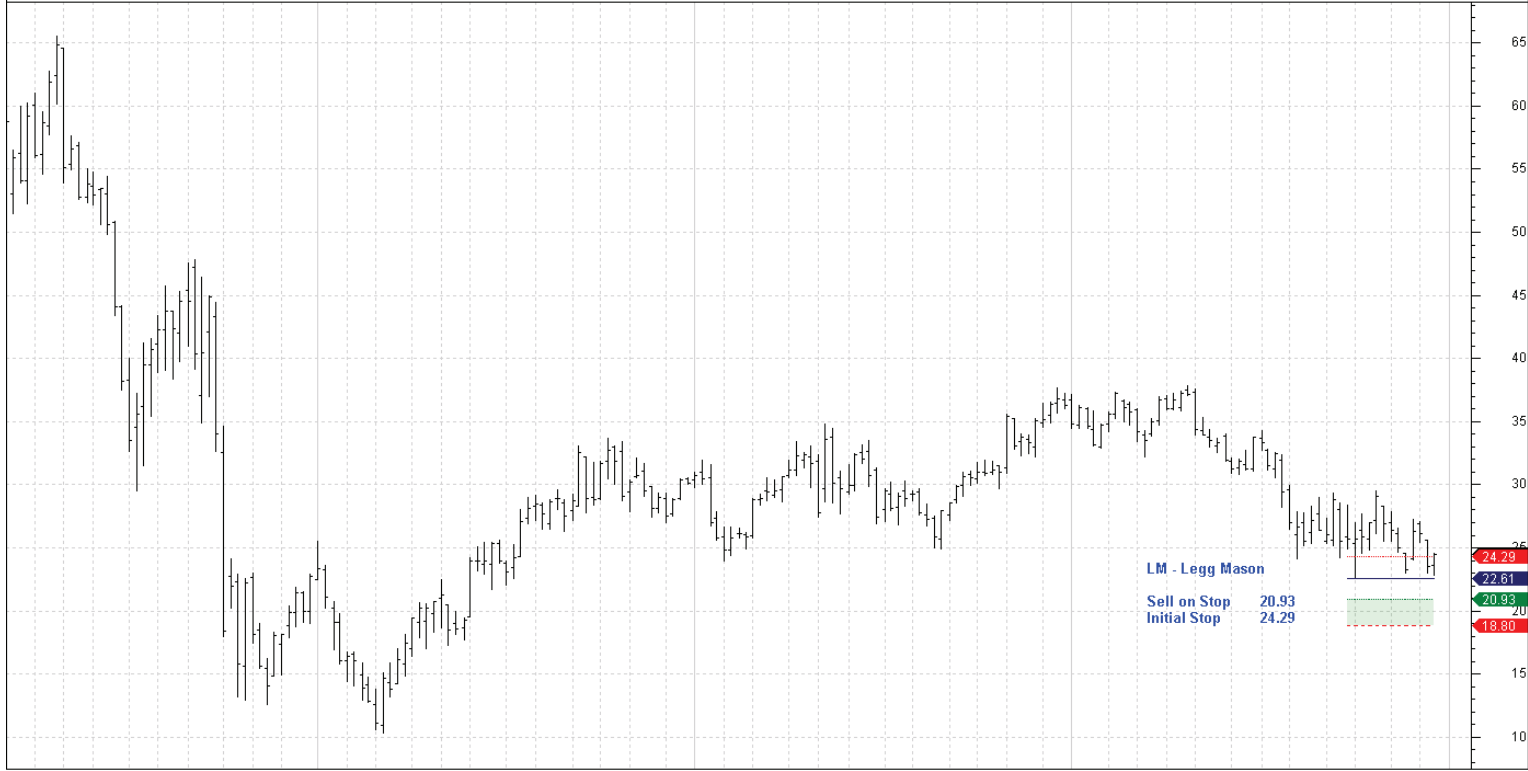


Mar Apr Ma Jun Jul Aug Sep Oct No Dec Jan Fe Mar Apr Ma Jun Jul Aug Se Oct Nov De Jan Fe Mar Apr May Jun Jul Aug Se Oct No Dec Jan 2008 2009 2010 2011 2012

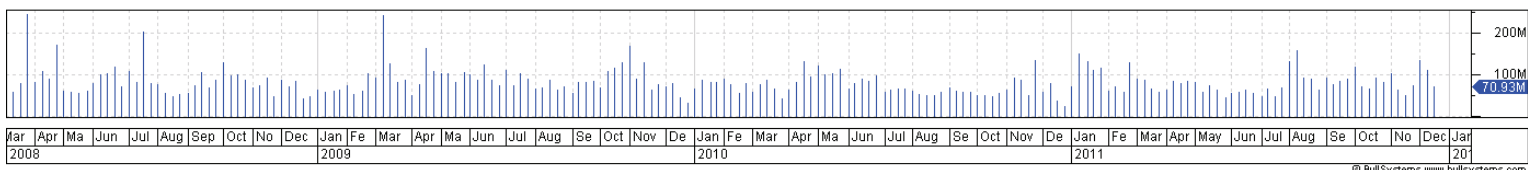
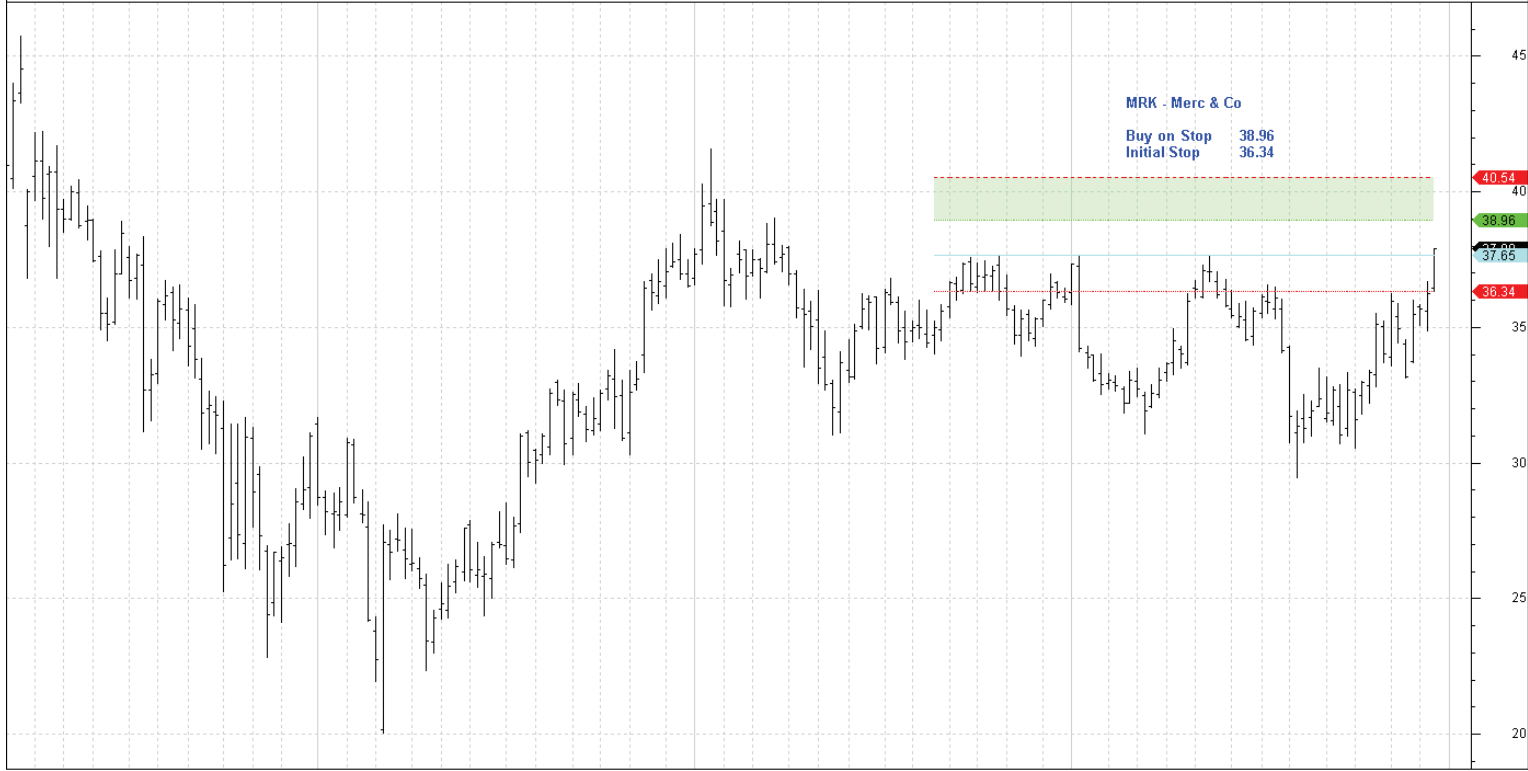
© BullSystems www.bullsystems.com



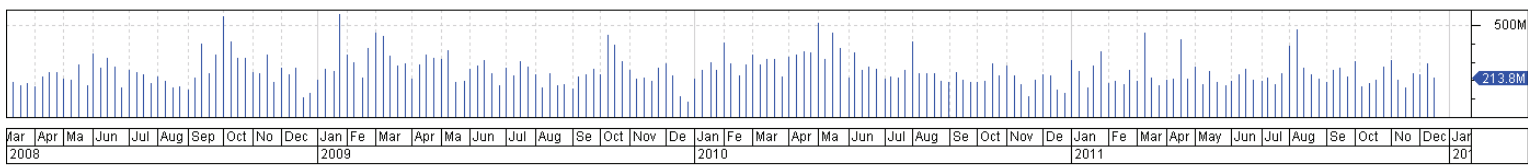
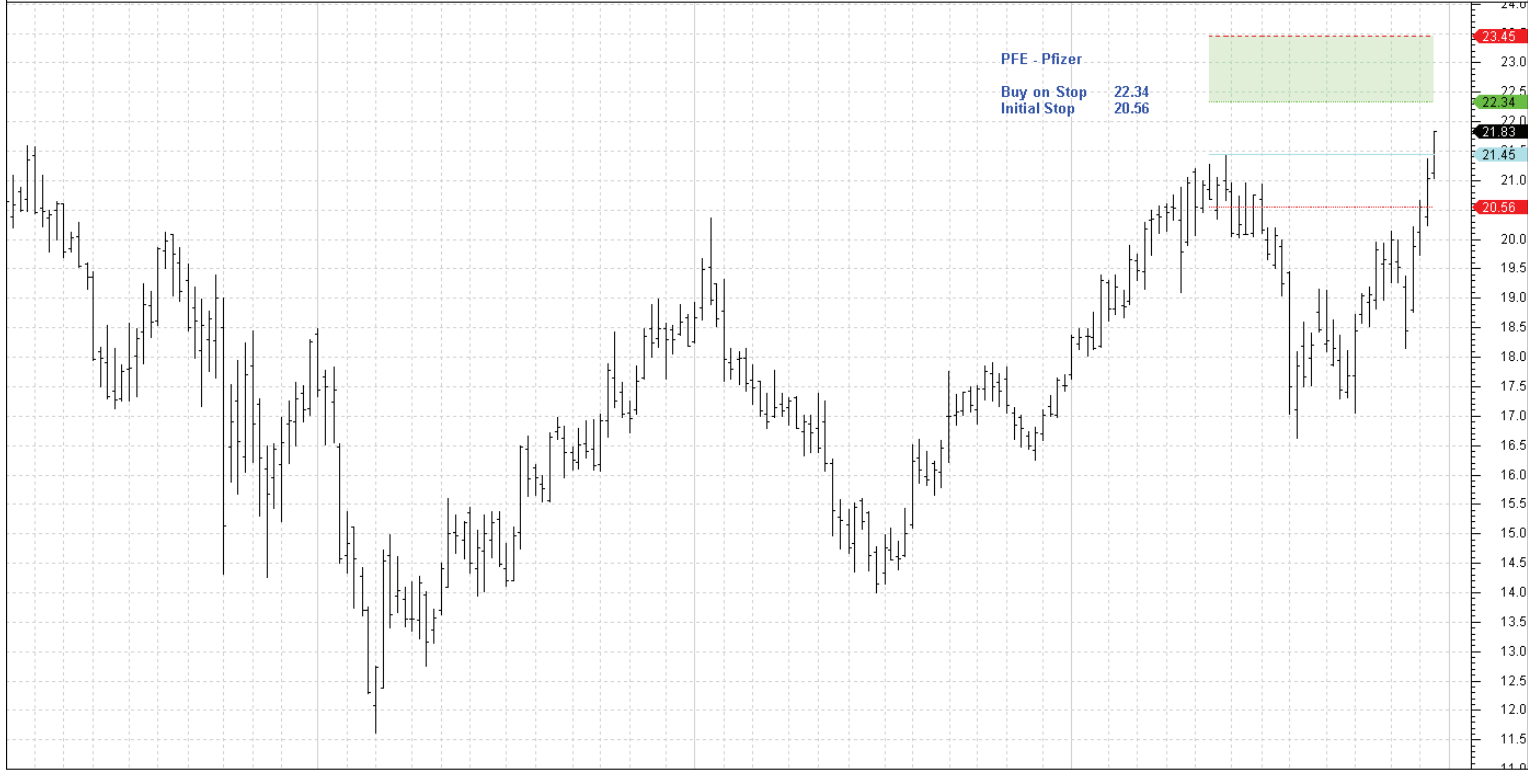
LM Weekly CI=24.45000 O=23.61000 H=24.57000 L=22.84000 +0.94000 +4.00% LM Weekly LW-MCS (19-09-2011,22.61,5,C,C) Ma=18.80200 Mi=20.93400 S=22.61000 I=24.28600 23-12-2011



MRK Weekly CI=37.90000 O=36.43000 H=37.90000 L=36.34000 +1.65000 +4.55% MRK Weekly LW-MCL (16-08-2010,37.65,5,C,C) Ma=40.53800 Mi=38.95600 R=37.65000 I=36.34400 23-12-2011



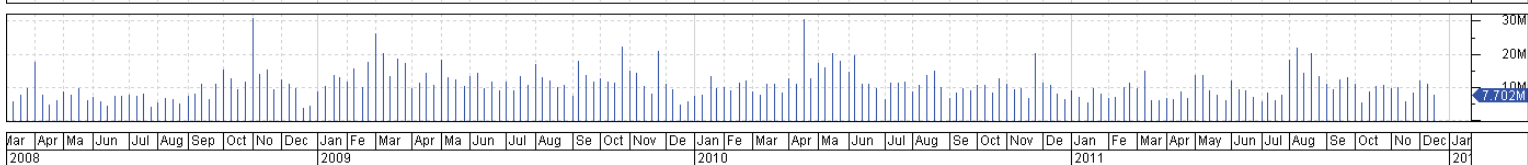
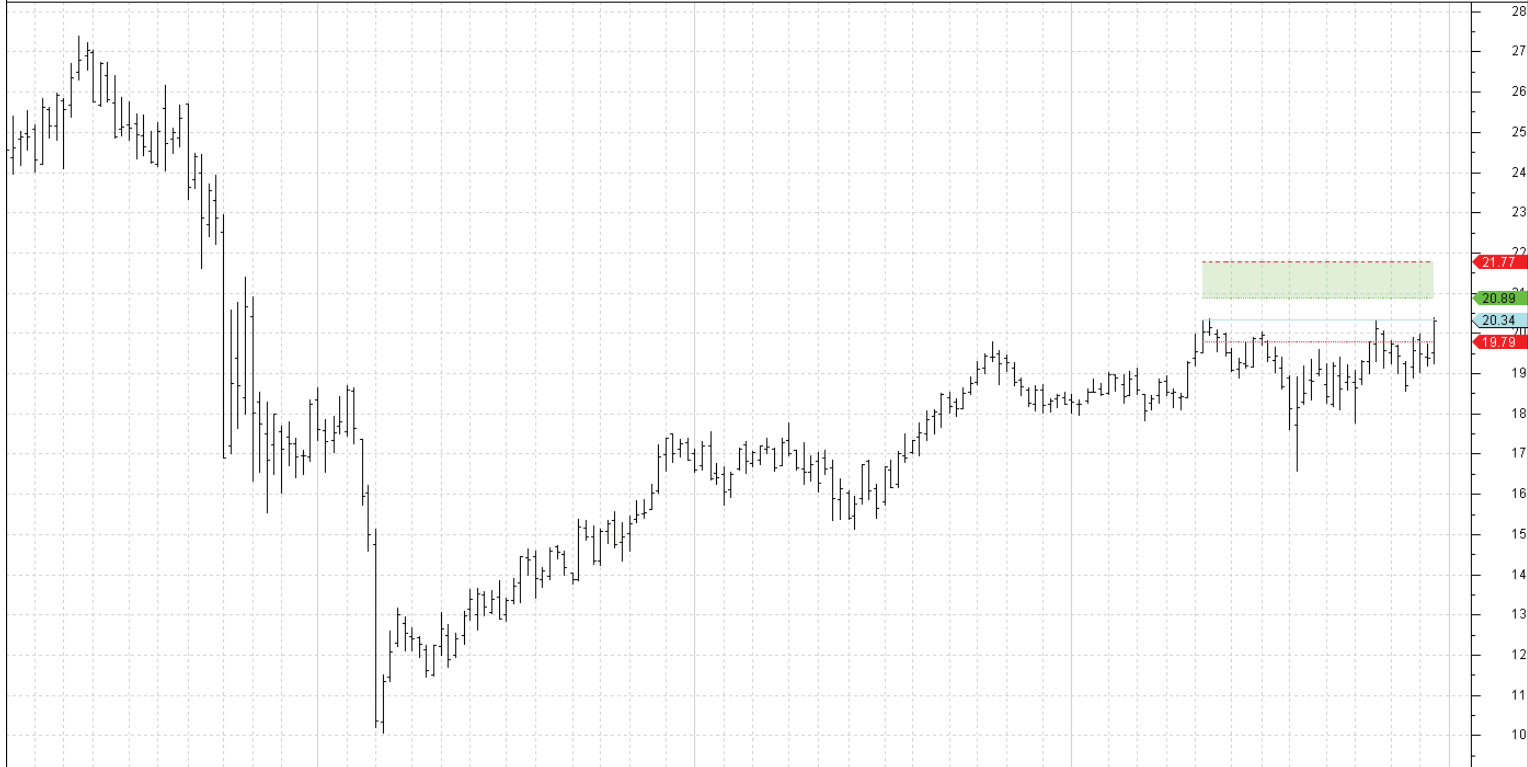
PFE Weekly CI=21.83000 O=21.13000 H=21.83000 L=21.04000 +0.80000 +3.80% PFE Weekly LW-MCL (09-05-2011,21.45,5,C,C) Ma=23.45000 Mi=22.34200 R=21.45000 I=20.55800 23-12-2011



Mar Apr Ma Jun Jul Aug Sep Oct No Dec Jan Fe Mar Apr Ma Jun Jul Aug Se Oct Nov De Jan Fe Mar Apr Ma Jun Jul Aug Se Oct Nov De Jan Fe Mar Apr Ma Jun Jul Aug Se Oct Nov De Jan Fe Mar Apr Ma Jun Jul Aug Se Oct No Dec Jan 2008 2009 2010 2011 2012

© BullSystems www.bullsystems.com

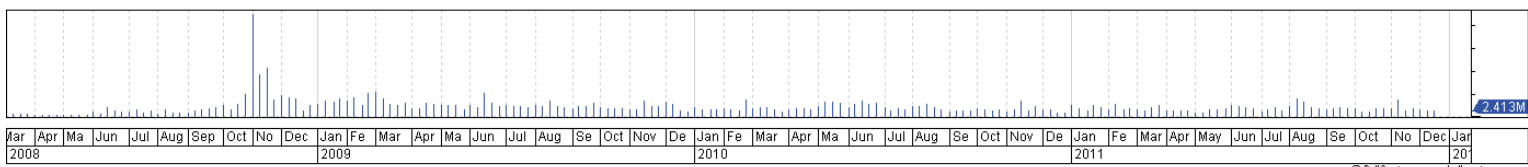
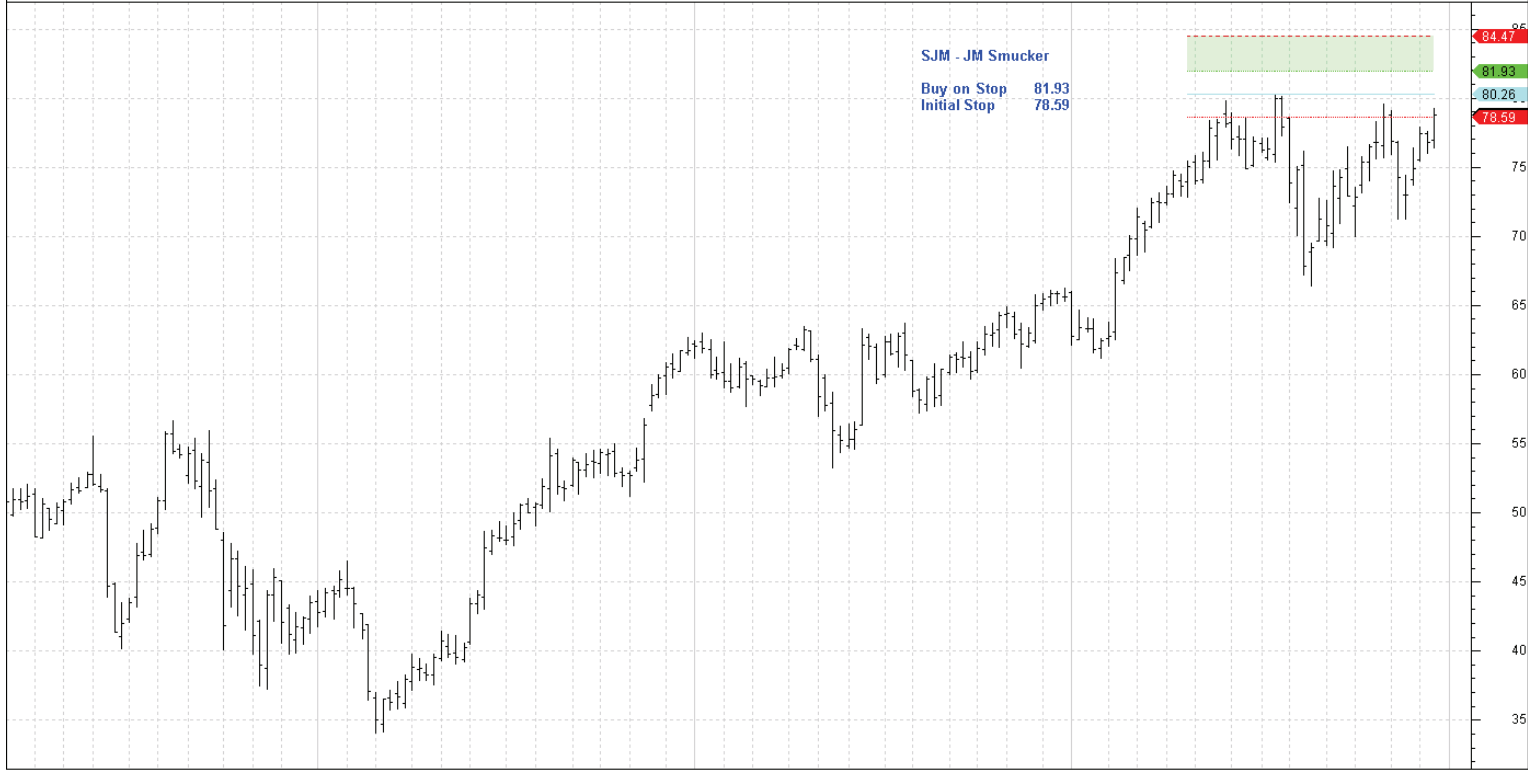
POM Weekly CI=20.30000 O=19.51000 H=20.40000 L=19.26000 +0.93000 +4.80% POM Weekly LW-MCL (02-05-2011,20.34,5,C,C) Ma=21.76900 Mi=20.88600 R=20.34000 I=19.79400 23-12-2011



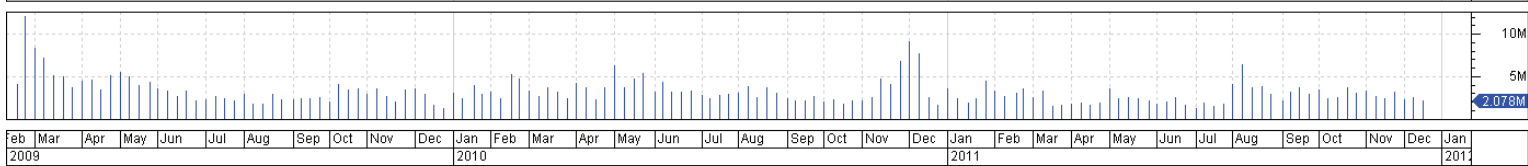
Mar Apr Ma Jun Jul Aug Sep Oct No Dec Jan Fe Mar Apr Ma Jun Jul Aug Se Oct Nov De Jan Fe Mar Apr Ma Jun Jul Aug Se Oct Nov De Jan Fe Mar Apr Ma Jun Jul Aug Se Oct No Dec Jan 2008 2009 2010 2011 2012

© BullSystems www.bullsystems.com

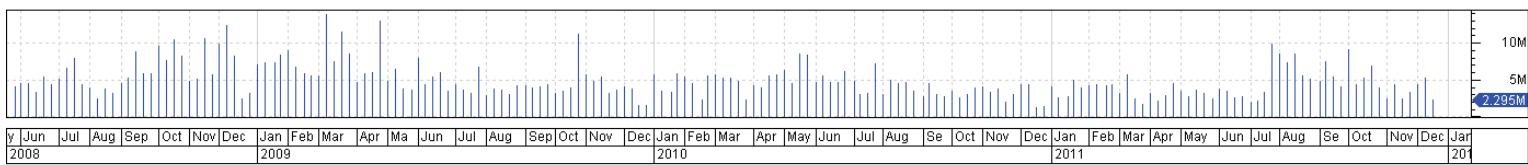
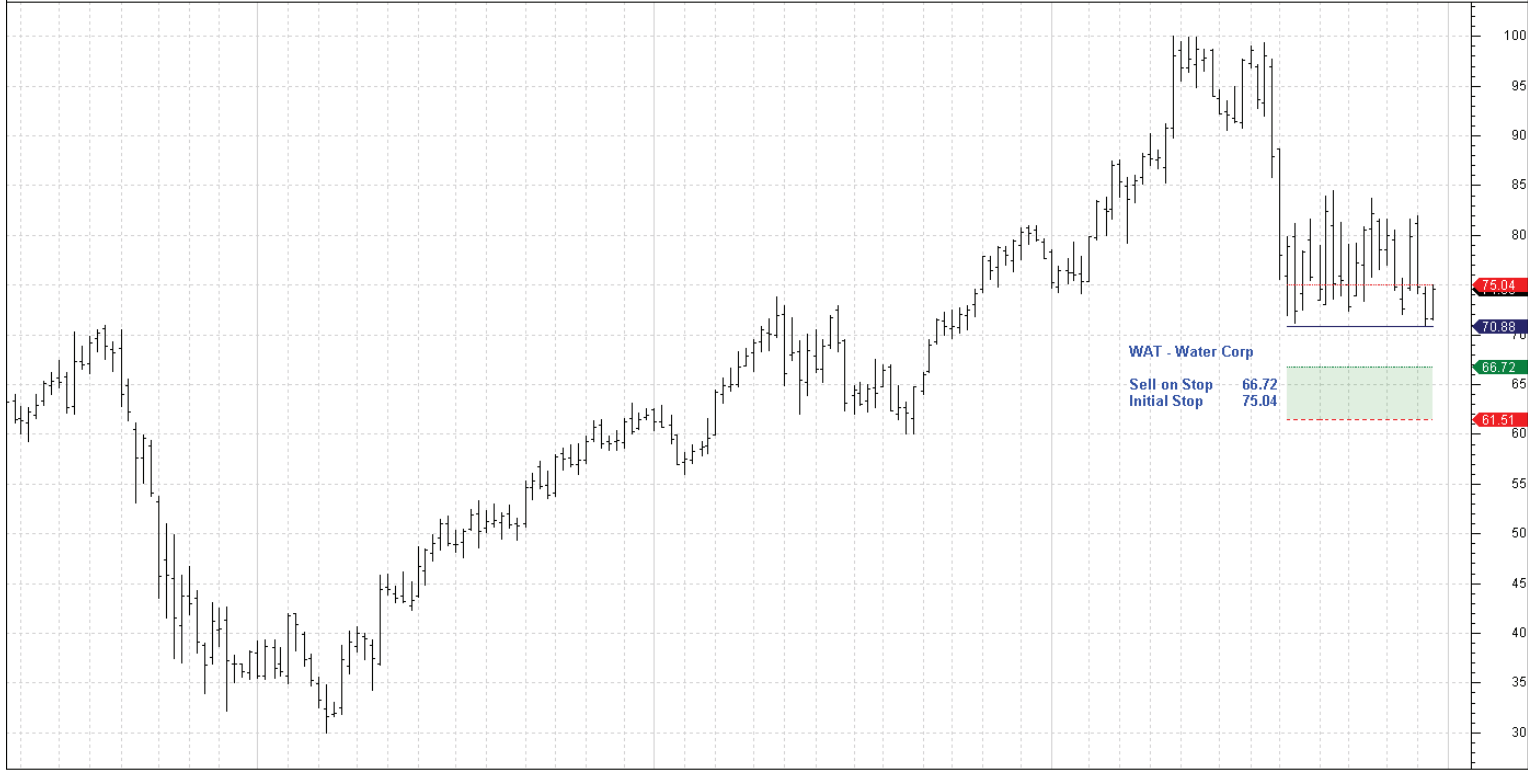
SJM Weekly CI=78.80000 O=76.99000 H=79.24000 L=76.44000 +2.04000 +2.66% SJM Weekly LW-MCL(18-04-2011,80.2552,5,C,C) Ma=84.46520 Mi=81.92520 R=80.25520 I=78.58520 23-12-2011



TEG Weekly CI=53.83000 O=51.91000 H=53.89000 L=51.22000 +2.13000 +4.12% TEG Weekly LW-MCL(20-09-2010,54.04,5,C,C) Ma=57.85600 Mi=55.47400 R=54.04000 I=52.60600 23-12-2011



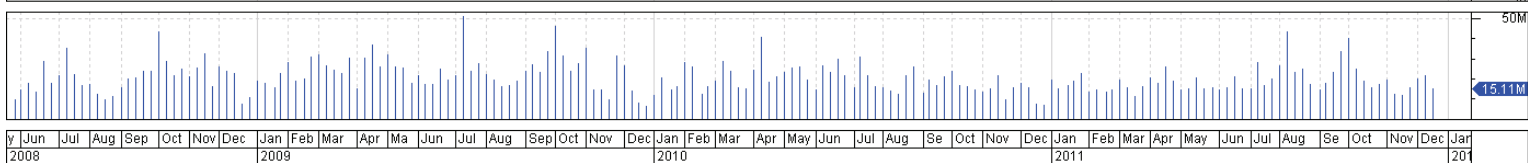
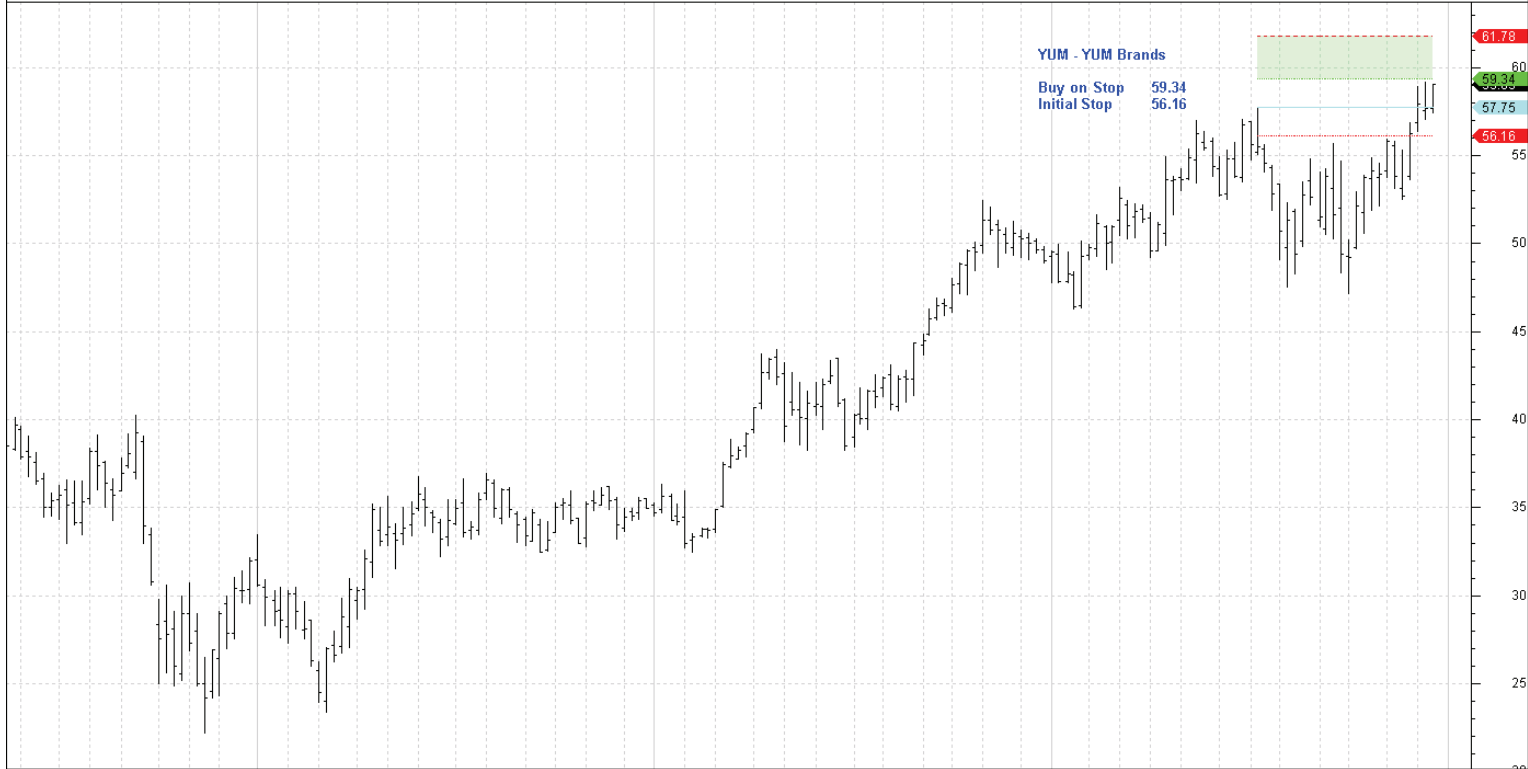
WAT Weekly CI=74.59000 O=71.65000 H=75.03000 L=71.46000 +2.98000 +4.16% WAT Weekly LW-MCS (01-08-2011,70.88,5,C,C) Ma=61.50624 Mi=66.72000 S=70.88000 I=75.04000 23-12-2011



y Jun Jul Aug Sep Oct Nov Dec Jan Feb Mar Apr Ma Jun Jul Aug Sep Oct Nov Dec Jan Feb Mar Apr May Jun Jul Aug Se Oct Nov Dec Jan Feb Mar Apr May Jun Jul Aug Se Oct Nov Dec Jan 2008 2009 2010 2011 201

© BullSystems www.bullsystems.com

YUM Weekly CI=59.03000 O=57.72000 H=59.03000 L=57.45000 +1.33000 +2.31% YUM Weekly LW-MCL (04-07-2011,57.75,5,C,C) Ma=61.78200 Mi=59.34000 R=57.75000 I=56.16000 23-12-2011



y Jun Jul Aug Sep Oct Nov Dec Jan Feb Mar Apr Ma Jun Jul Aug Sep Oct Nov Dec Jan Feb Mar Apr May Jun Jul Aug Se Oct Nov Dec Jan Feb Mar Apr May Jun Jul Aug Se Oct Nov Dec Jan 2008 2009 2010 2011 201

© BullSystems www.bullsystems.com