

# DAILY FOREX

## Wednesday 3rd February 2016

**Currencies – AUD, CAD, CHF, EUR, GBP, JPY, NZD, SGD, USD,**

---

There were 0 entries, 0TP1 exits, 0TP2 exits, TP3 exits and 1 Stop exits and 0 close at markets in Forex Daily.

There are 2 new orders in Forex Daily.

---

### Entries:

Exits: USDCAD Sell Stop 1.39422

### Take Profit Reached:

The colour coding we are currently using is as follows:

Amended orders or stops

Retained Orders or stops – no change

New working orders

Immediate action required

Short Sell

Change Contract Specifications

## OPEN POSITIONS:

PAIR:	OLD	ACTION	NEW	TP 1	TP 2	TP 3
-------	-----	--------	-----	------	------	------

### Close Positions

### Amended

Stop Positions

Limit Positions

### Retained

Stop Positions

AUDSGD	Buy Stop	0.9964	Retain	0.9964	1.0277	
EURCAD	Sell Stop	1.5498	Retain	1.5498	1.5080	
EURGBP	Sell Stop	0.7665	Retain	0.7665	0.7437	
EURJPY	Buy Stop	130.2994	Retain	130.2994	132.82	
GBPCHF	Buy Stop	1.4478	Retain	1.4478	1.4837	
XAUUSD	Buy Stop	1117	Retain	1117	1148	

Limit Positions

## WORKING ORDERS:

### CANCELLED ORDERS:

AUDJPY Buy Stop 86.25, AUDUSD Sell Stop 0.6994, EURGBP Buy Stop 0.7650, EURUSD Buy Stop 1.0988, NZDUSD Buy Stop 0.6561,

With multiple take profit orders - Close half the position at the "Take Profit 1" and then move the stop to the entry value, close the balance of the position at the "Take Profit 2"

Name	Direction	Entry	Stop Loss	TP 1	TP 2	TP3	Trade Risk
------	-----------	-------	-----------	------	------	-----	------------

## Amended

### Stop Orders

### Limit Orders

## Retained

### Stop Orders

### Limit Orders

EURUSD	Sell Limit	1.1010	1.1110	1.0610			100 pips
GBPCHF	Buy Limit	1.4060	1.3960	1.4760			100 pips
GBPCHF	Sell Limit	1.4800	1.4880	1.4100			80 pips

## NEW ORDERS:

With multiple take profit orders - Place an on Stop Order for half the position with the entry & Stop Loss and Take Profit at the "Take Profit 1". Place a 2nd order for half the position as before but Take Profit at the "Take Profit 2" target. Once the 1st target has been reached move the stop to the entry value.

Name	Order Type	Entry	S.L.	TP 1	TP 2	TP 3	Trade Risk
------	------------	-------	------	------	------	------	------------

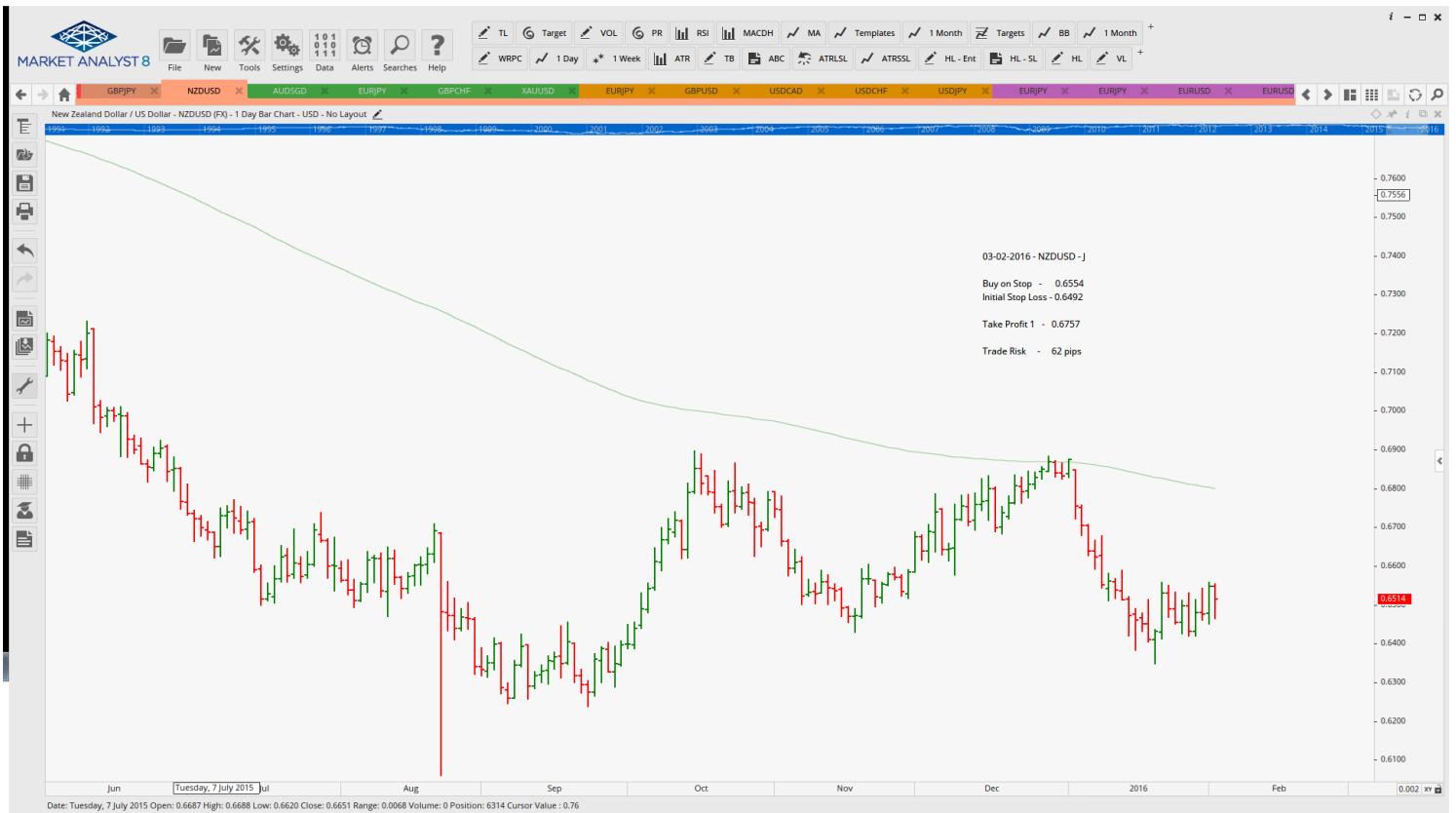
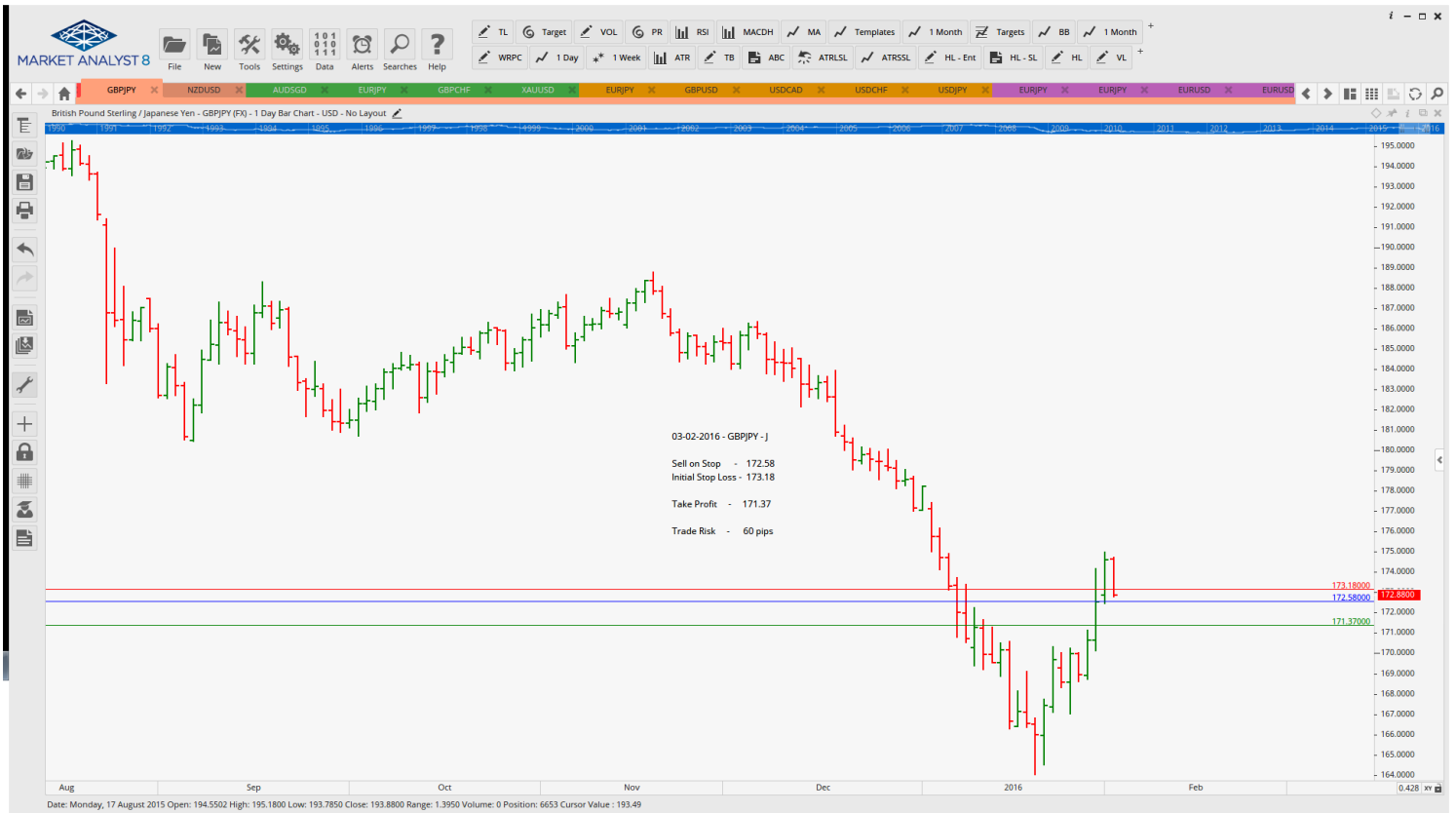
### Stop Orders

GBPJPY	Sell Stop	172.58	173.18	171.37			60 pips
NZDUSD	Buy Stop	0.6554	0.6492	0.6757			62 pips

### Limit Orders

# CHARTS:

## Stop Orders



# Limit Orders

