

7th February 2013

There was 1 exit yesterday

Futures

Currency – Euro & USD\$

Entries:

Exits: Soybean Oil

The colour coding we are currently using is as follows:

Amended orders or stops

Retained Orders or stops – no change

New working orders

Immediate action required

Short Sell

Change Contract Specifications

Open Positions

Stops:	Old	Action	New	Expiry
--------	-----	--------	-----	--------

Rollovers

Amended

RBOB Gasoline	RB2	292.4	Amend	295.9	28-02-13
Soy Bean Meal	SM2	422.3	Amend	423.9	14-03-13

Retained

Brent Crude Oil	BC	112.7	Retain	112.7	13-02-13
Gasoil	GO	991.5	Retain	991.5	12-02-13
Heating Oil	HO	308.9	Retain	308.9	28-02-13
Robusta Coffee	LRC	2036	Retain	2036	29-03-13

Working Orders

Cancelled Orders

Cocoa

Name	Code	Contract	Direction	Entry	Stop Loss	Expiry
------	------	----------	-----------	-------	-----------	--------

Amended

Orange Juice	OJ	OJH3 - Mar '13	Buy	125.80	122.10	08-03-13
--------------	----	----------------	-----	--------	--------	----------

Retained

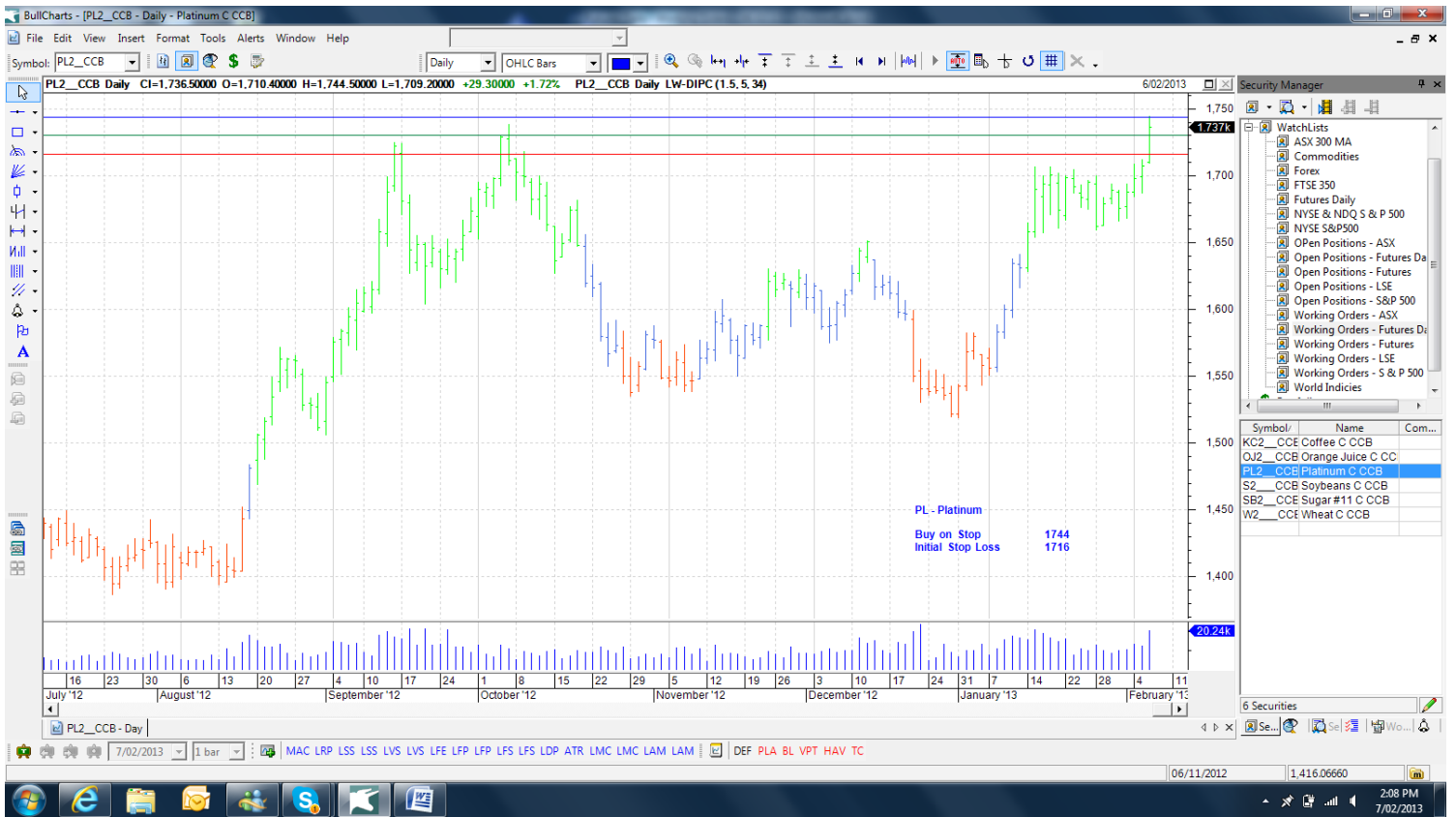
Coffee	KC	KCH3 - Mar '13	Sell	140.3	144.1	18-03-13
Wheat	W	ZWH3 - Mar - '13	Sell	731.35	748.15	14-03-13

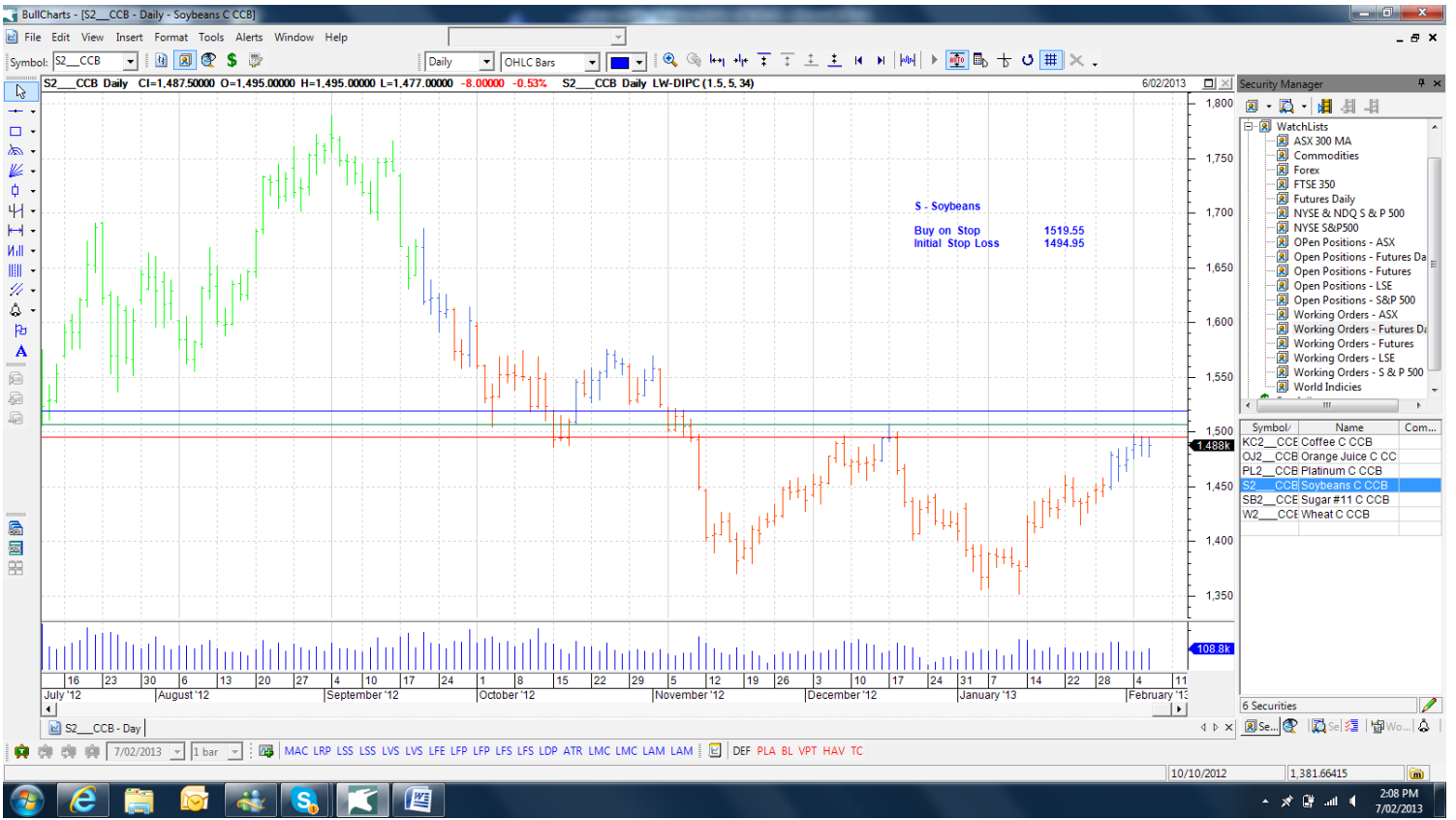
New

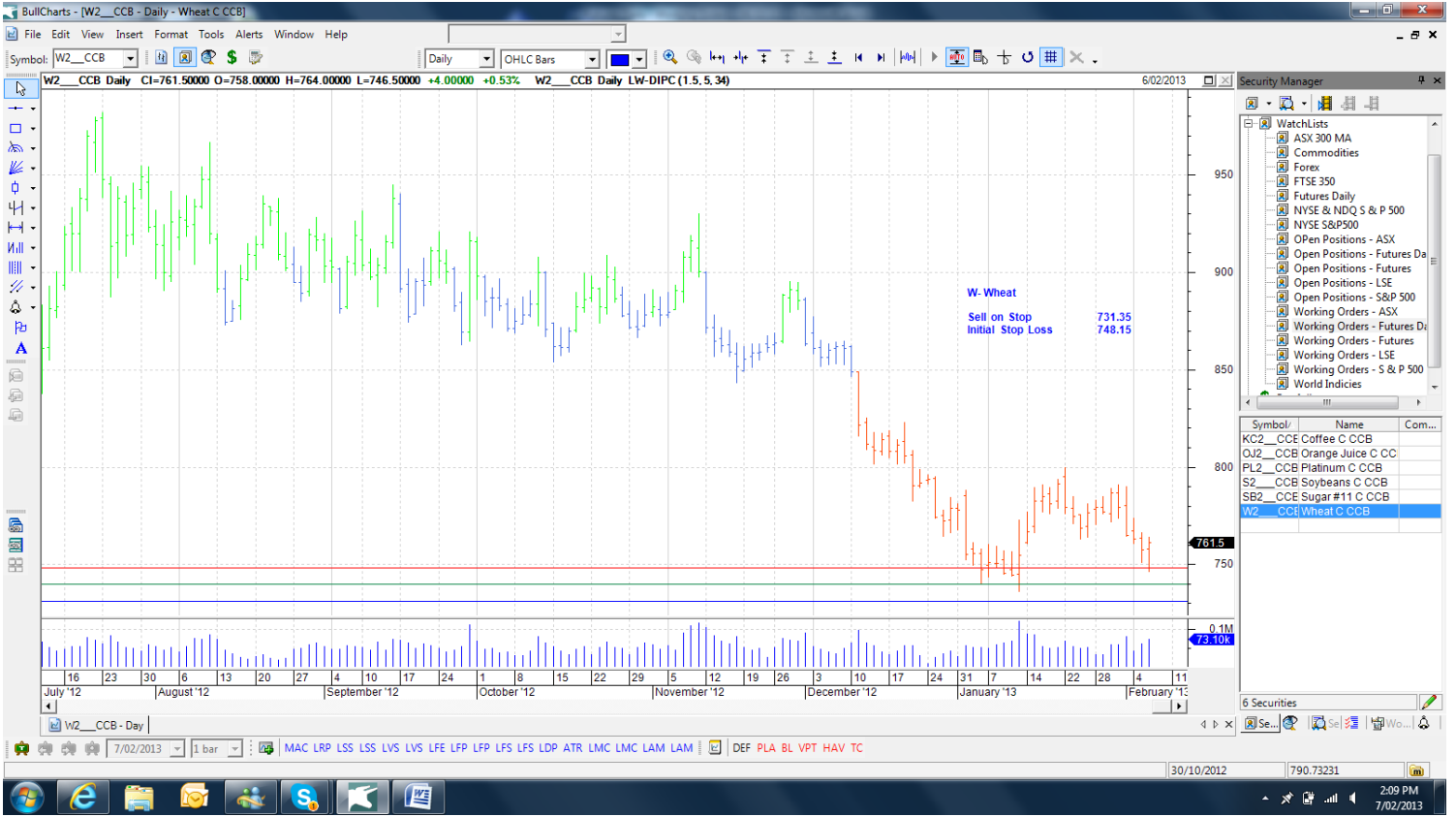
Platinum	PL	PLJ3 - June '13	Buy	1744	1716	26-04-13
Soybeans	S	ZSH3 - Mar '13	Buy	1519.55	1494.95	14-03-13
Sugar #11	SB	SBH3 - Mar '13	Buy	18.25	17.87	28-02-13

Charts









Security Manager

WatchLists

- ASX 300 MA
- Commodities
- Forex
- FTSE 350
- Futures Daily
- NYSE & NDQ S & P 500
- NYSE S&P500
- Open Positions - ASX
- Open Positions - Futures Da
- Open Positions - Futures
- Open Positions - LSE
- Open Positions - S&P 500
- Working Orders - ASX
- Working Orders - Futures Da
- Working Orders - Futures
- Working Orders - LSE
- Working Orders - S & P 500
- World Indices

Symbol	Name	Com...
KC2_CCB	Coffee C CCB	
OJ2_CCB	Orange Juice C CC	
PL2_CCB	Platinum C CCB	
S2_CCB	Soybeans C CCB	
SB2_CCB	Sugar #11 C CCB	
W2_CCB	Wheat C CCB	

6 Securities