

Retained

Ball Corporation	BLL	79.32	Retain	79.32
General Electric Co	GE	29.65	Retain	29.65
VF Corporation	VFC	54.25	Retain	54.25

WORKING ORDERS:

Name Risk	Code	Direction	Entry	Stop Loss	Trade
--------------	------	-----------	-------	-----------	-------

Cancelled

Amended

Retained

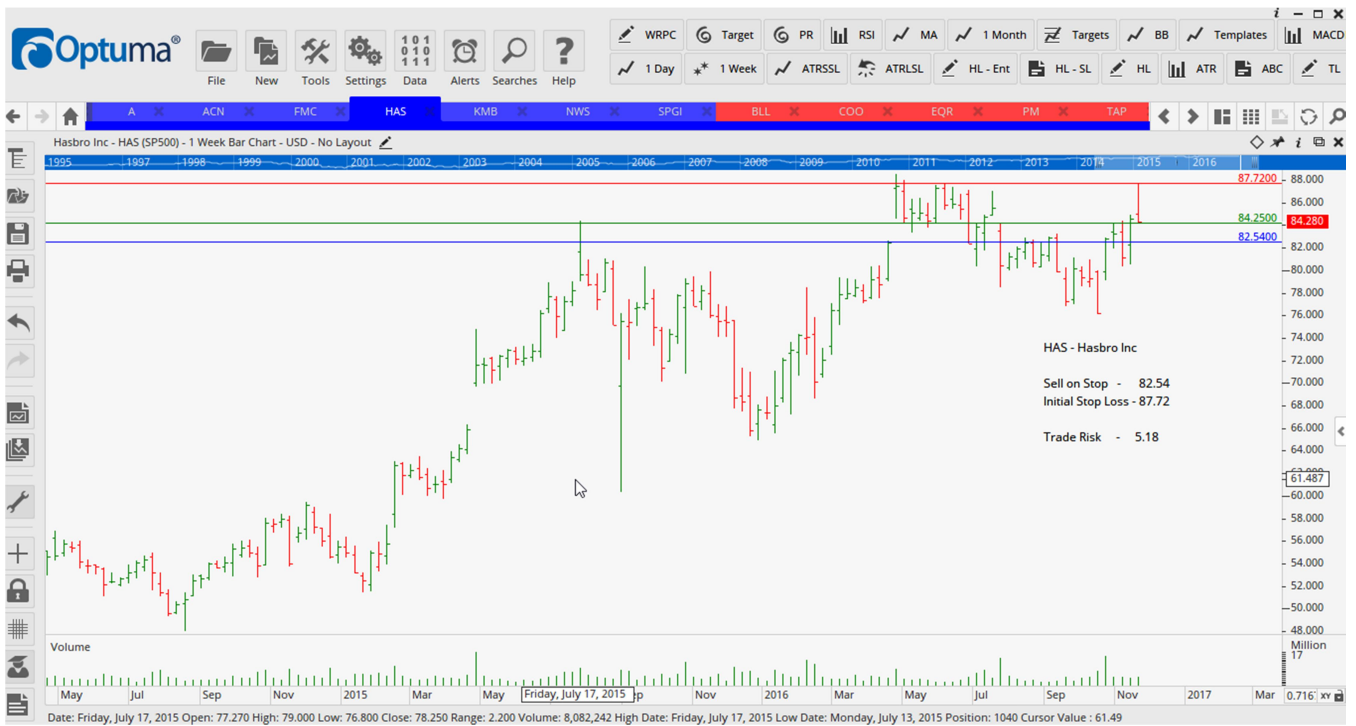
Accenture Plc	ACN	Sell	113.95	120.15	4.05
CBRE Group Inc	CBG	Buy	28.71	26.52	2.19
Delta Airlines	DAL	Sell	37.37	40.97	3.60
FMC Corp	FMC	Sell	50.80	55.30	4.50
Lowes Companies	LOW	Buy	72.52	68.89	3.63
Newscorp	NWS	Buy	13.01	11.53	1.49
Robert Half Intl	RHI	Buy	39.90	37.47	2.43
Wyndham worldwide Corp	WYN	Buy	69.84	66.03	3.81

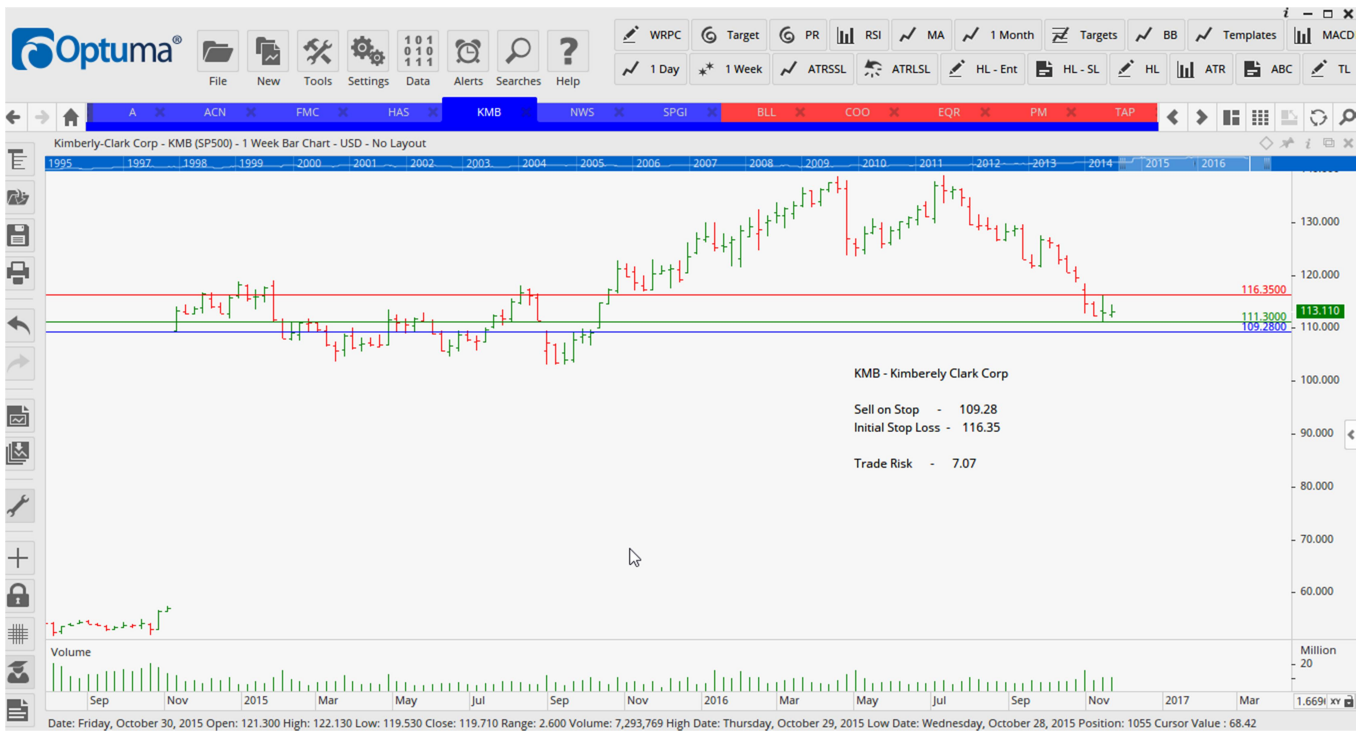
NEW ORDERS:

Agilent Technologies Inc	A	Sell	43.95	47.08	3.13
Hasbro Inc	HAS	Sell	82.54	87.72	5.18
Kimberly Clark Corp	KMB	Sell	109.28	116.35	7.07
S&P Global Inc	SPGI	Sell	118.68	126.27	7.59

CHARTS









File New Tools Settings Data Alerts Searches Help

WRPC Target PR RSI MA 1 Month Targets BB Templates MACD
1 Day 1 Week ATRSSL ATRLSL HL - Ent HL - SL HL ATR ABC TL

A ACN FMC HAS KMB NWS SPGI BLL COO EOR PM TAP

S&P Global Inc - SPGI (SP500) - 1 Week Bar Chart - USD - No Layout



Date: Friday, February 12, 2016 Open: 84.600 High: 86.460 Low: 81.950 Close: 85.520 Range: 4.510 Volume: 10,022,587 High Date: Wednesday, February 10, 2016 Low Date: Thursday, February 11, 2016 Position: 1070 Cursor Value: 107.81